

This Owner's Manual is provided and hosted by [Appliance Factory Parts](#).



Vision Grill P-6K6J1 Owner's Manual

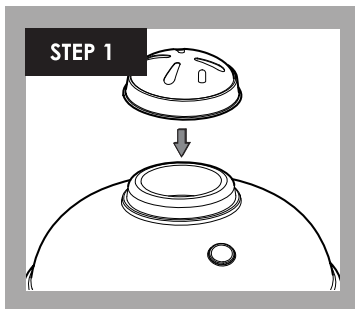
[Shop genuine replacement parts for Vision Grill
P-6K6J1](#)



[Find Your Vision Grill Grill Parts - Select From 25 Models](#)

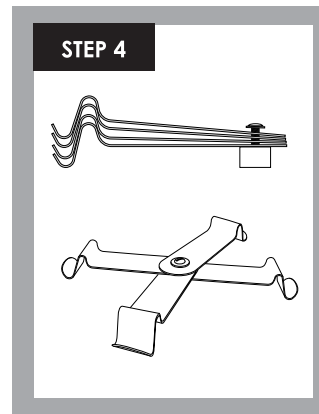
----- Manual continues below -----

SET-UP KAMADO CLASSIC P.



Step 1: Grill Assembly

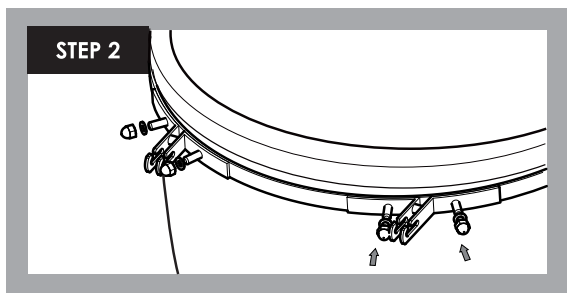
Close lid and press top vent onto top of kamado so spring clips are fully engaged, with calibrations facing the front of the grill. Take all parts out of the grill before lifting.



Step 4: Base Assembly

The P-Series base comes packaged in a condensed shape to minimize space during transit.

First loosen the bolt to allow the four legs to be adjusted with equal spacing between each leg. Check that the legs are fully extended from the bolt (if legs, are not fully extended, the grill will not properly nest on the base). Tighten the bolt to securely lock the base into this position. Then slowly lower the grill onto the locked base.

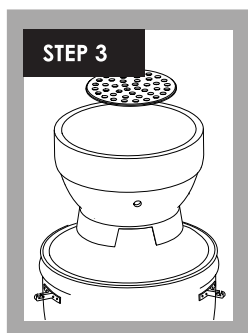
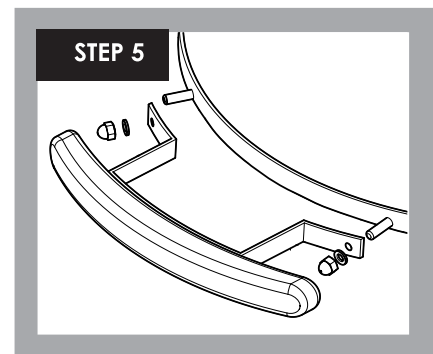


Step 2: Shelf Bracket

Mount shelf brackets over studs on the sides of the metal bands on the bottom ceramic grill body with bracket slots facing up. Brackets are stamped on the back with letters indicating their position (e.g., LF=Left Front bracket and RB=Right Back bracket). Mount flat washer then acorn nut on each stud and tighten with wrench provided.

Step 5: Handle Assembly

Attach the handle by placing handle bracket over studs, opposite the hinge. On each stud use flat washer, then screw on acorn nut and tighten. Mount side shelves by inserting the shelf rod into the shelf bracket. Tilting the shelf up slightly and sliding in or out allows you to deploy or store the shelves.



Step 3: Grill Assembly

Take all parts out of the grill before lifting. Place fire bowl inside kamado. Place cast iron grate into fire bowl.

Step 6: Long-Term Maintenance

1. The Wood Side Shelves should be covered when not in use and may require refinishing from time to time.
2. Routinely check the Spring Assist Band to make sure the 2 5/8" bolts are tight and secure.