

This Owner's Manual is provided and hosted by [Appliance Factory Parts](#).



Broil King 9977-82IR Owner's Manual

[Shop genuine replacement parts for Broil King
9977-82IR](#)



[Find Your Broil King Grill Parts - Select From 1349 Models](#)

----- Manual continues below part list -----

Available Replacement Parts for Broil King 9977-82IR

| | |
|-----------------------------|--|
| 18013 | LARGE PROBE HEAT INDICATOR |
| 10081-BK630 | NAMEPLATE HI BROIL KING BLACK ZINC |
| S21124 | SCREW PHCP #8 X 12 + |
| Y-12220 | S/B BUSHING SB 1.375 16 HEY |
| S15263 | ROTISSERIE BUSHING |
| S15299 | WASHER COUNTERWEIGHT ROTIS |
| S15270 | ROTISSERIE COUNTERWEIGHT ASSY |
| S15271 | ROTISSERIE HANDLE + |
| 18433 | OEM FLAV R WAVE - REGAL/IMPERIAL |
| Y-12223 | MAGNET SNAP IN - DOOR |
| Y-12222 | MAGNET - DOOR |
| 23000-253 | SIDE BURNER LID IR SS |
| 22009-901 | GREASE PAN FORMED + |
| Y-11567 | M8 SHOULDER M6 TYPE D SCREW |
| 10342-E13 | ELECTRODE W/WIRE |
| 22005-991 | WARMING RACK PORC COATED 500 |
| 20809-957 | REAR BURNER TUBE ASSMBLY W/COMP. FITTING |
| S15260 | SPIT ROD ROTISSERIE 750 45 INCH |
| 10240-20 | DOOR PIN TOP |
| 27055-901 | GREASE TRAY PORC FORMED 440 + |
| 21039-911 | CASTER BRACKET BLACK |
| 20005-000 | HARDWARE BAG STICK & CHAIN SS |
| Y-99100 | DRAWER SLIDE SET LEFT & RIGHT HAND 20 IN |
| 10240-17 | HINGE PIN 750 DUAL |
| 10892-23 | CASTER RUBBER 3 INCH W/PLATE |
| 26009-917 | HANDLE END CAP CHROME + |
| 22003-991 | GRID - WARMING RACK 250 PORC |
| SP11-25 | STOP BUMPER - SILICONE |
| 21079-906 | HANDLE SEAT CABINET 430SS + |
| 10342-T21 | ELECTRODE WIRE S/B 35 INCH |

| | |
|----------------------------|---------------------------------------|
| 10892-285 | CASTER 3 INCH RUBBER W/LEG LEVEL |
| 22001-164 | BEZEL SS FLAT SML + 250/500/625/750 A |
| 22002-264 | BEZEL SS FLAT LRG + 250/500/625/750 A |
| 57039-901 | ROTISSERIE BRACKET BLK |
| S15508 | REAR BURNER ELECTRODE WIRE + |
| 50502 | HEAVY DUTY MEAT FORKS |
| 10342-45 | IGNITOR - QUINTUPLE |
| 10342-E22 | ELECTRODE W/WIRE 22 INCH |
| 21171-23 | HANDLE CABINET A |
| 21335-111 | TOP MAGNET BRACKET 500 BLACK |
| 22001-669 | CONTROL KNOB SML I CLEAR |
| 22001-769 | CONTROL KNOB LRG I CLEAR |
| 25020-84 | LED WIRE HARNESS 4 BULB |
| 25070-92 | WIRING HARNESS + |
| 25070-93 | IGNITOR BUTTON & WIRE IR SS + |
| 25070-95 | LIGHT SWITCH I/R SS W/LED RING |
| 27028-493 | CONTROL COVER I 790 SS LIGHTS |
| 12023-103 | COLLECTOR BOX ASSY 250 SS |
| Y-11990 | NUT HEX BRASS 3/8 27 RB LINE |
| 21035-991 | GREASE RAIL 440/500 SABLE BLK |
| 27905-354 | BURNER TUBE REAR 500 W/WINDSHIELD |
| 10111-15A | HOSE ASSEMBLY SS |
| 27249-904 | GREASE SHIELD MODULAR, 6.5 x 6 |
| S15517-011 | ELECTRODE ASSEMBLY |
| 22025-903 | COLLECTOR BOX ASSY 500 430SS |

Broil King®



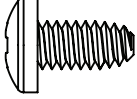


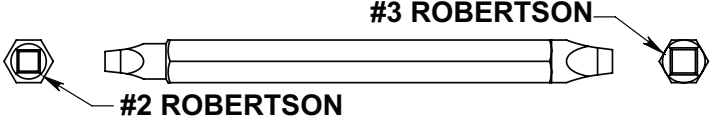
Broil King Imperial™

S 690 IR
9979-82
9979-83
9979-86

Onward
MANUFACTURING COMPANY
SINCE 1906
1000 EAST MARKET STREET
HUNTINGTON, INDIANA, 46750, USA

20084-E37EU REV C 01/21

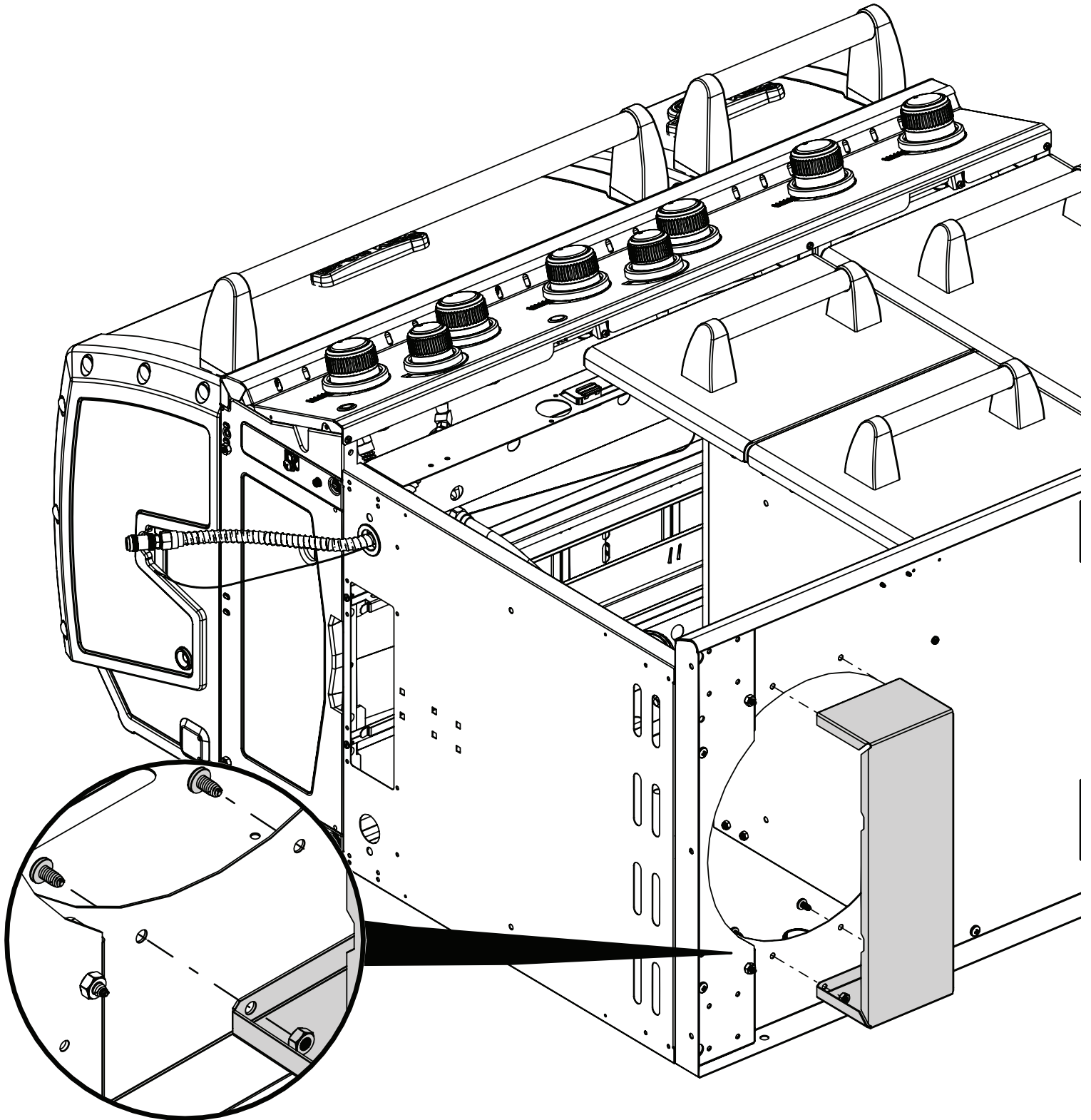
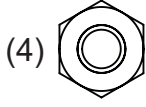
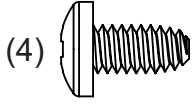
HARDWARE INCLUDED

| | | | | | |
|---------|---|------|--|---|-----|
| Y-12865 |  | (32) | Y-11793 |  | (8) |
| Y-29306 |  | (4) |  <p>#3 ROBERTSON</p> <p>#2 ROBERTSON</p> | | |

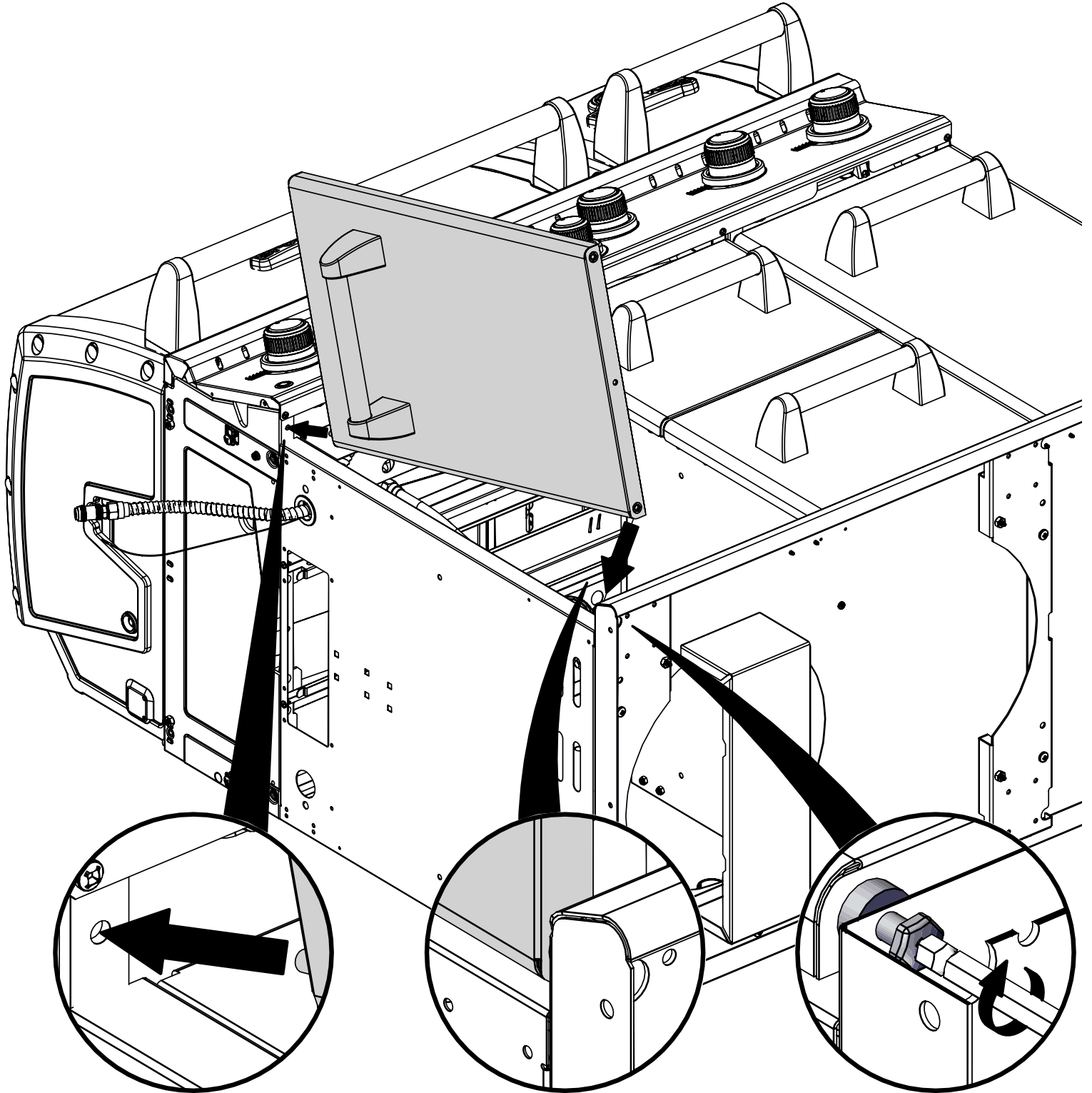
TOOLS REQUIRED



1

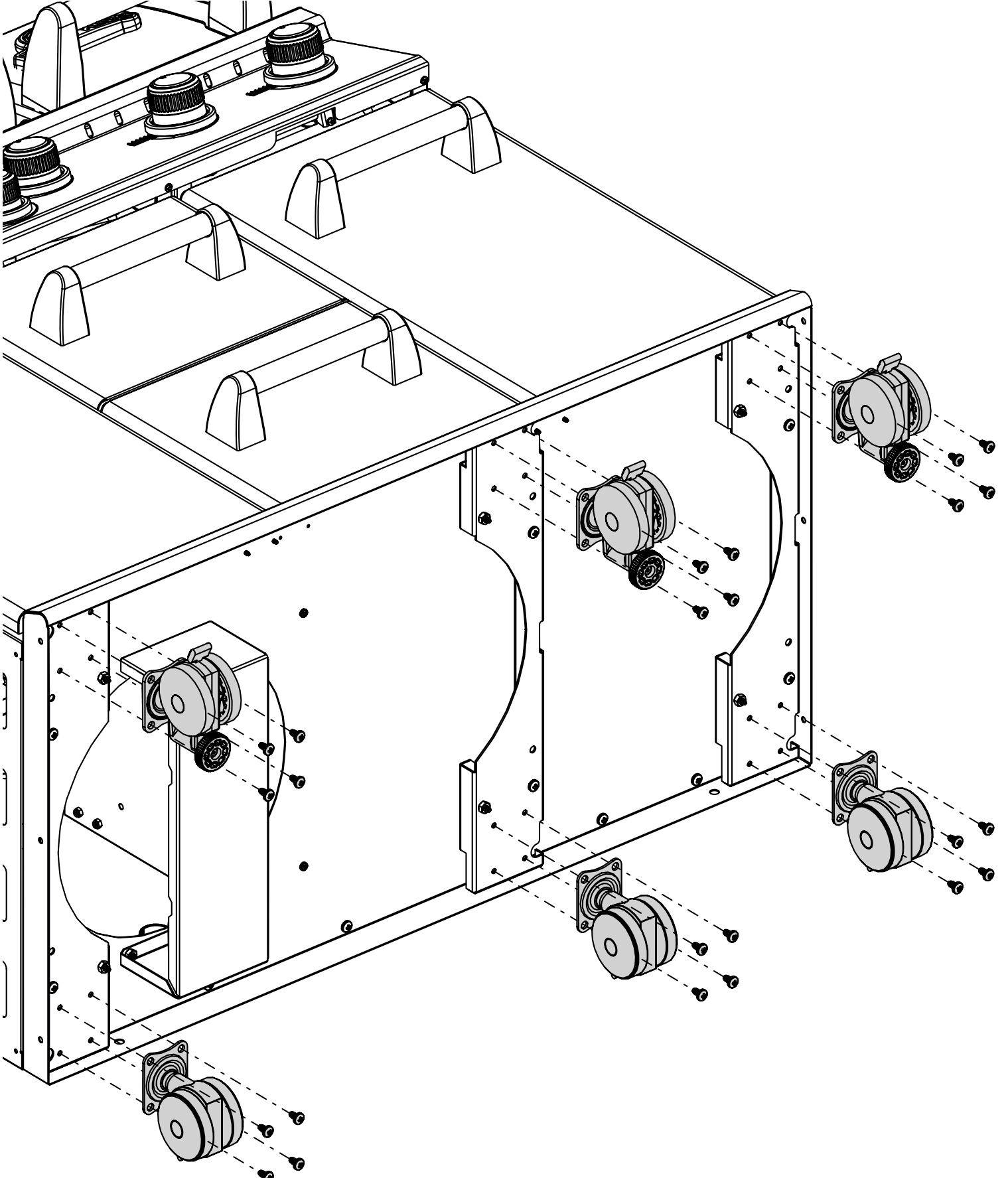
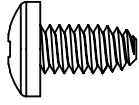


2

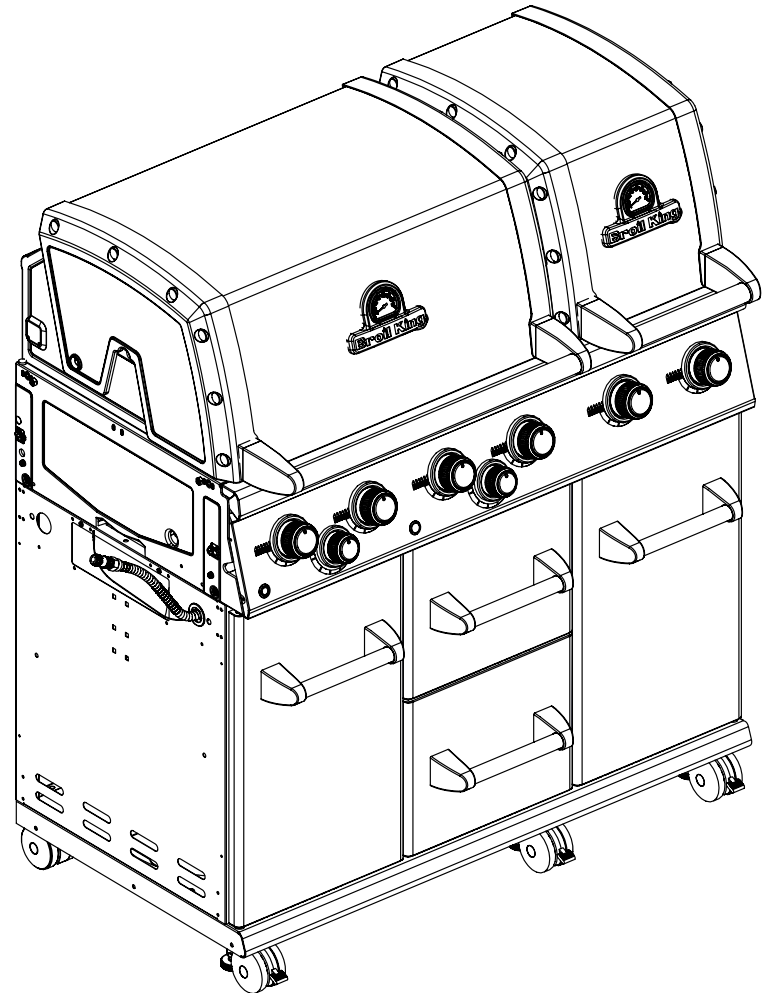
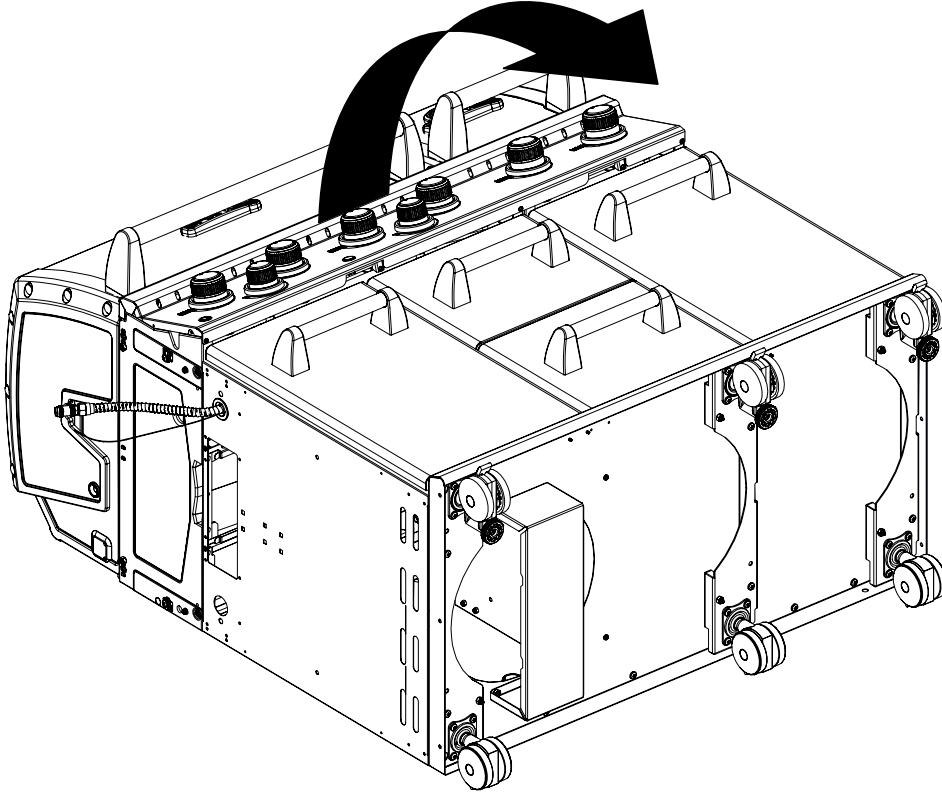


3

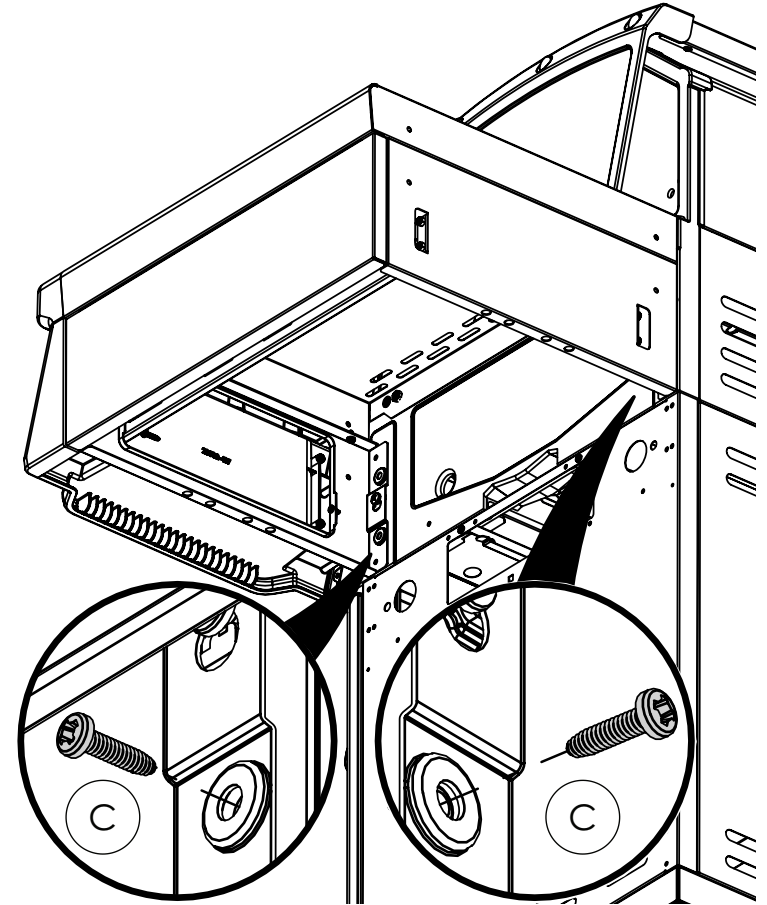
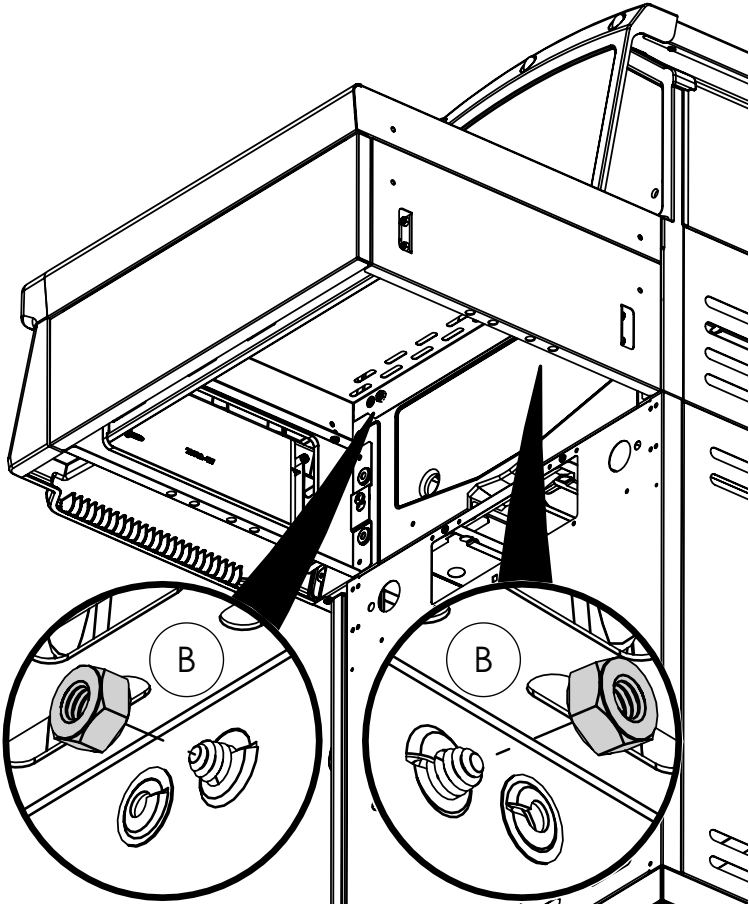
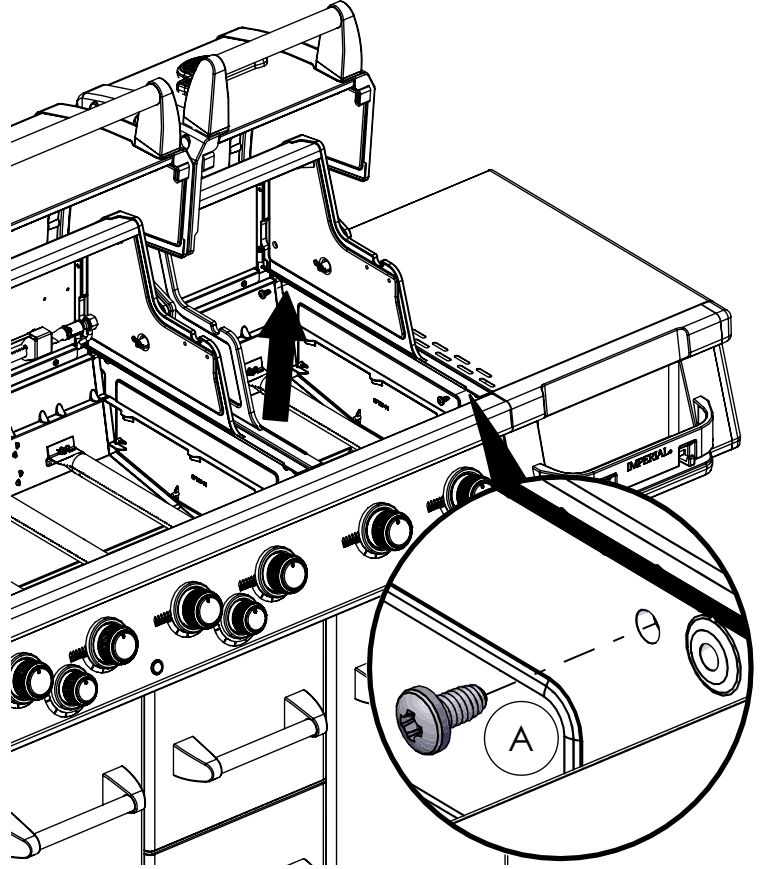
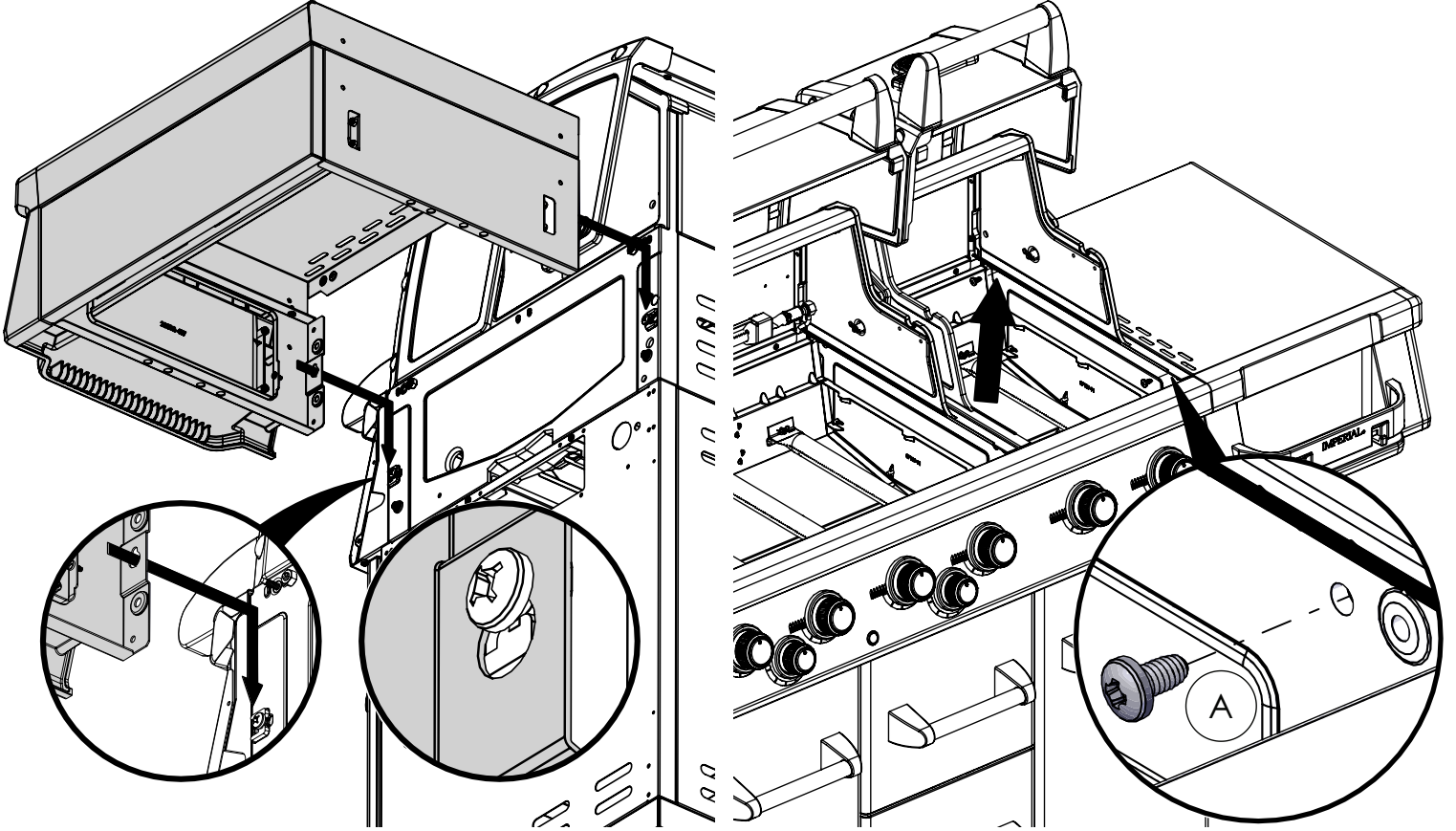
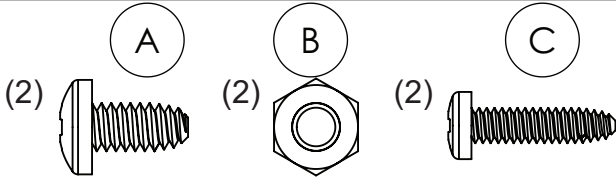
(24)



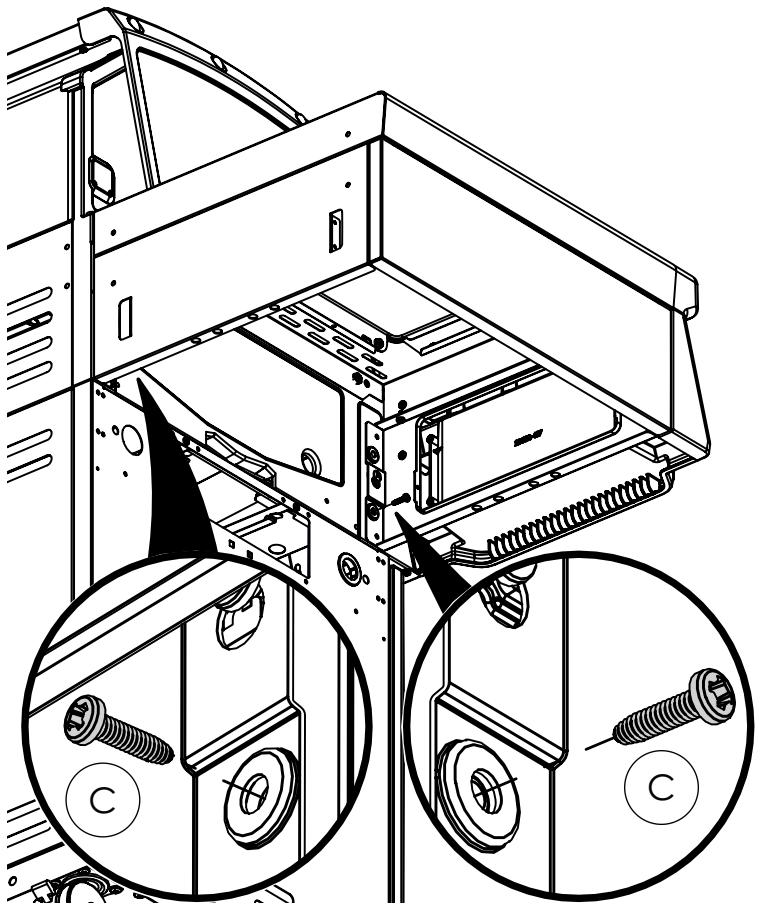
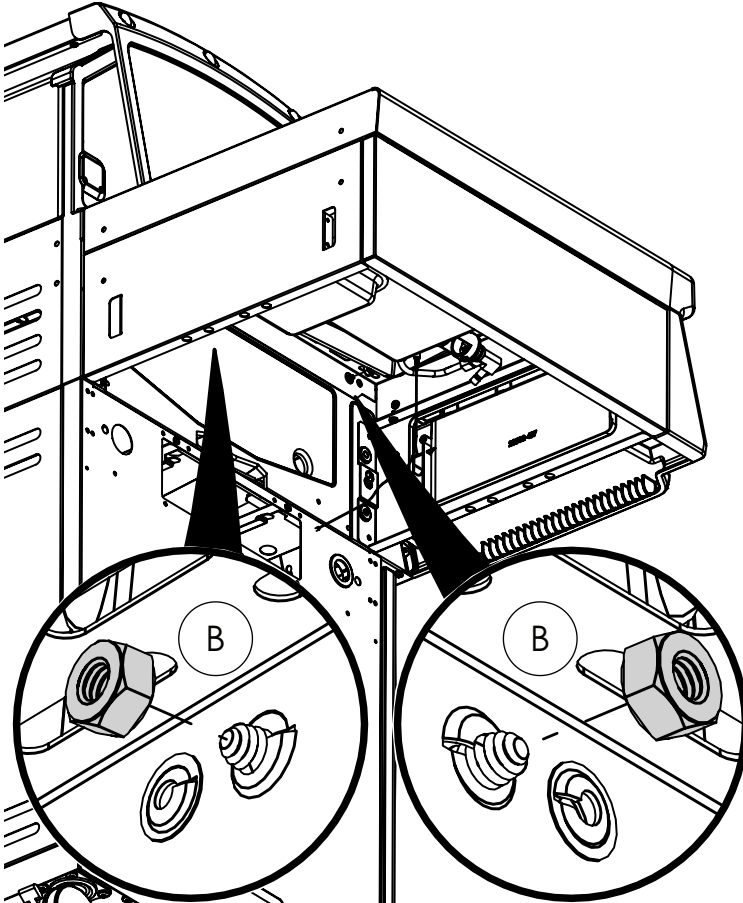
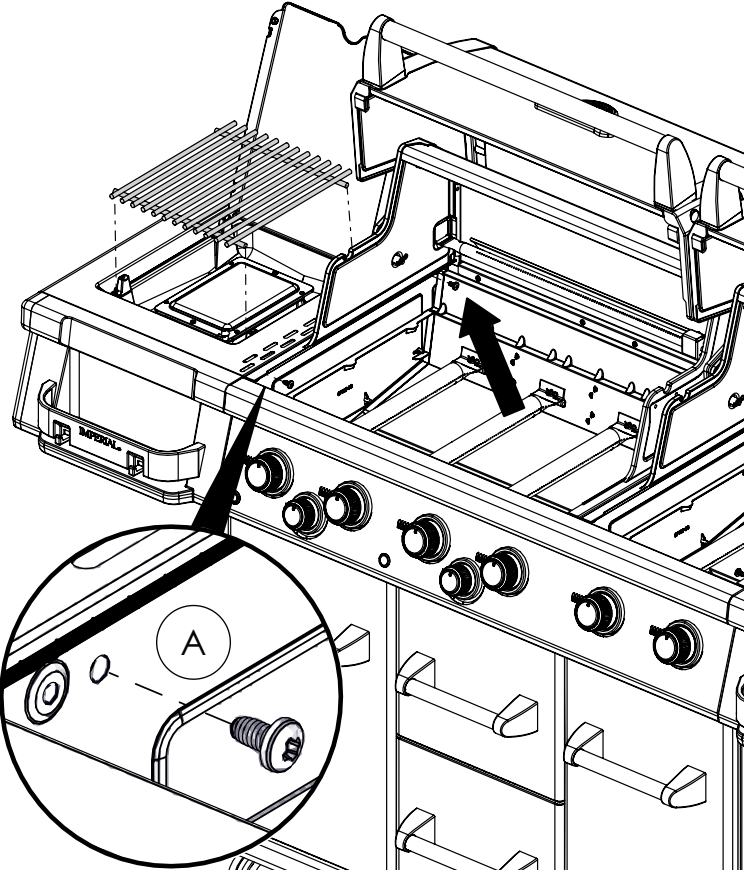
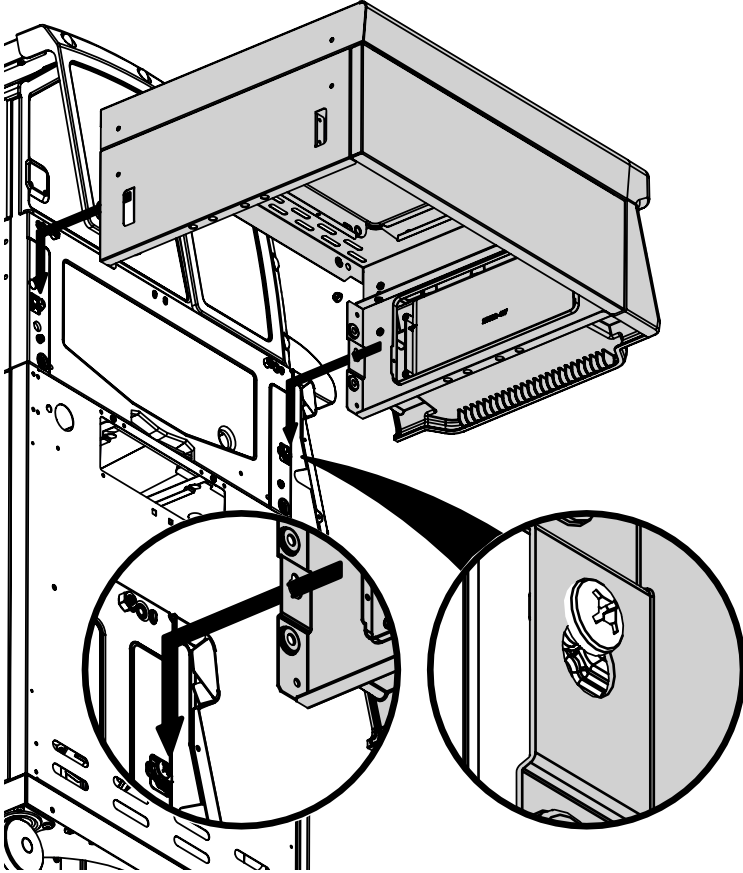
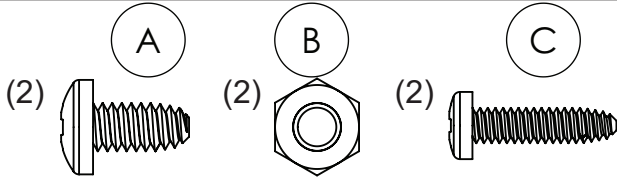
4



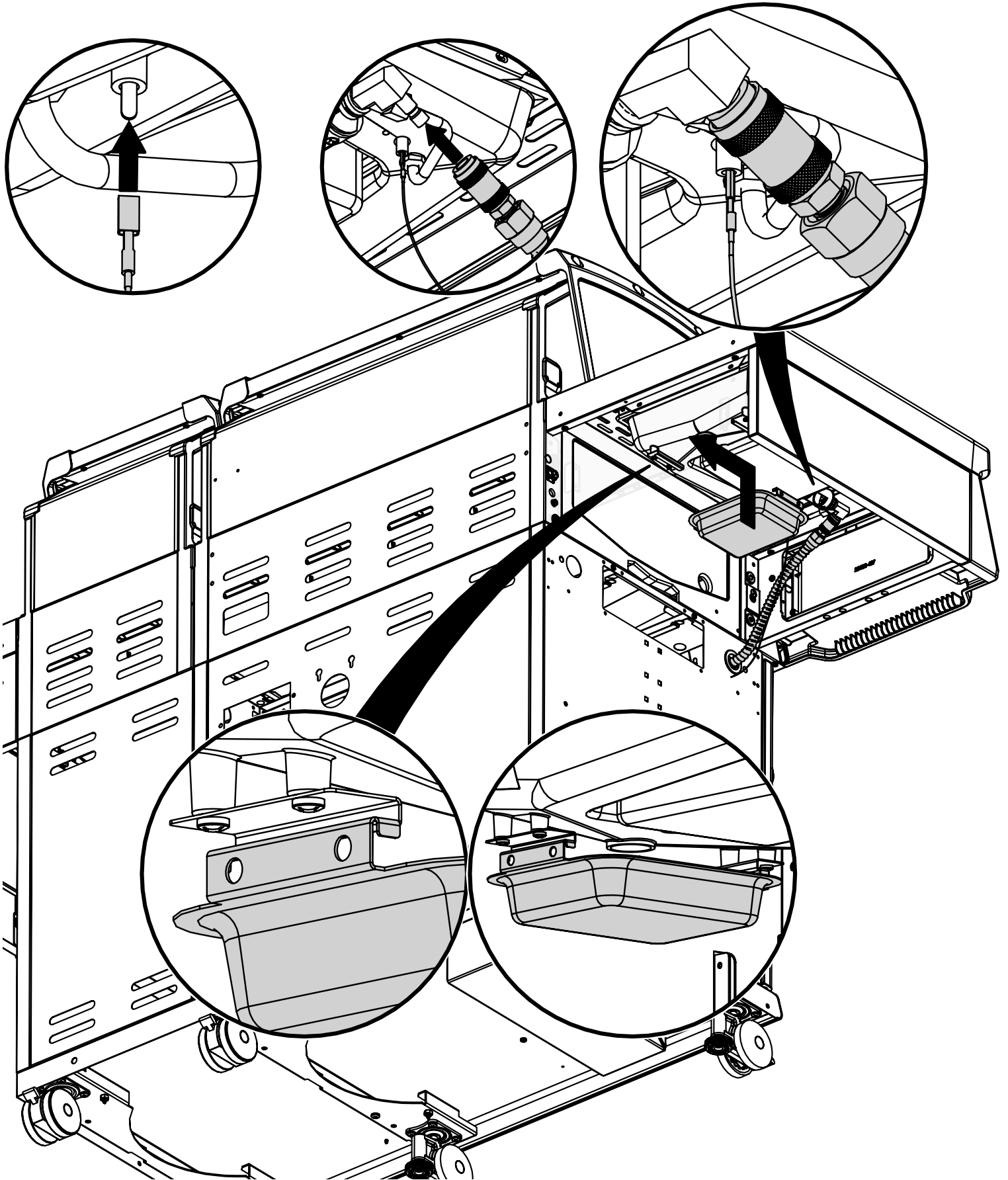
5



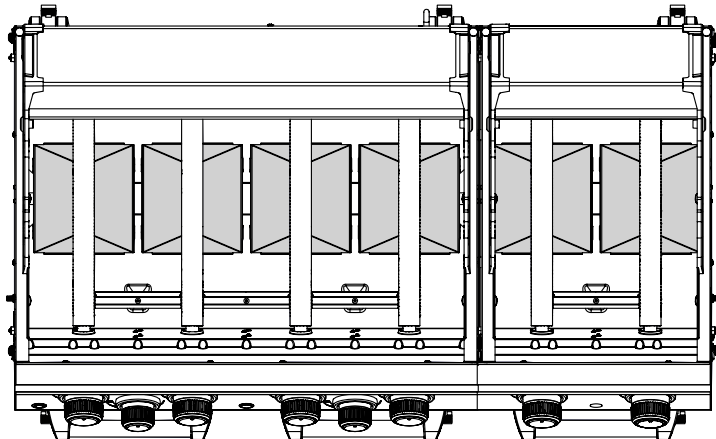
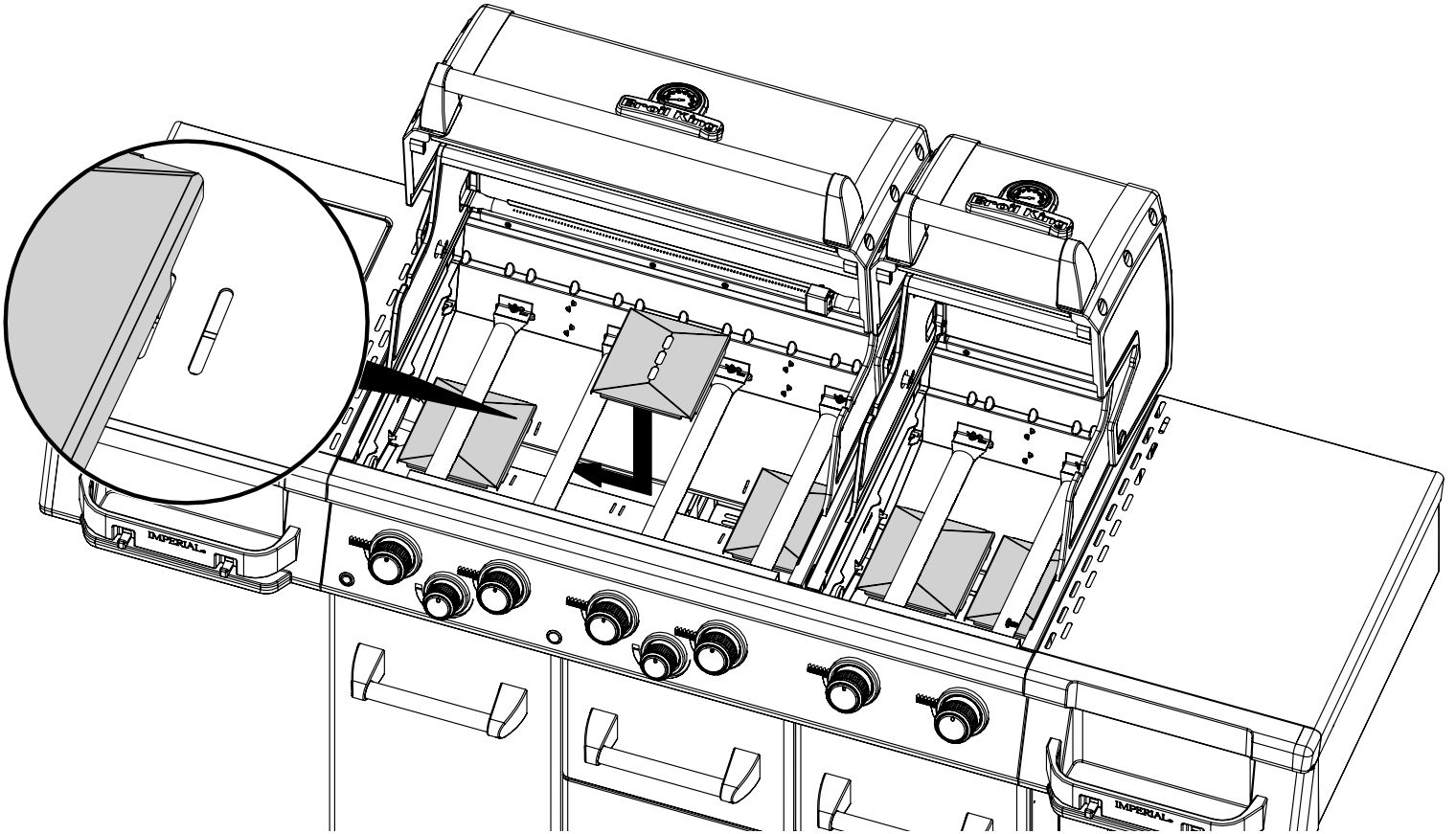
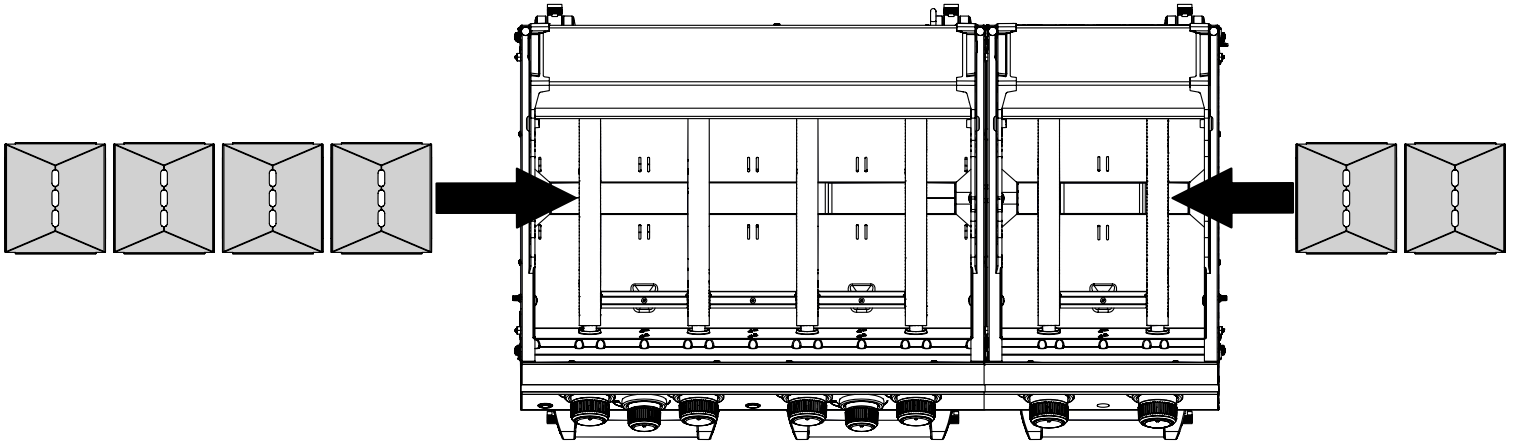
6

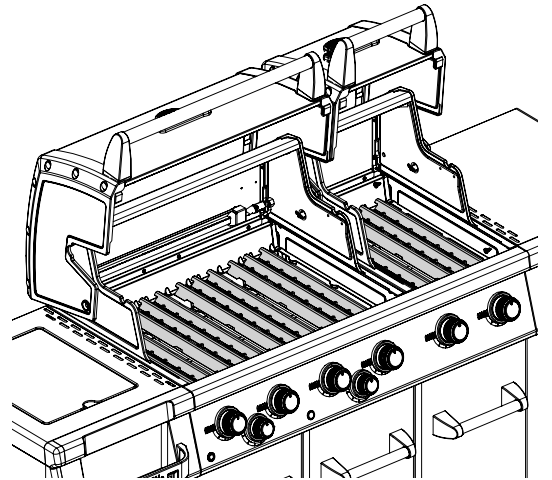
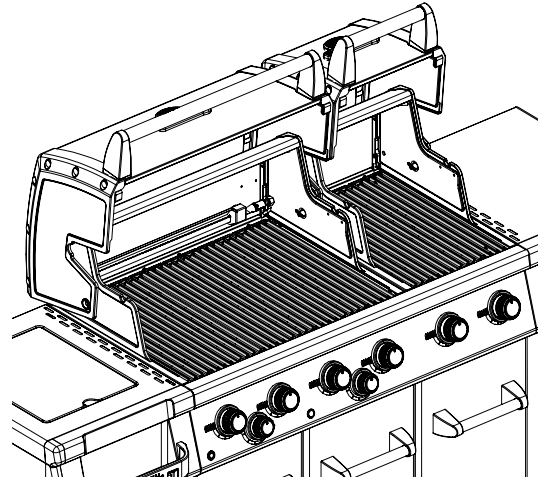
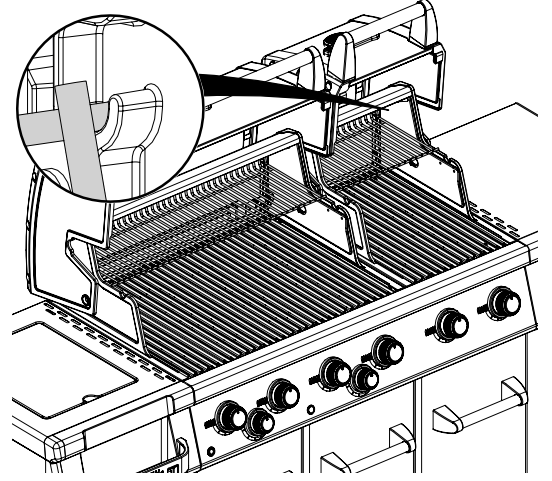
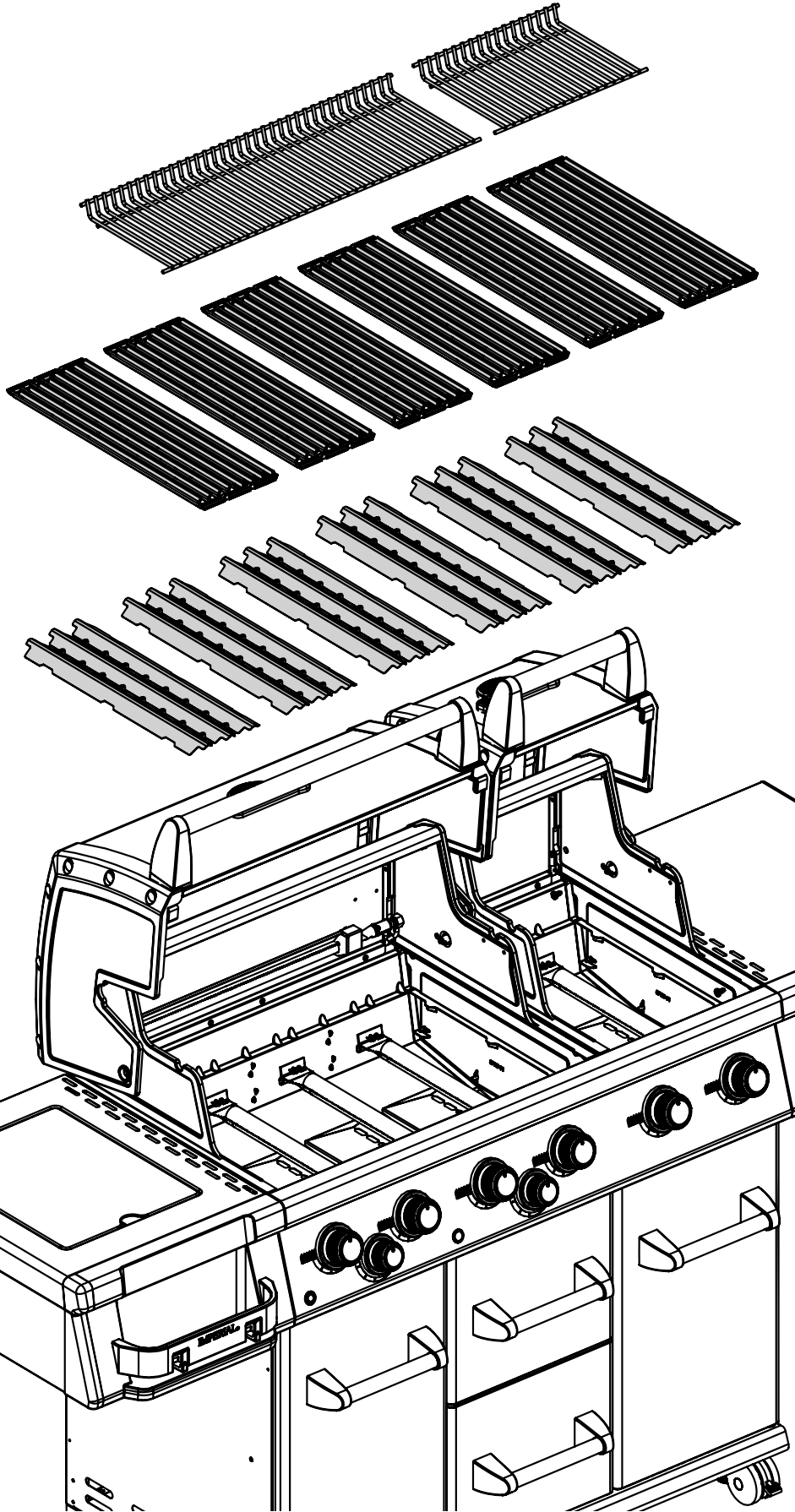


7

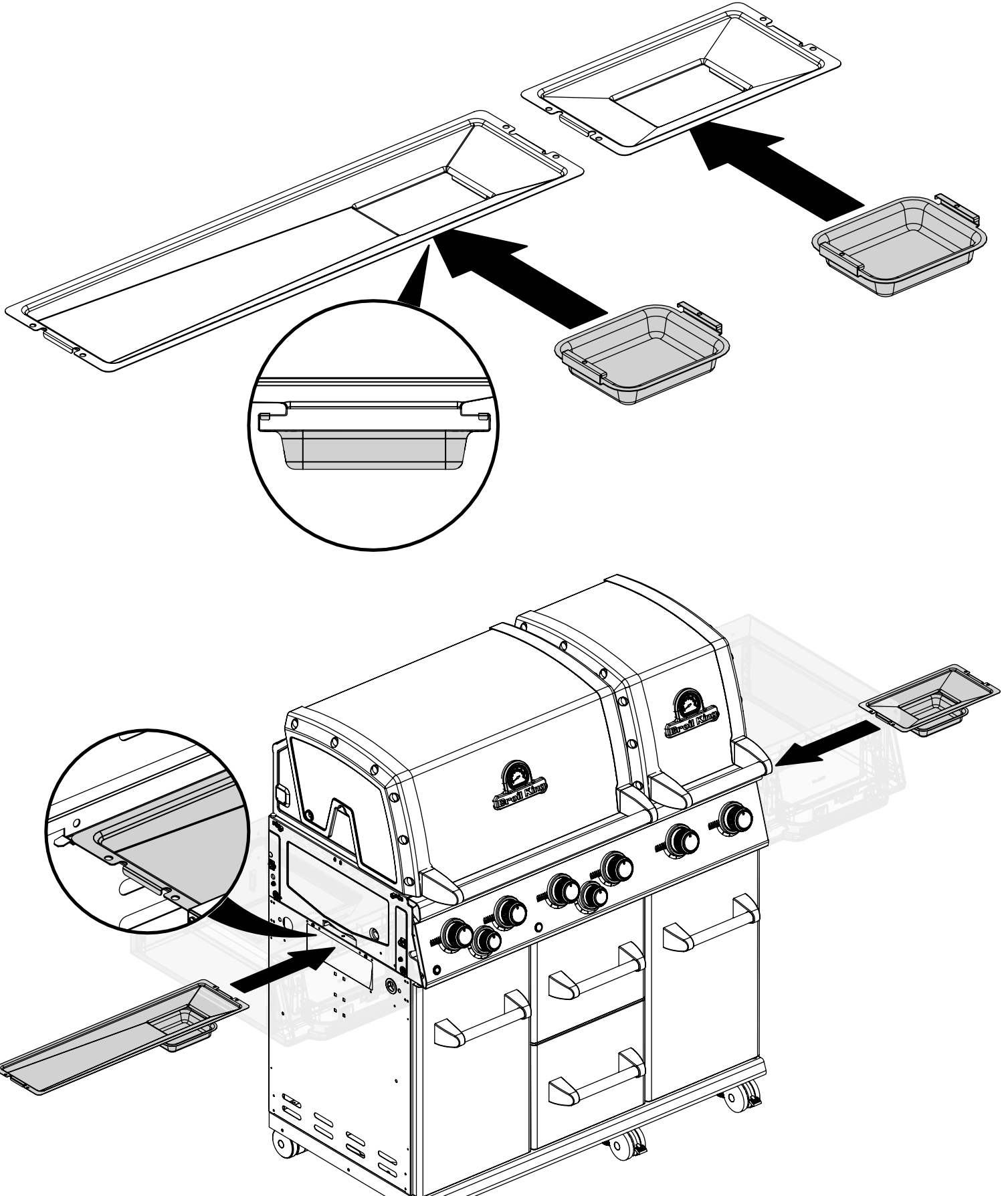


8

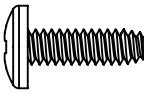


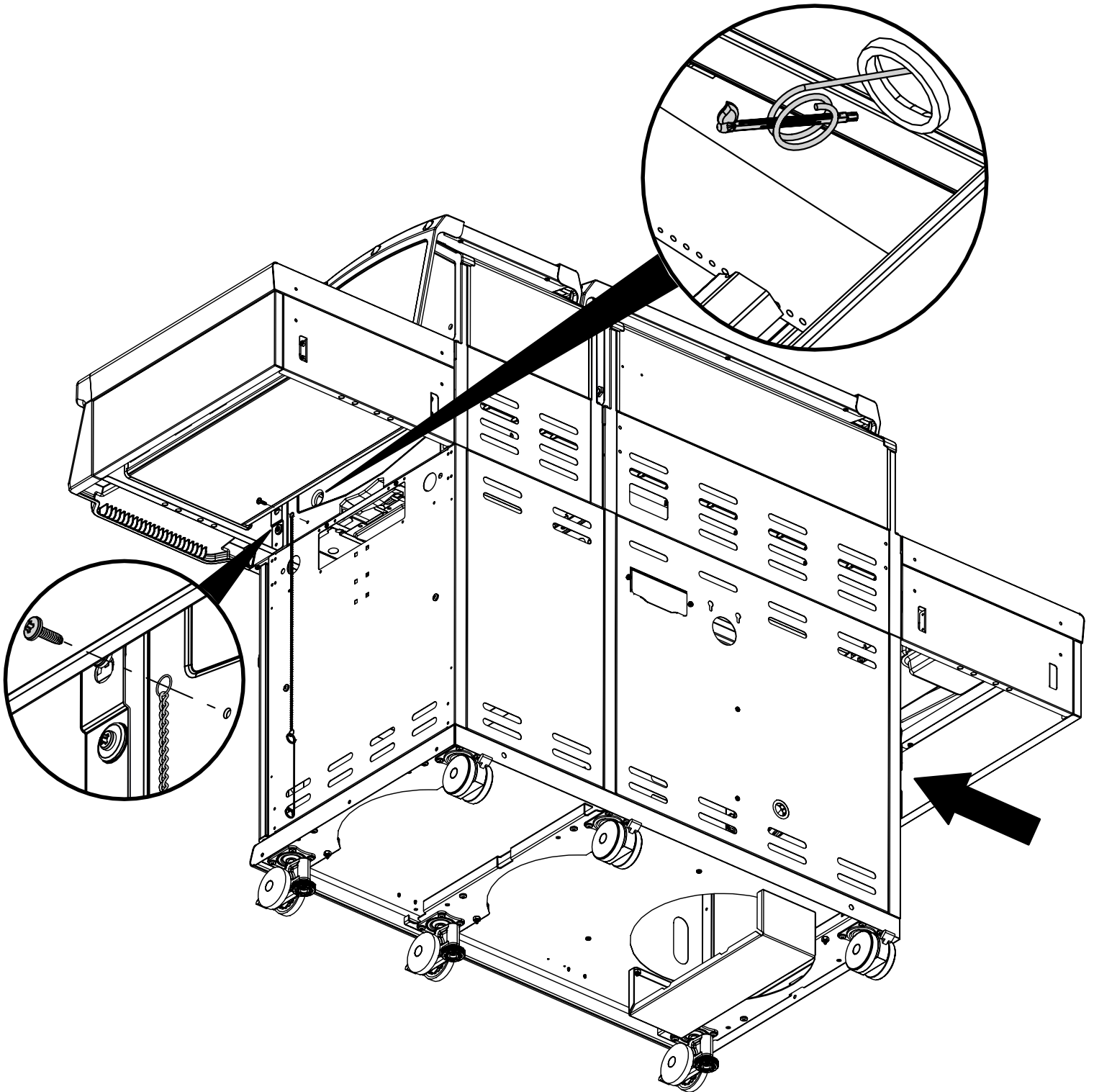


10

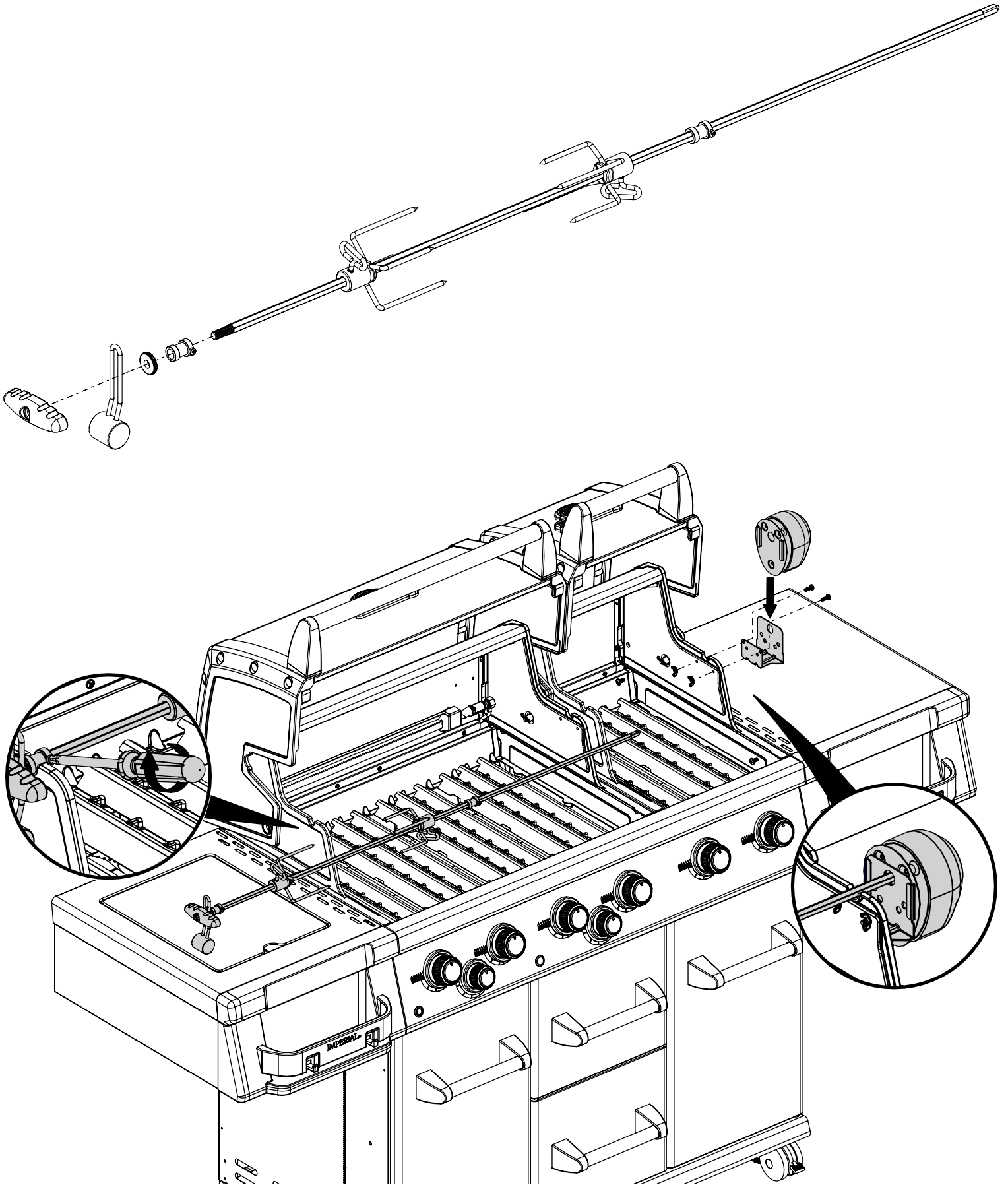


11

(2)  (2)



12

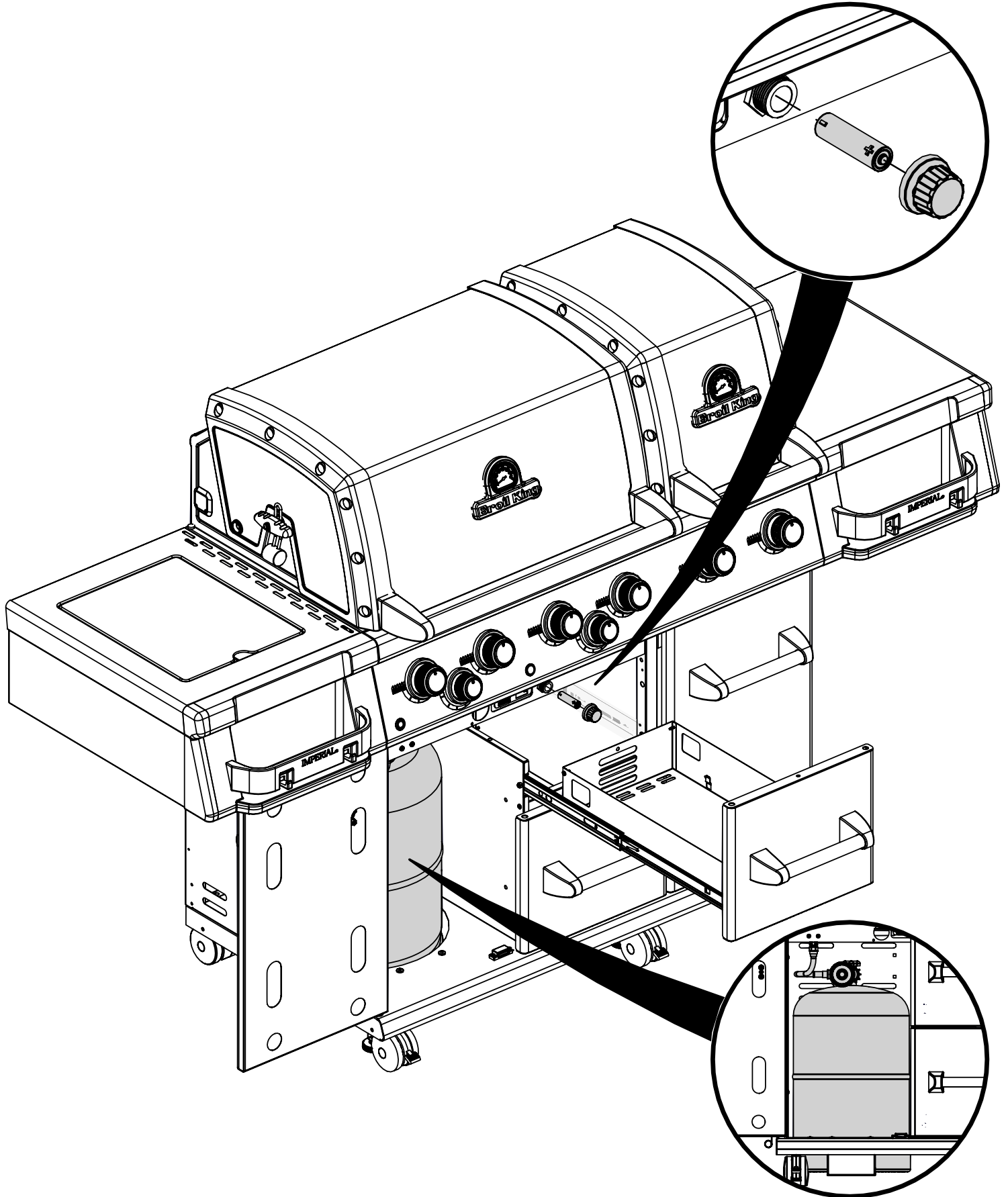


13

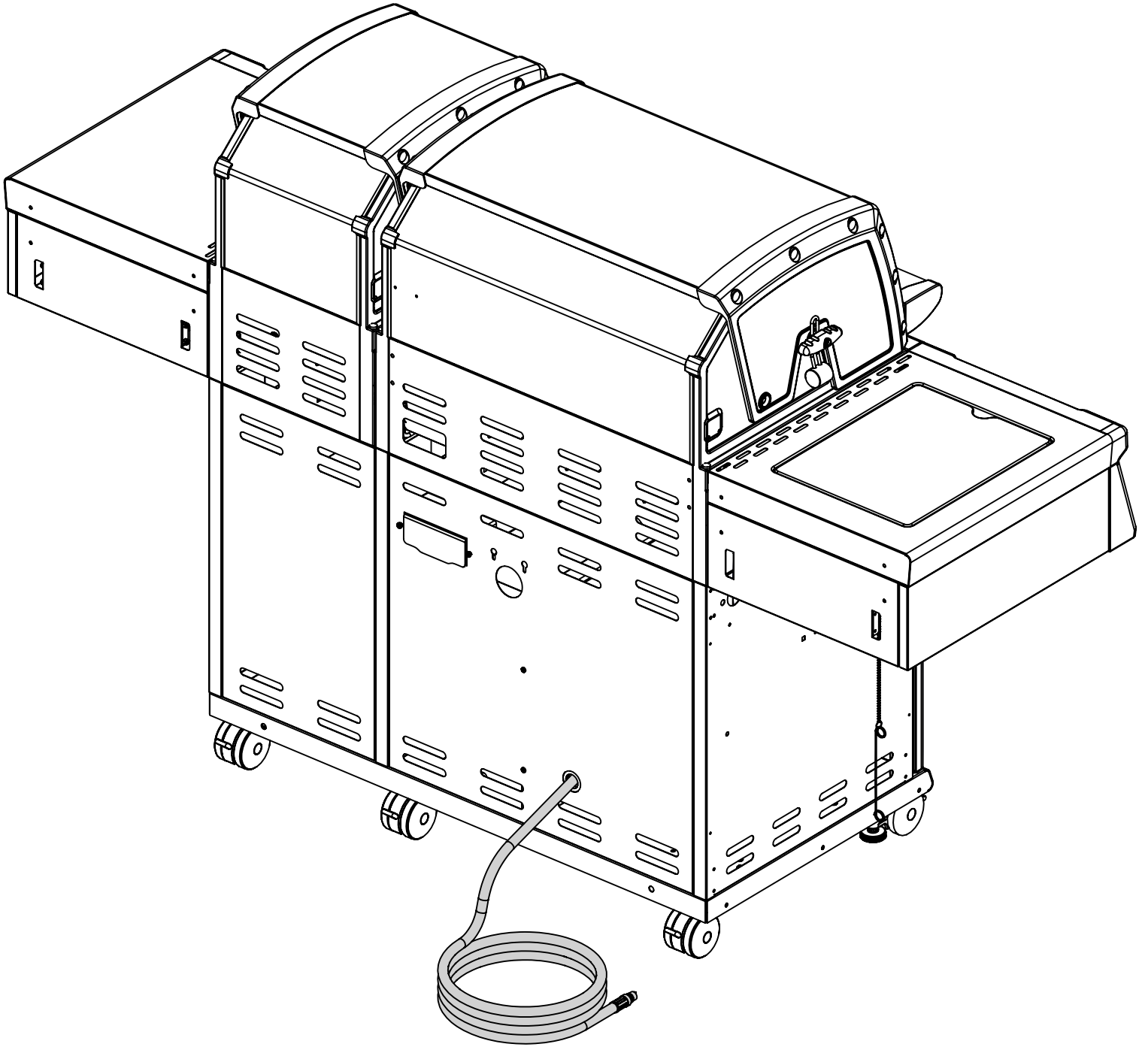
(1)

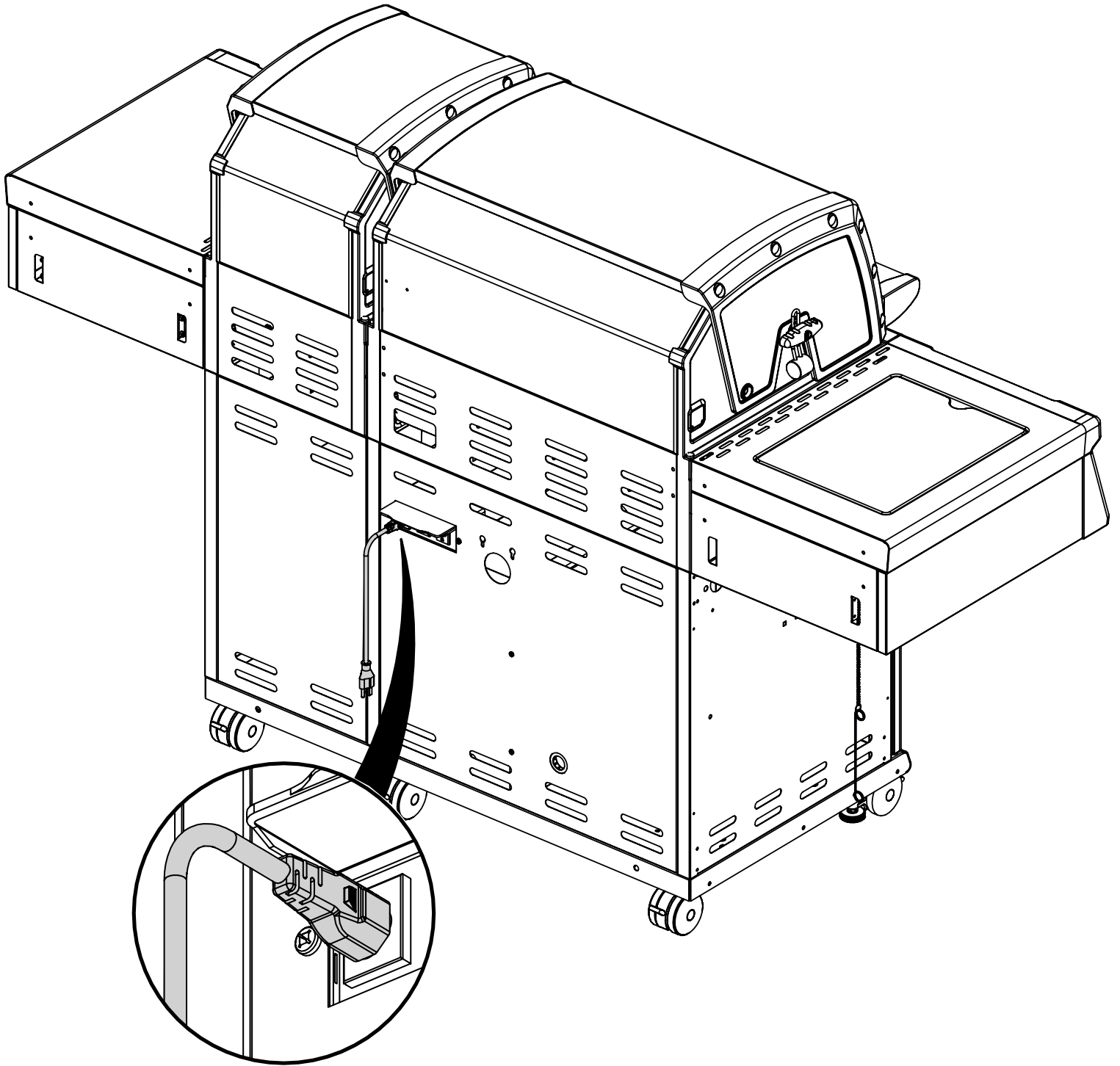


AAA



14





PARTS LIST / LISTE DES PIECES

| KEY # | ITEM # | DESCRIPTION | 9977-82IR | 9977-83IR | 9977-86IR | 9979-82 | 9979-83 | 9979-86 |
|-------|--------------|----------------------------|-----------|-----------|-----------|---------|---------|---------|
| 1 | 27008-703 | FIRE BOX ASSEMBLY | 1 | 1 | 1 | 1 | 1 | 1 |
| 1A | 27003-703 | FIRE BOX ASSEMBLY | 1 | 1 | 1 | 1 | 1 | 1 |
| 2 | 86005-301 | LID ASSEMBLY | 1 | 1 | 1 | . | . | . |
| | 86005-303 | LID ASSEMBLY | . | . | . | 1 | 1 | 1 |
| 2A | 86003-301 | LID ASSEMBLY | 1 | 1 | 1 | . | . | . |
| | 86003-303 | LID ASSEMBLY | . | . | . | 1 | 1 | 1 |
| 5 | 27249-904 | GREASE SHIELD | 6 | 6 | 6 | 6 | 6 | 6 |
| 7 | Y-11544S | BURNER SCREW | 6 | 6 | 6 | 6 | 6 | 6 |
| 8 | S21242 | BURNER MOUNT CLIP | 6 | 6 | 6 | 6 | 6 | 6 |
| 18 | 22005-283 | CAST STAINLESS STEEL GRID | 1 | 1 | 1 | 1 | 1 | 1 |
| 20 | 22005-991 | GRID - WARMING RACK | 1 | 1 | 1 | 1 | 1 | 1 |
| 20A | 22003-991 | GRID - WARMING RACK | 1 | 1 | 1 | 1 | 1 | 1 |
| 22 | 22225-014A | COLLECTOR BOX ASSEMBLY | 1 | 1 | 1 | 1 | 1 | 1 |
| 22A | 22223-014A | COLLECTOR BOX ASSEMBLY | 1 | 1 | 1 | 1 | 1 | 1 |
| 25 | 22909-104D | BURNER | 6 | . | . | 6 | . | . |
| | 22909-104E | BURNER | . | 6 | . | . | 6 | . |
| | 22909-104NGE | BURNER | . | . | 6 | . | . | 6 |
| 26 | 22001-769 | CONTROL KNOB | 6 | 6 | 6 | 6 | 6 | 6 |
| 26A | 22001-669 | CONTROL KNOB | 2 | 2 | 2 | 2 | 2 | 2 |
| 27 | 22002-264 | CONTROL BEZEL | 6 | 6 | 6 | 6 | 6 | 6 |
| 27A | 22001-164 | CONTROL BEZEL | 2 | 2 | 2 | 2 | 2 | 2 |
| 28 | 27028-493 | CONTROL COVER | 1 | 1 | 1 | 1 | 1 | 1 |
| 29 | Y-12678 | BEZEL STOP | 1 | 1 | 1 | 1 | 1 | 1 |
| 30 | Y-12674 | KNOB ADAPTER | 1 | 1 | 1 | 1 | 1 | 1 |
| 32 | 10111-15A | HOSE ASSEMBLY | 1 | 1 | 1 | 1 | 1 | 1 |
| 33 | 10153-93 | QUICK DISCONNECT FITTING | 1 | 1 | 1 | 1 | 1 | 1 |
| 34 | S13473-IR | HOSE-SIDE BURNER | 1 | 1 | 1 | 1 | 1 | 1 |
| 34A | Y-11230 | HITCH CLIP - SIDE BURNER | 1 | 1 | 1 | 1 | 1 | 1 |
| 35 | 29018-072 | CONTROL ASSEMBLY | 1 | . | . | 1 | . | . |
| | 29018-075 | CONTROL ASSEMBLY | . | 1 | . | . | 1 | . |
| | 29018-076 | CONTROL ASSEMBLY | . | . | . | . | . | 1 |
| 36 | 10342-T21 | ELECTRODE - SIDE BURNER | 1 | 1 | 1 | 1 | 1 | 1 |
| 37 | 20809-957 | TUBE-REAR BURNER ASSY | 1 | 1 | 1 | 1 | 1 | 1 |
| 38 | Y-11990 | HEX NUT | 1 | 1 | 1 | 1 | 1 | 1 |
| 39 | 10110-74 | TUBE - COMPRESSION FITTING | 1 | 1 | 1 | 1 | 1 | 1 |
| 41 | 20153-64 | ORIFICE ADAPTER | 1 | 1 | 1 | 1 | 1 | 1 |
| 42 | 10153-79 | GAS FITTING | 1 | 1 | 1 | 1 | 1 | 1 |
| 43 | 10342-E13 | ELECTRODE | 2 | 2 | 2 | 2 | 2 | 2 |
| 43A | 10342-E22 | ELECTRODE | 1 | 1 | 1 | 1 | 1 | 1 |
| 44 | 10342-45 | ELECTRODE | 1 | 1 | 1 | 1 | 1 | 1 |
| 44A | 25070-92 | ELECTRONIC IGNITOR | 1 | 1 | 1 | 1 | 1 | 1 |
| 44B | 25070-93 | IGNITOR HARNESS | 1 | 1 | 1 | 1 | 1 | 1 |
| 45 | 10693-073 | IGNITOR BUTTON | 1 | . | . | 1 | . | . |
| | 10693-079 | ORIFICE | . | 1 | . | . | 1 | . |
| | 10693-109 | ORIFICE | . | . | 1 | . | . | 1 |
| 46 | 23039-274 | GREASE PAN SUPPORT | 2 | 2 | 2 | 2 | 2 | 2 |
| 47 | 21035-991 | GREASE RAILS | 2 | 2 | 2 | 2 | 2 | 2 |
| 47A | 21033-991 | GREASE RAILS | 2 | 2 | 2 | 2 | 2 | 2 |
| 48 | 22009-901 | GREASE PAN | 3 | 3 | 3 | 3 | 3 | 3 |
| 49 | 27055-901 | GREASE TRAY | 1 | 1 | 1 | 1 | 1 | 1 |
| 49A | 27053-901 | GREASE TRAY | 1 | 1 | 1 | 1 | 1 | 1 |

PARTS LIST / LISTE DES PIECES

| KEY # | ITEM # | DESCRIPTION | 9977-82IR | 9977-83IR | 9977-86IR | 9979-82 | 9979-83 | 9979-86 |
|-------|-------------|--------------------------|-----------|-----------|-----------|---------|---------|---------|
| 51 | 22209-903 | FLAV-R-WAVE® | 6 | 6 | 6 | 6 | 6 | 6 |
| 56 | 24005-239 | HANDLE | 1 | 1 | 1 | 1 | 1 | 1 |
| 56A | 24003-239 | HANDLE | 1 | 1 | 1 | 1 | 1 | 1 |
| 58 | 26009-917 | HANDLE END CAP | 4 | 4 | 4 | 4 | 4 | 4 |
| 58A | 24009-938 | HANDLE WEDGE | 4 | 4 | 4 | 4 | 4 | 4 |
| 59 | 10081-BK630 | NAMEPLATE | 2 | 2 | 2 | 2 | 2 | 2 |
| 60 | 10571-6 | HEAT INDICATOR | 2 | 2 | 2 | 2 | 2 | 2 |
| 65 | 20005-000 | MATCH LIGHT - STICK | 2 | 2 | 2 | 2 | 2 | 2 |
| 68 | 23275-111A | RIGHT DOOR | 1 | 1 | 1 | 1 | 1 | 1 |
| | 23275-113A | RIGHT DOOR | 1 | 1 | 1 | 1 | 1 | 1 |
| 69 | 23275-131A | LEFT DOOR | 1 | 1 | 1 | 1 | 1 | 1 |
| | 23275-133A | LEFT DOOR | 1 | 1 | 1 | 1 | 1 | 1 |
| 70 | 21079-906 | HANDLE END CAP | 8 | 8 | 8 | 8 | 8 | 8 |
| 71 | 21171-23 | HANDLE - SMALL | 4 | 4 | 4 | 4 | 4 | 4 |
| 74 | Y-99100 | DRAWER SLIDE | 2 | 2 | 2 | 2 | 2 | 2 |
| 77 | 21165-111A | DRAWER ASSEMBLY | 2 | 2 | 2 | 2 | 2 | 2 |
| | 21165-113A | DRAWER ASSEMBLY | 1 | 1 | 1 | 1 | 1 | 1 |
| 78 | 21335-111 | BRACKET - DOOR CATCH | 1 | 1 | 1 | 1 | 1 | 1 |
| 78A | 21333-921 | BRACKET - DOOR CATCH | 1 | 1 | 1 | 1 | 1 | 1 |
| 80 | 21109-905R | SIDE PANEL | 3 | 3 | 3 | 3 | 3 | 3 |
| 82 | 25208-201R | SHELF - CABINET | 1 | 1 | 1 | 1 | 1 | 1 |
| 83 | 21065-901R | DRAWER CENTER MOUNT | 1 | 1 | 1 | 1 | 1 | 1 |
| 84 | 21069-901 | DRAWER SUPPORT | 1 | 1 | 1 | 1 | 1 | 1 |
| 88 | 21305-925R | PANEL - REAR | 1 | 1 | 1 | 1 | 1 | 1 |
| 88A | 25308-925R | PANEL - REAR | 1 | 1 | 1 | 1 | 1 | 1 |
| 90 | 25098-935 | BASE | 1 | 1 | 1 | 1 | 1 | 1 |
| | 95098-955 | BASE | 1 | 1 | 1 | 1 | 1 | 1 |
| 100 | 21039-911 | BRACKET - CASTOR SUPPORT | 3 | 3 | 3 | 3 | 3 | 3 |
| 101 | 21039-301 | LOWER TANK SUPPORT | 1 | 1 | 1 | 1 | 1 | 1 |
| 102 | 10892-23 | CASTOR | 3 | 3 | 3 | 3 | 3 | 3 |
| 102A | 10892-285 | CASTOR | 3 | 3 | 3 | 3 | 3 | 3 |
| 114 | 23102-613 | SHELF | 1 | 1 | 1 | 1 | 1 | 1 |
| 115 | 23102-653 | SHELF-SIDE BURNER | 1 | 1 | 1 | 1 | 1 | 1 |
| 124 | 23090-27 | SIDE BURNER BODY | 1 | 1 | 1 | 1 | 1 | 1 |
| 125 | 23000-253 | COVER-SIDE BURNER | 1 | 1 | 1 | 1 | 1 | 1 |
| 126 | 20390-74 | SIDE BURNER | 1 | 1 | 1 | 1 | 1 | 1 |
| 127 | 18670 | SIDE BURNER SCREEN | 1 | 1 | 1 | 1 | 1 | 1 |
| 128 | 23001-79 | GRID | 1 | 1 | 1 | 1 | 1 | 1 |
| 130 | 27905-354 | BURNER ROTISSERIE | 1 | 1 | 1 | 1 | 1 | 1 |
| 131 | 10693-095 | REAR BURNER-ORIFICE | 1 | 1 | 1 | 1 | 1 | 1 |
| | 10693-099 | REAR BURNER-ORIFICE | 1 | 1 | 1 | 1 | 1 | 1 |
| | 10693-109 | REAR BURNER-ORIFICE | 1 | 1 | 1 | 1 | 1 | 1 |
| 133 | S15271 | HANDLE | 1 | 1 | 1 | 1 | 1 | 1 |
| 134 | S15270 | BALANCER | 1 | 1 | 1 | 1 | 1 | 1 |
| 135 | S15299 | WASHER | 1 | 1 | 1 | 1 | 1 | 1 |
| 136 | S15263 | BUSHING | 2 | 2 | 2 | 2 | 2 | 2 |
| 137 | S15260 | SPIT ROD | 1 | 1 | 1 | 1 | 1 | 1 |
| 138 | S15287 | 4 PRONG FORKS | 2 | 2 | 2 | 2 | 2 | 2 |
| 139 | 57039-901 | ROTISSERIE BRACKET | 1 | 1 | 1 | 1 | 1 | 1 |
| 140 | S21125 | SCREW #8 X 1/2 | 6 | 6 | 6 | 6 | 6 | 6 |
| 141 | Y-11559 | SCREW 1/4-20X 3/4 | 12 | 12 | 12 | 12 | 12 | 12 |

PARTS LIST / LISTE DES PIECES

| KEY # | ITEM # | DESCRIPTION | 9977-82IR | 9977-83IR | 9977-86IR | 9979-82 | 9979-83 | 9979-86 |
|-------|------------|-----------------------|-----------|-----------|-----------|---------|---------|---------|
| 142 | S21127S | SCREW #8-32 X 7/16 | 8 | 8 | 8 | 8 | 8 | 8 |
| 144 | Y-12220 | BUSHING | 1 | 1 | 2 | 1 | 1 | 2 |
| 145 | S21235 | HINGE PIN | 2 | 2 | 2 | 2 | 2 | 2 |
| 145A | 10240-17 | HINGE PIN | 1 | 1 | 1 | 1 | 1 | 1 |
| 146 | S21233 | HITCH PIN CLIP | 3 | 3 | 3 | 3 | 3 | 3 |
| 147 | Y-11231 | LID BUMPER | 4 | 4 | 4 | 4 | 4 | 4 |
| 148 | 10240-20 | DOOR PIN | 2 | 2 | 2 | 2 | 2 | 2 |
| 149 | Y-11551 | DOOR PIN | 2 | 2 | 2 | 2 | 2 | 2 |
| 150 | Y-12124 | DOOR PIN CAP | 2 | 2 | 2 | 2 | 2 | 2 |
| 151 | Y-11567 | SCREW M8 SHOULDER | 8 | 8 | 8 | 8 | 8 | 8 |
| 152 | Y-12222 | MAGNET | 2 | 2 | 2 | 2 | 2 | 2 |
| 153 | Y-12223 | SNAP IN MAGNET | 2 | 2 | 2 | 2 | 2 | 2 |
| 154 | Y-11560 | SCREW 1/4-20 X 1-1/2 | 12 | 12 | 12 | 12 | 12 | 12 |
| 155 | S21124 | SCREW #8 X 1/2 | 28 | 28 | 28 | 28 | 28 | 28 |
| 156 | Y-11793 | NUT 1/4-20 | 14 | 14 | 10 | 14 | 14 | 10 |
| 157 | Y-12835 | SCREW #6-32 X 1/4 | 2 | 2 | 2 | 2 | 2 | 2 |
| 158 | Y-12646 | SHOULDER SCREW #8-32 | 2 | 2 | 2 | 2 | 2 | 2 |
| 159 | S21136 | SCREW #8-32 X 3/8 | 22 | 22 | 22 | 22 | 22 | 22 |
| 160 | Y-29304 | SCREW #10-24 X 3/8 | 2 | 2 | 2 | 2 | 2 | 2 |
| 161 | Y-29310 | SCREW #10-24 | 4 | 4 | 4 | 4 | 4 | 4 |
| 162 | S35095 | SCREW #10-24 X 3/4 | 2 | 2 | 2 | 2 | 2 | 2 |
| 163 | S35094 | SCREW #10-24 X 5/8 | 2 | 2 | 2 | 2 | 2 | 2 |
| 164 | S21084 | SCREW #14 X 5/8 | 8 | 8 | 8 | 8 | 8 | 8 |
| 169 | S21061 | WING NUT | 2 | 2 | 2 | 2 | 2 | 2 |
| 170 | Y-12084 | NUT - 10-24 | 6 | 6 | 6 | 6 | 6 | 6 |
| 171 | S15246 | ROTISSERIE MOTOR | 1 | 1 | 1 | 1 | 1 | 1 |
| 172 | S15517-011 | ELECTRODE ASSEMBLY | 1 | 1 | 1 | 1 | 1 | 1 |
| | S15517-018 | ELECTRODE ASSEMBLY | . | . | . | . | . | . |
| 173 | S21362 | SPRING | 1 | 1 | 1 | 1 | 1 | 1 |
| 181 | 25070-91 | WIRE - OVEN LIGHT | 1 | 1 | 1 | 1 | 1 | 1 |
| 181A | 25070-95 | LIGHT SWITCH | 1 | 1 | 1 | 1 | 1 | 1 |
| 182 | 25020-71 | OVEN LIGHT | 3 | 3 | 3 | 3 | 3 | 3 |
| 183 | 20589-CH | TRANSFORMER PLUG | . | 1 | 1 | 1 | 1 | 1 |
| | 20589-EU | TRANSFORMER PLUG | 1 | 1 | 1 | 1 | 1 | 1 |
| | 20589-UK | TRANSFORMER PLUG | . | 1 | 1 | 1 | 1 | 1 |
| 184 | 20589-90U | TRANSFORMER | 1 | 1 | 1 | 1 | 1 | 1 |
| 185 | 25030-72 | WIRE - OVEN LIGHT | 1 | 1 | 1 | 1 | 1 | 1 |
| 186 | Y-12865 | SCREW 1/4-20 X 1/2 | 43 | 43 | 39 | 43 | 43 | 39 |
| 187 | 25030-70 | WIRE - OVEN LIGHT | 1 | 1 | 1 | 1 | 1 | 1 |
| 190 | 25020-84 | WIRE - LED LIGHTS | 1 | 1 | 1 | 1 | 1 | 1 |
| 191 | 25020-84 | WIRE - LED LIGHTS | 1 | 1 | 1 | 1 | 1 | 1 |
| 192 | Y-29306 | SCREW #10-24 X 3/4 | 4 | 4 | 4 | 4 | 4 | 4 |
| 193 | SP11-25 | LID BUMPER | 4 | 4 | 4 | 4 | 4 | 4 |
| 194 | S15508 | REAR BURNER ELECTRODE | 1 | 1 | 1 | 1 | 1 | 1 |

