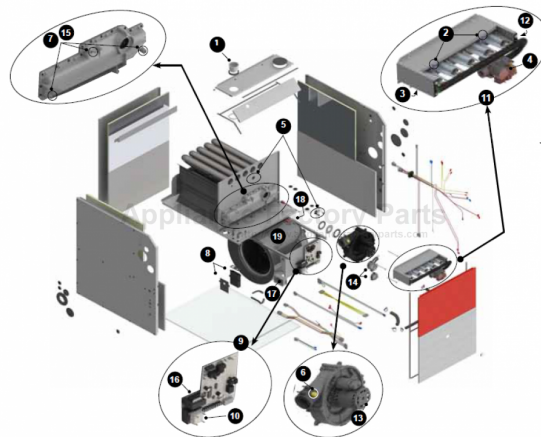


This Owner's Manual is provided and hosted by [Appliance Factory Parts](http://Appliance Factory Parts).



# Napoleon WPV120T5BA-N Owner's Manual

[Shop genuine replacement parts for Napoleon  
WPV120T5BA-N](#)



[Find Your Napoleon HVAC Parts - Select From 105 Models](#)

----- Manual continues below -----

# NAPOLEON

9600 SERIES GAS FURNACES



9600 SERIES GAS FURNACES  
[napoleon.com](http://napoleon.com)

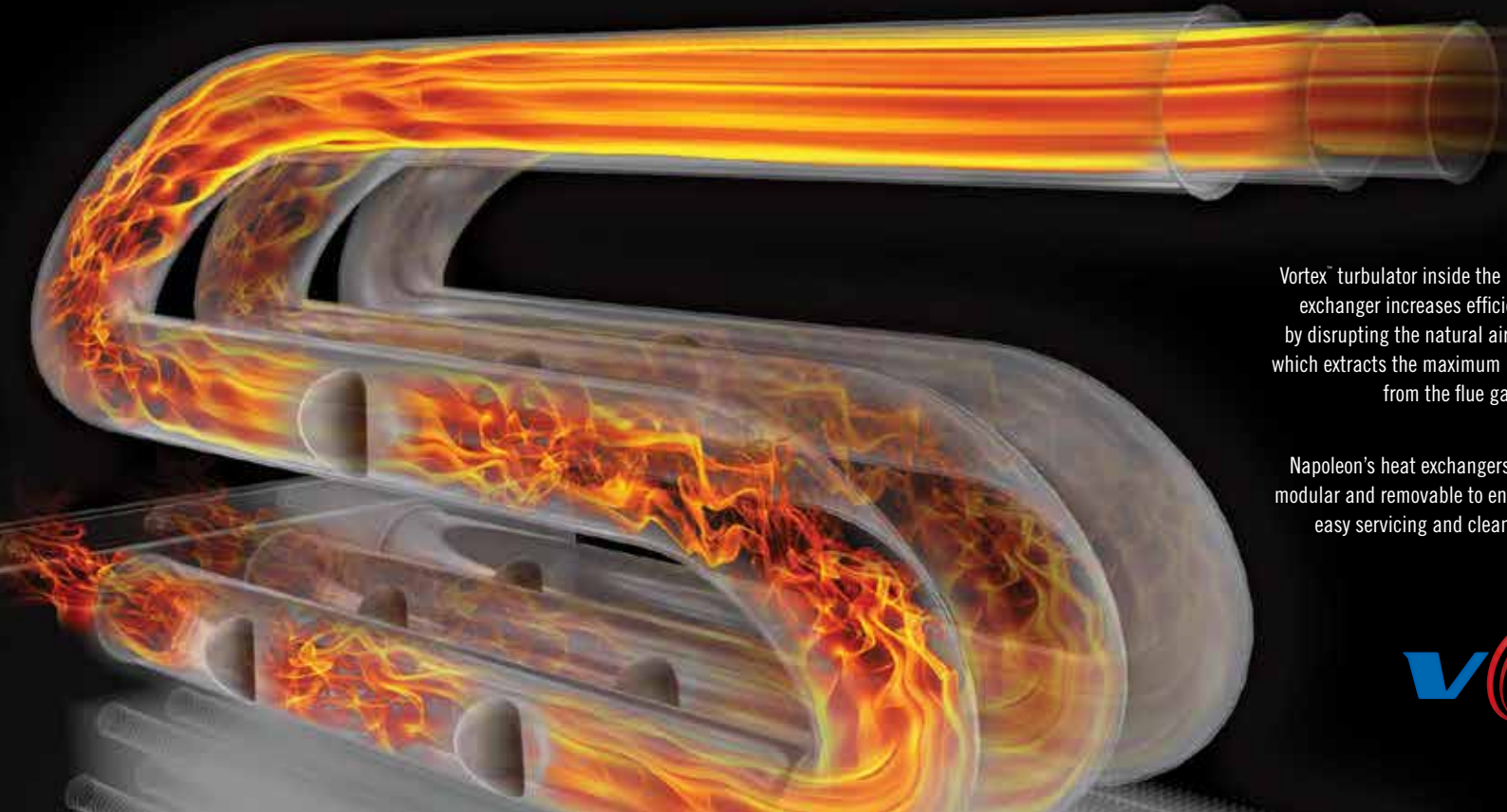
# THINK DIFFERENT. THINK NAPOLEON

Napoleon's 9600 Series is one of the most stylish and efficient furnaces on the market. Boasting a two stage variable speed EnerSave Plus, it will meet all your heating needs.

The 9600 Series uses the first, low-fire stage for greater efficiency throughout the heating season. During colder days, the furnace automatically produces additional heat for your home. This effective two stage system is like having two furnaces in one. Napoleon's superior engineering provides comfortable temperatures throughout your home for many winters to come.

With the 9600 Series furnace, you'll forget it's winter.

**That's Napoleon.**



Vortex™ turbulator inside the heat exchanger increases efficiency by disrupting the natural air flow, which extracts the maximum heat from the flue gas.

Napoleon's heat exchangers are modular and removable to enable easy servicing and cleaning.



# 9600 SERIES GAS FURNACES



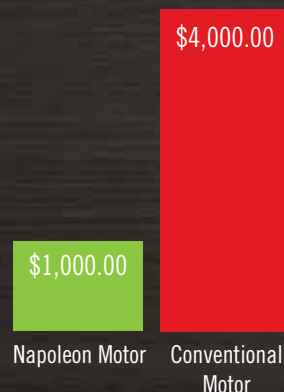
## ENERGY SAVINGS & COMFORT ANNUAL FUEL UTILIZATION EFFICIENCY (AFUE)

AFUE works much like the miles-per-gallon rating on a car - the higher the rating, the lower the Utilization Efficiency means more comfort for every dollar spent. If a furnace is 25 years old or older, it may only have 55% to 65% AFUE.



**96% + AFUE TRANSLATES  
INTO SIGNIFICANTLY LOWER  
FUEL BILLS**

Cost Comparison of Motors  
Over Five Years



## SUREVIEW BURNER SYSTEM

Patented SureView burner system window allows a unique view of the flames in operation, a first in the industry.



# CLEAN AIR TECHNOLOGY

## HOMESHIELD ULTRA-VIOLET AIR PURIFICATION

Napoleon's 9600 offers the option of installing a HomeShield UV lamp directly into the cabinet of the furnace. This allows the air passing through the furnace to be purified with HomeShield's UV technology before it circulates through your home.



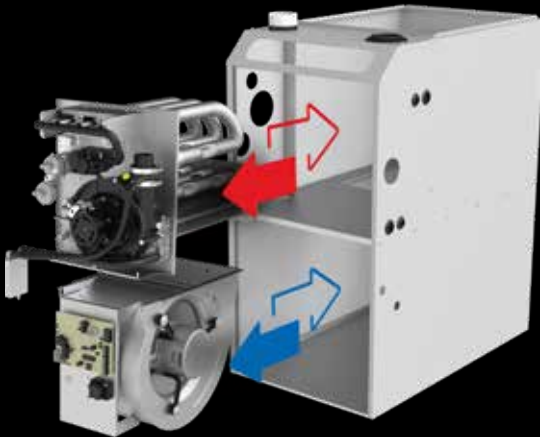
HomeShield uses chemical free, ultra-violet light to intercept airborne pathogens like allergens and dust mites. It halts bacterial growth from reoccurring and helps to maintain healthy air in your home.



# MODULAR

## INDIVIDUAL COMPONENTS

Napoleon's innovative modular design allows for easy handling, and cleaning. With a removable heat exchanger and blower compartment, servicing a Napoleon furnace is a whole new experience.



# WHISPER QUIET

## SOFT START MOTOR

With Napoleon's Whisper Quiet™ optional Pro motors will 'soft start' & 'soft stop' reducing the noise created by conventional motors.



Washing Machine

Refrigerator

Napoleon Furnaces

A Whisper

# INSTALLATION OPTIONS

## FLEXFIT FOR CONVENIENCE

Napoleon's 9600 Series offers zero clearance in all positions, providing installation ease in closets and alcoves with no additional kits required. Manufactured for natural gas, with the option of simple conversion to propane. Napoleon's 9600 Series one of the smallest 96% AFUE furnaces on the market.



Upflow



Horizontal

# FUTURE READY

## WIFI CAPABLE

Napoleon's 9600 is compatible with smart thermostat technology. Easily paired with a wide variety of thermostats and control boards, the 9600 is compatible with your home.



COMFORT CONTROLS FROM  
WHEREVER YOU ARE

# VARIABLE SPEED TECHNOLOGY

## EFFICIENCY FOR YOUR HOME

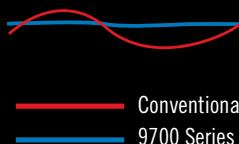
Napoleon's motors use variable speed technology, creating runs longer at lower capacity - 60% versus 100%. The blow the year, reduces electrical consumption by up to 80% over fuel and money.



VARIABLE SPEED  
TECHNOLOGY

## TWO-STAGE TECHNOLOGY

72°F  
71°F  
70°F  
69°F  
68°F



# OUR DIFFERENCE IS IN THE DETAILS

## 7 WAYS TO COUNT ON THE BEST

### 1 Aluminized Multi-Port in Shot Burners

- Perfectly shapes the flame cone for maximum flame efficiency

### 2 Two-Stage Gas Valve

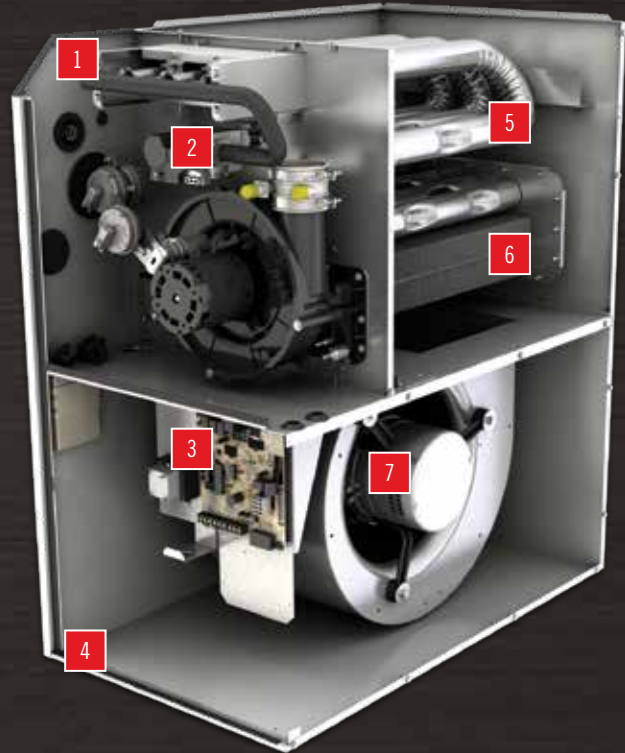
- First/low-stage operates at 60% of full capacity for optimum fuel efficiency on most days
- Second/high-stage provides maximum heat for bitter cold days and quick recovery from thermostat set back

### 3 Self Diagnostic Integrated Furnace Control (IFC)

- Contains LED service indicator lights to ensure quick and accurate service diagnosis
- Constantly monitors all safety devices
- Interfaces with additional home comfort products using simple plug-in connections

### 4 Durable Sound Reducing Insulated Cabinet

- Acoustically insulated blower compartment & thermally insulated heat exchanger compartment for quiet operation and reduced clearance to combustibles



### 5 Corrosion Resistant Aluminized Heat Exchanger

- Controls temperature to create weak
- Each
- in the

### 6 Stainless Steel Blower

- Extracts
- once
- Backe
- Limited

### 7 Electronic Blower

- Reduc
- conve
- Soft-s
- by gra
- and ra
- On co
- consu
- for a c
- consu
- WHIS
- Blowe
- remov
- conne

**10** YEAR | UNIT REPLACEMENT  
HEAT EXCHANGER LIMITED WARRANTY

**LIFE TIME** | HEAT EXCHANGER  
LIMITED WARRANTY

**10** YEAR | PARTS  
LIMITED WARRANTY

\*See warranty for details

# 9600 SERIES GAS FURNACES

## MODEL COMPARISON

Series	Efficiency (AFUE)	Single Stage	Two-Stage	SureView Window	PSC Motor	Endura Pro Motor	ECM EnerSave EON Motor	Primary Stainless Steel Heat Exchanger	Secondary Stainless Steel Heat Exchanger	LED Cabinet Lights
9700	97%		•	•			•	•	•	•
9600	96%		•	•			•		•	
9500	95%	•				•			•	

## 9600 SERIES SPECIFICATIONS

HEATING CAPACITIES	WPV040T2AA-N	WPV060T3AA-N	WPV080T3AA-N	WPV080T4BA-N	WPV100T4BA-N
Efficiency (AFUE)	96%	96%	96%	96%	96%
Input (High fire) BTU/hr 0-4500'	40,000	60,000	80,000	80,000	100,000
Input (Low fire) BTU/hr 0-4500'	24,000	36,000	48,000	48,000	60,000
CABINET DIMENSIONS (INCHES)	WPV040T2AA-N	WPV060T3AA-N	WPV080T3AA-N	WPV080T4BA-N	WPV100T4BA-N
Width (in)	17 1/2	17 1/2	17 1/2	22 1/2	22 1/2
Depth (in)	29 1/2	29 1/2	29 1/2	29 1/2	29 1/2
Height (in)	34	34	34	34	34
VENTING *	WPV040T2AA-N	WPV060T3AA-N	WPV080T3AA-N	WPV080T4BA-N	WPV100T4BA-N
Clearances to Combustibles	0	0	0	0	0
Minimum Vent Size (in)	1 1/2	1.5	2	2	2
Maximum Vent Size (in)	2.5	3	3	3	3
Minimum Vent Length (ft)	15	15	15	15	15
Maximum Vent Length (ft)	75	100	100	100	100
AIRFLOW AND COOLING	WPV040T2AA-N	WPV060T3AA-N	WPV080T3AA-N	WPV080T4BA-N	WPV100T4BA-N
Motor Size	1/3 hp	1/2 hp	1/2 hp	3/4 hp	1 hp
AC Tonnages	1 1/2, 2, 2 1/2	1 1/2, 2, 2 1/2, 3	1 1/2, 2, 2 1/2, 3	2, 2 1/2, 3, 4	2, 3, 4

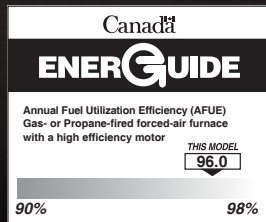
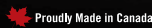
\*Certified for single or two pipe installation (direct vent)

# NAPOLEON - CELEBRATING OVER 40 YEARS OF HOME COMFORT PRODUCTS



24 Napoleon Road, Barrie, Ontario, Canada L4M 0G8  
 103 Miller Drive, Crittenden, Kentucky, USA 41030  
 7200 Trans Canada Highway, Montreal, Quebec, Canada H4T 1A3

Tel: 866-820-8686  
 napoleon.com



Authorized Dealer

All specifications and designs can change without notice to allow for on-going product improvement. Images may not be exactly as shown. Consult your owners manual for current information. Check all local and national building codes and gas regulations. Napoleon is a registered trademark of Wolf Steel Group Inc.