

This Owner's Manual is provided and hosted by [Appliance Factory Parts](#).



# Napoleon NBX040S2A Owner's Manual

[Shop genuine replacement parts for Napoleon  
NBX040S2A](#)

**9200 Series - Gas Furnace**



[Find Your Napoleon HVAC Parts - Select From 105 Models](#)

----- Manual continues below part list -----

## Available Replacement Parts for Napoleon NBX040S2A

[W357-0016-SER](#)

IGNITER, 601 TYP E TB 120V

NAPOLEON

9200 SERIES GAS FURNACES  
[napoleonheatingandcooling.com](http://napoleonheatingandcooling.com)

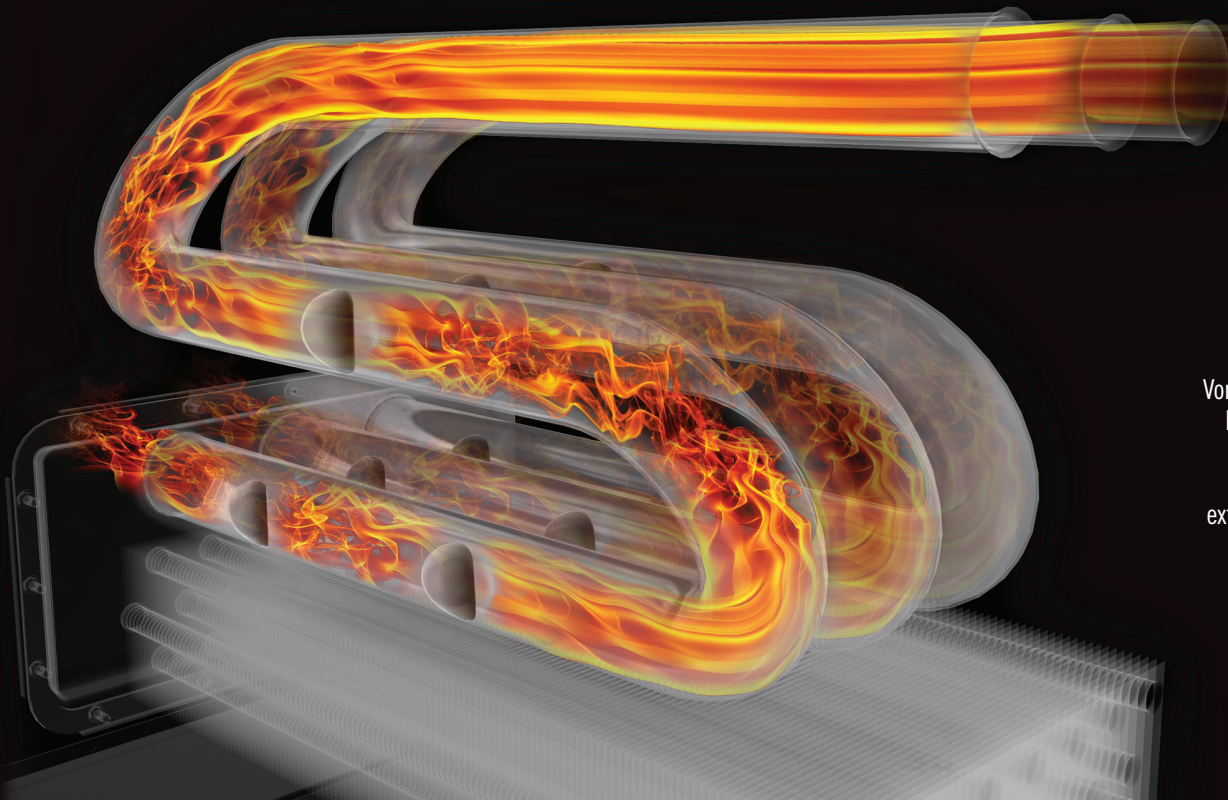


# THINK DIFFERENT. THINK NAPOLEON.

Napoleon's 9200 Series gas furnace is one of the smallest on the market. With today's households striving to achieve the highest energy savings, the 9200 Series is the perfect fit. Offering a variety of sizes that feature an EnerSave motor, it's easy to pair one to your home.

Napoleon's 9200 Series' boasts WHISPER QUIET operation, superior engineering and a sleek design. You'll enjoy the comforts of the 9200 Series gas furnace as it provides reliable, safe and efficient heat all winter long.

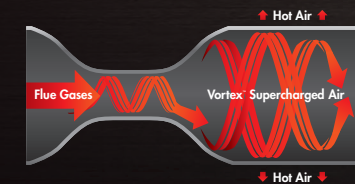
**That's Napoleon.**



**Conventional Heat Exchanger**  
Hot air radiating 700°



**Patented Vortex™ Technology Heat Exchanger**  
Hot air radiating 800°



Vortex™ turbulator inside the heat exchanger increases efficiency by disrupting the natural airflow which extracts the maximum heat from the flue gases.



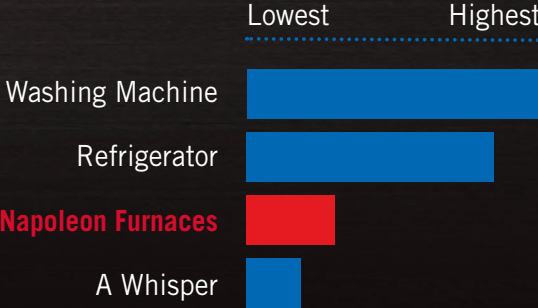
# 9200 SERIES GAS FURNACES

## WHISPER QUIET™ OPERATION FEATURES

Designed to be 'Whisper Quiet™', one of the smallest 92% + AFUE furnaces on the market.



### Common Sounds in a Home



## FUTURE READY

WIFI CAPABLE



Napoleon's 9200 Series is compatible with smart thermostat technology. Easily paired with a wide variety of thermostats and control boards, the 9200 is compatible with your home.



PROUDLY ENGINEERED AND MADE IN CANADA  
FOR NORTH AMERICAN WINTERS

## ENERGY SAVINGS & COMFORT

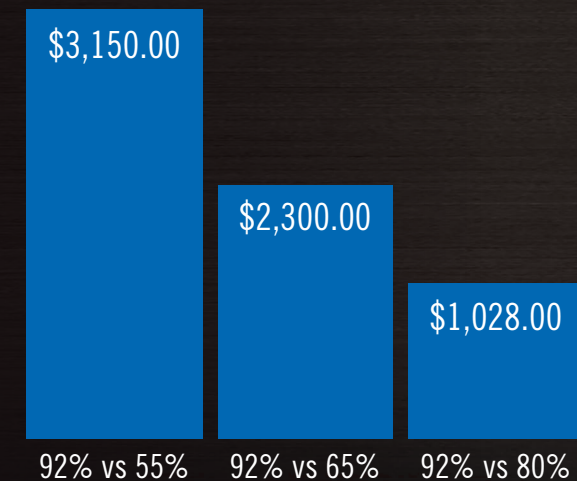
### ANNUAL FUEL UTILIZATION EFFICIENCY (AFUE)

AFUE works much like the miles-per-gallon rating on a car - the higher the rating, the lower the fuel costs. The Annual Fuel Utilization Efficiency (AFUE) measures the amount of comfort for every dollar spent. If a furnace is 25 years old or more, it could have a rating as low as 55% to 65% AFUE, compared to a new Napoleon 9200 Series' 92% AFUE.



**92% + AFUE TRANSLATES INTO  
SIGNIFICANTLY LOWER FUEL BILLS**

### Cost Comparison of Operating Your Furnace Over Five Years



## EFFICIENT TECHNOLOGY

### MOTOR OPTIONS FOR YOUR HOME

Napoleon's 9200 Series NBM models feature an efficient EnerSave motor. All Napoleon EnerSave motors achieve prompt start up with a dynamically balanced blower for quiet operation.

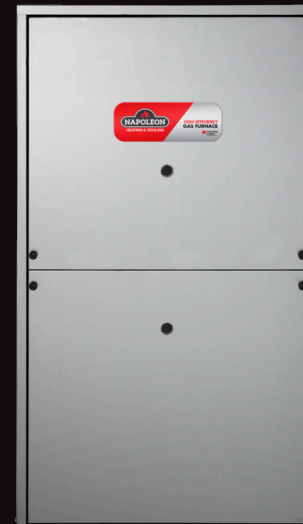


## INSTALLATION OPTIONS

### FLEXFIT FOR CONVENIENCE

Napoleon's 9200 Series offers zero clearance in all positions, providing installation ease in closets and alcoves with no additional kits required. Manufactured for natural gas, with the option of simple conversion to propane. Napoleon's 9200 Series is certified to 4500 feet in Canada with no modification and one of the smallest 92.1% AFUE furnaces on the market.

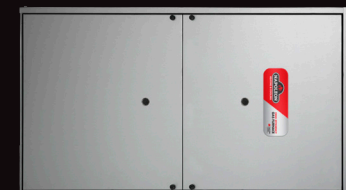
*flexfit*



Upflow



Horizontal left



Horizontal right



## OUR DIFFERENCE IS IN THE DETAILS

# 4 WAYS TO COUNT ON THE BEST

**20** YEAR HEAT EXCHANGER LIMITED WARRANTY

**10** YEAR PARTS LIMITED WARRANTY

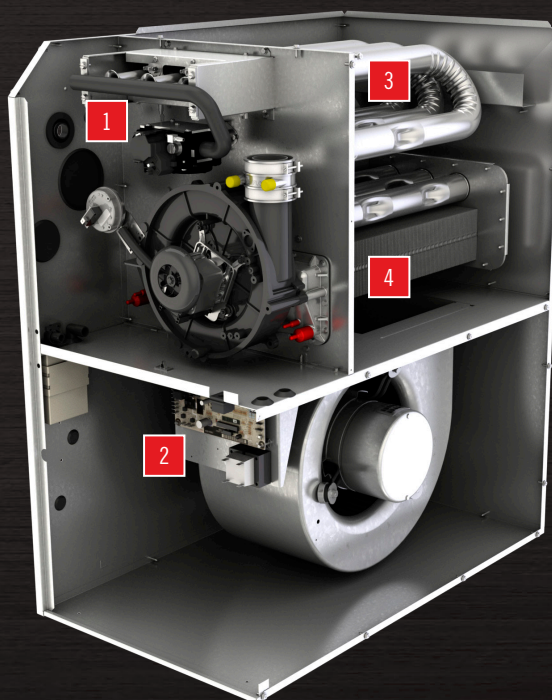
\*See warranty for details

### 1 Aluminized Multi-Port in Shot Burners

- Corrosion resistant burners
- Perfectly shapes the flame cone for maximum flame efficiency

### 2 Self Diagnostic Integrated Furnace Control (IFC)

- Contains LED service indicator lights to ensure quick and accurate service diagnosis
- Constantly monitors all safety devices
- Interfaces with additional home comfort products using simple plug-in connections
- Mounted between the blower rails for easy accessibility
- Integrated Furnace Control board manages all operational functions and accommodates hook-ups for a humidifier, HRV, and electronic air cleaner



### 3 Corrosion Resistant Heavy Gauge Aluminized-Steel Tubular Triple-Pass Heat Exchanger

- Controlled wrinkle-bend design of heat exchanger creates tubes with consistent thickness
- Highly-efficient triple-pass tubular design has a large surface area to maximize heat transfer
- Each row of tubes is offset to increase turbulence in the airflow and maximize heat transfer

### 4 Stainless Steel Heat Recovery Coil

- Extracts the remaining heat from the flue gases once they exit the triple-pass heat exchanger
- Increases efficiency by evenly distributing the remaining heat to the coil's large fins
- Heat Exchanger is backed by President's Limited Lifetime and Limited Replacement Guarantee

## MODEL COMPARISON

### COMPARISON CHART

SERIES	Efficiency (AFUE)	Single Stage	Two-Stage	SureView Window	PSC Motor	Endura Pro ECM Motor	EON ECM Motor	Primary Stainless Steel Heat Exchanger	Secondary Stainless Steel Heat Exchanger	LED Cabinet Lights	Built-in UV Light Air Purifier	Four-Sided Insulated Cabinet	Made In Canada
9700	97%		•	•			•	•	•	•	•	•	•
9600	96%		•	•		•	•		•				•
9500	95%	•			•	•			•				•
9200	92.10%	•			•	•			•				•

## 9200 SPECIFICATIONS

HEATING CAPACITIES	NBM040S3A	NBM060S2A	NBM060S3A	NBM080S3A
Efficiency (AFUE)	92.1%	92.1%	92.1%	92.1%
Input BTU/hr 0-4500'	40,000	60,000	60,000	80,000
Output BTU/hr 0-4500'	37,000	55,000	55,000	74,000
CABINET DIMENSIONS (IN)	NBM040S3A	NBM060S2A	NBM060S3A	NBM080S3A
Width (in)	17 1/2	14 1/2	17 1/2	17 1/2
Depth (in)	29 1/2	29 1/2	29 1/2	29 1/2
Height (in)	32 7/8	32 7/8	32 7/8	32 7/8
VENTING *	NBM040S3A	NBM060S2A	NBM060S3A	NBM080S3A
Clearances to Combustibles	0	0	0	0
Minimum Vent Size (in)	1 1/2	1 1/2	1 1/2	2
Maximum Vent Size (in)	3	3	3	3
Minimum Vent Length (ft)	15	15	15	15
Maximum Vent Length (ft)	100	125	125	125
AIRFLOW AND COOLING	NBM040S3A	NBM060S2A	NBM060S3A	NBM080S3A
Motor Type and Size PSC	1/3 hp	1/3 hp	1/2 hp	1/2 hp
Motor Type and Size ECM	-	-	-	-
AC Tonnages	2, 3	1 1/2, 2	2, 3	2, 3

\*See table 4 in manual for all venting configurations

EnerSave Pro motor = Fixed Multi-Speed DC motor

EnerSave motor = PSC motor

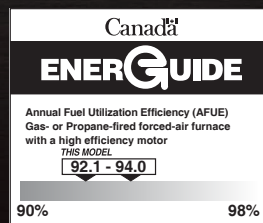
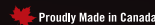


# NAPOLEON - CELEBRATING OVER 40 YEARS OF HOME COMFORT PRODUCTS



24 Napoleon Road, Barrie, Ontario, Canada L4M 0G8  
103 Miller Drive, Crittenden, Kentucky, USA 41030  
7200 Trans Canada Highway, Montreal, Quebec, Canada H4T 1A3

Tel: 1-866-820-8686 Fax: 705-725-1150  
napoleonheatingandcooling.com



Authorized Dealer

All specifications and designs can change without notice to allow for on-going product improvement. Images may not be exactly as shown. Consult your owners manual for current information. Check all local and national building codes and gas regulations. Napoleon is a registered trademark of Wolf Steel Ltd. © Wolf Steel Ltd.