



## OUTDOOR GRILL



BGC30-BQ-L DCS US

PRODUCT CODE: 71453-A

PARTS MANUAL

US CA

Brand: DCS by Fisher & Paykel

Voltage: 9V Battery

Model: BGC30-BQ-L DCS US CA

Product Code: 71453-A

## Model

- The model covered by this manual is listed on the front cover.
- The information detailed in this manual is subject to change without notice. The latest version is indicated by the reprint date and replaces any earlier editions.

## Kit Parts

Kit components are shown in *italics*. Where a part number is shown against the descriptions for these kit components, they are also available as separate items. In addition, some parts may be supplied with these kits that are not available as separate items, and are therefore either not listed, or a part number is not shown against the part description in this manual.

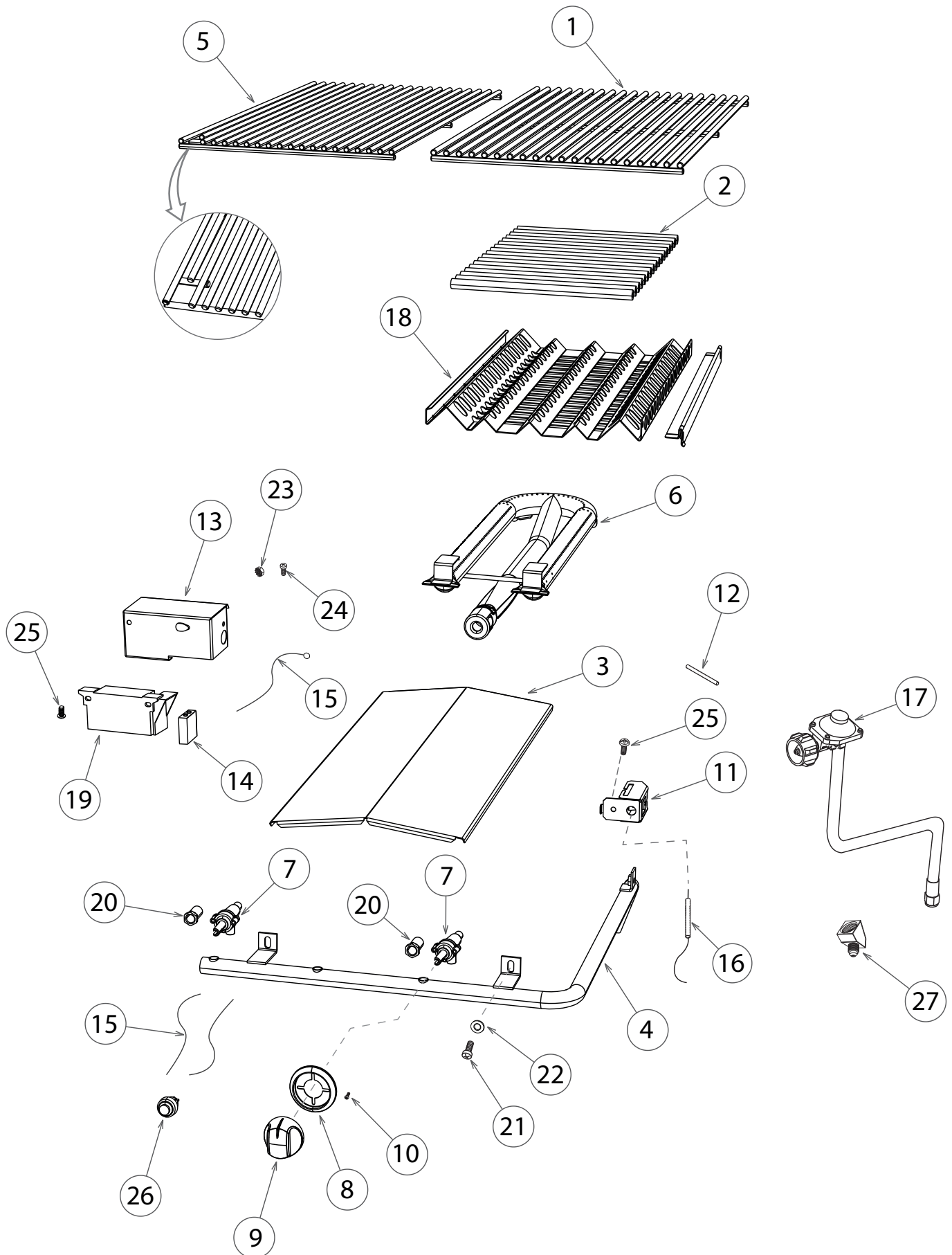
## Parts List Key

<i>italics</i>	Kit components or parts included are shown in italics. Refer to above notes: Kit Parts.
NS	As a part reference, indicates the part is not serviceable.
NI	As a part reference, indicates the part is not illustrated on the diagram.
NOT USED	As a part number, indicates the diagram part reference is not used in this manual.

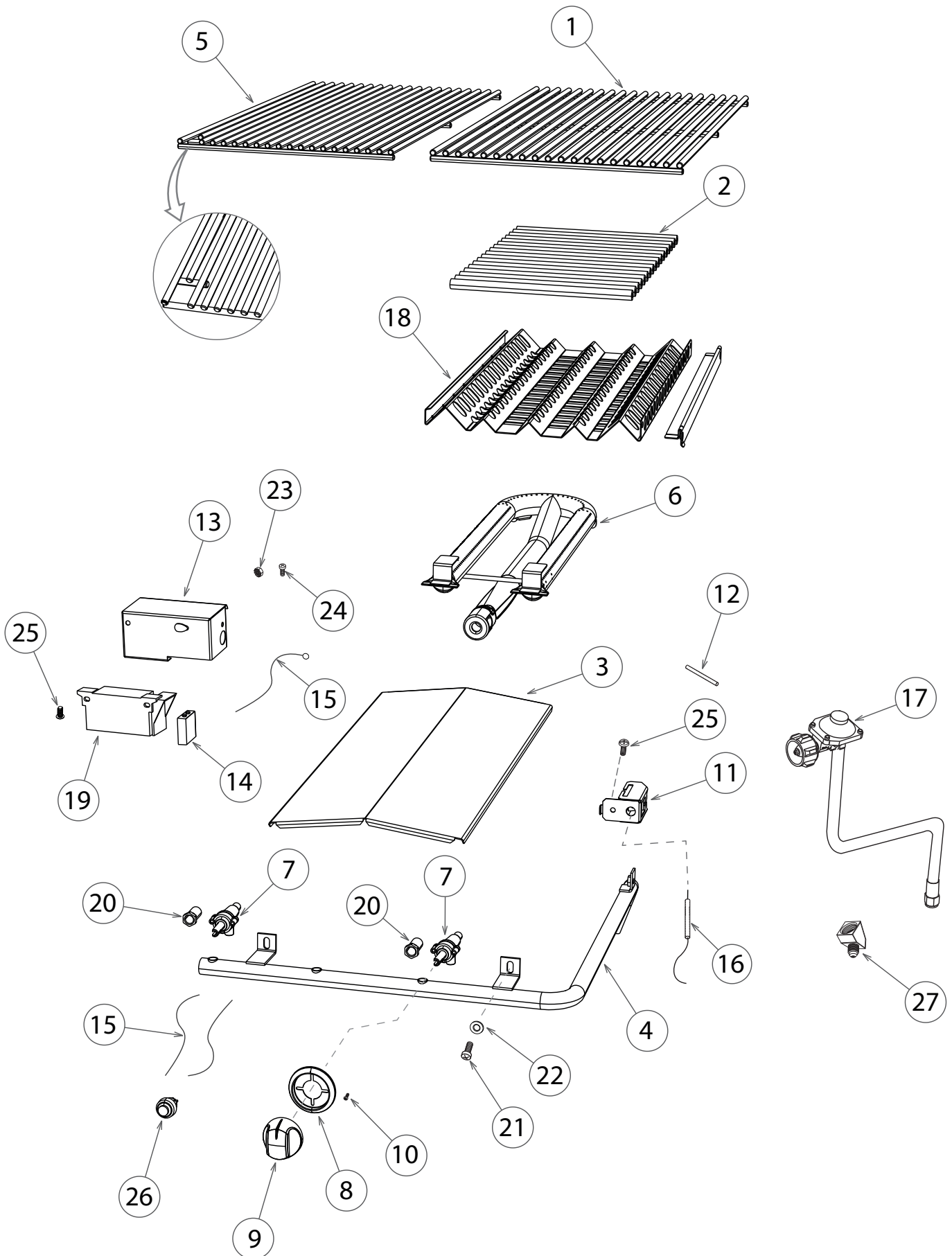
GRILL BURNER COMPONENTS	3
GRILL BODY COMPONENTS	7

Fisher & Paykel Appliances Inc.  
DCS Customer Care  
695 Town Center Drive, Suite 180  
Costa Mesa.  
CA 92626-1902  
USA

Customer Care: 1-888-936-7872  
Fax: (714) 372-7003  
email: [customer.care@fisherpaykel.com](mailto:customer.care@fisherpaykel.com)  
[www.dcsappliances.com](http://www.dcsappliances.com)



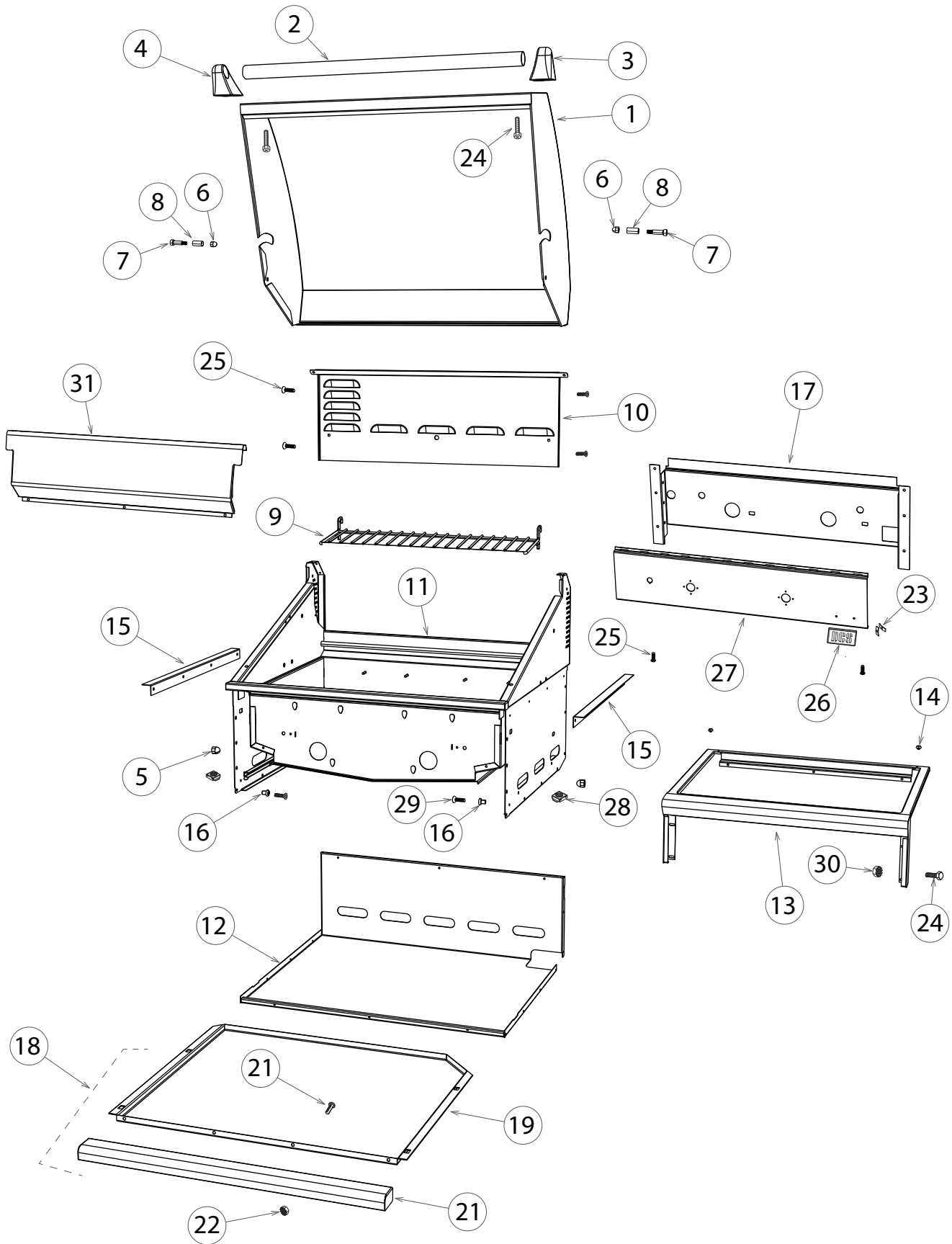
REF.	PART NUMBER	PART DESCRIPTION
1	212925	GRILL RACK 01 BGB30
2	245398	CERAMIC ROD 9.50 (PKT10)
3	214569	HEAT SHIELD FIRE BOX
4	237800	MANIFOLD PIPE SS BGB30-BQR
5	212926	GRILL RACK 02 BGB30
6	210617	TUBE BURNER BBQ 30
7	250073	GAS VALVE SMOKER ASSY
8	241461	BEZEL VALVE 305
9	240431	KNOB OUTDOOR SATIN
10	211248P	SMS 6-32X 3/8 PH PN TY F SS
11	214293	MOUNTING BRACKET ELECTRODE
12	211593	FIBER GLASS SLEEVE 1/2 (ORDER BY THE FOOT)
13	250851	HOUSING IGNITION MODULE W/A
14	212337	BATTERY ALKALINE 9V
15	250863	BGC30 - BQ IGNITION SW LOOM
	<i>Includes</i>	<i>BGC EARTH WIRE WITH TERMINALS</i>
	<i>Includes</i>	<i>WIRE BUTTON IGNITION 7.0 INCH</i>
16	250870	BGC30 - BQ IGNITER KIT
	<i>Includes 250199P</i>	<i>BURNER ELECTRODE 370</i>
	<i>Includes 250200P</i>	<i>BURNER ELECTRODE 660</i>
17	210819P	90 DEG/HOSE ASSY QCC-1 (PKD)
18	214421	RADIANT ASSY BGB30
	<i>Includes 214419</i>	<i>HOUSING RADIANT BGB30</i>
	<i>Includes 214420</i>	<i>LOCK RADIANT BGB30</i>
19	212333	BATTERY IGN MODULE 9V ELTEC 4
20	210689	JET SPUD 1.51MM (53DMS)
21	211323P	HB 1/4-20 X 1/2 X FULL SS
22	211368P	WSHR FLT 313 X 750 SS
23	211480	NUT KEPS 8-32 SS
24	211295	MS 8-32 X 1/2 PH TR HD SS
25	211242P	MS 10-24X1/2 PHPN TY F SS 10PK
26	212336	SWITCH IGNITER SNAP ON
27	239586	ELBOW 45,3/8 M FLAREX 1/2F NPT



REF.	PART NUMBER	PART DESCRIPTION
<b>NI</b>	<b>217732</b>	<b>KIT CONV LP TO NAT BGB30</b>
	<i>Including 210677</i>	<i>JET SPUD 2.44MM (41DMS) x 2</i>
	<i>Including 210686</i>	<i>JET SPUD 1.78MM (50DMS) x 1</i>
	<i>Including 210765</i>	<i>REGULATOR - 4.0 WC x 1</i>
	<i>Including 211360</i>	<i>NUT HEX 3/8-27 ZINC x 2</i>
	<i>Including</i>	<i>LABEL NAT. GAS x 1</i>
	<i>Including</i>	<i>INSTR CONV KIT LP/NAT BGB30 x 1</i>
	<i>Including 212123</i>	<i>1/2 NPT X CLOSE NIPPLE BLK x 1</i>
	<i>Including 212138</i>	<i>COUPLING 1/2 NPT BLACK x 1</i>



7 GRILL BODY COMPONENTS





REF.	PART NUMBER	PART DESCRIPTION
1	250787	LID WA BGC30 BQR
2	251125	GRILL HANDLE LID 30
3	212342	END CAP LID HANDLE R/H
4	212343	END CAP LID HANDLE L/H
5	218150	NUT KEPS 10-24 SS (10PK)
6	211387	ACORN NUT 5/16 -18 DEFLECTED
7	211437	BLT SHLDR SS 5/16-18 X 1
8	213907	SPACER LID 36/48 BQ
9	212927	WARMING RACK BGB30
10	224780	SERVICE PANEL BGB30
11	214423	FIRE BOX W/A BGB30
12	224776	BOTTOM BURNER BOX BGB30
13	250842	LANDING LEDGE W/A BGC30
14	212359	RUBBER BUMPER
15	224769	ANGLE GRILL SUPPORT
16	211090P	RACK ROLLER VERTICAL (PKD)
17	250783	FRONT BAFFLE BGC30
18	224758	DRIP PAN ASSY BGB30
	<i>Includes 214412</i>	<i>DRIP PAN BGB30 BQR</i>
	<i>Includes 214411</i>	<i>HANDLE DRIP PAN BGB30 BQAR PTD</i>
19	214412	DRIP PAN BGB30
20	214411	HANDLE DRIP PAN BGB30 BQAR PTD
21	211278	MS 10-24X3/8 PH TRU SS
NI	211375	WASHER FLT SS .25 X .938 X .05
22	211359	NUT HEX 10-24SS LOCK NYLON
23	211419P	LOGO - CLIP (2 PACK)
24	211323P	HEX 1/4-20 X 1/2 FUL TH SS (10PK)
25	211242P	MS 10-24 X 1/2 PH TR TY F SS (10PK)
26	254583	BADGE DCS 89 X 49 W/ PIN
27	254676P	VALVE PNL BGC30 BQ PTD B SP
28	211408P	NUT W/RET 1/4-20 BLK (10PK)
29	250184	MS 10-24 X 1 PH FLT 100 316SS
30	211398P	NUT KEPS 1/4-20 SS (10PK)
31	250784	WRAPPER WARMING RACK BGC30 BQ
NI	591111	BKSET BGC/BH1-30 GRILLS DCS US
	<i>Includes</i>	<i>BK USR/INSTL BGC 30 DCS USCA</i>
	<i>Includes</i>	<i>BK SRVCE/W'NTY OUTDR DCS USCA</i>

## **FISHERPAYKEL.COM**

© Fisher & Paykel Appliances Ltd 2020. All rights reserved.

The product specifications in this document apply to the specific products and models described at the date of issue. Under our policy of continuous product improvement, these specifications may change at any time. You should therefore check with your Dealer to ensure this document correctly describes the product currently available.

For current details about model and specification availability in your country, go to our website [fisherpaykel.com](https://fisherpaykel.com) or contact your local Fisher & Paykel dealer

**PRODUCT CODE: 71453-A 12.20**