

This Owner's Manual is provided and hosted by [Appliance Factory Parts](http://www.appliancefactoryparts.com).



FRIGIDAIRE EC400WF Owner's Manual

[Shop genuine replacement parts for FRIGIDAIRE
EC400WF](#)



[Find Your FRIGIDAIRE Evaporative Cooler Parts - Select From 4 Models](#)

----- Manual continues below -----

FRIGIDAIRE

**450 SQ. FT.
EVAPORATIVE
COOLER AND FAN
EC400WF
Owner's Manual**



Intertek
Manual v1.2

READ AND SAVE THESE INSTRUCTIONS.

TABLE OF CONTENTS

Register Your Product Online.....	3
Important Safety Instructions and Warnings.....	4
Operating Instructions.....	6
Cleaning and Maintenance.....	9
Limited Manufacturer's Warranty	10

SPECIFICATIONS

MODEL NO	EC400WF
RATED VOLTAGE	120V
RATED FREQUENCY	60 Hz
RATED POWER	200W
NOISE	61-73 dB
AIRFLOW	500 CFM
COVERAGE	450 square feet
WATER TANK SIZE	52 Quarts
DIMENSIONS	15.25"D x 17.80"W x 42.25"H (w/wheels)

Frigidaire is a registered trademark of Electrolux Home Products, Inc.
All rights reserved.

Manufactured under license by:
NewAir, LLC
6600 Katella Ave, Cypress, CA 90630
Comments/questions:
support@newair.com | 855-963-9247

REGISTER YOUR PRODUCT ONLINE

Register Your Frigidaire Product Online Today!

Take advantage of all the benefits product registration has to offer:



Service and Support

Diagnose troubleshooting and service issues faster and more accurately



Recall Notifications

Stay up-to-date on safety notices, system updates, and recall notifications



Special Promotions

Opt-in for NewAir promotions and offers

Registering your product information online is safe & secure and takes less than 2 minutes to complete:

newair.com/register

Alternatively, we recommend you attach a copy of your sales receipt below and record the following information, which can be found on the manufacturer's nameplate on the back of the unit. You will need this information if it becomes necessary to contact the manufacturer for service inquiries.

Date of Purchase: _____

Serial Number: _____

Model Number: _____

IMPORTANT SAFETY INSTRUCTIONS AND WARNINGS

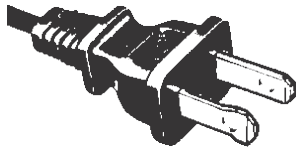
1. Do not leave the cooler running unattended for long periods of time.
2. Keep this unit out of reach from children or those without the capacity to operate the unit safely. This appliance is not intended for use by persons (including children) with reduced physical, sensory or mental capabilities, or lack of experience and knowledge, unless they have been given supervision or instruction concerning use of the appliance by a person responsible for their safety. Young children should be supervised to ensure that the appliance is being used safely.
3. This appliance has a polarized plug. As a safety feature to reduce the risk of electrical shock, this plug is intended to fit in a polarized outlet only one way. If the plug does not fit fully in the outlet, reverse the plug. If it still does not fit, contact customer service or a qualified electrician for assistance. Do not attempt to modify the plug in any way. Do not use an outlet if the plug fits loosely, or if the outlet itself feels hot to the touch.
4. If the power cord is damaged, contact customer service immediately. Do not use a unit with a damaged power cord.
5. **WARNING:** To reduce the risk of fire or electric shock, do not use this unit with any solid-state speed control device. Only use the appliance plugged into a standard, compatible wall outlet.

RULES FOR SAFE OPERATION

1. Be careful not to insert anything through the front grille of the cooler, especially while the fan is running.
2. Be sure the cooler is placed on a stable surface when operating to avoid accidentally tipping it over.
3. Remember that this unit is meant for household use only.

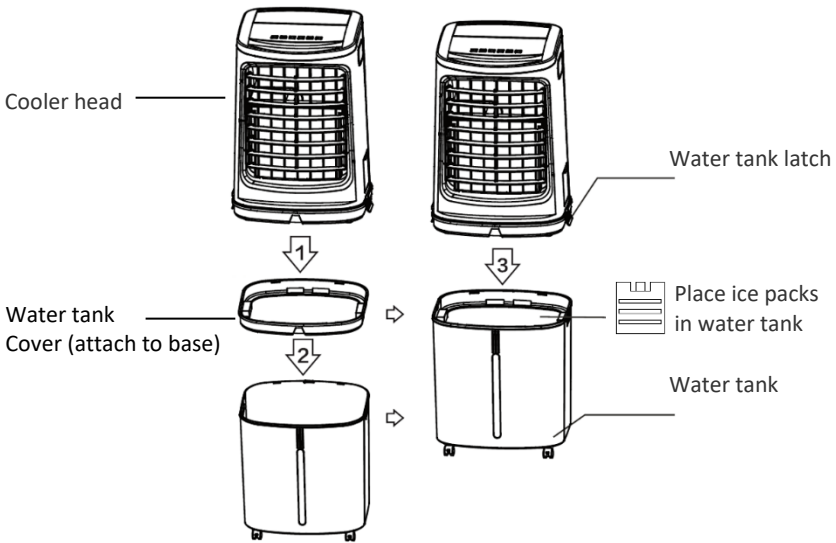
WARNING: This appliance has a polarized plug (one blade is wider than the other). To reduce the risk of electric shock, this plug is intended to fit into a polarized outlet only one way. If the plug does not fit fully into the outlet, reverse the plug. If it still does not fit, contact a qualified electrician. Do not attempt to modify the plug in any way.

POLARIZED PLUG

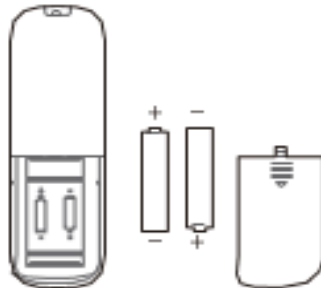


OPERATING INSTRUCTIONS

WATER TANK INSTALLATION



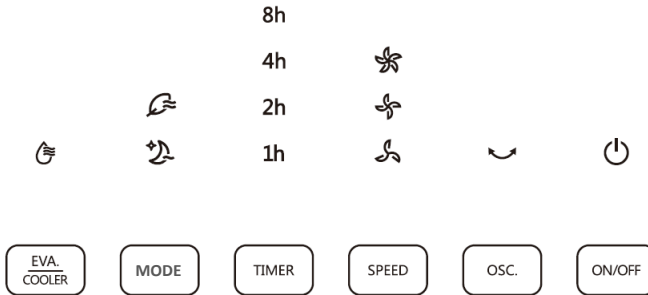
REMOTE CONTROL SETUP



Instructions for use

1. Insert 2 AAA batteries as shown in the diagram above (not included).
2. Keep in mind that the remote only works within 16 feet and 30 degrees of range from the front of the unit.

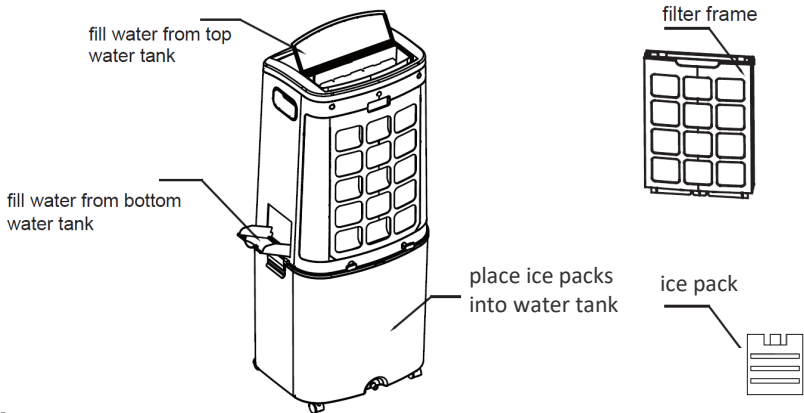
CONTROL PANEL OPERATION



- EVA. / COOLER:** Press this button to activate or disable evaporative cooling. While evaporative cooling is active, the pump will pull water from the tank and run it through the cooling pad, increasing the cooling power of the unit. If disabled, the unit will simply operate as a tower fan. If the water drop icon is illuminated constantly, then evaporative cooling is operating normally. If the icon is flashing, then the water tank needs to be refilled. **Note: Do not run evaporative cooling mode if the water tank is empty. If you do, the water pump may be damaged.**
- MODE:** Press this button to cycle between operation modes. When the leaf icon is illuminated, the unit is in nature mode, which will cause the unit to simulate a shifting natural breeze. When the moon icon is illuminated, the unit is in sleep mode, which will cause the unit to gradually decrease fan speed over time. If no icons are illuminated above the mode button, then the unit is operating in normal mode.
- TIMER:** Press this button to enable an automatic shutoff after a specific amount of time. Select between 1 and 12 hours by pressing the button until the correct quantity of hours is illuminated in the time icons above the timer button. **Note: If you set the timer while the unit is off, the unit will turn on (at the chosen fan speed) after that time has elapsed.**
- SPEED:** Press this button to change the speed of the fan between the three options.
- OSC.:** Press this button to enable the oscillation feature. When enabled, the louvers on the front vent of the fan will move back and forth, increasing the coverage of the fan.

WATER TANK SETUP

You can fill the water tank from the side of the unit (through the small drawer opening) or directly into the water tank by undoing the latches and removing the fan head from the water tank base. Water can be filled at the very top of the unit, but please note that this water drains down the cooling pad, rather than directly into the water tank. It is advised not to use the top to fill the tank.



Tips:

- Try to keep the water level between the MIN and MAX lines in the water tank (seen on the front of the water tank) in order to prevent water pump damage or tank overflow.
- If the water falls below the MIN line, your unit may beep for a short time as a warning. Add some water to the tank until the level is above the MIN line, in order to avoid damage to the water pump.
- Use the included ice packs to improve the cooling power. *(Do not break open or modify ice packs in any way—ice packs already contain a freezing gel and do not need to be opened. Place ice packs in the freezer overnight prior to use, for maximum cooling effect. Frozen ice packs should be placed directly into the water tank, away from the pump.)*

CLEANING AND MAINTENANCE

1. Be sure to unplug the unit before doing any cleaning.
2. All plastic parts can be cleaned with mild soap and a damp cloth or sponge. Thoroughly clean any soap residue before using the unit again.
3. Be sure not to allow any water or other liquid to get inside the fan head.

LIMITED MANUFACTURER'S WARRANTY

This appliance is covered by a limited manufacturer's warranty. For one year from the original date of purchase, the manufacturer will repair or replace any parts of this appliance that prove to be defective in materials and workmanship, provided the appliance has been used under normal operating conditions as intended by the manufacturer.

Warranty Terms:

During the first year, any components of this appliance found to be defective due to materials or workmanship will be repaired or replaced, at the manufacturer's discretion, at no charge to the original purchaser. The purchaser will be responsible for any removal or transportation costs.

Warranty Exclusions:

The warranty will not apply if damage is caused by any of the following:

- Power failure
- Damage in transit or when moving the appliance
- Improper power supply such as low voltage, defective household wiring or inadequate fuses
- Accident, alteration, misuse or abuse of the appliance such as using non-approved accessories, inadequate air circulation in the room or abnormal operating conditions (extreme temperatures)
- Use in commercial or industrial applications
- Fire, water damage, theft, war, riot, hostility or acts of God such as hurricanes, floods, etc.
- Use of force or damage caused by external influences
- Removal of stickers and/or screws
- Partially or completely dismantled appliances

Obtaining Service:

When making a warranty claim, please have the original bill of purchase with purchase date available. The purchaser will be responsible for any removal or transportation costs.

Replacement parts and/or units will be new, remanufactured or refurbished and are subject to the manufacturer's discretion.

For technical support and warranty service, please email support@newair.com

Frigidaire is a registered trademark of Electrolux Home Products, Inc.
All rights reserved.

Manufactured under license by:
NewAir, LLC
6600 Katella Ave, Cypress, CA 90630