

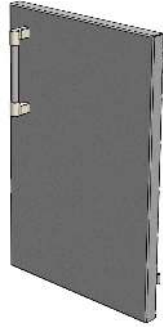
XE-30C PARTS LIST



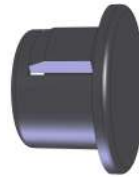
DOOR HANDLE
290-0401



LEFT DOOR
510-0709



RIGHT DOOR
510-0693



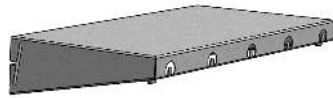
HOLE PLUG
200-0041



XE-30C CART
500-0179



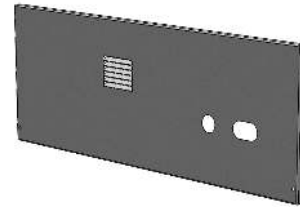
SIDE TABLE
WITHOUT UTENCIL
HOLDER 510-0713



SIDE TABLE WITH
UTENCIL HOLDER
510-0712



MAGNETIC CATCH
290-0283



BACK TOP
PANEL (REAR
VIEW) 510-0707



GAS TANK
SLIDEOUT BASE
510-0624



BALL SLIDES
290-0282



GROMMET
200-0327



STRAIN RELIEF
210-0269



HAND KNOB
290-0441



HEX NUT
200-0090



THREADED ROD
200-0366



3 IN CASTER WITH LOCK
290-0080



3 IN CASTER WITHOUT
LOCK 290-0079



HANDLE
290-0135



SIDE TABLE
BRACKET LEFT
100-2253



SIDE TABLE
BRACKET RIGHT
100-2254

**XE-30C
PARTS LIST**



SCREW
200-0326



SCREW
200-0262



FLAT WASHER
200-0400



SCREW
200-0242



LOCKWASHER
200-0087



FLAT WASHER
200-0088



SCREW
200-0268



BUMPER
290-0078



BUMPER
290-0078

USAGE FOR ABOVE ITEMS:

SCREW 200-0326 IS USED TO ATTACH SIDE TABLE MOUNTING BRACKETS.

SCREW 200-0262, ALONG WITH WASHER 200-0400, IS USED TO ATTACH DOOR HANDLES.

SCREW 200-0242, ALONG WITH LOCKWASHER 200-0087 AND FLAT WASHER 200-0088 IS USED TO ATTACH CASTERS TO THE CART.

SCREW 200-0268 IS USED TO ATTACH SLIDES TO GAS TANK BASE.

BUMPER 290-0078 IS USED ON THE INSIDE OF THE CART DOORS.

BUMPER 290-0078 IS USED UNDER THE CART SIDE TABLES.