

This Owner's Manual is provided and hosted by [Appliance Factory Parts](#).



Alfresco ALX230SZ Owner's Manual

[Shop genuine replacement parts for Alfresco
ALX230SZ](#)



[Find Your Alfresco Grill Parts - Select From 126 Models](#)

----- Manual continues below -----

Alfresco™

Open Air Culinary Systems

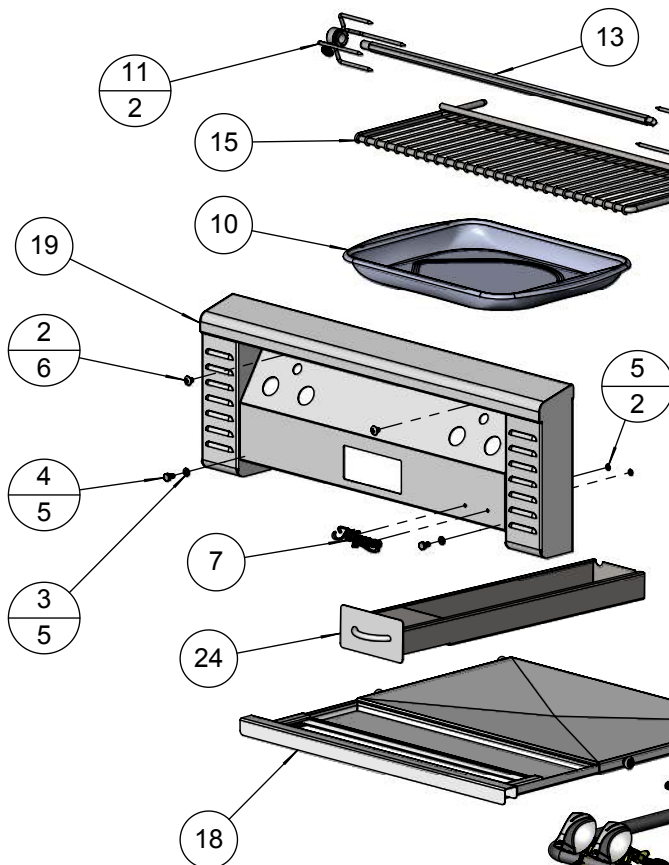
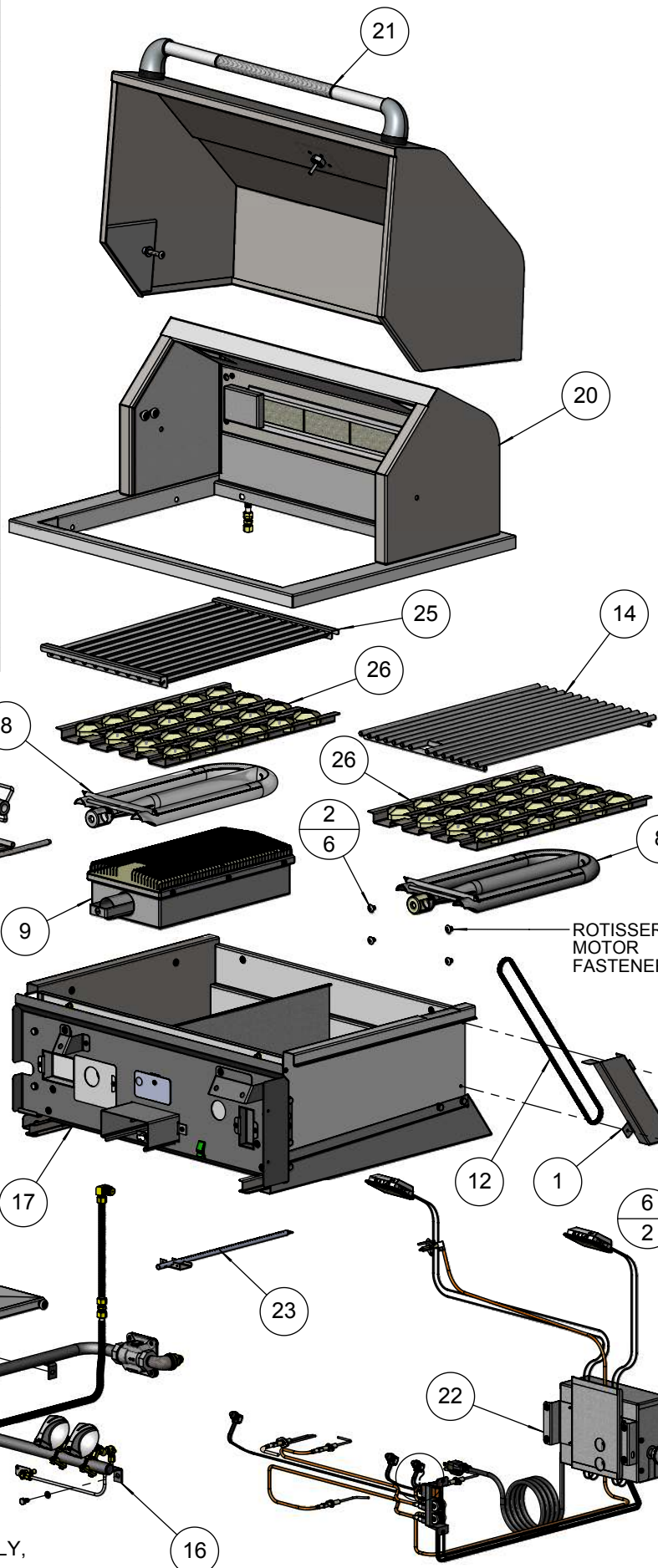


ALX2-30 / 30SZ Parts Manual

For models S/N: 11-00000 forward.

BILL OF MATERIAL

| NO. | PART # | DESCRIPTION | QTY |
|-----|----------|---|-----|
| 1 | 100-1877 | ALX2 - ROTISSERIE CHAIN COVER | 1 |
| 2 | 200-0086 | 1/4-20 X 3/8 - TRUSS HEAD - PHILIPS SCREW | 6 |
| 3 | 200-0087 | WASHER - 1/4" SPRING LOCK- REGULAR - SS | 5 |
| 4 | 200-0089 | BOLT - HEX HEAD 1/4-20 x 1/2" L | 5 |
| 5 | 200-0093 | WASHER - PUSH LOCK 1/8" ID X 3/8" OD (LOGO) | 2 |
| 6 | 200-0111 | SCREW 8-18 X 1/2 - SELF TAP - 410 SS | 2 |
| 7 | 290-0031 | LOGO - ALFRESCO | 1 |
| 8 | 290-0038 | BURNER - GRILL - "U" SHAPE | 2 |
| 9 | 290-0052 | ALFRESCO SEAR ZONE™ BURNER ASSEMBLY | 1 |
| 10 | 290-0059 | ROTISSERIE DRIP PAN | 1 |
| 11 | 290-0096 | FORK ASSEMBLY | 2 |
| 12 | 290-0116 | CHAIN - ANSI # 25 - 1/4" PITCH - .13" Ø X 1/8" ROLLER | 1 |
| 13 | 290-0123 | SPEAR - ROTISSERIE - 30" - 2006 BBQ | 1 |
| 14 | 290-0124 | GRILL 30" BBQ - 12 3/4" WIDE - SS | 1 |
| 15 | 290-0315 | ALX2-30 WARMING RACK - SS | 1 |
| 16 | 510-0465 | ALX2-30 / 30SZ - GAS MANIFOLD ASSEMBLY | 1 |
| 17 | 510-0470 | ALX2-30 / 30SZ - FIRE BOX ASSEMBLY | 1 |
| 18 | 510-0472 | ALX2-30 / 30SZ - GREASE TRAY ASSEMBLY | 1 |
| 19 | 510-0474 | ALX2-30 / 30SZ - FRONT PANEL ASSEMBLY | 1 |
| 20 | 510-0476 | ALX2-30 / 30SZ - BACK HOOD WITH RIM ASSEMBLY | 1 |
| 21 | 510-0479 | ALX2-30 / 30SZ - FRONT HOOD ASSEMBLY | 1 |
| 22 | 510-0494 | ALX2-30 / 30SZ - ELECTRICAL COMPONENTS | 1 |
| 23 | 510-0504 | ALX2 - SMOKER BURNER ASSEMBLY | 1 |
| 24 | 510-0518 | ALX2 - SMOKER TRAY ASSEMBLY | 1 |
| 25 | 510-0521 | ALX2 - SEARZONE™ GRILL ASSEMBLY | 1 |
| 26 | 510-0522 | ALX2 - BRIQUETTE TRAY ASSEMBLY | 2 |

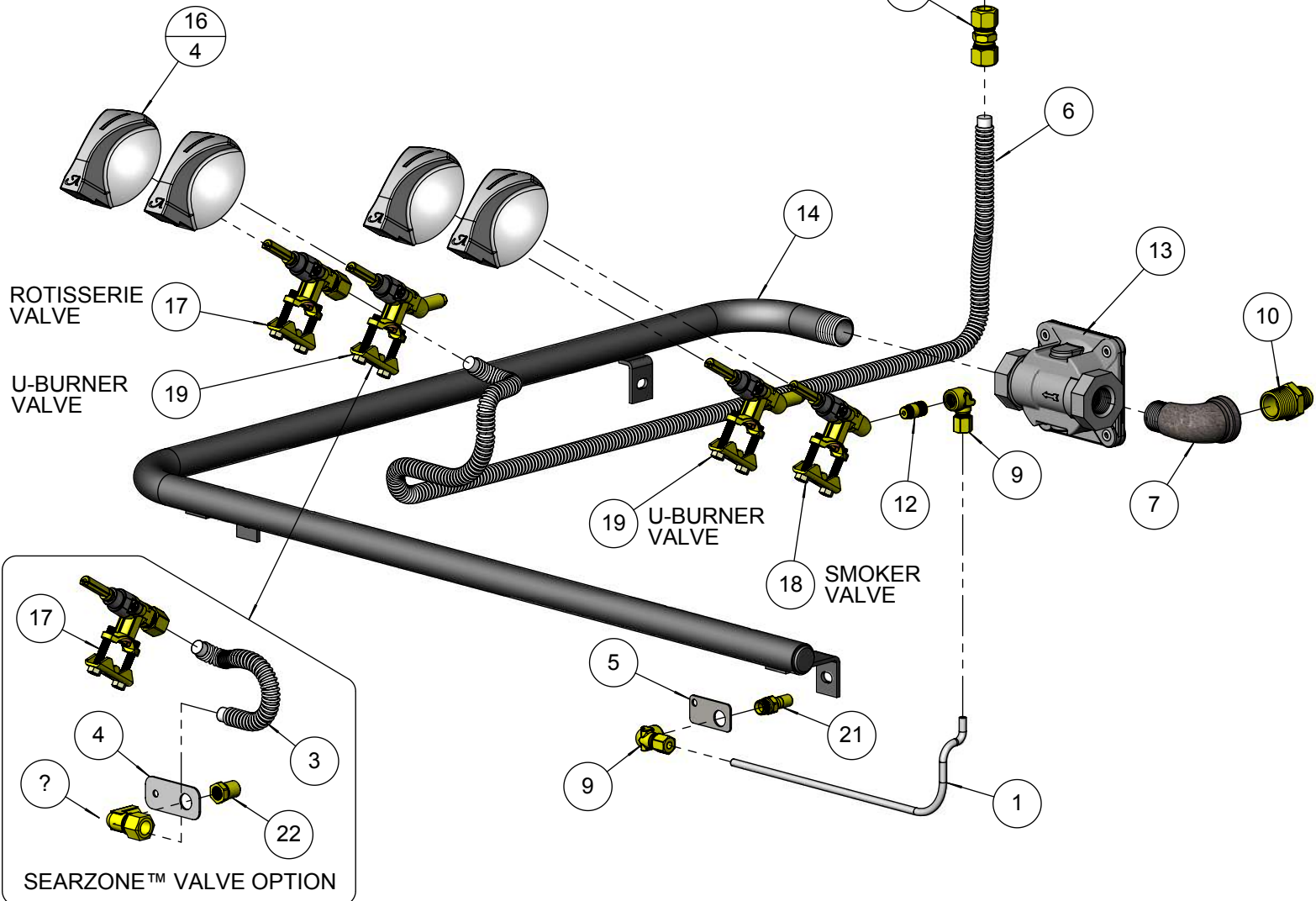


NOTE:
 LEFT SEARZONE™ BURNER (9) USED IN ALX2-30SZ MODEL ONLY,
 OTHERWISE IT IS REPLACED BY U-BURNER (8) IN ALX2-30 UNIT.

| NO. | PART # | DESCRIPTION | QTY |
|-----|----------|---|-----|
| 1 | 100-0913 | 30" & 56" BFG BBQ SMOKER GAS LINE | 1 |
| 2 | 100-0917 | ROTISSERIE GAS LINE EXTENSION - 3/8"Ø X 8" - SS | 1 |
| 3 | 100-0917 | SEAR ZONE™ GAS LINE (8"L x 3/8" Ø - SS. FLEX TUBE) | 1 |
| 4 | 100-1067 | ALX2- SMOKER & SZ™ ORIFICE BRACKET | 1 |
| 5 | 100-1851 | ALX2 - SMOKER ORIFICE BRACKET | 1 |
| 6 | 100-1949 | ROTISSERIE GAS LINE (36"L x 3/8" Ø - SS. FLEX TUBE) | 1 |
| 7 | 200-0274 | ELBOW 90° - CAST IRON - 1/2" FPT x 1/2" MPT | 1 |
| 8 | 220-0151 | COUPLING 3/8" x 3/8" - COMPRESSION - BRASS | 1 |
| 9 | 220-0273 | ELBOW 90° - 1/8" FPT x 3/16" COMP | 2 |
| 10 | 220-0275 | NIPPLE - 1/2" MPT X 3/8" OD FL | 1 |
| 11 | 220-0276 | ELBOW 3/8" MPT x 1/8" FPT x 3/8" COMP | 1 |
| 12 | 220-0277 | NIPPLE 1/8"MPT x 1/16"MPT | 1 |
| 13 | 220-0280 | REGULATOR GAS - MAXITROL RV48CL440002 | 1 |
| 14 | 220-0321 | ALX2-30 30SZ GAS MANIFOLD PIPING | 1 |
| 15 | 220-0399 | ELBOW 1/8-27 FPT x 3/8" Ø COMPRESSION | 1 |
| 16 | 290-0030 | KNOB BBQ - ALFRESCO "A" LETTER | 4 |
| 17 | 290-0041 | GAS VALVE - STRAIGHT - WITHOUT ORIFICES | 2 |
| 18 | 290-0066 | GAS VALVE - ANGLED - ORIFICE: INT= 0.95 mm / EXT=NONE | 1 |
| 19 | SEE NOTE | GAS VALVE - ANGLED WITH ORIFICE >>> SEE NOTE | 2 |
| 20 | SEE NOTE | ORIFICE - IR ROTISSERIE UNIT (SEE NOTE FOR SIZING) | 1 |
| 21 | SEE NOTE | ORIFICE - SMOKER UNIT >>> SEE NOTE | 1 |
| 22 | SEE NOTE | ORIFICE - SEAR ZONE™ >>> SEE NOTE | 1 |

NOTE: ORIFICE OR VALVE ASSEMBLY TO CHANGE ACCORDING TO FUEL SUPPLY: NATURAL GAS OR LIQUID PROPANE

| ITEM | NG GAS | LP GAS |
|------|----------|----------|
| | PART # | PART # |
| 19 | 290-0310 | 290-0311 |
| 20 | 220-0285 | 220-0286 |
| 21 | 220-0313 | 220-0314 |
| 22 | 220-0289 | 220-0290 |



BILL OF MATERIAL

| NO. | PART # | DESCRIPTION | QTY |
|-----|----------|---|-----|
| 1 | 100-1065 | SEARZONE™ OPENING FIREBOX COVER | 1 |
| 2 | 100-1831 | ALX2 - SMOKER BOX BODY | 1 |
| 3 | 100-1833 | ALX2 SMOKER BOX TOP DIFUSSER | 1 |
| 4 | 100-1846 | ALX2 - U-BURNER BRACKET | 2 |
| 5 | 100-1847 | ALX2 - SEAR-ZONE IGNITER BRACKET / SHIELD | 1 |
| 6 | 100-1848 | ALX2 - IGNITER SHIELD | 2 |
| 7 | 100-1849 | ALX2 - IGNITER HOLE COVER | 1 |
| 8 | 100-1866 | ALX2 - SEAR-ZONE BURNER SHIELD | 1 |
| 9 | 100-1884 | ALX2 - SEAR-ZONE™ BURNER BRACKET | 1 |
| 10 | 100-1887 | ALX2 - DUAL VALVE FIREWALL COVE | 1 |
| 11 | 100-1888 | ALX2 - SINGLE VALVE FIREWALL COVE | 1 |
| 12 | 100-1890 | ALX2 - FIREWALL OPENING COVER FOR SEARZONE™ | 1 |
| 13 | 100-1945 | ALX2 - DUAL VALVE FIREWALL COVER FOR U-BURNER | 1 |
| 14 | 100-1946 | ALX2 - FIREWALL OPENING COVER FOR U-BURNER | 1 |
| 15 | 200-0087 | WASHER - 1/4" SPRING LOCK- REGULAR - SS | 17 |
| 16 | 200-0089 | BOLT - HEX HEAD 1/4-20 x 1/2" L | 17 |
| 17 | 200-0111 | SCREW 8-18 X 1/2 - SELF TAP - 410 SS | 34 |
| 18 | 200-0305 | SPEED NUT TINNEMAN U-TYPE | 1 |
| 19 | 510-0471 | ALX2-30 / 30SZ FIREBOX - WELDED PARTS | 1 |
| 20 | 510-0473 | ALX2-30 / 30SZ FIREWALL ASSEMBLY | 1 |
| 21 | 510-0502 | ALX2 - GREASE TRAY SUPPORT - RIGHT SIDE | 1 |
| 22 | 510-0503 | ALX2 - GREASE TRAY SUPPORT - LEFT SIDE | 1 |
| 23 | 510-0507 | ALX2 - FRONT PANEL BRACKET ASSEMBLY - SINGLE SWITCH | 1 |
| 24 | 510-0517 | ALX2 - FRONT PANEL BRACKET ASSEMBLY - DUAL SWITCH | 1 |
| 25 | 510-0520 | ALX2 - FIREWALL SUPPORT BRACKET ASSEMBLY | 2 |

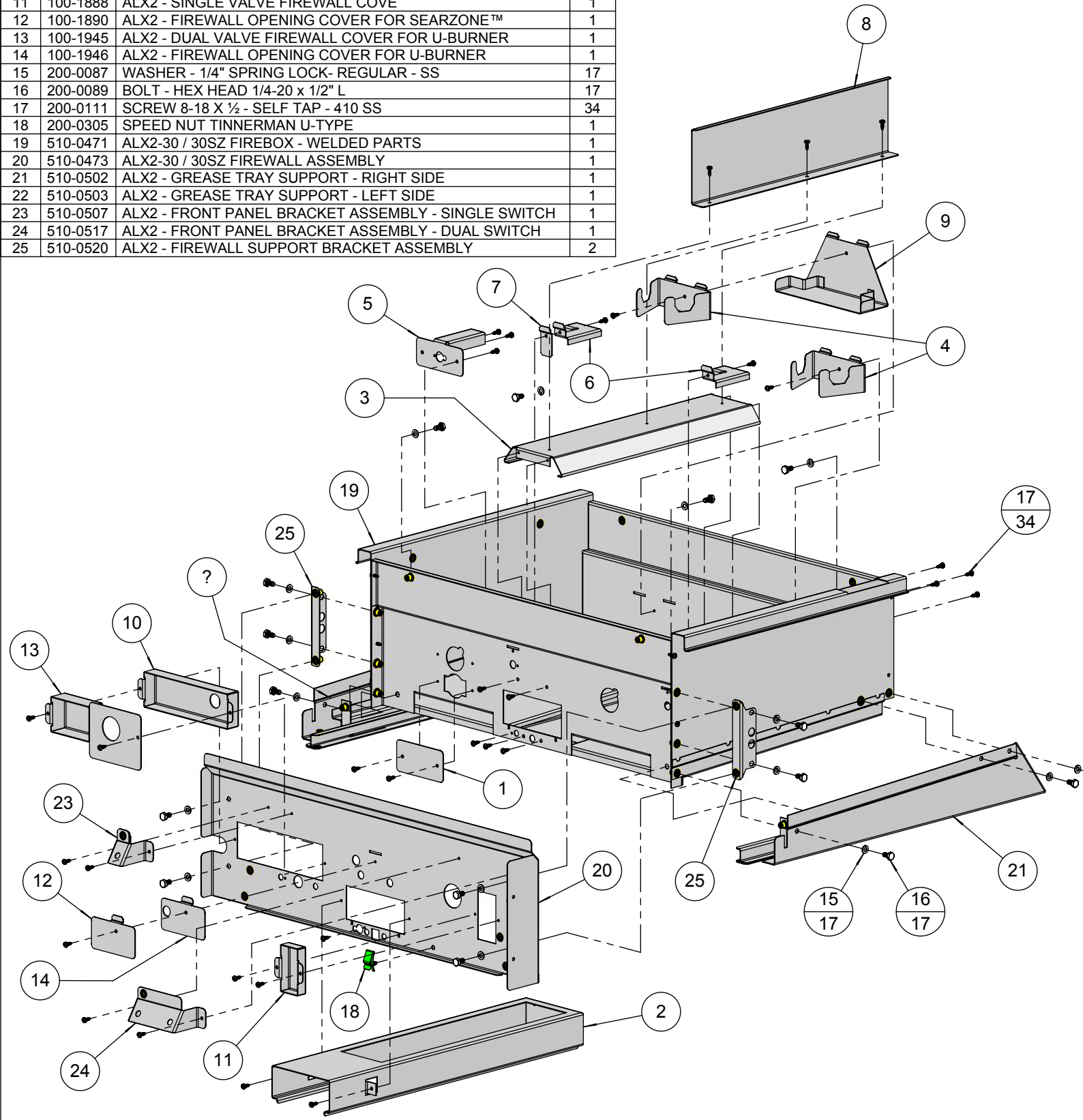
NOTES:

BRACKETS USED ON ALX2-30 MODEL:

- (1) (4) (6) (7) (13) (14)

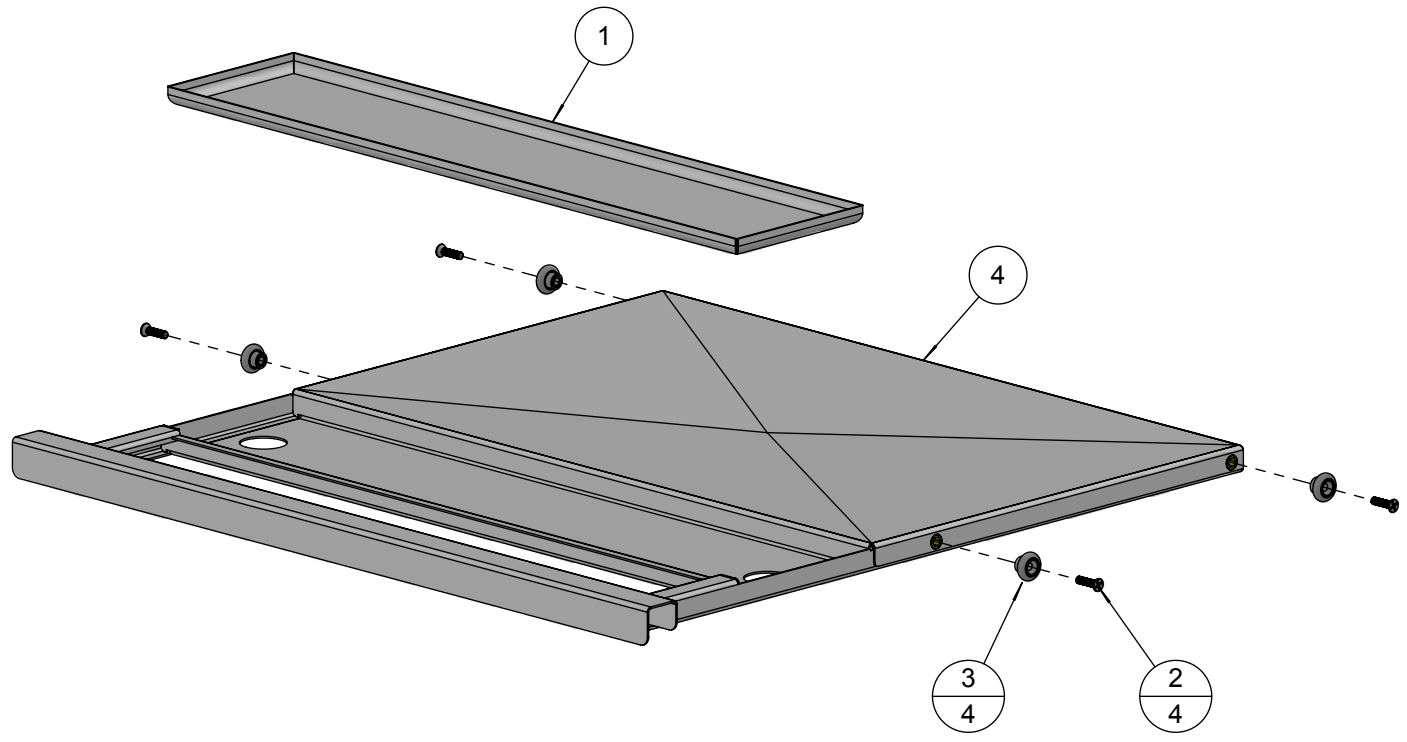
BRACKETS USED ON ALX2-30SZ MODEL:

- (4) (5) (8) (9) (10) (12)



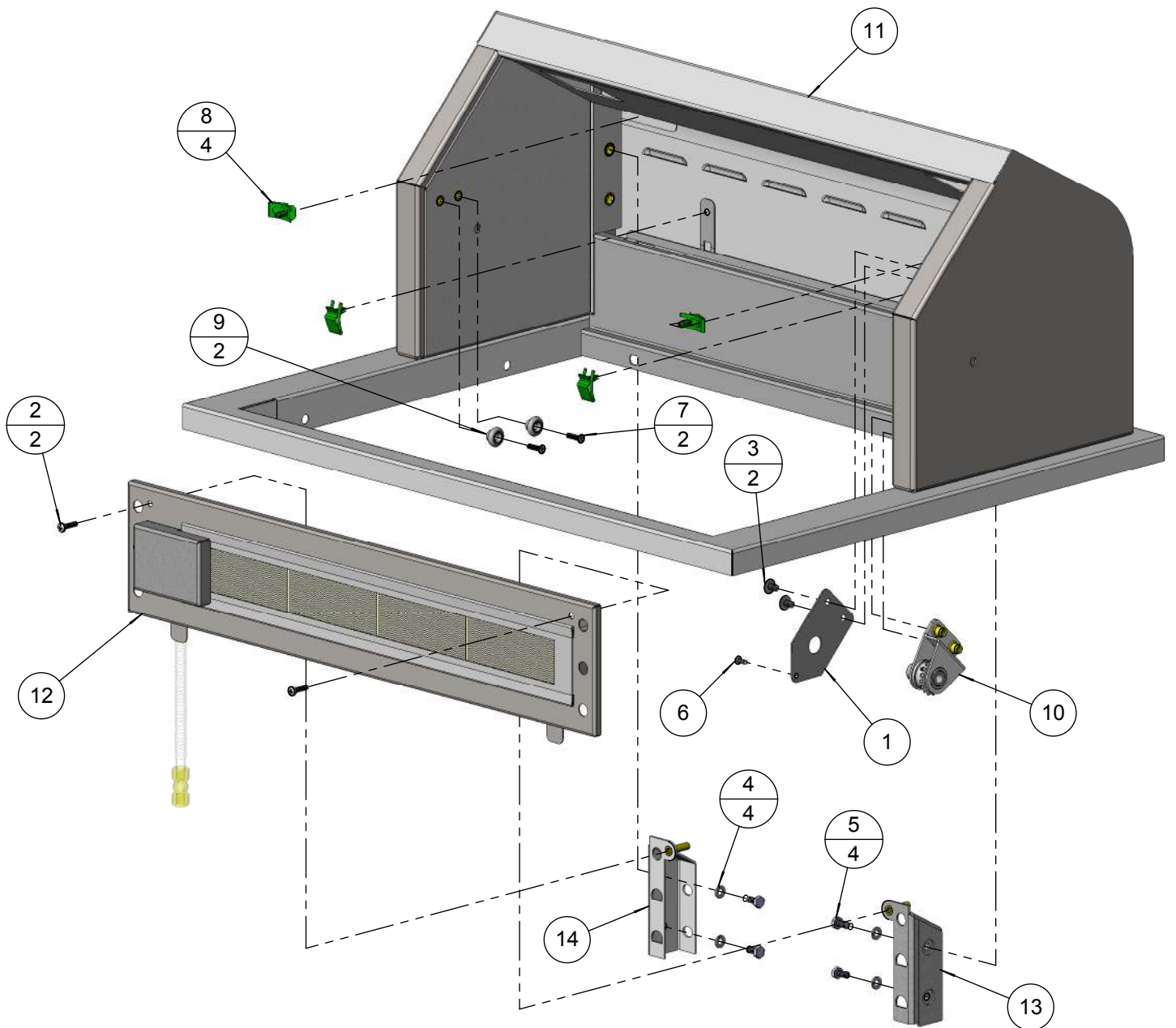
BILL OF MATERIAL

| NO. | PART # | DESCRIPTION | QTY |
|-----|----------|---|-----|
| 1 | 100-1973 | ALX2-30 / 30SZ - GREASE TRAY REMOVABLE PAN | 1 |
| 2 | 200-0148 | SCREW 10-32 X 3/4" - FLAT HEAD - PHILIPS - 82° - SS | 4 |
| 3 | 290-0119 | ROLLER WHEEL - STAINLESS STL - 3/4" Ø - | 4 |
| 4 | 510-0498 | ALX2-30 / 30SZ GREASE TRAY - WELDED PARTS | 1 |



BILL OF MATERIAL

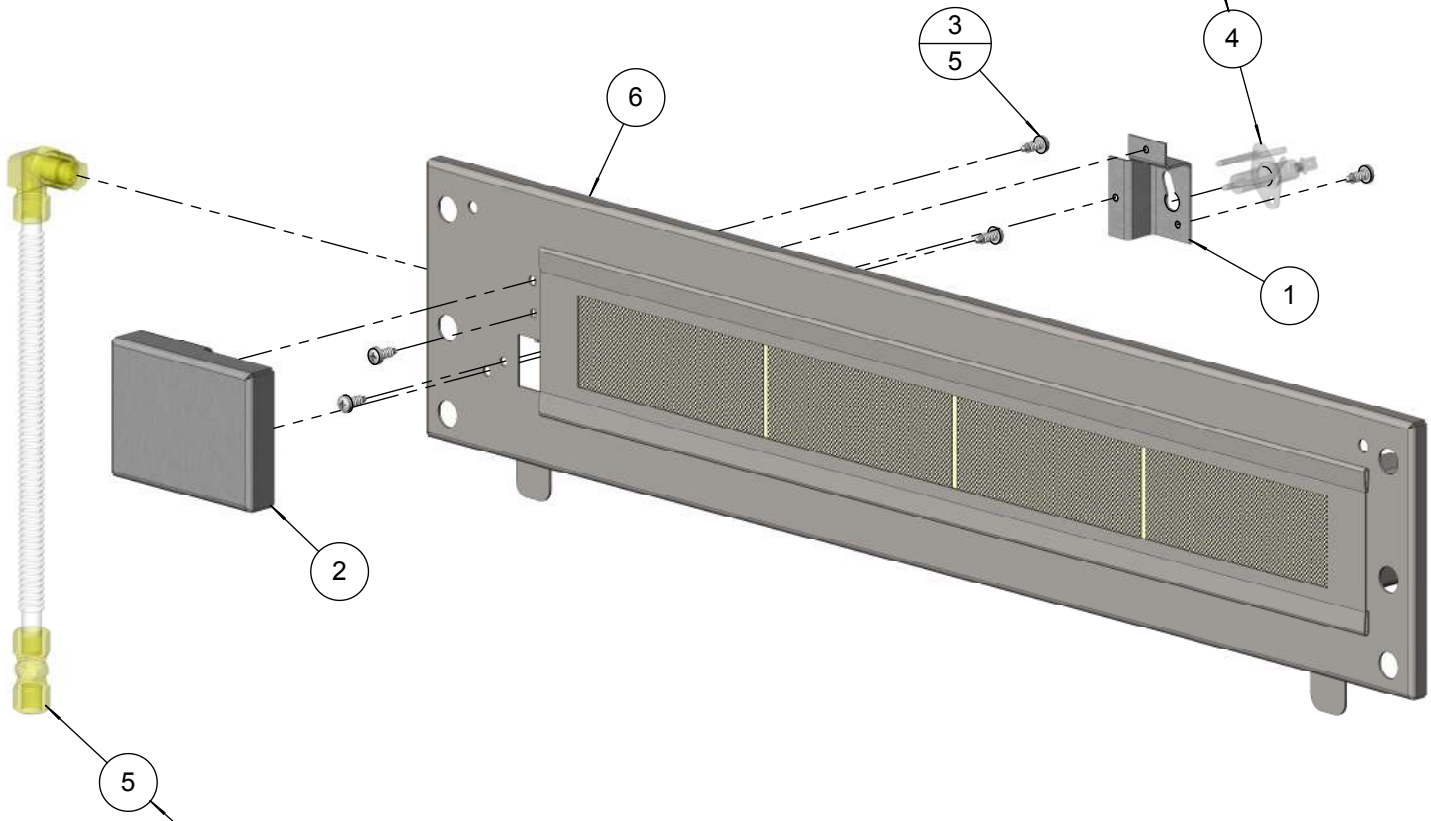
| NO. | PART # | DESCRIPTION | QTY |
|-----|----------|---|-----|
| 1 | 100-1092 | ALX2 - ROTISSERIE GEAR COVER | 1 |
| 2 | 200-0062 | 10-32 X 3/4 - PAN HEAD - PHILIPS SCREW | 2 |
| 3 | 200-0086 | 1/4-20 X 3/8 - TRUSS HEAD - PHILIPS SCREW | 2 |
| 4 | 200-0087 | WASHER - 1/4" SPRING LOCK- REGULAR - SS | 4 |
| 5 | 200-0089 | BOLT - HEX HEAD 1/4-20 x 1/2" L | 4 |
| 6 | 200-0111 | SCREW 8-18 X 1/2 - SELF TAP - 410 SS | 1 |
| 7 | 200-0148 | SCREW 10-32 X 3/4" - FLAT HEAD - PHILIPS - 82° - SS | 2 |
| 8 | 200-0305 | SPEED NUT TINNEMAN U-TYPE | 4 |
| 9 | 290-0119 | ROLLER WHEEL - STAINLESS STL - 3/4" Ø - | 2 |
| 10 | 510-0139 | ALX2 - ROTISSERIE GEAR ASSEMBLY | 1 |
| 11 | 510-0477 | ALX2-30 / 30SZ BACK HOOD & RIM - WELDED PARTS | 1 |
| 12 | 510-0478 | ALX2-30 / 30SZ - ROTISSERIE PANEL ASSY | 1 |
| 13 | 510-0483 | ALX2-30 / 30SZ- WARMING RACK BRACKET - RT SIDE | 1 |
| 14 | 510-0484 | ALX2-30 / 30SZ - WARMING RACK BRACKET-LT SIDE | 1 |



BILL OF MATERIAL

| NO. | PART # | DESCRIPTION | QTY |
|-----|----------|---|-----|
| 1 | 100-1986 | ALX2-30 / 30SZ - ROTISSERIE BURNER IGNITER BRAKET | 1 |
| 2 | 100-1987 | ALX2-30 / 30SZ - ROTISSERIE BURNER IGNITER COVER | 1 |
| 3 | 200-0111 | SCREW 8-18 X 1/2 - SELF TAP - 410 SS | 5 |
| 4 | 210-0240 | ELECTRODE - DUAL TIP "L" SHAPE- ROTISSERIE | 1 |
| 5 | 510-0469 | ALX2 - ROTISSERIE PIPING SUBASSEMBLY | 1 |
| 6 | 510-0482 | ALX2-30 / 30SZ - ROTISSERIE PANEL - WELDED PARTS | 1 |

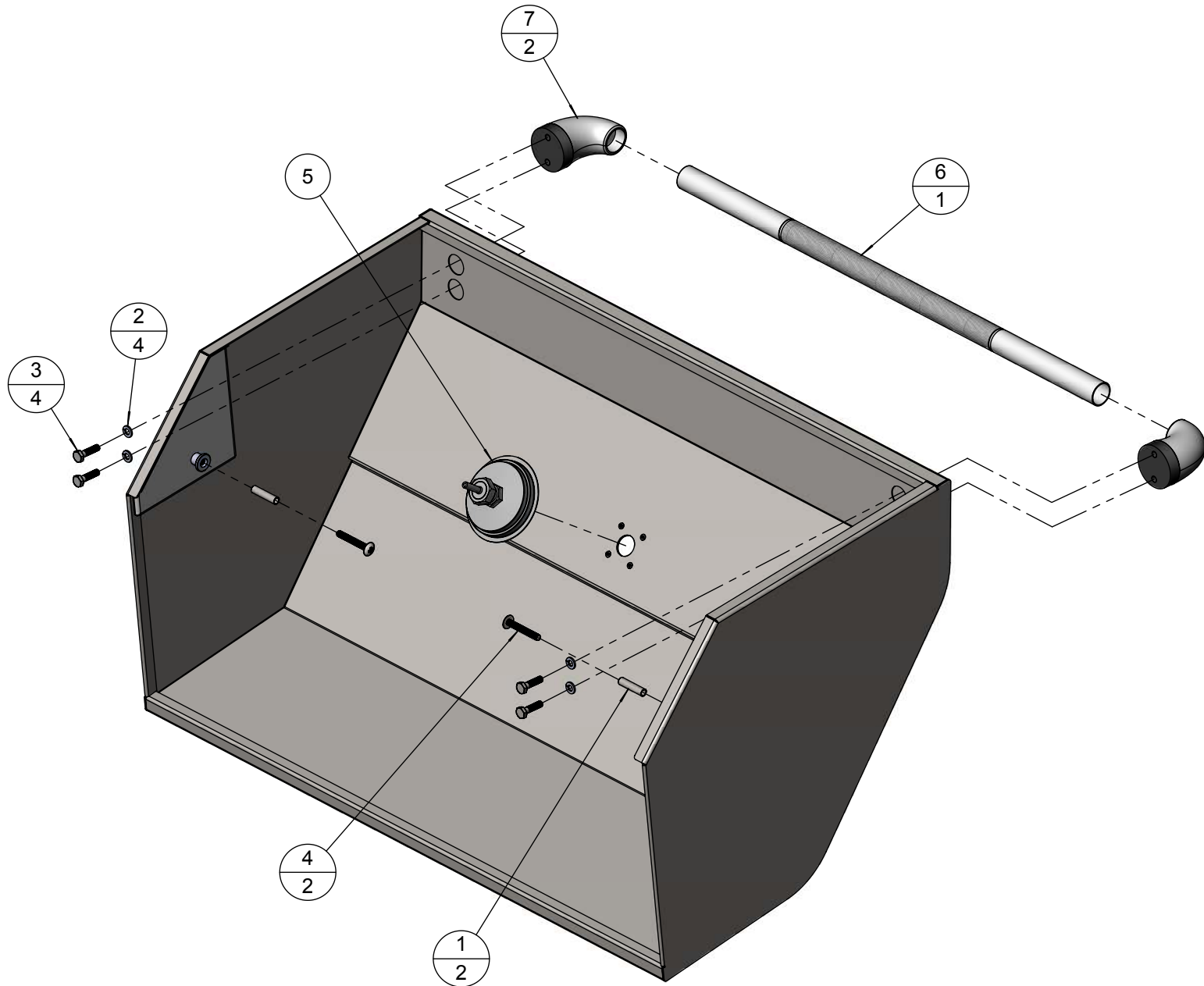
ELECTRODE SHOWN FOR ASSEMBLY PURPOSES ONLY
REFER TO ASSEMBLY DRAWING 510-0494 FOR ALL
ELECTRICAL COMPONENTS



THESE PARTS SHOWN FOR ASSEMBLY PURPOSES ONLY
REFER TO ASSEMBLY DRAWING 510-0465 FOR COMPLETE
PARTS BREAKDOWN AND ORIFICE INFORMATION

BILL OF MATERIAL

| NO. | PART # | DESCRIPTION | QTY |
|-----|----------|--|-----|
| 1 | 100-1873 | ALX2 - FRONT HOOD PIVOT SLEEVE | 2 |
| 2 | 200-0087 | 1/4" LOCK WASHER | 4 |
| 3 | 200-0091 | HH- HD - 1/4-20 x 1 x .75 THREAD | 4 |
| 4 | 200-0165 | SCREW 1/4-20 X 1 3/4 - TRUSS HEAD - PHILIPS - 410 SS | 2 |
| 5 | 210-0418 | ALFRESCO - 3-1/8"Ø - ALX2 THERMOMETER | 1 |
| 6 | 290-0029 | HANDLE BAR - 24" KNURLED | 1 |
| 7 | 290-0063 | HANDLE - END CAP ASSEMBLY | 2 |
| 8 | 510-0480 | ALX2-30 / 30SZ - FRONT HOOD - WELDED PARTS | 1 |



THE INFORMATION CONTAINED IN THIS DRAWING IS THE SOLE PROPERTY OF SUPERIOR EQUIPMENT SOLUTIONS INC. ANY REPRODUCTION IN PART OR AS A WHOLE WITHOUT WRITTEN PERMISSION FROM SUPERIOR EQUIPMENT SOLUTIONS, INC. IS PROHIBITED.

DRAWN BY: ADRIAN CRISCI
CREATED: 1/12/2011 9:57:02 AM

PROJECT TITLE:
ALX2-30/ 30SZ

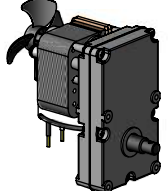
DRAWING TITLE:
ALX2-30 / 30SZ FRONT HOOD ASSEMBLY

DRAWING NO.: 510-0480
SHEET 1 OF 1

BILL OF MATERIAL

| NO. | PART # | DESCRIPTION | QTY |
|-----|----------|--|-----|
| 1 | 210-0189 | ELECTRODE - "L" SHAPED - U-BURNER / SMOKER | 3 |
| 2 | 210-0192 | ELECTRODE - DUAL TIP - SEARZONE™ | 1 |
| 3 | 210-0198 | SWITCH - WEATHER BOOT & CAP | 3 |
| 4 | 210-0240 | ELECTRODE - DUAL TIP "L" SHAPE- ROTISSERIE | 1 |
| 5 | 210-0465 | IGNITER MODULE (4 POINTS) | 1 |
| 6 | 210-0506 | LIGHT SWITCH - [OFF/ ON] TOGGLE | 1 |
| 7 | 210-0507 | ROTISSERIE SWITCH - [OFF/ ON] TOGGLE | 1 |
| 8 | 210-0508 | IGNITER SWITCH - [OFF/ ON] MOMENTARY | 1 |
| 9 | 210-0509 | LAMP ASSEMBLY (32" WIRE LENGTH) | 1 |
| 10 | 210-0510 | LAMP ASSEMBLY (56" WIRE LENGTH) | 1 |
| 11 | 210-0520 | ALX2-30 / 30SZ - IGNITER WIRE KIT | 1 |
| 12 | 510-0514 | ALX2 - ROTISSERIE MOTOR BOX ASSEMBLY | 1 |

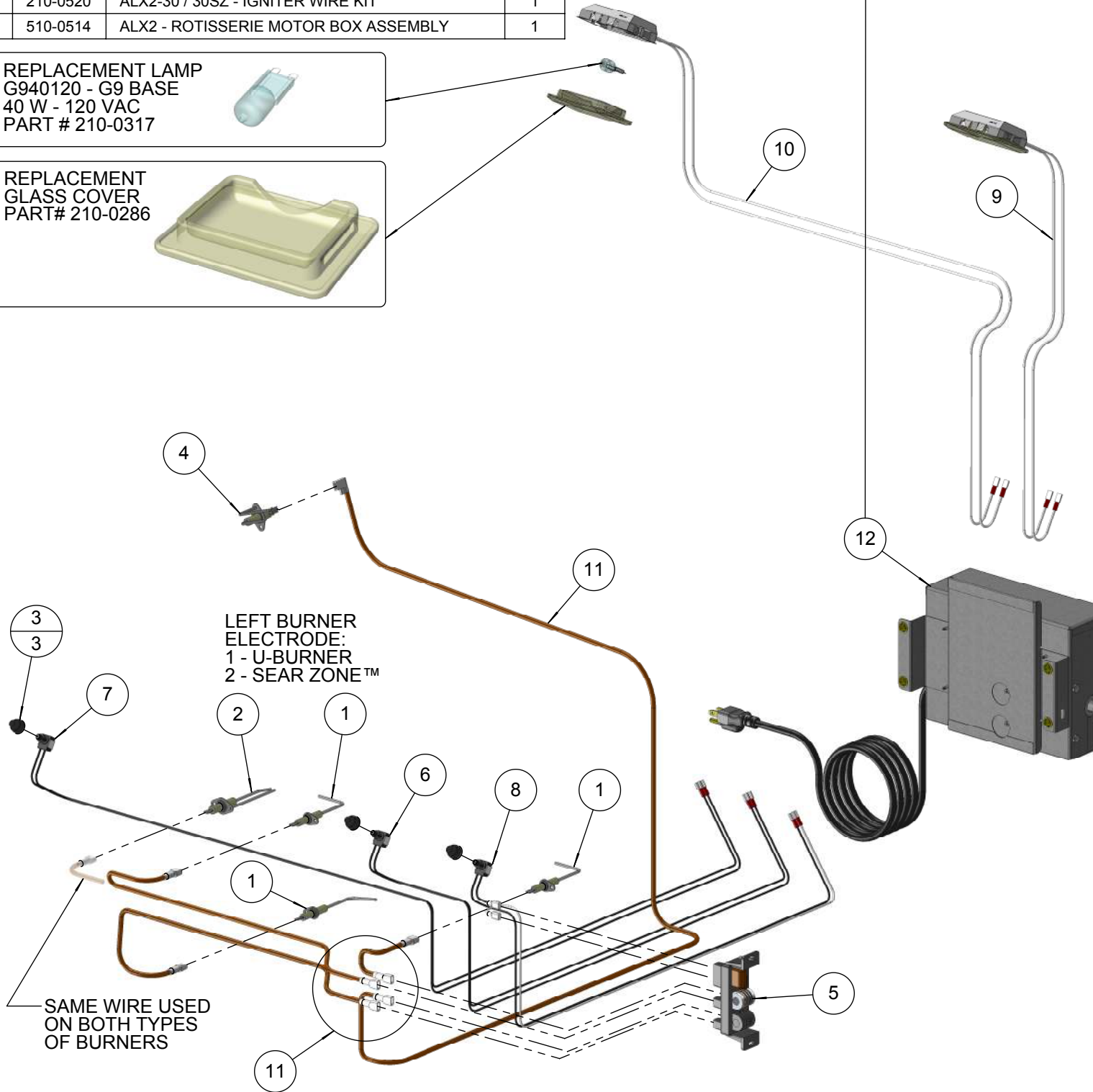
REPLACEMENT ROTISSERIE MOTOR
PART # 210-0235



REPLACEMENT LAMP
G940120 - G9 BASE
40 W - 120 VAC
PART # 210-0317

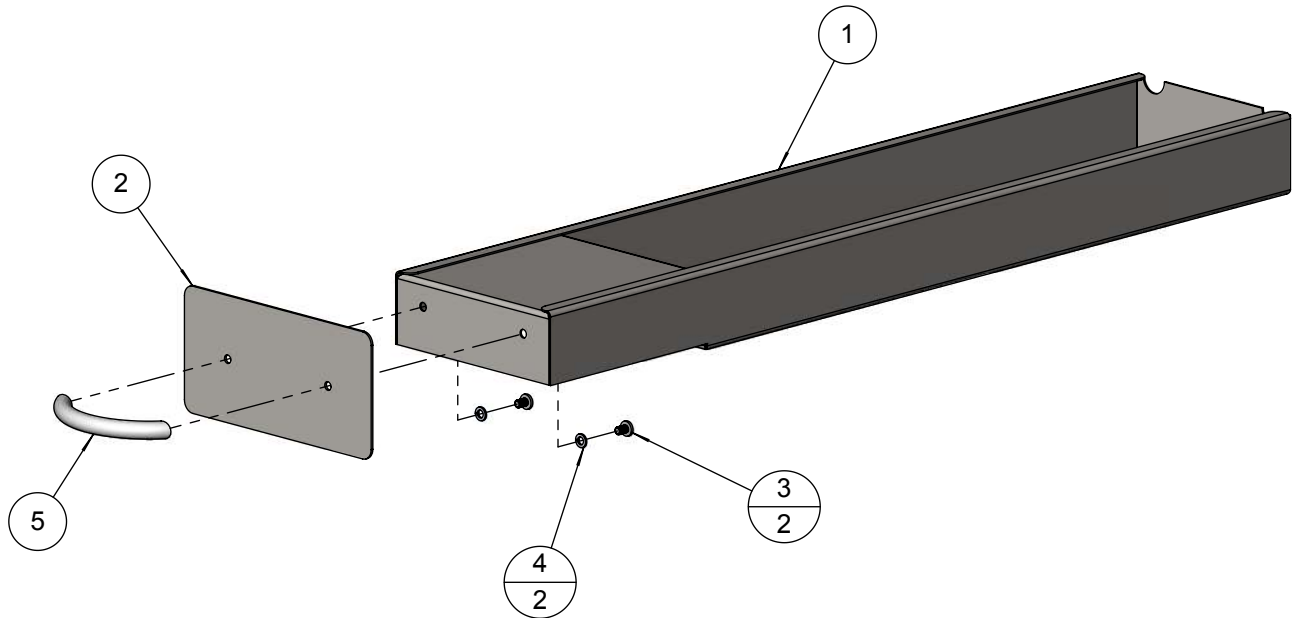


REPLACEMENT GLASS COVER
PART# 210-0286

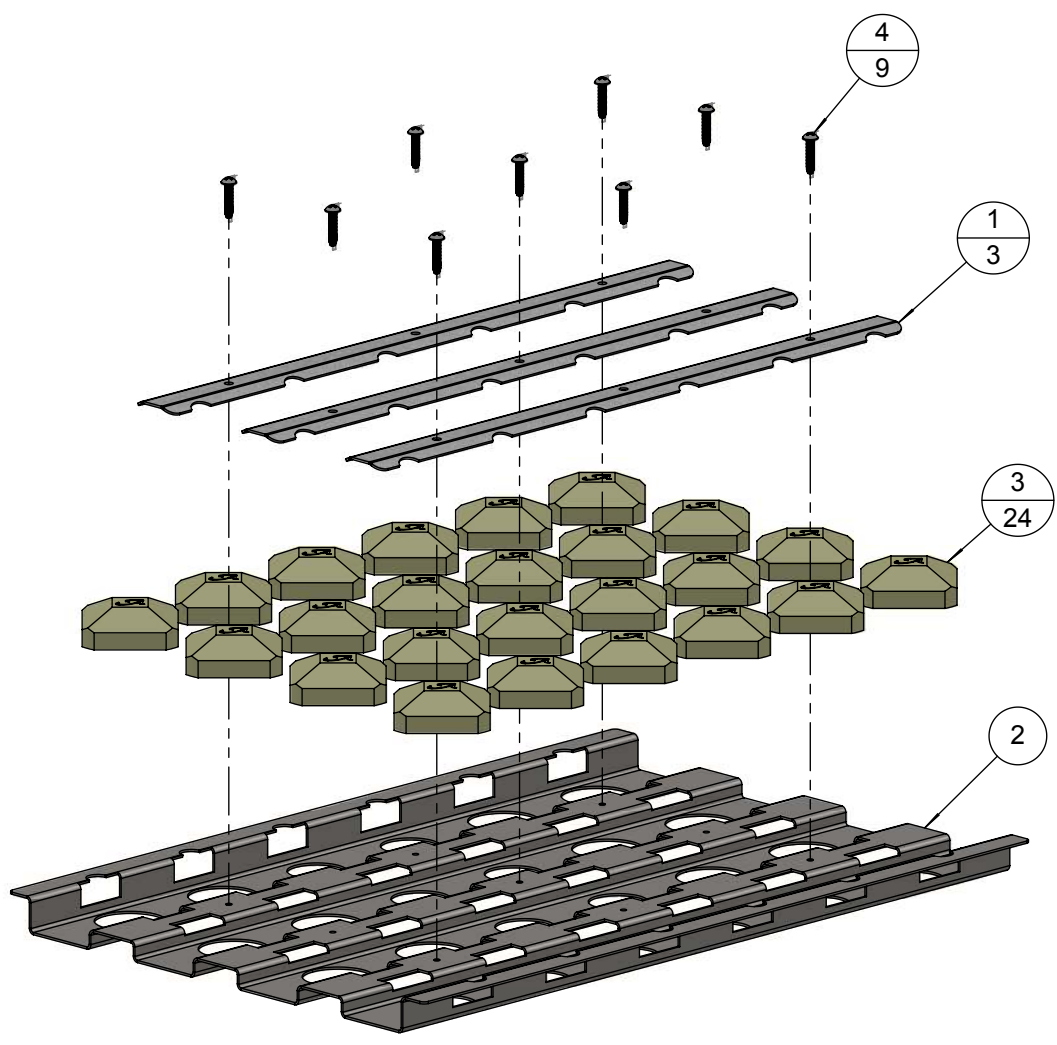
BILL OF MATERIAL

| NO. | PART # | DESCRIPTION | QTY |
|-----|----------|---------------------------------------|-----|
| 1 | 100-1880 | ALX2 - SMOKER TRAY | 1 |
| 2 | 100-1881 | ALX2 - SMOKER TRAY HANDLE PLATE | 1 |
| 3 | 200-0083 | 8-32 X 1/4 - PAN HEAD - PHILIPS SCREW | 2 |
| 4 | 200-0200 | WASHER - # 8 - LOCK SPRING - SS | 2 |
| 5 | 290-0135 | HANDLE - 3/8"Ø X 3" L - TAPPED | 1 |



BILL OF MATERIAL

| NO. | PART # | DESCRIPTION | QTY |
|-----|----------|--|-----|
| 1 | 100-1895 | ALX2 - BRIQUETTE LOCK BAR | 3 |
| 2 | 100-1894 | ALX2 - BRIQUETTE TRAY BASE | 1 |
| 3 | 265-0005 | BRIQUETTE - ALFRESCO CUSTOM | 24 |
| 4 | 200-0312 | SCREW 8-32 x 3/4"- PAN HEAD - PHILIPS - THREAD CUTTER TYPE F | 9 |



TM

*Alfresco*TM

Open Air Culinary Systems

ALX2 • PARTS MANUAL
ALFRESCOTM GOURMET GRILLS
ALL RIGHTS RESERVED • 01/2012