



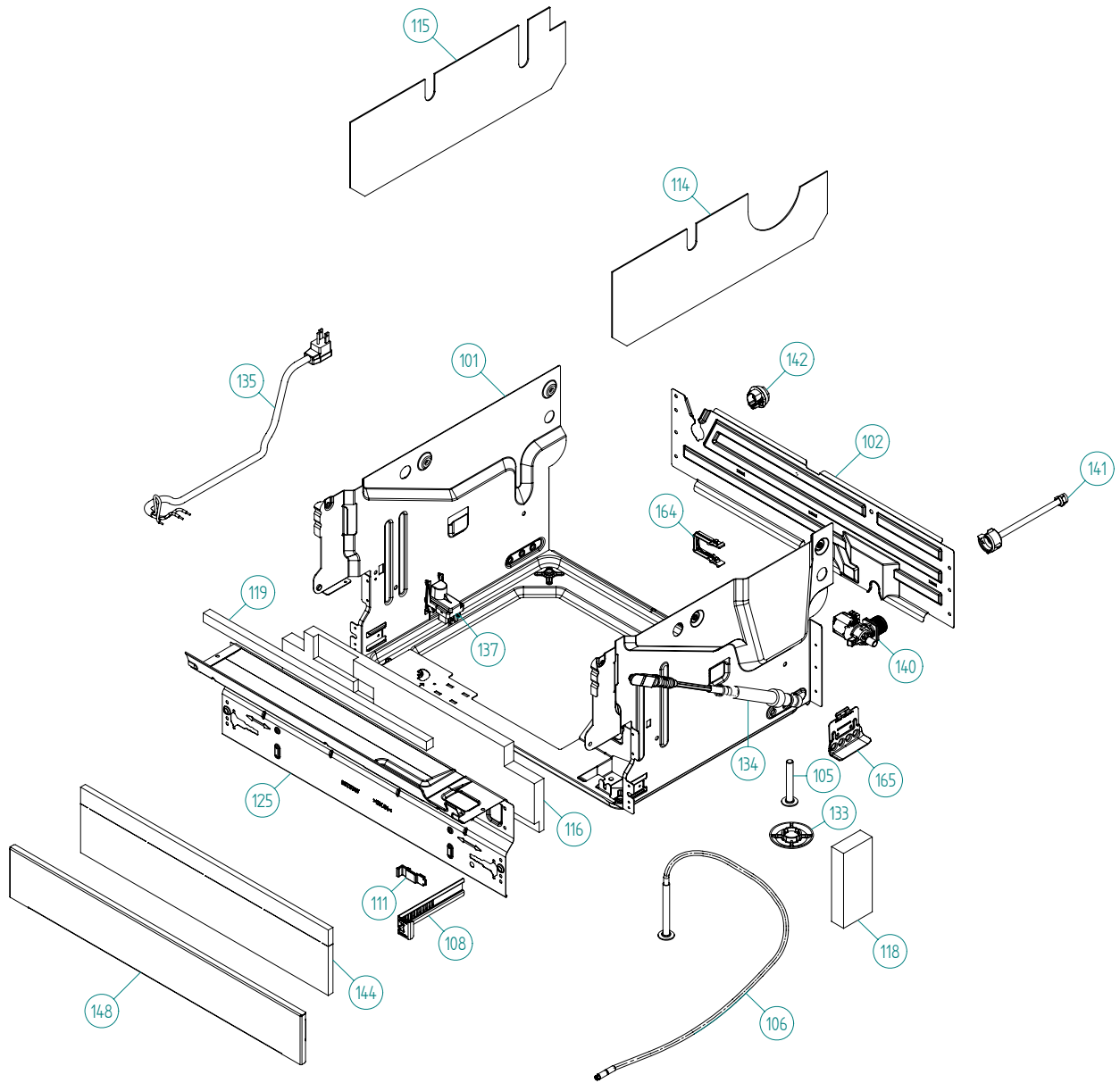
Spare Parts Catalogue

ASKO Dishwashers \ ASKO 5000 XXL Series
Type: DW70.3
Model: D5253 XXL TH US SS

Prod. No: 1075253121
April 24th 2012

ASKO Appliances Inc.

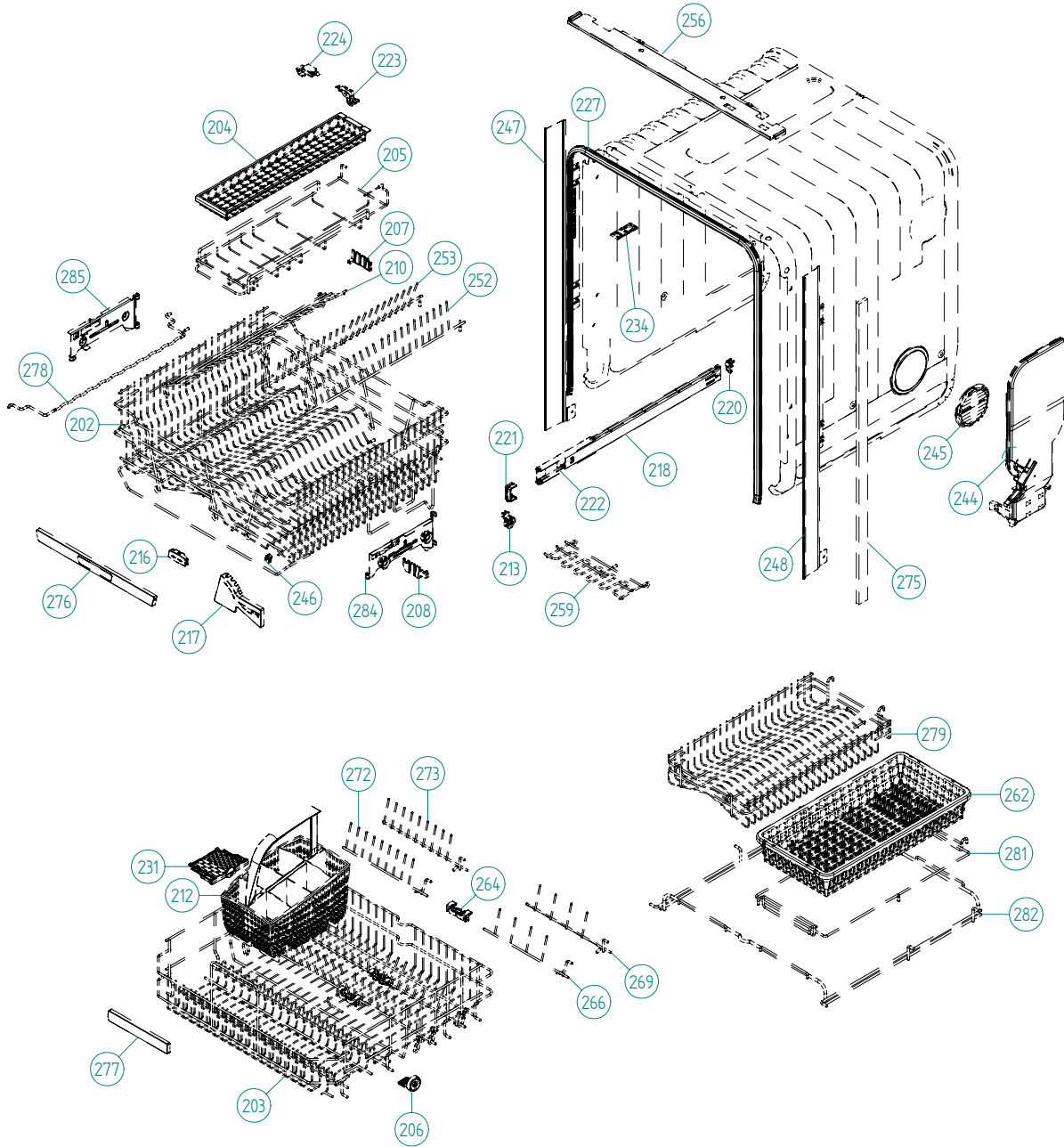
4001 E Plano Parkway #1004001 E Plano Parkway #100
Plano, Texas 75074



Base and related parts

ASKO, D5253 XXL TH US - SS (DW70.3)

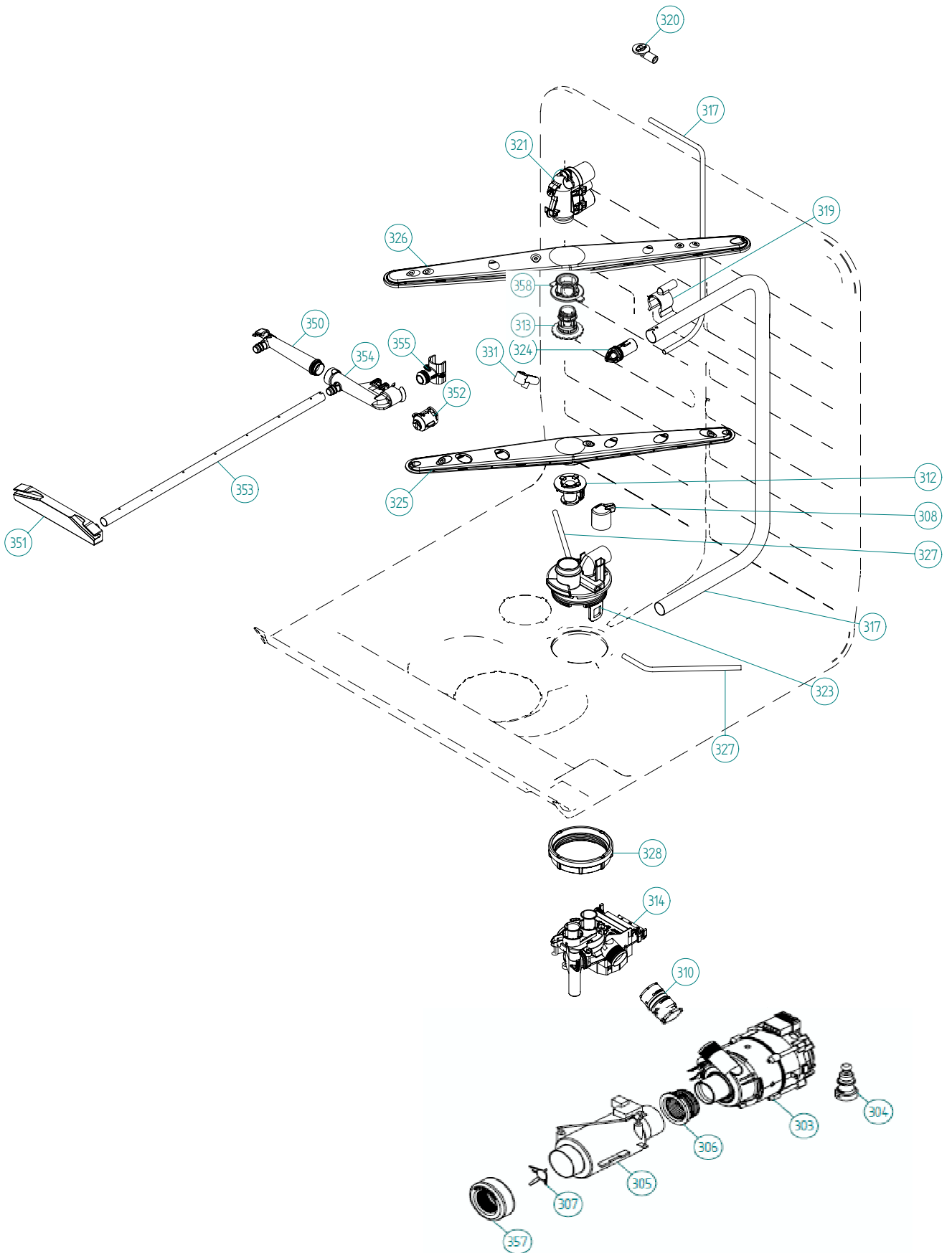
| Pos | Spare part No. | Description | Qty | Comment |
|-------|----------------|----------------------------------|--------|---------|
| 101 | 8801387 | BOTTOM OUTER COMPL. | 1 Pc's | |
| 101-a | 8901104 | Screw 20 Torx Machine | 2 Pc's | |
| 101-b | 8901110 | Screw w/ORing DW 05/06 25T | 4 Pc's | |
| 102 | 8078006 | REAR PANEL | 1 Pc's | |
| 105 | 8074228 | Leveling Foot M10X75 T30 8.8 FZB | 2 Pc's | |
| 106 | 8082222 | FOOT ADJUSTABLE FROM FRONT CPL | 1 Pc's | |
| 108 | 8073480 | Toe Kick bracket Right & Left | 2 Pc's | |
| 111 | 8073481-49 | Toe Kick Bracket Clip L-Grey | 2 Pc's | |
| 114 | 8078109 | SOUND ABSORP. SELF AD. RIGHT | 1 Pc's | |
| 115 | 8078108 | SOUND ABSORP. SELF AD. LEFT | 1 Pc's | |
| 116 | 8078114 | SOUND ABSORBENT GUARD PLATE | 1 Pc's | |
| 118 | 8078112 | SOUND AB.BLOCK BOTTOM OUTER | 2 Pc's | |
| 119 | 8078122 | SOUND ABSORBTION PROFILE | 1 Pc's | |
| 125 | 8078008 | GUARD PLATE STRAIGHT | 1 Pc's | |
| 133 | 8051957 | Glide Foot | 3 Pc's | |
| 134 | 8079528 | Door Spring-DW70-Yellow | 1 Pc's | |
| 134 | 8079529 | Door Spring-DW70-Red | 1 Pc's | |
| 135 | 8083262 | CORD SET 15A AMERICA | 1 Pc's | |
| 135 | 8079046 | CORD SET AMERICA | 1 Pc's | |
| 137 | 8083041 | Terminal Block w/RFI DW70 | 1 Pc's | |
| 140 | 8801376 | KIT INL.VALVE/LOCKARM SING120V | 1 Pc's | |
| 140-a | 8079597 | LOCK ARM INLET VALVE | 1 Pc's | |
| 141 | 8079522 | PEX Inlet hose DW | 1 Pc's | |
| 142 | 8006948 | Grommet | 1 Pc's | |
| 144 | 8074585 | Felt Kick Plate 05 | 1 Pc's | |
| 148 | 8073506-81 | kick plate metallic | 1 Pc's | |
| 162 | 8079832 | CABLE HOLDER SRC-8-01 | 1 Pc's | |
| 163 | 8078113 | SOUND ABSORBTION REARPANEL | 1 Pc's | |
| 164 | 8079597 | LOCK ARM INLET VALVE | 1 Pc's | |
| 165 | 8078013 | DOOR SPRING HOLDER | 1 Pc's | |
| 165-a | 8902362 | SCREW RTK ST 4,2X9,5 FZB WAX. | 1 Pc's | |



Baskets and related parts

ASKO, D5253 XXL TH US - SS (DW70.3)

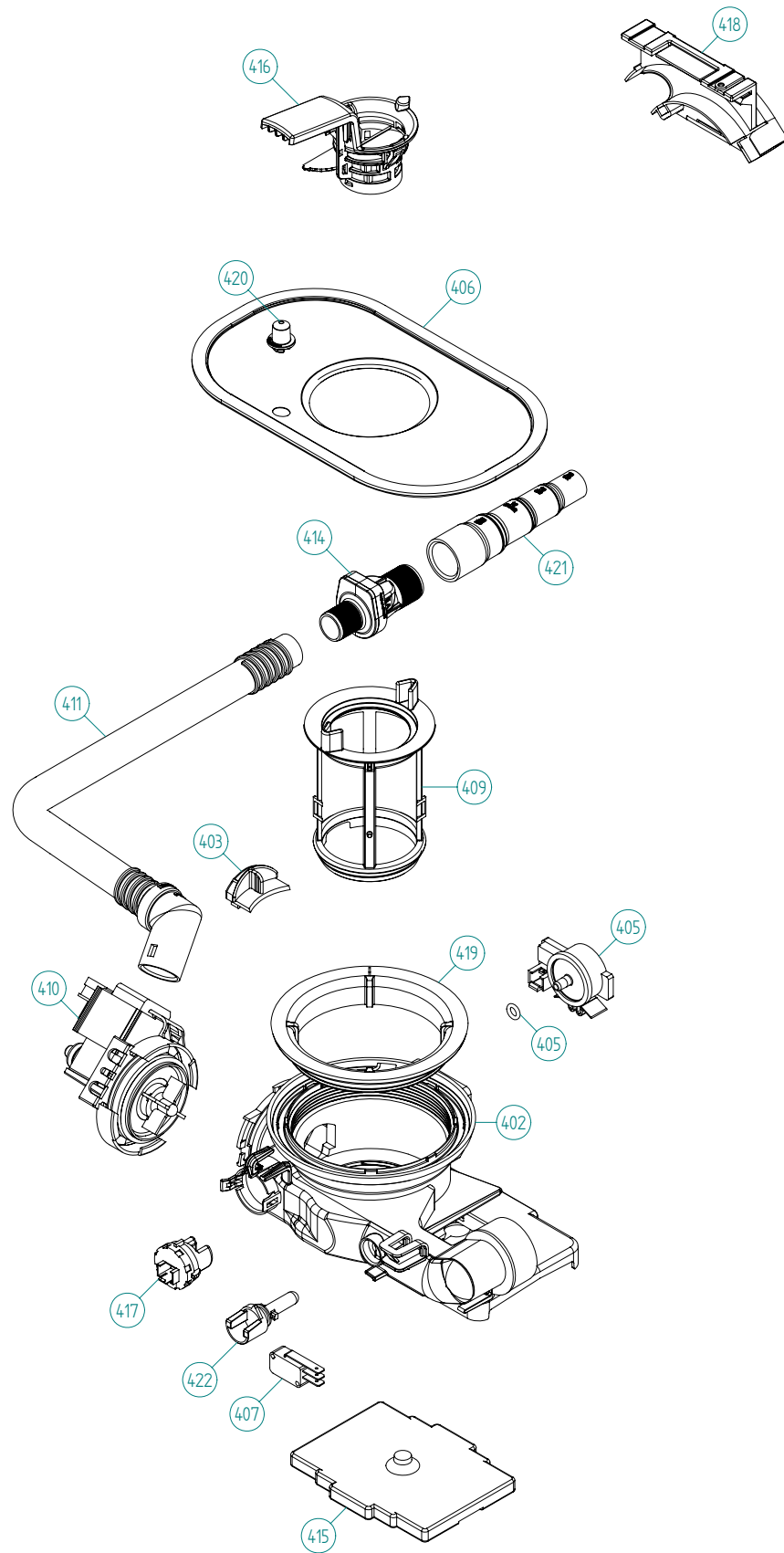
| Pos | Spare part No. | Description | Qty | Comment |
|-------|----------------|--------------------------------|--------|------------------|
| 201 | 8057056 | - | 1 Pc's | Not a spare part |
| 202 | 8801358-36 | UPPER BASKET EXCL. COMPL. H&L | 1 Pc's | |
| 203 | 8801316-36 | LOWER BASKET EXCL D.GREY 07 | 1 Pc's | New design |
| 204 | 8053376-77 | Long Rack Silverware Upper | 1 Pc's | |
| 205 | 8057058-36 | Knife Basket D-Grey | 1 Pc's | |
| 206 | 8079257-77 | WHEEL FOR LOW DISHW BASKET CPL | 8 Pc's | |
| 207 | 8057505-77 | Knife Holder DW 05/06 | 1 Pc's | |
| 208 | 8071214-77 | Knife Holder 05/06 DW | 2 Pc's | |
| 210 | 8071337-36 | Cup Shelf Wine Glass 05/06 DW | 1 Pc's | |
| 212 | 8801396-77 | Cutlery Bskt for Stnd Tines | 1 Pc's | |
| 213 | 8058498-77 | Upper Basket Wheel | 4 Pc's | |
| 216 | 8072553-77 | BRACKET PIN ROW UPPER BASKET | 1 Pc's | |
| 217 | 8072554-77 | KNIFE GUARD | 1 Pc's | |
| 218 | 8801350 | DW Upper Basket Guide Rail Kit | 2 Pc's | |
| 220 | 8057978-77 | DW Rail Stop - Back Grey | 2 Pc's | |
| 221 | 8088703-77 | BASKET STOP | 2 Pc's | |
| 222 | 8801349-77 | KIT BALL HOLDER INCL. BALLS | 1 Pc's | |
| 223 | 8057502 | Clip Upper Knife Rack DW | 1 Pc's | |
| 224 | 8058453 | Clip Knife Basket 1800s DW | 1 Pc's | |
| 225 | 8057978-77 | DW Rail Stop - Back Grey | 2 Pc's | |
| 227 | 8057489-F | DOOR STRIP XXL DW70 | 1 Pc's | |
| 231 | 8079251-77 | DOOR CUTLERYBASKET UL4 | 1 Pc's | |
| 234 | 8070649 | Lock Hitch Int | 1 Pc's | |
| 234-a | 8070654 | Lock Washer Int | 1 Pc's | |
| 234-b | 8901104 | Screw 20 Torx Machine | 1 Pc's | |
| 244 | 8078300 | AIRBREAK STD. DW70 UL4 | 1 Pc's | |
| 245 | 8057536-77 | LOCKRING AIREBREAKER GREY | 1 Pc's | |
| 246 | 8075350 | Clip for Knife Guard | 1 Pc's | |
| 247 | 8074342-E-90 | Trim Strip Left XXL SS | 1 Pc's | |
| 247-a | 8900646 | Screw 20 Torx SS | 2 Pc's | |
| 248 | 8074343-E-90 | Trim Strip Right XXL SS | 1 Pc's | |
| 248-a | 8900646 | Screw 20 Torx SS | 2 Pc's | |
| 252 | 8072552-36 | PLATERACK RIGHT U-BASKET | 1 Pc's | |
| 253 | 8072551-36 | PLATERACK LEFT U-BASKET | 1 Pc's | |
| 256 | 8075663-90 | Top Trim Rail Low Stainless | 1 Pc's | |
| 259 | 8076619-36 | wine glass cup shelf divider | 2 Pc's | |
| 262 | 8083376-77 | INSERT CUTLERY BASKET MIDDLE | 1 Pc's | |
| 264 | 8076632-77 | Holder | 3 Pc's | |
| 266 | 8079130-36 | PlateRack short/wide R-FT | 1 Pc's | |
| 269 | 8079131-36 | PlateRack short/wide R-BK | 1 Pc's | |
| 272 | 8079123-36 | PlateRack short/narrow L-FT | 1 Pc's | |
| 273 | 8079124-36 | PlateRack short/narrow L-BK | 1 Pc's | |
| 275 | 8070614 | SEALING STRIPE TRIM STRIPE USA | 2 Pc's | |
| 276 | 8801330-77 | HANDLE U-BASKET COMPL. ASKO | 1 Pc's | |
| 277 | 8801332-77 | HANDLE LOWER BASKET COMPL. | 1 Pc's | |
| 278 | 8072764-36 | GLASS SUPPORT D-GREY | 1 Pc's | |
| 278 | 8079144-36 | GLASS SUPPORT D-GREY | 1 Pc's | |
| 279 | 8079255-36 | INSERT BOWL BASKET DW70 | 1 Pc's | |
| 281 | 8083393-36 | RACK CUTLERY BASKET | 1 Pc's | |
| 282 | 8079253-36 | MIDDLE BASKET DW70 | 1 Pc's | |
| 284 | 8079138 | Basket Adj Bracket Right | 1 Pc's | |
| 285 | 8079139 | Basket Adj Bracket Left | 1 Pc's | |



Wash System

ASKO, D5253 XXL TH US - SS (DW70.3)

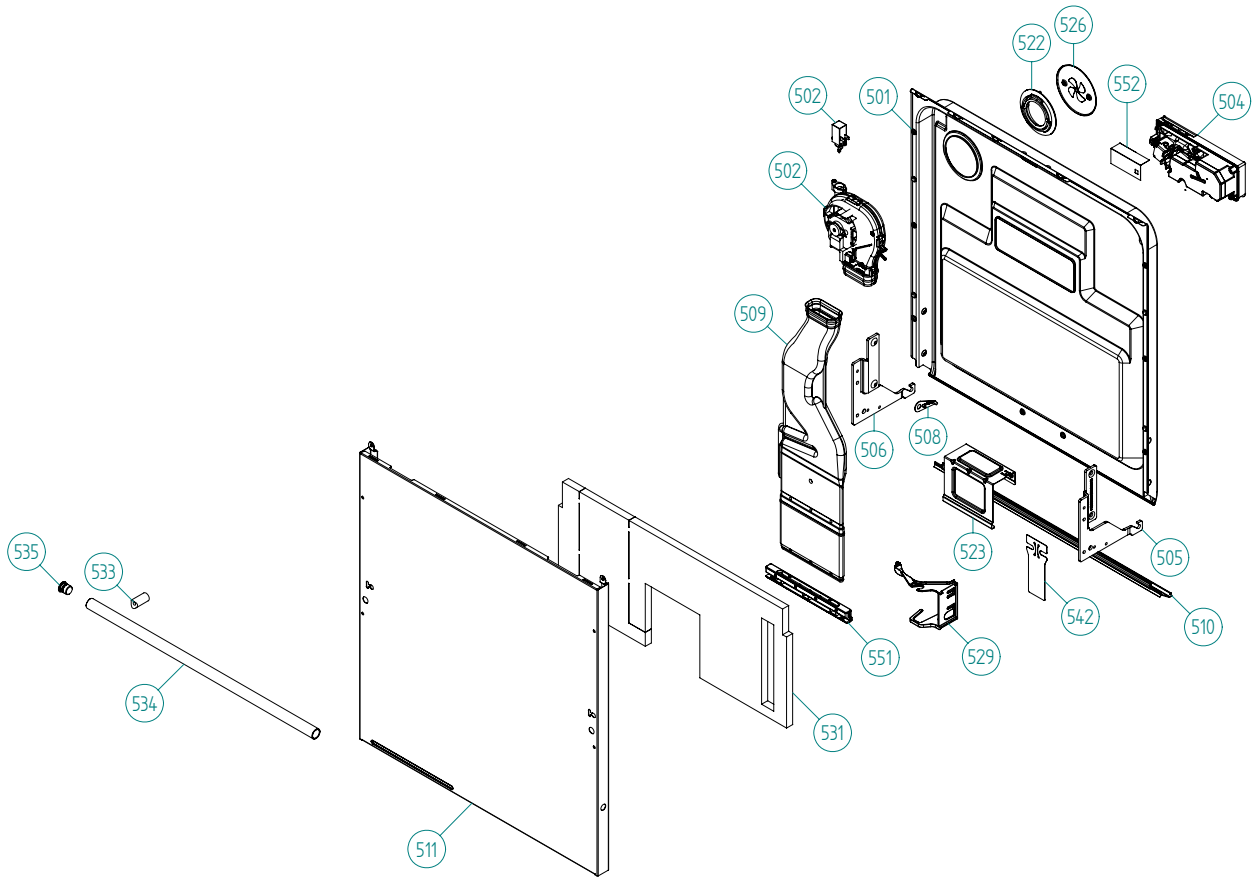
| Pos | Spare part No. | Description | Qty | Comment |
|-------|----------------|--------------------------------|--------|--------------------------------------|
| 301 | 8078001 | - | 1 Pc's | Not a spare part |
| 303 | 8078082 | CIRC.PUMP 120V 60HZ | 1 Pc's | |
| 303-a | 8083804 | Capacitor 7 0UF 400V P2 CLASS | 1 Pc's | |
| 304 | 8075130 | Rubber Damper Circ Pump | 1 Pc's | |
| 305 | 8801463 | HEATER W.INSERT 1200W120V DW70 | 1 Pc's | |
| 306 | 8079531 | SEALING HEATER DW70 UL4 | 2 Pc's | Only 1 pc from 2009-06-11 |
| 307 | 8079575 | INSERT FOR HEATER | 1 Pc's | |
| 308 | 8073385-77 | Cup Drainage Gray | 1 Pc's | |
| 310 | 8801409 | Hose Circ Pump | 1 Pc's | |
| 310-a | 8056491 | HOSE CLIP 30.1-708 | 2 Pc's | |
| 312 | 8801270 | Spray Arm Bearing Kit | 1 Pc's | |
| 313 | 8079108-77 | SPRAYARM BEARING H&L U.BASKET | 1 Pc's | |
| 314 | 8078085 | WATER DIVERTER VALVE 120V 60HZ | 1 Pc's | |
| 314-a | 8073003 | O-ring | 2 Pc's | |
| 317 | 8079145 | SPRAY PIPE KNIFE SPRAYER H&L | 1 Pc's | |
| 317 | 8079112-EDH | SPRAYTUBE ADJ. U-BASK XXL 8,5 | 1 Pc's | |
| 319 | 8057504-77 | SPRAY PIPE GROMMET LOWER GREY | 1 Pc's | |
| 320 | 8057503-77 | Spray Pipe Grommet Upper Gray | 1 Pc's | |
| 321 | 8801359 | SPRAYTOWER COMPL H&L BASKET | 1 Pc's | |
| 323 | 8081911-LL-77 | SPRAYTOWER L FOR 2 NOZZLE UL4 | 1 Pc's | |
| 324 | 8079113-77 | GUIDE SPRAYTUBE ADJ BASKET | 1 Pc's | |
| 325 | 8072891 | Spray Arm Lower Complete | 1 Pc's | |
| 326 | 8079111 | SPRAYARM CPL H&L BASKET | 1 Pc's | |
| 327 | 8073381 | Tube Pot Rinse | 1 Pc's | |
| 327 | 8079147 | POT RINSE TUBE | 1 Pc's | |
| 327-a | 8902085 | Screw 20T for Plastic | 2 Pc's | |
| 328 | 8071607 | Locking Spray Pipe Bearing | 1 Pc's | |
| 331 | 8072543-77 | Spray Nozzle | 2 Pc's | For part no 8073381 and 8076902-L-77 |
| 350 | 8079268-77 | TERMINAL CONN.SPRAY TUBE M.B | 1 Pc's | |
| 351 | 8079265-77 | SPRAY TUBE HOLDER MIDDLEBASKET | 1 Pc's | |
| 352 | 8079576-77 | Cap Spray Tube Inlet Mid/Bask | 1 Pc's | |
| 353 | 8080860 | SPRAY PIPE MIDDLE BASKET | 2 Pc's | |
| 354 | 8079266-77 | CONNECTION SPRAY PIPE BASKET | 1 Pc's | |
| 355 | 8079267-77 | SPRAY PIPE GROMMET MIDDLE BASK | 1 Pc's | |
| 357 | 8083603 | SEALING HEATER BOTTOM SUMP | 1 Pc's | |
| 358 | 8079261-77 | INSERT SPRAYARM BEAR.H&L BASK. | 1 Pc's | |



Bottom well and related parts

ASKO, D5253 XXL TH US - SS (DW70.3)

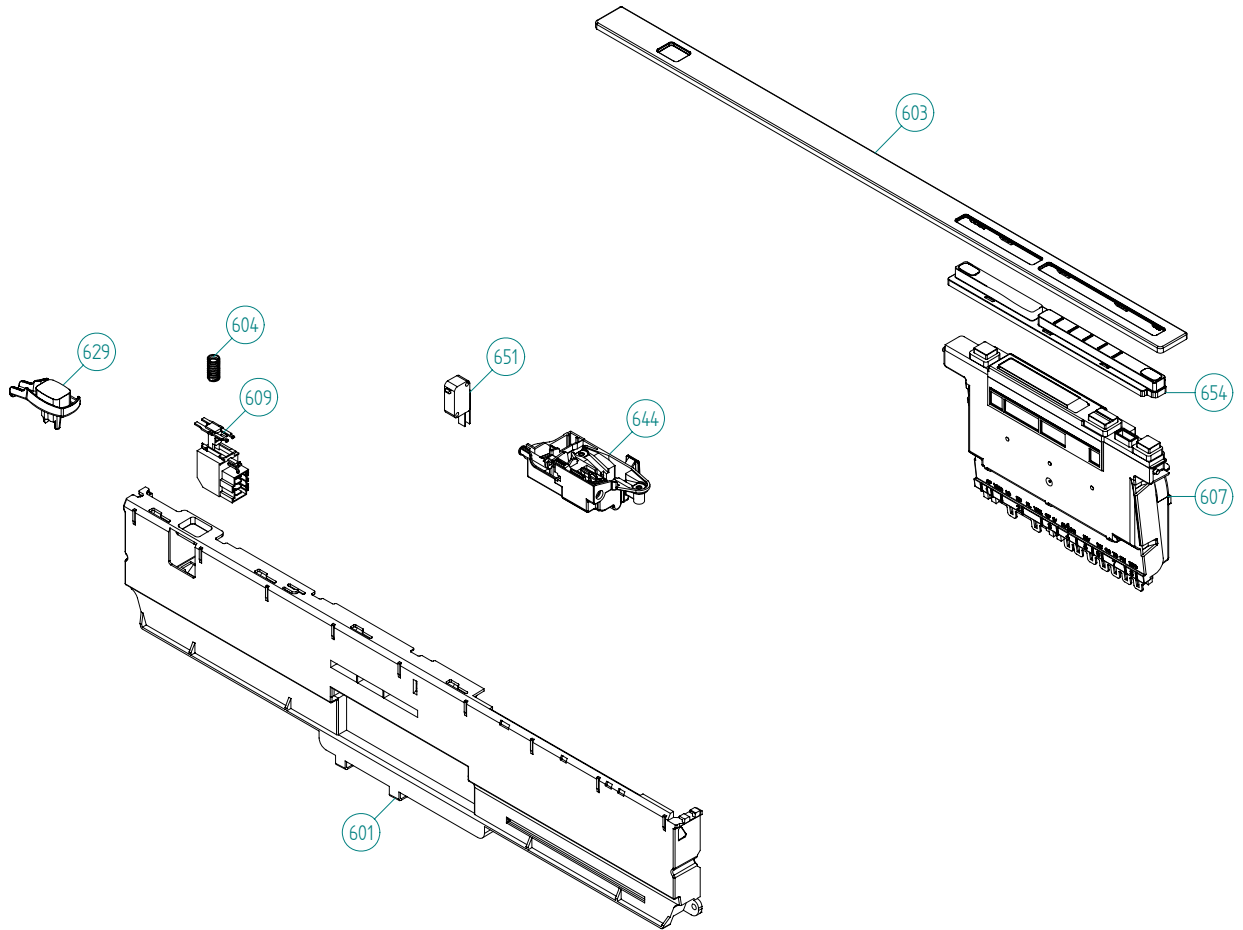
| Pos | Spare part No. | Description | Qty | Comment |
|------------|-----------------------|--------------------------------|------------|----------------|
| 402 | 8084692 | BOTTOM WELL 2 SENSOR UL4 | 1 Pc's | |
| 402 | 8801452 | KIT BOTTOM W.NO RET.VALVE 2SEN | 1 Pc's | |
| 402-a | 8073002 | ORing | 1 Pc's | |
| 403 | 8078033 | Rinse Cap Bottom Well - Yellow | 1 Pc's | |
| 405 | 8073839 | Pressure Sensor | 1 Pc's | |
| 405-a | 8074040 | O-Ring-Press Sensor | 1 Pc's | |
| 406 | 8074364 | Strainer DW20 | 1 Pc's | |
| 407 | 8073835 | Microswitch Float | 1 Pc's | |
| 409 | 8078038-77 | Pipe Filter DW70 | 1 Pc's | |
| 410 | 8078089 | Drain Pump 120V 60Hz | 1 Pc's | |
| 411 | 8079693 | Outlet Hose w/o Return Valve | 1 Pc's | |
| 411 | 8083478 | OUTLET HOSE HARD END CUFF US | 1 Pc's | |
| 411-a | 8901768 | O-RING 32,3X3 (BD) | 1 Pc's | |
| 414 | 8801248 | Check Valve Kit | 1 Pc's | |
| 414-a | 8052239 | Hose Clamp | 1 Pc's | |
| 414-b | 8053642 | Hose Clamp | 1 Pc's | |
| 415 | 8078025 | Float | 1 Pc's | |
| 416 | 8078039-77 | Strainer Basket Grey | 1 Pc's | |
| 417 | 8081321 | TURBIDITY SENSOR DW20/70 | 1 Pc's | |
| 418 | 8072528-77 | Holder Outlet Hose | 1 Pc's | |
| 418-a | 8053642 | Hose Clamp | 1 Pc's | |
| 418-b | 8052239 | Hose Clamp | 1 Pc's | |
| 418-c | 33700450 | Cable Strip | 1 Pc's | |
| 418-d | 8902072 | SCREW PT KB40X10 WN1442 GALV | 1 Pc's | |
| 419 | 8072848 | Lockring Bottom Well | 1 Pc's | |
| 420 | 8074760-77 | Ventilator | 1 Pc's | |
| 421 | 8075321 | End Cuff | 1 Pc's | |
| 422 | 8078096 | Thermistor | 1 Pc's | |
| 426 | 8078024 | SEALING NON RETURN VALVE | 1 Pc's | |
| 427 | 8901768 | O-RING 32,3X3 (BD) | 1 Pc's | |



Inner door, panel and related parts

ASKO, D5253 XXL TH US - SS (DW70.3)

| Pos | Spare part No. | Description | Qty | Comment |
|-------|------------------------------|--------------------------------|--------|---------|
| 501 | 8801380 | Door Inner w/Fan XXL DW70 | 1 Pc's | |
| 501-a | 8900646 | Screw 20 Torx SS | 6 Pc's | |
| 501-b | 8902121 | SCREW A2-MKFT 5X10 | 4 Pc's | |
| 502 | 8089580 | Fan Complete 120V | 1 Pc's | |
| 502-a | 8058501 | ORing Turbo Fan Dry 05/06 DW | 1 Pc's | |
| 502-b | 8801438 | KIT WITH NEW WAXMOTOR DW | 1 Pc's | |
| 504 | 8801343-77 | KIT Combi Dispenser 120V | 1 Pc's | |
| 504-a | 8071918 | Seal Det Comp Lid | 1 Pc's | |
| 504-b | 8071917 | CAP RINSE AGENT | 1 Pc's | |
| 504-c | 8071918 | Detergent Lid Complete | 1 Pc's | |
| 504-d | 8072288 | Sealing Strip Combi Disp. | 1 Pc's | |
| 504-f | 8902087 | Screw Plastic Housing 20 Torx | 6 Pc's | |
| 505 | 8801458 | HINGE RIGHT COMPL. DW70 | 1 Pc's | |
| 506 | 8801459 | HINGE LEFT COMPL. DW70 | 1 Pc's | |
| 507 | 8057530 | Screw hinge 05 | 2 Pc's | |
| 507-a | 33500262 | Nut Term Block | 2 Pc's | |
| 508 | Repl by 8801458 & 8801459 | Slide washer hinge bearing 05 | 2 Pc's | |
| 509 | 8078040 | Air Channel DW70 | 1 Pc's | |
| 510 | 8801294 | DOOR SEAL LOWER W.CORNER GUARD | 1 Pc's | |
| 511 | 8078019-K-91 | Outer Door for Narrow Hndl | 1 Pc's | |
| 511-a | 8900646 | Screw 20 Torx SS | 6 Pc's | |
| 522 | 8089401 | LOCKKING RING 2 FAN HOUSE UL4 | 1 Pc's | |
| 522-a | 8902085 | Screw 20T for Plastic | 2 Pc's | |
| 523 | 8057983 | Brace | 1 Pc's | |
| 523-a | 8900646 | Screw 20 Torx SS | 2 Pc's | |
| 523-b | 8902357 | Screw | 2 Pc's | |
| 526 | 8058484 | SS Coverplate Turbo Fan DW | 1 Pc's | |
| 526-a | 8902085 | Screw 20T for Plastic | 2 Pc's | |
| 529 | 8074278 | Bracket for harness | 1 Pc's | |
| 531 | 8074258 | Sound Absorbtion Outer Door | 1 Pc's | |
| 533 | 8075988 | Crossbar handle 3000XL | 2 Pc's | |
| 534 | 8072435 | Handle for 05/06 DW | 1 Pc's | |
| 534-a | 8072439 | Bolt Tension Strap W600s | 2 Pc's | |
| 535 | 8075836 | End Plugs for Handle | 1 Pc's | |
| 535-a | 8901774 | ORing | 1 Pc's | |
| 542 | 8076966 | COVER, CABLES | 1 Pc's | |
| 551 | 8079584-33 | Air Channel Nozzle DW70 | 1 Pc's | |
| 552 | 8083021 | COVER COMBI DISPENSER | 1 Pc's | |

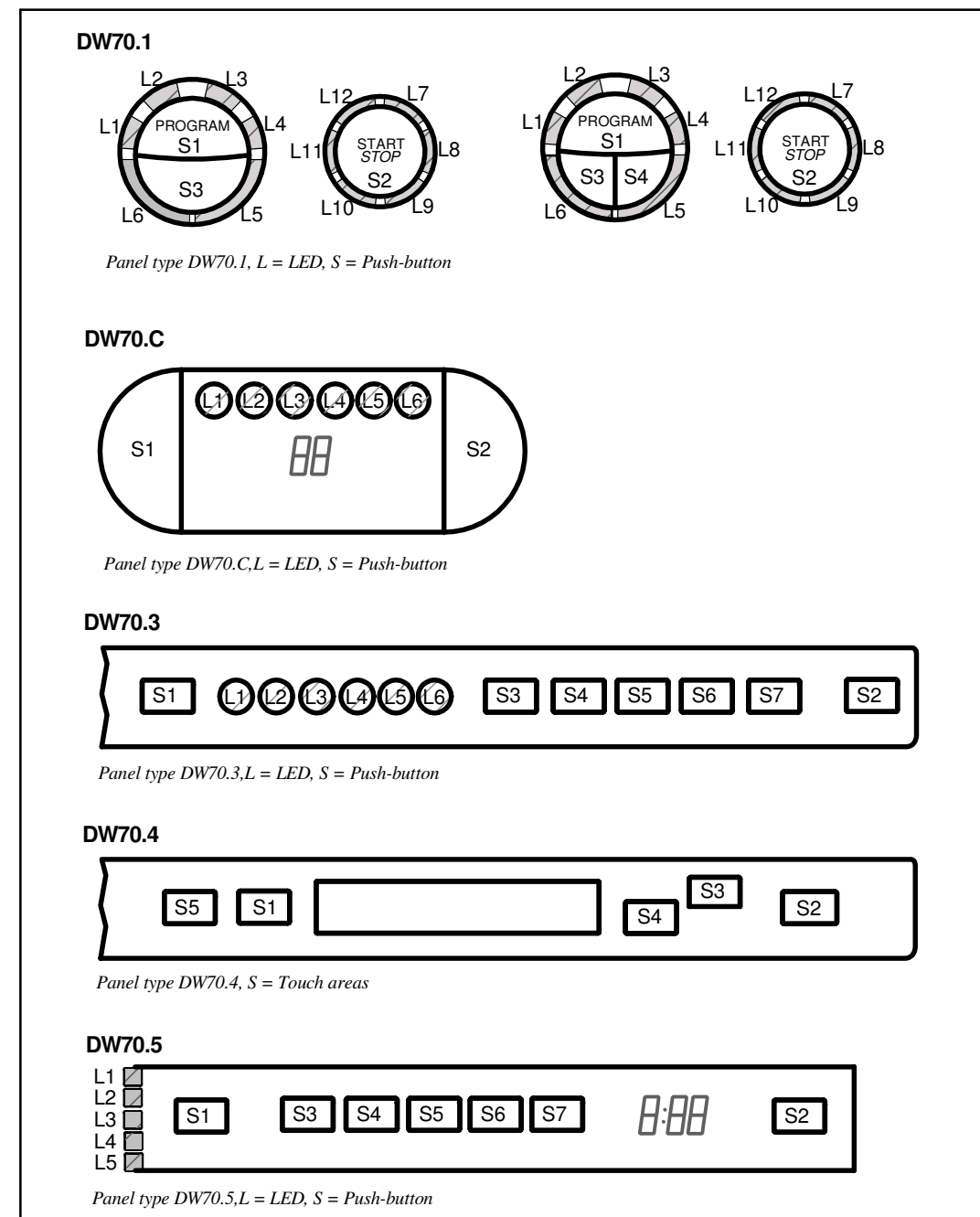


Control panel and related parts

ASKO, D5253 XXL TH US - SS (DW70.3)

| Pos | Spare part No. | Description | Qty | Comment |
|-----|----------------|--------------------------------|--------|---------|
| 601 | 8084001-UL | PANEL DW90 INTEGRATED LOCK UL4 | 1 Pc's | |
| 602 | 8082898 | PROG.INFO.REPL.BY 8091441 | 1 Pc's | |
| 603 | 8082897-81 | LENS ASKO D5253 (70.3) GRAPHIC | 1 Pc's | |
| 604 | 8074277 | SPRING MAIN SWITCH | 1 Pc's | |
| 607 | 8801435 | CONT.UNIT DW70.3 INTERVAL FAN | 1 Pc's | |
| 609 | 8073782 | MAIN PUSH SWITCH | 1 Pc's | |
| 610 | 8079517 | CABLE SET THERMISTOR UL4 | 1 Pc's | |
| 611 | 8078071 | CABLESET DIVERTER VALVE UL4 | 1 Pc's | |
| 614 | 8078068 | CABLE SET CI.PUMP IN.VALVE UL4 | 1 Pc's | |
| 616 | 8078064 | CABLE SET FLOW PRESS. TURB.UL4 | 1 Pc's | |
| 618 | 8078070 | CABLE SET POWER UL4 | 1 Pc's | |
| 620 | 8075730 | Cable Set Fan | 1 Pc's | |
| 622 | 8078063 | CABLE SET DRAIN UL4 | 1 Pc's | |
| 629 | 8081633-81 | PUSHB. MAINSW. DW70.3 GRAP UL4 | 1 Pc's | |
| 644 | 8073670 | Lock Complete Integrated | 1 Pc's | |
| 651 | 8073836 | MICROSWITCH DOOR | 0 Pc's | |
| 654 | 8081812-81 | PUSHBUTTONS DW70.3 | 1 Pc's | |
| 671 | 8083455 | SPACER PUSH BUTTONS DW70.3 | 1 Pc's | |

Displays



TOTAL RESET

TURN OFF MAIN SWITCH
 WAIT FOR AT LEAST 5 SECS
 HOLD PROGRAM BUTTON (S1), FOR DW70.4 HOLD PROGRAM BUTTON (S1)
 AND NAVIGATION BUTTON (S4).
 TURN ON MAIN SWITCH
 RELEASE PROGRAM BUTTON (S1), FOR DW70.4 RELEASE PROGRAM BUTTON (S1)
 AND NAVIGATION BUTTON (S4).

SERVICE MENU

TURN OFF MAIN SWITCH
 WAIT FOR AT LEAST 5 SECS
 HOLD PROGRAM AND START BUTTONS (S1 & S2)
 TURN ON MAIN SWITCH
 RELEASE PROGRAM AND START BUTTONS (S1 & S2)

VARIANT SETTING (NOT DW70.4)

HOLD PROGRAM AND START BUTTONS (S1 & S2)
 TURN ON MAIN SWITCH
 RELEASE PROGRAM AND START BUTTONS
 PRESS START (S2) 3 TIMES WITHIN 5 SECS
 SELECT VARIANT BY START BUTTON (S1) AND
 CONFIRM BY START BUTTON (S2)

COMPONENT TEST:

First enter Service menu.

DW70.1, DW70.3, DW70.5 and DW70.C

Component test:

Press the Program button (S1) and index through the following components:

1. Inlet valve and mix valve (only machines with water softener)
2. Inlet valve
3. Salt valve (only machines with water softener)
4. Detergent and surfactant dispenser
5. Circulation pump
6. Heating element and circulation pump (Max 75°C)
7. Fans
8. Drain pump

DW70.4

First enter service menu.

Go to service menu step 2, Diagnostics, by pressing S4

Press (S3) to activate the following components:

1. Valve (Inlet valve and mix valve (only machines with water softener), display flowsensor value)
2. Valve (Inlet valve, display flowsensor value)
3. Salt (Salt valve, only machines with water softener)
4. Disp (Detergent and surfactant dispenser)
5. Circ (Circulation pump, display shows turbidity in Volts)
6. Heat (Heating element and circulation pump (Max 75°C))
7. Fans (display shows humidity sensor value)
8. Drain (Drain pump, display shows pressure sensor reading; 0.5-3.5 VDC)

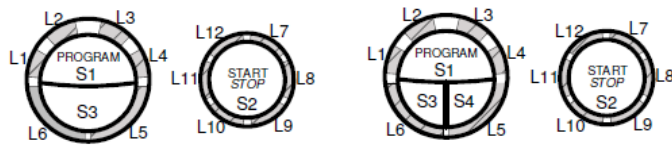
CIRCUIT DIAGRAM DW70.1, .3, .4, .5, .C

80 796 55 - 01

This document must not be copied without our written permission, and the contents thereof must not be imparted to a third party nor be used for any unauthorized purpose. Contravention will be prosecuted.
 Asko Appliances AB

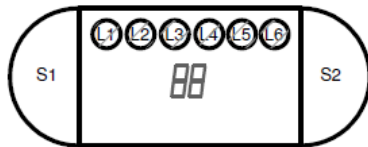
Displayer

DW70.1



Paneltyp DW70.1, L=LED, S= Tryckknapp

DW70.C



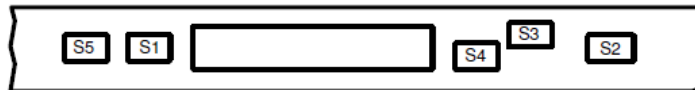
Paneltyp DW70.C, L=LED, S= Tryckknapp

DW70.3



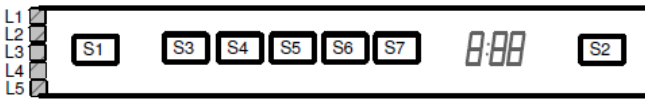
Paneltyp DW70.3 L=LED, S= Tryckknapp

DW70.4



Paneltyp DW70.4, S = Tryckområde

DW70.5



Paneltyp DW70.5 L=LED, S= Tryckknapp

Återställning

- Stäng av huvudströmbrytaren.
- Vänta i åtminstone 5 sekunder.
- Håll nere programknappen (S1) (för DW70.4 håll nere programknappen (S1) och navigationsknappen (S4)).
- Slå på huvudströmbrytaren (S1).
- Släpp programknappen (S1) (för DW70.4, släpp programknappen (S1) och navigationsknappen (S4)).

Servicemeny

- Stäng av huvudströmbrytaren.
- Vänta i åtminstone 5 sekunder.
- Håll program- och startknappen (S1 & S2) intryckta.
- Slå på huvudströmbrytaren.
- Släpp program- och startknappen (S1 & S2).

Variantinställning (ej DW70.4)

- Håll program- och startknapp (S1 & S2) intryckta.
- Slå på huvudströmbrytaren
- Släpp program- och startknapparna (S1 & S2)
- Tryck på startknappen (S2) 3 gånger inom 5 sekunder.
- Välj variant genom att trycka på startknappen (S2) och bekräfta ditt val genom att trycka på programknappen (S1)

Komponenttest:

Gå först in i Servicemenyn.

DW70.1, DW70.3, DW70.5 och DW70.C

Komponenttest:

Tryck på knappen (S1) och stega igenom följande komponenter:

1. Inloppsventil och mixventil (endast maskiner med avhårdare)
2. Inloppsventil
3. Saltventil (endast maskiner med avhårdare)
4. Diskmedel och sköljmedelsdoserare
5. Cirkulationspump
6. Värmeelement och cirkulationspump (Max 75°C)
7. Fläktar
8. Avloppspump

DW70.4

Gå först in i servicemenyn.

Gå först till servicemenyn steg 2 genom att trycka på knappen (S4)

Tryck på knappen (S3) för att aktivera följande komponenter.

1. Ventil (Inloppsventil och mixventil (endast maskiner med avhårdare) display visar intagen vattenmängd i antal pulser; pulsmätare är placerad i luftavbrottet).
2. Ventil (Inloppsventil, visar trycksensorvärde)
3. Salt (Saltventil, endast maskiner med avhårdare)
4. Behållare (Disk- och vätmedelsdoserare)
5. Cirkulation (Cirkulationspump)
6. Värme (Värmeelement och cirkulationspump (Max 75 °C))
7. Fläktar (Displayen visar fuktensorvärde)
8. Avloppspump