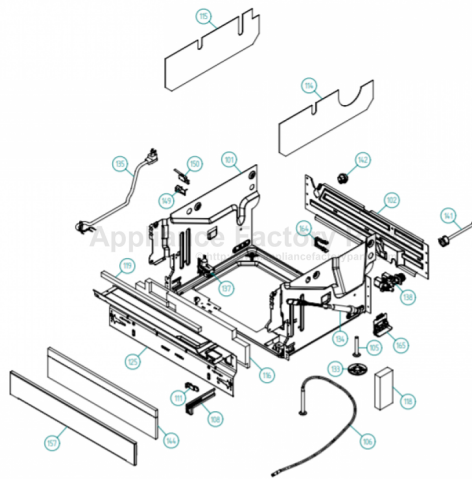


This Owner's Manual is provided and hosted by [Appliance Factory Parts](#).



ASKO D5893XXLFI Owner's Manual

[Shop genuine replacement parts for ASKO D5893XXLFI](#)



[Find Your ASKO Dishwasher Parts - Select From 209 Models](#)

----- Manual continues below -----



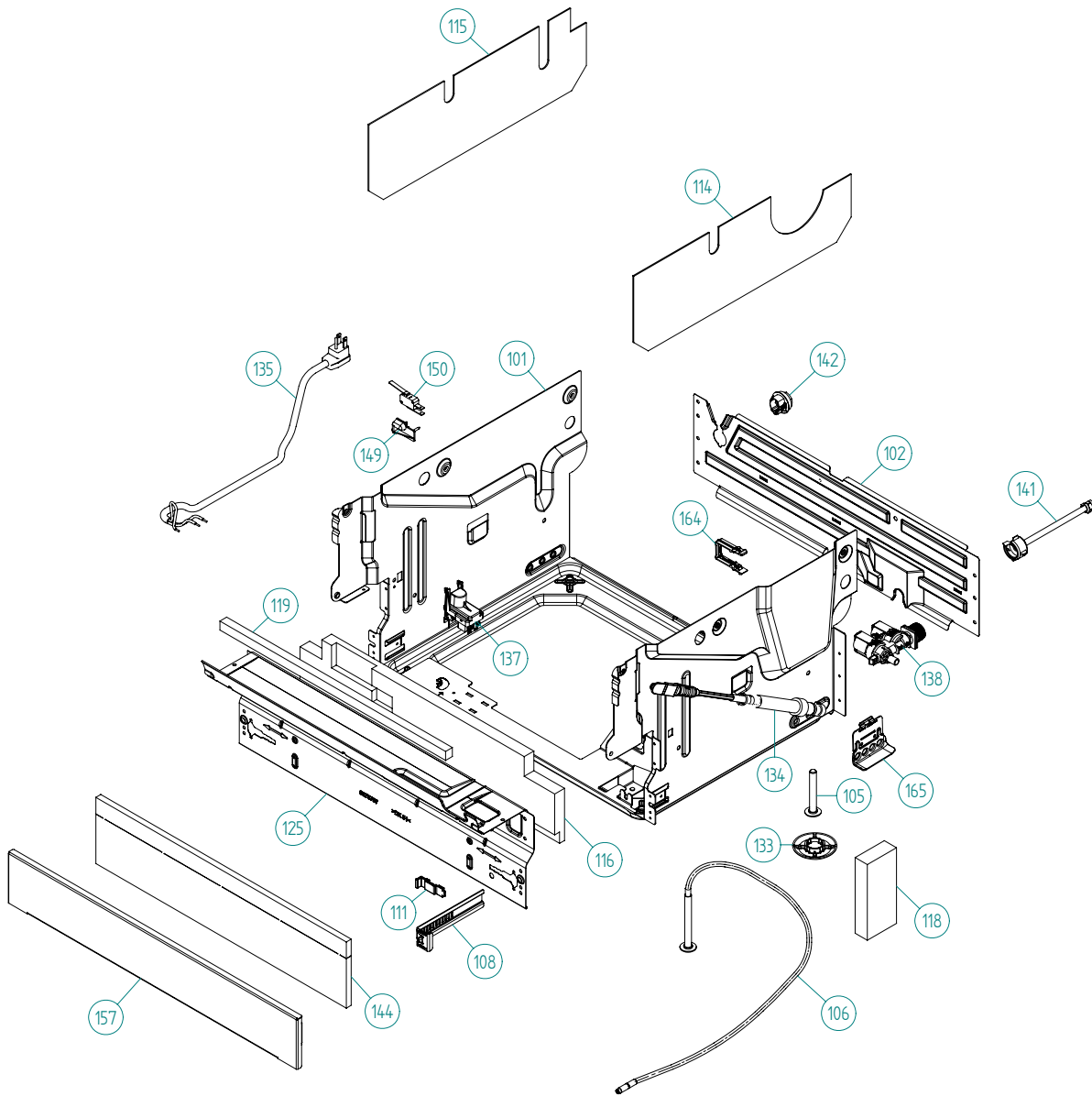
Spare Parts Catalogue

ASKO Dishwashers \ ASKO 5000 XXL Series
Type: DW70.4
Model: D5893 XXL FI US Titanium FI

Prod. No: 1075893151
April 24th 2012

ASKO Appliances Inc.

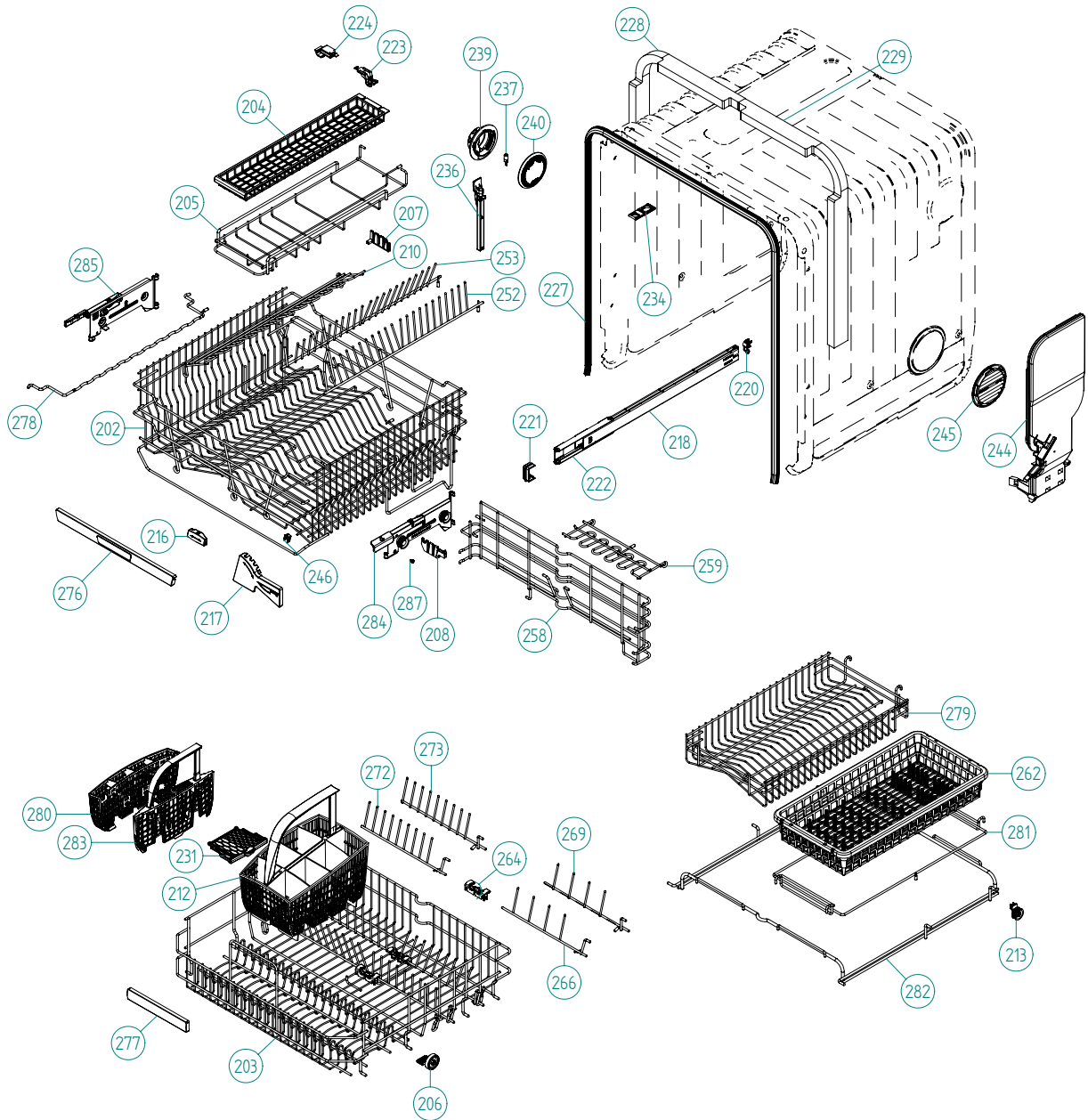
4001 E Plano Parkway #1004001 E Plano Parkway #100
Plano, Texas 75074



Base and related parts

ASKO, D5893 XXL FI US - Titanium FI (DW70.4)

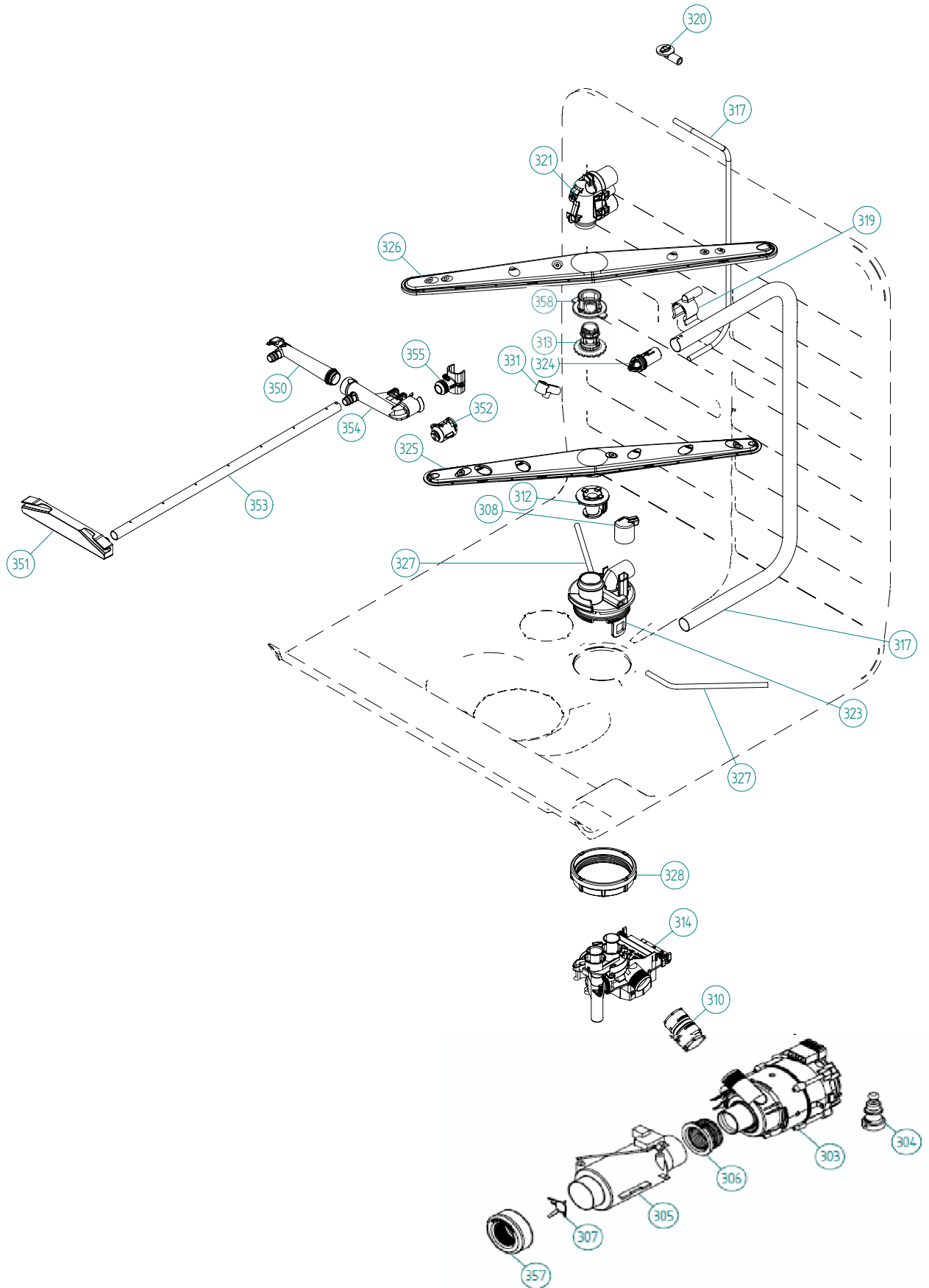
| Pos | Spare part No. | Description | Qty | Comment |
|-------|----------------|----------------------------------|--------|---------|
| 101 | 8801387 | BOTTOM OUTER COMPL. | 1 Pc's | |
| 101-a | 8901104 | Screw 20 Torx Machine | 2 Pc's | |
| 101-b | 8901110 | Screw w/ORing DW 05/06 25T | 4 Pc's | |
| 102 | 8078006 | REAR PANEL | 1 Pc's | |
| 105 | 8074228 | Leveling Foot M10X75 T30 8.8 FZB | 2 Pc's | |
| 106 | 8082222 | FOOT ADJUSTABLE FROM FRONT CPL | 1 Pc's | |
| 108 | 8073480 | Toe Kick bracket Right & Left | 2 Pc's | |
| 111 | 8073481-49 | Toe Kick Bracket Clip L-Grey | 2 Pc's | |
| 114 | 8078109 | SOUND ABSORP. SELF AD. RIGHT | 1 Pc's | |
| 115 | 8078108 | SOUND ABSORP. SELF AD. LEFT | 1 Pc's | |
| 116 | 8078114 | SOUND ABSORBENT GUARD PLATE | 1 Pc's | |
| 118 | 8078112 | SOUND AB.BLOCK BOTTOM OUTER | 2 Pc's | |
| 119 | 8078122 | SOUND ABSORBTION PROFILE | 1 Pc's | |
| 125 | 8078007 | GUARD PLATE FLANGED | 1 Pc's | |
| 133 | 8051957 | Glide Foot | 3 Pc's | |
| 134 | 8079530 | Door Spring-DW70-Blue | 1 Pc's | |
| 134 | 8079529 | Door Spring-DW70-Red | 1 Pc's | |
| 135 | 8083262 | CORD SET 15A AMERICA | 1 Pc's | |
| 135 | 8079046 | CORD SET AMERICA | 1 Pc's | |
| 136-a | 8902131 | Screw | 1 Pc's | |
| 137 | 8083041 | Terminal Block w/RFI DW70 | 1 Pc's | |
| 137-a | 8901097 | Screw Terminal | 1 Pc's | |
| 138 | 8801374 | KIT INL.VALVE/LOCKARM SEC.120V | 1 Pc's | |
| 138-a | 8079597 | LOCK ARM INLET VALVE | 1 Pc's | |
| 141 | 8079522 | PEX Inlet hose DW | 1 Pc's | |
| 142 | 8006948 | Grommet | 1 Pc's | |
| 144 | 8074585 | Felt Kick Plate 05 | 1 Pc's | |
| 149 | 8054907 | BRACKET LAMP SWITCH | 1 Pc's | |
| 149-a | 8902087 | Screw Plastic Housing 20 Torx | 1 Pc's | |
| 150 | 8073834 | MICROSWITCH LIGHTING | 1 Pc's | |
| 157 | 8073566-81 | Toe Kick Mettalic | 1 Pc's | |
| 162 | 8079832 | CABLE HOLDER SRC-8-01 | 1 Pc's | |
| 163 | 8078113 | SOUND ABSORBTION REARPANEL | 1 Pc's | |
| 164 | 8079597 | LOCK ARM INLET VALVE | 1 Pc's | |
| 165 | 8078013 | DOOR SPRING HOLDER | 1 Pc's | |
| 165-a | 8902362 | SCREW RTK ST 4,2X9,5 FZB WAX. | 1 Pc's | |



Baskets and related parts

ASKO, D5893 XXL FI US - Titanium FI (DW70.4)

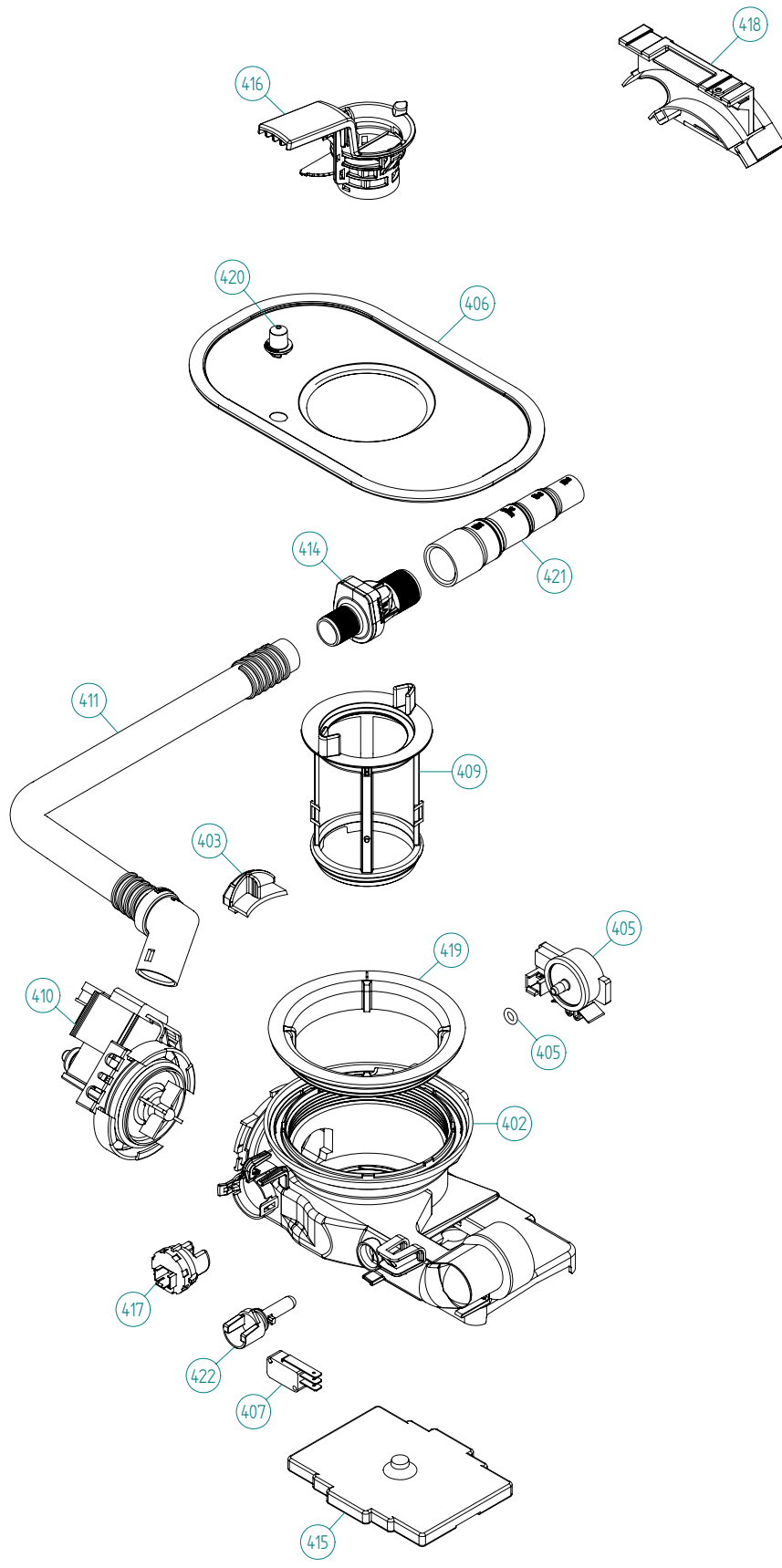
| Pos | Spare part No. | Description | Qty | Comment |
|-------|----------------|--------------------------------|--------|------------------|
| 201 | 8057056 | - | 1 Pc's | Not a spare part |
| 202 | 8801358-36 | UPPER BASKET EXCL. COMPL. H&L | 1 Pc's | |
| 203 | 8801316-36 | LOWER BASKET EXCL D.GREY 07 | 1 Pc's | New design |
| 204 | 8053376-77 | Long Rack Silverware Upper | 1 Pc's | |
| 205 | 8057058-36 | Knife Basket D-Grey | 1 Pc's | |
| 206 | 8079257-77 | WHEEL FOR LOW DISHW BASKET CPL | 8 Pc's | |
| 207 | 8057505-77 | Knife Holder DW 05/06 | 1 Pc's | |
| 208 | 8071214-77 | Knife Holder 05/06 DW | 2 Pc's | |
| 210 | 8071337-36 | Cup Shelf Wine Glass 05/06 DW | 1 Pc's | |
| 212 | 8801396-77 | Cutlery Bskt for Stnd Tines | 1 Pc's | |
| 213 | 8058498-77 | Upper Basket Wheel | 4 Pc's | |
| 216 | 8072553-77 | BRACKET PIN ROW UPPER BASKET | 1 Pc's | |
| 217 | 8072554-77 | KNIFE GUARD | 1 Pc's | |
| 218 | 8801350 | DW Upper Basket Guide Rail Kit | 2 Pc's | |
| 220 | 8057978-77 | DW Rail Stop - Back Grey | 2 Pc's | |
| 221 | 8088703-77 | BASKET STOP | 2 Pc's | |
| 222 | 8801349-77 | KIT BALL HOLDER INCL. BALLS | 1 Pc's | |
| 223 | 8057502 | Clip Upper Knife Rack DW | 1 Pc's | |
| 224 | 8058453 | Clip Knife Basket 1800s DW | 1 Pc's | |
| 225 | 8057978-77 | DW Rail Stop - Back Grey | 2 Pc's | |
| 227 | 8057489-F | DOOR STRIP XXL DW70 | 1 Pc's | |
| 228 | 8078116 | SEALING STRIP CASING FOAM LEFT | 1 Pc's | |
| 229 | 8078117 | SEALING STRIP CASING FOAM RIGH | 1 Pc's | |
| 231 | 8079251-77 | DOOR CUTLERYBASKET UL4 | 1 Pc's | |
| 234 | 8070649 | Lock Hitch Int | 1 Pc's | |
| 234-a | 8070654 | Lock Washer Int | 1 Pc's | |
| 234-b | 8901104 | Screw 20 Torx Machine | 1 Pc's | |
| 236 | 8076590 | CABLE BAR LONG | 1 Pc's | |
| 237 | 8073830 | Halogen Lamp | 1 Pc's | |
| 239 | 8072426 | Lamp Guard | 1 Pc's | |
| 239-a | 8901765 | ORing det Comp 03/04 DW | 1 Pc's | |
| 240 | 8072425 | Lamp Chimney | 1 Pc's | |
| 244 | 8078300 | AIRBREAK STD. DW70 UL4 | 1 Pc's | |
| 245 | 8057536-77 | LOCKRING AIREBREAKER GREY | 1 Pc's | |
| 246 | 8075350 | Clip for Knife Guard | 1 Pc's | |
| 252 | 8072552-36 | PLATERACK RIGHT U-BASKET | 1 Pc's | |
| 253 | 8072551-36 | PLATERACK LEFT U-BASKET | 1 Pc's | |
| 258 | 8801333-36 | WINEGLASS SHELF LOWER BASKET | 1 Pc's | |
| 259 | 8076619-36 | wine glass cup shelf divider | 2 Pc's | |
| 264 | 8076632-77 | Holder | 3 Pc's | |
| 266 | 8079130-36 | PlateRack short/wide R-FT | 1 Pc's | |
| 269 | 8079131-36 | PlateRack short/wide R-BK | 1 Pc's | |
| 272 | 8079123-36 | PlateRack short/narrow L-FT | 1 Pc's | |
| 273 | 8079124-36 | PlateRack short/narrow L-BK | 1 Pc's | |
| 276 | 8801330-77 | HANDLE U-BASKET COMPL. ASKO | 1 Pc's | |
| 277 | 8801332-77 | HANDLE LOWER BASKET COMPL. | 1 Pc's | |
| 278 | 8079144-36 | GLASS SUPPORT D-GREY | 1 Pc's | |
| 278 | 8072764-36 | GLASS SUPPORT D-GREY | 1 Pc's | |
| 279 | 8079255-36 | INSERT BOWL BASKET DW70 | 1 Pc's | |
| 280 | 8079589-77 | MINI BASKET | 2 Pc's | |
| 282 | 8079253-36 | MIDDLE BASKET DW70 | 1 Pc's | |
| 283 | 8079590-77 | HANDLE MINI BASKET | 1 Pc's | |
| 284 | 8079138 | Basket Adj Bracket Right | 1 Pc's | |
| 285 | 8079139 | Basket Adj Bracket Left | 1 Pc's | |
| 287 | 8083397 | LOCKING PLUG F ADJUST. DEVICE | 2 Pc's | |



Wash System

ASKO, D5893 XXL FI US - Titanium FI (DW70.4)

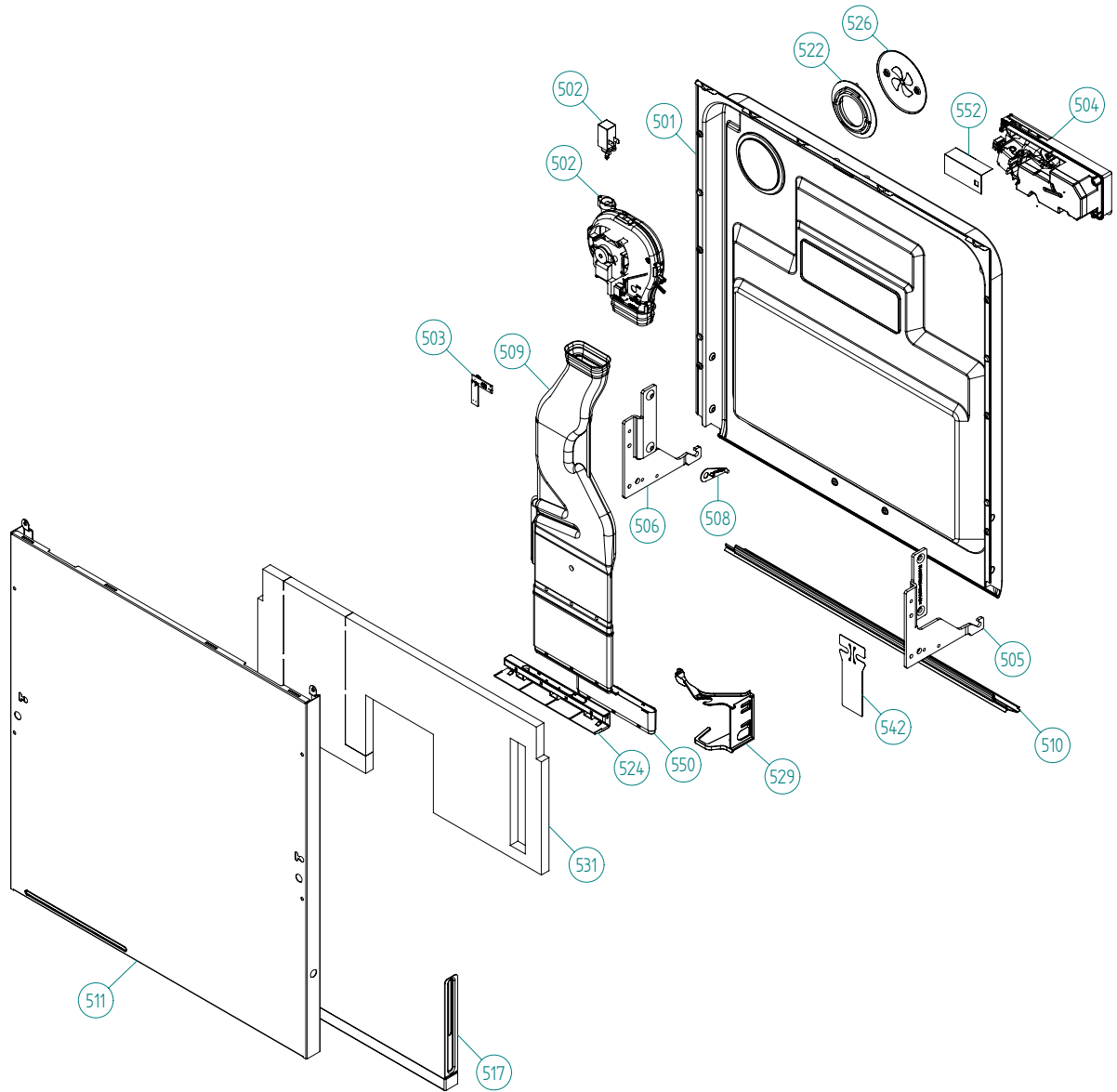
| Pos | Spare part No. | Description | Qty | Comment |
|-------|----------------|--------------------------------|--------|--------------------------------------|
| 301 | 8078001 | - | 1 Pc's | Not a spare part |
| 303 | 8078082 | CIRC.PUMP 120V 60HZ | 1 Pc's | |
| 304 | 8075130 | Rubber Damper Circ Pump | 1 Pc's | |
| 305 | 8801463 | HEATER W.INSERT 1200W120V DW70 | 1 Pc's | |
| 306 | 8079531 | SEALING HEATER DW70 UL4 | 2 Pc's | Only 1 pc from 2009-06-11 |
| 307 | 8079575 | INSERT FOR HEATER | 1 Pc's | |
| 308 | 8073385-77 | Cup Drainage Gray | 1 Pc's | |
| 310 | 8801409 | Hose Circ Pump | 1 Pc's | |
| 310-a | 8056491 | HOSE CLIP 30.1-708 | 2 Pc's | |
| 312 | 8801270 | Spray Arm Bearing Kit | 1 Pc's | |
| 313 | 8079108-77 | SPRAYARM BEARING H&L U.BASKET | 1 Pc's | |
| 314 | 8078085 | WATER DIVERTER VALVE 120V 60HZ | 1 Pc's | |
| 314-a | 8073003 | O-ring | 2 Pc's | |
| 317 | 8079145 | SPRAY PIPE KNIFE SPRAYER H&L | 1 Pc's | |
| 317 | 8079112-EDH | SPRAYTUBE ADJ. U-BASK XXL 8,5 | 1 Pc's | |
| 319 | 8057504-77 | SPRAY PIPE GROMMET LOWER GREY | 1 Pc's | |
| 320 | 8057503-77 | Spray Pipe Grommet Upper Gray | 1 Pc's | |
| 321 | 8801359 | SPRAYTOWER COMPL H&L BASKET | 1 Pc's | |
| 323 | 8081911-LL-77 | SPRAYTOWER L FOR 2 NOZZLE UL4 | 1 Pc's | |
| 324 | 8079113-77 | GUIDE SPRAYTUBE ADJ BASKET | 1 Pc's | |
| 325 | 8072891 | Spray Arm Lower Complete | 1 Pc's | |
| 326 | 8079111 | SPRAYARM CPL H&L BASKET | 1 Pc's | |
| 327 | 8073381 | Tube Pot Rinse | 1 Pc's | |
| 327 | 8079147 | POT RINSE TUBE | 1 Pc's | |
| 327-a | 8902085 | Screw 20T for Plastic | 2 Pc's | |
| 328 | 8071607 | Locking Spray Pipe Bearing | 1 Pc's | |
| 331 | 8072543-77 | Spray Nozzle | 2 Pc's | For part no 8073381 and 8076902-L-77 |
| 350 | 8079268-77 | TERMINAL CONN.SPRAY TUBE M.B | 1 Pc's | |
| 351 | 8079265-77 | SPRAY TUBE HOLDER MIDDLEBASKET | 1 Pc's | |
| 352 | 8079576-77 | Cap Spray Tube Inlet Mid/Bask | 1 Pc's | |
| 353 | 8080860 | SPRAY PIPE MIDDLE BASKET | 2 Pc's | |
| 354 | 8079266-77 | CONNECTION SPRAY PIPE BASKET | 1 Pc's | |
| 355 | 8079267-77 | SPRAY PIPE GROMMET MIDDLE BASK | 1 Pc's | |
| 357 | 8083603 | SEALING HEATER BOTTOM SUMP | 1 Pc's | |
| 358 | 8079261-77 | INSERT SPRAYARM BEAR.H&L BASK. | 1 Pc's | |



Bottom well and related parts

ASKO, D5893 XXL FI US - Titanium FI (DW70.4)

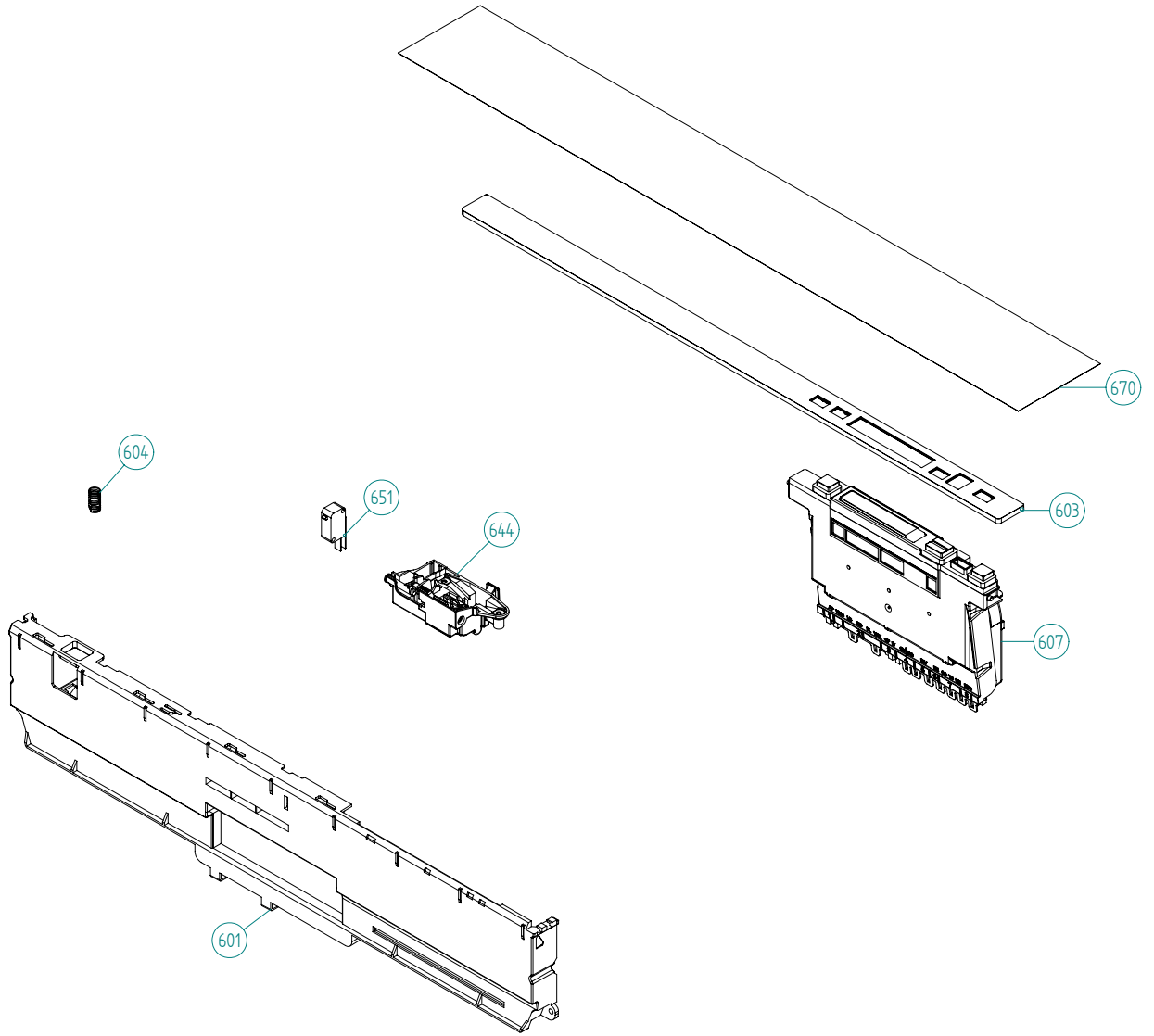
| Pos | Spare part No. | Description | Qty | Comment |
|------------|-----------------------|--------------------------------|------------|----------------|
| 402 | 8084692 | BOTTOM WELL 2 SENSOR UL4 | 1 Pc's | |
| 402 | 8801452 | KIT BOTTOM W.NO RET.VALVE 2SEN | 1 Pc's | |
| 402-a | 8073002 | ORing | 1 Pc's | |
| 403 | 8078033 | Rinse Cap Bottom Well - Yellow | 1 Pc's | |
| 405 | 8073839 | Pressure Sensor | 1 Pc's | |
| 405-a | 8074040 | O-Ring-Press Sensor | 1 Pc's | |
| 406 | 8074364 | Strainer DW20 | 1 Pc's | |
| 407 | 8073835 | Microswitch Float | 1 Pc's | |
| 409 | 8078038-77 | Pipe Filter DW70 | 1 Pc's | |
| 410 | 8078089 | Drain Pump 120V 60Hz | 1 Pc's | |
| 411 | 8079693 | Outlet Hose w/o Return Valve | 1 Pc's | |
| 411 | 8083478 | OUTLET HOSE HARD END CUFF US | 1 Pc's | |
| 411-a | 8901768 | O-RING 32,3X3 (BD) | 1 Pc's | |
| 414 | 8801248 | Check Valve Kit | 1 Pc's | |
| 414-a | 8052239 | Hose Clamp | 1 Pc's | |
| 414-b | 8053642 | Hose Clamp | 1 Pc's | |
| 415 | 8078025 | Float | 1 Pc's | |
| 416 | 8078039-77 | Strainer Basket Grey | 1 Pc's | |
| 417 | 8081321 | TURBIDITY SENSOR DW20/70 | 1 Pc's | |
| 418 | 8072528-77 | Holder Outlet Hose | 1 Pc's | |
| 418-a | 8053642 | Hose Clamp | 1 Pc's | |
| 418-b | 8052239 | Hose Clamp | 1 Pc's | |
| 418-c | 33700450 | Cable Strip | 1 Pc's | |
| 418-d | 8902072 | SCREW PT KB40X10 WN1442 GALV | 1 Pc's | |
| 419 | 8072848 | Lockring Bottom Well | 1 Pc's | |
| 420 | 8074760-77 | Ventilator | 1 Pc's | |
| 421 | 8075321 | End Cuff | 1 Pc's | |
| 422 | 8078096 | Thermistor | 1 Pc's | |
| 426 | 8078024 | SEALING NON RETURN VALVE | 1 Pc's | |
| 427 | 8901768 | O-RING 32,3X3 (BD) | 1 Pc's | |



Inner door, panel and related parts

ASKO, D5893 XXL FI US - Titanium FI (DW70.4)

| Pos | Spare part No. | Description | Qty | Comment |
|-------|------------------------------|--------------------------------|--------|---------|
| 501 | 8801381 | Inner door w/fan DW70 | 1 Pc's | |
| 501-a | 8900646 | Screw 20 Torx SS | 6 Pc's | |
| 501-b | 8902121 | SCREW A2-MKFT 5X10 | 4 Pc's | |
| 502 | 8073852 | Fan Compl 120V incl Sensor | 1 Pc's | |
| 502-a | 8058501 | ORing Turbo Fan Dry 05/06 DW | 1 Pc's | |
| 502-b | 8801438 | KIT WITH NEW WAXMOTOR DW | 1 Pc's | |
| 503 | 8080100 | HUMIDITY SENSOR ROHS *ESD* UL4 | 1 Pc's | |
| 504 | 8801343-77 | KIT Combi Dispenser 120V | 1 Pc's | |
| 504-a | 8071918 | Seal Det Comp Lid | 1 Pc's | |
| 504-b | 8071917 | CAP RINSE AGENT | 1 Pc's | |
| 504-c | 8071918 | Detergent Lid Complete | 1 Pc's | |
| 504-d | 8072288 | Sealing Strip Combi Disp. | 1 Pc's | |
| 504-f | 8902087 | Screw Plastic Housing 20 Torx | 6 Pc's | |
| 505 | 8801458 | HINGE RIGHT COMPL. DW70 | 1 Pc's | |
| 506 | 8801459 | HINGE LEFT COMPL. DW70 | 1 Pc's | |
| 507 | 8057530 | Screw hinge 05 | 2 Pc's | |
| 507-a | 33500262 | Nut Term Block | 2 Pc's | |
| 508 | Repl by 8801458 & 8801459 | Slide washer hinge bearing 05 | 2 Pc's | |
| 509 | 8078040 | Air Channel DW70 | 1 Pc's | |
| 510 | 8801294 | DOOR SEAL LOWER W.CORNER GUARD | 1 Pc's | |
| 511 | 8078017-PES | DOOR OUTER HIGH INT ADJUST XXL | 1 Pc's | |
| 511 | 8078017-PES-81 | Outer door-high Int adjust XXL | 1 Pc's | |
| 511-a | 8900646 | Screw 20 Torx SS | 6 Pc's | |
| 517 | 8074012-81 | Adj Frame Air Channel | 1 Pc's | |
| 517-a | 8902133 | Screw | 2 Pc's | |
| 522 | 8089401 | LOCKKING RING 2 FAN HOUSE UL4 | 1 Pc's | |
| 522-a | 8902085 | Screw 20T for Plastic | 2 Pc's | |
| 523 | 8079546 | INTERM.STAY XL FI EU | 1 Pc's | |
| 524 | 8083978-33 | NOZZLE AIR DUCT-FI Units | 1 Pc's | |
| 526 | 8058484 | SS Coverplate Turbo Fan DW | 1 Pc's | |
| 526-a | 8902085 | Screw 20T for Plastic | 2 Pc's | |
| 529 | 8074278 | Bracket for harness | 1 Pc's | |
| 531 | 8074258 | Sound Absorbtion Outer Door | 1 Pc's | |
| 542 | 8076966 | COVER, CABLES | 1 Pc's | |
| 550 | 8079558 | AIR CANNEL EXTENSION | 1 Pc's | |
| 552 | 8083021 | COVER COMBI DISPENSER | 1 Pc's | |



Control panel and related parts

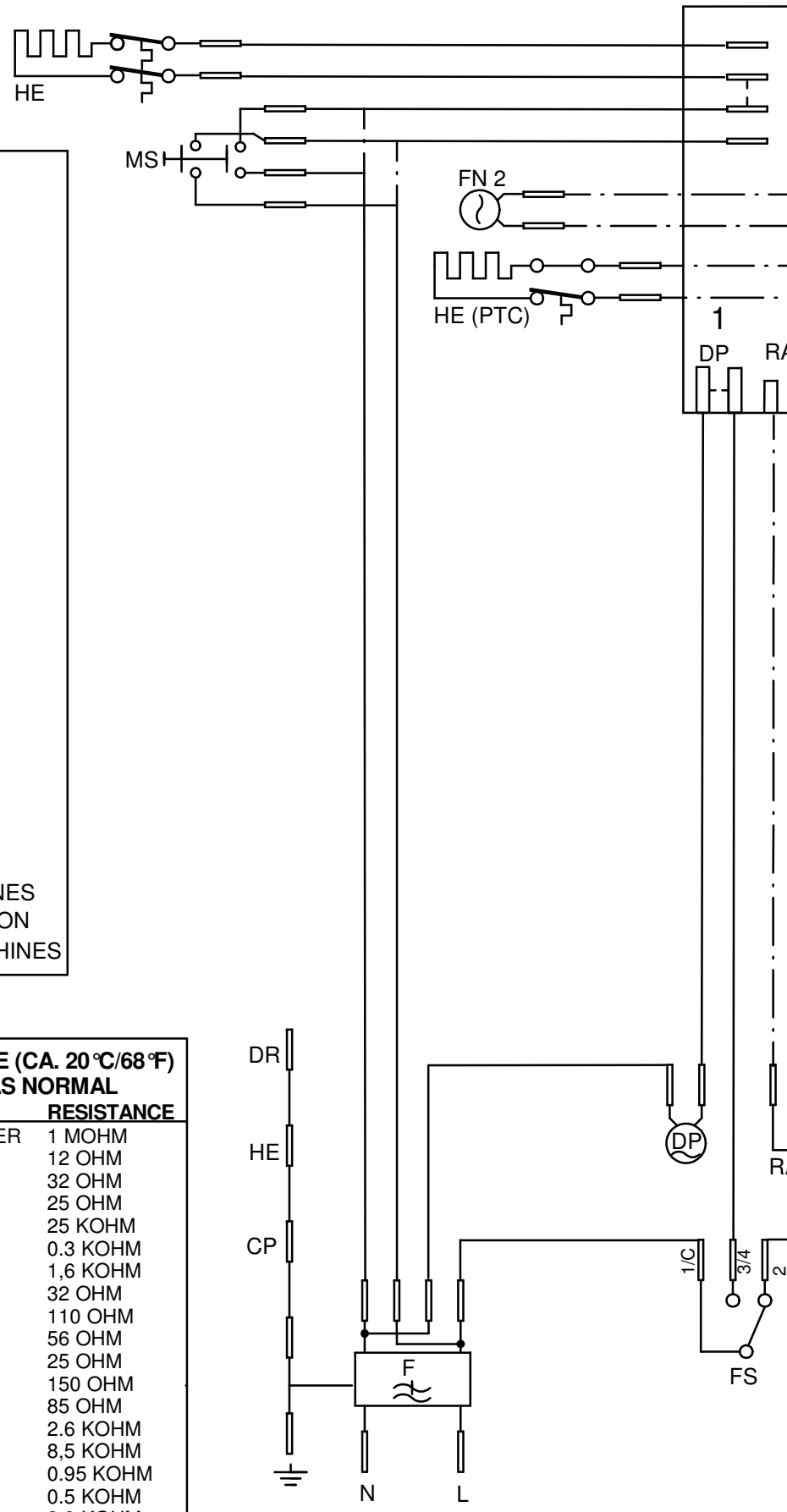
ASKO, D5893 XXL FI US - Titanium FI (DW70.4)

| Pos | Spare part No. | Description | Qty | Comment |
|-----|----------------|---------------------------------|--------|---------|
| 601 | 8084001-UL | PANEL DW90 INTEGRATED LOCK UL4 | 1 Pc's | |
| 603 | 8088063 | Decor Lens D5893 DW70.4 GRAPHIC | 1 Pc's | |
| 604 | 8074277 | SPRING MAIN SWITCH | 1 Pc's | |
| 607 | 8801368 | CONTROL.UNIT COMPL. DW70.4 USA | 1 Pc's | |
| 610 | 8079517 | CABLE SET THERMISTOR UL4 | 1 Pc's | |
| 611 | 8078071 | CABLESET DIVERTER VALVE UL4 | 1 Pc's | |
| 611 | 8075739 | cablE set humidity sensor | 1 Pc's | |
| 614 | 8078068 | CABLE SET CI.PUMP IN.VALVE UL4 | 1 Pc's | |
| 616 | 8078064 | CABLE SET FLOW PRESS. TURB.UL4 | 1 Pc's | |
| 618 | 8079511 | CABLESET POWER TOUCH UL4 | 1 Pc's | |
| 620 | 8075730 | Cable Set Fan | 1 Pc's | |
| 622 | 8078063 | CABLE SET DRAIN UL4 | 1 Pc's | |
| 644 | 8073670 | Lock Complete Integrated | 1 Pc's | |
| 651 | 8073836 | MICROSWITCH DOOR | 0 Pc's | |
| 670 | 8089279 | Black Reflector Strip DW70.4 | 1 Pc's | |

- CD: COMBI DISPENSER
 - CP: CIRCULATION PUMP
 - DIV: WATER DIVERTER VALVE
 - DP: DRAIN PUMP
 - DR: DOOR
 - DS: DOOR SWITCH
 - F: FILTER
 - FM: FLOW METER
 - FN 1: FAN DOOR
 - FN 2: FAN BOTTOM
 - FS: FLOAT SWITCH
 - HE: HEATING ELEMENT
 - HE (PTC): HEATING ELEMENT PTC
 - HL: HALOGEN LAMP
 - HS: HUMIDITY SENSOR
 - IS: ILLUM. SWITCH
 - IV: INLET VALVE
 - I2C: I2C
 - MS: MAIN SWITCH
 - MV: MIX VALVE
 - PS: PRESSURE SENSOR
 - RAS: RINSE AID SENSOR
 - SL: STATUS LIGHT
 - SS: SALT SENSOR
 - SV: SALT VALVE
 - TH: THERMISTOR
 - TS: TURBIDITY SENSOR
 - UART: UART
 - VAX: VAX ACTUATOR
- WIRES IN ALL MACHINES
 - - - - - INTERNAL CONNECTION
 — . — WIRES IN SOME MACHINES

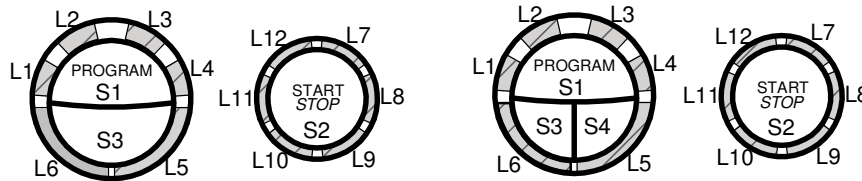
RESISTANCES AT ROOM TEMPERATURE (CA. 20 °C/68 °F)
VALUES WITH +/-10% ARE REGARDED AS NORMAL

| COMPONENT | RESISTANCE |
|---------------------------------------|------------|
| RADIO INTERFERENCE SUPPRESSION FILTER | 1 MOHM |
| HEATING ELEMENT 1200W 120V | 12 OHM |
| HEATING ELEMENT 1600W 230V | 32 OHM |
| HEATING ELEMENT 2040W 230V | 25 OHM |
| THERMISTOR | 25 KOHM |
| COMBINED DISPENSER 120V | 0.3 KOHM |
| COMBINED DISPENSER 230V | 1,6 KOHM |
| CIRCULATION PUMP 120V 60HZ | 32 OHM |
| CIRCULATION PUMP 230V 50HZ | 110 OHM |
| CIRCULATION PUMP 220V 60HZ | 56 OHM |
| DRAIN PUMP 120V 60HZ | 25 OHM |
| DRAIN PUMP 230V 50HZ | 150 OHM |
| DRAIN PUMP 230V 60HZ | 85 OHM |
| SPRAY ARM DIVIDER 120V 60HZ | 2.6 KOHM |
| SPRAY ARM DIVIDER 230V 50/60HZ | 8,5 KOHM |
| INLET VALVE SINGLE INCL. 120V | 0.95 KOHM |
| INLET VALVE SAFETY INCL. 120V | 0.5 KOHM |
| INLET VALVE SINGLE INCL. 230V | 3,9 KOHM |
| INLET VALVE SAFETY INCL. 230V | 2 KOHM |
| SALT VALVE 120V | 0,65 KOHM |
| MIX VALVE 120V | 0,65 KOHM |
| SALT VALVE 230V | 3 KOHM |
| MIX VALVE 230V | 2,3 KOHM |
| HALOGEN LAMP 5W 12V | <10 KOHM |
| WAX MOTOR | 1.1 KOHM |
| FAN MOTOR 120V | 0.18 KOHM |
| FAN MOTOR 230V | 0,85 KOHM |



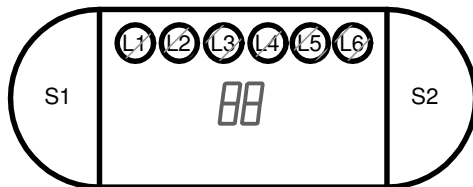
Displays

DW70.1



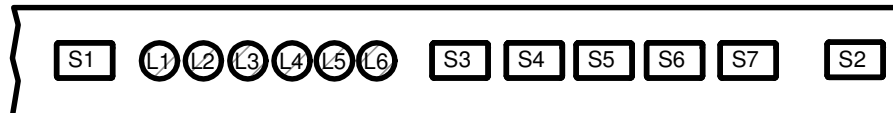
Panel type DW70.1, L = LED, S = Push-button

DW70.C



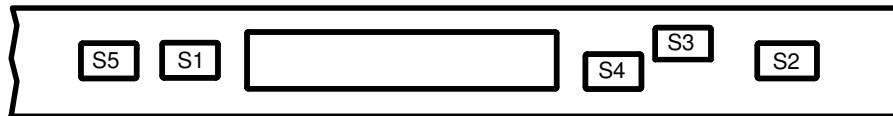
Panel type DW70.C, L = LED, S = Push-button

DW70.3



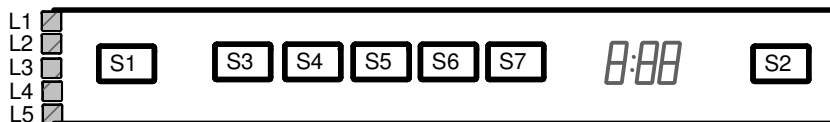
Panel type DW70.3, L = LED, S = Push-button

DW70.4



Panel type DW70.4, S = Touch areas

DW70.5



Panel type DW70.5, L = LED, S = Push-button

TOTAL RESET

TURN OFF MAIN SWITCH

WAIT FOR AT LEAST 5 SECS

HOLD PROGRAM BUTTON (S1), FOR DW70.4 HOLD PROGRAM BUTTON (S1)

AND NAVIGATION BUTTON (S4).

TURN ON MAIN SWITCH

RELEASE PROGRAM BUTTON (S1), FOR DW70.4 RELEASE PROGRAM BUTTON (S1)

AND NAVIGATION BUTTON (S4).

SERVICE MENU

TURN OFF MAIN SWITCH

WAIT FOR AT LEAST 5 SECS

HOLD PROGRAM AND START BUTTONS (S1 & S2)

TURN ON MAIN SWITCH

RELEASE PROGRAM AND START BUTTONS (S1 & S2)

VARIANT SETTING (NOT DW70.4)

HOLD PROGRAM AND START BUTTONS (S1 & S2)

TURN ON MAIN SWITCH

RELEASE PROGRAM AND START BUTTONS

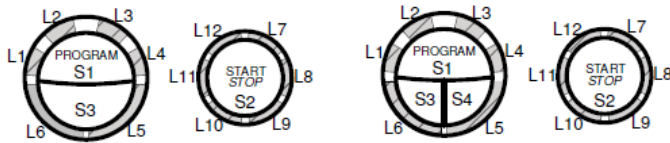
PRESS START (S2) 3 TIMES WITHIN 5 SECS

SELECT VARIANT BY START BUTTON (S1) AND

CONFIRM BY START BUTTON (S2)

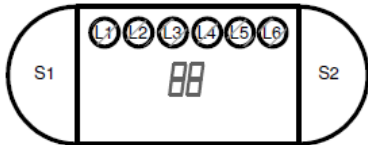
Displayer

DW70.1



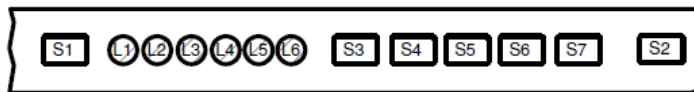
Paneltyp DW70.1, L=LED, S= Tryckknapp

DW70.C



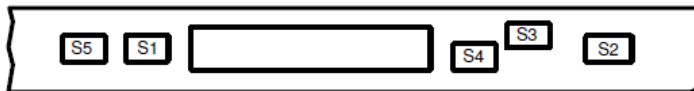
Paneltyp DW70.C, L=LED, S= Tryckknapp

DW70.3



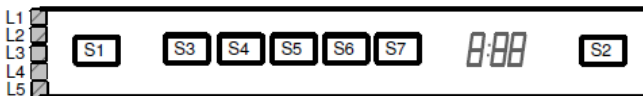
Paneltyp DW70.3 L=LED, S= Tryckknapp

DW70.4



Paneltyp DW70.4, S = Tryckområde

DW70.5



Paneltyp DW70.5 L=LED, S= Tryckknapp

Återställning

- Stäng av huvudströmbrytaren.
- Vänta i åtminstone 5 sekunder.
- Håll nere programknappen (S1) (för DW70.4 håll nere programknappen (S1) och navigationsknappen (S4)).
- Slå på huvudströmbrytaren (S1).
- Släpp programknappen (S1) (för DW70.4, släpp programknappen (S1) och navigationsknappen (S4)).

Service meny

- Stäng av huvudströmbrytaren.
- Vänta i åtminstone 5 sekunder.
- Håll program- och startknappen (S1 & S2) intryckta.
- Slå på huvudströmbrytaren.
- Släpp program- och startknappen (S1 & S2).

Variantinställning (ej DW70.4)

- Håll program- och startknapp (S1 & S2) intryckta.
- Slå på huvudströmbrytaren
- Släpp program- och startknapparna (S1 & S2)
- Tryck på startknappen (S2) 3 gånger inom 5 sekunder.
- Välj variant genom att trycka på startknappen (S2) och bekräfta ditt val genom att trycka på programknappen (S1)

Komponenttest:

Gå först in i Servicemenyn.

DW70.1, DW70.3, DW70.5 och DW70.C

Komponenttest:

Tryck på knappen (S1) och stega igenom följande komponenter:

1. Inloppsventil och mixventil (endast maskiner med avhårdare)
2. Inloppsventil
3. Saltventil (endast maskiner med avhårdare)
4. Diskmedel och sköljmedelsdoserare
5. Cirkulationspump
6. Värmeelement och cirkulationspump (Max 75°C)
7. Fläktar
8. Avloppspump

DW70.4

Gå först in i servicemenyn.

Gå först till servicemenyn steg 2 genom att trycka på knappen (S4)

Tryck på knappen (S3) för att aktivera följande komponenter.

1. Ventil (Inloppsventil och mixventil (endast maskiner med avhårdare) display visar intagen vattenmängd i antal pulser, pulsmätare är placerad i luftavbrottet).
2. Ventil (Inloppsventil, visar trycksensorvärde)
3. Salt (Saltventil, endast maskiner med avhårdare)
4. Behållare (Disk- och vätmedelsdoserare)
5. Cirkulation (Cirkulationspump)
6. Värme (Värmeelement och cirkulationspump (Max 75 °C))
7. Fläktar (Displayen visar fuktensorvärde)
8. Avloppspump