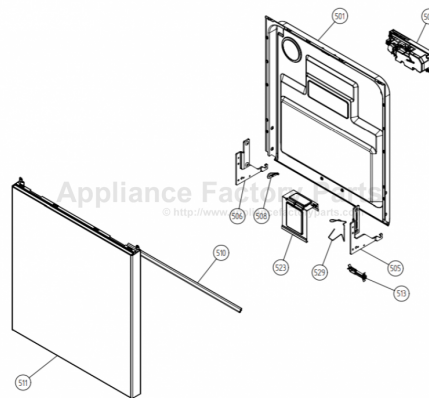


This Owner's Manual is provided and hosted by [Appliance Factory Parts](http://www.ApplianceFactoryParts.com).



# ASKO D3120WH Owner's Manual

[Shop genuine replacement parts for ASKO D3120WH](#)



[Find Your ASKO Dishwasher Parts - Select From 209 Models](#)

----- Manual continues below -----



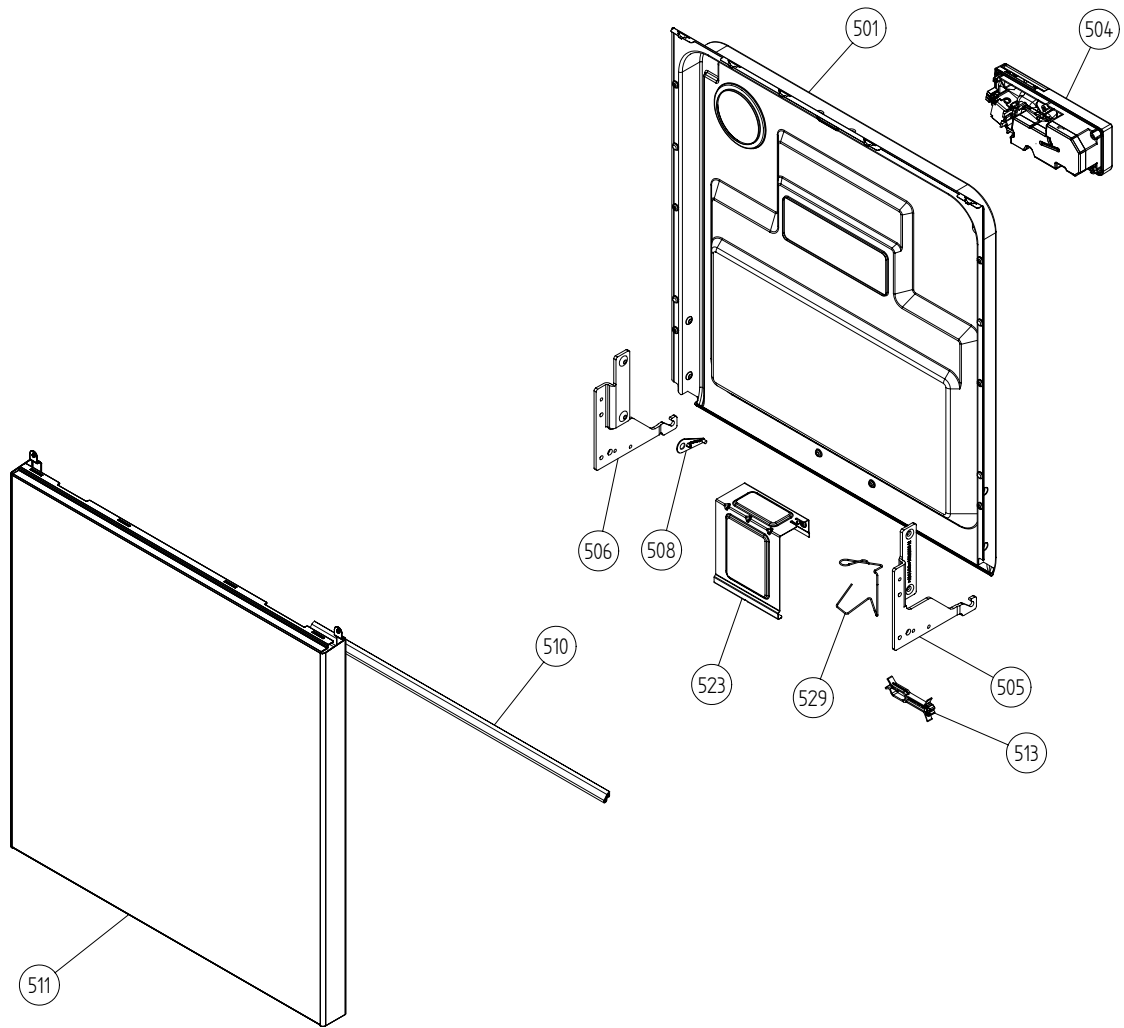
## Spare Parts Catalogue

Dishwashers \ 3000 Series  
Type: DW20.1US  
Model: D3120 US White Bi

Prod. No: 107312000  
October 5th 2004

**AM Appliances Group**

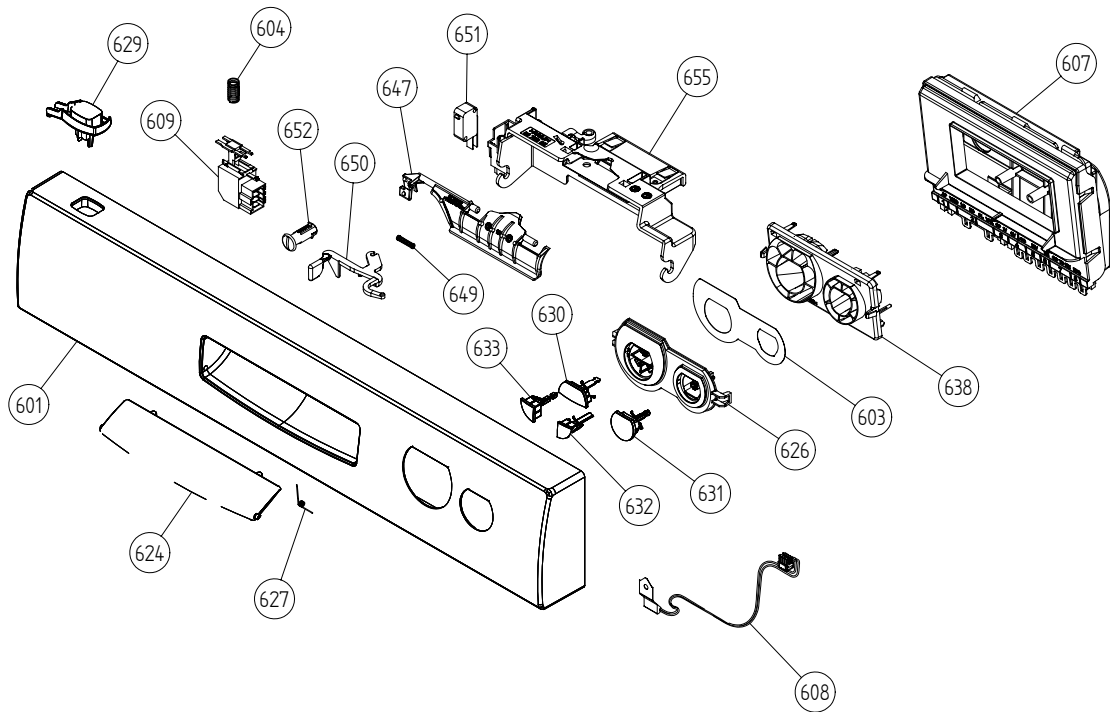
P.O. Box 851805 • Richardson • TX 75085-1805  
789 N. Grove Road • Suite 103 • Richardson • TX 75081



## ***Inner door, panel and related parts***

**ASKO, D3120 US - White Bi (DW20.1US)**

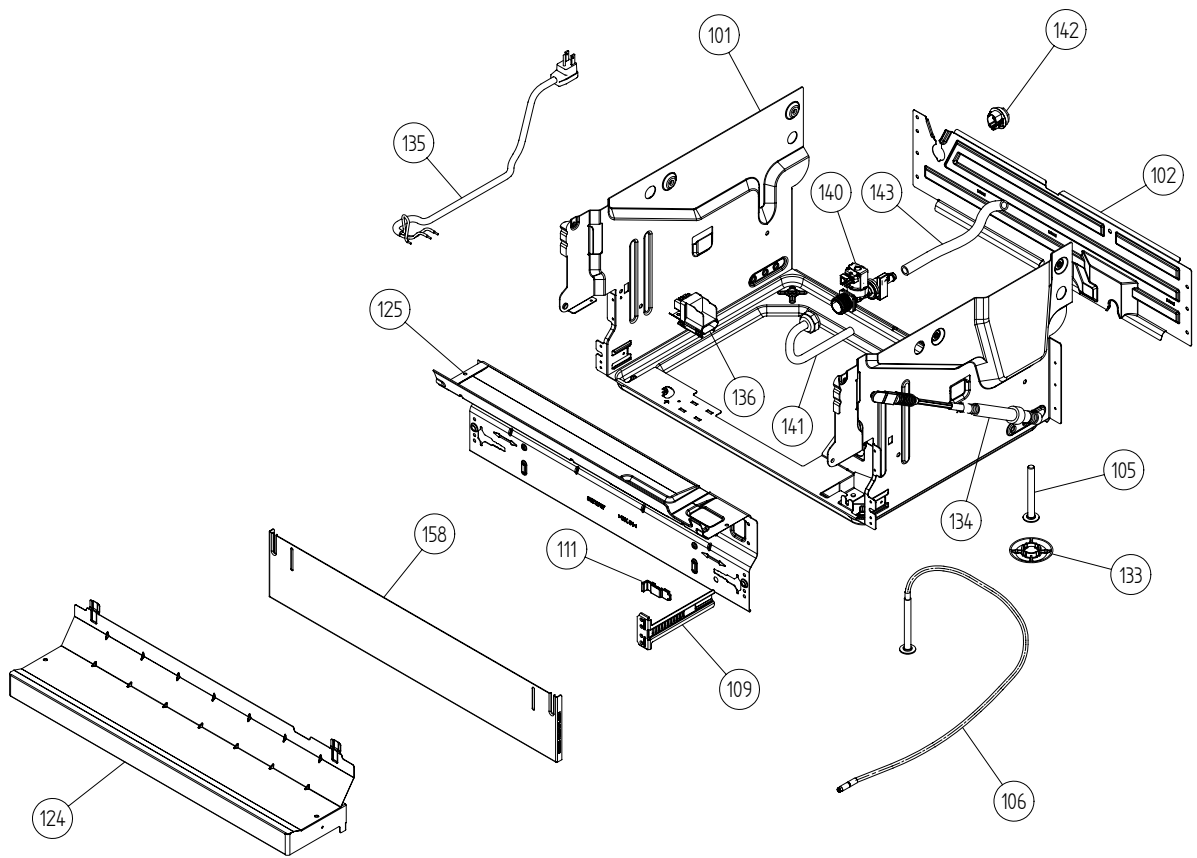
| <b>Pos</b> | <b>Spare part No.</b> | <b>Description</b>             | <b>Qty</b> | <b>Comment</b> |
|------------|-----------------------|--------------------------------|------------|----------------|
| 501        | 8801243               | DOOR INNER WINSUL              | 1 Pcs      |                |
| 501-a      | 8900646               | SCREW A4 RTS 42X13 T20 SORT    | 6 Pcs      |                |
| 501-b      | 8902121               | SCREW A2-MKFT 5X10             | 4 Pcs      |                |
| 504        | 8073804               | COMBIDISP OPTICAL 120V UL4     | 1 Pcs      |                |
| 504-a      | 8071916               | SEALDETCOMPLID                 | 1 Pcs      |                |
| 504-b      | 8071917               | CAP RINSE AGENT                | 1 Pcs      |                |
| 504-c      | 8071918               | LIDINCLSEAL AND SPRING         | 1 Pcs      |                |
| 504-d      | 8072288               | SEALING STRIP COMBIDISP        | 1 Pcs      |                |
| 504-e      | 8075778               | BRACKET COMBI DISPENSER        | 2 Pcs      |                |
| 504-f      | 8902087               | SCREW PTK 40X14 WN1452 FZB T20 | 6 Pcs      |                |
| 505        | 8057524               | HINGE RIGHT PAINTED DW95       | 1 Pcs      |                |
| 505-a      | 8057530               | HINGE SCREW DW95               | 1 Pcs      |                |
| 505-b      | 33500262              | NUT M4 (LOC-KING) 4 DIN 985    | 1 Pcs      |                |
| 506        | 8057525               | HINGE LEFT PAINTED DW95        | 1 Pcs      |                |
| 506-a      | 8057530               | HINGE SCREW DW95               | 1 Pcs      |                |
| 506-b      | 33500262              | NUT M4 (LOC-KING) 4 DIN 985    | 1 Pcs      |                |
| 507        | 8057530               | HINGE SCREW DW95               | 2 Pcs      |                |
| 507-a      | 33500262              | NUT M4 (LOC-KING) 4 DIN 985    | 2 Pcs      |                |
| 508        | 8057948               | SLIDE WASHER HINGE BEARINGDW95 | 2 Pcs      |                |
| 510        | 8057949               | DOOR SEAL Replby 8060254       | 1 Pcs      |                |
| 510        | 8060254               | DOOR SEAL LOWER CUTTING 555    | 1 Pcs      |                |
| 511        | 8071106-0             | DOOR OUTER THICK WHITE         | 1 Pcs      |                |
| 511-a      | 8900646               | SCREW A4 RTS 42X13 T20 SORT    | 6 Pcs      |                |
| 513        | 8074015               | CABLE BRACKET DOOR             | 1 Pcs      |                |
| 523        | 8057984               | BRACE STAND DW95               | 1 Pcs      |                |
| 523-a      | 8900646               | SCREW A4 RTS 42X13 T20 SORT    | 2 Pcs      |                |
| 523-b      | 8902357               | SCREW RTS 42X13 FZB T20 SORT   | 2 Pcs      |                |
| 529        | 8073612               | BRACKET FOR HARNESS            | 1 Pcs      |                |



## Control panel and related parts

### ASKO, D3120 US - White Bi (DW20.1US)

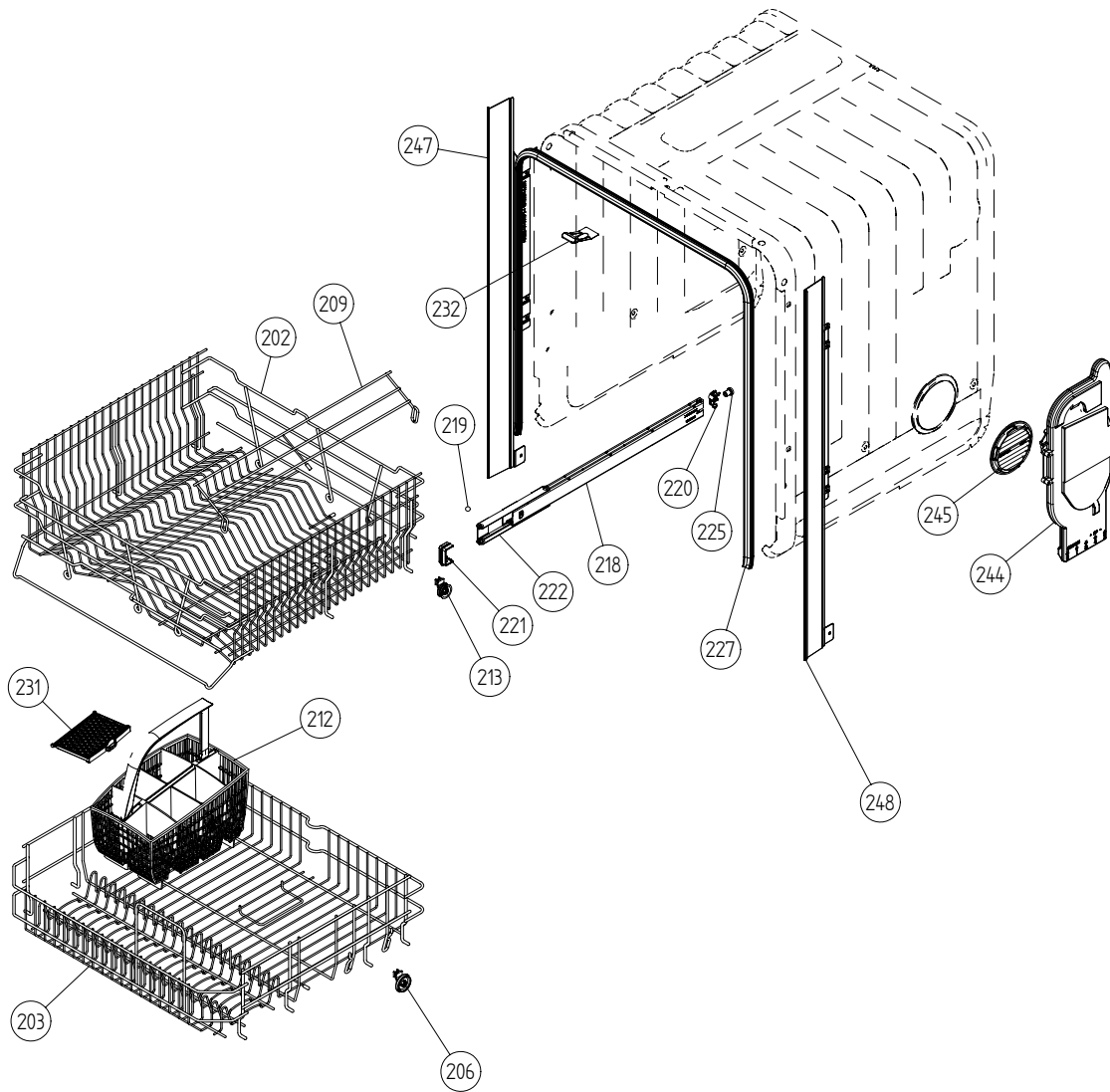
| Pos   | Spare part No. | Description                    | Qty   | Comment |
|-------|----------------|--------------------------------|-------|---------|
| 601   | 8075752-0-UL   | PANEL ASKO 3120(322) GRAPH UL4 | 1 Pcs |         |
| 602   | 8075157        | PROGINFOLABEL ASKO D322 ENG    | 1 Pcs |         |
| 602   | 8075156        | PROGINFOLABEL ASKO D322 FR     | 1 Pcs |         |
| 602   | 8075296        | PROGINFOLABEL ASKO D322 ES     | 1 Pcs |         |
| 603   | 8074957        | DECOR PLATE ASKO 322 GRAPHIC   | 1 Pcs |         |
| 604   | 8074277        | SPRING MAIN SWITCH             | 1 Pcs |         |
| 607   | 8801224        | CONTROLUNIT COMPL DW201 USA    | 1 Pcs |         |
| 608   | 8073788        | THERMISTOR UL4                 | 1 Pcs |         |
| 609   | 8073782        | MAIN PUSH SWITCH               | 1 Pcs |         |
| 614   | 8073888        | CABLE SET CIRCPUMP INLVALVE    | 1 Pcs |         |
| 617   | 8073889        | CABLE SET FLOW SENSOR          | 1 Pcs |         |
| 618   | 8073890        | CABLESET POWER                 | 1 Pcs |         |
| 619   | 8073886        | CABLESET DOOR                  | 1 Pcs |         |
| 622   | 8073883        | CABLE SET DRAIN                | 1 Pcs |         |
| 624   | 8073470-0      | COVER FOR HANDLE WHITE         | 1 Pcs |         |
| 626   | 8074000        | LENS DW320 ASKO UL4            | 1 Pcs |         |
| 627   | 8074464        | SPRING FOR LID HANDLE          | 1 Pcs |         |
| 629   | 8075078-0      | PUSHBUTTON MAINSWITCH GRAPHIC  | 1 Pcs |         |
| 630   | 8075082-0      | PUSHBUTTON ASKO 320 PROG UL4   | 1 Pcs |         |
| 631   | 8075081-0      | PUSHBU START/ST ASKO 320 UL4   | 1 Pcs |         |
| 632   | 8075084-0      | PUSHBU ASKO 320 RIGHT OPT UL4  | 1 Pcs |         |
| 633   | 8075083-0      | PUSHBU ASKO 320 LEFT OPT UL4   | 1 Pcs |         |
| 638   | 8074008        | LIGHT GUIDE ASKO UL4           | 1 Pcs |         |
| 647   | 8075550        | Subs to 8072906                | 1 Pcs |         |
| 647   | 8072906        | CATCH HANDLE UL4               | 1 Pcs |         |
| 649   | 8072908        | SPRING LOCK                    | 1 Pcs |         |
| 650   | 8072907        | CONTROL ARM SAFETY CATCH UL4   | 1 Pcs |         |
| 651   | 8073836        | MICROSWITCH DOOR               | 1 Pcs |         |
| 652   | 8057545        | ROTARY CATCH DW95              | 1 Pcs |         |
| 655   | 8072905        | PROTECTIONS CATCH UL4          | 1 Pcs |         |
| 655-a | 8902085        | SCREW PT KB40X10 WN1442 RFS    | 2 Pcs |         |
| 690   | 8075233        | INSTR D3120-322 USA ENG        | 1 Pcs |         |



## Base and related parts

### ASKO, D3120 US - White Bi (DW20.1US)

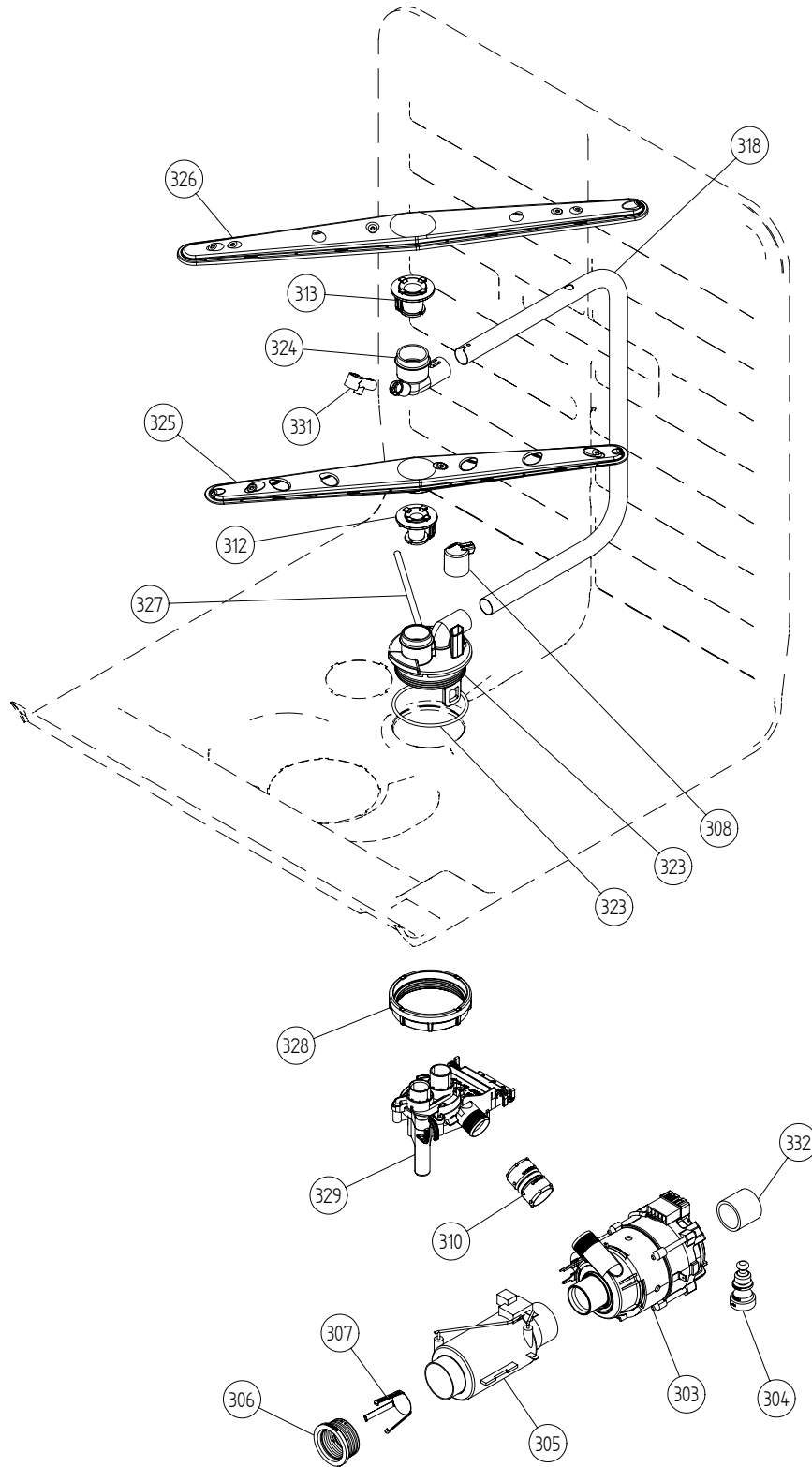
| Pos   | Spare part No. | Description                    | Qty   | Comment |
|-------|----------------|--------------------------------|-------|---------|
| 101   | 8074450        | BOTTEM OUTER DW20              | 1 Pcs |         |
| 101-a | 8901104        | SCREW M4x8 A4 MRT VAXED T20    | 2 Pcs |         |
| 101-b | 8901110        | SCREW O-RING A2-M6X12 T30      | 4 Pcs |         |
| 102   | 8073880        | REAR PANEL                     | 1 Pcs |         |
| 102-a | 8902357        | SCREW RTS 42X13 FZB T20 SORT   | 5 Pcs |         |
| 105   | 8074877        | FOOT M10x95 T30 88 FZB         | 2 Pcs |         |
| 106   | 8073647        | FOOT ADJUSTABLE FROM FRONT CPL | 1 Pcs |         |
| 109   | 8057549        | BRACKET KICKING PLATE DW95     | 2 Pcs |         |
| 111   | 8073481-49     | SPRING KICKING PLATE L-GREY    | 2 Pcs |         |
| 124   | 8074293-0      | LOWER COVER LOW WHITE          | 1 Pcs |         |
| 125   | 8073707        | GUARD PLATE                    | 1 Pcs |         |
| 125-a | 8902357        | SCREW RTS 42X13 FZB T20 SORT   | 4 Pcs |         |
| 133   | 8051957        | SLIDE FOOT DM-14               | 3 Pcs |         |
| 134   | 8058491-77     | DOORSRING COMPL GREY           | 2 Pcs |         |
| 135   | 8073774        | CORD SET AMERICA               | 1 Pcs |         |
| 136   | 8073781        | FILTER WITH SCREWPLINT         | 1 Pcs |         |
| 136-a | 8902131        | SCREW MRT-TT 4X6 FZB T20       | 1 Pcs |         |
| 140   | 8073825        | INLVALVE SINGLE 120V SENS UL4  | 1 Pcs |         |
| 140-a | 8052189        | HOSE CLIP RFZ 170-706R         | 1 Pcs |         |
| 141   | 8073879        | CONNECTIONS PIPE 3/8-3/4       | 1 Pcs |         |
| 142   | 8006948        | GROMMET Z13                    | 1 Pcs |         |
| 143   | 8074230        | RUBBER HOSE 10X15X225          | 1 Pcs |         |
| 143-a | 8052189        | HOSE CLIP RFZ 170-706R         | 2 Pcs |         |
| 154   | 33055088       | RUBBER HOSE 10X15 UL4          | 1 Pcs |         |
| 154-a | 8052189        | HOSE CLIP RFZ 170-706R         | 2 Pcs |         |
| 158   | 8059758-0      | KICKPLATE USA WHITE            | 1 Pcs |         |



## **Baskets and related parts**

### **ASKO, D3120 US - White Bi (DW20.1US)**

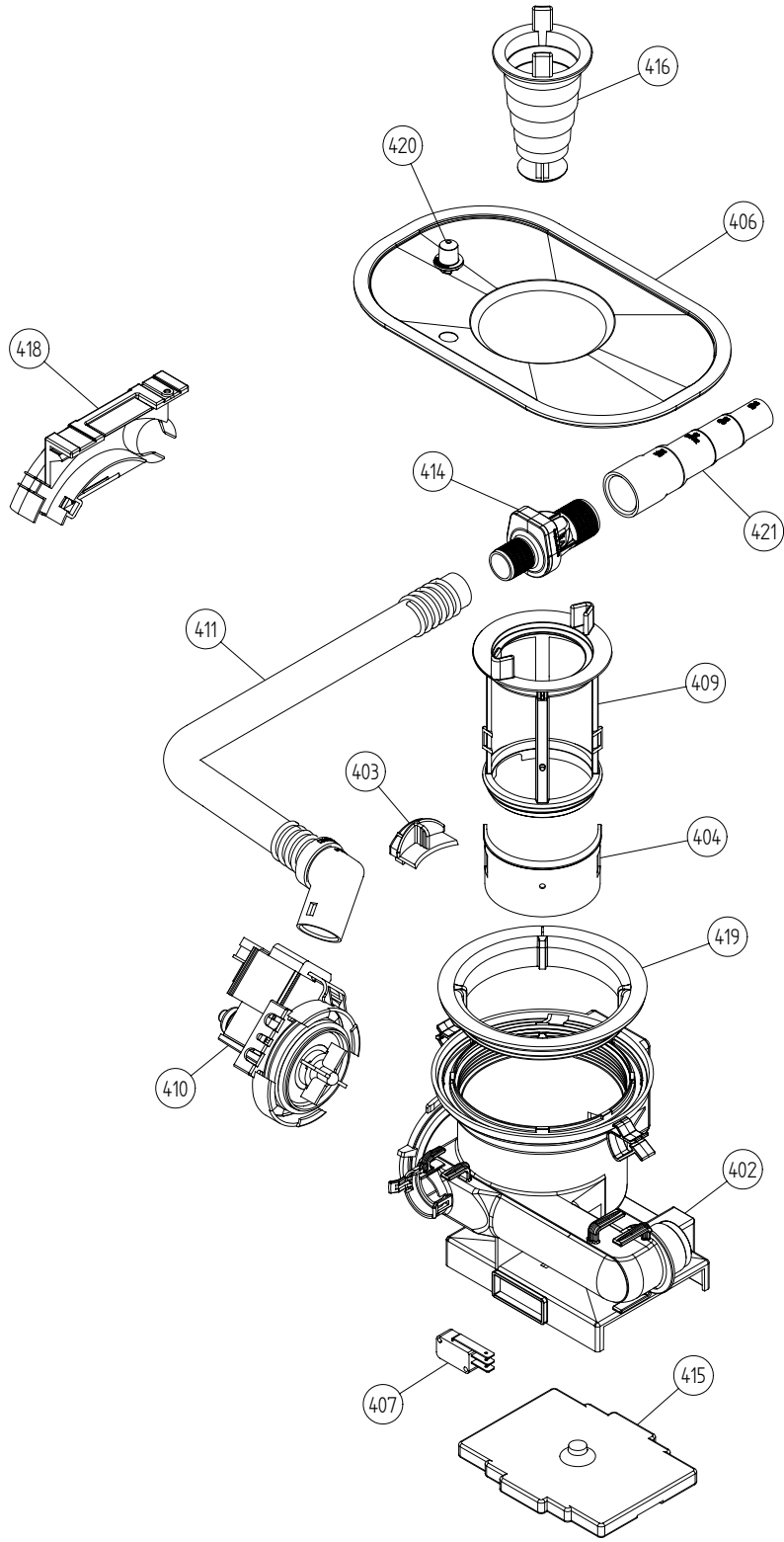
| <b>Pos</b> | <b>Spare part No.</b> | <b>Description</b>            | <b>Qty</b> | <b>Comment</b>   |
|------------|-----------------------|-------------------------------|------------|------------------|
| 201        | 8057056               | -                             | 1 Pcs      | Not a spare part |
| 202        | 8801236-36            | UPPER BASKET EXCL CPL DGREY   | 1 Pcs      |                  |
| 203        | 8801237-36            | LOWER BASKET EXCL CPL LGREY   | 1 Pcs      |                  |
| 206        | 8009516-77            | BASKET WHEEL COMPL GREY       | 8 Pcs      |                  |
| 209        | 8071336-36            | CUP SHELF DGREY ADJUSTABLE    | 1 Pcs      |                  |
| 212        | 8801239-77            | CUTLERY BASKET INCL DOOR      | 1 Pcs      |                  |
| 213        | 8058498-77            | BASKET WHEEL COMPL GREY DW95  | 4 Pcs      |                  |
| 218        | 8057052               | GUIDE RAIL                    | 2 Pcs      |                  |
| 219        | 8057977               | BALL DIAM 8 DW95              | 8 Pcs      |                  |
| 220        | 8057978-77            | BALLCATCH GREY COMPL          | 2 Pcs      |                  |
| 221        | 8057979-77            | BASKET STOP GREY              | 2 Pcs      |                  |
| 222        | 8058638-77            | BALL DISTANCE RING GUIDE RAIL | 2 Pcs      |                  |
| 225        | 8071247               | RUBBER BUFReplby 8057978-77   | 2 Pcs      |                  |
| 227        | 8057489               | DOOR STRIP UL4                | 1 Pcs      |                  |
| 230        | 8071257               | EDGE GUARD L=420 MM           | 1 Pcs      |                  |
| 231        | 8072986-77            | DOOR CUTLERYBASKET UL4        | 1 Pcs      |                  |
| 232        | 8801240               | LOCK CATCH INCL SCREW&NUT     | 1 Pcs      |                  |
| 244        | 8057514               | AIRBREAK STD W O-RING UL4     | 1 Pcs      |                  |
| 244-a      | 8052189               | HOSE CLIP RFZ 170-706R        | 1 Pcs      |                  |
| 245        | 8057536-77            | LOCKRING AIRBREAK GREY        | 1 Pcs      |                  |
| 247        | 8074342-0             | TRIM STRIP LEFT USA WHITE     | 1 Pcs      |                  |
| 247-a      | 8900646               | SCREW A4 RTS 42X13 T20 SORT   | 2 Pcs      |                  |
| 248        | 8074343-0             | TRIM STRIP RIGHT USA WHITE    | 1 Pcs      |                  |
| 248-a      | 8900646               | SCREW A4 RTS 42X13 T20 SORT   | 2 Pcs      |                  |



## Wash system

### ASKO, D3120 US - White Bi (DW20.1US)

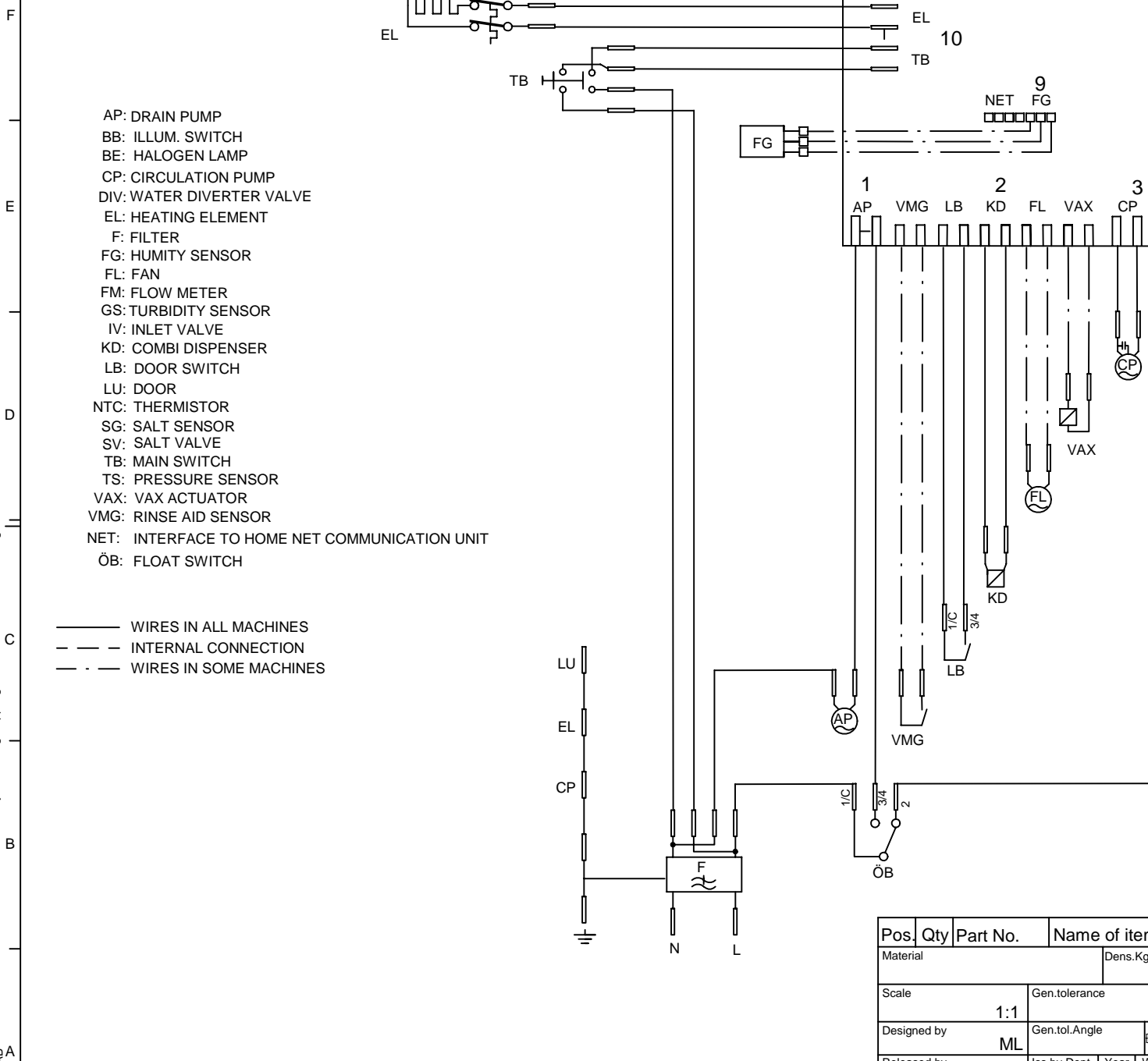
| Pos   | Spare part No. | Description                    | Qty   | Comment                              |
|-------|----------------|--------------------------------|-------|--------------------------------------|
| 301   | 8072108        | -                              | 1 Pcs | Not to be ordered                    |
| 303   | 8073813        | CIRCPUMP 120V 60HZ UL4         | 1 Pcs |                                      |
| 304   | 8075130        | RUBBER DAMPER CIRCPUMP UL4     | 1 Pcs |                                      |
| 305   | 8073785        | HEATINGELEMENT 1200W 120V      | 1 Pcs |                                      |
| 306   | 8073702        | ELEMENT TRANSMUTATION UL4      | 2 Pcs |                                      |
| 307   | 8075070        | INSERT FOR HEATER              | 1 Pcs |                                      |
| 308   | 8073385-77     | CUP DRAINAGE GREY              | 1 Pcs |                                      |
| 310   | 8072888        | HOSE CIRKPUMP UL4              | 1 Pcs |                                      |
| 310-a | 8056491        | HOSE CLIP 301-708              | 2 Pcs |                                      |
| 312   | 8072728-77     | SPRAY ARM BEARING L GREY UL4   | 1 Pcs |                                      |
| 313   | 8072731-77     | SPRAYARM BEARING UPPER UL4     | 1 Pcs |                                      |
| 318   | 8073387        | SPRAY PIPE Ø18                 | 1 Pcs |                                      |
| 323   | 8071606-L-77   | SPRAYTOWER L SPRAY NOZZLE UL4  | 1 Pcs |                                      |
| 323-a | 8901765        | O-RING 695X3 UL4               | 1 Pcs |                                      |
| 324   | 8072730-L-77   | SPRAYTOWER U SPRAY NOZZLE UL4  | 1 Pcs |                                      |
| 325   | 8072891        | SPRAYARM LOWER COMPLETE        | 1 Pcs |                                      |
| 326   | 8072894        | SPRAYARM UPPER COMPLETE        | 1 Pcs |                                      |
| 327   | 8073381        | TUBE POTRINSE 6x160            | 1 Pcs |                                      |
| 327-a | 8902085        | SCREW PT KB40X10 WN1442 RFS    | 2 Pcs |                                      |
| 328   | 8071607        | LOCKRING SPRAYPIPE BEARING UL4 | 1 Pcs |                                      |
| 329   | 8073823        | INTERMEDIATE                   | 1 Pcs |                                      |
| 329-a | 8075071        | O-RING 19X4 70NBR 4004         | 2 Pcs |                                      |
| 331   | 8072543-77     | SPRAY NOZZLE UL4               | 2 Pcs | For part no 8073381 and 8072730-L-77 |
| 332   | 8075420        | HOSE 268X328X295               | 1 Pcs |                                      |
| 332-a | 8052189        | HOSE CLIP RFZ 170-706R         | 2 Pcs |                                      |



## Bottom vell and related parts

### ASKO, D3120 US - White Bi (DW20.1US)

| Pos   | Spare part No. | Description                    | Qty   | Comment |
|-------|----------------|--------------------------------|-------|---------|
| 402   | 8073690-77     | BOTTOM WELL WITHOUT SENSOR UL4 | 1 Pcs |         |
| 402-a | 8073002        | O-RING 109x4 NBR70 UL4         | 1 Pcs |         |
| 403   | 8057487-79     | COVER PLATE BOTTOM WELL YELLOW | 1 Pcs |         |
| 404   | 8058454        | COVER PLATE INLET DW95         | 1 Pcs |         |
| 406   | 8074364        | STRAINER DW20                  | 1 Pcs |         |
| 406   | 8074252        | Use 8074364                    | 1 Pcs |         |
| 407   | 8073835        | MICROSWITCH FLOAT              | 1 Pcs |         |
| 409   | 8073396-77     | INSERT STRAINER BASKET         | 1 Pcs |         |
| 410   | 8073818        | DRAIN PUMP 120V 60HZ UL4       | 1 Pcs |         |
| 410-a | 8002584        | O-RING 495X30 NBR70 UL1        | 1 Pcs |         |
| 411   | 8074030        | OUTLET HOSE 25 M UL4           | 1 Pcs |         |
| 411-a | 8052239        | HOSE CLIP RFZ 285-316-706R     | 1 Pcs |         |
| 411-b | 8052430        | CABLE STRIP PLT3S -M (291X48)  | 1 Pcs |         |
| 414   | 8073403        | NON RETURN VALVE               | 1 Pcs |         |
| 414-a | 8052239        | HOSE CLIP RFZ 285-316-706R     | 1 Pcs |         |
| 414-b | 8053642        | HOSE CLIP 271-708              | 1 Pcs |         |
| 415   | 8075110        | FLOAT                          | 1 Pcs |         |
| 416   | 8057972-77     | STRAINER BASKET GREY           | 1 Pcs |         |
| 418   | 8072528-77     | HOLDER OUTLETHOSE              | 1 Pcs |         |
| 418-a | 8053642        | HOSE CLIP 271-708              | 1 Pcs |         |
| 418-b | 8052239        | HOSE CLIP RFZ 285-316-706R     | 1 Pcs |         |
| 418-c | 33700450       | CABLE STRIP T 30 R             | 1 Pcs |         |
| 418-d | 8902072        | SCREW PT KB40X10 WN1442 GALV   | 1 Pcs |         |
| 419   | 8072848        | LOCKRING BOTTOM WELL UL4       | 1 Pcs |         |
| 420   | 8074760-77     | VENTILATOR UL4                 | 1 Pcs |         |
| 421   | 8075321        | END CUFF USA UL4               | 1 Pcs |         |



- AP: DRAIN PUMP
- BB: ILLUM. SWITCH
- BE: HALOGEN LAMP
- CP: CIRCULATION PUMP
- DIV: WATER DIVERTER VALVE
- EL: HEATING ELEMENT
- F: FILTER
- FG: HUMITY SENSOR
- FL: FAN
- FM: FLOW METER
- GS: TURBIDITY SENSOR
- IV: INLET VALVE
- KD: COMBI DISPENSER
- LB: DOOR SWITCH
- LU: DOOR
- NTC: THERMISTOR
- SG: SALT SENSOR
- SV: SALT VALVE
- TB: MAIN SWITCH
- TS: PRESSURE SENSOR
- VAX: VAX ACTUATOR
- VMG: RINSE AID SENSOR
- NET: INTERFACE TO HOME NET COMMUNICATION UNIT
- ÖB: FLOAT SWITCH

— WIRES IN ALL MACHINES  
 - - - INTERNAL CONNECTION  
 - · - WIRES IN SOME MACHINES

S:\UIDw2011\_Tryckunderlag\Kopplingschema\8073809 Circuit diagram DW20\_4\_c.dft , mail , 2002-06-18 08:34:08

This document must not be copied without our written permission, and the contents thereof must not be imparted to a third party nor be used for any unauthorized purpose. ASKO Cylinder AB

| Pos.        | Qty | Part No.      | Name of item |
|-------------|-----|---------------|--------------|
| Material    |     |               | Dens.Kg/     |
| Scale       |     | Gen.tolerance |              |
| Designed by |     | Gen.tol.Angle |              |
| Released by |     | Iss by Dept   | Year   W     |
|             |     | UD            | 00 4         |

| Rev ind | Revision | Appd | Year Week |
|---------|----------|------|-----------|
|         |          |      |           |

ASKO CYLINDA