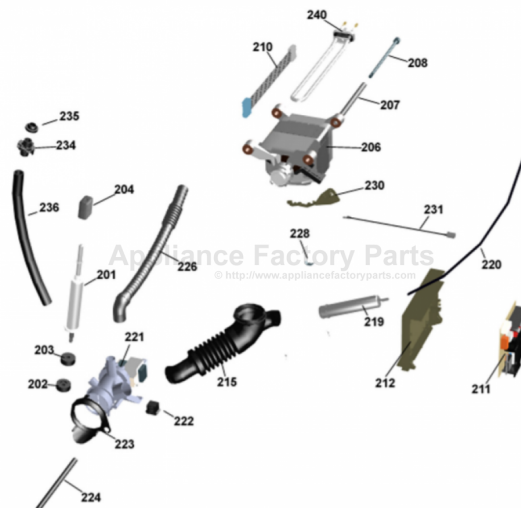


This Owner's Manual is provided and hosted by [Appliance Factory Parts](http://www.appliancefactoryparts.com).



ASKO W640 Owner's Manual

[Shop genuine replacement parts for ASKO W640](#)



[Find Your ASKO Washer Parts - Select From 53 Models](#)

----- Manual continues below -----



Spare Parts Catalogue

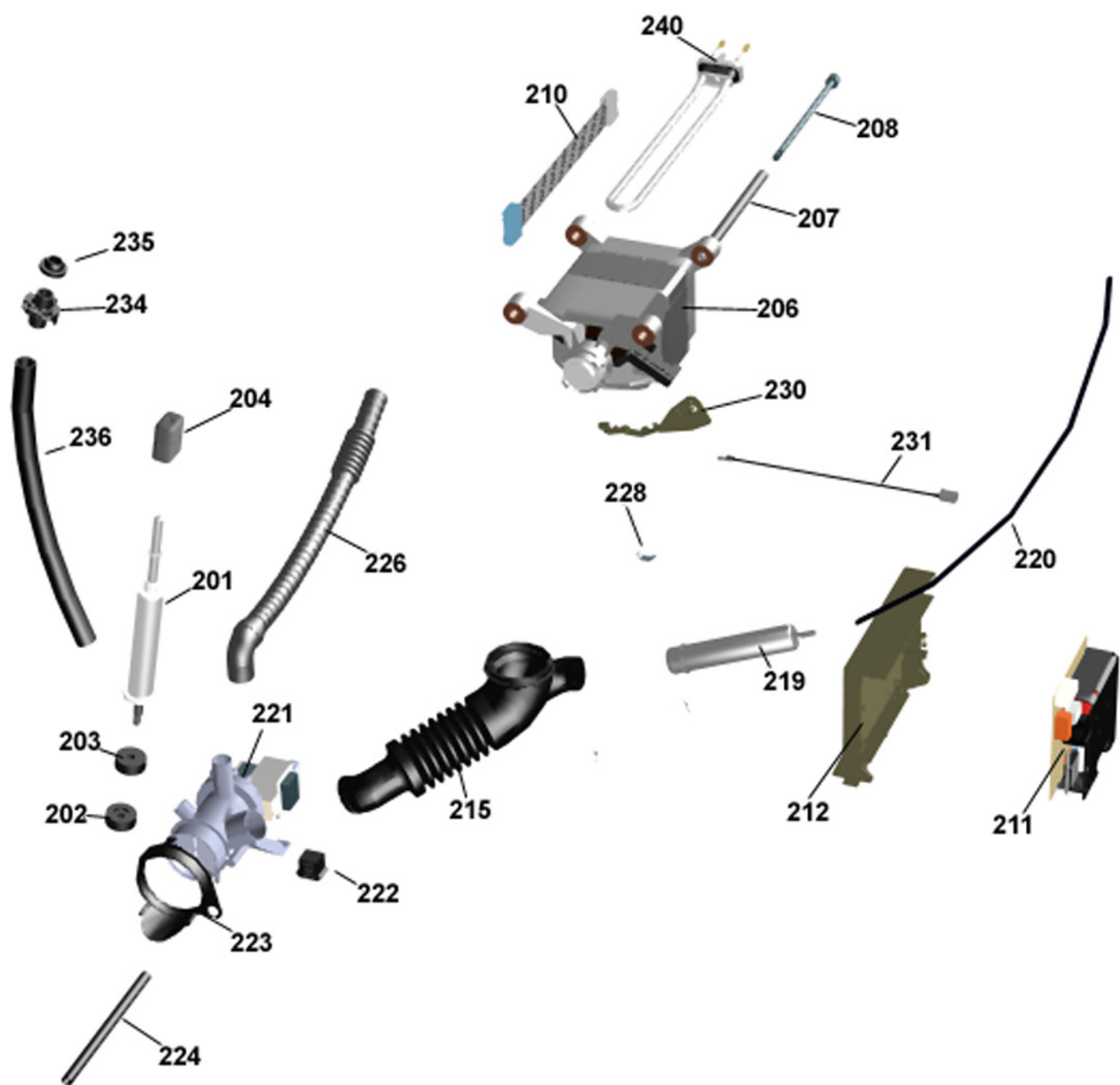
ASKO Washing Machines \ ASKO 600 Series
Type: WM55US
Model: W640 US white

Prod. No: 10764000

January 16th 2013

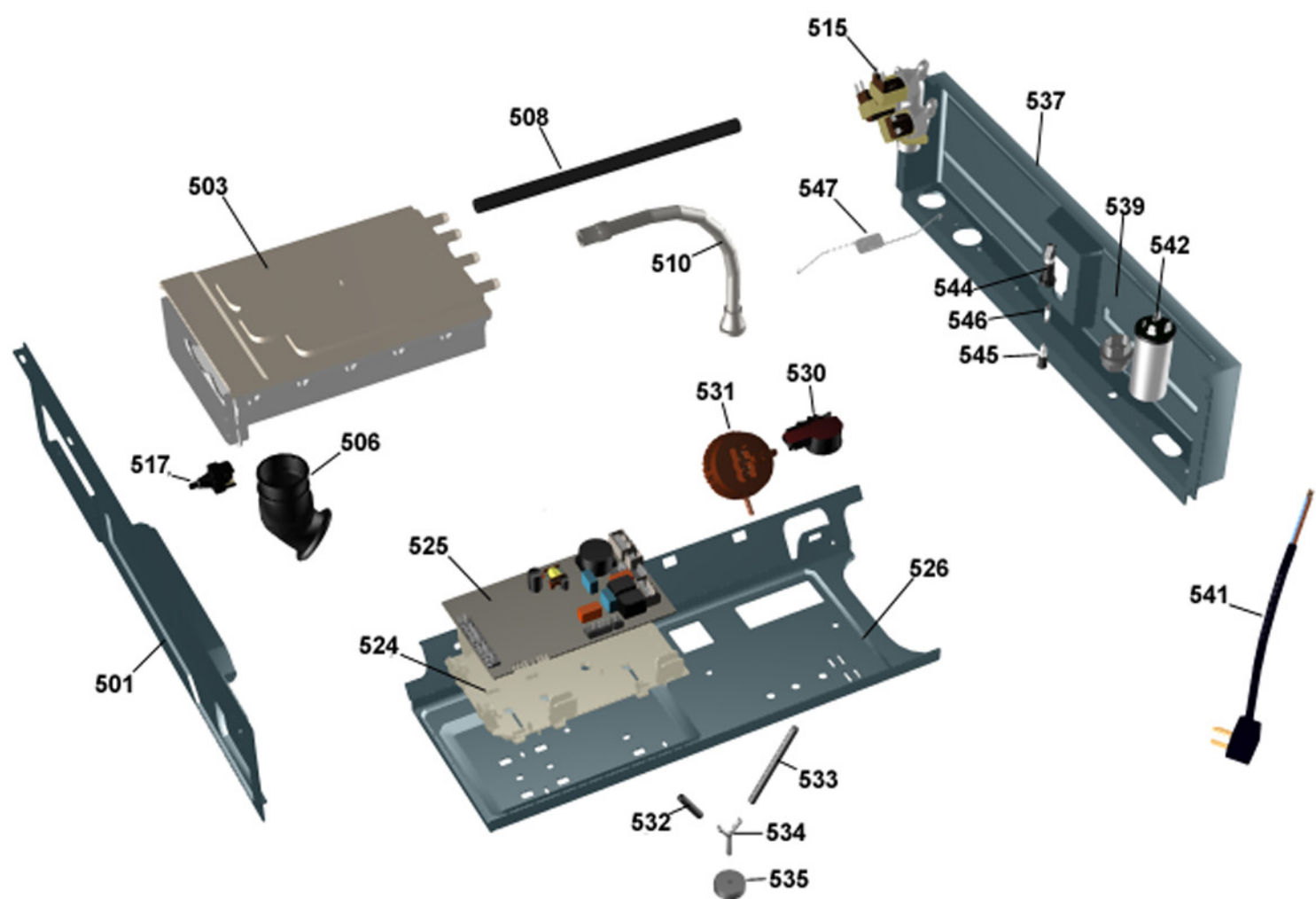
ASKO Appliances Inc.

4001 E Plano Parkway #1004001 E Plano Parkway #100
Plano, Texas 75074



Lower session**ASKO, W640 US - white (WM55US)**

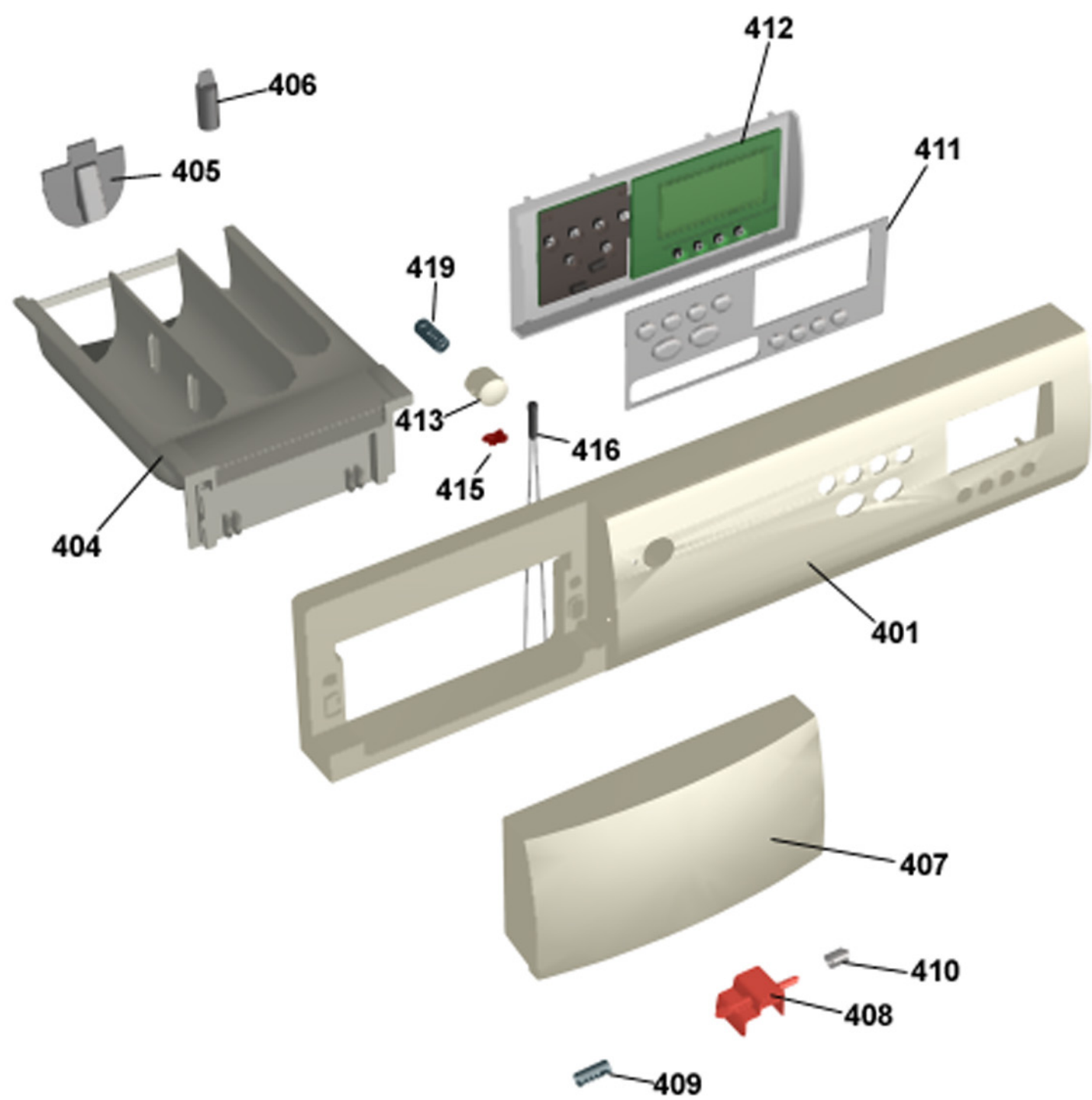
Pos	Spare part No.	Description	Qty	Comment
201	8801171	Spring Leg Kit W600s-Set of 4	1 Pc's	
202	8055796	RUBBER BUFFER SPRING LEG	4 Pc's	
203	8055797	RUBBER BUFFER SPRING LEG	4 Pc's	
204	8061668	Rubber Damper Spring Leg	4 Pc's	
206	8063734	Motor WM/FHP	1 Pc's	
206-a	8901155	Nut	2 Pc's	
206-b	8901337	Washer	1 Pc's	
207	8058261	Spacer Tube Motor 05 WM	2 Pc's	
208	8063591	Screw	2 Pc's	
210	8086404	Cable Set WM 66/55-Mtr Brd/Motor	1 Pc's	
211	8061399	Board Mtr13605 20605640/60	1 Pc's	
212	8061918	Holder Motor Controller WM 20	1 Pc's	
212-a	8901097	Screw Terminal	1 Pc's	
212-b	8901322	Washer	1 Pc's	
215	8801516	Bellows Hose Outlet Pump w/Clamps	1 Pc's	
215-a	8063262	HOSE CLIP 80.0-708	1 Pc's	
215-b	8056471	Hose Clips	1 Pc's	
215-c	8084609	HOSE CLIP 39.6	1 Pc's	
219	8061924	Pressure Chamber	1 Pc's	
219-c	8084609	HOSE CLIP 39.6	1 Pc's	
220	7382670	Rubber Hose	1 Pc's	
221	8801264	Drain Pump w/clamps	1 Pc's	
221-a	8801186	Seal Pump Insert	1 Pc's	
221-b	8801297	Pump insert	1 Pc's	
222	8061649	Rubber Buffer Drain Pump WM20	2 Pc's	
223	8061796	Rubber Ring Drain Pump WM20	1 Pc's	
224	8061725	Drain Hose WM20	1 Pc's	
224-a	8052731	HOSE CLIP 14,8	1 Pc's	
226	8061998	Outlet Hose WM20	1 Pc's	
226-a	8056491	HOSE CLIP 30.1-708	1 Pc's	
228	33700183	Terminal	1 Pc's	
228-a	8901097	Screw Terminal	1 Pc's	
228-b	8901413	Lock Washer laundry tops	1 Pc's	
230	8061738	Thermistor Holder WM20	1 Pc's	
231	8061663	Thermistor W600's	1 Pc's	
232	8061976	Cable Holder W600	2 Pc's	
234	8061674	Recirculation Stub	1 Pc's	
235	8061673	Grommet Recirculation Stub	1 Pc's	
236	8063721	Hose recirculation WM20	1 Pc's	
236-a	8054196	Clamp	2 Pc's	
240	8061706	HEATING ELEMENT 2000W 230V UL4	1 Pc's	



Upper session

ASKO, W640 US - white (WM55US)

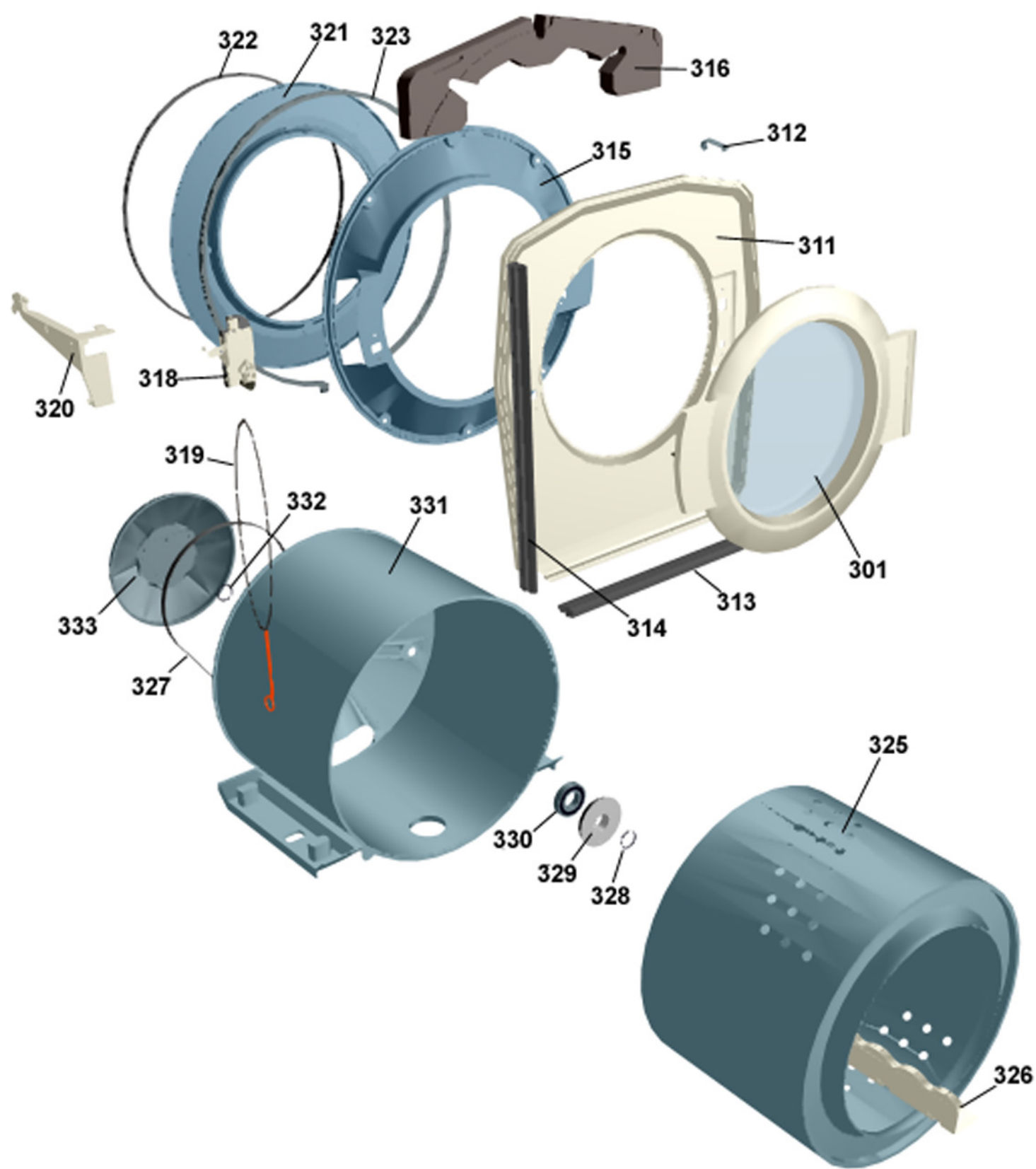
Pos	Spare part No.	Description	Qty	Comment
501	8061690	Front Beam 600/700 Series	1 Pc's	
501-a	8902362	Screw 20 Torx Self Tapping	2 Pc's	
501-b	8901413	Lock Washer laundry tops	2 Pc's	
501-c	8902087	Screw Plastic Housing 20 Torx	2 Pc's	
503	8061661	Container Det Disp 600s	1 Pc's	
503-a	8901970	Screw	2 Pc's	
503-b	8902072	SCREW PT KB40X10 WN1442 GALV	1 Pc's	
503-c	8056656	Cable Tie	3 Pc's	
506	8064692	BELLOW HOSE INLET UL4	1 Pc's	
506	8061628	BELLOWS HOSE INLET WM20	1 Pc's	
506-a	8063607	HOSE CLIP 57,5	1 Pc's	
508	8061702	Rubber Hose	3 Pc's	
510	8061736	Ventilation Hose WM20	1 Pc's	
510-a	8052730	HOSE CLIP 21,0	1 Pc's	
515	8061757	Fill Valve 3way 600	1 Pc's	
515-a	8901097	Screw Terminal	2 Pc's	
517	8061875	Switch ON/OFF WM20	1 Pc's	
524	8061921	Holder Prog Control WMD600/700	1 Pc's	
525	8080063	Board 640/660 w/o Rinse Sensor	1 Pc's	
526	8061692	Bracket Elec Comp WM 20	1 Pc's	
526-a	8902362	Screw 20 Torx Self Tapping	2 Pc's	
526-b	8900327	Screw 20 Torx Self Tapping	1 Pc's	
529	8086400-1	Basic Harness	1 Pc's	
529	8086447	Add. Harness WM66/55-Overflow Protection	1 Pc's	
530	8061664	Level Sensor WM	1 Pc's	
531	8064275	Level Switch WM21 UL4	1 Pc's	
532	8003641	Rubber Hose	1 Pc's	
533	7382985	Rubber Hose	1 Pc's	
534	8051843	Y Pipe Water Level SW WM	1 Pc's	
535	8061997	Ground Level Switch Hose WM20	2 Pc's	
536	8061975	Cable Holder	1 Pc's	
537	8061694	CROSS BEAM Repl.by 8801477	1 Pc's	
537-a	8900327	Screw 20 Torx Self Tapping	4 Pc's	
539	8006948	Grommet	1 Pc's	
541	8064210	PWR Cord w/flat pin sleeves	1 Pc's	
542	8058558	RFI 05/06 WM	1 Pc's	
542-a	8901155	Nut	1 Pc's	
542-b	8901419	Lock Washer	1 Pc's	
544	8801354	Fuse Holder Assembly	2 Pc's	For units produced before wk 34 2002
545	8801354	Fuse Holder Assembly	2 Pc's	For units produced before wk 34 2002
546	8058140	Fuse	1 Pc's	
547	8061923	Balancing Spring WM 20	2 Pc's	



Control panel

ASKO, W640 US - white (WM55US)

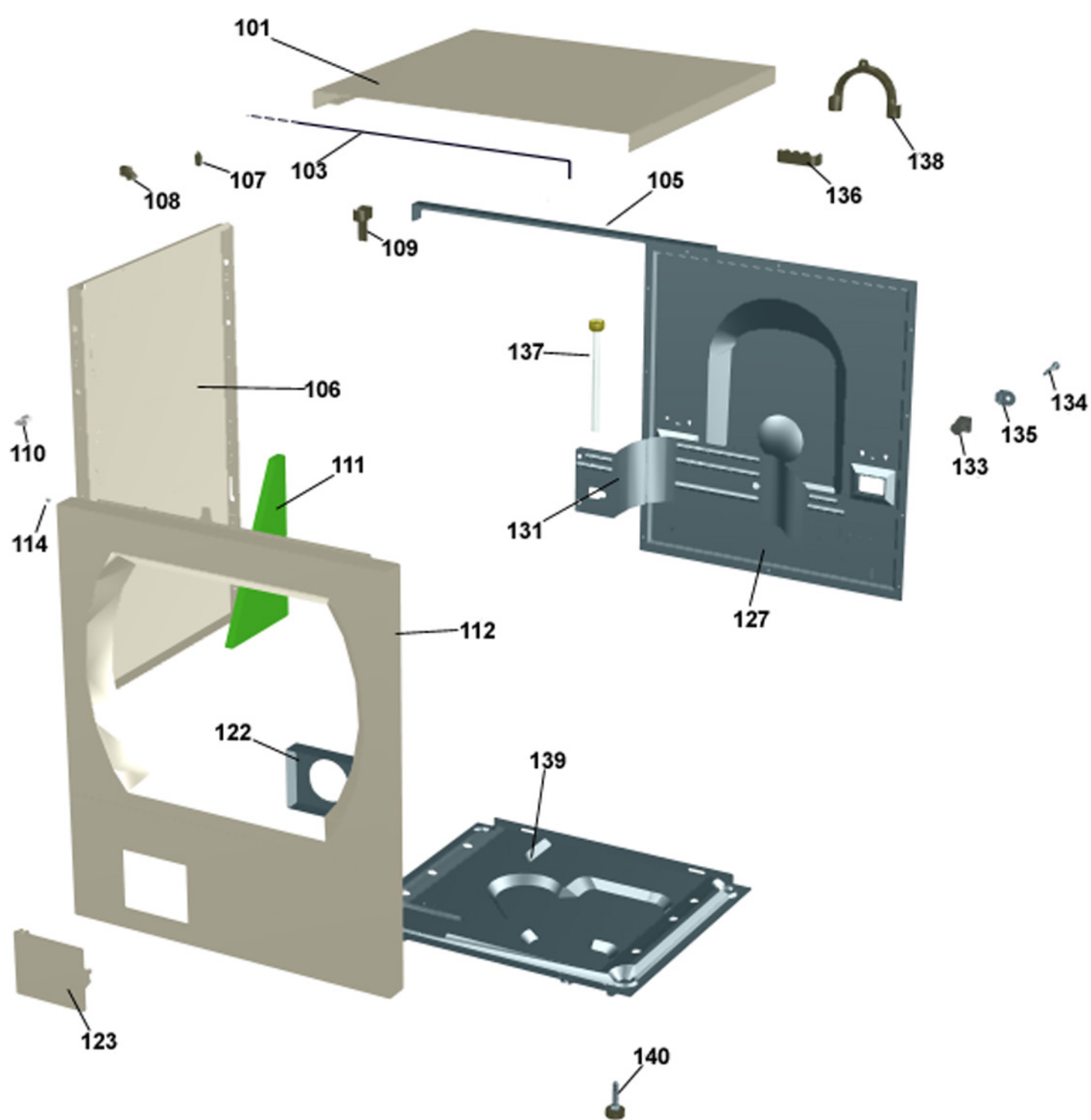
Pos	Spare part No.	Description	Qty	Comment
401	8063452-0-UL	Control Panel W640	1 Pc's	
401-a	8901591	Clip/Panel 600700s	4 Pc's	
403	8063368-49	Plate Prog Info WM 55/66	1 Pc's	
404	8061630	Detergent Comp WM20	1 Pc's	
405	8061633	Siphon Divider Liq Det 600s	1 Pc's	
406	8061634	Siphon Fabric softener WM20	1 Pc's	
408	8061621-34	Safety Catch Det Com W600s	1 Pc's	
409	8061622	Spring Safety Catch WM20	1 Pc's	
410	8064010	Spacing sleeve	1 Pc's	
411	8064271-0	Pushbuttons	1 Pc's	
412	8076271	Display Unit WMD21	1 Pc's	
413	8061902-0	On/Off Button 600/700 Series	1 Pc's	
415	8061822	Decor Lens	1 Pc's	
416	8064068	Indication Lamp WM55/66	1 Pc's	
419	8061857	Spring Main Switch WMD 20	1 Pc's	
490	8063858	INSTR GENERAL WM20 US/CA	1 Pc's	



Cylinder and related parts

ASKO, W640 US - white (WM55US)

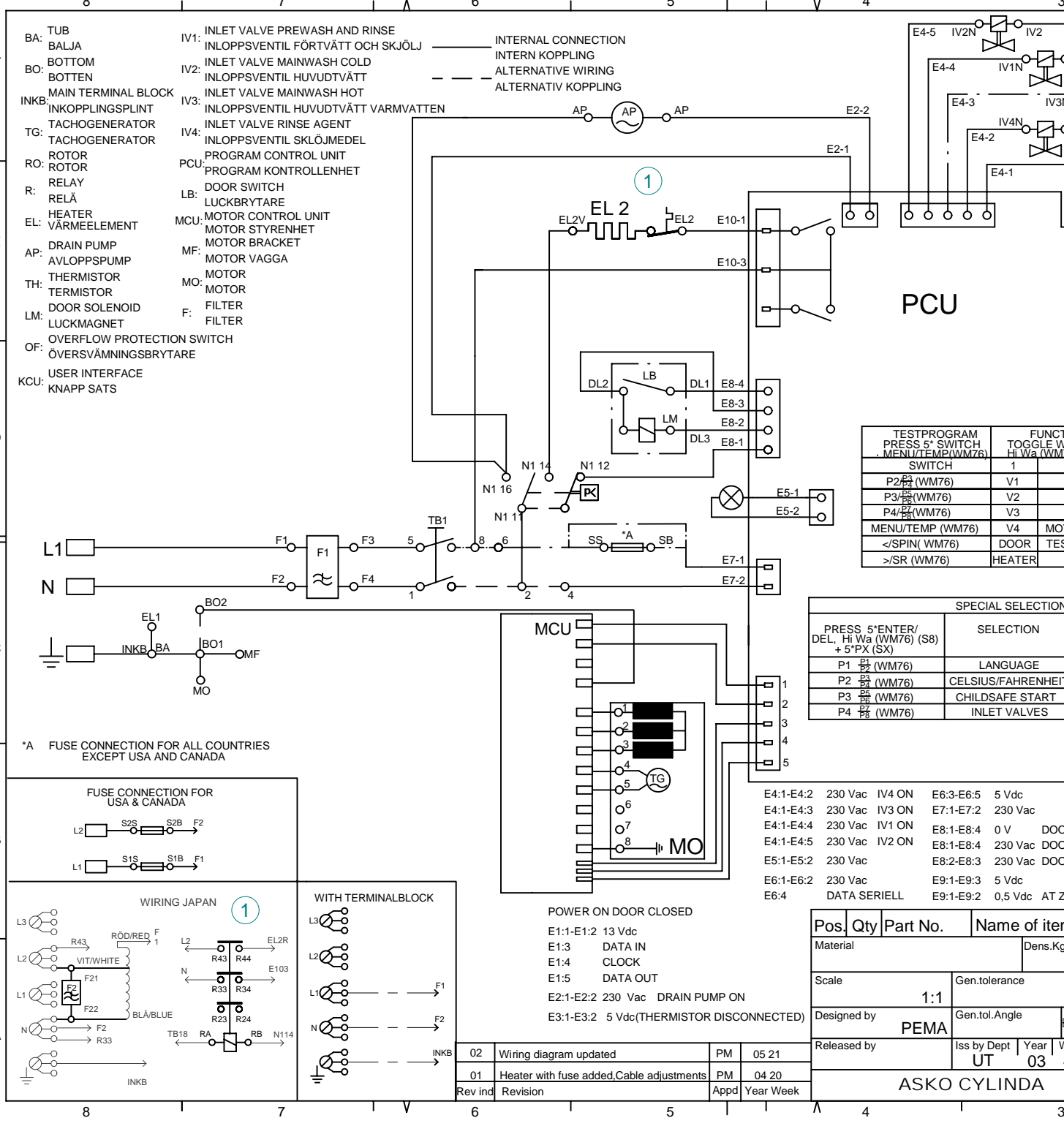
Pos	Spare part No.	Description	Qty	Comment
301	8064906-85	FRONT DOOR CPL.SILVER/GREY UL4	1 Pc's	
302	8061651-96	FRAME FRONT Repl.by 8061651-85	1 Pc's	
303	8061652-42	Front Door Frame Inner	1 Pc's	
304	8061685	Included with POS 301	1 Pc's	
305	8061798	Lock Hook Door 600s	1 Pc's	
306	8064025	Seal front door WM20/21	1 Pc's	
307	8801321	Securing Plate	4 Pc's	
308	8061686-42	Hinge Front Door Grey WM 20	1 Pc's	
308-a	8901969	SCREW MRT-TT 5x12 FZB T20	2 Pc's	
309	8061687	Shaft for Hinge WM 20	1 Pc's	
311	8061671-0	Cover Plate Outer White	1 Pc's	
312	8061879	Tension Spring	4 Pc's	
313	8061980	Lower Seal WM20	1 Pc's	
314	8061616	Gap Sealing Side WM 20	2 Pc's	
315	8061670	COVER PLATE INNER	1 Pc's	
316	8061678	NLA-Damper Weight	2 Pc's	
316-a	8901135	SCREW	3 Pc's	
318	8061679	Door Lock Comp W600s	1 Pc's	
318-a	8902087	Screw Plastic Housing 20 Torx	2 Pc's	
319	8801305	EMERGENCY OPENING COMPL.	1 Pc's	
320	8061680	CONTACT GUARD DOOR LOCK	1 Pc's	
321	8065043	Front Panel Tub	1 Pc's	
322	8061889	Seal Strip Tub 600s	1 Pc's	
323	8061669	TENSION RING WM20	1 Pc's	
325	8801277	NLA-Cylinder w/Sealing Kit	1 Pc's	
326	8061604	Drum Paddle	3 Pc's	
327	8061682	Drive Belt W600 Series	1 Pc's	
328	8058497	ORing 600s Drum Shaft WM	1 Pc's	
329	8801276	Kit Sealing Cassette	1 Pc's	
330	8056314	Bearing Comp WM Rear Panel	2 Pc's	
331	8801259	CONTAINER COMPL.WM20 CAST IRON	1 Pc's	
332	8056810	Wave Washer WM	1 Pc's	
333	8056376	Pulley for Drum WM	1 Pc's	
334	8057209	WASHER 42X10X5	1 Pc's	
335	8901052	Screw	1 Pc's	



Outer casing

ASKO, W640 US - white (WM55US)

Pos	Spare part No.	Description	Qty	Comment
101	8061817-0	Top Cover Wht WMD	1 Pc's	
101-a	8902362	Screw 20 Torx Self Tapping	3 Pc's	
101-b	8901413	Lock Washer laundry tops	2 Pc's	
103	8064062	Top Cover Strip	1 Pc's	
105	8064198	Support Beam	1 Pc's	
106	8801174-0	Side Panel Washer 600s	1 Pc's	
107	8061763	Clip Front Plate 600700s	2 Pc's	
108	8061916	CABLE HOLDER WMD20	3 Pc's	
109	8061713	HOLDER HOSE/SIDE PLATE WMD20	2 Pc's	
110	8080197	Holder Front Panel	2 Pc's	
111	8064017	Insulation	1 Pc's	
112	8063925-0	Front Panel W600/W640	1 Pc's	
112-a	8900327	Screw 20 Torx Self Tapping	4 Pc's	
112-b	8901413	Lock Washer laundry tops	2 Pc's	
114	8064222	Guide Front Plate	2 Pc's	
114-a	8901142	Screw discjh 1199	2 Pc's	
122	8061785	PUMP GUARD WM20	1 Pc's	
123	8061657-0	Door Out Pup W600s	1 Pc's	
127	8801466	REAR PANEL WM20/60/70	1 Pc's	
127-b	8902362	Screw 20 Torx Self Tapping	11 Pc's	
131	8061693	Cross Beam Rear 600	1 Pc's	
131-a	8902362	Screw 20 Torx Self Tapping	4 Pc's	
131-b	8901413	Lock Washer laundry tops	1 Pc's	
133	8064206-UL	GrommetShipping Support 600s	3 Pc's	
134	8901037	Screw bufo	3 Pc's	
135	8061767	Locking Clip Shipping 600s	3 Pc's	
136	8065773	HOSE FRAME REAR COVER WM	2 Pc's	
137	8056950	Fill Hose Pex WM	1 Pc's	
138	8050805	GOOSE NECK for DRAIN HOSE	1 Pc's	
138-a	8002263	Cable Strip	1 Pc's	
139	8061618	BASE PAN WMD20	1 Pc's	
140	8059334	Leveling Leg Comp WMD 20	4 Pc's	



- BA: TUB
- BO: BOTTOM
- INKB: MAIN TERMINAL BLOCK
- TG: TACHOGENERATOR
- RO: ROTOR
- R: RELAY
- EL: HEATER
- AP: DRAIN PUMP
- TH: THERMISTOR
- LM: DOOR SOLENOID
- OF: OVERFLOW PROTECTION SWITCH
- KCU: USER INTERFACE
- IV1: INLET VALVE PREWASH AND RINSE
- IV2: INLET VALVE MAINWASH COLD
- IV3: INLET VALVE MAINWASH HOT
- IV4: INLET VALVE RINSE AGENT
- PCU: PROGRAM CONTROL UNIT
- LB: DOOR SWITCH
- MCU: MOTOR CONTROL UNIT
- MF: MOTOR BRACKET
- MO: MOTOR
- F: FILTER

- INTERNAL CONNECTION
- INTERN KOPPLING
- ALTERNATIVE WIRING
- ALTERNATIV KOPPLING

TESTPROGRAM	FUNCTION
PRESS 5* SWITCH MENU/TEMP(WM76)	TOGGLE W/ HI Wa (WM76)
SWITCH	1
P2/P3 (WM76)	V1
P3/P4 (WM76)	V2
P4/P5 (WM76)	V3
MENU/TEMP (WM76)	V4
</SPIN (WM76)	DOOR TEST
>/SR (WM76)	HEATER

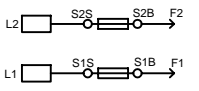
SPECIAL SELECTIONS	
PRESS 5*ENTER/DEL, Hi Wa (WM76) (S8) + 5*PX (SX)	SELECTION
P1/P2 (WM76)	LANGUAGE
P2/P3 (WM76)	CELSIUS/FAHRENHEIT
P3/P4 (WM76)	CHILDSAFE START
P4/P5 (WM76)	INLET VALVES

E4:1-E4:2	230 Vac	IV4 ON	E6:3-E6:5	5 Vdc
E4:1-E4:3	230 Vac	IV3 ON	E7:1-E7:2	230 Vac
E4:1-E4:4	230 Vac	IV1 ON	E8:1-E8:4	0 V DOOR
E4:1-E4:5	230 Vac	IV2 ON	E8:1-E8:4	230 Vac DOOR
E5:1-E5:2	230 Vac		E8:2-E8:3	230 Vac DOOR
E6:1-E6:2	230 Vac		E9:1-E9:3	5 Vdc
E6:4	DATA SERIELL		E9:1-E9:2	0,5 Vdc AT ZF

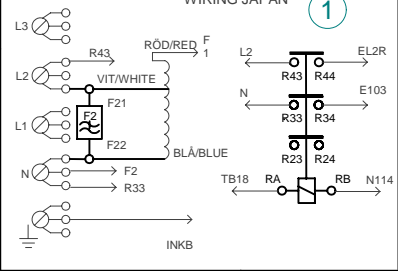
Pos.	Qty	Part No.	Name of item
Material			Dens.Kg/
Scale		Gen.tolerance	
Designed by		Gen.tol.Angle	
Released by		Iss by Dept Year W	
		UT 03 4	

*A FUSE CONNECTION FOR ALL COUNTRIES EXCEPT USA AND CANADA

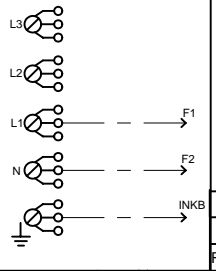
FUSE CONNECTION FOR USA & CANADA



WIRING JAPAN



WITH TERMINALBLOCK



POWER ON DOOR CLOSED

- E1:1-E1:2 13 Vdc
- E1:3 DATA IN
- E1:4 CLOCK
- E1:5 DATA OUT
- E2:1-E2:2 230 Vac DRAIN PUMP ON
- E3:1-E3:2 5 Vdc(THERMISTOR DISCONNECTED)

02	Wiring diagram updated	PM	05 21
01	Heater with fuse added, Cable adjustments	PM	04 20
Rev ind	Revision	Appd	Year Week

ASKO CYLINDA

This document must not be copied without our written permission, and the contents thereof must not be imparted to a third party without the prior written authorization of ASKO CYLINDA AB.

5 RINSES

NUMBER	PROGRAM	TEMPERATUR (MIN / MAX)	SPIN SPED	PRE WASH	MAIN WASH (MIN / MAX)	SPIN	RINSE 1	RINSE 2	RINSE 3	SPIN	RINSE 4	RINSE 5
		°C	rpm	min.	min.	min.	min.	min.	min.	min.	min.	min.
1	HEAVY	0-95	MAX	10	59-105	4	7,5	5	5	4	5	
2	NORMAL	0-95	MAX		20-105	4	7,5	5	5	4	5	
3	WHITE/COLOURED	0-95	MAX		20-60	4	7,5	5	5	4	5	
4	SYNTHETIC	0-95	800		35-80		7,5				5	
5	LIGHT	0-95	MAX		19-55		3,5				5	
6	QUICK	0-95	MAX		19-55		3,5					
7	WOOL	0-40	800		9-20		7,5	5				
8	HANDWASH	0-40	800		9-20		7,5	5				
9	RINSE		MAX									
10	SPIN		MAX									
11	DRAIN											

Normal action:

Clockwise 12 seconds on 3 seconds off, counterclockwise 12 seconds on 3 seconds off, 49 rpm.

Normal "fill" action:

(First 14 min of main wash)

Clockwise 9 seconds on 6 seconds off, counterclockwise 9 seconds on 6 seconds off, 40 rpm.

Super gentle action:

(Wool program)

Clockwise 3 seconds on 57 seconds off, counterclockwise 3 seconds on 57 seconds off, 49 rpm.

Slow super gentle action:

(Handwash program)

Clockwise 3 seconds on 57 seconds off, counterclockwise 3 seconds on 57 seconds off, 40 rpm.

Gentle action:

(Rinses in wool and handwash programs)

Clockwise 3 seconds on 27 seconds off, counterclockwise 3 seconds on 27 seconds off, 49 rpm.

Spin sequence:

(WM 50/55A)

Normal action clockwise and counterclockwise followed by a clockwise peak to 500 rpm, normal action clockwise and counterclockwise followed by a clockwise spin with selected spin speed. Time dep. on selected program.

Spin sequence:

(WM 75)

Normal action clockwise and counterclockwise followed by a clockwise peak to 400 rpm, clockwise peak to 400 rpm followed by a clockwise spin with selected spin speed. Time dep. on selected program.

Options: (all options are not available, in all programs)

Rinses:

With J3 not cut, 3 rinses will be executed. Spin between all rinses

With J3 cut, 5 rinses will be executed.

If super rinse is selected the machine will add two rinses.

Super rinse:

(WM50)

With J5 not cut super rinse is selected with S4 if J5 cut then super rinse is selected with S3

Presoak:

(WM 50)

With J2 not cut, 120 min adds before main wash.

Anticrease:

(WM 50)

With J2 cut, 120 min adds after last spin.

Economy:

(WM 50)

With J1 not cut, adds 22 min to the main wash.

High water level:

(WM 50)

With J1 cut, more water adds to the main wash and the rinses.

Delayed start:

1-24 h

02	Changed program names	PM	05 21
01	Added WM75, removed WM 66A	PM	03 40
01	Super rinse position selected by J5	PM	03 40
Rev ind	Revision	Appd	Year Week

Pos.	Qty	Part No.	Name of item
Material			Dens.Kg/
Scale		Gen.tolerance	
Designed by		Gen.tol.Angle	
Released by		Iss by Dept	Year W
		UT	01 C

ASKO CYLINDA