

This Owner's Manual is provided and hosted by [Appliance Factory Parts](#).



# FANTECH FTC99209 Owner's Manual

[Shop genuine replacement parts for FANTECH  
FTC99209](#)



[Find Your FANTECH Fan Parts - Select From 108 Models](#)

----- Manual continues below -----

# SER 150 Fresh Air Appliance

Item #: 99209

Variant : 120V 1~ 60Hz



## Technical parameters

Product	
Voltage (nominal)	120 V
Frequency	60 Hz
Phase(s)	1~
Input power	171 W
Input current	1.4 A
Air flow	144 cfm
Static pressure	0.4 in.wg
Certificate	CSA, AHRI
Exchanger	
Exchanger type	Energy recovery (synthetic)
Dimensions and weights	
Weight	48.5 lb
Used for	
Installation placement	Horizontal

## Description

- Airflow up to 145 cfm @ 0.4" Ps serves 2 to 5 bedroom homes
- Removable screw terminal for easy connection
- Compatible with Fantech's low-voltage controls
- Three speed ventilation control
- Washable electrostatic filters
- Optional drain line
- Anti-microbial material
- Withstands freezing
- AHRI certified

## Application

Fantech's SER 150 is an Energy Recovery Ventilator designed for higher static pressure applications.

## How it works

The unit brings a continuous supply of fresh air into a home while exhausting an equal amount of contaminated air. The energy recovery core at the center of the unit transfers heat and moisture...  
Find more details in our online catalogue

## Performances

	Speed	Supply Temperature		Net Airflow		Consumed Power W	Net Effectiveness		
		°F	°C	cfm	L/s		Sensible %	Latent %	Total %
Heating	Low	35	1.7	75	35	88	62	44	55
	Medium	35	1.7	115	54	120	59	41	53
	High	35	1.7	150	71	171	56	37	50
Cooling	Low	95	35	75	35	88	62	40	50
	Medium	95	35	115	54	120	59	37	46
	High	95	35	150	71	171	56	33	42

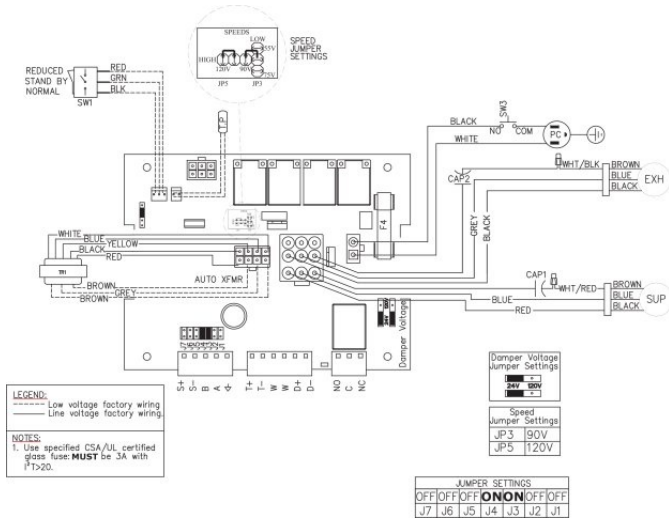
## Dimensions



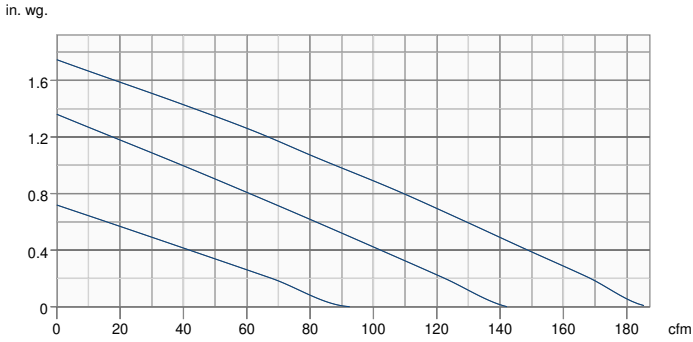
A: 23 3/4 (604)    B: 2 1/8 (55)    C: 17 1/4 (438)    D: 16 1/4 (414)

Dimensional information is in inches (mm)

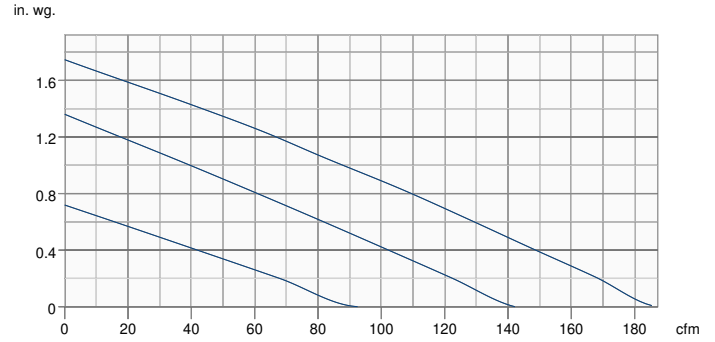
## Wiring



## Supply - Performance curve



## Extract - Performance curve



Unit	Supply	Extract
Required air flow	-	-
Working air flow	-	-
Required external pressure	-	-
Working air pressure	-	-
Power	-	-
Current	-	-
Air density	0.075 lb/ft³	
Fan control - RPM	-	-

## Accessories

ECO-Feel® Auto IAQ Control (414729)  
 RTS-W Wireless Timer (414920)  
 FIDT 6 Insulated Flex Duct (411064)  
 Filter, MERV6, 150 cfm, Repl. kit (414647)  
 MGE 6 Metal Exhaust Grill (411371)

ECO-Touch® Auto IAQ (414727)  
 COM6P Supply and Exhaust Hoods (40222)  
 ADC 6 Shut-off Damper w Motor (44967)  
 Filter, MERV8, 150 cfm, Repl. kit (414924)  
 MGS 6 Metal Supply Grill (411242)

## Documents

427502 SER150 SPEC SHEET EN.PDF  
 E400026 SHR-SER150-R DIMENSIONAL SUBMITTAL.PDF  
 427470 SER150 IOM EN FOLDER.PDF  
 SER150 SERVICE MANUAL.PDF