

This Owner's Manual is provided and hosted by [Appliance Factory Parts](#).



# Black & Decker HNV220B Owner's Manual

[Shop genuine replacement parts for Black & Decker  
HNV220B](#)



[Find Your Black & Decker Vacuum Cleaner Parts - Select From 339 Models](#)

----- Manual continues below -----

# BLACK+ DECKER™

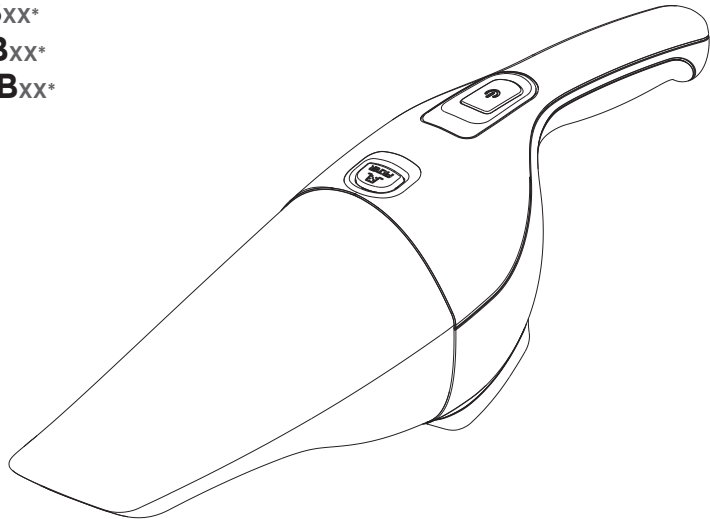
## CORDLESS HAND VACS INSTRUCTION MANUAL

### CATALOG NUMBERS

HNV115B<sub>XX</sub>\*

HNV215B<sub>XX</sub>\*

HNV220B<sub>XX</sub>\*



**Thank you for choosing BLACK+DECKER!**

**PLEASE READ BEFORE RETURNING THIS PRODUCT FOR ANY REASON.**

**SAVE THIS MANUAL FOR FUTURE REFERENCE.**

\*XX is a placeholder for the two-digit number at the end of your vacuum's catalog number that designates your vacuum's color.

## SAFETY GUIDELINES - DEFINITIONS

It is important for you to read and understand this manual. The information it contains relates to protecting **YOUR SAFETY and PREVENTING PROBLEMS**. The symbols below are used to help you recognize this information.

**⚠ DANGER:** Indicates an imminently hazardous situation which, if not avoided, will result in death or serious injury.

**⚠ WARNING:** Indicates a potentially hazardous situation which, if not avoided, could result in death or serious injury.

**⚠ CAUTION:** Indicates a potentially hazardous situation which, if not avoided, may result in minor or moderate injury.

**NOTICE:** Used without the safety alert symbol indicates potentially hazardous situation which, if not avoided, may result in property damage.

## IMPORTANT SAFETY INSTRUCTIONS

When using an electrical appliance, basic precautions should always be followed, including the following:

### READ ALL INSTRUCTIONS BEFORE USING THIS APPLIANCE.

**⚠ WARNING:** Read all safety warnings and all instructions. Failure to follow the warnings and instructions listed below may result in electric shock, fire and/or serious injury.

**⚠ WARNING:** Some household dust contains chemicals known to the State of California to cause cancer, birth defects or other reproductive harm such as asbestos and lead in lead based paint.

**⚠ WARNING:** To reduce the risk of fire, electrical shock or injury:

- **⚠ WARNING:** To reduce the risk of electric shock – Do not use outdoors or on wet surfaces.
- Do not allow to be used as a toy. Close attention is necessary when used by or near children.
- Use only as described in this manual. Use only manufacturer's recommended attachments.
- Do not use with damaged cord or plug. If appliance is not working as it should, has been dropped, damaged, left outdoors, or dropped into water, return it to a service center.
- Do not pull or carry by cord, use cord as a handle, close a door on cord, or pull cord around sharp edges or corners. Do not run appliance over cord. Keep cord away from heated surfaces.
- Do not unplug by pulling on cord. To unplug, grasp the plug, not the cord.
- Do not handle charger, including charger plug, and charger terminals with wet hands.
- Do not put any object into openings. Do

not use with any opening blocked; keep free of dust, lint, hair, and anything that may reduce air flow.

- Keep hair, loose clothing, fingers, and all parts of body away from openings and moving parts.
- Use extra care when cleaning on stairs.
- Do not use to pick up flammable or combustible liquids, such as gasoline, or use in areas where they may be present.
- Do not pick up anything that is burning or smoking, such as cigarettes, matches, or hot ashes.
- Do not use without dust bag and/or filters in place.
- Do not charge the unit outdoors.
- Use only the charger supplied by the manufacturer to recharge.
- Do not incinerate the appliance even if it is severely damaged. The batteries can explode in a fire.
- This appliance is intended for household use only and not for commercial or industrial use.
- Shock Hazard. To protect against risk of electrical shock, do not put unit or charging base in water or other liquid.
- Do not allow the cord to hang over the edge of a table or counter or touch hot surfaces. The unit should be placed or mounted away from sinks and hot surfaces.
- Plug the charger directly into an electrical outlet.
- Use the charger only in a standard electrical outlet (120V/60Hz).
- Unplug the charger from outlet before any routine cleaning or maintenance.
- Do not look into the air vents when the unit is switched on, as sometimes there is a possibility of small debris being discharged from the air vents, especially after cleaning / replacement of the filters as debris inside the unit can be disturbed.

## ADDITIONAL SAFETY WARNINGS

- Prevent unintentional starting. Ensure the switch is in the off-position before connecting to battery pack, picking up or carrying the appliance.** Carrying the appliance with your finger on the switch or energizing appliance that have the switch on invites accidents.
- Recharge only with the charger specified by the manufacturer.** A charger that is suitable for one type of battery pack may create a risk of fire when used with another battery pack.
- Do not use a battery pack or appliance that is damaged or modified.** Damaged or modified batteries may exhibit unpredictable behavior resulting in fire, explosion or risk of injury.
- Do not expose a battery pack or appliance to fire or excessive temperature.** Exposure to fire or temperature above 266°F (130°C) may cause explosion.
- Have servicing performed by a qualified repair person using only identical replacement parts.** This will ensure that the safety of the product is maintained.

**⚠ WARNING:** Do not attempt to modify or repair the appliance

## SAVE THESE INSTRUCTIONS

### Symbols

- The label on your tool may include the following symbols. The symbols and their definitions are as follows:

V..... volts

A..... amperes

Hz..... hertz

W..... watts

min ..... minutes

~ or AC..... alternating current

— or DC .. direct current

n<sub>o</sub>..... no load speed

Ⓜ ..... Class I Construction

(grounded)

Ⓧ ..... earthing terminal

⚠ ..... safety alert symbol

Ⓜ ..... Class II Construction

(double insulated)

.../min or rpm...revolutions or reciprocation

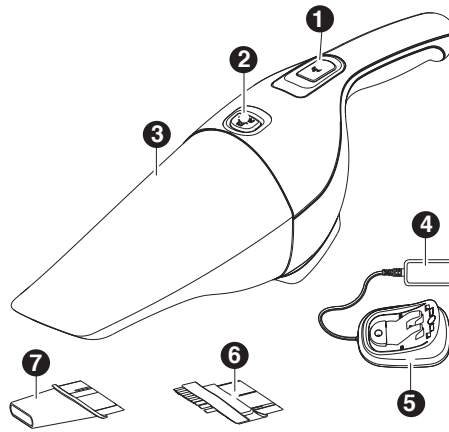
per minute

### FUNCTIONAL DESCRIPTION

- On/off switch
- Bowl release button
- Dust bowl
- Charger
- Charging bracket

### HNV220B Models Only

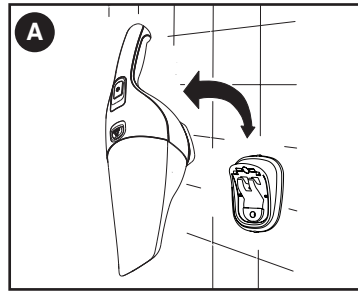
- Brush tool
- Crevice tool



### Wall Mounting - Figure A

The product can be attached to a wall to provide a convenient storage and charging point for the appliance. When mounting to a wall, make sure the mounting method is suitable for the wall type and is appropriate to the weight of the appliance.

- Mark the location of the charger bracket (5) screw holes on the wall (within reach of an electrical outlet for charging the vacuum while it is on the wall bracket).
- Fix the mounting bracket to the wall using appropriate screws and plugs for the type of wall, and weight of the appliance.
- Hang the appliance by placing the opening of the vacuum base over the hooks in the wall mount charging bracket.



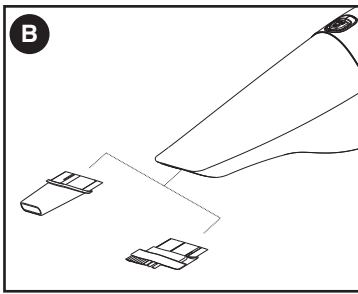
### Assembly Accessories - Figure B (HNV220B Models Only)

Your hand vac may be supplied with some of the following accessories:

- A brush tool (6) for furniture and stairs.
- A crevice tool (7) for confined spaces.

### Fitting

- Insert the appropriate accessory into the front of the appliance as show in **Figure B**.
- Make sure the accessory is fully pushed in.



### Charging the battery

**⚠ WARNING:** For use only with the supplied charger.

- Before first use, the battery must be charged for at least 10 hours.
- Place the appliance on the charging bracket whenever it is not in use.

**⚠ WARNING:** Before charging, be sure to empty all contents and dry thoroughly if needed to avoid damage to your appliance.

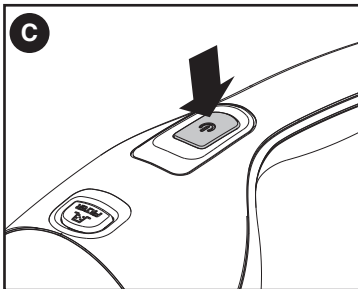
- Make sure the appliance is switched off.
- Place the appliance on the charging bracket (5).
- Plug in the charger.
- Leave the appliance to charge for at least 9 hours.

**NOTE:** While charging, the charger may become warm. This is normal and does not indicate a problem. The appliance can be left connected to the charger indefinitely.

**⚠ WARNING:** Do not charge the battery at ambient temperatures below 50 °F or above 104 °F.

### Switching On - Figure C

- To switch the appliance on, depress the on/off button (1). Once the button is released the vacuum will turn off.



### Dry pick up

- For everyday spills of dry material.
- Do not fill the dust bowl (3) beyond the end of the intake chute.

### Optimizing the suction force

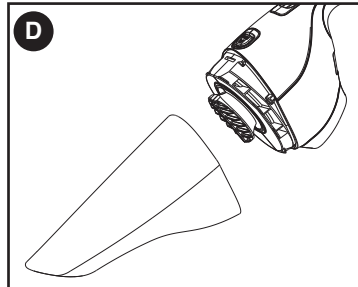
In order to keep the suction force optimised, the filters must be cleared regularly during use.

### EMPTYING AND CLEANING THE PRODUCT.

#### Removing the dust bowl and filters - Figures D & E

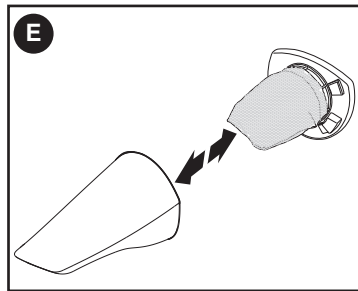
**⚠ WARNING:** The filter is reusable and should be cleaned regularly.

- Press the bowl release button (2) and pull the dust bowl (3) straight off as shown in Figure D.



- While holding the dust bowl over a bin or sink, pull out the filter (8) to empty the contents as shown in Figure E.
- To replace the dust bowl, push it back onto the handle until it clicks firmly into place.

**⚠ WARNING:** Never use the appliance without the filters. Optimum dust collection will only be achieved with a clean filter.



#### Cleaning the dust bowl and filter

- The dust bowl and filter can be washed in warm soapy water.
- Make sure the filter and the dust bowl are dry before re-fitting.

#### Replacing the filters

The filters should be replaced every 6 to 9 months and whenever worn or damaged. Replacement filters (catalog number EVF100) are available from your BLACK+DECKER dealer.

## MAINTENANCE

Use only mild soap and damp cloth to clean the vac. Never let any liquid get inside the vac; never immerse any part of the vac into a liquid.

**⚠ WARNING:** Make sure the vacuum is completely dry before using it.

**IMPORTANT:** To assure product SAFETY and RELIABILITY, repairs, maintenance and adjustment (other than those listed in this manual) should be performed by authorized service centers or other qualified service organizations, always using identical replacement parts.

### The RBRC™ Seal

The RBRC® (Rechargeable Battery Recycling Corporation) Seal on the lithium-ion batteries (or battery packs) indicates that the costs to recycle these batteries (or battery packs) at the end of their useful life have already been paid by BLACK+DECKER. In some areas, it is illegal to place spent lithium-ion batteries in the trash or municipal solid waste stream and the Call 2 Recycle® program provides an environmentally conscious alternative. Call 2 Recycle, Inc., in cooperation with BLACK+DECKER and other battery users, has established the program in the United States and Canada to facilitate the collection of spent lithium-ion batteries. Help protect our environment and conserve natural resources by returning the spent nickel cadmium, nickel metal hydride or lithium-ion batteries to an authorized BLACK+DECKER service center or to your local retailer for recycling. You may also contact your local recycling center for information on where to drop off the spent battery. RBRC® is a registered trademark of Call 2 Recycle, Inc.

## Accessories

Recommended accessories for use with your appliance are available from your local dealer or authorized service center.

**⚠ WARNING:** The use of any accessory not recommended for use with this appliance could be hazardous.