

Spare Parts Catalogue

Dishwashers \ 06 Generation
Type: DW952
Model: D1716 US Bisque Bi

Prod. No: 107171605
February 24th 2007

AM Appliances Group

P.O. Box 851805 • Richardson • TX 75085-1805
789 N. Grove Road • Suite 103 • Richardson • TX 75081

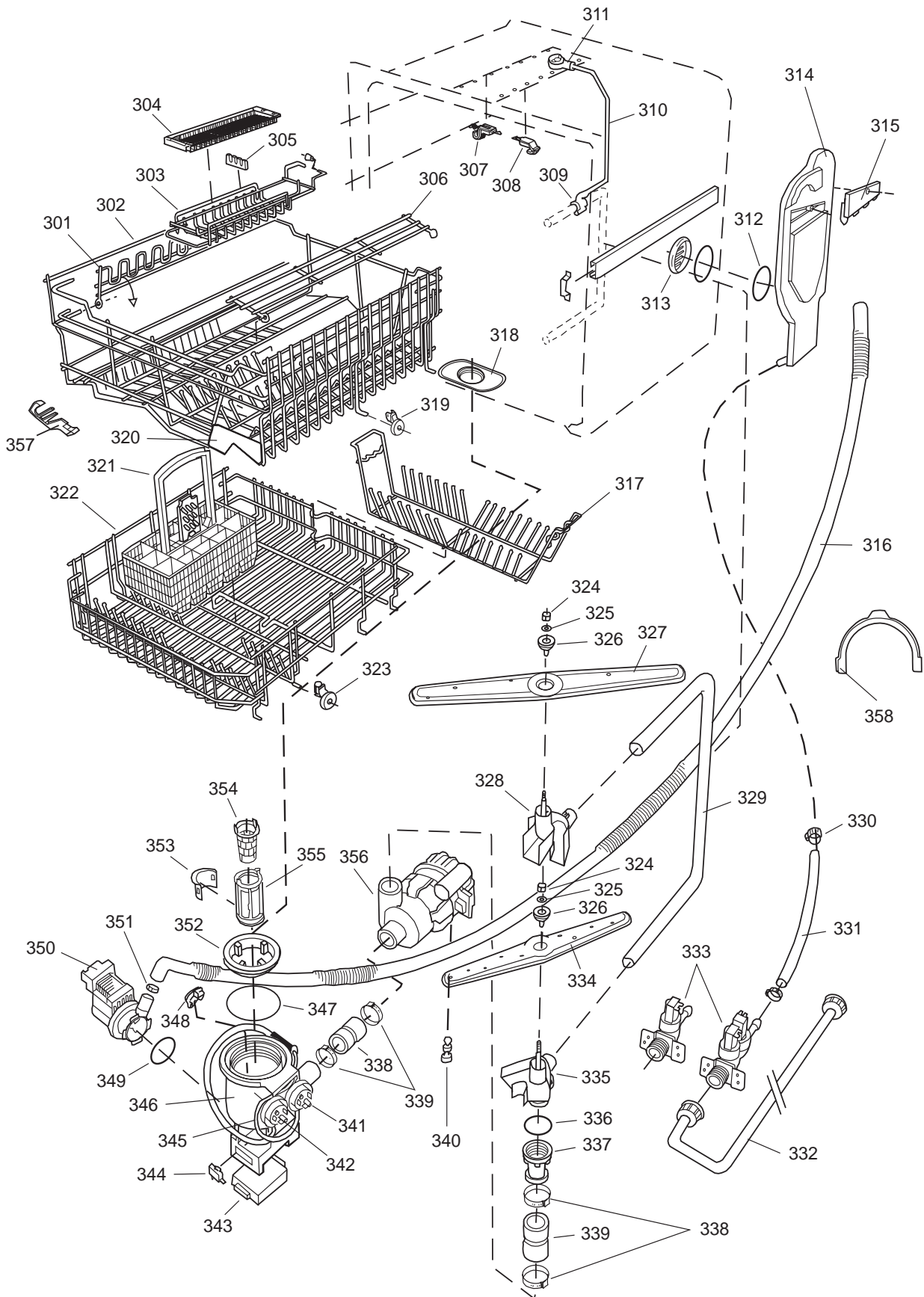
Datum

2003-03-24

Date

DISKSYSTEM

DISHWASHING SYSTEM



Dishwashing system

ASKO, D1716 US - Bisque Bi (DW952)

Pos	Spare part No.	Description	Qty	Comment
301	8071337-36	Cup Shelf Wine Glass 05/06 DW	1 Pc's	
302	8801236-36	Upper Basket Gray	1 Pc's	
302	8801199-36	Rack Upper 05 & 06 DW	1 Pc's	with cup shelf
306	8071336-36	Cup Shelf 05/06 DW	1 Pc's	
313	8057536-77	Lockring Airbreak Gray	1 Pc's	
314	8057514	Sub To 8801234	1 Pc's	
316	8070304	Drain Hose 05/06 DW	1 Pc's	
316	8075484	OUTLET HOSE NON RETURN VALVE	1 Pc's	
316-a	8052239	Hose Clamp Squeeze	1 Pc's	
316-a	8073403	Non Return Valve	1 Pc's	
316-b	8053642	Hose Clip	1 Pc's	
318	8059740	Strainer Upper 05/06 DW	1 Pc's	
319	8058498-77	Wheel Upper Basket 05/06 DW	4 Pc's	
320	8057506-77	Knife Stop	1 Pc's	
321	8801089-77	SUBS to 8801239-77 per factory	1 Pc's	
322	8801200-36	Lower Basket 05/06 DW	1 Pc's	
323	8009516-77	sub to 8078641-77	8 Pc's	Sold in Pkg of 10
324	8901262	Nut for Spray Arm 05	2 Pc's	
325	8052095	Ceramic Washer Spray Arm 05/0	2 Pc's	
326	8057070-77	Spray Arm Insert 05/06 DW	2 Pc's	
327	8072695	Spray Arm - Upper 05/06 DW	1 Pc's	
328	8057068-77	Spray Pipe Bearing Upper	1 Pc's	
329	8057063	Spray pipe inner 05	1 Pc's	
330	8052189	Hose Clamp Squeeze	2 Pc's	
331	8070622	Ruber Hose	1 Pc's	
332	8073879	Fill hose quick connect	1 Pc's	
333	8073995	Water valve single. Easy Insta	1 Pc's	
333	8072121	Fill Valve Single 05/06 DW.	1 Pc's	
333-a	8902087	Screw Plastic Housing 20 Torx	2 Pc's	
334	8072692	Spray Arm - Lower 05/06 DW	1 Pc's	
335	8057067-77	Lower Washarm Support 05/06 DW	1 Pc's	
336	8901755	O-Ring Seal	1 Pc's	
337	8057069	Retainer Nut SprayArm 05/06 DW	1 Pc's	
338	8052097	Hose Clamp Circ. Pump 05/06	4 Pc's	
339	8057484	Hose Circ. Pump 05/06 DW	2 Pc's	
340	8055095	BUFFER Circumpump 03/04 DW	1 Pc's	
341	8071024	Level Switch 05/06 DW	1 Pc's	
343	8057053	Subs to 8075110	1 Pc's	
344	8060068	Micro SwitchOverfill 05/06 DW	1 Pc's	
345	8058500	Hose Pressure Sw. 05/06 DW	1 Pc's	
346	8801123	Replaces 8075197-77. Sump 05/0	1 Pc's	
347	8058503	O-Ring Sump 05/06 DW	1 Pc's	
348	8057487-79	Sump Plug DW 05/06 Cleanout	1 Pc's	
349	8002584	O-Ring Drain Pump 05/06 DW	1 Pc's	
350	8072032	Drain Pump 05/06 DW	1 Pc's	
351	8052239	Hose Clamp Squeeze	1 Pc's	
352	8057488	Locking ring bottom well 05	1 Pc's	
353	8058454	Cover Str. Basket 05/06 DW	1 Pc's	
354	8057972-77	Strainer Basket Grey 05/06 DW	1 Pc's	
355	8057486-77	Filter fine 05 & 06 DW	1 Pc's	
356	8071250	Repl by 8801312 Circ. Pump 05/06 DW	1 Pc's	Need clamps 4x 8060266, hoses 2x 8057484 also
356-a	8075380	capacitor D3000	1 Pc's	
357	8071214-77	Knife Holder 05/06 DW	2 Pc's	
358	8050805	GOOSE NECK for DRAIN HOSE	1 Pc's	
358	8072528-77	Holder Outlet Hose	1 Pc's	

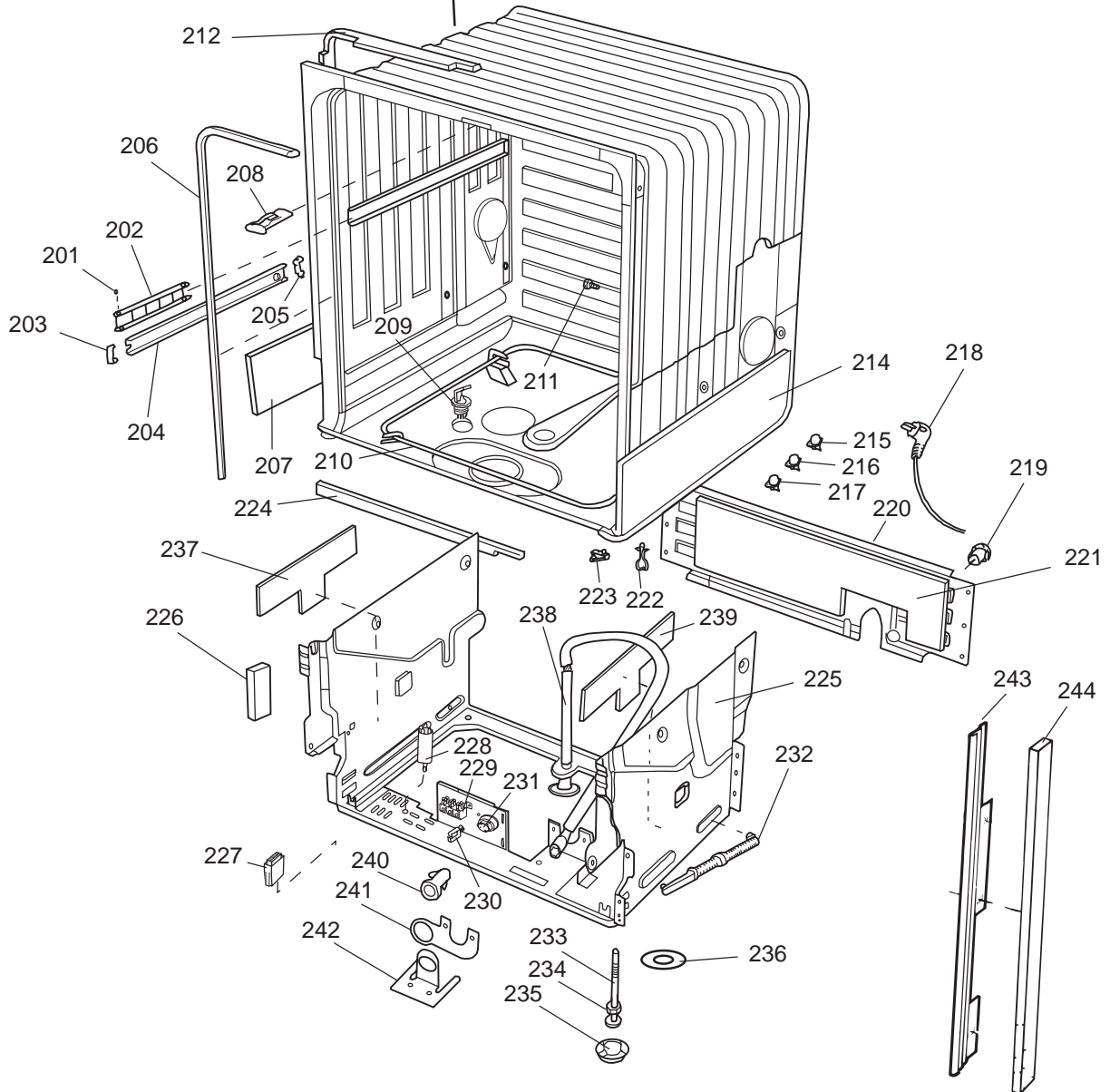
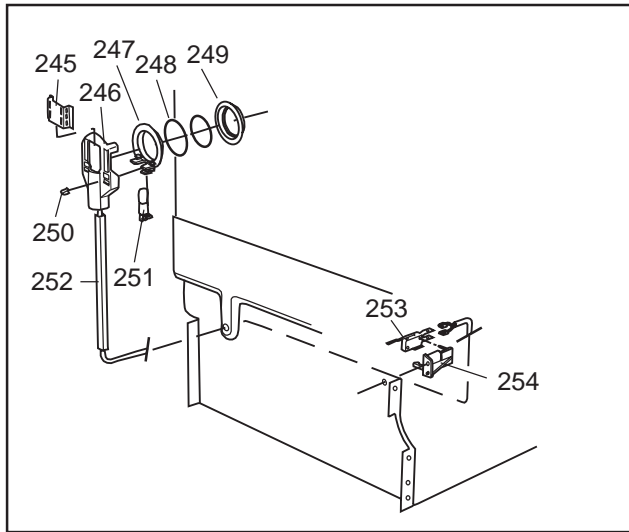
Datum

2003-03-24

Date

BEHÅLLARE

CONTAINER AND RELATED PARTS



Container and related parts

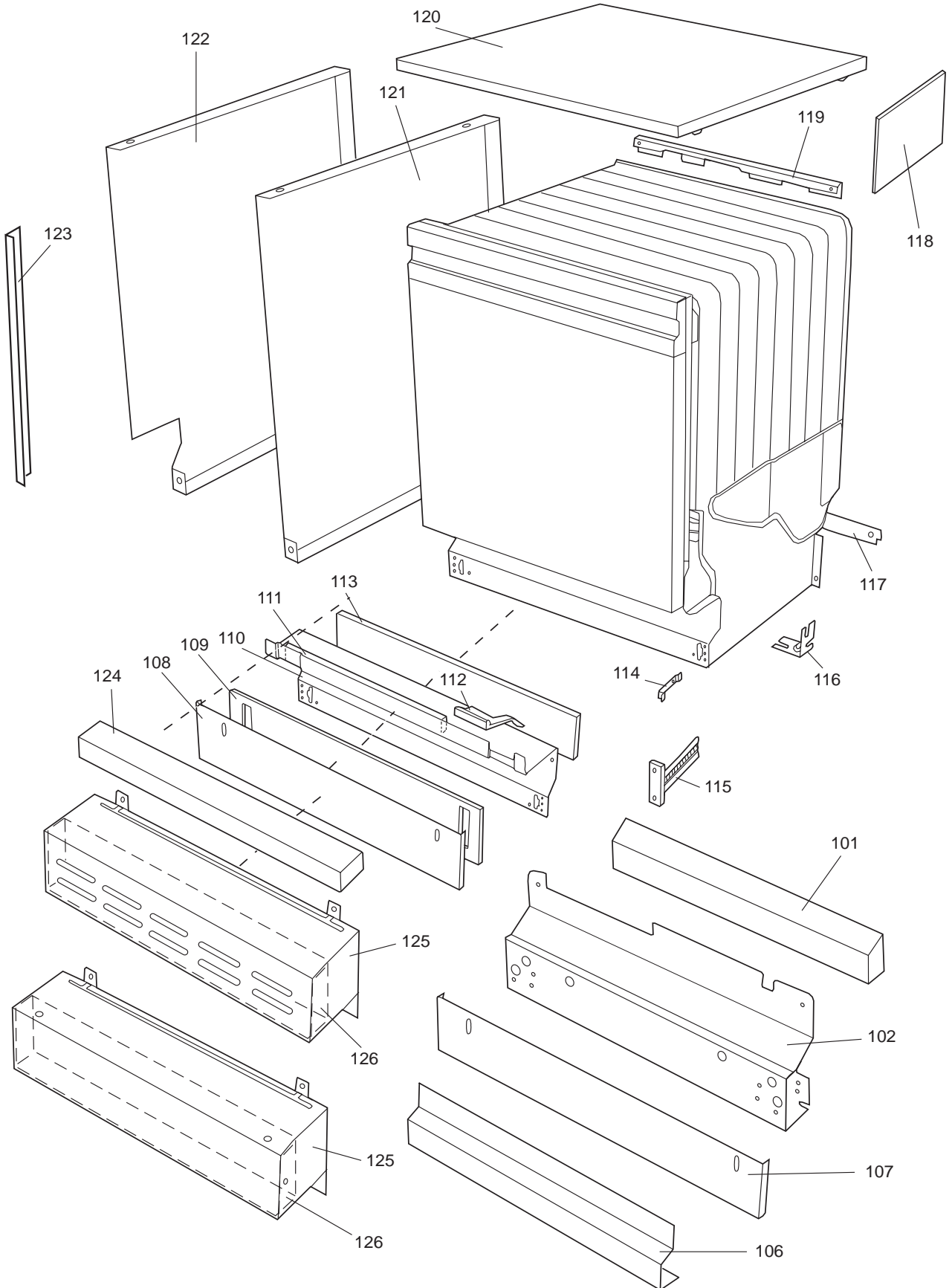
ASKO, D1716 US - Bisque Bi (DW952)

Pos	Spare part No.	Description	Qty	Comment
201	8057977	Bearing Upper Rail 05/06 DW	8 Pc's	
202	8058638-77	Ball Holder Upper Rail DW	2 Pc's	
203	8057979-77	Rack Stop Grey 05/06 DW	2 Pc's	
204	8057052	Guide Rail '05 '06 DW	2 Pc's	
205	8057978-77	Rail Stop - Back Grey 05/06 DW	2 Pc's	
206	8057489	Tub Seal 05/06 DW	1 Pc's	
208	8801098	Lock Catch Kit 05'06 D/W	1 Pc's	
210	8057077	Heating Element DW 05/06 1400W	1 Pc's	
210	8002370	Protective Collar	2 Pc's	
211	8901110	Screw w/O-Ring DW 05/06 25-T	4 Pc's	
212	8070613	Sealing Strip Casing	1 Pc's	
215	8059896	T-Stat 05/06 30-70C DW	1 Pc's	
216	8002579	T-Stat 05/06 DW Overheat	1 Pc's	
217	8058373	Thermostat 05	1 Pc's	
218	8074043	Power supply cord	1 Pc's	
220	8057527	Rear plate cover	1 Pc's	
220-a	8902357	Screw	5 Pc's	
222	8070142	Cable holder rear 05	1 Pc's	
223	8058495	Cable holder door 05	1 Pc's	
225	8074566	Bottom Outer	1 Pc's	If equipt with 3-feet
225	8057523	Bottom and Side support '05	1 Pc's	
229	8050251	Terminal Block DW All	1 Pc's	
229-a	8900357	Screw terminal block	1 Pc's	
230	8059991	Cable holder supply line 05	1 Pc's	
231	8006948	Grommet	1 Pc's	
232	8058491-77	Door Spring 05/06 for 0-7 lbs	2 Pc's	
233	8074877	Foot	2 Pc's	
233	8057062	Subs to 8074877	4 Pc's	
234	8901156	Nut Levelling Legs	4 Pc's	
235	8051957	Slide foot 02 DW	3 Pc's	
236	8072119	Washer	2 Pc's	
238	8073647	Foot Adjustable from Front Cpl	1 Pc's	
243	8059761-84	Strip Side Left Bisque	1 Pc's	
243	8059762-84	Strip Side Right Bisque	1 Pc's	
243-a	8900646	Screw 20 Torx SS	4 Pc's	
244	8070614	Insulationfill strip 05&06 DW	2 Pc's	

Datum
2003-03-24
Date

YTTERHÖLJE

CASING AND RELATED PARTS



Casing and related parts

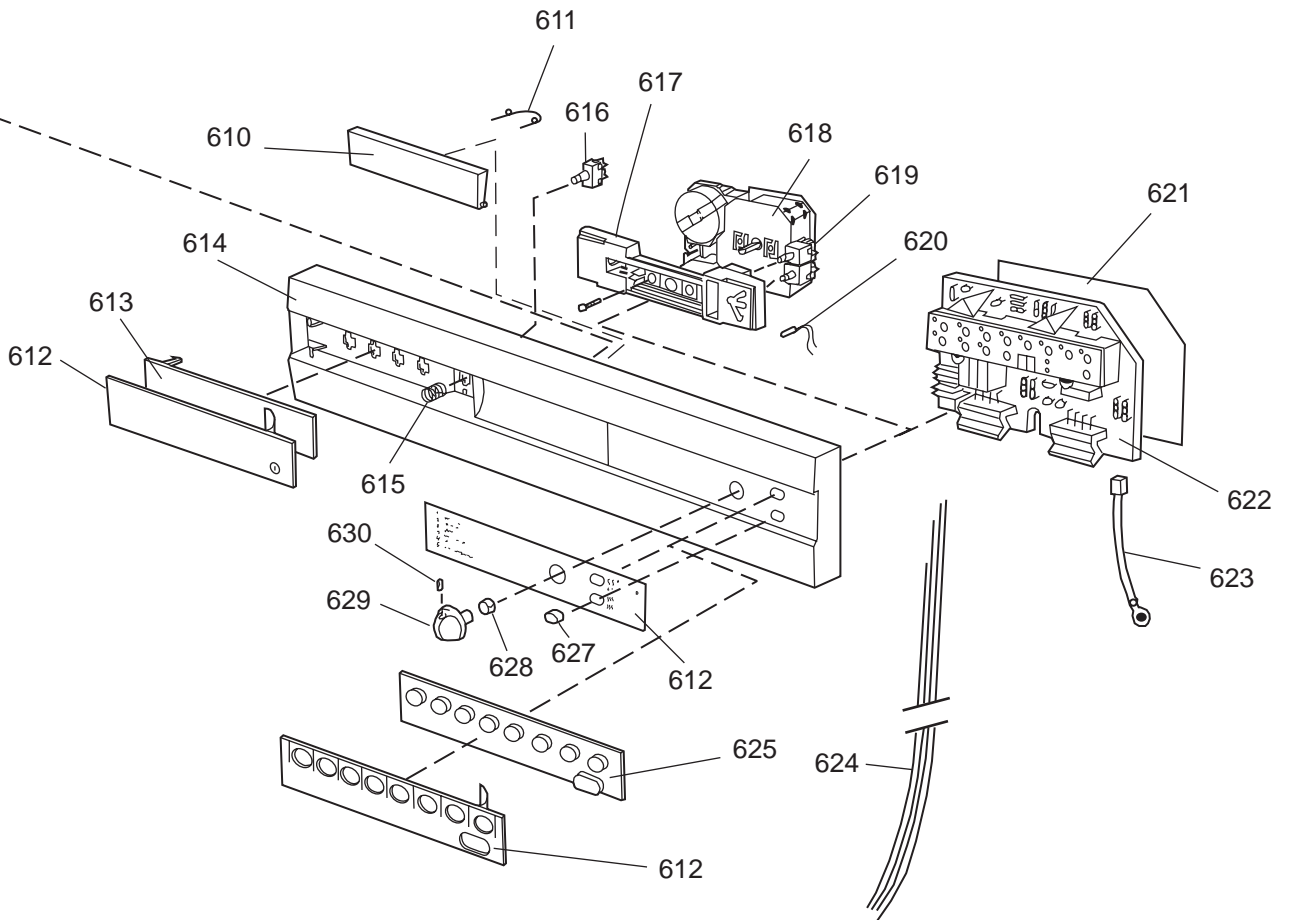
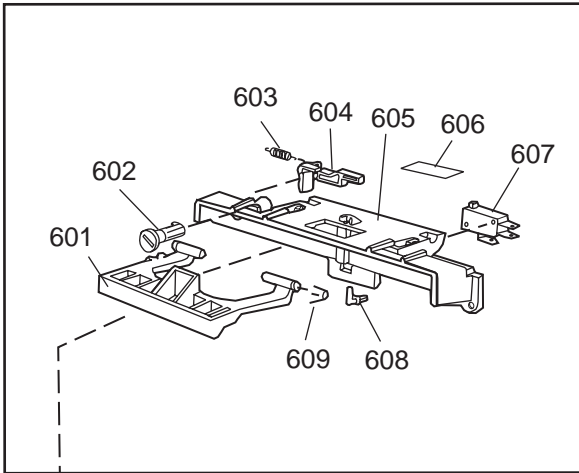
ASKO, D1716 US - Bisque Bi (DW952)

Pos	Spare part No.	Description	Qty	Comment
108	8059758-84	Kick Plate Bisque	1 Pc's	
108-a	8900944	Screw Toe Kick 20 Torx	2 Pc's	
109	8070743	Insulation Toe-Kick 05/06 DW	1 Pc's	
110	8073707	Proection Plate	1 Pc's	
110-a	8902357	Screw	4 Pc's	
111	8060041	Sealing strip protect plte 05	1 Pc's	
112	8058486	Drip Guard Overflow 05/06 DW	1 Pc's	
113	8058353	Sound Absorb Guard	1 Pc's	
114	8073481-49	Spring Kicking Plate L. Gray	2 Pc's	
115	8057549	Bracket/Toe Kick 05/06 DW	2 Pc's	
124	8070615	Sealing Lower Panel DW 05/06	1 Pc's	
125	8057100	LOWER COVER	1 Pc's	
125	8057100-84	Lower Cover Bisque 06 DW	1 Pc's	saknas
125-a	8900352	Screw Access Panel 05/06	2 Pc's	

Datum
2003-03-24
Date

PANEL

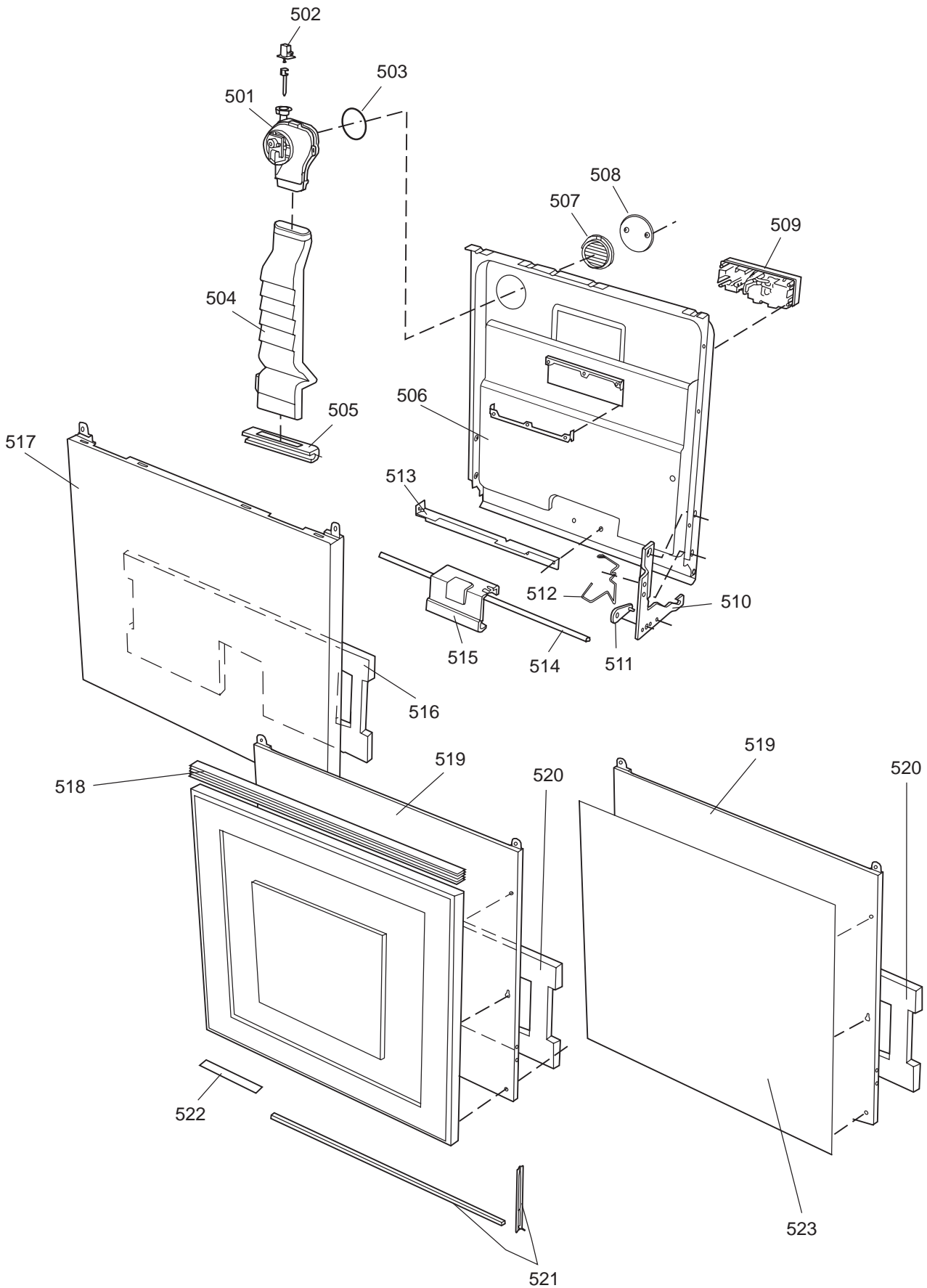
CONTROL PANEL AND RELATED PARTS



Control panel and related parts

ASKO, D1716 US - Bisque Bi (DW952)

Pos	Spare part No.	Description	Qty	Comment
601	8057541-84	HANDLE BISQUE DW95	1 Pc's	
602	8057545	Rotary catch child safety '05	1 Pc's	
603	8057546	SPRING SafetyCatch 05/06 DW	1 Pc's	
604	8057544	Arm SafetyCatch 05/06 DW	1 Pc's	
605	8057539	Bracket 4 Switch/Handle 05/06	1 Pc's	
605-a	8902085	Screw 20T for Plastic	2 Pc's	
606	8071098	Cover for Micro Switch	1 Pc's	
607	8055473	Door Switch - DW 05/06	1 Pc's	
608	8057542	Actuator Doorswitch 05/06 DW	1 Pc's	
609	8007078	Spring 02 Handle DW	1 Pc's	
612	8073405-84	Decor Insert D1716	1 Pc's	
614	8071680-84	Front Panel ASKO CPL Bisque	1 Pc's	
614	8057538-84	LID MAIN SWITCH ASKO BISQUE	1 Pc's	
617	8057540	Bracket program timer '05	1 Pc's	
617-a	8900944	Screw Toe Kick 20 Torx	2 Pc's	
618	8060017	Timer 05/06 DW	1 Pc's	
618-a	8900944	Screw Toe Kick 20 Torx	2 Pc's	
618-b	8901413	Lock Washer laundry tops	2 Pc's	
619	8057941	Switch temp hi/lo DW	2 Pc's	
624	8073436	Cable harness D1716	1 Pc's	
627	8057982-84	PUSH BUTTON ASKO BISQUE DW95	2 Pc's	
628	8056521	Clip Knobs - Mechanical	1 Pc's	
629	8801198-84	Control Knob Bisque 1706/1716	1 Pc's	
690	8075566	INSTR. D/WASHER USA DW95 ES	1 Pc's	
690	8073096	INSTR. GENERAL D/WASHER USA	1 Pc's	
690	8075564	INSTR. D/WASHER USA DW95 ENG	1 Pc's	
690	8075565	INSTR. D/WASHER USA DW95 FR	1 Pc's	



Door and related parts

ASKO, D1716 US - Bisque Bi (DW952)

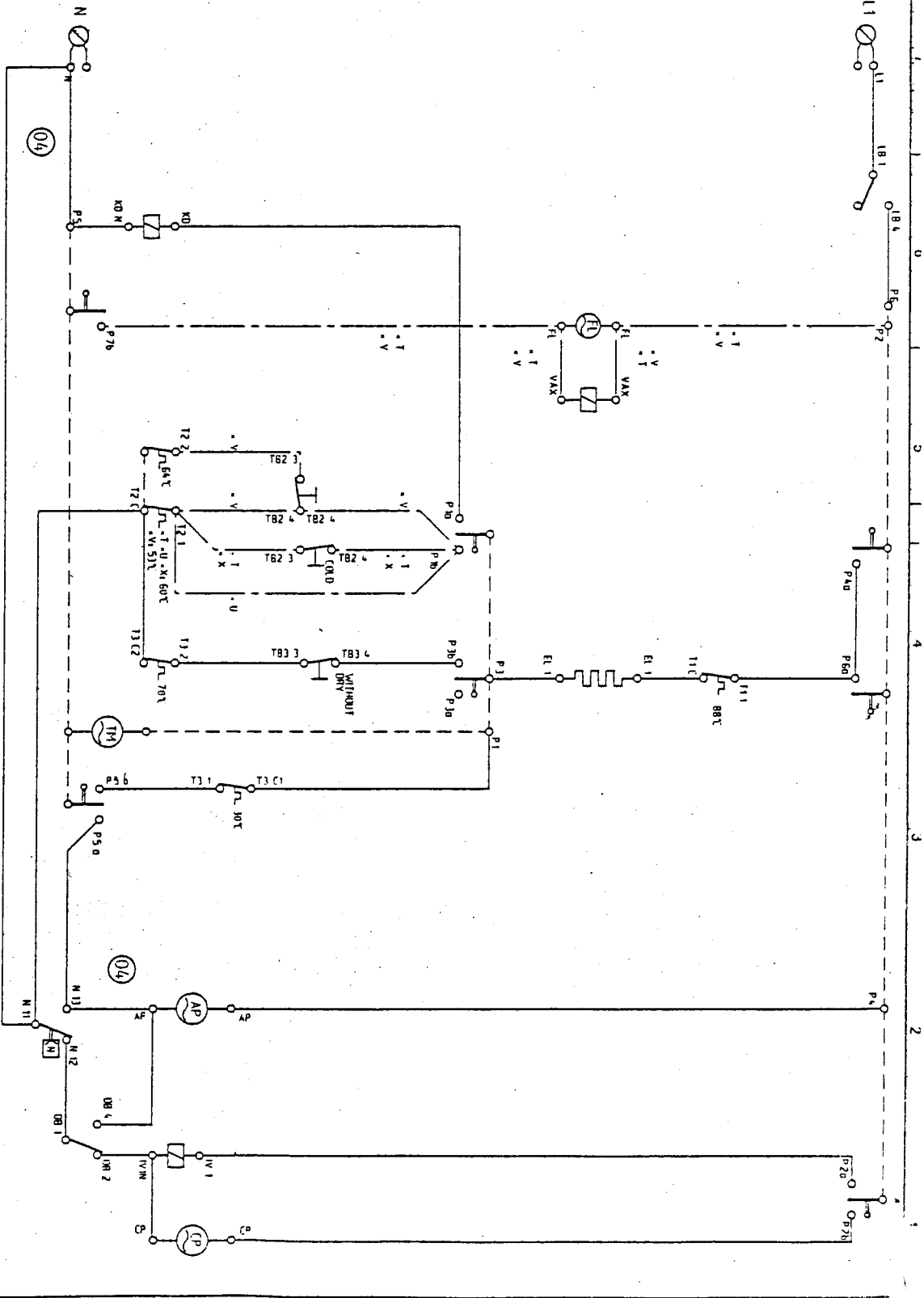
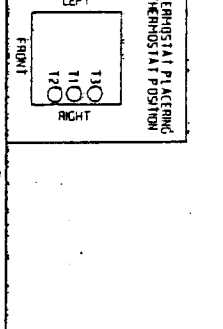
Pos	Spare part No.	Description	Qty	Comment
501	8052778	WAX MOTOR DW 05/06	1 Pc's	
501	8060021	Turbo Fan Complete 05/06 DW	1 Pc's	
503	8058501	O-Ring Turbo Fan Dry 05/06 DW	1 Pc's	
504	8057963-S	Air Channel Short	1 Pc's	
505	8071078-0	Exhaust Nozzle White 05/06 DW	1 Pc's	
505	8072729-0	Air Pipe	1 Pc's	
506	8801118	Inner Door 05/06 w/Fan DW	1 Pc's	
507	8057964	Locking ring turbo fan 05	1 Pc's	
507-a	8902085	Screw 20T for Plastic	2 Pc's	
508	8058484	SS Coverplate Turbo Fan DW	1 Pc's	
508-a	8902085	Screw 20T for Plastic	2 Pc's	
509	8801140-77	Combi Disp.	1 Pc's	
510	8057524	Hinge Right DW 05/06	1 Pc's	
510	8057525	Hinge left DW 05/06	1 Pc's	
510-a	33500262	Nut - Term Block	1 Pc's	
510-b	8057530	Screw hinge 05	1 Pc's	
510-c	8902120	Screw 20 Torx Machine	2 Pc's	
511	8057948	Slide washer hinge bearing 05	2 Pc's	
512	8073612	Bracket for Harness	1 Pc's	
514	8060254	Lower SealInner Door 05/06 DW	1 Pc's	
515	8057985	Outer Door Lower Stay 05/06 DW	1 Pc's	
515-a	8902357	Screw	2 Pc's	
516	8060080	SOUND ABSORP. INNER DOOR COMBI	1 Pc's	
519	8074801	DOOR OUTER PART SHORT	1 Pc's	
519	8074801-84	Outer Door Bisque DW1716	1 Pc's	

RESISTANCE VALUES AT 20°C (1) 68°F (5)°F
RESISTANZ WERTEN BEI 20°C (1) 68°F (5)°F

- AP1 AVIUPSPUMP
DRAH PUMPE
25,5 ohm
- CP1 CHECK AUFSPUMP
CHECK AUF PUMPE
MARK. 10,5 ohm
KONV. 14,5 ohm
- EL1 HEATING ELEMENT
HEIZELEMENT
1400W, 10,0 ohm
1770W, 8,2 ohm
- FL1 FLAKT
CEBLASE
0,26 kohm
- IV1 NR DP SVENIT
NR ET YA VE
0,93 kohm
- KD1 KONDOSEBRAE
CONDENSEUR
0,21 kohm
- LB1 LUKCBBRYTARE
DOOR SWITCH
TURSCHA TERN
LUCKA
- LU1 LUCKA
DOOR
- LV1 INVABBRYTARE
LEVEL SWITCH
MEVAUSCHALTER
PROGRAMMIERER
- PI1 THERM
THERM
- TH1 THERMOTON
THERMOTON
2,0 kohm
- TV1 THERMOTON
THERMOTON
2,0 kohm
- VAK1 VAKUUMDRUCKSCHALTER
VAKUUMDRUCKSCHALTER
1,5-1,0 kohm
- OB1 OBERFLACHENTHERMOTON
OBERFLACHENTHERMOTON

INTERNE EDNING
INTERNAL CONNECTION

ALTERNATIVT UTFORAND
ALTERNATIVE DESIGN



05	MODEL 1706, 1716 IMPL.	M	00 06						
04	TYPE DW95,S REMOVED	M	97 50	Article No.					
04	WIRING MODIFIED	M	97 50	Scale:					
04	RESISTANCE VALUES IMPL.	M	97 50	Name of Item					
03	MODELLER 1375&1385 INF.	M	96 37	Description (English)					
02	TYP DW95,1 INF.FORD	M	95 39	01 Motor, dimensions, 1 yw, etc.					
01	TERMOST.MARKN. S FEL	M	95 10	Developed by					
				Drawn by					
				Iss by Dept					
				Rev Ind					
				80 706 36					
				05					
				80 706 35					
				05					