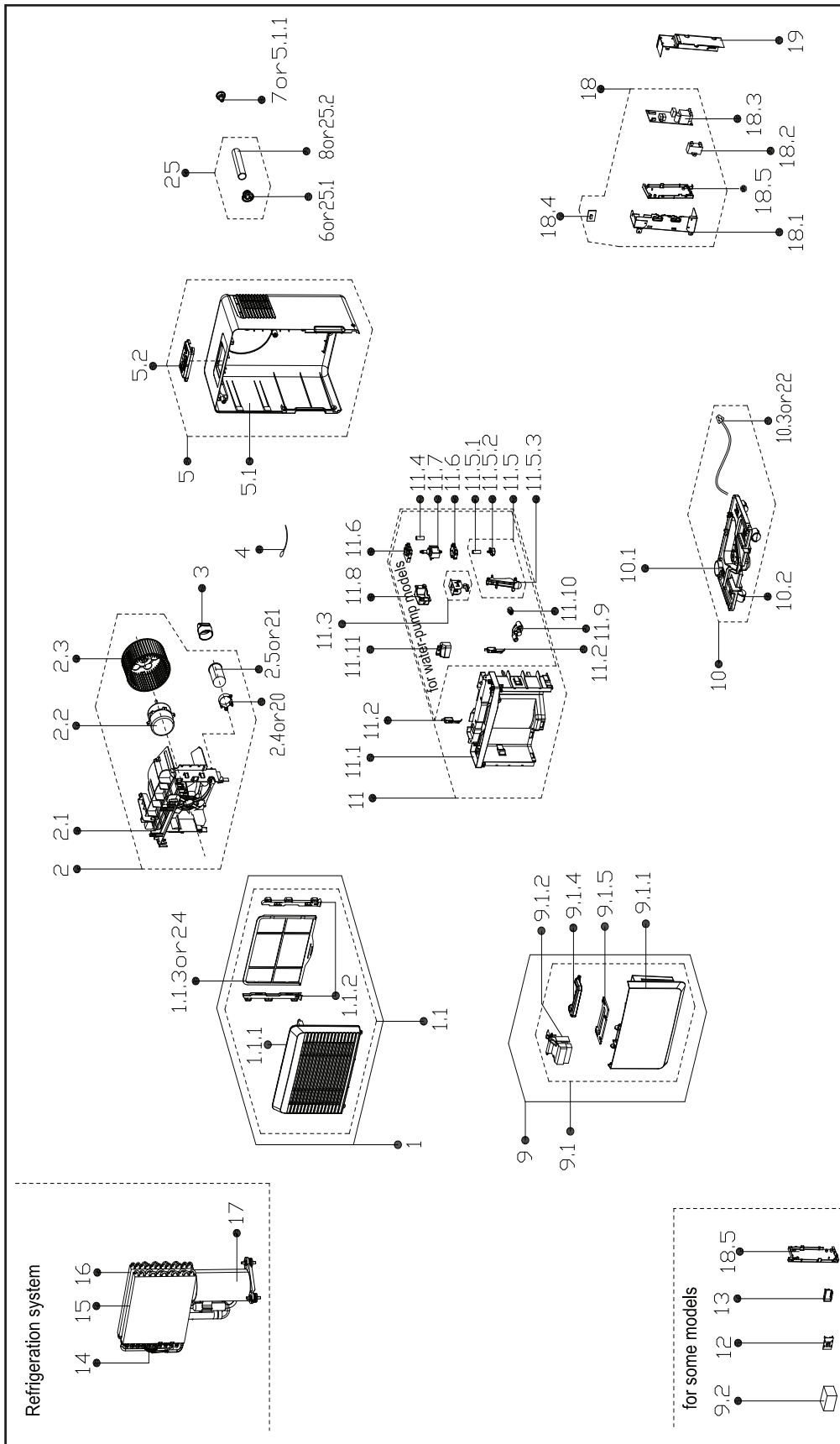

Comfort-Aire®

Portable Dehumidifier with Pump:
BHDP-701J

MARS®

EXPLODED VIEW



REPLACEMENT PARTS

Location	Part Name	Quantity	Part No.
1	Front panel subassembly	1	12120100A16524
1.1	Front panel	1.0	12120100A00145
1.2	Filter guide	2.0	12120100000489
1.3	Air filter	1.0	12100204000324
2	Volute shell assembly	1	12120100005600
2.1	Volute shell subassembly	1.0	12120100005601
2.2	Single phase asynchronous motor	1.0	11002012034554
2.3	Centrifugal Fan	1.0	12100103000075
3	Capacitor cap	1	12600901000017
4	Pipe Temperature Sensor	1	11201007003439
5	Rear panel assembly	1	12120100005602
5.1	Rear panel subassembly	1.0	12120100005593
5.1.1	Drain Stopper	1.0	12600801000037
5.2	Display box subassembly	1.0	17220100000075
9	water tank assembly	1	12120100A17359
9.1	Water tank subassembly	1.0	12120100A16520
9.1.1	Water tank	1.0	12120100A00278
9.1.4	Handle of water tank	1.0	12120100005563
9.1.5	Water tank cover	1.0	12120100000942
9.2	Dobber	1.0	12820100000004
9.3	Dobber case	1.0	12120100000932
10	Chassis assembly	1	12120100005591
10.1	Chassis Subassembly	1.0	12120100005590
10.2	Universal wheel	4.0	12620100000015
10.3	Power cord subassembly	1.0	17401202004342
11	Middle partition board assembly	1	12120100005604
11.1	Partition board subassembly	1.0	12120100005603
11.2	Micro Switch	1.0	17400512000013
11.2	Micro Switch	1.0	17400512000009
11.3	Installation bracket	1.0	12120100000594
11.5	Rubber pipe	1.0	12620100000004
11.5.1	Rubber pipe	1.0	12620100000005
11.5.2	Water distributor	1.0	12120600001257
11.5.3	Installation bracket	1.0	12120100000592
11.11	Protecting cover	1.0	12120100001404
14	Capillary assembly	1	15120100002032
15	Condenser Assembly	1	15820100000335
16	Evaporator assembly	1	15820100000655
17	Fixed speed rotary compressor	1	11103010016873
18	Electronic control box subassembly	1	17220100001261
18.1	Electronic control box	1.0	12220100000013
18.2	Capacitor of fan motor	1.0	17400101000499
18.3	Dehumidifier main control board subassembly	1.0	17120100002609
18.4	Humidity sensor subassembly	1.0	17122000035048
18.5	Main control board holder	1.0	12120100001598
19	Electrical Control Box Cover Subassembly	1	12220100000070
20	Capacitor clip	1	12200203000012
21	Capacitor of compressor	1	174001030000060
25	Drain connection	1	12100510000015
25.1	Drain connection	1.0	12100510000020
25.2	Rubber pipe	1.0	121005090000055

Due to ongoing product improvements, specifications and dimensions are subject to change and correction without notice or incurring obligations. Determining the application and suitability for use of any product is the responsibility of the installer. Additionally, the installer is responsible for verifying dimensional data on the actual product prior to beginning any installation preparations.

Incentive and rebate programs have precise requirements as to product performance and certification. All products meet applicable regulations in effect on date of manufacture; however, certifications are not necessarily granted for the life of a product. Therefore, it is the responsibility of the applicant to determine whether a specific model qualifies for these incentive/rebate programs.

Comfort-Cire®

1900 Wellworth Ave., Jackson MI 49203 • Ph. 517-787-2100 • www.marsdelivers.com

