

This Owner's Manual is provided and hosted by [Appliance Factory Parts](#).



COMFORT-AIRE PTHP15F130ASC Owner's Manual

[Shop genuine replacement parts for COMFORT-AIRE
PTHP15F130ASC](#)



[Find Your COMFORT-AIRE HVAC Parts - Select From 1486 Models](#)

----- Manual continues below -----

Comfort-Aire®

Century®

MARS®
Delivering Confidence

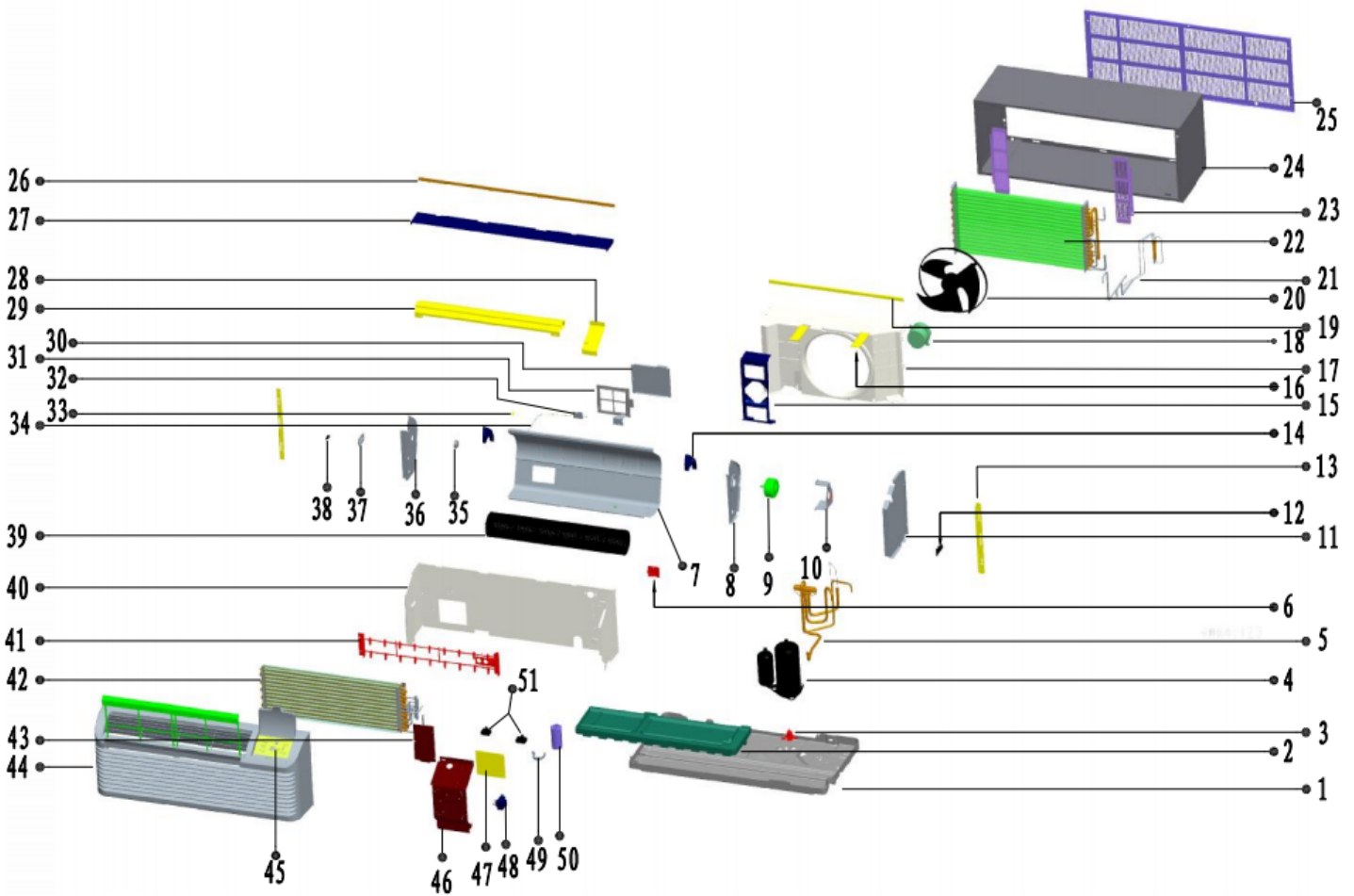
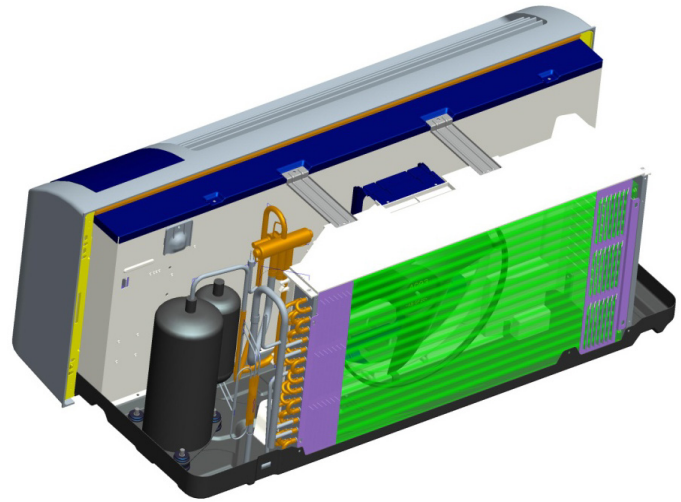
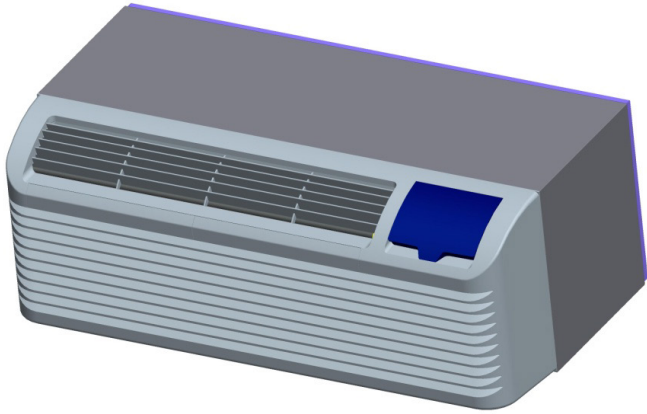
REPLACEMENT PARTS LIST

Packaged Terminal Air Conditioner & Heat Pump

PTHP15F130A/

PTHP15F150A

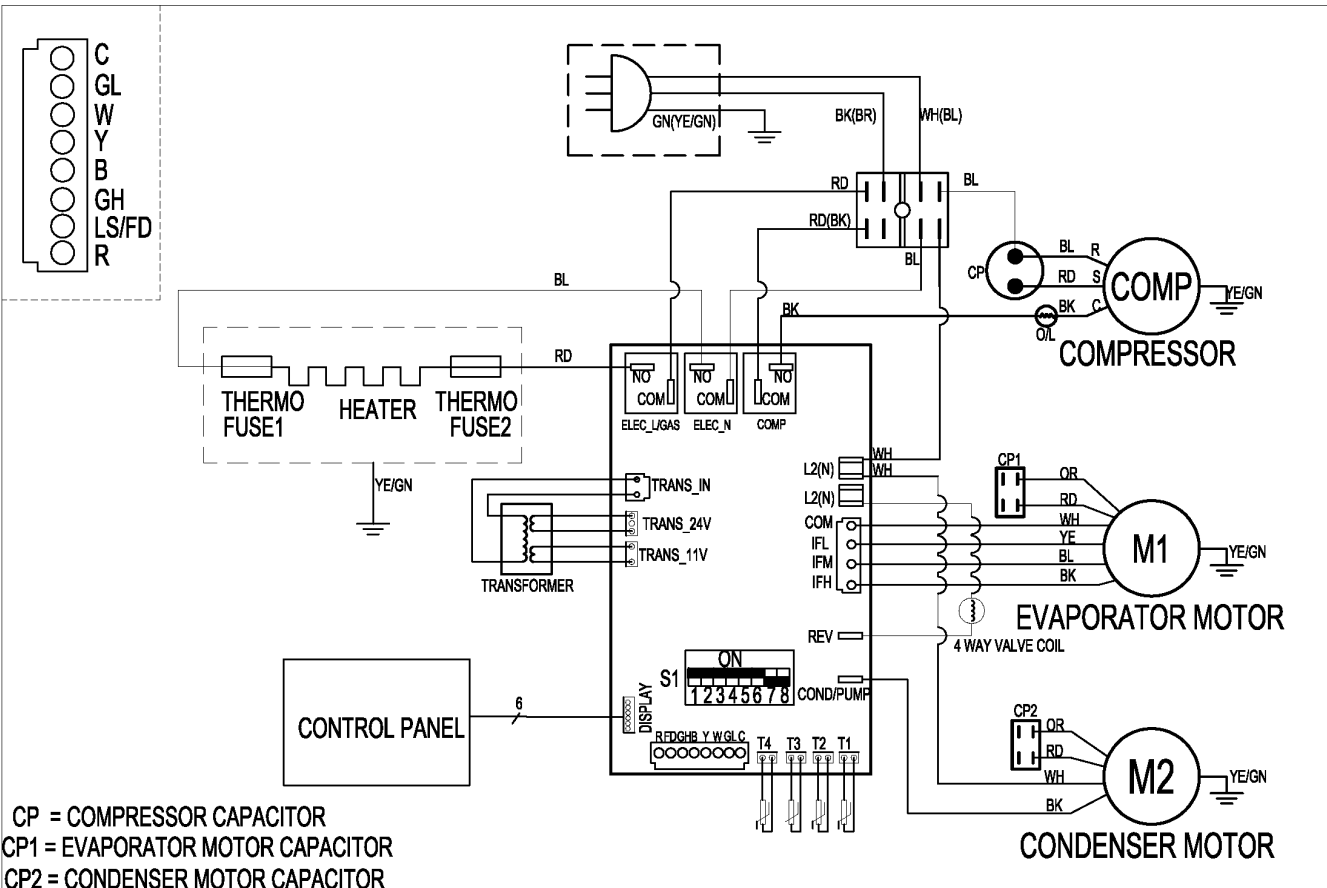
Exploded View



Wiring Diagram

CIRCUIT DIAGRAM

802020590464 V.4



CP = COMPRESSOR CAPACITOR
 CP1 = EVAPORATOR MOTOR CAPACITOR
 CP2 = CONDENSER MOTOR CAPACITOR

SELECTOR SWITCH (ON: <input type="checkbox"/> OFF: <input type="checkbox"/>)				WIRE COLOR CODE				
S1.1	Anti-cold air	<input type="checkbox"/> Enable <input type="checkbox"/> Disable	S1.5	Room Freeze Protection	<input type="checkbox"/> Enable <input type="checkbox"/> Disable	BL BLUE WH WHITE		
S1.2	Heat Pump	<input type="checkbox"/> Enable <input type="checkbox"/> Disable	S1.6	Electric Memory	<input type="checkbox"/> Enable <input type="checkbox"/> Disable	BR BROWN RD RED		
S1.3	Electric Heat	<input type="checkbox"/> Enable <input type="checkbox"/> Disable	S1.7	Fan CYC. For Cooling	<input type="checkbox"/> Enable <input type="checkbox"/> Disable	GN GREEN BK BLACK		
S1.4	Heat Pump Prior	<input type="checkbox"/> Only panel	S1.8	Set temp. step for two degree	<input type="checkbox"/>	OR ORANGE YE YELLOW		
	Electric Heat Prior	<input type="checkbox"/> Enable		Set temp. step for one degree	<input type="checkbox"/>			
						CIRCUIT DIAGRAM		
				DATE	DWG.NO.	NO.		
				2020-06-08	CPS-09ANR1-F+7.PM-4A	4		

Replacement Parts List

Location	Description	Qty.	Qty.
1	Tray assy	1	801220390278
2	Drain valve of PTAC	1	801600900095
3	Foam tray	1	802220890006
4	Compressor	1	801401600034
5	Four-way valve welding assy	1	801621190376
5.1	Four-way valve	1	801600100027
5.2	Four-way valve coil	1	802401600614
6	Line press plate	1	801120890051
7	Air duct	1	801220590678
8	Right side board assy of air duct	1	801220590681
9	Indoor single-axle motor	1	802400300054
10	Indoor motor support	1	801220890158
11	E-box left side board assy	1	801220890395
12	Groove clamp	1	801121190013
13	Left / right fixing clamp components	1	801220890167/801220890170
14	Left / right parts of air duct	1	801120890013/801120890014
15	Outdoor motor support	1	801220890144
16	Connecting plate of outdoor air guide ring	2	801220890166
17	Wind inlet guide	1	801120890019
18	Outdoor single-axle motor	1	802400400771
19	Grill	1	801220890190
20	Wall sleeve	1	801120890009
21	Back grid assy	1	801621190385
21.1	Back grid installation clamp	1	801600300054
22	Back grid	1	801521190098
23	Panel board support	2	801220890146
24	Top cover	1	801220890441
25	Seal board 2	1	801220690038
25.1	Air outlet	5	801120690007
25.2	Fresh air inlet cover	1	801220690019
26	Fresh air inlet filter	1	801220890165
27	Fresh air inlet support	1	801220890179
28	Fresh air inlet groove clamp	1	801220590692
29	Fresh air inlet spring and tube	1	801220590690
30	"Bearing block / Fixed plate of bearing seat"	1	801220890225
31	Left side board assy of air duct	1	801120890010
32	Fresh air inlet rail	2	801220890151
33	Fresh air inlet lever	1	801120890017
34	Cross-flow blower	1	802920890004/801120890028
35	Septum plate assy	1	802720890002/801220890156
36	Electric heater	1	801220590679
37	Evaporator assy	1	801120890012
38	Seal board 1	1	801120890011
39	Panel components	1	802920890005
40	Front panel	1	801220890506
41	Fixing panel clamp	1	802402000251
42	Filter net	1	801521190048
43	Filter net rail	1	801220890175
44	Air outlet grill	1	801120890020

Replacement Parts List (continued)

Location	Description	Part No.	Qty.
44.1	Panel cover	1	801120890021
44.2	Control board assy	2	801220890192
44.3	Electrical box	2	801120890022
44.4	control mask	1	801120890023
44.5	Control board	1	801120890024
44.6	Electrical box flip	1	801120890025
45	PCB	1	803320590193
45.1	Transformer	1	801120890026
45.2	Capacitor clamp	1	802020590467
45.3	Compressor capacitor	1	803300400018
46	"Indoor motor capacitor/Outdoor motor capacitor"	1	801220590684
47	Air outlet protection grid	1	803300301100
48	Indoor temp. sensor	1	802300200089
49	Outdoor temp. sensor	1	801200100002
50	Air return temp. sensor	1	802401000040
51	LCDI power cord	1	802419900166/802401100066
52	Compressor connecting wire	1	802920590006
53	Refridgerant	1	802300400088
54	Air return temp. sensor	1	802300400077
55	LCDI power cord	1	802300400129
56	Compressor connecting wire	1	802420690014
57	Refrigerant	1	802420390053
58	Refrigerant	0.97KG	800500100004

Due to ongoing product improvements, specifications and dimensions are subject to change and correction without notice or incurring obligations. Determining the application and suitability for use of any product is the responsibility of the installer. Additionally, the installer is responsible for verifying dimensional data on the actual product prior to beginning any installation preparations.

Incentive and rebate programs have precise requirements as to product performance and certification. All products meet applicable regulations in effect on date of manufacture; however, certifications are not necessarily granted for the life of a product. Therefore, it is the responsibility of the applicant to determine whether a specific model qualifies for these incentive/rebate programs.

Comfort-Cire® **Century**®

1900 Wellworth Ave., Jackson, MI 49203 • Ph. 517-787-2100 • www.marsdelivers.com

