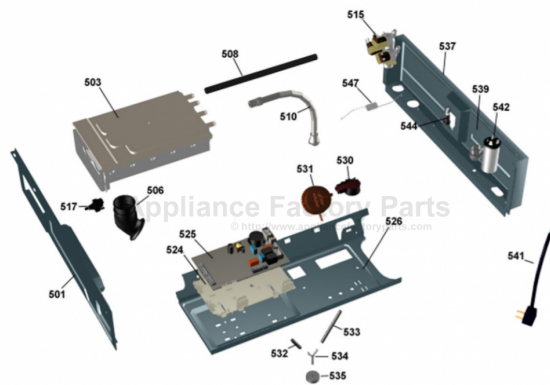


This Owner's Manual is provided and hosted by [Appliance Factory Parts](#).



# ASKO W6761WH Owner's Manual

[Shop genuine replacement parts for ASKO W6761WH](#)



[Find Your ASKO Washer Parts - Select From 53 Models](#)

----- Manual continues below -----



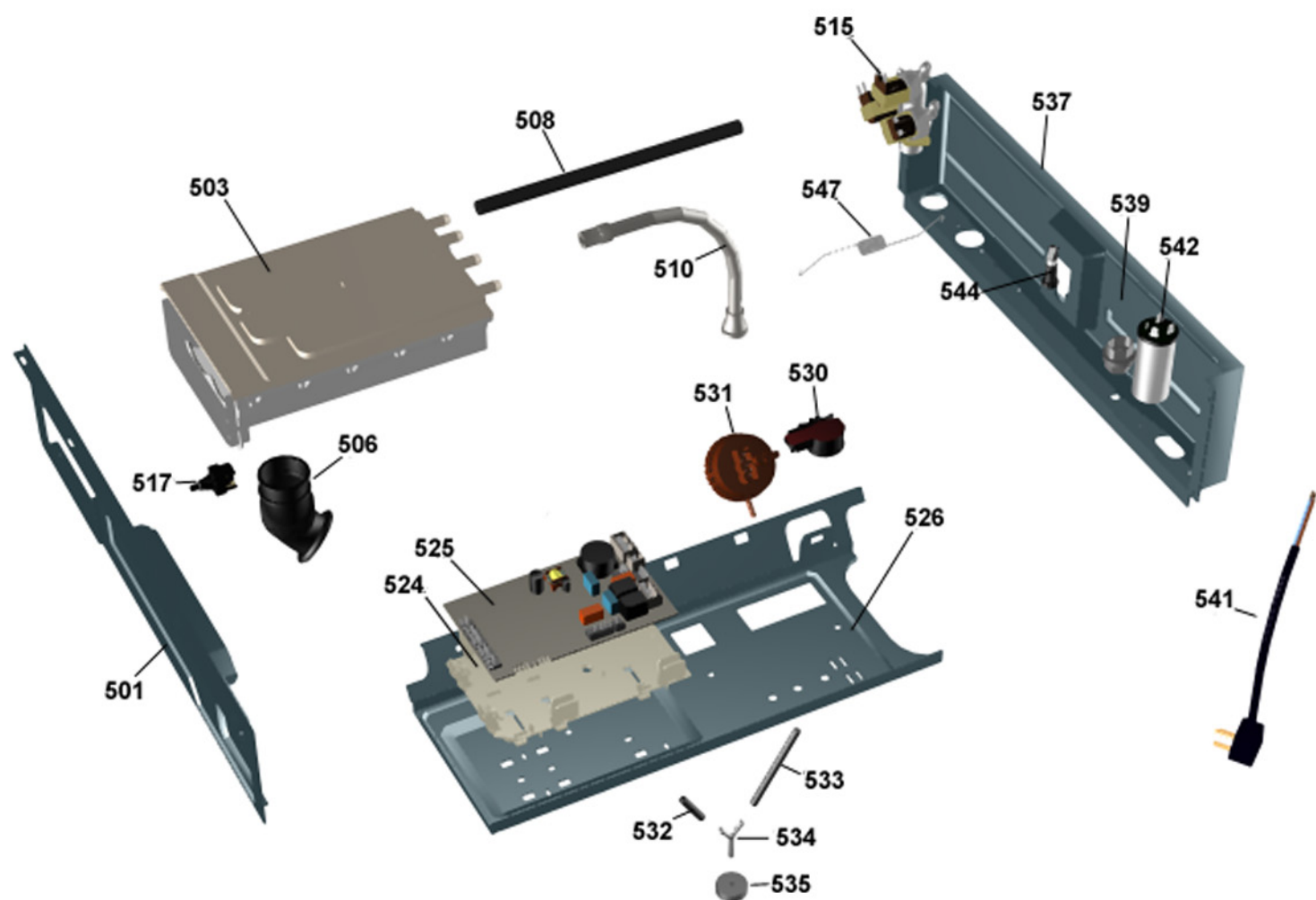
## Spare Parts Catalogue

Washing machines \ 6000 Series  
Type: WM55US  
Model: W6761 US White

Prod. No: 107676110  
October 5th 2004

**AM Appliances Group**

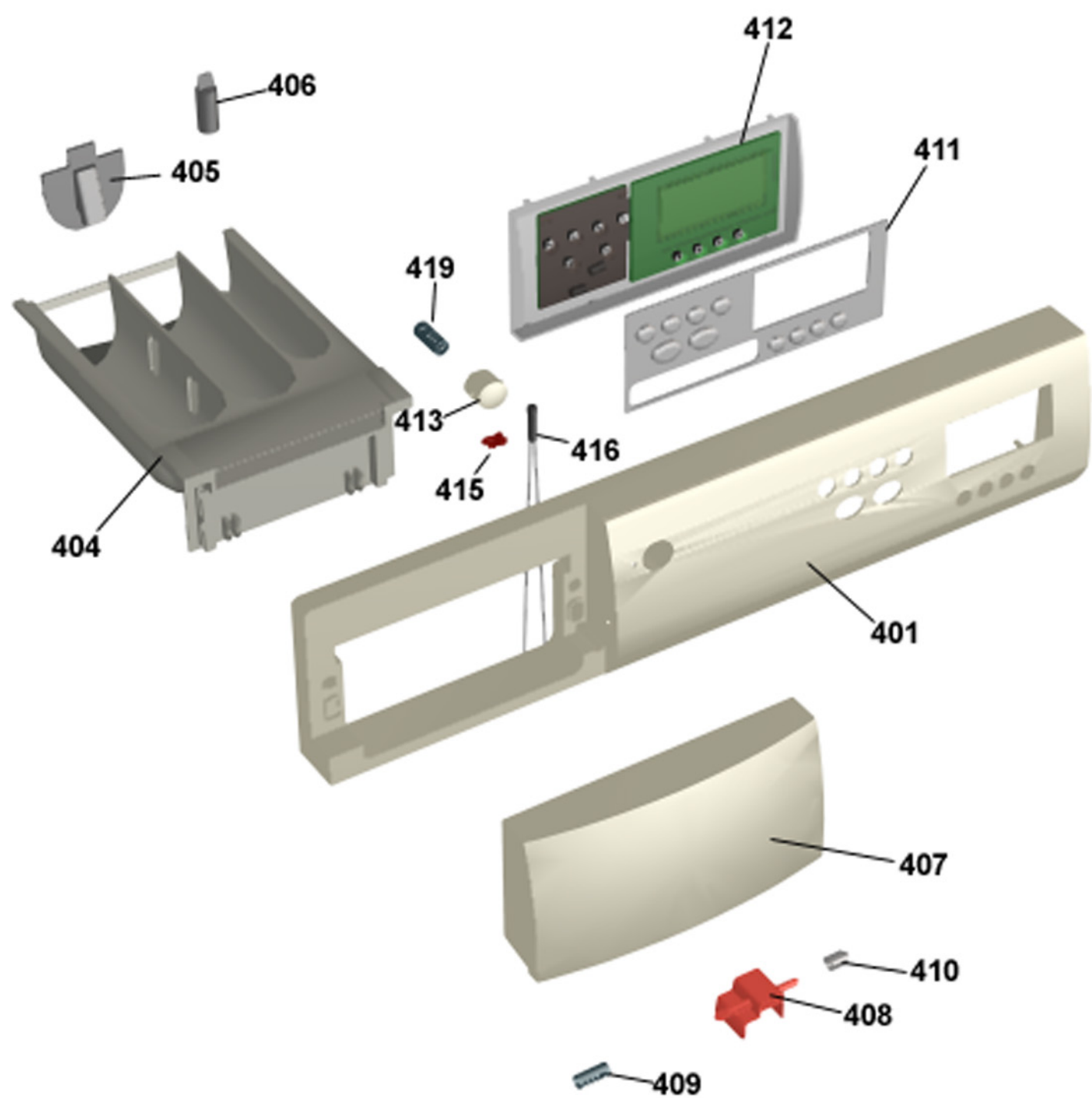
P.O. Box 851805 • Richardson • TX 75085-1805  
789 N. Grove Road • Suite 103 • Richardson • TX 75081



## Upper session

### ASKO, W6761 US - White (WM55US)

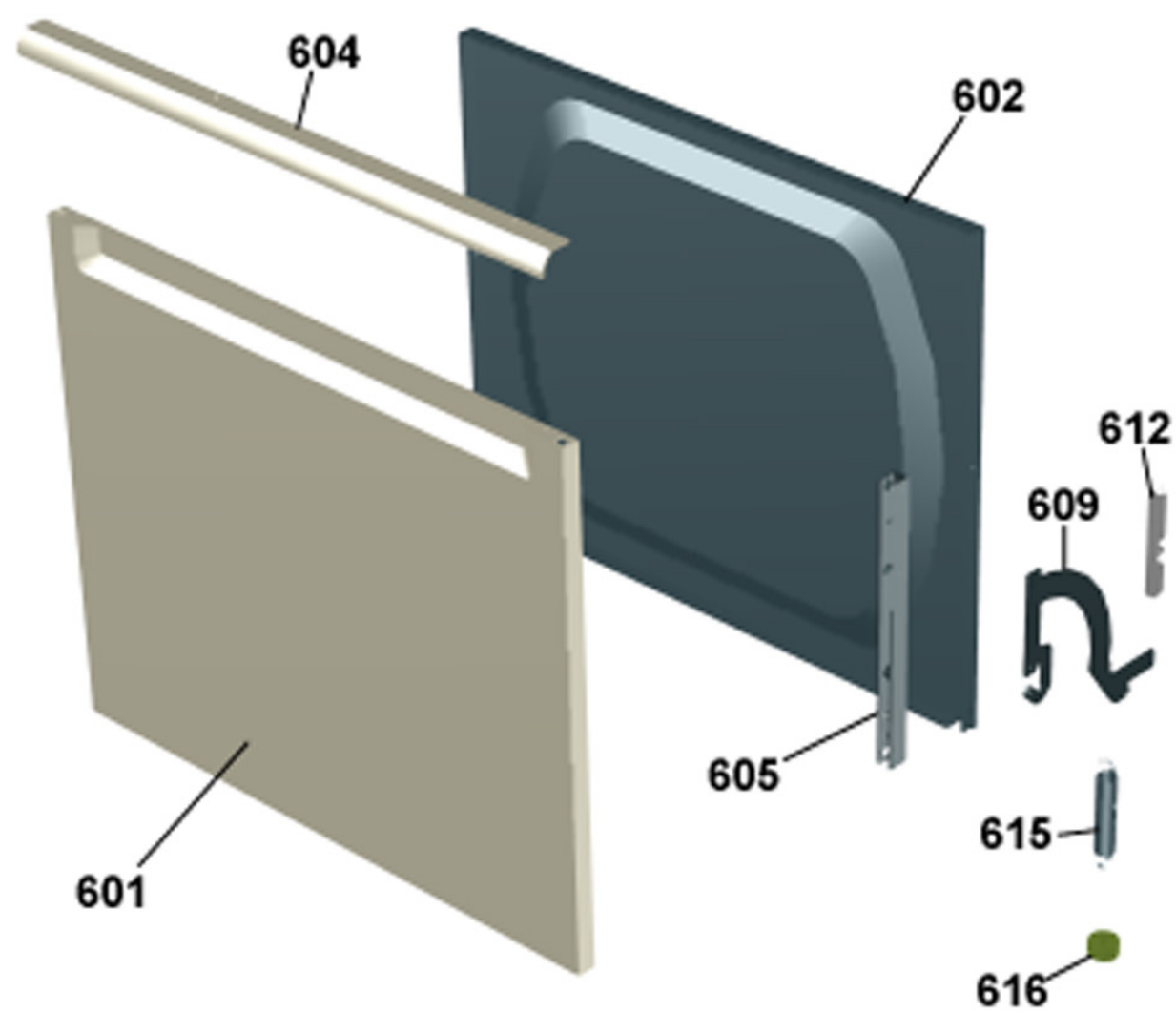
| Pos   | Spare part No. | Description                    | Qty   | Comment              |
|-------|----------------|--------------------------------|-------|----------------------|
| 501   | 8061690        | BEAM FRONT WMD20               | 1 Pcs |                      |
| 501-a | 8900338        | SCREW RTK ST 42X95 FZB T20     | 2 Pcs |                      |
| 501-b | 8901413        | LOCK WASHER AZ 43 GALV         | 2 Pcs |                      |
| 501-c | 8902087        | SCREW PTK 40X14 WN1452 FZB T20 | 2 Pcs |                      |
| 503   | 8061661        | CONTAINER DETERGENT COMP       | 1 Pcs |                      |
| 503-a | 8901970        | SCREW PTK 40X12 A2 WN1452 T20  | 2 Pcs |                      |
| 503-b | 8902072        | SCREW PT KB40X10 WN1442 GALV   | 1 Pcs |                      |
| 503-c | 8056656        | CABLE STRIP                    | 3 Pcs |                      |
| 506   | 8061628        | BELLOWS HOSE INLET WM20        | 1 Pcs |                      |
| 506   | 8064692        | BELLOW HOSE INLET LONG UL4     | 1 Pcs |                      |
| 506-a | 8063607        | HOSE CLIP 575-708              | 1 Pcs |                      |
| 508   | 8061702        | RUBBER HOSE 10x15x300          | 3 Pcs |                      |
| 510   | 8061736        | VENTILATION HOSE WM20 UL4      | 1 Pcs |                      |
| 510-a | 8052730        | HOSE CLIP OETIKER 210-706R     | 1 Pcs |                      |
| 515   | 8061757        | INLET VALVE 3-WAY WM20         | 1 Pcs |                      |
| 515-a | 8901097        | SCREW MRT-TT 4X12 FZB T20      | 2 Pcs |                      |
| 517   | 8065838        | PUSHBUTTONSW. COMPL. ELECTR.   | 1 Pcs | NB! Not a spare part |
| 517   | 8061875        | PUSHBUTTONSW 2-POLE CLOS       | 1 Pcs |                      |
| 524   | 8061921        | HOLDER PROGCONTROLLER WMD20    | 1 Pcs |                      |
| 525   | 8064257        | CONTROL UNIT Replby 8076640    | 1 Pcs |                      |
| 526   | 8061692        | BRACKET FOR ELECCOMP WM20      | 1 Pcs |                      |
| 526-a | 8900338        | SCREW RTK ST 42X95 FZB T20     | 2 Pcs |                      |
| 526-b | 8900327        | SCREW RTS ST 42X13 FZB T20     | 1 Pcs |                      |
| 529   | 8086419        | CABLE SET E110 WM66/55         | 1 Pcs |                      |
| 529   | 8086447        | Add Harness WM66/55            | 1 Pcs |                      |
| 530   | 8061664        | PRESSURE SENSOR TYPE 1166 UL4  | 1 Pcs |                      |
| 531   | 8064275        | LEVEL SWITCH WM21 UL4          | 1 Pcs |                      |
| 532   | 8003641        | RUBBER HOSE 5X8X45             | 1 Pcs |                      |
| 533   | 7382985        | RUBBER HOSE 5X8X100            | 1 Pcs |                      |
| 534   | 8051843        | Y-PIPE 05                      | 1 Pcs |                      |
| 535   | 8061997        | GUARD LEVELSWITCH HOSE WM20    | 2 Pcs |                      |
| 536   | 8061975        | CABLE HOLDER BIG               | 1 Pcs |                      |
| 537   | 8061694        | CROSS BEAM                     | 1 Pcs |                      |
| 537-a | 8900327        | SCREW RTS ST 42X13 FZB T20     | 4 Pcs |                      |
| 539   | 8006948        | GROMMET Z13                    | 1 Pcs |                      |
| 541   | 8064210        | CORDSET W FLAT PIN SLEEVES US  | 1 Pcs |                      |
| 542   | 8058558        | RADIOINTERFSUPP FILTER         | 1 Pcs |                      |
| 542-a | 8901168        | NUT Replby 8901155             | 1 Pcs |                      |
| 542-b | 8901419        | LOCK WASHER AZ 84 GALV         | 1 Pcs |                      |
| 544   | 8065573        | FUSE HOLDER GREY 15A US/CA     | 2 Pcs |                      |
| 544-a | 8058140        | FUSE 15AT 63X32                | 2 Pcs |                      |
| 544-b | 8055725        | FUSE HOLDER INSERT STI         | 2 Pcs |                      |
| 544-c | 8054613        | FUSE HOLDER HTB38              | 2 Pcs |                      |
| 547   | 8061923        | BALANCING SPRING WM20          | 2 Pcs |                      |



## Control panel

### ASKO, W6761 US - White (WM55US)

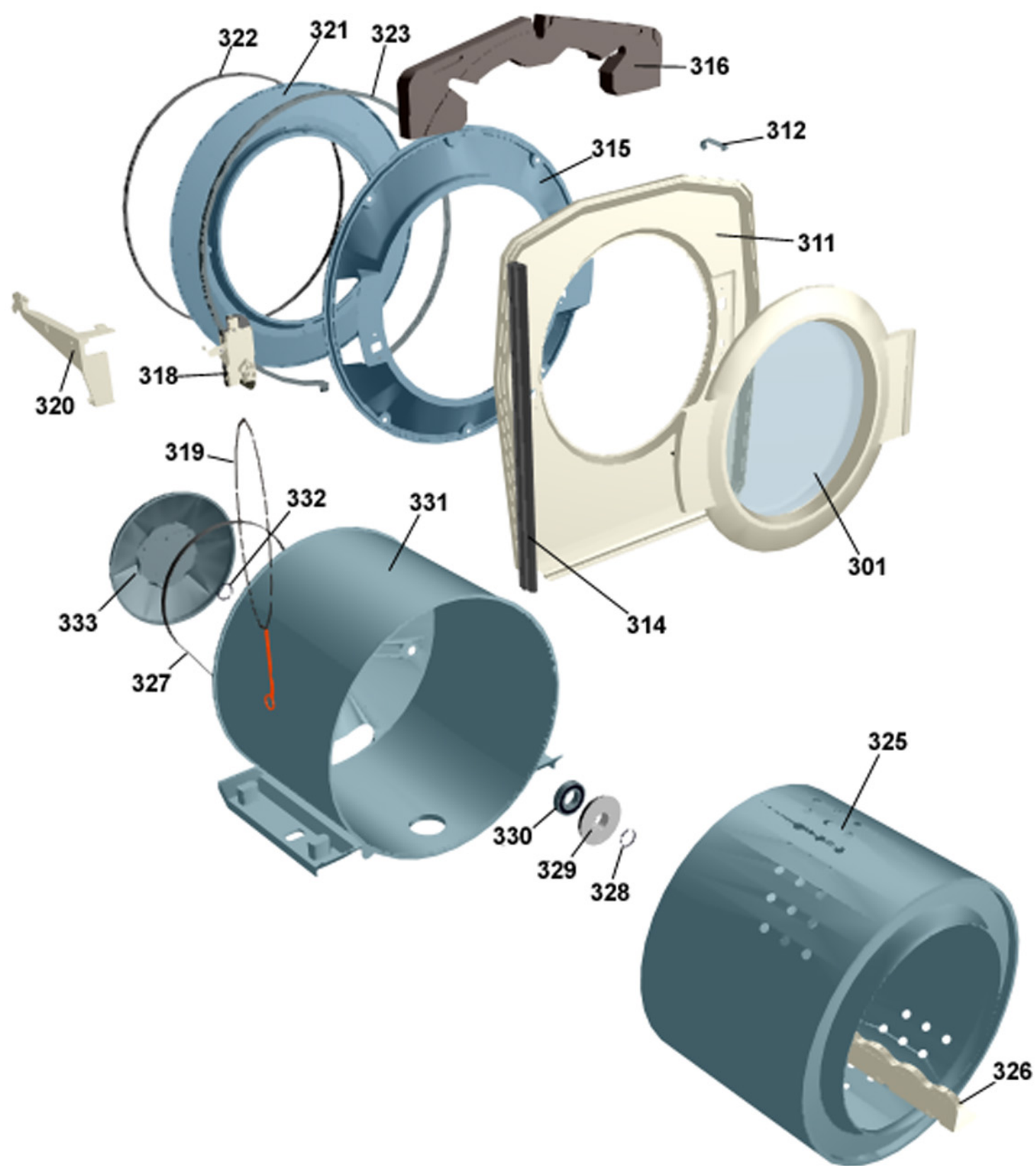
| Pos   | Spare part No. | Description                    | Qty   | Comment |
|-------|----------------|--------------------------------|-------|---------|
| 401   | 8065668-0-UL   | PANEL Replby 8076289-0-UL      | 1 Pcs |         |
| 401-a | 8901591        | BINDING CLIP SCO 5740          | 4 Pcs |         |
| 403   | 8063387-49     | PLATE PROGINFO SYMBOL/E-S SE   | 1 Pcs |         |
| 404   | 8061630        | DETERGENT COMP WM20            | 1 Pcs |         |
| 405   | 8061633        | DIVIDER DETERGENT COMP         | 1 Pcs |         |
| 406   | 8061634        | SIPHON WM20                    | 1 Pcs |         |
| 407   | 8061846-0-UL   | HANDLE PANEL MECH WMD20        | 0 Pcs |         |
| 408   | 8061621-34     | SAFETY CATCH HANDLE RED        | 1 Pcs |         |
| 409   | 8061622        | SPRING SAFETY CATCH HANDLE     | 1 Pcs |         |
| 410   | 8064010        | SPACING SLEEVE SAFETY CATCH    | 1 Pcs |         |
| 411   | 8064271-0      | PUSHBUTTONS W PRINT WM55/66    | 1 Pcs |         |
| 412   | 8065328        | DISPLAY UNIT WMD21 UL4 *ESD*   | 1 Pcs |         |
| 413   | 8061902-0      | PUSHBUTTON MAINSWITCH WMD20    | 1 Pcs |         |
| 415   | 8061822        | DECOR LENS                     | 1 Pcs |         |
| 416   | 8064068        | INDICATION LAMP WM55/66 UL     | 1 Pcs |         |
| 419   | 8061857        | SPRING MAIN SWITCH WMD20       | 1 Pcs |         |
| 490   | 8065659        | INSTRUCT WM21 ENGLISH US/CA    | 1 Pcs |         |
| 490   | 8065660        | INSTRUCTIONS WM21 FRENCH US/CA | 1 Pcs |         |
| 490   | 8065661        | INSTRUCT WM21 SPANISH US/CA    | 1 Pcs |         |



## Outer door

### ASKO, W6761 US - White (WM55US)

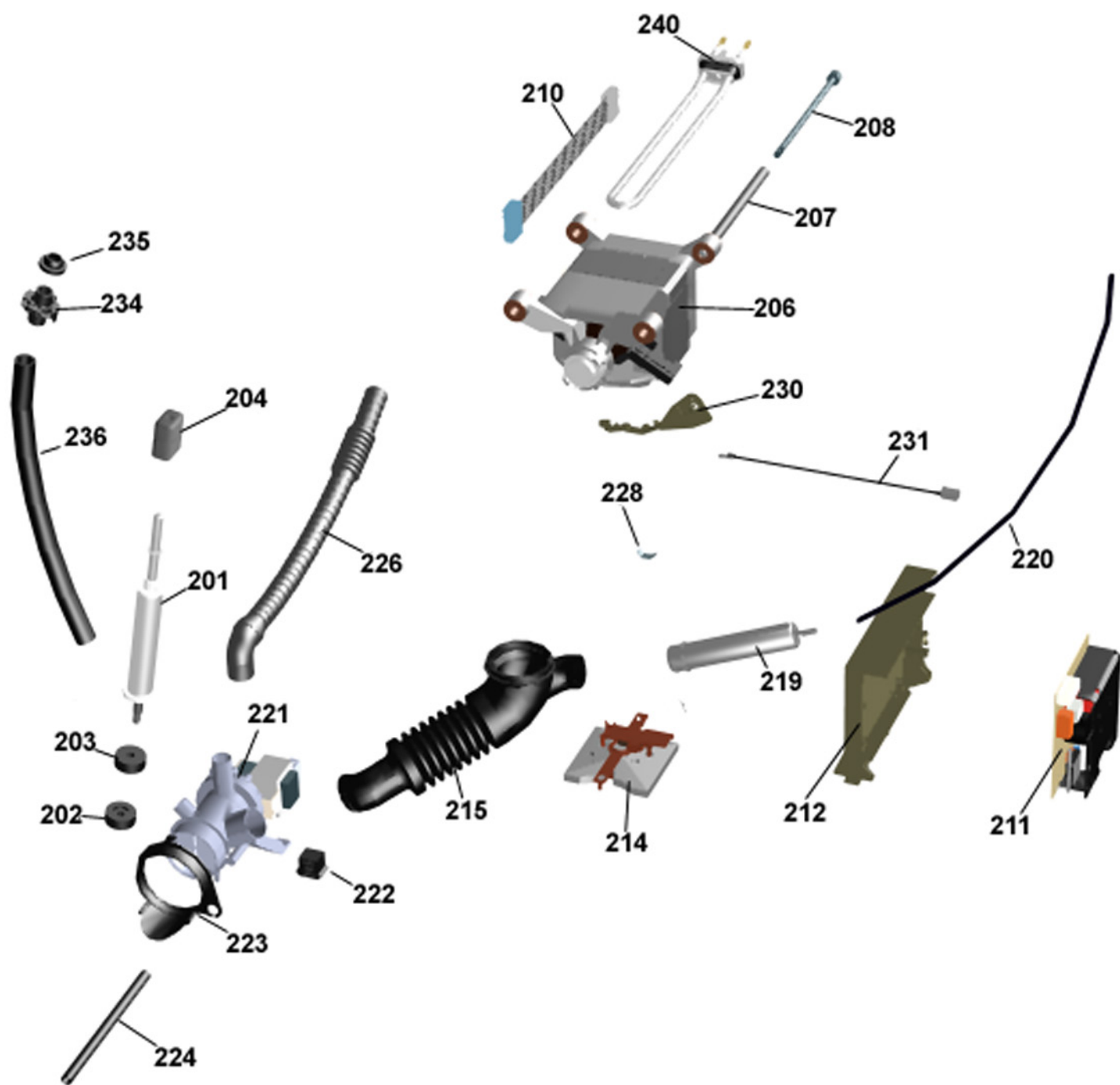
| Pos   | Spare part No. | Description                    | Qty   | Comment |
|-------|----------------|--------------------------------|-------|---------|
| 601   | 8061733-0      | DOOR OUTER PART WHITE WMD20    | 1 Pcs |         |
| 602   | 8061734        | DOOR INNER PART CROMED WM20    | 1 Pcs |         |
| 604   | 8061656-0      | HANDLE FRONT DOOR WH WM20      | 1 Pcs |         |
| 606   | 8061764        | REINFORCEMENT HINGE WM20       | 1 Pcs |         |
| 606-a | 8901969        | SCREW MRT-TT 5x12 FZB T20      | 4 Pcs |         |
| 606-b | 8901097        | SCREW MRT-TT 4X12 FZB T20      | 4 Pcs |         |
| 609   | 8061906        | HINGE ELECTRIC GALVANIZ WM20   | 2 Pcs |         |
| 609-a | 8901192        | NUT LOCKING 6 BH8 GALV         | 2 Pcs |         |
| 609-b | 8901004        | SCREW BUFO 88 6X16 GALV        | 2 Pcs |         |
| 609-c | 7382628        | WASHER NYLON 62X14X1           | 2 Pcs |         |
| 612   | 8061777-0      | GUIDE HINGE WHITE WM20         | 2 Pcs |         |
| 615   | 8061742        | EXTENSION SPRING HINGE WM20    | 1 Pcs |         |
| 616   | 8061909        | GLIDESLEEVE TENSIONSPRING WM20 | 1 Pcs |         |



## Cylinder and related parts

### ASKO, W6761 US - White (WM55US)

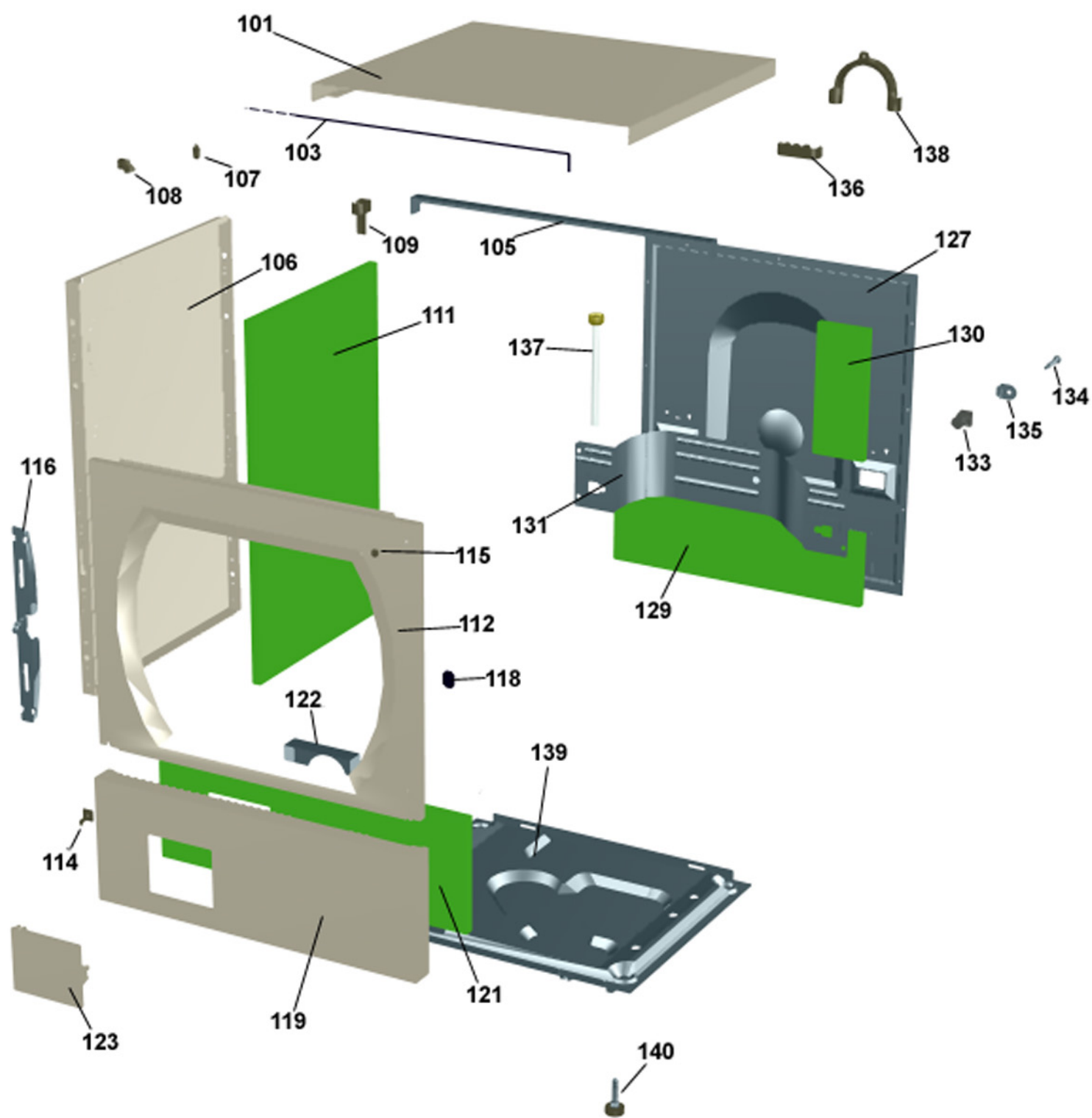
| Pos   | Spare part No. | Description                    | Qty   | Comment |
|-------|----------------|--------------------------------|-------|---------|
| 301   | 8064906-42     | FRONT DOOR CPLVELOUR/GREY UL4  | 1 Pcs |         |
| 302   | 8061651-96     | FRAME FRONT DOOR OUTER VELOUR  | 1 Pcs |         |
| 303   | 8061652-42     | FRAME FRONT DOOR INNER WM20    | 1 Pcs |         |
| 304   | 8061685        | FRONT GLASS D306x42mm WM20     | 1 Pcs |         |
| 305   | 8061798        | LOCK HOOK WM20                 | 1 Pcs |         |
| 306   | 8064025        | SEALING FRONT DOOR             | 1 Pcs |         |
| 307   | 8061624        | SECURING PLATE FRONTGLAS       | 4 Pcs |         |
| 308   | 8061686-42     | HINGE FRONT DOOR GREY WM20     | 1 Pcs |         |
| 308-a | 8901969        | SCREW MRT-TT 5x12 FZB T20      | 2 Pcs |         |
| 309   | 8061687        | SHAFT FOR HINGE WM20           | 1 Pcs |         |
| 311   | 8061671-0      | COVER PLATE OUTER WHITE        | 1 Pcs |         |
| 312   | 8061879        | TENSIONSPRING COVERPLATE OUTER | 4 Pcs |         |
| 314   | 8061616        | GAPSEALING SIDE WM20           | 2 Pcs |         |
| 315   | 8061670        | COVER PLATE INNER              | 1 Pcs |         |
| 316   | 8061678        | DAMPER WEIGHT                  | 2 Pcs |         |
| 316-a | 8901135        | SCREW M6SF-TT 8X25 FZB         | 3 Pcs |         |
| 318   | 8061679        | DOOR LOCK WM20 UL4             | 1 Pcs |         |
| 318-a | 8902087        | SCREW PTK 40X14 WN1452 FZB T20 | 2 Pcs |         |
| 319   | 8061780        | EMERGENCY OPENING COMPL WM20   | 1 Pcs |         |
| 320   | 8061680-UL     | CONTACT GUARD DOOR LOCK UL4    | 1 Pcs |         |
| 321   | 8065043        | FRONT PANEL TUB/2 WM20         | 1 Pcs |         |
| 322   | 8061889        | SEALING STRIP FRONT PANEL(TUB) | 1 Pcs |         |
| 323   | 8061669        | TENSION RING WM20              | 1 Pcs |         |
| 325   | 8061600        | CYLINDER COMPL WM20            | 1 Pcs |         |
| 326   | 8061604        | DRUM PADDLE WM20               | 3 Pcs |         |
| 327   | 8061682        | DRIVE BELT 5EPJ 1209           | 1 Pcs |         |
| 328   | 8058497        | O-RING 262X3 NBR70             | 1 Pcs |         |
| 329   | 8801211        | V-RING CASSETTE COMPL WO-RING  | 1 Pcs |         |
| 330   | 8056314        | BALL BEARING 6206 2RS MTSRL    | 2 Pcs |         |
| 331   | 8801165        | CONTAINER CPLW BEARING HOUSE   | 1 Pcs |         |
| 332   | 8056810        | SCALE WASHER 37x305x05         | 1 Pcs |         |
| 333   | 8056376        | PULLEY COMPL D292              | 1 Pcs |         |
| 334   | 8057209        | WASHER 42X10X4                 | 1 Pcs |         |
| 335   | 8901052        | SCREW BUFO 88 10X25 GALV       | 1 Pcs |         |



## Lower session

### ASKO, W6761 US - White (WM55US)

| Pos   | Spare part No. | Description                    | Qty   | Comment |
|-------|----------------|--------------------------------|-------|---------|
| 201   | 8801171        | SPRING LEG KIT WM20            | 1 Pcs |         |
| 202   | 8055796        | RUBBER BUFFER SPRING LEG       | 4 Pcs |         |
| 203   | 8055797        | RUBBER BUFFER SPRING LEG       | 4 Pcs |         |
| 204   | 8061668        | RUBBER DAMPER SPRINGLEG        | 4 Pcs |         |
| 206   | 8063734        | MOTOR FHP 50/60HZ WM55/66 UL4  | 1 Pcs |         |
| 206-a | 8901155        | NUT M6M8 BH8 GALV              | 2 Pcs |         |
| 206-b | 8901337        | WASHER BRB 84X16 HB 200 GALV   | 1 Pcs |         |
| 207   | 8058261        | SPACTUBE MOTOR SUSP 12X191     | 2 Pcs |         |
| 208   | 8063591        | SCREW 88 M8x205 FZB            | 2 Pcs |         |
| 210   | 8086404        | CABLE SET ST2-MO WM66/55       | 1 Pcs |         |
| 211   | 8061399        | CONTROL UNIT MOTOR CHOPPERUL4  | 1 Pcs |         |
| 212   | 8061918        | HOLDER MOTOR CONTROLLER WM20   | 1 Pcs |         |
| 212-a | 8901097        | SCREW MRT-TT 4X12 FZB T20      | 1 Pcs |         |
| 212-b | 8901322        | WASHER SRB 43X12X1 GALV        | 1 Pcs |         |
| 214   | 8061620        | OVERFLOW PROTECTION UL4 WM20   | 1 Pcs |         |
| 215   | 8061681        | BELLOWS HOSE OUTLET PUMP UL4   | 1 Pcs |         |
| 215-a | 8063262        | HOSE CLIP 800-708              | 1 Pcs |         |
| 215-b | 8056471        | HOSE CLIP                      | 1 Pcs |         |
| 215-c | 8052083        | HOSE CLIP RFZ 396-706R         | 1 Pcs |         |
| 219   | 8061924        | PRESSURE CHAMBER WM20 UL4      | 1 Pcs |         |
| 219-c | 8052083        | HOSE CLIP RFZ 396-706R         | 1 Pcs |         |
| 220   | 7382670        | RUBBER HOSE 5X8X550            | 1 Pcs |         |
| 221   | 8801167        | DRAIN PUMP SYNCHANCOMPL60HZ    | 1 Pcs |         |
| 222   | 8061649        | RUBBER BUFFERDRAIN PUMP WM20   | 2 Pcs |         |
| 223   | 8061796        | RUBBER RING DRAINPUMP WM20     | 1 Pcs |         |
| 224   | 8061725        | DRAIN HOSE 180mm WM20          | 1 Pcs |         |
| 224-a | 8052731        | HOSE CLIP OETIKER 148-706R     | 1 Pcs |         |
| 226   | 8061998        | OUTLET HOSE WM20 UL4           | 1 Pcs |         |
| 226-a | 8056491        | HOSE CLIP 301-708              | 1 Pcs |         |
| 228   | 33700183       | TERMINAL ESPA                  | 1 Pcs |         |
| 228-a | 8901097        | SCREW MRT-TT 4X12 FZB T20      | 1 Pcs |         |
| 228-b | 8901413        | LOCK WASHER AZ 43 GALV         | 1 Pcs |         |
| 230   | 8061738        | HUBBER THERMISTOR WM20         | 1 Pcs |         |
| 231   | 8061663        | THERMISTOR (E30) UL4           | 1 Pcs |         |
| 232   | 8061976        | CABLE HOLDER SMALL             | 2 Pcs |         |
| 234   | 8061674        | RECIRKULATION STUB             | 1 Pcs |         |
| 235   | 8061673        | GROMMET RECIRK STUB            | 1 Pcs |         |
| 236   | 8063721        | HOSE RECIRKULATION WM20        | 1 Pcs |         |
| 236-a | 8054196        | HOSE CLIP FZB 228-256          | 2 Pcs |         |
| 240   | 8061706        | HEATING ELEMENT 2000W 230V UL4 | 1 Pcs |         |



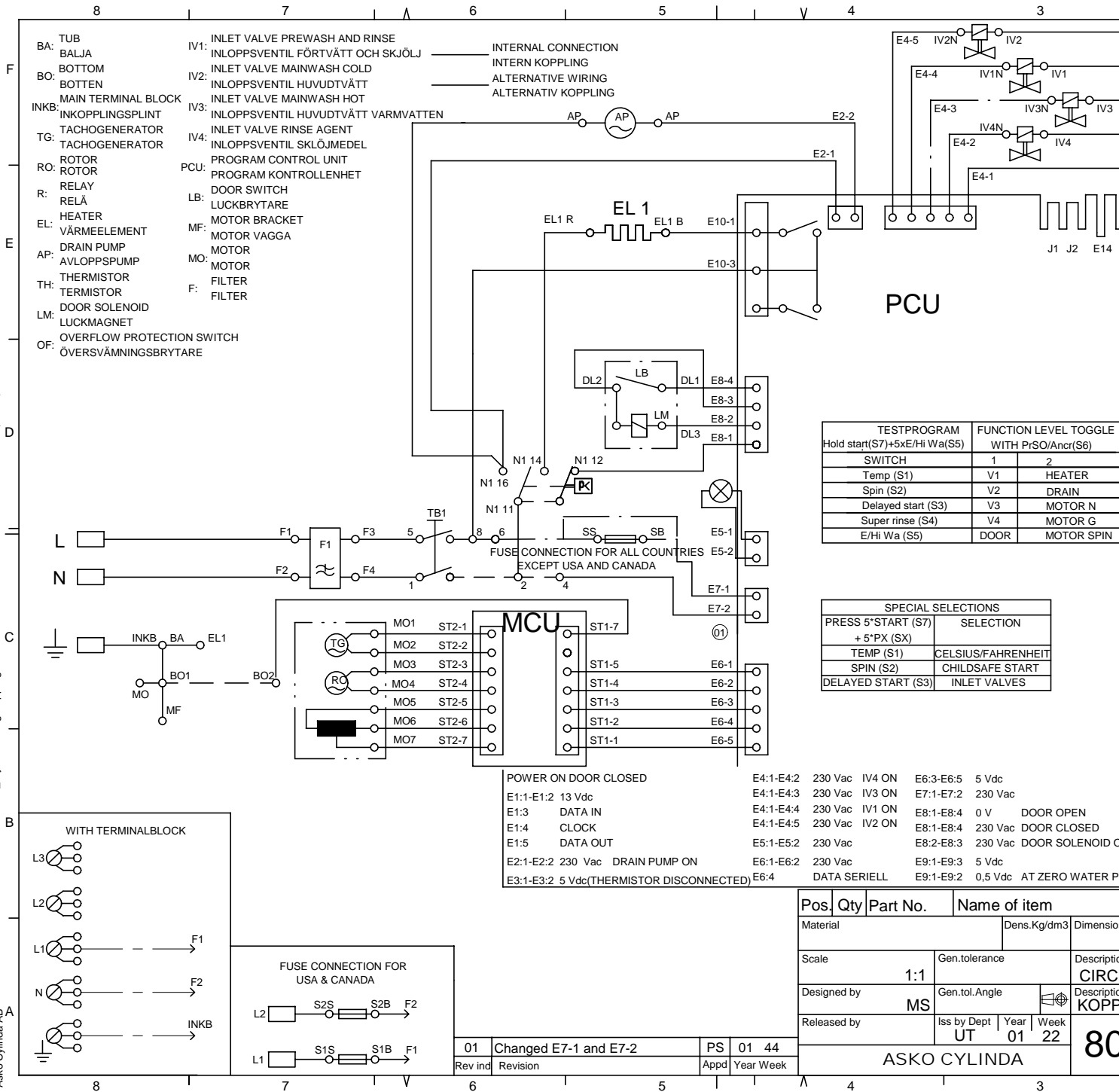
## Outer casing

### ASKO, W6761 US - White (WM55US)

| Pos   | Spare part No. | Description                   | Qty    | Comment |
|-------|----------------|-------------------------------|--------|---------|
| 101   | 8061817-0      | TOP COVER WHITE               | 1 Pcs  |         |
| 101-a | 8900338        | SCREW RTK ST 42X95 FZB T20    | 3 Pcs  |         |
| 101-b | 8901413        | LOCK WASHER AZ 43 GALV        | 2 Pcs  |         |
| 103   | 8064062        | STRIP TOP COVER WMD20 UL4     | 1 Pcs  |         |
| 105   | 8064198        | SUPPORT BEAM TOP COVER        | 1 Pcs  |         |
| 106   | 8801174-0      | SIDE PLATE COMPL WM20         | 1 Pcs  |         |
| 107   | 8061763        | GUIDE FRONT PLATE/TOP COVER   | 2 Pcs  |         |
| 108   | 8061916        | CABLE HOLDER WMD20 UL4        | 3 Pcs  |         |
| 109   | 8061713        | HOLDER HOSE SIDE PLATE UL4    | 2 Pcs  |         |
| 111   | 8061986        | SOUND DEADSHEET SIDE PANEL    | 2 Pcs  |         |
| 112   | 8061732-0      | FRONT PLATE WHITE WM20        | 1 Pcs  |         |
| 112-a | 8900327        | SCREW RTS ST 42X13 FZB T20    | 4 Pcs  |         |
| 112-b | 8901413        | LOCK WASHER AZ 43 GALV        | 2 Pcs  |         |
| 114   | 8064177        | HOOK LOWER PANEL UL4          | 2 Pcs  |         |
| 114-a | 8900338        | SCREW RTK ST 42X95 FZB T20    | 2 Pcs  |         |
| 115   | 8061741        | RUBBER BUFFER FRONT DOOR WM20 | 2 Pcs  |         |
| 116   | 8061744        | HINGE BEARING                 | 2 Pcs  |         |
| 116-a | 8901097        | SCREW MRT-TT 4X12 FZB T20     | 6 Pcs  |         |
| 118   | 8061745        | RUBBER BUFFER HINGE WM20      | 2 Pcs  |         |
| 119   | 8064294-0      | LOWER COVER COMPL WHITE WM20  | 1 Pcs  |         |
| 119-a | 8900327        | SCREW RTS ST 42X13 FZB T20    | 2 Pcs  |         |
| 119-b | 8901413        | LOCK WASHER AZ 43 GALV        | 2 Pcs  |         |
| 121   | 8061989        | SOUND DEADSHEET LOWER COVER   | 1 Pcs  |         |
| 122   | 8061785        | PUMP GUARD WM20               | 1 Pcs  |         |
| 123   | 8061657-0      | DOOR OUTLET PUMP WM20 UL4     | 1 Pcs  |         |
| 127   | 8061737        | REAR PANEL WM20               | 1 Pcs  |         |
| 127-a | 8061959        | PLUG HUMIDITY SENSOR/REAR PAN | 1 Pcs  |         |
| 127-b | 8900338        | SCREW RTK ST 42X95 FZB T20    | 11 Pcs |         |
| 129   | 8061985        | SOUND DEADSHEET REAR PANEL LO | 1 Pcs  |         |
| 130   | 8061984        | SOUND DEADReplBy 8061986      | 2 Pcs  |         |
| 131   | 8061693        | TRANSPORT BEAM                | 1 Pcs  |         |
| 131-a | 8900338        | SCREW RTK ST 42X95 FZB T20    | 4 Pcs  |         |
| 131-b | 8901413        | LOCK WASHER AZ 43 GALV        | 1 Pcs  |         |
| 133   | 8064206-UL     | TRANSPORT SLEEVE COMPL WHUL4  | 3 Pcs  |         |
| 134   | 8901037        | SCREW BUFO 88 8X70 GALV       | 3 Pcs  |         |
| 135   | 8061767        | LOCKINGWASHER CROSSBAR WM20   | 3 Pcs  |         |
| 136   | 8061799        | HOLDER HOSEReplby 8065773     | 2 Pcs  |         |
| 137   | 8056950        | CONNECPIPE W-1500-15-3/4-3/4  | 1 Pcs  |         |
| 138   | 8050805        | HOLDER HOSE UL4               | 1 Pcs  |         |
| 138-a | 8002263        | CABLE STRIP 200 MM            | 1 Pcs  |         |
| 139   | 8061618        | BOTTOM WMD20                  | 1 Pcs  |         |
| 140   | 8059334        | RUBBER FOOT D35xM10 INC NUT   | 4 Pcs  |         |

KOMPLETTSCHEMA WM50: 80 643 93

S:\UW\mzd2011\_Tryckunderlag\Kopplingschema\8064394\_KWM50\01.dft .ssov . 6/11/01 9:27:06 AM



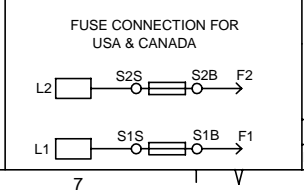
- BA: TUB
- BO: BOTTOM
- INKB: MAIN TERMINAL BLOCK
- TG: TACHOGENERATOR
- RO: ROTOR
- R: RELAY
- EL: HEATER
- AP: DRAIN PUMP
- TH: THERMISTOR
- LM: DOOR SOLENOID
- OF: OVERFLOW PROTECTION SWITCH
- IV1: INLET VALVE PREWASH AND RINSE
- IV2: INLET VALVE MAINWASH COLD
- IV3: INLET VALVE MAINWASH HOT
- IV4: INLET VALVE RINSE AGENT
- PCU: PROGRAM CONTROL UNIT
- LB: DOOR SWITCH
- MF: MOTOR BRACKET
- MO: MOTOR
- F: FILTER

- INTERNAL CONNECTION
- INTERN KOPPLING
- ALTERNATIVE WIRING
- ALTERNATIV KOPPLING

| TESTPROGRAM                  | FUNCTION LEVEL TOGGLE |            |
|------------------------------|-----------------------|------------|
| Hold start(S7)+5xE/Hi Wa(S5) | WITH PrSO/Ancr(S6)    |            |
| SWITCH                       | 1                     | 2          |
| Temp (S1)                    | V1                    | HEATER     |
| Spin (S2)                    | V2                    | DRAIN      |
| Delayed start (S3)           | V3                    | MOTOR N    |
| Super rinse (S4)             | V4                    | MOTOR G    |
| E/Hi Wa (S5)                 | DOOR                  | MOTOR SPIN |

| SPECIAL SELECTIONS             |                    |
|--------------------------------|--------------------|
| PRESS 5*START (S7) + 5*PX (SX) | SELECTION          |
| TEMP (S1)                      | CELSIUS/FAHRENHEIT |
| SPIN (S2)                      | CHILDSAFE START    |
| DELAYED START (S3)             | INLET VALVES       |

| Signal    | Voltage  | Function                  |
|-----------|----------|---------------------------|
| E1:1-E1:2 | 13 Vdc   | POWER ON DOOR CLOSED      |
| E1:3      | DATA IN  |                           |
| E1:4      | CLOCK    |                           |
| E1:5      | DATA OUT |                           |
| E2:1-E2:2 | 230 Vac  | DRAIN PUMP ON             |
| E3:1-E3:2 | 5 Vdc    | (THERMISTOR DISCONNECTED) |
| E4:1-E4:2 | 230 Vac  | IV4 ON                    |
| E4:1-E4:3 | 230 Vac  | IV3 ON                    |
| E4:1-E4:4 | 230 Vac  | IV1 ON                    |
| E4:1-E4:5 | 230 Vac  | IV2 ON                    |
| E5:1-E5:2 | 230 Vac  |                           |
| E6:1-E6:2 | 230 Vac  |                           |
| E6:3-E6:5 | 5 Vdc    |                           |
| E7:1-E7:2 | 230 Vac  |                           |
| E8:1-E8:4 | 0 V      | DOOR OPEN                 |
| E8:1-E8:4 | 230 Vac  | DOOR CLOSED               |
| E8:2-E8:3 | 230 Vac  | DOOR SOLENOID C           |
| E9:1-E9:3 | 5 Vdc    |                           |
| E9:1-E9:2 | 0.5 Vdc  | AT ZERO WATER P           |



| Pos.         | Qty | Part No. | Name of item          |
|--------------|-----|----------|-----------------------|
| Material     |     |          | Dens.Kg/dm3 Dimension |
| Scale        |     | 1:1      | Gen.tolerance         |
| Designed by  |     | MS       | Gen.tol.Angle         |
| Released by  |     | UT       | Iss by Dept Year Week |
|              |     |          | 01 44                 |
|              |     |          | PS Appd Year Week     |
| ASKO CYLINDA |     |          |                       |

This document must not be copied without our written permission, and the contents may not be used for any unauthorized purpose. Contrainvention will be prosecuted. Askö Cylinda AB

80

# 5 RINSES

| NUMBER | PROGRAM     | TEMPERATUR (MIN / MAX) °C | SPIN SPEED rpm | PRE WASH min. | MAIN WASH (MIN / MAX) min. | SPIN min. | RINSE 1 min. | RINSE 2 min. | RINSE 3 min. | SPIN min. | RINSE 4 min. | RINSE 5 min. |
|--------|-------------|---------------------------|----------------|---------------|----------------------------|-----------|--------------|--------------|--------------|-----------|--------------|--------------|
| 1      | HEAVY       | 0-95                      | MAX            | 10            | 59-105                     | 4         | 7,5          | 5            | 5            | 4         | 5            | 5            |
| 2      | NORMAL      | 0-95                      | MAX            |               | 20-105                     | 4         | 7,5          | 5            | 5            | 4         | 5            | 5            |
| 3      | LIGHT       | 0-95                      | MAX            |               | 20-60                      | 4         | 7,5          | 5            | 5            | 4         | 5            | 5            |
| 4      | SYNTHETIC   | 0-95                      | 800            |               | 35-80                      |           | 7,5          |              |              |           | 5            | 5            |
| 5      | QUICK       | 0-95                      | MAX            |               | 19-55                      |           | 3,5          |              |              |           | 5            | 5            |
| 6      | SUPER QUICK | 0-95                      | MAX            |               | 19-55                      |           | 3,5          |              |              |           |              | 5            |
| 7      | WOOL        | 0-40                      | 800            |               | 9-20                       |           | 7,5          | 5            |              |           |              | 5            |
| 8      | HANDWASH    | 0-40                      | 800            |               | 9-20                       |           | 7,5          | 5            |              |           |              | 5            |
| 9      | RINSE       |                           | MAX            |               |                            |           |              |              |              |           |              | 5            |
| 10     | SPIN        |                           | MAX            |               |                            |           |              |              |              |           |              | 5            |
| 11     | DRAIN       |                           |                |               |                            |           |              |              |              |           |              |              |

- Normal action:** Clockwise 12 seconds on 3 seconds off, counterclockwise 12 seconds on 3 seconds off, 49 rpm.
- Normal "fill" action:** Clockwise 9 seconds on 6 seconds off, counterclockwise 9 seconds on 6 seconds off, 40 rpm.  
(First 14 min of main wash)
- Super gentle action:** Clockwise 3 seconds on 57 seconds off, counterclockwise 3 seconds on 57 seconds off, 49 rpm.  
(Wool program)
- Slow super gentle action:** Clockwise 3 seconds on 57 seconds off, counterclockwise 3 seconds on 57 seconds off, 40 rpm.  
(Handwash program)
- Gentle action:** Clockwise 3 seconds on 27 seconds off, counterclockwise 3 seconds on 27 seconds off, 49 rpm.  
(Rinses in wool and handwash programs)
- Spin sequence:** Normal action clockwise and counterclockwise followed by a clockwise peak to 500 rpm, normal action clockwise and counterclockwise followed by a clockwise spin with selected spin speed. Time de

**Options: (all options are not available, in all programs)**

- Rinses:** With J3 not cut, 3 rinses will be executed. Spin between all rinses  
With J3 cut, 5 rinses will be executed.  
If super rinse is selected the machine will add two rinses.
- Presoak:** With J2 not cut, 120 min adds before main wash.  
(WM 50)
- Anticrease:** With J2 cut, 120 min adds after last spin.  
(WM 50)
- Economy:** With J1 not cut, adds 22 min to the main wash.  
(WM 50)
- High water level:** With J1 cut, more water adds to the main wash and the rinses.  
(WM 50)
- Rinse Process Sensor (RPS):** Adjusts the rinse cycle.  
(WM 66A)
- Delayed start:** 1-24 h

| Sequence    | Inlet valve |
|-------------|-------------|
| Pre-wash    | 1           |
| Main wash   | 2 (3)       |
| Rinse       | 1           |
| Final rinse | 1+4         |

All main washes starts with 4 s

| Pos.         | Qty  | Part No. | Name of item            |             |
|--------------|------|----------|-------------------------|-------------|
| Material     |      |          | Dens.Kg/dm <sup>3</sup> | Dimension   |
| Scale        |      |          | Gen.tolerance           | Description |
| Designed by  | SOSV |          | Gen.tol.Angle           | Function    |
| Released by  |      |          | Iss by Dept             | Year        |
|              |      |          | UT                      | 01          |
|              |      |          | Week                    | 02          |
| ASKO CYLINDA |      |          |                         |             |

| Rev ind | Revision | Appd | Year | Week |
|---------|----------|------|------|------|
|         |          |      |      |      |

80