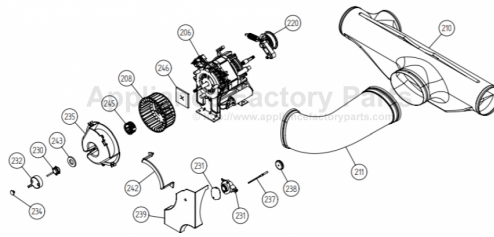


This Owner's Manual is provided and hosted by [Appliance Factory Parts](#).



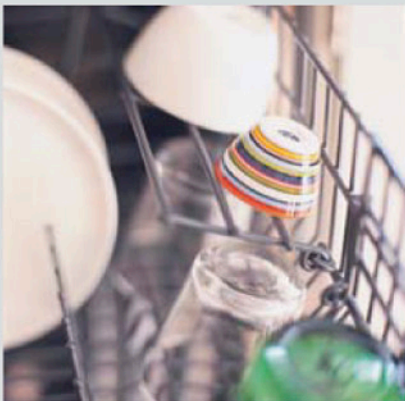
ASKO T731WH Owner's Manual

[Shop genuine replacement parts for ASKO T731WH](#)



[Find Your ASKO Dryer Parts - Select From 73 Models](#)

----- Manual continues below -----



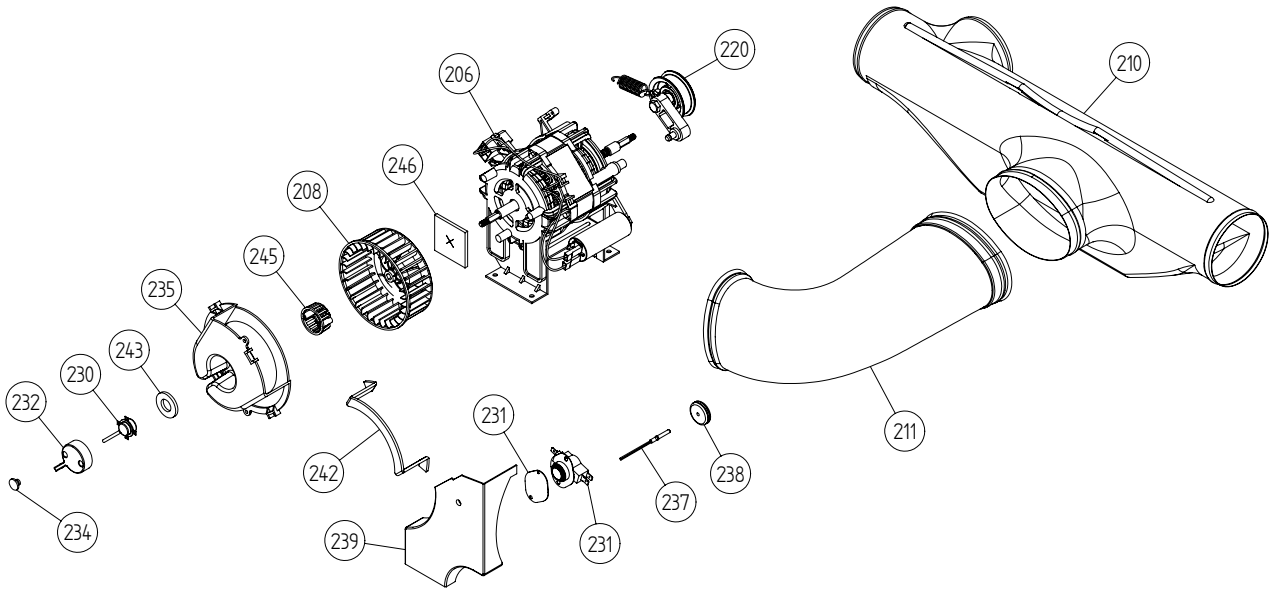
Spare Parts Catalogue

Dryers \ 700 Series
Type: TD30US
Model: T731 US White

Prod. No: 10773120
May 17th 2005

AM Appliances Group

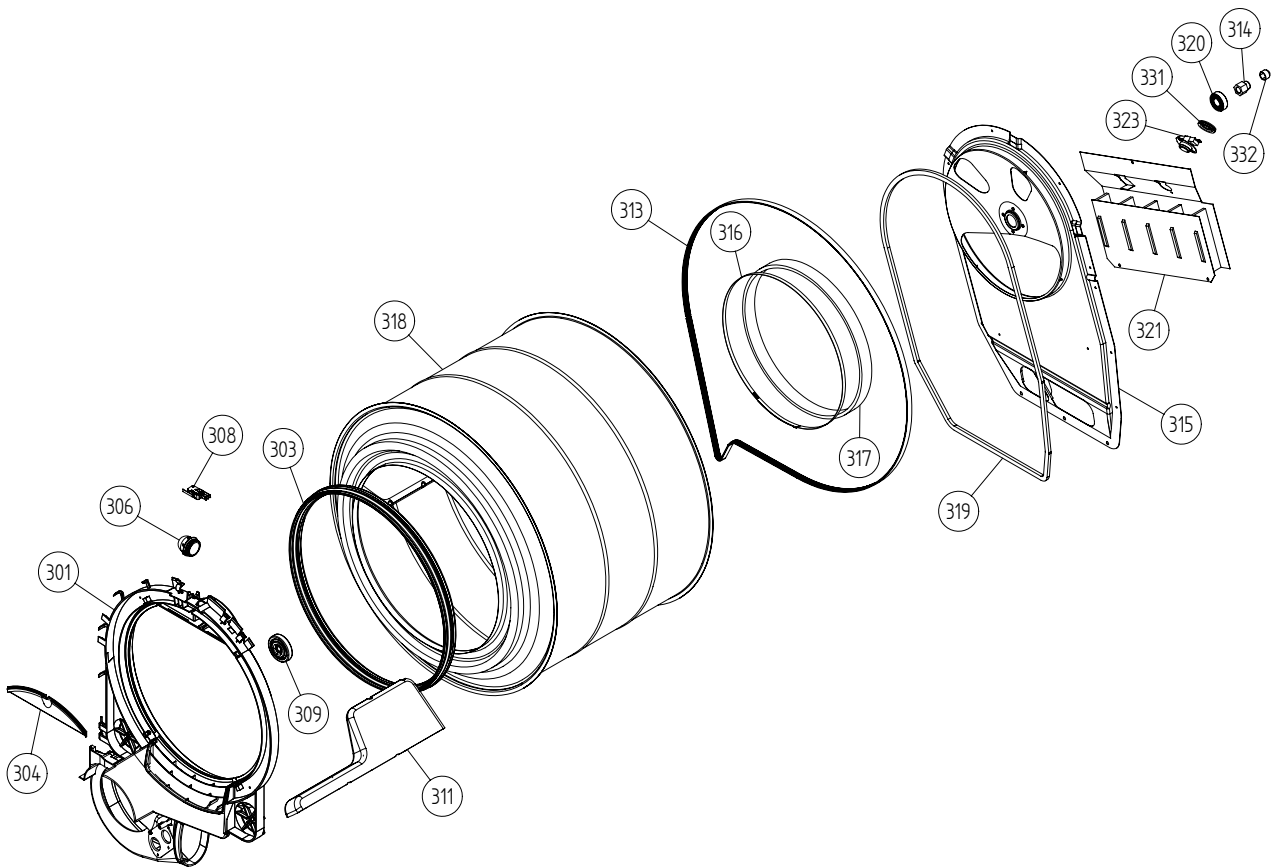
P.O. Box 851805 • Richardson • TX 75085-1805
789 N. Grove Road • Suite 103 • Richardson • TX 75081



Lower session

ASKO, T731 US - White #10773120 (TD30US)

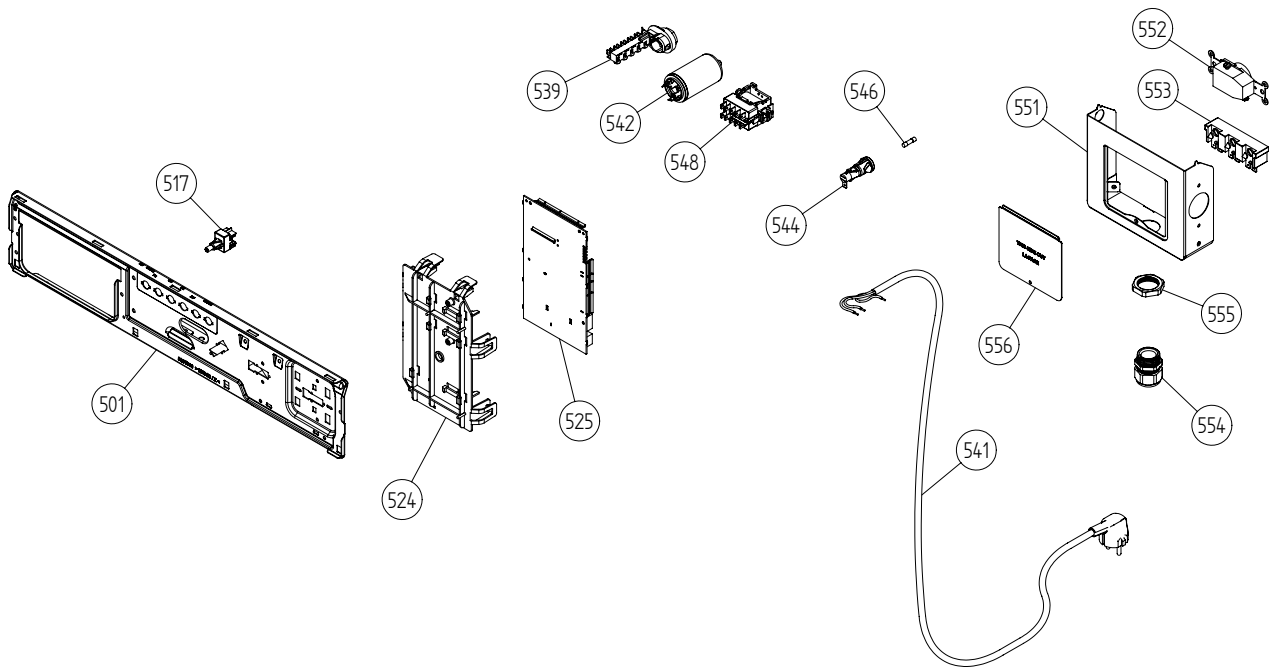
| Pos | Spare part No. | Description | Qty | Comment |
|------------|-----------------------|------------------------------|------------|----------------|
| 206 | 8061895 | Motor Dryer 700s | 1 Pcs | |
| 206-a | 8901969 | Screw | 4 Pcs | |
| 206-b | 8054268 | Capacitor Dryer Motor 02/05 | 1 Pcs | |
| 208 | 8055200 | Blower Dryer Front All | 1 Pcs | |
| 208-a | 8901192 | Locking Nut WM 03/05 | 1 Pcs | |
| 210 | 8052638 | TTube w/o Recirc holes | 1 Pcs | |
| 211 | 8052639 | Exhaust Canal Bend | 1 Pcs | |
| 220 | 8801214 | TENSION ARM W.BALL BEARING | 1 Pc's | |
| 230 | 8061855 | Humidity Sensor 760780 | 1 Pcs | |
| 230-a | 8902042 | Screw Protective Cover Dryer | 2 Pcs | |
| 231 | 8050091 | Cover Plate | 1 Pcs | |
| 231 | 8065306 | THERMOSTAT 70 | 1 Pcs | |
| 231-a | 8902042 | Screw Protective Cover Dryer | 1 Pcs | |
| 231-a | 8900369 | Screw T25 | 1 Pcs | |
| 232 | 8061944 | Guard Hum. Sensor | 1 Pcs | |
| 234 | 8061959 | Plug Hum. Sensor | 2 Pcs | |
| 235 | 8061899 | Fan Casing Lid T700 | 1 Pcs | |
| 235 | 8076330-0 | FAN CASING LID UL4 | 1 Pcs | |
| 235-a | 8902042 | Screw Protective Cover Dryer | 2 Pcs | |
| 237 | 8061900 | Thermistor 760780 | 1 Pcs | |
| 238 | 8053050 | GROMMET | 1 Pcs | |
| 239 | 8076948 | PROTECTION FAN HOUSE ASM | 1 Pc's | |
| 239-a | 8902042 | Screw Protective Cover Dryer | 1 Pcs | |
| 242 | 8064184 | SEALING COVER FAN HOUSE | 1 Pcs | |
| 243 | 8063897 | SEALING HUMIDITY SENSOR | 1 Pcs | |
| 245 | 8061943 | Guard for Humidity sen. | 1 Pcs | |
| 246 | 8058323 | SHAFT SEAL DRYER | 1 Pcs | |



Cylinder and related parts

ASKO, T731 US - White #10773120 (TD30US)

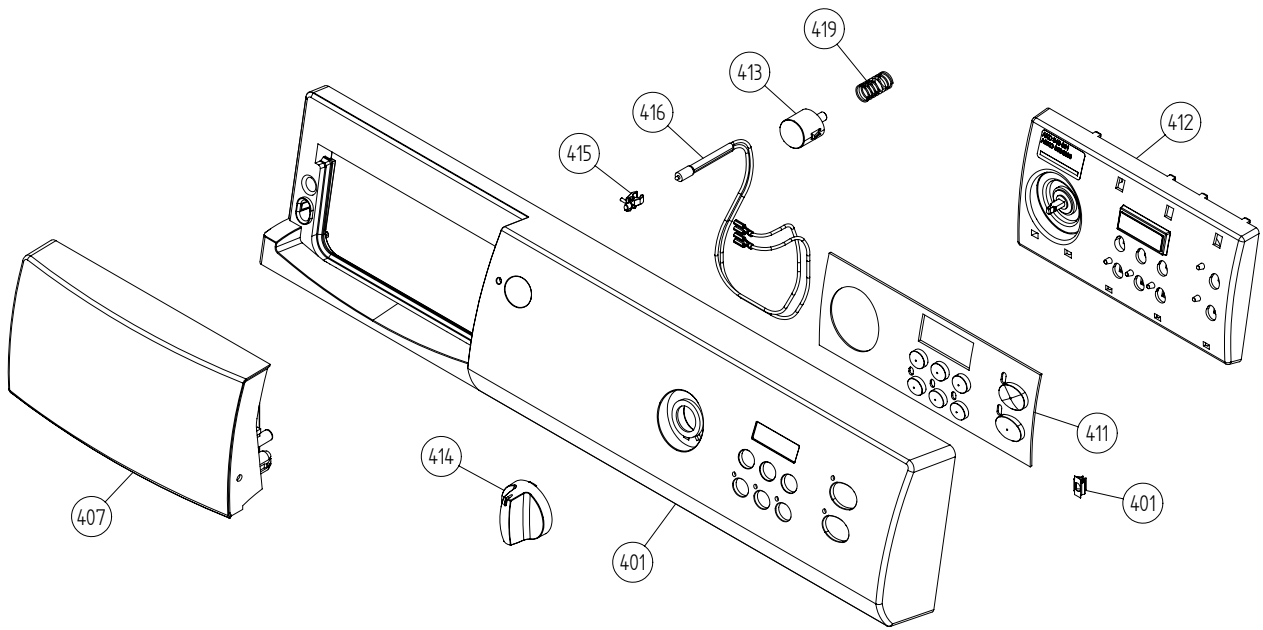
| Pos | Spare part No. | Description | Qty | Comment |
|-------|----------------|------------------------------|--------|---------|
| 301 | 8801216 | Front frame compl. TD21 | 1 Pcs | |
| 301-a | 8902066 | Screw | 4 Pcs | |
| 303 | 8061821 | Front Felt Seal T700 | 1 Pcs | |
| 304 | 8061932-49 | Lamp housing lid grey TD21 | 1 Pcs | |
| 306 | 8061887 | Lamp Chimney | 1 Pcs | |
| 308 | 8053107 | Micro Switch Dryer 03/05 | 1 Pcs | |
| 309 | 8052622 | Drum Roller Frt. TD | 1 Pcs | |
| 311 | 8052589 | Paddle | 2 Pcs | |
| 311-a | 8902099 | Screw | 5 Pcs | |
| 313 | 8065710 | Belt 700s | 1 Pcs | |
| 314 | 8052632 | Bushing Rear Drum 03/05 TD | 1 Pcs | |
| 315 | 8061851 | Rear Panel Inner T700 | 1 Pcs | |
| 315-a | 8900369 | Screw T25 | 13 Pcs | |
| 316 | 8055054 | Real Seal Clamp | 1 Pcs | |
| 317 | 8052649 | Felt Strip Rear | 1 Pcs | |
| 317 | 8064440 | Felt sealing rear | 1 Pcs | |
| 318 | 8061800 | Cylinder Dryer TD20 Comp. | 1 Pcs | |
| 319 | 8059712 | Rubber Strip | 1 Pcs | |
| 320 | 8004439 | Bearing Dryer Rear Panel All | 1 Pcs | |
| 321 | 8063808 | Heater Element 2500 W700s | 1 Pcs | |
| 321-a | 8900369 | Screw T25 | 2 Pcs | |
| 323 | 8008487 | TStat Man. Reset TD | 1 Pcs | |
| 323 | 8064905 | Atuo Reset TStat 175C / TDC | 1 Pcs | |
| 323-a | 8900369 | Screw T25 | 1 Pcs | |
| 331 | 8052650 | Diaphragm Overheat | 1 Pcs | |
| 332 | 8064151 | CAP OF BOLT | 1 Pcs | |



Upper session

ASKO, T731 US - White #10773120 (TD30US)

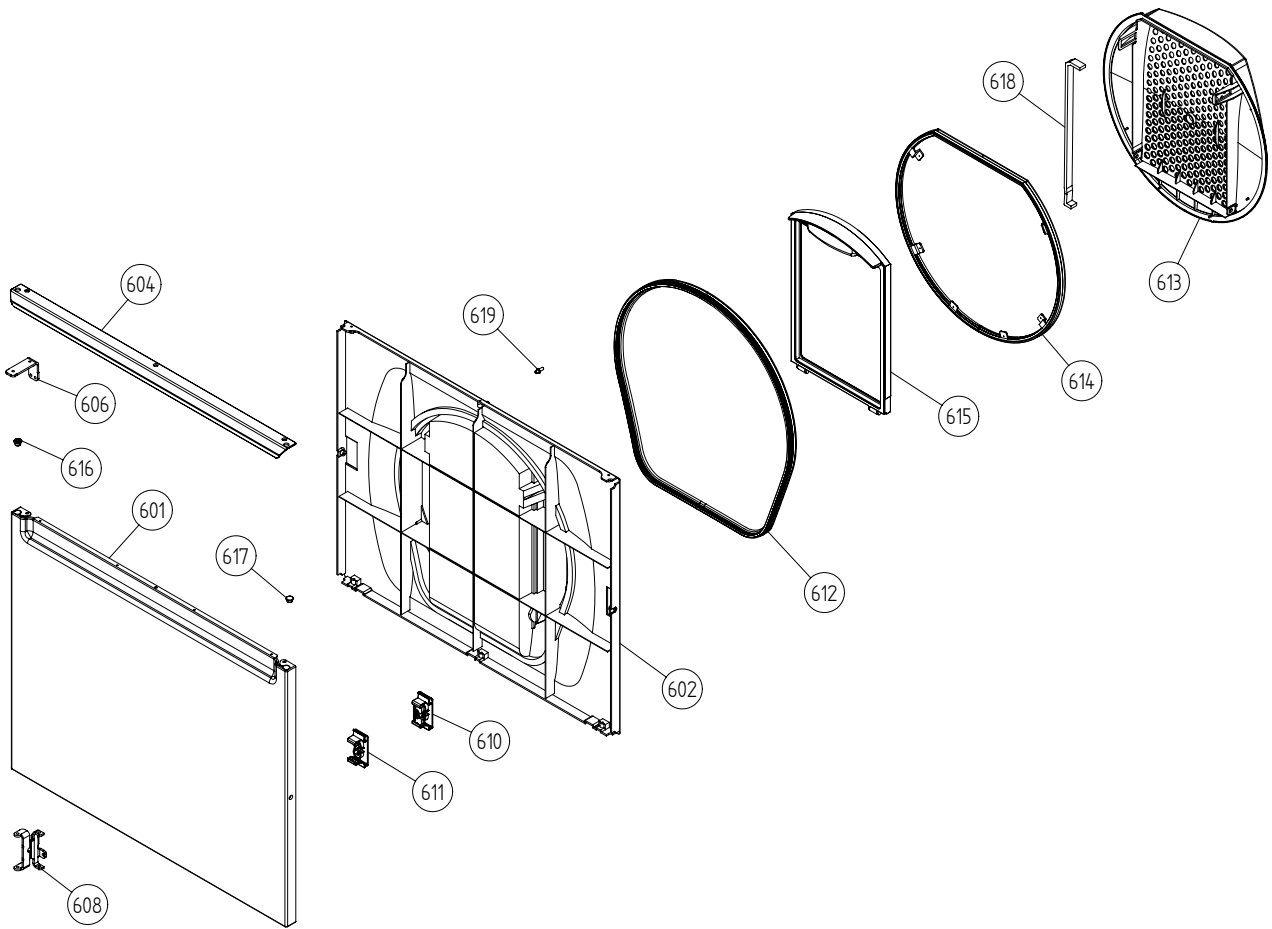
| Pos | Spare part No. | Description | Qty | Comment |
|-------|----------------|--------------------------------|--------|---------|
| 501 | 8061690 | Front Beam 600/700 Series | 1 Pcs | |
| 501-a | 8900338 | Screw 20 Torx Self Tapping | 2 Pcs | |
| 501-b | 8901413 | Lock Washer laundry tops | 2 Pcs | |
| 501-c | 8902087 | Screw Plastic Housing 20 Torx | 2 Pcs | |
| 517 | 8061875 | Switch ON/OFF WM20 | 1 Pcs | |
| 524 | 8061921 | Holder Prog Control WMD600/700 | 1 Pcs | |
| 525 | 8077347 | CONTROL UNIT TD21 6KG UL4 | 1 Pc's | |
| 529 | 8087500 | Cable Kit TD3033A4044A | 1 Pcs | |
| 539 | 8061660 | Terminal Block 5Pole | 1 Pcs | |
| 539-a | 8901097 | Screw Terminal | 1 Pcs | |
| 541 | 8063972 | Cord Set | 1 Pcs | |
| 542 | 8058558 | RFI 05/06 WM | 1 Pcs | |
| 542-a | 8901155 | Nut | 1 Pcs | |
| 542-b | 8901419 | Lock Washer | 1 Pcs | |
| 544 | 8065573 | FUSE HOLDER GREY 15A US/CA | 2 Pcs | |
| 544 | 8054613 | Fuse Holder Laundry | 2 Pcs | |
| 544-a | 8058140 | BK/MDA15 Fuse All laundry | 2 Pcs | |
| 544-b | 8055725 | Hub Fuse Holder | 2 Pcs | |
| 545 | 8055725 | Hub Fuse Holder | 2 Pcs | |
| 546 | 8058140 | BK/MDA15 Fuse All laundry | 2 Pcs | |
| 548 | 8064179 | Relay 10 terminals WM | 1 Pcs | |
| 551 | 8063931 | EL.BOX US/CA COMPL. | 1 Pc's | |
| 551 | 8065734 | EL. BOX USA TD21 | 1 Pc's | |
| 551 | 8076324 | Connection box T711 | 1 Pcs | |
| 551 | 8061849 | Ele. Box T700 Series | 1 Pcs | |
| 551-a | 8901097 | Screw Terminal | 1 Pcs | |
| 552 | 8061033 | Subs to 8061455 | 1 Pcs | |
| 553 | 8061891 | Terminal Block DryerTD 20 | 1 Pcs | |
| 554 | 8060462 | Grommet | 1 Pcs | |
| 555 | 8060463 | Lock Nut | 1 Pcs | |
| 556 | 8063756 | Cover Terminal block T700s | 1 Pcs | |
| 556-a | 8901097 | Screw Terminal | 1 Pcs | |



Control panel

ASKO, T731 US - White #10773120 (TD30US)

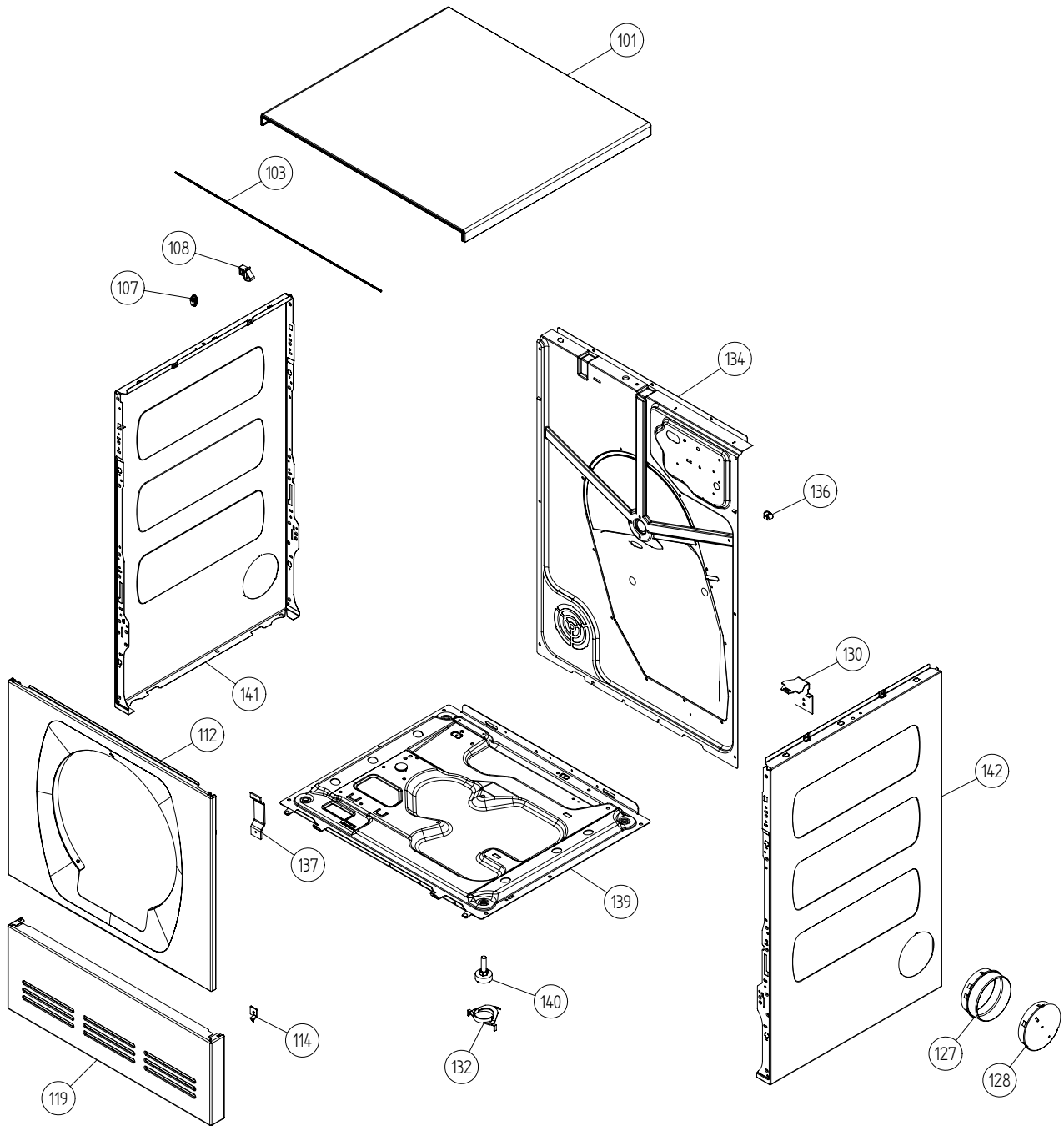
| Pos | Spare part No. | Description | Qty | Comment |
|-------|----------------|--------------------------------|-------|---------|
| 401 | 8076192-0-UL | T731 Control panel with grey A | 1 Pcs | |
| 401 | 8076555-0-UL | Control Panel T731 | 1 Pcs | |
| 401-a | 8901591 | Clip/Panel 600700s | 4 Pcs | |
| 403 | 8064947 | Program info label TD30 titani | 1 Pcs | |
| 403 | 8076558 | LABEL PROG.INFO. TD30/40 US/CA | 1 Pcs | |
| 407 | 8061846-0-UL | Discontinued | 0 Pcs | |
| 411 | 8065653-0 | Pushbottons/ T731 | 1 Pcs | |
| 412 | 8064260 | Display Unit WM50 TD30/40 | 1 Pcs | |
| 413 | 8061902-0 | On/Off Button 600/700 Series | 1 Pcs | |
| 414 | 8064390-0 | Knob WM50 TD30/40 | 1 Pcs | |
| 415 | 8061822 | Decor Lens 06 Laundry | 1 Pcs | |
| 416 | 8060478 | Ind. Lamp 600s WM | 1 Pcs | |
| 419 | 8061857 | Spring Main Switch WMD 20 | 1 Pcs | |
| 490 | 8065662 | INSTRUCT TD21 ENGLISH US/CA | 1 Pcs | |
| 490 | 8065663 | INSTRUCTIONS TD21 FRENCH US/CA | 1 Pcs | |
| 490 | 8065664 | INSTRUCT TD21 SPANISH US/CA | 1 Pcs | |
| 490 | 8076530 | INSTRUCT. TD21 ENGLISH US/CA | 1 Pcs | |
| 490 | 8076531 | INSTRUCTIONS TD21 FRENCH US/CA | 1 Pcs | |
| 490 | 8076532 | INSTRUCT. TD21 SPANISH US/CA | 1 Pcs | |
| 490 | 8076812 | INSTRUCT. TD21 ENGLISH US/CA | 1 Pcs | |
| 490 | 8076813 | INSTRUCTIONS TD21 FRENCH US/CA | 1 Pcs | |
| 490 | 8076814 | INSTRUCT. TD21 SPANISH US/CA | 1 Pcs | |
| 490 | 8065674 | INSTRUCTIONS T731 ASKO US GB | 1 Pcs | |
| 490 | 8065675 | INSTRUCTIONS T731 ASKO US FR | 1 Pcs | |
| 490 | 8065676 | INSTRUCTIONS T731 ASKO US ES | 1 Pcs | |



Outer door

ASKO, T731 US - White #10773120 (TD30US)

| Pos | Spare part No. | Description | Qty | Comment |
|-------|----------------|-------------------------------|-------|---------|
| 601 | 8061733-0 | Outer Door 600/700 Series | 1 Pcs | |
| 602 | 8061810 | Inner Door Dryer T700 Series | 1 Pcs | |
| 602-a | 8902068 | Screw | 5 Pcs | |
| 604 | 8061813-0 | Door Handle T700 | 1 Pcs | |
| 606 | 8061803-0 | Hinge Pin Upper compl. 700s | 1 Pcs | |
| 606 | 8061805-0 | hinge T711 | 1 Pcs | |
| 606 | 8061805 | SUB TO 80618050 hinge T711 | 1 Pcs | |
| 606-a | 8901097 | Screw Terminal | 2 Pcs | |
| 606-b | 8901619 | Pop Rivet Det Comp | 1 Pcs | |
| 608 | 8061807-0 | Lower Hinge Lower Compl. | 1 Pcs | |
| 608 | 8061806-0 | hinge lower T711 | 1 Pcs | |
| 608-a | 8900338 | Screw 20 Torx Self Tapping | 2 Pcs | |
| 608-b | 8901097 | Screw Terminal | 1 Pcs | |
| 610 | 8061878 | Magnet Door T700s | 1 Pcs | |
| 611 | 8061886 | Lock Holder T700 Series | 0 Pcs | |
| 612 | 8061815 | Seal Dryer Door T700s | 1 Pcs | |
| 613 | 8065840 | Filter Holder Compl. | 1 Pcs | |
| 614 | 8065274 | Filter bracket T711 | 1 Pcs | |
| 615 | 8061812 | Double Lint filter 700s | 1 Pcs | |
| 616 | 8061865-0 | Bushing Hinge Pin T700s | 2 Pcs | |
| 617 | 8061953-0 | Door Plug T700s | 1 Pcs | |
| 618 | 8801250 | Kit sealing strip/filter hold | 1 Pcs | |
| 619 | 8064240 | Pin Door Switch Dryer | 1 Pcs | |

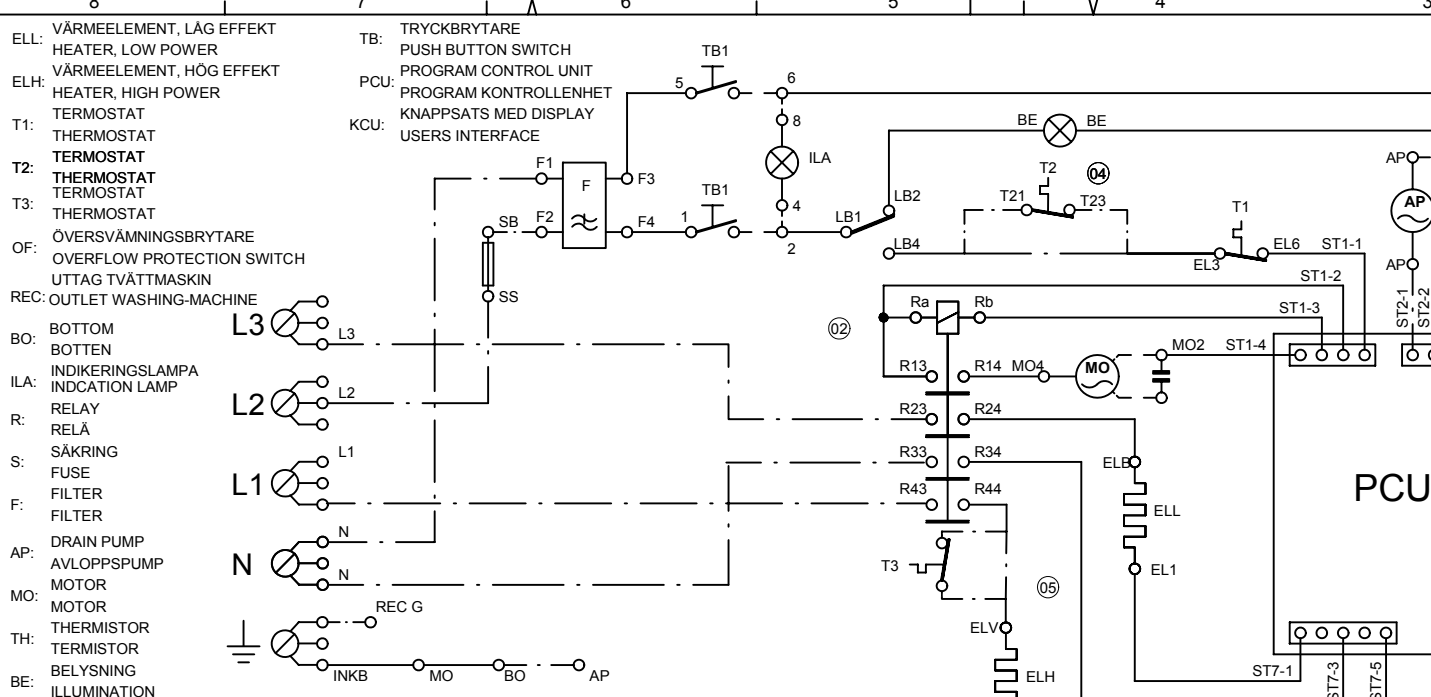


Outer casing

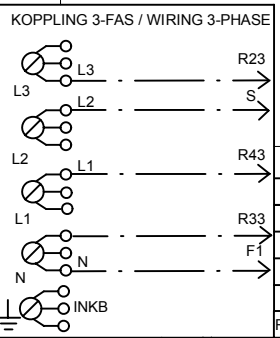
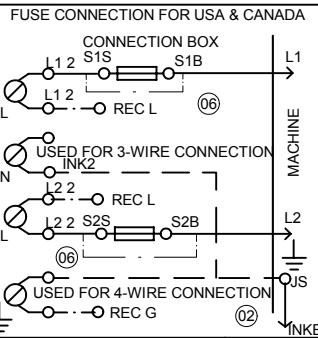
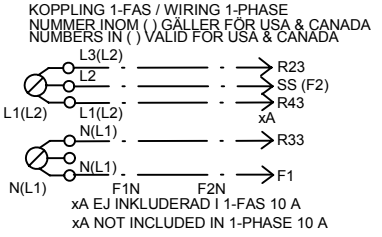
ASKO, T731 US - White #10773120 (TD30US)

| Pos | Spare part No. | Description | Qty | Comment |
|-------|----------------|------------------------------|--------|---------|
| 101 | 8061817-0 | Top White W600s T700s | 1 Pcs | |
| 101-a | 8900338 | Screw 20 Torx Self Tapping | 3 Pcs | |
| 101-b | 8901413 | Lock Washer laundry tops | 2 Pcs | |
| 103 | 8064062 | Top Cover Strip | 1 Pcs | |
| 107 | 8061763 | Clip Front Plate 600700s | 2 Pcs | |
| 108 | 8061916 | CABLE HOLDER WMD20 | 2 Pcs | |
| 112 | 8061847-0 | Front Plate 700 Series | 1 Pcs | |
| 112-a | 8900338 | Screw 20 Torx Self Tapping | 2 Pcs | |
| 112-b | 8901413 | Lock Washer laundry tops | 2 Pcs | |
| 114 | 8064177 | Hook Lower Pane | 2 Pcs | |
| 114-a | 8900338 | Screw 20 Torx Self Tapping | 2 Pcs | |
| 119 | 8801247-0 | Lower Cover w/Holes | 1 Pcs | |
| 127 | 8052641 | Collar Vent Exhaust TD | 1 Pcs | |
| 128 | 8052640-0-UL | LID EXHAUST CANAL WHITE UL4 | 2 Pcs | |
| 130 | 8053980 | STACKING Bracket ALL TDs Mus | 2 Pcs | |
| 132 | 8064114 | Holdes Dryer Feet Stacking | 1 Pcs | |
| 134 | 8064196 | REAR PANEL OUTER PUNCHED | 1 Pcs | |
| 134-a | 8900338 | Screw 20 Torx Self Tapping | 10 Pcs | |
| 136 | 8061915 | Cable Holder T700 | 1 Pcs | |
| 139 | 8061618 | BASE PAN WMD20 | 1 Pcs | |
| 140 | 8059334 | Leveling Leg Comp. WMD 20 | 4 Pcs | |
| 141 | 8801175-0 | Panels left side T700 T760 | 1 Pcs | |
| 142 | 8801176-0 | Panel R Side w/Hole T700 | 1 Pcs | |

S:\UW\md2011_Tryckunderlag\Kopplingschema\061866 TD33_44_TDC33_44\061866-06gskickad.dft , pesv , 2003-01-21 09:16:08



- POWER ON, PROGRAM IN STANDBY, DOOR CLOSED
- ST1-1 - ST11-1 230 Vac
 - ST2-1 - ST2-2 0 Vac (TD44)
 - ST3-1 - ST3-2 0 V (TD44) CLOSED SWITCH
 - ST3-1 - ST3-2 13 Vdc (TD44) OPEN SWITCH
 - ST5-1 - ST5-4 15 Vdc
 - ST5-2 - ST5-3 1-15 mVdc DEPENDENT ON THE HUMIDITY
 - ST6-1 - ST6-2 5 Vdc THERMISTOR DISCONNECTED
 - ST7-1 - ST7-3 0 V
 - ST7-5 - ST7-3 0 v
 - ST8-1 - ST8-2 13 Vdc
 - ST8-3 DATA IN
 - ST8-4 CLOCK
 - ST8-5 DATA OUT



- PROGRAM RUNNING,
- ST1-1 - ST11-1 230 Vac
 - ST1-1 - ST1-3 230 Vac
 - ST1-1 - ST1-4 230 Vac
 - ST2-1 - ST2-2 230 Vac (TD44) 30 SECONDS
 - ST3-1 - ST3-2 0 V (TD44) CLOSED SWITCH
 - ST3-1 - ST3-2 13 Vdc (TD44) OPEN SWITCH
 - ST5-1 - ST5-4 15 Vdc
 - ST5-2 - ST5-3 1-15 mVdc DEPENDENT ON THE HUMIDITY
 - ST6-1 - ST6-2 5 Vdc THERMISTOR
 - ST7-1 - R24 230 Vac HEATER ON
 - ST7-5 - R44 230 Vac HEATER ON
 - ST8-1 - ST8-2 13 Vdc
 - ST8-3 DATA IN
 - ST8-4 CLOCK
 - ST8-5 DATA OUT

| Pos. | Qty | Part No. | Name of item | Dens./Kg |
|-------------|-----|----------|------------------------|----------|
| Material | | | | |
| Scale | | | Gen.tolerance | |
| Designed by | | | Gen.tol.Angle | |
| Released by | | | Iss by Dept Year W | |
| | | | UT 98 0 | |

ASKO CYLINDA

This document must not be copied without our written permission, and the contents thereof must not be imparted to a third party without the use of any unauthorized purpose. Askö Cylinda AB