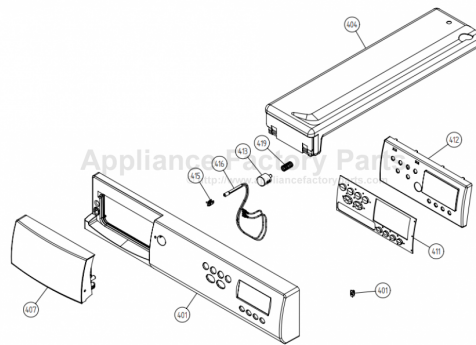


This Owner's Manual is provided and hosted by [Appliance Factory Parts](#).



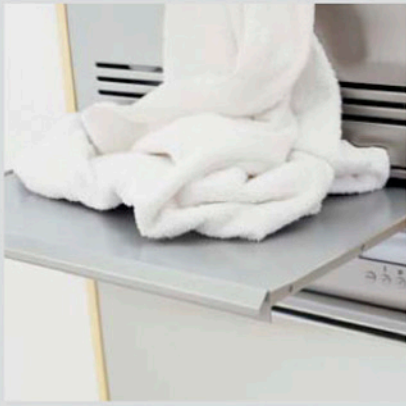
# ASKO T781WH Owner's Manual

[Shop genuine replacement parts for ASKO T781WH](#)



[Find Your ASKO Dryer Parts - Select From 73 Models](#)

----- Manual continues below -----



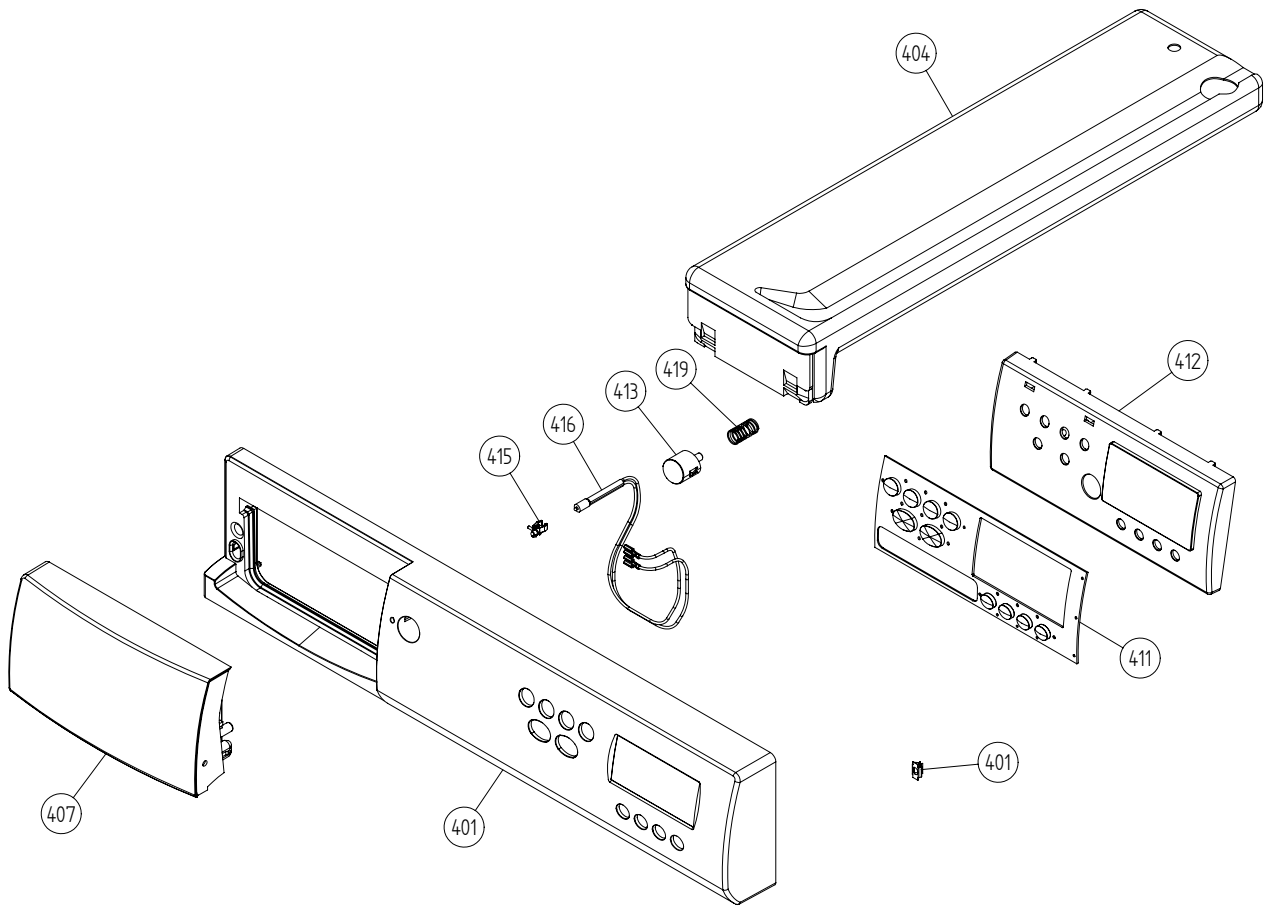
## Spare Parts Catalogue

Dryers \ 700 Series  
Type: TD44US  
Model: T781 US White

Prod. No: 10778110  
April 15th 2005

**AM Appliances Group**

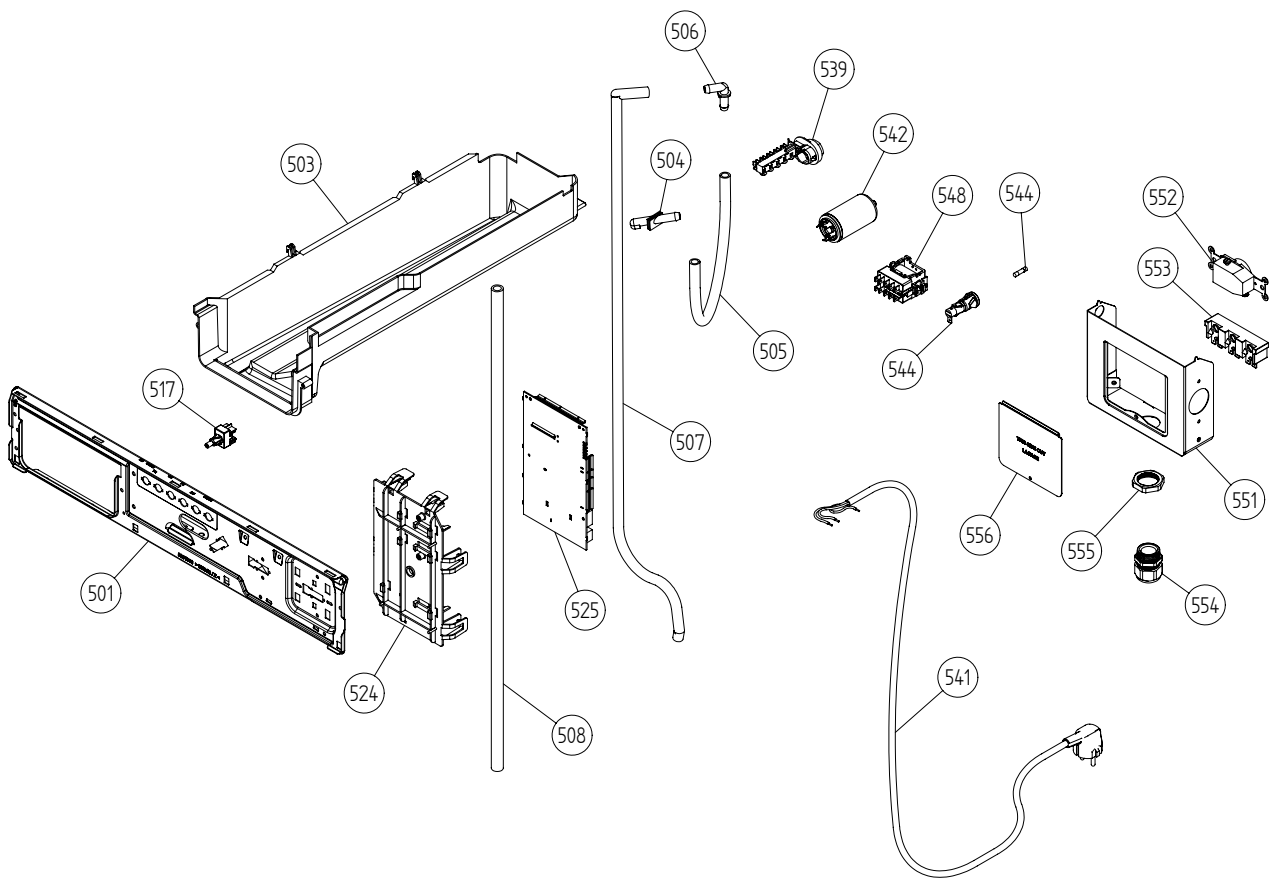
P.O. Box 851805 • Richardson • TX 75085-1805  
789 N. Grove Road • Suite 103 • Richardson • TX 75081



## Control panel

### ASKO, T781 US - White #10778110 (TD44US)

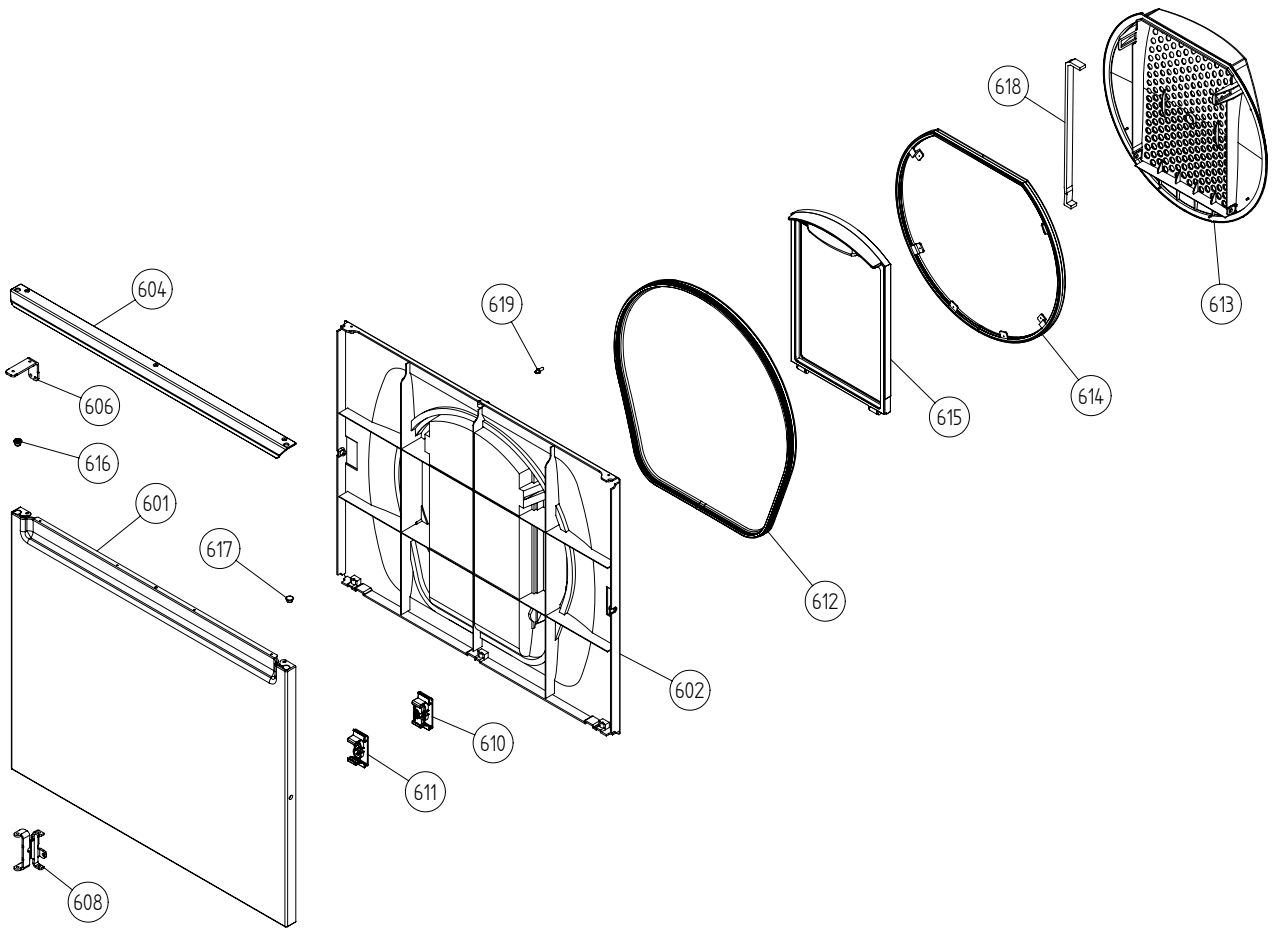
| Pos   | Spare part No. | Description                    | Qty   | Comment |
|-------|----------------|--------------------------------|-------|---------|
| 401   | 8076068-0-UL   | PANEL W.HANDLE T781 ASKO UL4   | 1 Pcs |         |
| 401-a | 8901591        | Clip/Panel 600700s             | 4 Pcs |         |
| 404   | 8061941        | Water Tank 700 Series          | 1 Pcs |         |
| 407   | 8061846-0-UL   | Discontinued                   | 0 Pcs |         |
| 411   | 8064276-0      | Push button w/print TD33/44    | 1 Pcs |         |
| 412   | 8076271        | Panel Board 6000               | 1 Pcs |         |
| 413   | 8061902-0      | On/Off Button 600/700 Series   | 1 Pcs |         |
| 415   | 8061822        | Decor Lens 06 Laundry          | 1 Pcs |         |
| 416   | 8060478        | Ind. Lamp 600s WM              | 1 Pcs |         |
| 419   | 8061857        | Spring Main Switch WMD 20      | 1 Pcs |         |
| 490   | 8065662        | INSTRUCT TD21 ENGLISH US/CA    | 1 Pcs |         |
| 490   | 8065663        | INSTRUCTIONS TD21 FRENCH US/CA | 1 Pcs |         |
| 490   | 8065664        | INSTRUCT TD21 SPANISH US/CA    | 1 Pcs |         |
| 490   | 8064638        | INSTR. GENERAL TD21 US/CA      | 1 Pcs |         |



## Upper session

### ASKO, T781 US - White #10778110 (TD44US)

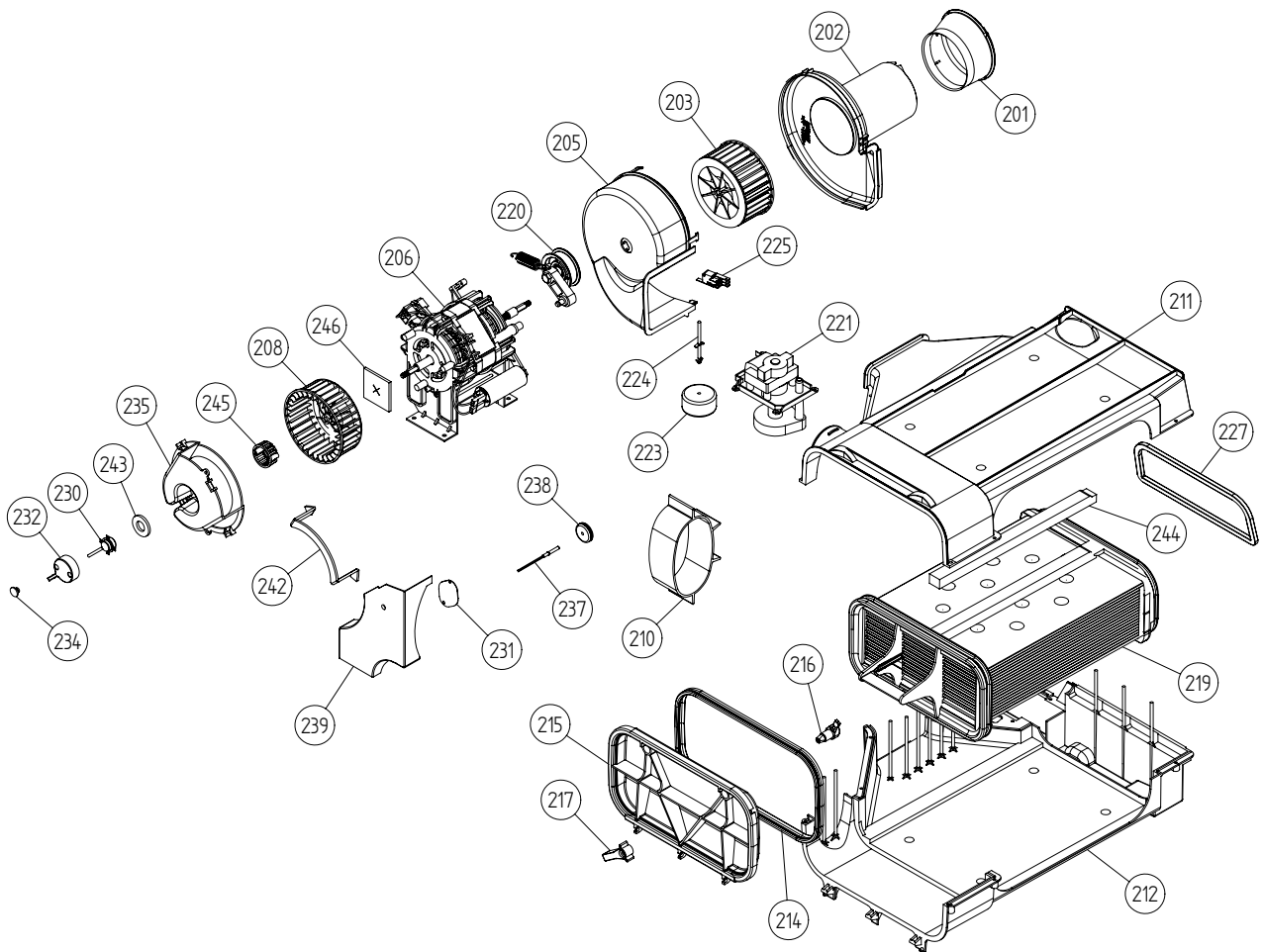
| Pos   | Spare part No. | Description                    | Qty   | Comment |
|-------|----------------|--------------------------------|-------|---------|
| 501   | 8061690        | Front Beam 600/700 Series      | 1 Pcs |         |
| 501-a | 8900338        | Screw 20 Torx Self Tapping     | 2 Pcs |         |
| 501-b | 8901413        | Lock Washer laundry tops       | 2 Pcs |         |
| 501-c | 8902087        | Screw Plastic Housing 20 Torx  | 2 Pcs |         |
| 503   | 8061880        | Water Housing Dry 700          | 1 Pcs |         |
| 503-a | 8902087        | Screw Plastic Housing 20 Torx  | 2 Pcs |         |
| 504   | 8053077        | NOZZLE                         | 1 Pcs |         |
| 505   | 8057431        | Rubber Hose                    | 1 Pcs |         |
| 506   | 8054072        | NIPPLE WATER HOSE              | 1 Pcs |         |
| 507   | 8054732        | Rubber Hose                    | 1 Pcs |         |
| 508   | 8053881        | Rubber Hose                    | 1 Pcs |         |
| 517   | 8061875        | Switch ON/OFF WM20             | 1 Pcs |         |
| 524   | 8061921        | Holder Prog Control WMD600/700 | 1 Pcs |         |
| 525   | 8077347        | CONTROL UNIT TD21 6KG UL4      | 1 Pcs |         |
| 529   | 8087500        | Cable Kit TD3033A4044A         | 1 Pcs |         |
| 539   | 8061660        | Terminal Block 5Pole           | 1 Pcs |         |
| 539-a | 8901097        | Screw Terminal                 | 1 Pcs |         |
| 542   | 8058558        | RFI 05/06 WM                   | 1 Pcs |         |
| 542-a | 8901155        | Nut                            | 1 Pcs |         |
| 542-b | 8901419        | Lock Washer                    | 1 Pcs |         |
| 544   | 8065573        | FUSE HOLDER GREY 15A US/CA     | 2 Pcs |         |
| 544   | 8054613        | Fuse Holder Laundry            | 2 Pcs |         |
| 544-a | 8058140        | BK/MDA15 Fuse All laundry      | 2 Pcs |         |
| 544-b | 8055725        | Hub Fuse Holder                | 2 Pcs |         |
| 545   | 8055725        | Hub Fuse Holder                | 2 Pcs |         |
| 546   | 8058140        | BK/MDA15 Fuse All laundry      | 2 Pcs |         |
| 548   | 8064179        | Relay 10 terminals WM          | 1 Pcs |         |
| 551   | 8065734        | EL. BOX USA TD21               | 1 Pcs |         |
| 551   | 8076324        | Connection box T711            | 1 Pcs |         |
| 551   | 8061849        | Ele. Box T700 Series           | 1 Pcs |         |
| 551   | 8063931        | EL.BOX US/CA COMPL.            | 1 Pcs |         |
| 551-a | 8901097        | Screw Terminal                 | 1 Pcs |         |
| 552   | 8061033        | Subs to 8061455                | 1 Pcs |         |
| 553   | 8061891        | Terminal Block DryerTD 20      | 1 Pcs |         |
| 554   | 8060462        | Grommet                        | 1 Pcs |         |
| 555   | 8060463        | Lock Nut                       | 1 Pcs |         |
| 556   | 8063756        | Cover Terminal block T700s     | 1 Pcs |         |
| 556-a | 8901097        | Screw Terminal                 | 1 Pcs |         |



## Outer door

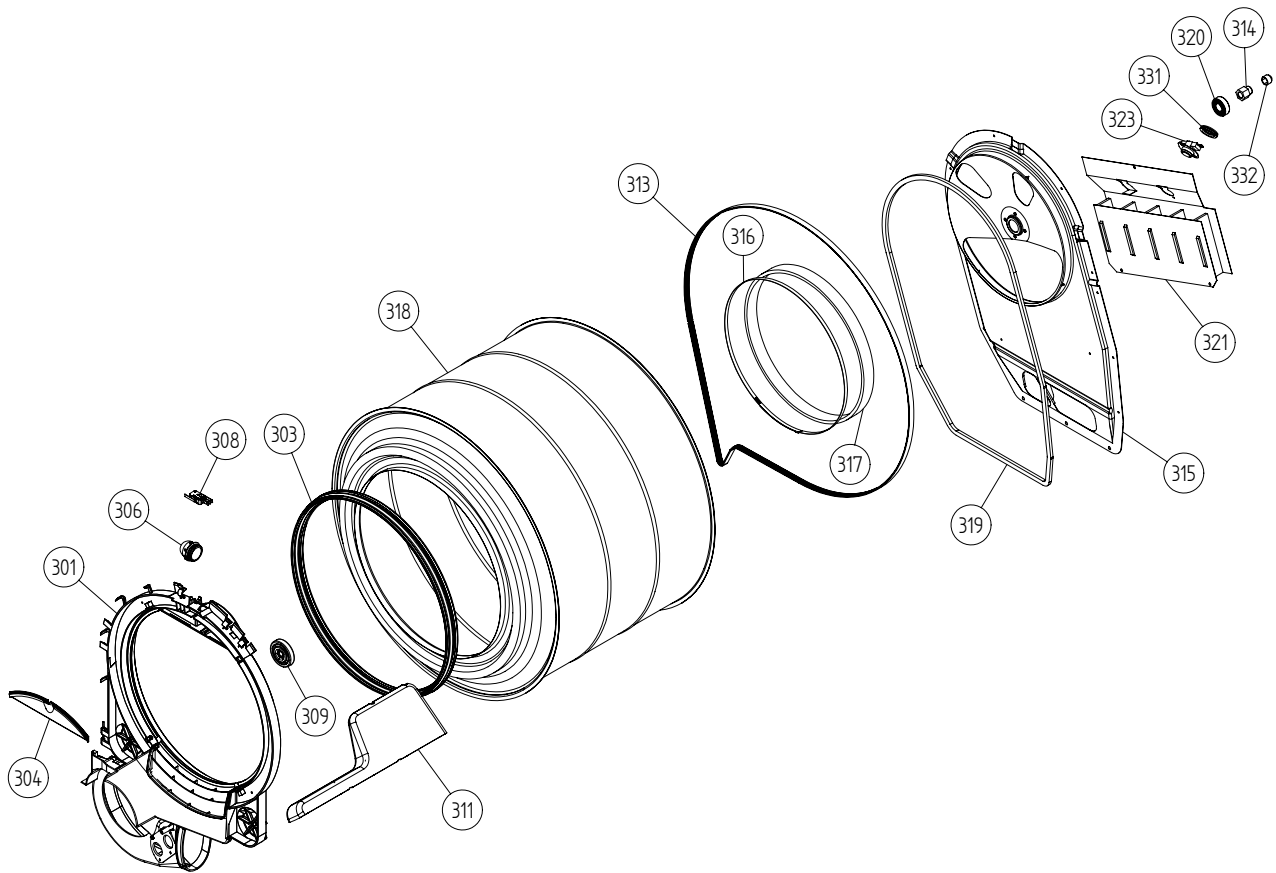
### ASKO, T781 US - White #10778110 (TD44US)

| Pos   | Spare part No. | Description                   | Qty   | Comment |
|-------|----------------|-------------------------------|-------|---------|
| 601   | 8061733-0      | Outer Door 600/700 Series     | 1 Pcs |         |
| 602   | 8061810        | Inner Door Dryer T700 Series  | 1 Pcs |         |
| 602-a | 8902068        | Screw                         | 5 Pcs |         |
| 604   | 8061813-0      | Door Handle T700              | 1 Pcs |         |
| 606   | 8061803-0      | Hinge Pin Upper compl. 700s   | 1 Pcs |         |
| 606   | 8061805-0      | hinge T711                    | 1 Pcs |         |
| 606   | 8061805        | SUB TO 80618050 hinge T711    | 1 Pcs |         |
| 606-a | 8901097        | Screw Terminal                | 2 Pcs |         |
| 606-b | 8901619        | Pop Rivet Det Comp            | 1 Pcs |         |
| 608   | 8061807-0      | Lower Hinge Lower Compl.      | 1 Pcs |         |
| 608   | 8061806-0      | hinge lower T711              | 1 Pcs |         |
| 608-a | 8900338        | Screw 20 Torx Self Tapping    | 2 Pcs |         |
| 608-b | 8901097        | Screw Terminal                | 1 Pcs |         |
| 610   | 8061878        | Magnet Door T700s             | 1 Pcs |         |
| 611   | 8061886        | Lock Holder T700 Series       | 0 Pcs |         |
| 612   | 8061815        | Seal Dryer Door T700s         | 1 Pcs |         |
| 613   | 8065840        | Filter Holder Compl.          | 1 Pcs |         |
| 614   | 8065274        | Filter bracket T711           | 1 Pcs |         |
| 615   | 8061812        | Double Lint filter 700s       | 1 Pcs |         |
| 616   | 8061865-0      | Bushing Hinge Pin T700s       | 2 Pcs |         |
| 617   | 8061953-0      | Door Plug T700s               | 1 Pcs |         |
| 618   | 8801250        | Kit sealing strip/filter hold | 1 Pcs |         |
| 619   | 8064240        | Pin Door Switch Dryer         | 1 Pcs |         |



**Lower session****ASKO, T781 US - White #10778110 (TD44US)**

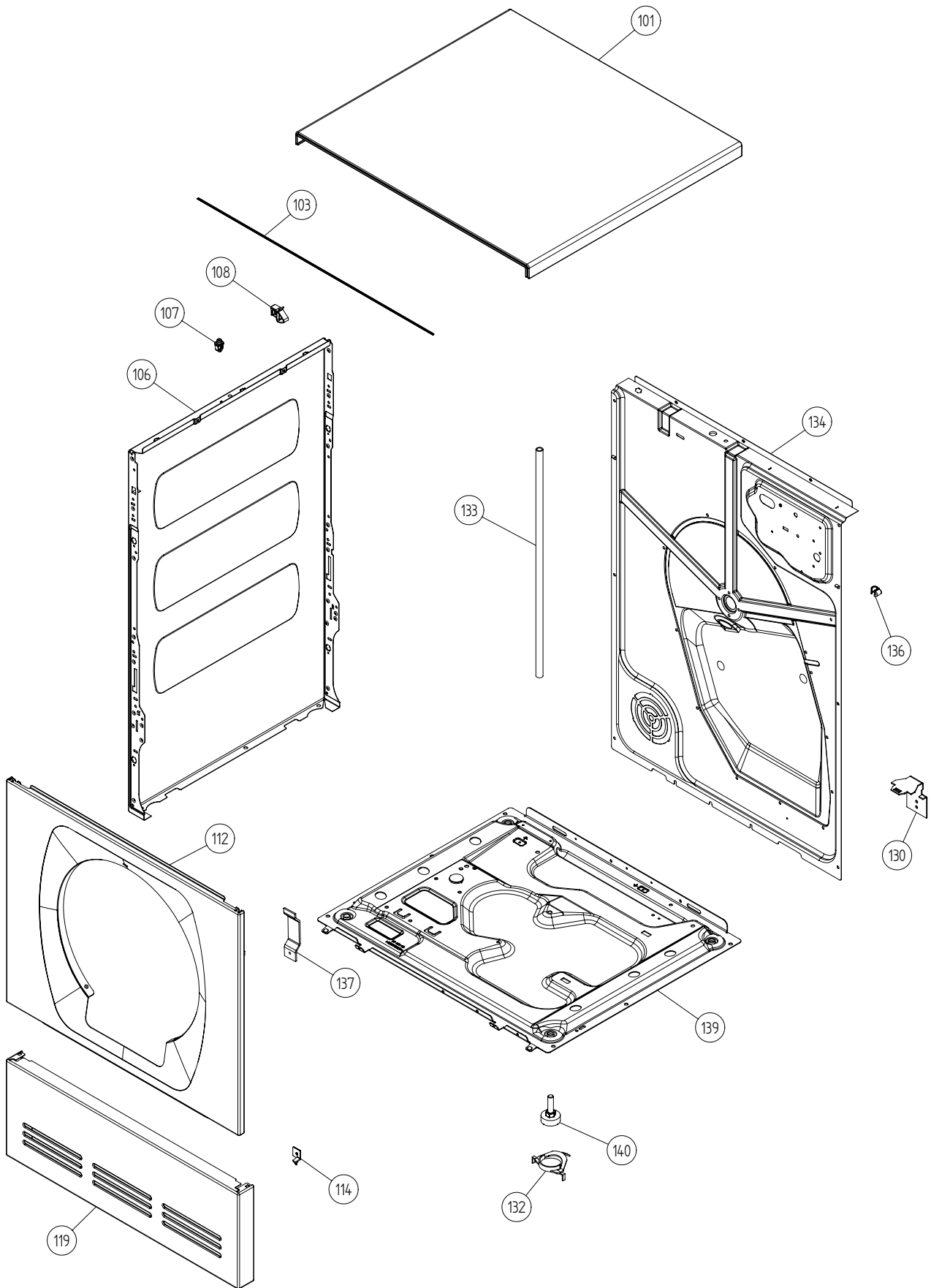
| <b>Pos</b> | <b>Spare part No.</b> | <b>Description</b>            | <b>Qty</b> | <b>Comment</b> |
|------------|-----------------------|-------------------------------|------------|----------------|
| 201        | 8061940               | Air Canal                     | 1 Pcs      |                |
| 202        | 8052637               | ExFan Inlet                   | 1 Pcs      |                |
| 203        | 8061960               | Fan Impeller 700 Series       | 1 Pcs      |                |
| 205        | 8052636               | ExFan Motor                   | 1 Pcs      |                |
| 206        | 8061895               | Motor Dryer 700s              | 1 Pcs      |                |
| 206-a      | 8901969               | Screw                         | 4 Pcs      |                |
| 206-b      | 8054268               | Capacitor Dryer Motor 02/05   | 1 Pcs      |                |
| 208        | 8055200               | Blower Dryer Front All        | 1 Pcs      |                |
| 208-a      | 8901192               | Locking Nut WM 03/05          | 1 Pcs      |                |
| 210        | 8058671               | AIR HOSE                      | 1 Pcs      |                |
| 211        | 8052574               | Condenser House UP            | 1 Pcs      |                |
| 211-a      | 8902087               | Screw Plastic Housing 20 Torx | 7 Pcs      |                |
| 212        | 8052575               | Condenser House Lower         | 1 Pcs      |                |
| 212-a      | 8902087               | Screw Plastic Housing 20 Torx | 3 Pcs      |                |
| 214        | 8052644               | Seal Cond Door                | 1 Pcs      |                |
| 215        | 8053112               | Cover Cond. House             | 1 Pcs      |                |
| 216        | 8052606               | LOCK HOOK                     | 2 Pcs      |                |
| 217        | 8052605               | LOCK KNOB                     | 2 Pcs      |                |
| 217-a      | 8902099               | Screw                         | 2 Pcs      |                |
| 219        | 8063752               | CONDENSER SET COMPLETE        | 1 Pcs      |                |
| 220        | 8801214               | TENSION ARM W.BALL BEARING    | 1 Pc's     |                |
| 221        | 8801194               | Drain Pump Condenser 03/05 TD | 1 Pcs      |                |
| 221-a      | 8902087               | Screw Plastic Housing 20 Torx | 3 Pcs      |                |
| 223        | 8053056               | Float Condenser Dryers        | 1 Pcs      |                |
| 224        | 8053098               | Float Pin                     | 1 Pcs      |                |
| 225        | 8052643               | MICROSWITCH Overflow TD       | 1 Pcs      |                |
| 227        | 8059711               | Sponge Rubber Strip           | 1 Pcs      |                |
| 230        | 8061855               | Humidity Sensor 760780        | 1 Pcs      |                |
| 230-a      | 8902042               | Screw Protective Cover Dryer  | 2 Pcs      |                |
| 231        | 8050091               | Cover Plate                   | 1 Pcs      |                |
| 231-a      | 8900369               | Screw T25                     | 1 Pcs      |                |
| 232        | 8061944               | Guard Hum. Sensor             | 1 Pcs      |                |
| 234        | 8061959               | Plug Hum. Sensor              | 2 Pcs      |                |
| 235        | 8061899               | Fan Casing Lid T700           | 1 Pcs      |                |
| 235        | 8076330-0             | FAN CASING LID UL4            | 1 Pcs      |                |
| 235-a      | 8902042               | Screw Protective Cover Dryer  | 2 Pcs      |                |
| 237        | 8061900               | Thermistor 760780             | 1 Pcs      |                |
| 238        | 8053050               | GROMMET                       | 1 Pcs      |                |
| 239        | 8076948               | PROTECTION FAN HOUSE ASM      | 1 Pc's     |                |
| 239-a      | 8902042               | Screw Protective Cover Dryer  | 1 Pcs      |                |
| 242        | 8064184               | SEALING COVER FAN HOUSE       | 1 Pcs      |                |
| 243        | 8063897               | SEALING HUMIDITY SENSOR       | 1 Pcs      |                |
| 244        | 8063905               | SEALING STRIP CONDENSER SET   | 2 Pcs      |                |
| 245        | 8061943               | Guard for Humidity sen.       | 1 Pcs      |                |
| 246        | 8058323               | SHAFT SEAL DRYER              | 1 Pcs      |                |



## Cylinder and related parts

ASKO, T781 US - White #10778110 (TD44US)

| Pos   | Spare part No. | Description                  | Qty    | Comment |
|-------|----------------|------------------------------|--------|---------|
| 301   | 8801216        | Front frame compl. TD21      | 1 Pcs  |         |
| 301-a | 8902066        | Screw                        | 4 Pcs  |         |
| 303   | 8061821        | Front Felt Seal T700         | 1 Pcs  |         |
| 304   | 8061932-49     | Lamp housing lid grey TD21   | 1 Pcs  |         |
| 306   | 8061887        | Lamp Chimney                 | 1 Pcs  |         |
| 308   | 8053107        | Micro Switch Dryer 03/05     | 1 Pcs  |         |
| 309   | 8052622        | Drum Roller Frt. TD          | 1 Pcs  |         |
| 311   | 8052589        | Paddle                       | 2 Pcs  |         |
| 311-a | 8902099        | Screw                        | 5 Pcs  |         |
| 313   | 8065710        | Belt 700s                    | 1 Pcs  |         |
| 314   | 8052632        | Bushing Rear Drum 03/05 TD   | 1 Pcs  |         |
| 315   | 8061851        | Rear Panel Inner T700        | 1 Pcs  |         |
| 315-a | 8900369        | Screw T25                    | 13 Pcs |         |
| 316   | 8055054        | Real Seal Clamp              | 1 Pcs  |         |
| 317   | 8052649        | Felt Strip Rear              | 1 Pcs  |         |
| 317   | 8064440        | Felt sealing rear            | 1 Pcs  |         |
| 318   | 8061800        | Cylinder Dryer TD20 Comp.    | 1 Pcs  |         |
| 319   | 8059712        | Rubber Strip                 | 1 Pcs  |         |
| 320   | 8004439        | Bearing Dryer Rear Panel All | 1 Pcs  |         |
| 321   | 8061828        | HEATING ELEMENT 2850W TD20   | 1 Pcs  |         |
| 321   | 8063808        | Heater Element 2500 W700s    | 1 Pcs  |         |
| 321-a | 8900369        | Screw T25                    | 2 Pcs  |         |
| 323   | 8064905        | Atuo Reset TStat 175C / TDC  | 1 Pcs  |         |
| 323   | 8008487        | TStat Man. Reset TD          | 1 Pcs  |         |
| 323-a | 8900369        | Screw T25                    | 1 Pcs  |         |
| 331   | 8052650        | Diaphragm Overheat           | 1 Pcs  |         |
| 332   | 8064151        | CAP OF BOLT                  | 1 Pcs  |         |



## Outer casing

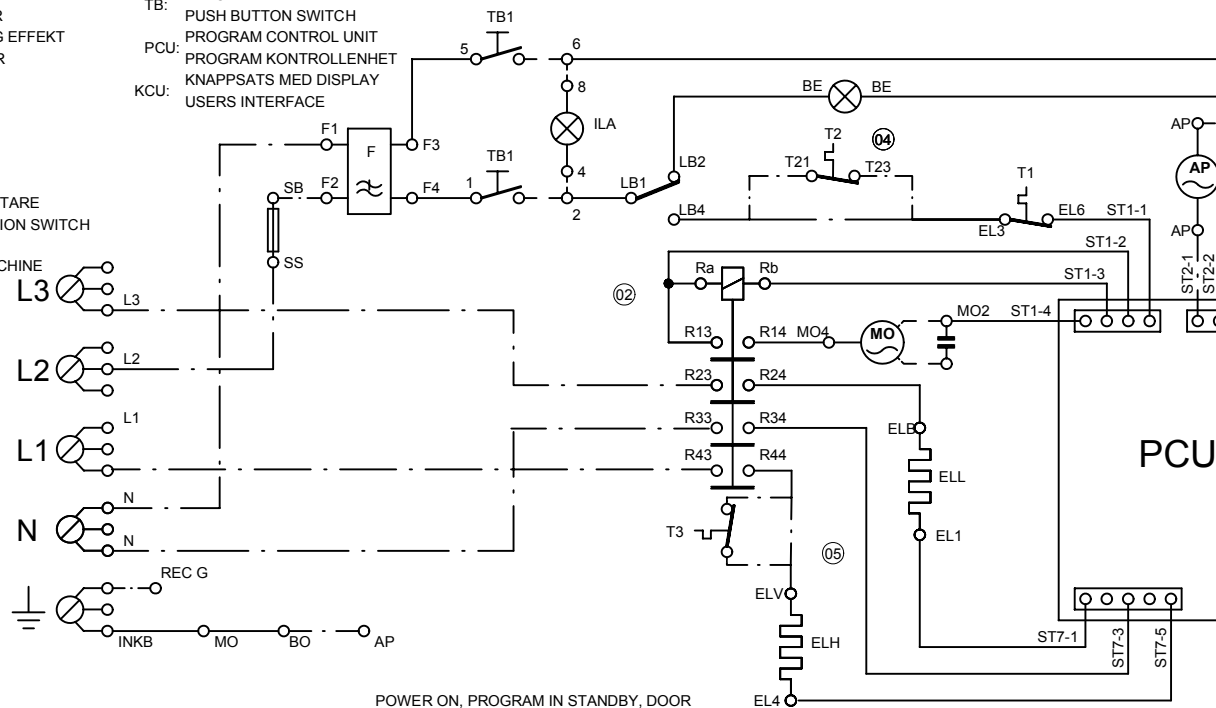
ASKO, T781 US - White #10778110 (TD44US)

| Pos   | Spare part No. | Description                  | Qty    | Comment |
|-------|----------------|------------------------------|--------|---------|
| 101   | 8061817-0      | Top White W600s T700s        | 1 Pcs  |         |
| 101-a | 8900338        | Screw 20 Torx Self Tapping   | 3 Pcs  |         |
| 101-b | 8901413        | Lock Washer laundry tops     | 2 Pcs  |         |
| 103   | 8064062        | Top Cover Strip              | 1 Pcs  |         |
| 106   | 8801174-0      | Side Panel Washer 600s       | 1 Pcs  |         |
| 107   | 8061763        | Clip Front Plate 600700s     | 2 Pcs  |         |
| 108   | 8061916        | CABLE HOLDER WMD20           | 2 Pcs  |         |
| 112   | 8061847-0      | Front Plate 700 Series       | 1 Pcs  |         |
| 112-a | 8900338        | Screw 20 Torx Self Tapping   | 2 Pcs  |         |
| 112-b | 8901413        | Lock Washer laundry tops     | 2 Pcs  |         |
| 114   | 8064177        | Hook Lower Pane              | 2 Pcs  |         |
| 114-a | 8900338        | Screw 20 Torx Self Tapping   | 2 Pcs  |         |
| 119   | 8801247-0      | Lower Cover w/Holes          | 1 Pcs  |         |
| 130   | 8053980        | STACKING Bracket ALL TDs Mus | 2 Pcs  |         |
| 132   | 8064114        | Holder Dryer Feet Stacking   | 1 Pcs  |         |
| 133   | 8054733        | Rubber Hose Accy Drain Cond. | 1 Pcs  |         |
| 134   | 8061829        | Rear Panel Outer T700        | 1 Pcs  |         |
| 134-a | 8900338        | Screw 20 Torx Self Tapping   | 10 Pcs |         |
| 136   | 8061915        | Cable Holder T700            | 1 Pcs  |         |
| 139   | 8061618        | BASE PAN WMD20               | 1 Pcs  |         |
| 140   | 8059334        | Leveling Leg Comp. WMD 20    | 4 Pcs  |         |

S:\UW\md2011\_Tryckunderlag\Kopplingschema\061866 TD33\_44\_TDC33\_44\061866-06jskickad.dft , pesv , 2003-01-21 09:16:08

- ELL: VÄRMEELEMENT, LÅG EFFEKT  
HEATER, LOW POWER
- ELH: VÄRMEELEMENT, HÖG EFFEKT  
HEATER, HIGH POWER
- T1: THERMOSTAT
- T2: THERMOSTAT
- T3: THERMOSTAT
- OF: ÖVERSVÄMMNINGSBRYTARE  
OVERFLOW PROTECTION SWITCH
- REC: UTTAG TVÄTTMASKIN  
OUTLET WASHING-MACHINE
- BO: BOTTEN
- ILA: INDIKERINGSLAMPA  
INDCATION LAMP
- R: RELÄ
- S: SÄKRING  
FUSE
- F: FILTER
- AP: AVLOPPSPUMP  
DRAIN PUMP
- MO: MOTOR
- TH: THERMISTOR
- BE: BELYSNING  
ILLUMINATION
- LB: LUCKBRYTARE  
DOOR SWITCH
- INKB: MAIN TERMINAL BLOCK  
INKOPPLINGSPLINT

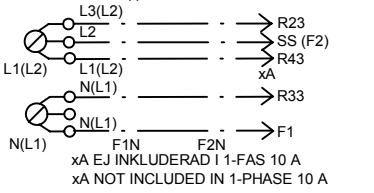
- TB: TRYCKBRYTARE  
PUSH BUTTON SWITCH
- PCU: PROGRAM CONTROL UNIT  
PROGRAM KONTROLLENHET
- KCU: KNAPPSATS MED DISPLAY  
USERS INTERFACE



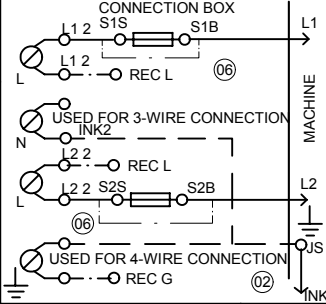
- POWER ON, PROGRAM IN STANDBY, DOOR CLOSED
- ST1-1 - ST11-1 230 Vac
  - ST2-1 - ST2-2 0 Vac (TD44)
  - ST3-1 - ST3-2 0 V (TD44) CLOSED SWITCH
  - ST3-1 - ST3-2 13 Vdc (TD44) OPEN SWITCH
  - ST5-1 - ST5-4 15 Vdc
  - ST5-2 - ST5-3 1-15 mVdc DEPENDING ON THE HUMIDITY
  - ST6-1 - ST6-2 5 Vdc THERMISTOR DISCONNECTED
  - ST7-1 - ST7-3 0 V
  - ST7-5 - ST7-3 0 v
  - ST8-1 - ST8-2 13 Vdc
  - ST8-3 DATA IN
  - ST8-4 CLOCK
  - ST8-5 DATA OUT

- PROGRAM RUNNING,
- ST1-1 - ST11-1 230 Vac
  - ST1-1 - ST1-3 230 Vac
  - ST1-1 - ST1-4 230 Vac
  - ST2-1 - ST2-2 230 Vac (TD44) 30 SECONDS
  - ST3-1 - ST3-2 0 V (TD44) CLOSED SWITCH
  - ST3-1 - ST3-2 13 Vdc (TD44) OPEN SWITCH
  - ST5-1 - ST5-4 15 Vdc
  - ST5-2 - ST5-3 1-15 mVdc DEPENDING ON
  - ST6-1 - ST6-2 5 VdcV THERMISTOR
  - ST7-1 - R24 230 Vac HEATER ON
  - ST7-5 - R44 230 Vac HEATER ON
  - ST8-1 - ST8-2 13 Vdc
  - ST8-3 DATA IN
  - ST8-4 CLOCK
  - ST8-5 DATA OUT

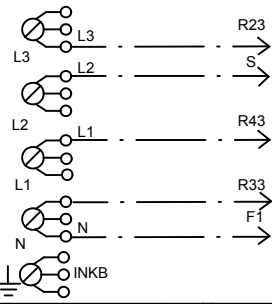
KOPPLING 1-FAS / WIRING 1-PHASE  
NUMMER INOM ( ) GÄLLER FÖR USA & CANADA  
NUMBERS IN ( ) VALID FOR USA & CANADA



FUSE CONNECTION FOR USA & CANADA



KOPPLING 3-FAS / WIRING 3-PHASE



| Rev ind | Revision  | Appd | Year | Week |
|---------|---|------|------|------|
| 06      | Added alt. solution without fuses<br>Removed wiring without Neutral | PS   | 05   | 03   |
| 05      | Additional thermostat added   | PS   | 03   | 03   |
| 04      | Additional thermostat added   | SS   | 01   | 27   |
| 03      | TD44A/TD40 was TD44, TD33/44  | MS   | 01   | 22   |
| 02      | Wiring Japan added, JS added, MO4 changed                           | PS   | 99   | 26   |
| 01      | ST2-1 - ST2-2 was 230   | HT   | 99   | 02   |

| Pos.        | Qty | Part No. | Name of item           | Dens./Kg |
|-------------|-----|----------|------------------------|----------|
| Material    |     |          |                        |          |
| Scale       |     |          | Gen.tolerance          |          |
| Designed by |     |          | Gen.tol.Angle          |          |
| Released by |     |          | Iss by Dept   Year   W |          |
|             |     |          | UT 98 0                |          |

**ASKO CYLINDA**

This document must not be copied without our written permission, and the contents thereof must not be imparted to a third party without the use of any unauthorized purpose. Askö Cylinda AB