

This Owner's Manual is provided and hosted by [Appliance Factory Parts](#).



Shop Vac 87MT650C Owner's Manual

[Shop genuine replacement parts for Shop Vac
87MT650C](#)



[Find Your Shop Vac Vacuum Cleaner Parts - Select From 498 Models](#)

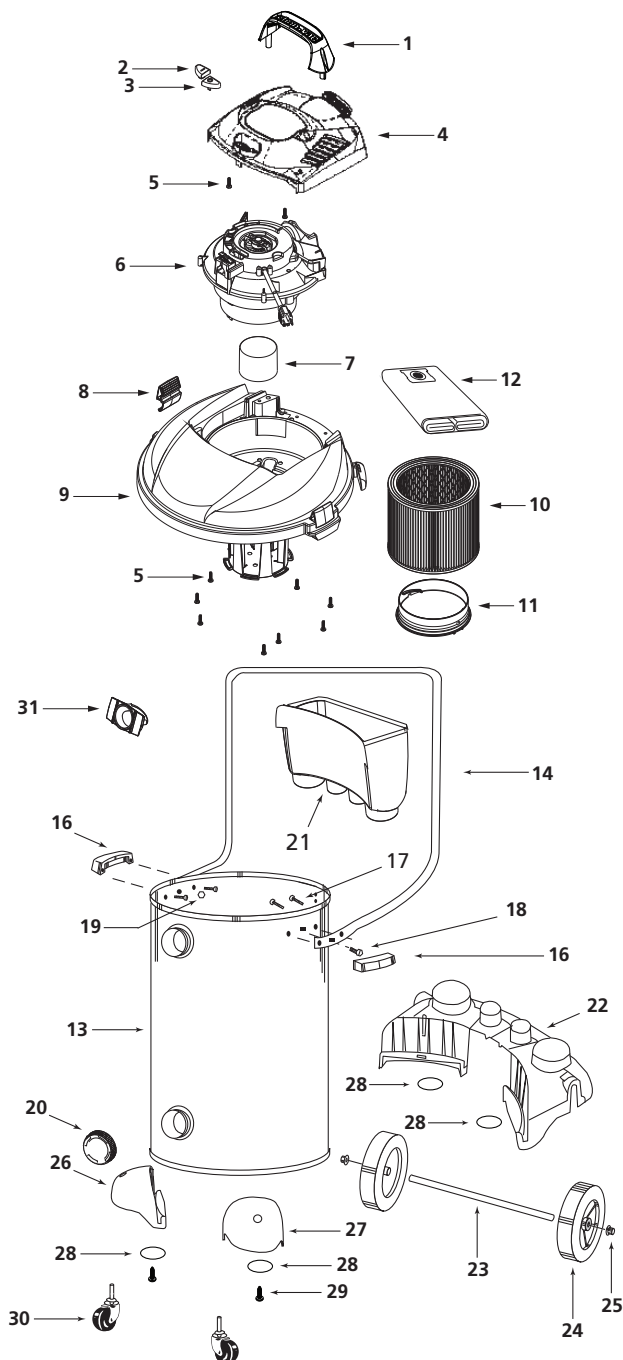
----- Manual continues below part list -----

Available Replacement Parts for Shop Vac 87MT650C

6774200	Caster, each [READ ADD'L INFO]
3008000	FILTER RETAINER
4300299	Cap Nut.
90672	Shop type filter bags 2-pack
2425010	Wheel.
7413120	INLET DEFLECTOR
9355596	Handle and hardware package.
1503999	screw
3545000	Cup Float.
1517699	Screw.
7444500	Lid Latch.
7414210	OFF SWITCH COVER ONLY, NOT THE ACTUAL SW
7414200	ON SWITCH COVER ONLY, NOT THE ACTUAL SWI
7446800	Drain cap
9355196	HANDLE, SET BLACK (2 Handles in pack)
8136197	MOTOR
3487500	Rear Wheel Dolly
8568101	Casterfoot A
8568111	Casterfoot B

87MT Series

Model 87MT650C



ITEM	DESCRIPTION	PART NO.
1	Handle	3756000
2	Switch Button - I	7414200
3	Switch Button - O	7414210
4	Motor Cover Assembly	3748827
5	Screw 10 x 3/4" Trilobe, Twin Lead	1517699
6	Power Unit Assembly	8136197
7	Float	3545000
8	Lid Latch	7444500
9	Lid Cage and Latch Assembly	1945056
10	Cartridge Filter	90350
11	Filter Retainer	3008000
12	Disposable Filter Bag	90672
13	Tank Assembly	5121597
14	Carriage Handle	2088220
15	Handle & Hardware Package (Includes 16-19)	9355596
16	Side Tank Handle	9355100
17	#10 x 3/4" Screw Hex Head	1503999
18	Bolt 1/4" - 20 x 1/2"	6401299
19	1/4" - Hex Nut	1300199
20	Drain Cap	7446800
21	Accessory Basket	7415111
22	Rear Wheel Dolly	3487500
23	Axle	2442400
24	8" Wheel	2425010
25	Cap Nut	4300299
26	Casterfoot A	8568101
27	Casterfoot B	8568111
28	Washer	2781018
29	Screw #10 x 1" SL Hex Head	1509699
30	Caster	6772200
31	Inlet Deflector	7413120

* Replacement parts may differ from original equipment.