

This Owner's Manual is provided and hosted by [Appliance Factory Parts](#).



Shop Vac SM12-300A Owner's Manual

[Shop genuine replacement parts for Shop Vac
SM12-300A](#)



[Find Your Shop Vac Vacuum Cleaner Parts - Select From 498 Models](#)

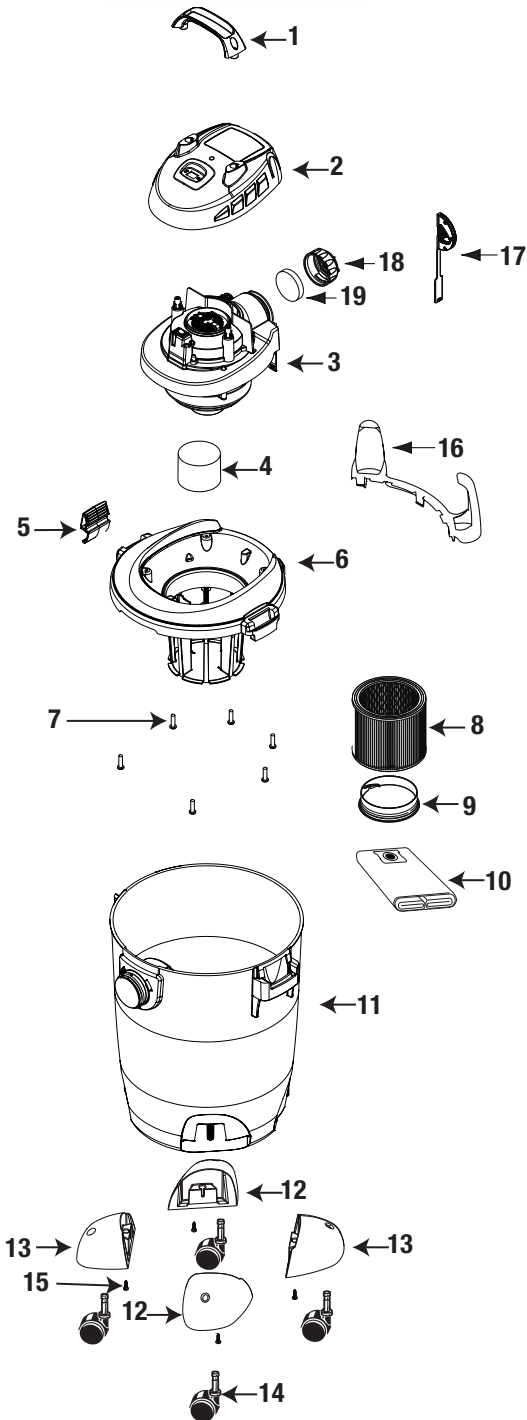
----- Manual continues below part list -----

Available Replacement Parts for Shop Vac SM12-300A

9030433	FILTER CARTRIDGE FOR VACUUM
9066133	VACUUM OEM SHOP VAC 5 GALLON
6774200	Caster, each [READ ADD'L INFO]
3008000	FILTER RETAINER
1503999	screw
3545000	Cup Float.
1517699	Screw.
7444500	Lid Latch.
7433100	Caster foot A
7433110	Caster foot B
1290530	Foam-Diffuser
3756151	Handle

SM12 Series

Model SM12-300A



ITEM	DESCRIPTION	PART NO.
1	Handle	3756151
2	Motor Cover	2433350
3	Power Unit Assembly	8300397
4	Float	3545000
5	Lid Latch	7444500
6	Lid Cage and Latch Assembly	1945337
7	Screw 10 x 3/4" Trilobe, Twin Lead	1517699
8	Cartridge Filter	90304
9	Filter Retainer	3008000
10	Disposable Filter Bag	90661
11	Tank Assembly	1944701
12	Caster Foot A	7433100
13	Caster Foot B	7433110
14	Caster	6774200
15	Screw 10 x 3/4" SL Hex Head	1503999
16	Hose/Tool Holder	3857810
17	Airflow Indicator	7419596
18	Blower Port Diffuser Cap	7419007
19	Diffuser Foam	1290530

* Replacement parts may differ from original equipment.