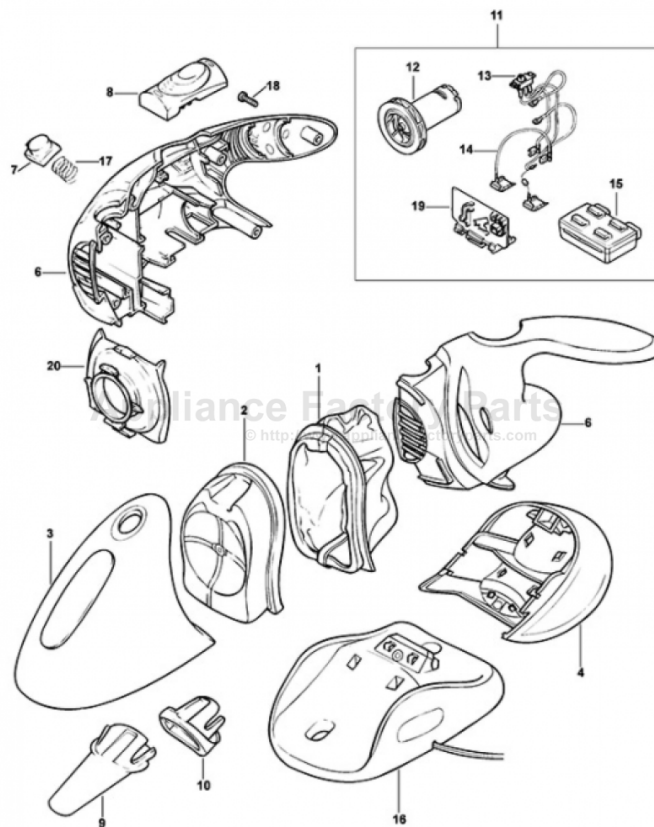


This Owner's Manual is provided and hosted by [Appliance Factory Parts](http://ApplianceFactoryParts.com).



Black & Decker V3600 Owner's Manual

[Shop genuine replacement parts for Black & Decker V3600](#)



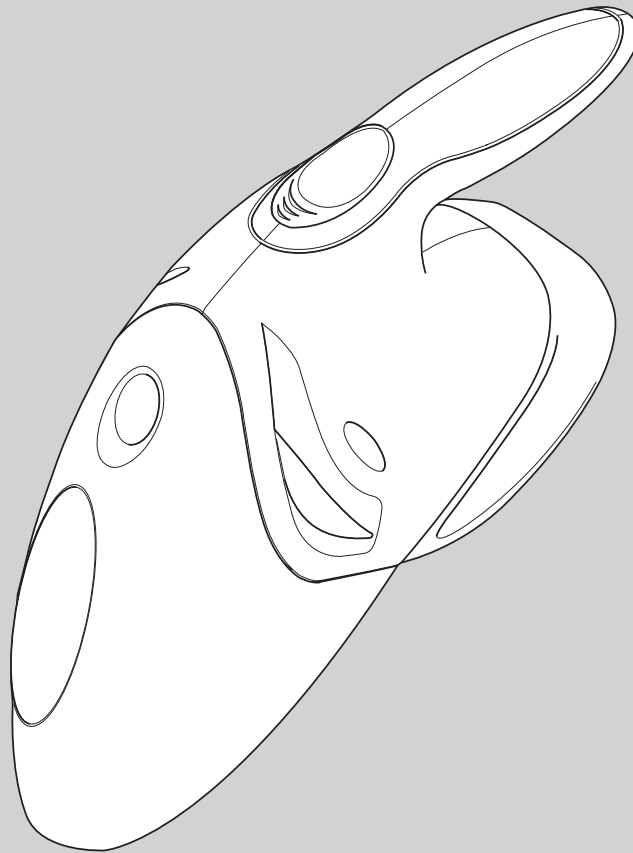
[Find Your Black & Decker Vacuum Cleaner Parts - Select From 339 Models](#)

----- Manual continues below -----



 **BLACK &
DECKER®**

www.blackanddecker.com

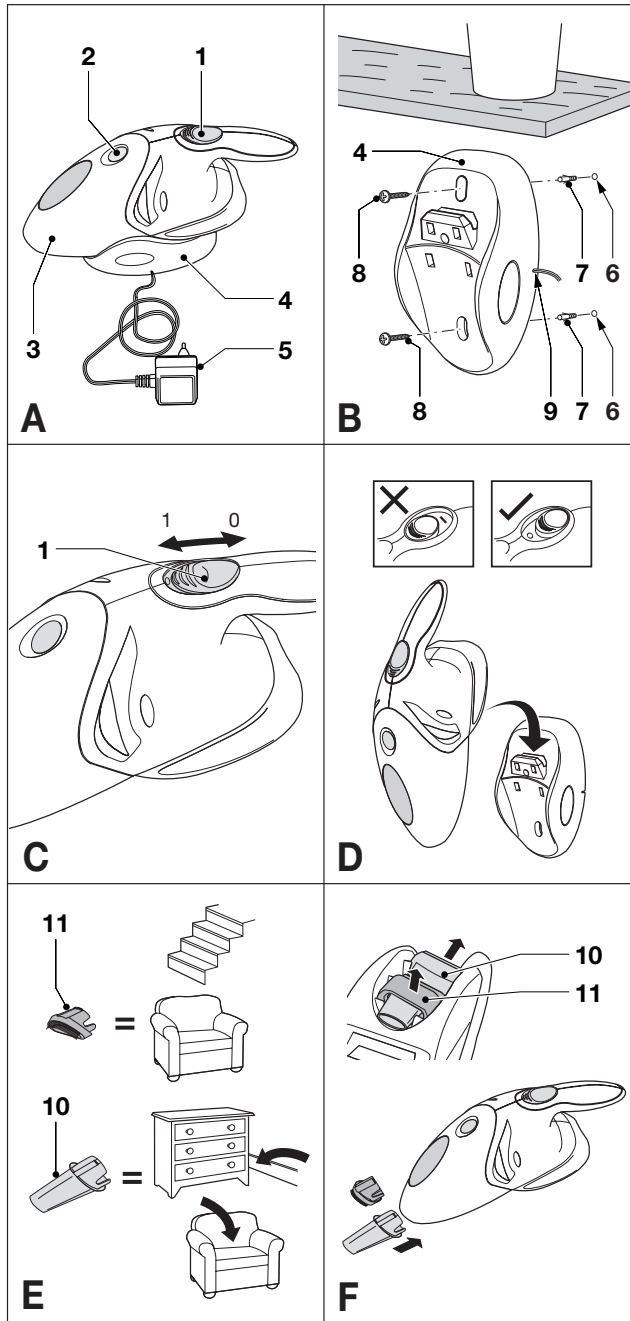


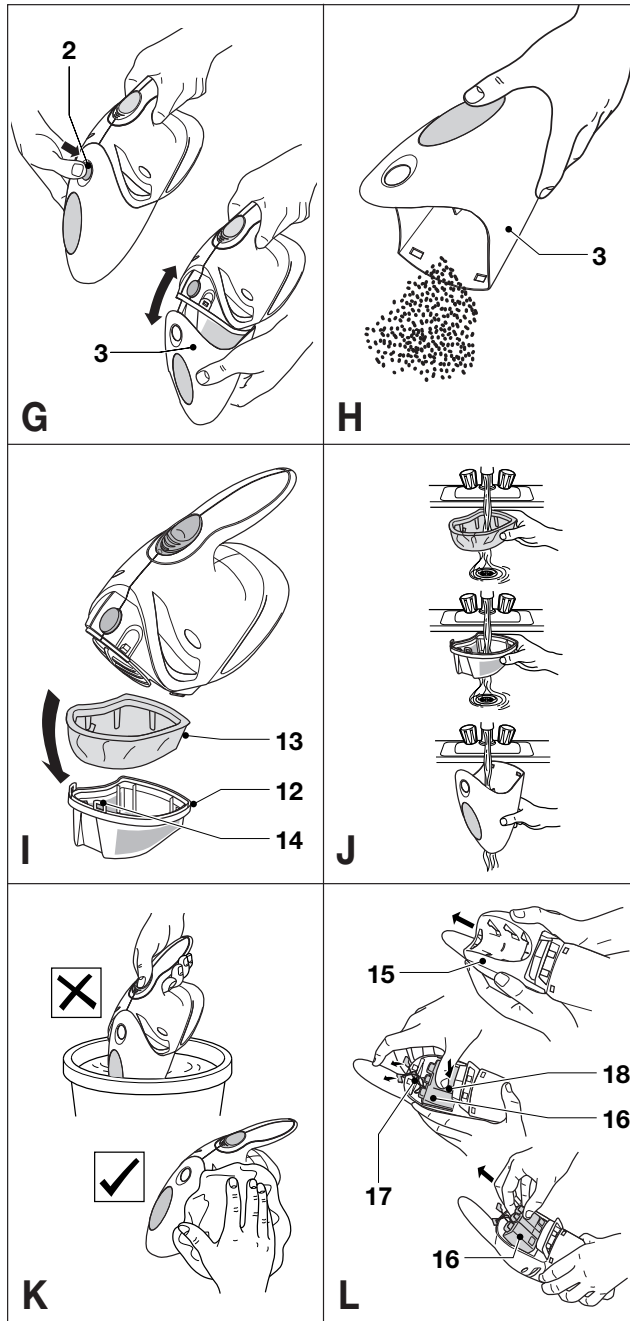
Dustbuster®



Copyright Black & Decker







4



ENGLISH

Dustbuster® V2400/V2410/ V2410G/V3600/V3610/V3610P

Thank you for choosing Black & Decker. We hope that you will enjoy using this product for many years.

OVERVIEW (fig. A)

1. On/off switch
2. Release button
3. Dust bowl
4. Charging base
5. Charger

EC DECLARATION OF CONFORMITY

V2400/V2410/V2410G/V3600/ V3610/V3610P

Black & Decker declares that these products conform to: 98/37/EC, 89/336/EEC, 73/23/EEC, EN 55014, EN60335, EN 61000

L_{pA} (sound pressure)	dB(A)	< 70
Hand/arm weighted vibration value	m/s ²	< 2.5


Colin Wills
Director of Engineering
BDCl, 4/F, 2 Dai Wang Street
Tai Po Industrial Estate
Tai Po NT, Hong Kong

INTENDED USE

Your Black & Decker Dustbuster® hand held vacuum cleaner has been designed for light dry vacuum cleaning purposes. This product is intended for household use only.

WARNING SYMBOLS

The following symbols are used in this manual:

 Denotes risk of personal injury, loss of life or damage to the product in case of non-observance of the instructions in this manual.

SAFETY INSTRUCTIONS

- ◆ **Warning!** When using battery-powered appliances, basic safety precautions, including the following, should always be followed to reduce the risk of fire, leaking batteries, personal injury and material damage.
- ◆ Read all of this manual carefully before using the appliance.
- ◆ The intended use is described in this manual. The use of any accessory or attachment or the performance of any operation with this appliance other than those recommended in this instruction manual may present a risk of personal injury.
- ◆ Retain this manual for future reference.

Using your appliance

- ◆ Do not use the appliance to pick up liquids.
- ◆ Do not use the appliance to pick up any materials that could catch fire.
- ◆ Do not use the appliance near water. Do not immerse the appliance in water.
- ◆ Keep the motor draught away from your eyes and face.
- ◆ Keep children and animals at a safe distance when using this appliance.



ENGLISH

- ◆ Never pull the charger lead to disconnect the charger from the socket. Keep the charger lead away from heat, oil and sharp edges.

After use

- ◆ Unplug the charger before cleaning the charger or charging base.
- ◆ When not in use, the appliance should be stored in a dry place. Children should not have access to stored appliances.

Inspection and repairs

- ◆ Before use, check the appliance for damaged or defective parts. Check for breakage of parts, damage to switches and any other conditions that may affect its operation.
- ◆ Do not use the appliance if any part is damaged or defective.
- ◆ Have any damaged or defective parts repaired or replaced by an authorised repair agent.
- ◆ Regularly check the charger lead for damage. Replace the charger if the lead is damaged or defective.
- ◆ Never attempt to remove or replace any parts other than those specified in this manual.

Battery


- ◆ Never attempt to open the battery for any reason.
- ◆ Do not expose the battery to water.
- ◆ Do not incinerate the battery.
- ◆ When disposing of batteries, follow the instructions given in the section "Protecting the Environment".


Charger

- ◆ Do not expose the charger to water.
- ◆ Do not open the charger.

ELECTRICAL SAFETY

Your charger has been designed for a specific mains voltage. Always check that the mains voltage corresponds to the voltage on the rating plate.

 Your charger is double insulated in accordance with EN 60335; therefore no earth wire is required.

 Never attempt to replace the charger unit with a regular mains plug.

INSTALLATION

Fitting the charging base to the wall (fig. B)

The charging base can be fitted to the wall to provide a convenient storage and charging point for the appliance.

- ◆ Find a suitable indoor location near a mains outlet.
- ◆ Position the charging base as shown and mark the location of the mounting holes (6) on the wall.
- ◆ Drill a hole (ø 6 mm, approx. 35 mm deep) at each of the marked locations.
- ◆ Insert the wall plugs (7) provided into the holes.
- ◆ Fit the charging base to the wall using the screws (8) provided. Make sure to guide the charger lead through the slot (9). Excess lead can be stored at the rear of the charging base.



ENGLISH

BEFORE FIRST USE

Before first use, the battery must be charged for at least 16 hours.

- ◆ Before charging, preferably discharge the battery by operating the appliance until the motor stops.
- ◆ Charge the battery as described below.

USE

Operating the appliance (fig. C)


- ◆ To switch on, slide the on/off switch (1) forward.
- ◆ To switch off, slide the on/off switch back.

Charging the battery (fig. D)

- ◆ Make sure that the appliance is switched off. **The battery will not be charged with the on/off switch in the on position.**
- ◆ Place the appliance on the charging base as shown.
- ◆ Plug in the charger. Switch on at the mains.
- ◆ **Leave the appliance to charge for at least 16 hours.**

Whilst charging, the charger may become warm. This is normal and does not indicate a problem. The appliance can be left connected to the charger indefinitely. When the battery is fully charged, the power consumption of the charger is negligible.

Important! Place the appliance on the charging base whenever it is not in use. After fully charging the battery, the average effective usage time is approx. 7 to 9 minutes. It may take several charging cycles before the battery attains full capacity.

 Do not charge the battery at ambient temperatures below 4 °C or above 40 °C.

Accessories - V2410/V2410G/V3610/V3610P (fig. E & F)

These models are supplied with the following accessories (fig. E):

- a crevice tool (10) for confined spaces
- a hard brush (11) for furniture and stairs

To fit an accessory, proceed as follows (fig. F):

- ◆ Take the accessories from the appliance.
- ◆ Insert the appropriate accessory into the front of the appliance.

You may refit the other accessory by clicking it into the accessory holder.

To refit both accessories:

- ◆ Insert the brush into accessory holder.
- ◆ Slide the crevice tool into the brush.
- ◆ Push the accessories down until they click into place.

TROUBLESHOOTING

If the product does not work, follow the instructions below. If this does not solve the problem, please contact your local Black & Decker repair agent.

- ◆ Make sure the battery is fully charged.
- ◆ If the battery cannot be charged, check if the charger is plugged in correctly and the mains is working. Make sure the on/off switch is in the off position.

CLEANING AND MAINTENANCE

 Regularly clean the filters.



ENGLISH

Cleaning the dust bowl and filters (fig. G, H, I & J)

The filters are re-usable and should be cleaned regularly.

- ◆ Press the release button (2) and remove the dust bowl (3).
- ◆ Delatch the clips (14) and remove the filters (12 & 13) (fig. I).
- ◆ Remove any dust from the dust bowl and wash the bowl if necessary.
- ◆ Brush any loose dust off the filters.
- ◆ Wash the filters in warm, soapy water.
- ◆ Make sure the dust bowl and filters are dry.
- ◆ Place the soft filter into the hard filter.
- ◆ Hook the filter assembly onto the appliance and lock it in place using the clips (14).
- ◆ Refit the dust bowl onto the appliance. Make sure the dust bowl clicks into place.

Important! Optimum dust collection will only be achieved with clean filters and an empty dust bowl. If dust begins to fall back out of the appliance after switching it off, this indicates that the dust bowl is full and must be emptied.



- ◆ Never use the appliance without the filters.
- ◆ Do not immerse the appliance in water (fig. K).

Replacing the filters (fig. G & I)

The filters should be replaced every 6 to 9 months and whenever worn or damaged. Replacement filters are available from your Black & Decker dealer (cat. no. VF10).

- ◆ Press the release button (2) and remove the dust bowl (3) (fig. G).

- ◆ Delatch the clips (14) and remove the filters (12 & 13) (fig. I).
- ◆ Take the new filters and place the soft filter into the hard filter.
- ◆ Hook the filter assembly onto the appliance and lock it in place using the clips (14).
- ◆ Refit the dust bowl onto the appliance. Make sure the dust bowl clicks into position.

PROTECTING THE ENVIRONMENT



Should you find one day that your Black & Decker product needs replacement, or if it is of no further use to you, think of the protection of the environment. Black & Decker repair agents will accept old Black & Decker products and ensure that they are disposed of in an environmentally safe way.

Battery (fig. L)




If you want to dispose of the product yourself, the battery must be removed as described below and disposed of in accordance with local regulations. Do not short-circuit the battery terminals.

- ◆ Preferably discharge the battery by operating the appliance until the motor stops.
- ◆ Hold the accessory holder (15) as shown and push it off the appliance.
- ◆ Disconnect the wires (17) from the battery (16).



ENGLISH

- ◆ Push the clip (18) down, slide the battery back and pull it out.
- ◆ Place the battery in suitable packaging to ensure that the terminals cannot be short-circuited.
- ◆ Take the battery to your service agent or a local recycling station. Collected batteries will be recycled or disposed of properly.

 Once removed, the battery cannot be refitted.

GUARANTEE

Should your Black & Decker product become defective due to faulty materials or workmanship, within 24 months from the date of purchase, we guarantee to either replace all defective parts or -at our discretion- to replace the unit free of charge, provided that:

- ◆ The product is returned to us or one of our authorised repair agents with proof of purchase.
- ◆ The product has not been used for trade, professional or hire purposes.
- ◆ The product has not been subjected to misuse or neglect.
- ◆ The product has not sustained any damage through foreign objects, substances or accidents.
- ◆ Repairs have not been attempted by anyone other than our service staff or authorised repair agents.

This guarantee is offered as an extra benefit and does not affect your statutory rights.



Australia	DeWALT Industrial Power Tool Company 7 Clarice Road, Box Hill, Victoria 3128	Tel. 03 9895 9200 Fax 03 9899 7465
New Zealand	Black & Decker 81 Hugo Johnson Drive Penrose, Auckland, New Zealand	Tel. 09 579 7600 Fax 09 579 8200
South Africa	Black & Decker South Africa (Pty) Ltd Physical address: 146 Lechwe Street, Corporate park Randjiesfontein, Midrand Postal address: Postnet Suite 107, Private Bag X65 Halfway House 1685	Tel. (011) 653-1400 Fax (011) 653-1499
United Kingdom	Black & Decker 210 Bath Road Slough, Berkshire SL1 3YD	Tel. 01753 511234 Fax 01753 551155 Helpline 01753 574277



575595-00





Date of purchase

Dealer address

.....

Was this tool bought as a replacement?

Yes
 No

Name:

Address:

Town:

Postal code:

Was this tool a gift?

Yes
 No

Was this tool your first purchase?

Yes
 No

Dealer address:

e-mail address:

Data protection act:
Tick the box if you prefer not to receive further information.





GUARANTEE CARD

.....
Please complete this section immediately after the purchase of your product and send it to Black & Decker in your country. If you live in Australia or New Zealand, please register by using the alternative guarantee card supplied.

575595-00