

This Owner's Manual is provided and hosted by [Appliance Factory Parts](#).



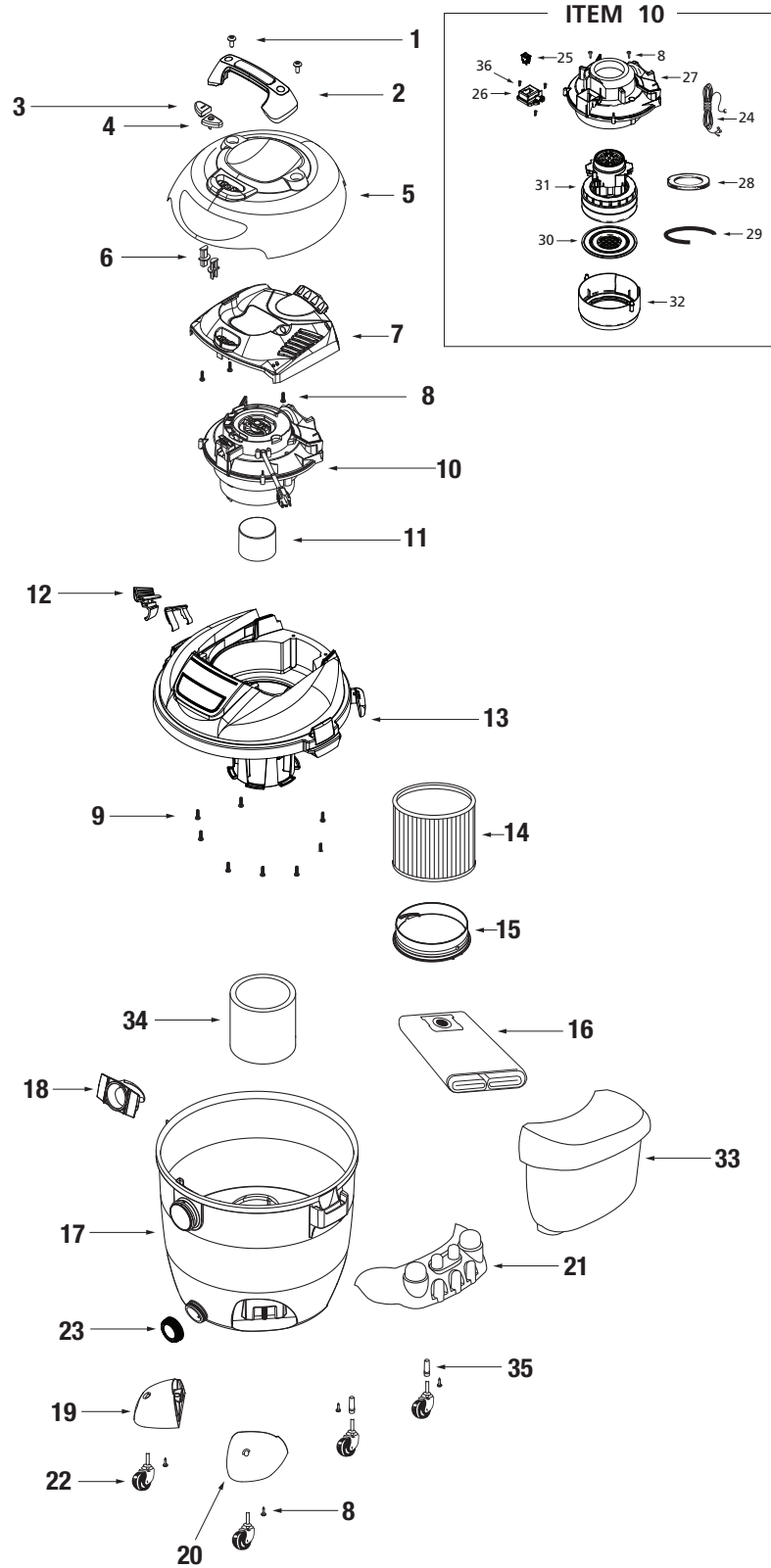
Shop Vac 92L2A300M Owner's Manual

[Shop genuine replacement parts for Shop Vac
92L2A300M](#)



[Find Your Shop Vac Vacuum Cleaner Parts - Select From 487 Models](#)

----- Manual continues below -----



ITEM	DESCRIPTION	PART NO.
1	Screw 1/4 x 1 1/2" Trilobe Ph Pan	1517499
2	Handle	1945314
3	Switch Button - (I)	7414200
4	Switch Button - (O)	7414210
5	Outer Motor Cover Assembly	1945318
6	Switch Button Extension	7414250
7	Motor Cover Assembly	1945317
8	#10 x 3/4" Screw Hex Head	1503999
9	Screw 10 x 3/4" Trilobe, Twin Lead	1517699
10	Power Unit Assembly (Includes 8, 24-32 & 36)	1945016
11	Float	3545000
12	Lid Latch	1945462
13	Lid Cage & Latch Assembly	1945579
14	Cartridge Filter	9039010
15	Filter Retainer	3008000
16	HE Filter Bag	90672
17	Tank Assembly	1027397
18	Inlet Deflector	7413120
19	Caster Foot A	8568000
20	Caster Foot B	8568010
21	Rear Caster Dolly	7431135
22	Caster	6772200
23	Drain Cover	7446800
24	Power Cord	4151400
25	Switch and Actuator	1944262
26	Switch Box	3090400
27	Motor Housing	1945321
28	Upper Motor Gasket	2070000
29	Lower Motor Gasket	2072002
30	Grid plate	8865705
31	Motor (Includes 28)	1944540
32	Diffuser	8867000
33	Accessory Basket	7415111
34	Foam Sleeve	90585
35	Retainer	8565500
36	Screw #10 x 1/2"	1507299

*Replacement parts may differ from original equipment.