

This Owner's Manual is provided and hosted by [Appliance Factory Parts](#).



# Shop Vac BLB450 Owner's Manual

[Shop genuine replacement parts for Shop Vac BLB450](#)



[Find Your Shop Vac Vacuum Cleaner Parts - Select From 487 Models](#)

----- Manual continues below -----

**shop·vac®**

**shop·vac®**  
BRAND

**CONSUMER SERIES**



## CONSUMER SERIES | CONTENTS

Page 3



Page 4-5



Page 6-7



Page 8



Page 9



Page 10



Page 11



Page 12



| CATALOG # | CAPACITY                      | PEAK HP† |
|-----------|-------------------------------|----------|
| 2030500   | 5 U.S. Gallons*, 18.9 Liters* | 2.25     |
| 5980600   | 6 U.S. Gallons*, 22.7 Liters* | 2.5      |

| CATALOG # | CAPACITY                       | PEAK HP† |
|-----------|--------------------------------|----------|
| 5980700   | 6 U.S. Gallons*, 22.7 Liters*  | 2.75     |
| 5980800   | 8 U.S. Gallons*, 30.3 Liters*  | 3.0      |
| 5981000   | 10 U.S. Gallons*, 37.8 Liters* | 3.5      |
| 5981200   | 12 U.S. Gallons*, 45.5 Liters* | 4.5      |

| CATALOG # | CAPACITY                       | PEAK HP† |
|-----------|--------------------------------|----------|
| 5983000   | 6 U.S. Gallons*, 22.7 Liters*  | 3.0      |
| 5983100   | 8 U.S. Gallons*, 30.3 Liters*  | 3.5      |
| 5983200   | 12 U.S. Gallons*, 45.5 Liters* | 5.0      |
| 5983300   | 16 U.S. Gallons*, 60.5 Liters* | 6.5      |
| 5983400   | 20 U.S. Gallons*, 75.7 Liters* | 6.5      |

| CATALOG # | CAPACITY                       | PEAK HP† |
|-----------|--------------------------------|----------|
| 9631200   | 12 U.S. Gallons*, 45.5 Liters* | 4.5      |

| CATALOG # | CAPACITY                       | PEAK HP† |
|-----------|--------------------------------|----------|
| 9603200   | 12 U.S. Gallons*, 45.5 Liters* | 5.0      |
| 9603600   | 16 U.S. Gallons*, 60.5 Liters* | 6.5      |

| CATALOG # | CAPACITY                        | PEAK HP† |
|-----------|---------------------------------|----------|
| 3940100   | 3.5 U.S. Gallons*, 13.2 Liters* | 3.0      |
| 2021000   | 1.0 U.S. Gallon*, 3.8 Liters*   | 1.0      |

| CATALOG # | CAPACITY                       | PEAK HP† |
|-----------|--------------------------------|----------|
| 2030100   | 1.5 U.S. Gallons*, 5.6 Liters* | 2.0      |
| 2036000   | 2.5 U.S. Gallons*, 9.4 Liters* | 2.5      |

| CATALOG # | CAPACITY | AMPS |
|-----------|----------|------|
| 4041200   | N/A      | 6.3  |



The economical choice to give you the power to take the work out of cleaning.



**2030500**  
**5 U.S. Gallons\*, 18.9 Liters\***  
**2.25 Peak HP†**

**2**

Both vacs backed by a two year warranty



**5980600**  
**6 U.S. Gallons\*, 22.7 Liters\***  
**2.5 Peak HP†**



Inlet accepts 1 1/4" and 2 1/2" diameter hoses



Powerful rear blower



Convenient on/off switch

### TYPICAL CHARACTERISTICS\*\*

|                                   |                               |
|-----------------------------------|-------------------------------|
| Catalog #                         | 2030500                       |
| Capacity                          | 5 U.S. Gallons*, 18.9 Liters* |
| Peak HP                           | 2.25†                         |
| UPC                               | 0 26282 20305 2               |
| Carton Dimensions                 | 13 3/4" x 13 3/4" x 17 1/2"   |
| Cube                              | 1.91                          |
| Shipping Weight                   | 12 lbs. (5.4 kg)              |
| Cubic Feet per Minute             | 100                           |
| Sealed Pressure (inches of water) | 50                            |
| Air Watts                         | 145                           |
| Electric Rating                   | 120V~ 60Hz 7.7A               |
| Cord                              | 6 ft. (1.8 m)                 |



Accessories: 7' (2.1 m) x 1 1/4" (3.2 cm) hose, (3) extension wands, 10" (25.4 cm) wet/dry nozzle, foam sleeve and reusable dry filter.

|                                   |                               |
|-----------------------------------|-------------------------------|
| Catalog #                         | 5980600                       |
| Capacity                          | 6 U.S. Gallons*, 22.7 Liters* |
| Peak HP                           | 2.5†                          |
| UPC                               | 0 26282 59806 6               |
| Carton Dimensions                 | 13 3/4" x 13 3/4" x 22 1/4"   |
| Cube                              | 2.43                          |
| Shipping Weight                   | 13 lbs. (5.9 kg)              |
| Cubic Feet per Minute             | 130                           |
| Sealed Pressure (inches of water) | 55                            |
| Air Watts                         | 220                           |
| Electric Rating                   | 120V~ 60Hz 8A                 |
| Cord                              | 6 ft. (1.8 m)                 |



Accessories: 7' (2.1 m) x 1 1/4" (3.2 cm) hose, (3) extension wands, 10" (25.4 cm) wet/dry nozzle, foam sleeve and reusable dry filter.

\*\* Specifications subject to change without notice.

# shop·vac®

## QUIET PLUS® Series



WET PICK UP



DRY PICK UP

These wet/dry vacs offer an even greater range of quiet power. With motors ranging from 2.75 to 4.5 peak horsepower†, we can equip you with the power you need, for any mess... wet or dry.



5980700  
6 U.S. Gallons\*, 22.7 Liters\*  
2.75 Peak HP†

2

Both vacs backed by a two year warranty



5980800  
8 U.S. Gallons\*, 30.3 Liters\*  
3.0 Peak HP†



Built in top carry handle



Powerful rear blower



Convenient on/off switch

### TYPICAL CHARACTERISTICS\*\*

|                                   |  |
|-----------------------------------|--|
| Catalog #                         | 5980700  |
| Capacity                          | 6 U.S. Gallons*, 22.7 Liters*  |
| Peak HP                           | 2.75†  |
| UPC                               | 0 26282 59807 3  |
| Carton Dimensions                 | 13 <sup>3</sup> / <sub>4</sub> " x 13 <sup>3</sup> / <sub>4</sub> " x 22 <sup>1</sup> / <sub>4</sub> " |
| Cube                              | 2.43   |
| Shipping Weight                   | 13 lbs. (5.9 kg)   |
| Cubic Feet per Minute             | 135  |
| Sealed Pressure (inches of water) | 56   |
| Air Watts                         | 230  |
| Electric Rating                   | 120V~ 60Hz 8.2A  |
| Cord                              | 6 ft. (1.8 m)  |



Accessories: 7' (2.1 m) x 1<sup>1</sup>/<sub>4</sub>" (3.2 cm) hose, (3) extension wands, 10" (25.4 cm) wet/dry nozzle, crevice tool, gulper nozzle, foam sleeve, reusable dry filter and disposable filter bag.

|                                   |  |
|-----------------------------------|--|
| Catalog #                         | 5980800  |
| Capacity                          | 8 U.S. Gallons*, 30.3 Liters*  |
| Peak HP                           | 3.0†   |
| UPC                               | 0 26282 59808 0  |
| Carton Dimensions                 | 16 <sup>3</sup> / <sub>8</sub> " x 16 <sup>3</sup> / <sub>8</sub> " x 22 <sup>1</sup> / <sub>4</sub> " |
| Cube                              | 3.45   |
| Shipping Weight                   | 15.5 lbs. (7.03 kg)  |
| Cubic Feet per Minute             | 143  |
| Sealed Pressure (inches of water) | 57   |
| Air Watts                         | 250  |
| Electric Rating                   | 120V~ 60Hz 8.4A  |
| Cord                              | 6 ft. (1.8 m)  |



Accessories: 7' (2.1 m) x 1<sup>1</sup>/<sub>4</sub>" (3.2 cm) hose, (3) extension wands, 10" (25.4 cm) wet/dry nozzle, crevice tool, gulper nozzle, foam sleeve, reusable dry filter and disposable filter bag.



CLOGGED SINKS



WORKSHOPS

# shop·vac<sup>®</sup>

## QUIET PLUS<sup>®</sup> Series



**5981000**  
**10 U.S. Gallons\*, 37.8 Liters\***  
**3.5 Peak HP†**

**2**

Both vacs backed by a two year warranty



**5981200**  
**12 U.S. Gallons\*, 45.5 Liters\***  
**4.5 Peak HP†**



Inlet accepts 1 1/4" and 2 1/2" diameter hoses



On board tool storage keeps you organized



360° Easy glide caster system

### TYPICAL CHARACTERISTICS\*\*

|                                   |                                |
|-----------------------------------|--------------------------------|
| Catalog #                         | 5981000                        |
| Capacity                          | 10 U.S. Gallons*, 37.8 Liters* |
| Peak HP                           | 3.5†                           |
| UPC                               | 0 26282 59810 3                |
| Carton Dimensions                 | 16 3/8" x 16 3/8" x 25 1/2"    |
| Cube                              | 3.96                           |
| Shipping Weight                   | 17 lbs. (7.7 kg)               |
| Cubic Feet per Minute             | 145                            |
| Sealed Pressure (inches of water) | 58                             |
| Air Watts                         | 255                            |
| Electric Rating                   | 120V~ 60Hz 8.5A                |
| Cord                              | 6 ft. (1.8 m)                  |



Accessories: 7' (2.1 m) x 1 1/4" (3.2 cm) hose, (3) extension wands, 10" (25.4 cm) wet/dry nozzle, crevice tool, gulper nozzle, foam sleeve, reusable dry filter and disposable filter bag.

|                                   |                                |
|-----------------------------------|--------------------------------|
| Catalog #                         | 5981200                        |
| Capacity                          | 12 U.S. Gallons*, 45.5 Liters* |
| Peak HP                           | 4.5†                           |
| UPC                               | 0 26282 59812 7                |
| Carton Dimensions                 | 18 1/8" x 18 1/8" x 24 1/2"    |
| Cube                              | 4.66                           |
| Shipping Weight                   | 18 lbs. (8.2 kg)               |
| Cubic Feet per Minute             | 175                            |
| Sealed Pressure (inches of water) | 59                             |
| Air Watts                         | 320                            |
| Electric Rating                   | 120V~ 60Hz 9.9A                |
| Cord                              | 6 ft. (1.8 m)                  |



Accessories: 7' (2.1 m) x 1 1/4" (3.2 cm) hose, (3) extension wands, 10" (25.4 cm) wet/dry nozzle, crevice tool, gulper nozzle, foam sleeve, reusable dry filter and disposable filter bag.

# shop·vac®

QSP® QUIET DELUXE® Series



These wet/dry vacs offer the greatest range of quiet power. From 3.0 to 6.5 peak horsepower†, the Quiet Deluxe series offers the maximum power you need for the toughest messes... wet or dry.



5983000  
6 U.S. Gallons\*, 22.7 Liters\*  
3.0 Peak HP†



5983100  
8 U.S. Gallons\*, 30.3 Liters\*  
3.5 Peak HP†



5983200  
12 U.S. Gallons\*, 45.5 Liters\*  
5.0 Peak HP†

**3**

All vacs backed by a three year warranty



Convenient on/off switch



Built in top carry handle



Powerful rear blower

## TYPICAL CHARACTERISTICS\*\*

|                                   |                               |
|-----------------------------------|-------------------------------|
| Catalog #                         | 5983000                       |
| Capacity                          | 6 U.S. Gallons*, 22.7 Liters* |
| Peak HP                           | 3.0†                          |
| UPC                               | 0 26282 59830 1               |
| Carton Dimensions                 | 13 3/4" x 13 3/4" x 22"       |
| Cube                              | 2.41                          |
| Shipping Weight                   | 14 lbs. (6.3 kg)              |
| Cubic Feet per Minute             | 143                           |
| Sealed Pressure (inches of water) | 57                            |
| Air Watts                         | 250                           |
| Electric Rating                   | 120V~ 60Hz 8.4A               |
| Cord                              | 6 ft. (1.8 m)                 |



Accessories: 7' (2.1 m) x 1 1/4" (3.2 cm) hose, (3) extension wands, 10" (25.4 cm) wet/dry nozzle, ProLong® cartridge filter and disposable filter bag.

|                                   |                               |
|-----------------------------------|-------------------------------|
| Catalog #                         | 5983100                       |
| Capacity                          | 8 U.S. Gallons*, 30.3 Liters* |
| Peak HP                           | 3.5†                          |
| UPC                               | 0 26282 59831 8               |
| Carton Dimensions                 | 16 3/8" x 16 3/8" x 22 1/4"   |
| Cube                              | 3.45                          |
| Shipping Weight                   | 16.25 lbs. (7.4 kg)           |
| Cubic Feet per Minute             | 145                           |
| Sealed Pressure (inches of water) | 58                            |
| Air Watts                         | 255                           |
| Electric Rating                   | 120V~ 60Hz 8.5A               |
| Cord                              | 6 ft. (1.8 m)                 |



Accessories: 7' (2.1 m) x 1 1/4" (3.2 cm) hose, (3) extension wands, 10" (25.4 cm) wet/dry nozzle, ProLong® cartridge filter and disposable filter bag.

|                                   |                                |
|-----------------------------------|--------------------------------|
| Catalog #                         | 5983200                        |
| Capacity                          | 12 U.S. Gallons*, 45.5 Liters* |
| Peak HP                           | 5.0†                           |
| UPC                               | 0 26282 59832 5                |
| Carton Dimensions                 | 18 1/8" x 18 1/8" x 24 1/2"    |
| Cube                              | 4.66                           |
| Shipping Weight                   | 22 lbs. (8.2 kg)               |
| Cubic Feet per Minute             | 190                            |
| Sealed Pressure (inches of water) | 59                             |
| Air Watts                         | 340                            |
| Electric Rating                   | 120V~ 60Hz 11.3A               |
| Cord                              | 12 ft. (3.7 m)                 |



Accessories: 8' (2.4 m) x 2 1/2" (6.4 cm) hose, (2) extension wands, 14" (35.6 cm) wet/dry floor nozzle, 14" (35.6 cm) brush shoe, 14" (35.6 cm) squeegee shoe, crevice tool, ProLong® cartridge filter and disposable filter bag.



CARPET



YARD DEBRIS

# shop·vac®

QSP® QUIET **DELUXE**® Series



5983300  
16 U.S. Gallons\*, 60.5 Liters\*  
6.5 Peak HP†

**3**

Both vacs backed by a three year warranty



5983400  
20 U.S. Gallons\*, 75.7 Liters\*  
6.5 Peak HP†



Inlet accepts 1 1/4" and 2 1/2" diameter hoses



Heavy duty casters



Convenient tool storage (not standard on all models)

## TYPICAL CHARACTERISTICS\*\*

|                                   |                                |
|-----------------------------------|--------------------------------|
| Catalog #                         | 5983300                        |
| Capacity                          | 16 U.S. Gallons*, 60.5 Liters* |
| Peak HP                           | 6.5†                           |
| UPC                               | 0 26282 59833 2                |
| Carton Dimensions                 | 19 3/4" x 19 3/4" x 24 1/4"    |
| Cube                              | 5.47                           |
| Shipping Weight                   | 25.5 lbs. (11.6 kg)            |
| Cubic Feet per Minute             | 210                            |
| Sealed Pressure (inches of water) | 60                             |
| Air Watts                         | 390                            |
| Electric Rating                   | 120V~ 60Hz 12A                 |
| Cord                              | 12 ft. (3.7 m)                 |



Accessories: 8' (2.4 m) x 2 1/2" (6.4 cm) hose, (2) extension wands, 14" (35.6 cm) wet/dry floor nozzle, 14" (35.6 cm) brush shoe, 14" (35.6 cm) squeegee shoe, crevice tool, ProLong® cartridge filter and disposable filter bag.

|                                   |                                |
|-----------------------------------|--------------------------------|
| Catalog #                         | 5983400                        |
| Capacity                          | 20 U.S. Gallons*, 75.7 Liters* |
| Peak HP                           | 6.5†                           |
| UPC                               | 0 26282 59834 9                |
| Carton Dimensions                 | 19 3/4" x 19 3/4" x 30"        |
| Cube                              | 6.77                           |
| Shipping Weight                   | 31.25 lbs. (14.2 kg)           |
| Cubic Feet per Minute             | 210                            |
| Sealed Pressure (inches of water) | 60                             |
| Air Watts                         | 390                            |
| Electric Rating                   | 120V~ 60Hz 12A                 |
| Cord                              | 12 ft. (3.7 m)                 |



Accessories: 8' (2.4 m) x 2 1/2" (6.4 cm) hose, (2) extension wands, 14" (35.6 cm) wet/dry floor nozzle, 14" (35.6 cm) brush shoe, 14" (35.6 cm) squeegee shoe, crevice tool, ProLong® cartridge filter and disposable filter bag.

# shop·vac®

## PUMP VAC



WORKSHOP DEBRIS



WET PICK UP

The Pump Vac gives you a wet/dry vac with a built in water pump.<sup>§</sup> The built in water pump allows you to remove liquids from the vacuum's tank using a standard garden hose (not included).

<sup>§</sup>Do not leave vacuum unattended when it is plugged in and/or operating.



5821200  
12 U.S. Gallons\*, 45.5 Liters\*  
5.0 Peak HP†

**3**

Backed by a three year warranty



HOOK IT UP



PICK IT UP



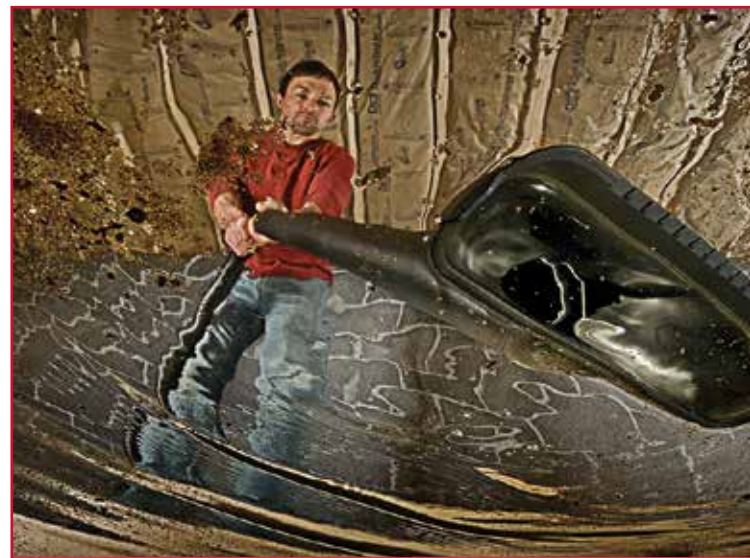
PUMP IT OUT

### TYPICAL CHARACTERISTICS\*\*

|                                   |                                |
|-----------------------------------|--------------------------------|
| Catalog #                         | 5821200                        |
| Capacity                          | 12 U.S. Gallons*, 45.5 Liters* |
| Peak HP                           | 5.0†                           |
| UPC                               | 0 26282 58212 6                |
| Carton Dimensions                 | 18¼" x 18¼" x 24½"             |
| Cube                              | 4.72                           |
| Shipping Weight                   | 22.5 lbs. (10.2 kg)            |
| Cubic Feet per Minute             | 135‡                           |
| Sealed Pressure (inches of water) | 54‡                            |
| Air Watts                         | 255‡                           |
| Electric Rating                   | 120V~ 60Hz 11.3A               |
| Cord                              | 12 ft. (3.7 m)                 |



Accessories: 8' (2.4 m) x 2½" (6.4 cm) Lock-On® hose, (2) extension wands, 14" (35.6 cm) wet/dry floor nozzle, elbow grip, tool holder, hose holder, foam sleeve, ProLong® cartridge filter and disposable filter bag.



‡ ASTM Tested with a 2½" (6.4 cm) diameter Shop-Vac® hose.

§Do not leave vacuum unattended when it is plugged in and/or operating. Garden hose not included.



WORKSHOP DEBRIS



WET PICK UP

# shop·vac® PUMP VAC



**3**  
Backed by  
a three year  
warranty

5821600  
16 U.S. Gallons\*, 60.5 Liters\*  
6.0 Peak HP†



Dry pick up



Lock-On® hose



Tool storage



Tank drain



## TYPICAL CHARACTERISTICS\*\*

|                                      |                                |
|--------------------------------------|--------------------------------|
| Catalog #                            | 5821600                        |
| Capacity                             | 16 U.S. Gallons*, 60.5 Liters* |
| Peak HP                              | 6.0†                           |
| UPC                                  | 0 26282 58216 4                |
| Carton Dimensions                    | 19¾" x 19¾" x 24½"             |
| Cube                                 | 5.53                           |
| Shipping Weight                      | 26.25 lbs. (11.9 kg)           |
| Cubic Feet per Minute                | 135‡                           |
| Sealed Pressure<br>(inches of water) | 52‡                            |
| Air Watts                            | 270‡                           |
| Electric Rating                      | 120V~ 60Hz 11.8A               |
| Cord                                 | 12 ft. (3.7 m)                 |



**Accessories:** 8' (2.4 m) x 2½" (6.4 cm) Lock-On® hose, (2) extension wands, 14" (35.6 cm) wet/dry floor nozzle, elbow grip, tool holder, hose holder, foam sleeve, ProLong® cartridge filter and disposable filter bag.

‡ ASTM Tested with a 2½" (6.4 cm) diameter Shop-Vac® hose.  
§ Do not leave vacuum unattended when it is plugged in and/or operating. Garden hose not included.  
Specifications subject to change without notice.

# shop·vac®

ULTRA BLOWER VAC

Wet/dry vac with **DETACHABLE BLOWER**



LEAF CLEAN UP



WET PICK UP

This Blower Vac gives you a wet/dry vacuum that can also be converted into a handheld, detachable blower.



**3**

Backed by a three year warranty



9631200  
12 U.S. Gallons\*, 45.5 Liters\*  
4.5 Peak HP†

## TYPICAL CHARACTERISTICS\*\*

|                                   |                                |
|-----------------------------------|--------------------------------|
| Catalog #                         | 9631200                        |
| Capacity                          | 12 U.S. Gallons*, 45.5 Liters* |
| Peak HP                           | 4.5†                           |
| UPC                               | 0 26282 96312 3                |
| Carton Dimensions                 | 18 1/8" x 18 1/8" x 22 1/4"    |
| Cube                              | 4.23                           |
| Shipping Weight                   | 22.25 lbs. (10.1 kg)           |
| Cubic Feet per Minute             | 145                            |
| Sealed Pressure (inches of water) | 55                             |
| Air Watts                         | 305                            |
| Electric Rating                   | 120V~ 60Hz 9.5A                |
| Cord                              | 18 ft. (5.5 m)                 |



Accessories: 7' (2.1 m) x 1 1/4" (3.2 cm) Lock-On® hose, (3) 1 1/4" (3.2 cm) extension wands, 10" (25.4 cm) wet/dry nozzle, (1) 2 1/2" (6.4 cm) extension wand, concentrator nozzle, blower nozzle, tool holder, foam sleeve and ProLong® cartridge filter.



Detachable blower, quick and easy



Lock-On® hose



On board tool storage keeps you organized



Handheld detachable blower



Extra large tank drain



DRY PICK UP



WET PICK UP

# HangOn<sup>®</sup>

by shop-vac<sup>®</sup>

These HangOn<sup>®</sup> vacs are lightweight and portable. They can be used for quick wet and dry pick up jobs in your house, garage, workshop or vehicles. The wall mount bracket makes for easy, compact storage, while the wall mounted tool holder keeps your tools organized.

**2**

Backed by a two year warranty



2030100  
1.5 U.S. Gallons\*, 5.6 Liters\*  
2.0 Peak HP†

**3**

Backed by a three year warranty



2036000  
2.5 U.S. Gallons\*, 9.4 Liters\*  
2.5 Peak HP†



Convenient wall mounting bracket



Quick kitchen spills



Lightweight and portable

## TYPICAL CHARACTERISTICS\*\*

|                                   |  |
|-----------------------------------|--|
| Catalog #                         | 2030100  |
| Capacity                          | 1.5 U.S. Gallons*, 5.6 Liters*   |
| Peak HP                           | 2.0†   |
| UPC                               | 0 26282 20301 4  |
| Carton Dimensions                 | 11 <sup>3</sup> / <sub>4</sub> " x 10 <sup>3</sup> / <sub>4</sub> " x 11 <sup>3</sup> / <sub>4</sub> " |
| Cube                              | .86  |
| Shipping Weight                   | 6.75 lbs. (3.1 kg)   |
| Cubic Feet per Minute             | 59   |
| Sealed Pressure (inches of water) | 48   |
| Air Watts                         | 140  |
| Electric Rating                   | 120V~ 60Hz 7.8A  |
| Cord                              | 6 ft. (1.8 m)  |



4' (1.2 m) x 1<sup>1</sup>/<sub>4</sub>" (3.2 cm) hose, gulper nozzle, crevice tool, wall mount bracket, reusable dry filter and foam sleeve.

|                                   |   |
|-----------------------------------|---|
| Catalog #                         | 2036000   |
| Capacity                          | 2.5 U.S. Gallons*, 9.4 Liters*  |
| Peak HP                           | 2.5†  |
| UPC                               | 0 26282 20360 1   |
| Carton Dimensions                 | 12 <sup>1</sup> / <sub>2</sub> " x 11 <sup>1</sup> / <sub>4</sub> " x 13" |
| Cube                              | 1.06  |
| Shipping Weight                   | 8.25 lbs. (3.7 kg)  |
| Cubic Feet per Minute             | 100   |
| Sealed Pressure (inches of water) | 52  |
| Air Watts                         | 185   |
| Electric Rating                   | 120V~ 60Hz 8A   |
| Cord                              | 6 ft. (1.8 m)   |



Accessories: 4' (1.2 m) x 1<sup>1</sup>/<sub>4</sub>" (3.2 cm) hose, gulper nozzle, crevice tool, wall mount bracket, reusable dry filter and foam sleeve.

# shop·vac<sup>®</sup> WALL MOUNT™



VEHICLE CLEAN UP



DRY PICK UP



3940100  
3.5 U.S. Gallons\*, 13.2 Liters\*  
3.0 Peak HP†

Centralized cleaning convenience for the garage, workshop, hobby area, laundry room or anywhere a hands free vacuum center is desirable. Complete with wall mount bracket and 18' (5.5 m) extra long reach hose for wide area cleaning. Space saving "wall mount" design provides a cleaning solution that's there when you need it!

**3**

Backed by  
a three year  
warranty



Dry messes



Wet spills



Wall mount

## TYPICAL CHARACTERISTICS\*\*

|                                      |  |
|--------------------------------------|--|
| Catalog #                            | 3940100  |
| Capacity                             | 3.5 U.S. Gallons*, 13.2 Liters*  |
| Peak HP                              | 3.0†   |
| UPC                                  | 0 26282 39401 9  |
| Carton Dimensions                    | 12 <sup>7</sup> / <sub>8</sub> " x 12 <sup>7</sup> / <sub>8</sub> " x 26 <sup>1</sup> / <sub>4</sub> " |
| Cube                                 | 2.5  |
| Shipping Weight                      | 15 lbs. (6.8 kg)   |
| Cubic Feet per Minute                | 130  |
| Sealed Pressure<br>(inches of water) | 52   |
| Air Watts                            | 270  |
| Electric Rating                      | 120V~ 60Hz 7.2A  |
| Cord                                 | 6 ft. (1.8 m)  |



Accessories: 18' (5.5 m) x 1<sup>1</sup>/<sub>4</sub>" (3.2 cm) Lock-On® hose, (3) extension wands, crevice tool, round brush, gulper nozzle, 10" (25.4 cm) wet/dry nozzle, cartridge filter, disposable filter bag, tool storage bag with wall hook and wall mount bracket.





VEHICLE CLEAN UP



DRY PICK UP

# MICRO™

by shop·vac®

This vac is lightweight and portable. It can be used for quick wet and dry pick up jobs in your home, garage, workshop or vehicles. The wall bracket makes for easy, compact storage, while the wall mount tool holder keeps your tools organized.



**2**

Backed by a two year warranty

2021000  
1.0 U.S. Gallons\*, 3.8 Liters\*  
1.0 Peak HP†



Dry messes



Wet spills

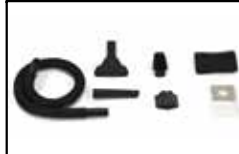


Wall mount



## TYPICAL CHARACTERISTICS\*\*

|                                   |                                |
|-----------------------------------|--------------------------------|
| Catalog #                         | 2021000                        |
| Capacity                          | 1.0 U.S. Gallons*, 3.8 Liters* |
| Peak HP                           | 1.0†                           |
| UPC                               | 0 26282 20210 9                |
| Carton Dimensions                 | 10 1/4" x 10 1/4" x 11"        |
| Cube                              | .67                            |
| Shipping Weight                   | 7 lbs. (3.2 kg)                |
| Cubic Feet per Minute             | 98                             |
| Sealed Pressure (inches of water) | 46                             |
| Air Watts                         | 145                            |
| Electric Rating                   | 120V~ 60Hz 6A                  |
| Cord                              | 6 ft. (1.8 m)                  |



Accessories: 4' (1.2 m) x 1 1/4" (3.2 cm) hose, gulper nozzle, crevice tool, wall mount bracket, wall mount tool holder, foam sleeve and disposable filter bag.

# shop-vac® ASH VACUUM



FIREPLACES



GRILLS

Specially designed for fireplace, wood/pellet stoves, coal stoves, BBQ grills and more...\*

\* cold ash only

## Features:

- Durable, easy to clean stainless steel tank
- Powerful by-pass motor to pick up your toughest messes
- Thermal protective device for user safety
- Durable, vinyl covered flexible steel hose
- Two stage filtration system stops ashes from discharging out the exhaust
- Efficient HEPA cartridge filter stops ultra fine dust and resists clogging
- Dry only



**2**

Backed by a two year warranty

4041200  
Ash Vacuum



Cold furnace ashes



Outdoor fire pits



Wood stoves

## TYPICAL CHARACTERISTICS\*\*

|                                   |  |
|-----------------------------------|--|
| Catalog #                         | 4041200  |
| Capacity                          | N/A  |
| Peak HP                           | N/A  |
| UPC                               | 0 26282 40412 1  |
| Carton Dimensions                 | 12 <sup>3</sup> / <sub>4</sub> " x 12 <sup>3</sup> / <sub>4</sub> " x 18 <sup>1</sup> / <sub>2</sub> " |
| Cube                              | 1.74   |
| Shipping Weight                   | 13.5 lbs. (6.1 kg)   |
| Cubic Feet per Minute             | 80   |
| Sealed Pressure (inches of water) | 40   |
| Air Watts                         | 130  |
| Electric Rating                   | 120V~ 60Hz 6.3A  |
| Cord                              | 6 ft. (1.8 m)  |



Accessories: 4' (1.2 m) x 1½" (3.8 cm) Lock-On® hose, metal intake nozzle, metal crevice tool and CleanStream® HEPA cartridge filter.



STAINLESS STEEL TANK







©2016 Shop-Vac Corporation

2323 Reach Road | Williamsport, PA 17701 | Phone: (570) 326-3557 | Fax: (570) 326-7185 | [www.shopvac.com](http://www.shopvac.com)

All rights reserved.

Shop-Vac®, QSP®, Power•Lid®, Tool Mate®, Shop-Vac Air Mover®, HangOn®, ProLong®, Shop-Vac Quiet®, Shop-Vac Quiet Plus®, Shop-Vac Quiet Deluxe® and Lock-On® are registered trademarks of Shop-Vac Corporation.

†"Peak Horsepower" (PHP) is a term used in the wet-dry vacuum industry for consumer comparison purposes. It does not denote the operational horsepower of a wet-dry vacuum but rather the horsepower output of a motor, including the motor's inertial contribution, achieved in laboratory testing. In actual use, Shop-Vac motors do not operate at the peak horsepower shown.

\*Tank capacity refers to actual tank volume, and does not reflect capacity available during operation.

SVA0001173