

This Owner's Manual is provided and hosted by [Appliance Factory Parts](#).



Russell Hobbs RH3VTD400 Owner's Manual

[Shop genuine replacement parts for Russell Hobbs
RH3VTD400](#)



[Find Your Russell Hobbs Dryer Parts - Select From 6 Models](#)

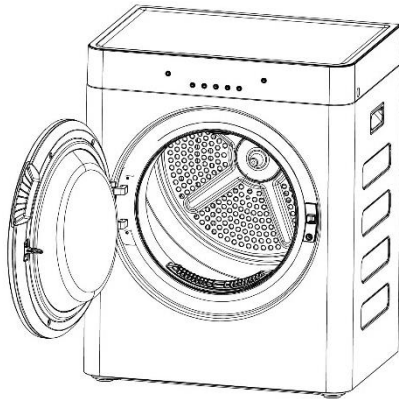
----- Manual continues below -----



Russell Hobbs

3kg Vented Tumble Dryer

Instruction Manual



Model number(s):
RH3VTD400(B)(S)

For Customer Services & Spare Parts please call **0345 208 8750**
Opening times: Monday - Friday 8am – 8pm & Saturday 9am – 1pm
or visit us at www.productcare.co.uk

PLEASE RETAIN
FOR FUTURE REFERENCE

Contents

Safety information	3 - 7
Before using your appliance	8
Control panel	9 - 10
Installation	11 - 12
Operating instructions	13 - 16
Care and maintenance	17
Trouble shooting	18-19
Technical specification	20
Product fiche	20
Connection to mains supply	21
Guarantee	22
Notes	23



Russell Hobbs

For Customer Services & Spare Parts please call **0345 208 8750**
Opening times: Monday - Friday 8am – 8pm & Saturday 9am – 1pm
or visit us at www.productcare.co.uk

Safety instructions

Important note:

Please read this booklet before installing and switching on this appliance. The manufacturer assumes no responsibility for incorrect installation and usage as described in this booklet.

- **This appliance can be used by children aged from 8 years and above and persons with reduced physical, sensory or mental capabilities or lack of experience and knowledge if they have been given supervision or instruction concerning use of the appliance in a safe way and understand the hazards involved. Children shall not play with the appliance.**
- Do not use an extension lead for this appliance. Only plug directly into a wall socket.
- Do not plug in damaged plug sockets.
- In case the power cable becomes damaged, contact **0345 208 8750** for advice.
- Never pull the cable when unplugging – always grip the plug itself.
- Do not plug-in or pull-out the plug from the receptacle with wet hands to prevent electric shock.
- Never touch the machine with wet hands or feet.
- Never force the door to open when the appliance is running.
- In case of any breakdown, unplug the appliance first and then turn the tap off. Do not attempt to repair by yourself, always contact **0345 208 8750** for advice.
- Remember that packaging materials of your machine may be dangerous for children.
- Keep the packaging materials in a place where children cannot reach or dispose of them appropriately.
- Do not allow your children to play with the tumble dryer as it is an electrically driven appliance.
- Children of less than 3 years should be kept away unless continuously supervised
- Keep your pets away from your machine.
- Your machine should only be used by adults in line with the information provided in this user's manual.



For Customer Services & Spare Parts please call **0345 208 8750**
Opening times: Monday - Friday 8am – 8pm & Saturday 9am – 1pm
or visit us at www.productcare.co.uk

Safety instructions

- Your machine is designed to be used domestically. Commercial use will cause your warranty to be cancelled.
- Any tampering with the machine, except by a qualified engineer, in any way, will cause your warranty to be invalid.
- Ideal ambient temperature of your machine is 15-30°C.
- Do not place your machine on carpet as this will block ventilation of the base.
- Do not keep inflammable liquids near your machine.
- Your machine is not covered under warranty for faults caused by any kind of external factors (pesticides, fire, etc.).

To avoid fire, electrical shock and other accidents, please remember the following:

To ensure your safety, an earthed power supply should be used.

- Only the voltage indicated in power label can be used. If you are not clear of the voltage at home, please contact your electricity supplier.
- Adequate ventilation must be provided around the tumble dryer.
- Exhaust air must not be discharged into a flue which is used for exhausting other fumes from appliances burning gas or other fuel.
- Please note it is not recommended that the dryer is placed directly next to ovens, cookers, or other heat sources as the performance of the dryer may be affected.
- A carpet must not obstruct the ventilation openings in the base of the dryer.
- Do not stack the tumble dryer on top of other appliances .
- Any electrical work required to install the appliance should be carried out by a qualified person.
- It is important to clean the lint filter after each drying cycle or the restrictions to airflow will extend drying times and could cause the safety cut-out to trip.



For Customer Services & Spare Parts please call **0345 208 8750**
Opening times: Monday - Friday 8am – 8pm & Saturday 9am – 1pm
or visit us at www.productcare.co.uk

Safety instructions

- Under no circumstances should anything other than the recommended articles be placed in the tumble dryer.
- The tumble dryer should be serviced by an appointed service team with genuine parts. Please contact the service team below for assistance with any repairs.
- It is dangerous to alter or modify the product in any way other than fitting authorized accessories.
- We recommend that the appliance is unplugged each time after use. It should always be disconnected from the electricity supply when not in use for long periods of time.
- The rear of the dryer gets quite hot during use. Position the dryer so that the back is not accessible while in operation, but ensure that the sides have a space available to allow airflow. Use the hose to assist with the ventilation.
- The special mains cable and plug assembly must only be replaced with a genuine part from the manufacturer, please contact the customer support team below.
- It is important to clean fluff from the window of the dryer and around the door seal after each drying cycle.
- Do not install the appliance close to a fire or heat source.
- Do not rest anything burning, such as a candle, on the appliance.
- Do not install the appliance in a damp environment, the dampness may cause damage to the tumble dryer.
- Do not install the tumble dryer in direct sunlight, or in a hot environment.
- The tumble dryer is not to be used if industrial chemicals have been used for cleaning. Make sure items that may cause damage do not get in to the dryer, such as coins, safety pins, nails, screws, stones. Check the pockets on all the items of clothing.



For Customer Services & Spare Parts please call **0345 208 8750**
Opening times: Monday - Friday 8am – 8pm & Saturday 9am – 1pm
or visit us at www.productcare.co.uk

Safety instructions

- Do not place items that have any type of oil soaked in to the fabric, in the tumble dryer. There is a potential the oil could catch on fire.
- Fabric softeners, or similar products, should be used as specified by the fabric softener instructions.
- Do not use the appliance to dry cushions, quilts, duvets, or similar items.
- The appliance must not be installed in a cabinet.
- the appliance must not be installed behind a lockable door, a sliding door or a door with a hinge on the opposite side to that of the tumble dryer, in such a way that a full opening of the tumble dryer door is restricted.
- Check the appliance is not standing or pressing on the power cable.
- Foam rubber, latex, shower caps, waterproof textiles, rubber backed articles and any other items with foam rubber pads should not be dried in the tumble dryer.
- Always unplug the appliance after use, clean and maintain.
- Do not overload the appliance.
- Do not place clothes that are dripping wet in the tumble dryer..
- Clothes that have been in contact with volatile liquids should not be machine dried. Any fluid should be fully removed from the item before it can be dried.
- Items that have been soiled with substances such as cooking oil, acetone, alcohol, petrol, kerosene, spot removers, turpentine, waxes and wax removers should be washed in hot water with an extra amount of detergent before being dried in the tumble dryer.
- Do not dry unwashed items in the tumble dryer.
- The final part of a tumble drying cycle occurs without heat (cool down cycle) to ensure the items are not damaged. Do not stop the dryer before it has fully finished the drying cycle.
- Do not use excessive, or high pressure water when cleaning the tumble dryer.



For Customer Services & Spare Parts please call **0345 208 8750**
Opening times: Monday - Friday 8am – 8pm & Saturday 9am – 1pm
or visit us at www.productcare.co.uk

Safety instructions

- Oil-affected items can ignite spontaneously, especially when exposed to heat sources such as in a tumble dryer. The items become warm, causing an oxidation reaction in the oil. Oxidation creates heat. If the heat cannot escape, the items can become hot enough to catch fire. Piling, stacking or storing oil-affected items can prevent heat from escaping and so create a fire hazard.
- The appliance should not be overturned during normal use or maintenance.
- Remove all objects from pockets such as lighters and matches.
- **WARNING:** Never stop a tumble dryer before the end of the drying cycle unless all items are quickly removed and spread out so that the heat is dissipated.



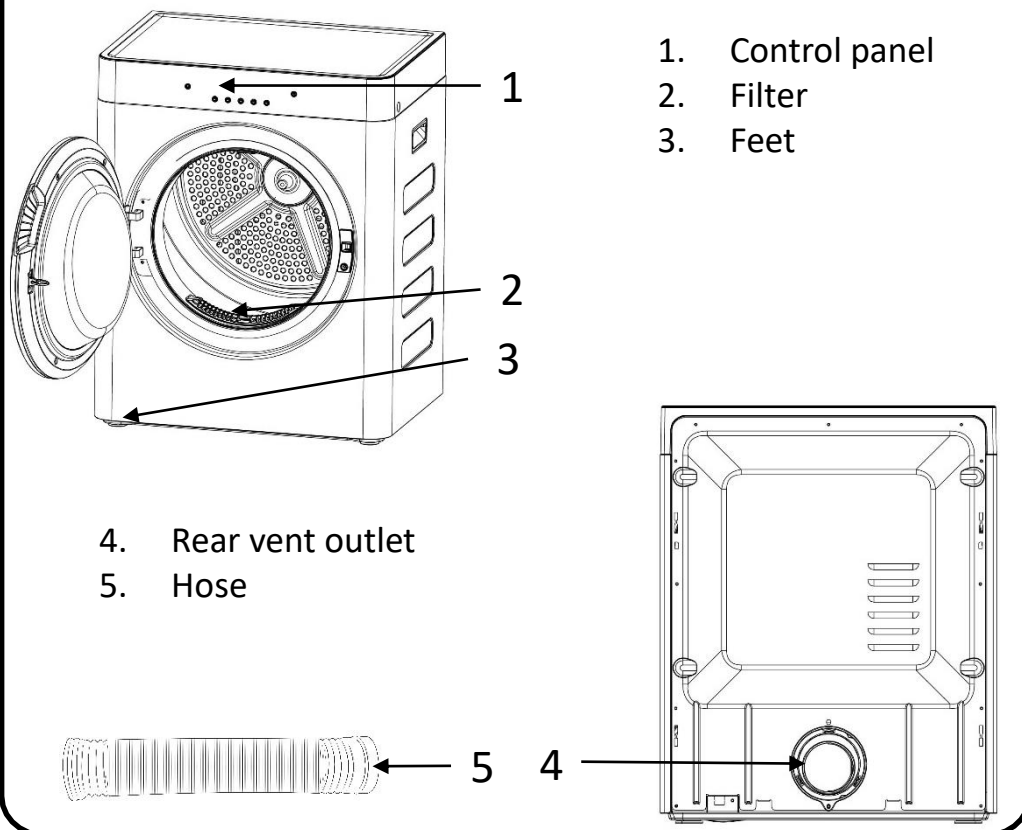
For Customer Services & Spare Parts please call **0345 208 8750**
Opening times: Monday - Friday 8am – 8pm & Saturday 9am – 1pm
or visit us at www.productcare.co.uk

Before using your appliance

Before installation, check that all parts are present. If any parts are missing, please contact the product care service team on: 0345 208 8750.

Feature Diagram

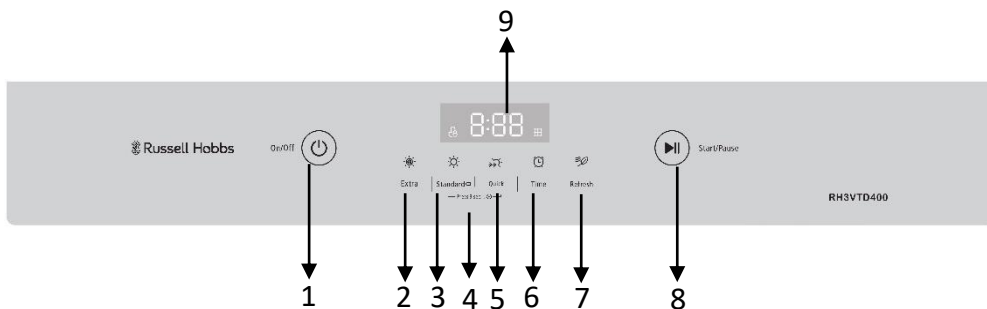
Note: The drawings in the book may vary from your dryer. They are designed to show the different features of all models covered by this book. Your model may not include all features.



 **Russell Hobbs**

For Customer Services & Spare Parts please call **0345 208 8750**
Opening times: Monday - Friday 8am – 8pm & Saturday 9am – 1pm
or visit us at www.productcare.co.uk

Control Panel



1. On/Off

Press the button to turn the dryer on and off

2. Extra

Automatic drying for Cotton clothing (maximum load 3kg). Drying level: Extra dry.

3. Standard

Automatic drying for Cotton and linen (maximum load 3kg). Drying level: Standard dry.

4. Child lock

Prevents children from pressing or operating the dryer, no actions can be carried out until the child lock is de-activated (product can be powered on/off still). Press 'Standard' and 'Quick' controls together for 3 seconds, the child lock icon will be shown on the display.

5. Quick

Fast drying for polyester clothing or mixed fabric (maximum load 0.8kg).

6. Time

Time drying 10 – 120 minutes (maximum load 1kg).



For Customer Services & Spare Parts please call **0345 208 8750**
Opening times: Monday - Friday 8am – 8pm & Saturday 9am – 1pm
or visit us at www.productcare.co.uk

Control Panel

7. Refresh

Refresh clothing or fabric (maximum load 1kg)

8. Start/pause button

Press to start or pause the drying cycle.

9. Display

Indicates the time remaining, child lock icon and filter cleaning reminder icon.

Icons

Child lock

Shown on the display when the child lock has been activated, no actions can be carried out until the child lock is de-activated.

Filter cleaning reminder

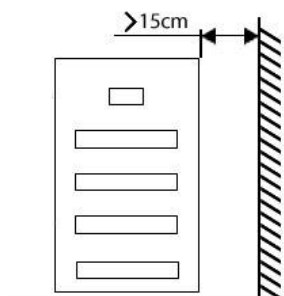
Shown on the display when the fluff filter has to be cleaned, will be shown after each and every use.



For Customer Services & Spare Parts please call **0345 208 8750**
Opening times: Monday - Friday 8am – 8pm & Saturday 9am – 1pm
or visit us at www.productcare.co.uk

Installation

For convenience, dryers are often positioned close to the washing machine, so the laundry can be easily transferred. The dryer should be placed in a ventilated area with at least a 15cm distance from the wall. It is recommended that there are no obstacles within 1.5m in front of dryer.



The tumble dryer will expel moist air, and it's recommended this is directed outside to avoid condensation accumulating inside a room. Position the vent hose supplied, through a window or an air outlet so that the moisture can escape. Contact a qualified tradesman to fit the vent hose so it exits through a wall or door.

Exhaust of humid air from the dryer into a room may damage the walls and furniture in the room.

Install the tumble dryer so that the plug remains accessible after installation. Do not block any vents on the dryer, as this will impair the working of the machine. It should be placed on a firm level surface, as this helps keep noise and vibration to a minimum. There should be no movement from the dryer. Do not remove the feet from the dryer.

The hot air emitted from the tumble dryer can reach temperatures of 70°C, therefore, make sure the floor can handle these temperatures. The tumble dryer works best in a room between 15°C and 30°C.

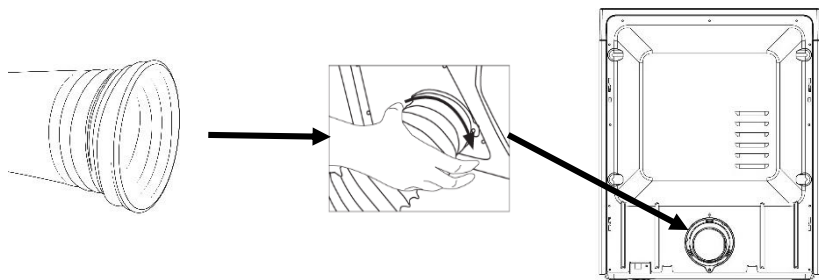


For Customer Services & Spare Parts please call **0345 208 8750**
Opening times: Monday - Friday 8am – 8pm & Saturday 9am – 1pm
or visit us at www.productcare.co.uk

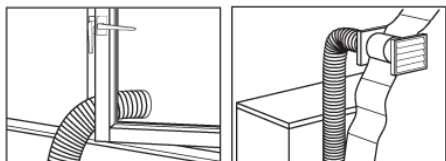
Installation

Fitting the vent hose

One edge of the vent hose has a thread, this edge is to be aligned with the vent on the back of the appliance. When aligned, push and twist the end of the hose in a clockwise direction until the hose is attached securely.

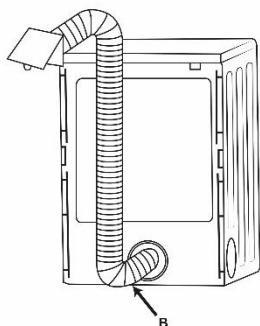


The air outlet hose must be extended directly to the outdoors.



Do not allow more than two bends in the hose and end of the hose should not be bent, stepped on or folded between the drain and the machine.

Moisture may accumulate in the hose, it may be useful to drill a small hole at a low point (indicated as B in the diagram below) to allow the moisture to escape.



 **Russell Hobbs**

For Customer Services & Spare Parts please call **0345 208 8750**
Opening times: Monday - Friday 8am – 8pm & Saturday 9am – 1pm
or visit us at www.productcare.co.uk

Operating Instructions

IMPORTANT NOTE - If you are drying laundry that weighs less than 0.8kg (small loads) when wet, then select the Time function to dry clothes (minimum of 1 hour should be set).

Remove all the packaging material, including any material inside the drum. Before using the appliance for the first time, it is advised to place two damp clothing articles inside the drum and dry them for 1 hour. There may be some dust in the drum of the tumble dryer, and this will help remove the dust.

Step 1 - Open the door and place the laundry in the drum, one item at a time. Lightly shake and loosen the clothing to prevent it getting tangled.

Important note: Do not overload your dryer. The following table lists some common items and their approximate weight when wet, consider this when loading the dryer. Do not overload.

Quilt cover	700g	Shirt	600g
Sheet	500g	T-shirt	200g
Pillow case	200g	Blouse	100g
tablecloth	250g	Bathrobe	1200g
Napkin	100g	Night gown	200g
Bath towel	1200g	Pyjamas	500g
Tea towel	100g	Underwear	100g

Step 2 - Close the door, ensuring no items are trapped in the door.

Step 3 – Switch on the dryer and select the required programme (the selected programme indicator will light up).



For Customer Services & Spare Parts please call **0345 208 8750**
Opening times: Monday - Friday 8am – 8pm & Saturday 9am – 1pm
or visit us at www.productcare.co.uk

Step 4 - Select the programme you require and press the Start/Pause button to start the drying cycle. The programme light will stay lit and the drum will begin rotating and will stop when the selected programme has finished.

To change a programme that has already started, cancel the first programme by pausing and turning the machine off, before turning the machine back on to select the desired programme.

If the door is opened during a cycle the dryer will stop. To restart, close the door and press the start/pause button.

When drying large items such as sheets, we suggest you periodically stop the dryer to redistribute the load.

There is an automatic cool down period at the end of every cycle, during which the heater is switched off. This helps to minimize creasing, and must always be used fully to avoid the risk of fire.

ALWAYS CLEAN THE FLUFF FILTER AFTER EACH USE. Failure to do so could cause the safety cut-out to operate.

Reversing the Door

The door cannot be reversed



For Customer Services & Spare Parts please call **0345 208 8750**
Opening times: Monday - Friday 8am – 8pm & Saturday 9am – 1pm
or visit us at www.productcare.co.uk

Programme table

Programmes	Clothing type	Capacity (KGs)	Dryness level	Approximate time (mins)	Comments
Extra	Cottons, linens and delicates	3.0	Extra	118	You must select the most suitable programme according to the type and weight of your laundry
Standard	Cottons, linens and delicates	3.0	Standard	105	
Quick	A mixture of fabrics and types of laundry that are to be dried together: cottons, synthetics, underwear, shirts, etc.	0.8	Standard	45	
Time	Laundry that weighs less than 1.0KG	1.0	N/A	10 - 120	
Refresh	Laundry that weighs less than 1.0KG and is dry already	1.0	N/A	10	





Important note: the times shown in the table are guidelines, the time of each programme will adjust according to the load that is being dried.



For Customer Services & Spare Parts please call **0345 208 8750**
 Opening times: Monday - Friday 8am – 8pm & Saturday 9am – 1pm
 or visit us at www.productcare.co.uk

Operating Instructions

- Never tumble dry the following; Delicate items such as net curtains, woollen items, silk items, items with metal trims, nylon tights, bulky items such as blankets, or sleeping bags, feather quilts and items containing or including rubber foam.
- Follow the instructions on the garment label;

	Tumble dry
	Normal dry
	Delicate drying
	Do Not tumble dry

- To prevent some items getting tangled, make sure zips, press studs, and hooks are closed, to try and prevent any tangling with other items.
- Do not over dry laundry, by not over drying it avoids creasing and saves energy.
- Avoid drying dark clothes with light coloured fluffy items, the fluff will be noticeable on the dark clothing.
- Make sure the laundry is thoroughly spun before tumble drying.

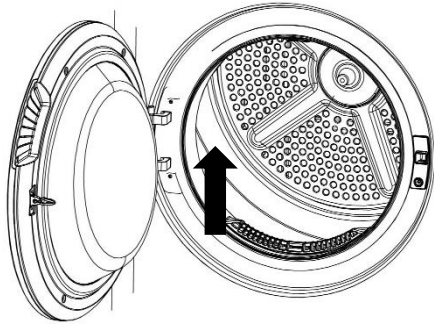


For Customer Services & Spare Parts please call **0345 208 8750**
Opening times: Monday - Friday 8am – 8pm & Saturday 9am – 1pm
or visit us at www.productcare.co.uk

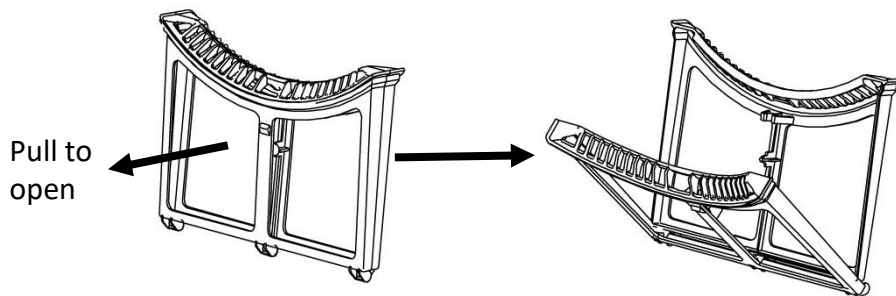
Care and maintenance

ALWAYS CLEAN THE FILTER AFTER EACH USE. Failure to do so could cause the safety cut-out to operate.

- Pull the filter upwards from the appliance.



- Open the filter and remove any threads or fluff by hand or with a soft brush.



- Close the filter and slide it back into place.
- Wash the filter occasionally in detergent solution using a soft brush to remove small particles.
- If your filter becomes damaged, replace it to ensure no damage is caused to the dryer.



For Customer Services & Spare Parts please call **0345 208 8750**
Opening times: Monday - Friday 8am – 8pm & Saturday 9am – 1pm
or visit us at www.productcare.co.uk

Trouble shooting

Problem	Cause	Solution
Your appliance does not start.	It is not plugged in	Plug the machine in
	The fuse has blown	Replace the fuse
	Electricity cut -off	Check mains power
	Start/pause button not pressed	Press the Start/pause button
	The machine door is not completely closed	Close the machine door
Clothes aren't dry	Dryer has been underloaded	If you are drying laundry that weighs less than 0.5kg (small loads) when wet. Then the Time+ programme must be used
	Dryer has been overloaded	Remove excessive clothes
	Incorrect programme selected for the type of fabric you are drying	Check that you used the correct programme.
	Lint/fluff filter full	Check that the lint/fluff filter has been cleaned. A blocked filter will restrict the airflow.
	Dryer not working correctly	Check that your dryer is heating - below the door in the middle, should feel warm to the touch after the first 10-15 minutes of its programme
Laundry has shrunk, become felted or deteriorated	Programme suitable for the laundry type might have not been used	Only dry laundry which is suitable for drying in your machine after checking the labels on your clothes. Also select a programme suitable for the laundry type to dry your clothes
Long drying time	Lint/fluff filter full	The fluff filter/lint filter It should be cleaned after each load
	Incorrect programme selected for the type of fabric you are drying	Change the programme
	Flexible Vent Hose blocked or kinked	Check it for foreign objects or condensate (water)
	Air inlet obstructed	Clear obstruction
	Flap on the storm cover obstructed (Permanent venting)	Clear obstruction
	Clothes excessive wet	Re-run the programme
	Dryer has been overloaded	Remove excessive clothes
External hot or can smell hot	Lint/fluff filter full or dirty	Clean the lint/fluff filter
	The uptake or exhaust duct is dirty	Clean the uptake or exhaust duct



For Customer Services & Spare Parts please call **0345 208 8750**
 Opening times: Monday - Friday 8am – 8pm & Saturday 9am – 1pm
 or visit us at www.productcare.co.uk

Trouble shooting

Error code	Cause	Solution
E33	Temperature Sensor error	Stop the program, and reset the appliance by unplugging the product for 1 minute. If the problem is not rectified after the product being plugged back in and powered then please call customer services.

Failure to heat may indicate the safety cut-out has operated. This cut-out only operates if the airflow is severely restricted so make sure the filter is clean, the air inlets and outlets at the front and back are not blocked. If the safety cut-out operates you should contact Product Care on 0345 208 8750.

If your machine does not work check the following before calling the customer service helpline:

- Check that the machine has the correct weight load in the drum before starting the appliance.
- Check that there is a supply of electricity or the machine is plugged in and the power switched on.
- Check that the door has been properly closed and the machine is switched on (start button pressed, if fitted).
- The child lock has not been activated.
- Check the fuse in the plug.

Note: if insufficient load is used the tumble dryer will switch to default drying mode which will take over 3 hours to dry. This is applicable to Extra and standard mode.



For Customer Services & Spare Parts please call **0345 208 8750**
Opening times: Monday - Friday 8am – 8pm & Saturday 9am – 1pm
or visit us at www.productcare.co.uk

Technical Specification

Brand	Russell Hobbs
Model number	RH3VTD400 (B) (S)
Type	Vented dryer
Efficiency rating	C
Capacity (KGs)	3
Dimensions (CMs):	(H)64.0 x (W)52.0 x (D)43.5

Product fiche

Energy consumption 252.0 kWh per year, based on 160 drying cycles of the standard cotton programme at full and partial load, and the consumption of the low-power modes. Actual energy consumption per cycle will depend on how the appliance is used.

Automatic or non-automatic: Automatic

Ecolabel: N/A Energy consumption of the standard cotton programme at full load: 2.10kWh

Energy consumption of the standard cotton programme at partial load: 1.10 kWh

Power consumption of the off-mode (Po): 0.43 W

Power consumption of the left-on mode (PI): 0.43 W

Duration of the left-on mode: 10 min

Standard programme ,which is the "standard programme" used at full and partial load ,is the standard drying programme to which the information in the label and the fiche relates, that this programme is suitable for drying normal wet cotton laundry and that it is the most efficient programme in terms of energy consumption for cotton.

Weighted programme time of the standard cotton programme at full and partial load:

110 min Programme time of the standard cotton programme at full load: 115 min

Programme time of the standard cotton programme at partial load: 60min

Sound power level for the standard cotton programme at full load: 65dB



For Customer Services & Spare Parts please call **0345 208 8750**
Opening times: Monday - Friday 8am – 8pm & Saturday 9am – 1pm
or visit us at www.productcare.co.uk

Connection to the mains supply

For UK use only – Plug fitting details (where applicable):

As the colours of the wires in the mains lead of this appliance may not correspond with the coloured markings identifying the terminals in your plug, proceed as follows:

The GREEN/YELLOW wire is the EARTH and must be connected to the terminal which is marked with the letter E or by the earth symbol or coloured GREEN or GREEN/YELLOW.

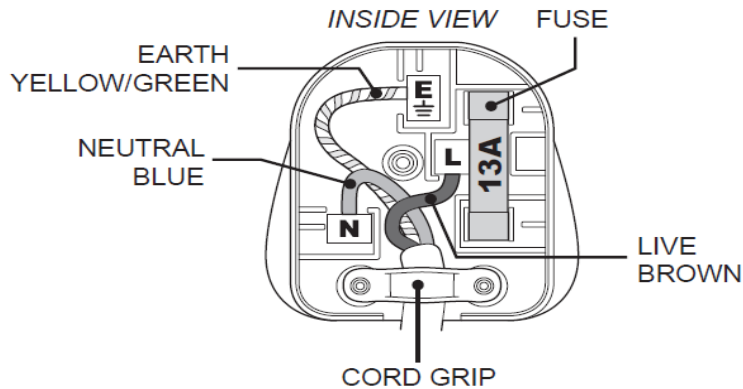
The BLUE wire is the NEUTRAL and must be connected to the terminal marked with the letter N or coloured BLACK. The BROWN wire is the LIVE wire and must be connected to the terminal marked with the letter L or coloured RED.

Always ensure that the plug cord grip is fastened correctly.

If a 13A (BS1363) fused plug is used it must be fitted with a 13amp fuse conforming to BS1362 and be BSI or ASTA approved.



DANGER
Electric
Shock Risk



 **Russell Hobbs**

For Customer Services & Spare Parts please call **0345 208 8750**
Opening times: Monday - Friday 8am – 8pm & Saturday 9am – 1pm
or visit us at www.productcare.co.uk

Guarantee

This product is guaranteed for 12 months from the date of the original purchase. If any defect arises due to faulty materials or workmanship the faulty product must be returned to the place of purchase.

Refund or replacement is at the discretion of the retailer.

The following conditions apply:

- The product must be returned to the retailer with the original proof of purchase.
- The product must be installed and used in accordance with the instructions contained in this instruction guide and any other instructions for use which are supplied.
- It must be used for domestic purposes only and for its intended use.
- This warranty does not cover wear and tear, damage, misuse or consumable parts.

This does not affect your statutory rights.

Produced for:

**G2S Limited,
Wigan,
WN2 4AY**



For Customer Services & Spare Parts please call **0345 208 8750**
Opening times: Monday - Friday 8am – 8pm & Saturday 9am – 1pm
or visit us at www.productcare.co.uk

Notes:



For Customer Services & Spare Parts please call **0345 208 8750**
Opening times: Monday - Friday 8am – 8pm & Saturday 9am – 1pm
or visit us at www.productcare.co.uk

For Customer Services &
Spare Parts please call

0345 208 8750

Opening times:

Monday – Friday

8am – 8pm

&

Saturday

9am – 1pm

or visit us at

www.productcare.co.uk



This symbol is known as the 'Crossed-out wheellie bin Symbol'. When this symbol is marked on a product/batteries, it means that the product/batteries should not be disposed of with your general household waste. Only discard electrical/electronic/battery items in separate collection schemes, which cater for the recovery and recycling of materials contained within. Your co-operation is vital to make sure the success of these schemes and for the protection of the environment. For your nearest disposal facility, visit www.recycle-more.co.uk or ask in store for details.

We reserve the right due to possible changes to design to alter the instruction manual without prior notice.

 **Russell Hobbs**

Revision 2