

This Owner's Manual is provided and hosted by [Appliance Factory Parts](#).



Broil-Mate 1164-54s Owner's Manual

[Shop genuine replacement parts for Broil-Mate
1164-54s](#)

The Broil-Mate logo consists of the word "BROIL-MATE" in a bold, black, sans-serif font. The letter "O" in "BROIL" is replaced by a red circle containing a white flame icon.

[Find Your Broil-Mate Grill Parts - Select From 682 Models](#)

----- Manual continues below part list -----

Available Replacement Parts for Broil-Mate 1164-54s

91122GC	GP GRID CAST IRON 2PC Set
10222-E34	HEAT TENT 340/400 SS

BROIL-MATE™

ASSEMBLY MANUAL & PARTS LIST

MANUEL DE MONTAGE & LISTE DE PIÈCES

broil-mate™
1164-54B
1164-57B



broil-mate™
1164-54S
1164-57S



RETAIN FOR FUTURE REFERENCE

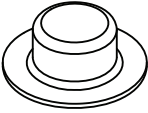
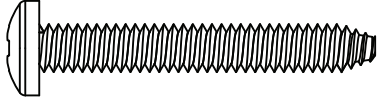
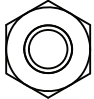
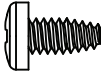
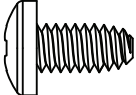
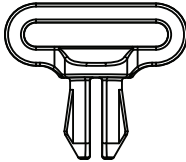
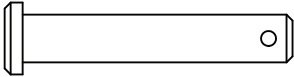
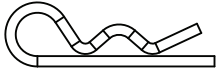
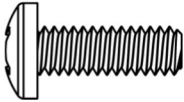
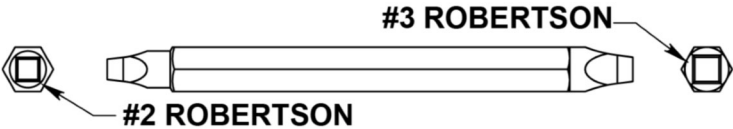
VEUILLEZ CONSERVER POUR REFERENCE ULTERIEURE

Onward
SINCE 1906
MANUFACTURING COMPANY LIMITED
585 KUMPF DRIVE
WATERLOO, ONTARIO, CANADA
N2V 1K3

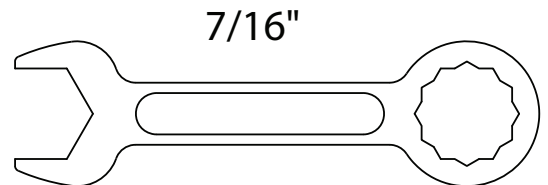
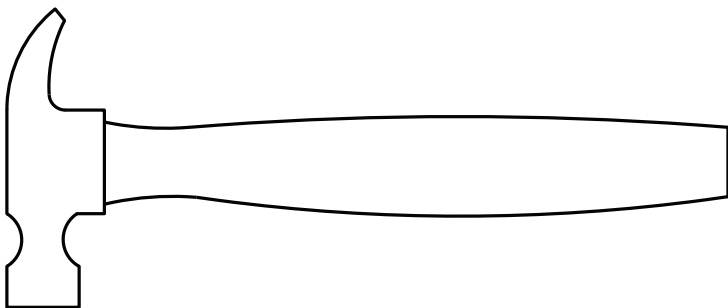
info@omcbbq.com
1-800-265-2150

S18447 REV A 11/18

HARDWARE INCLUDED / MATERIAL INCLUS / EQUIPOS INCLUIDO

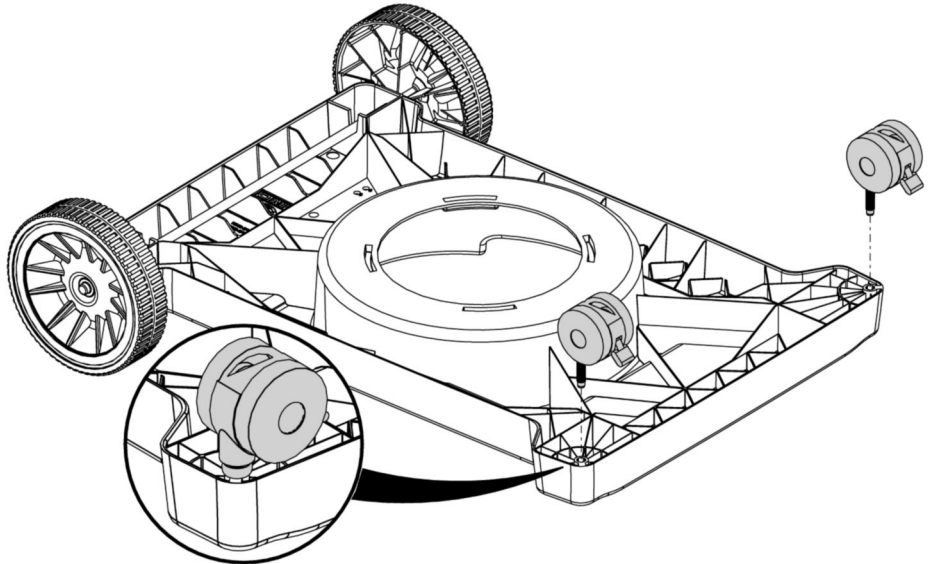
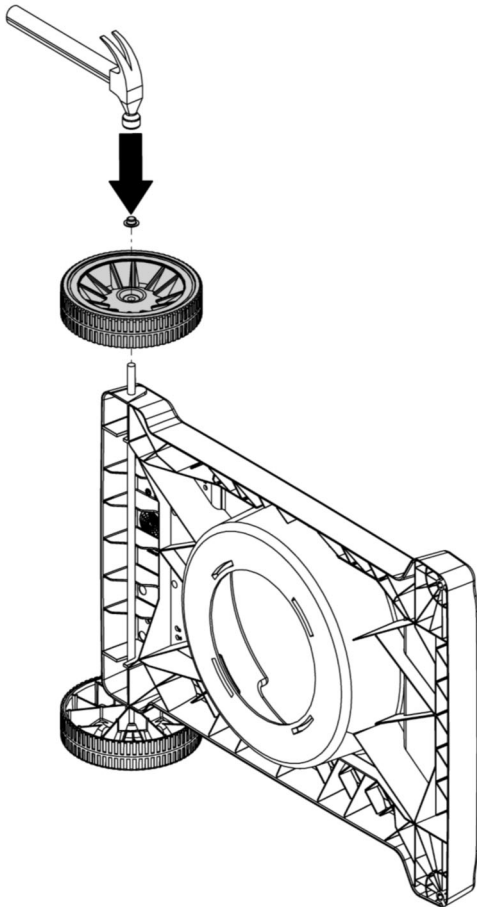
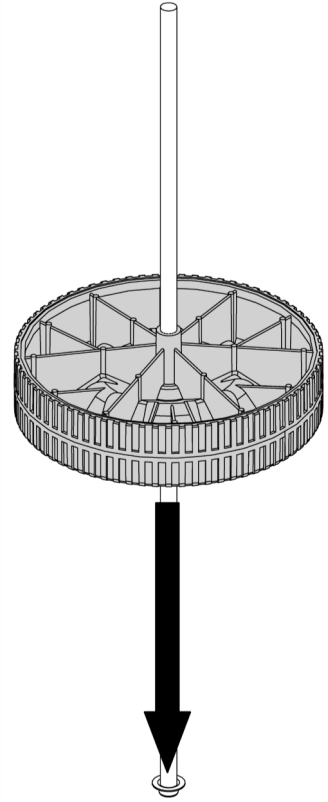
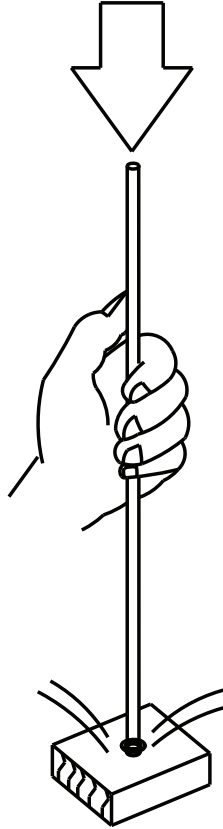
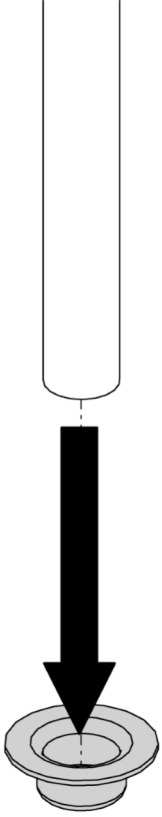
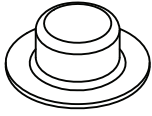
S21420		X2	Y-11561		X4
Y-11793		X2	Y-29304		X2
Y-12865		X6	Y-12673		X2
10240-15		X2	S21233		X2
Y-12310		X2	 <p>#3 ROBERTSON</p> <p>#2 ROBERTSON</p>		

TOOLS REQUIRED / OUTILS NECESSAIRES / HERRAMIENTAS NECESARIAS

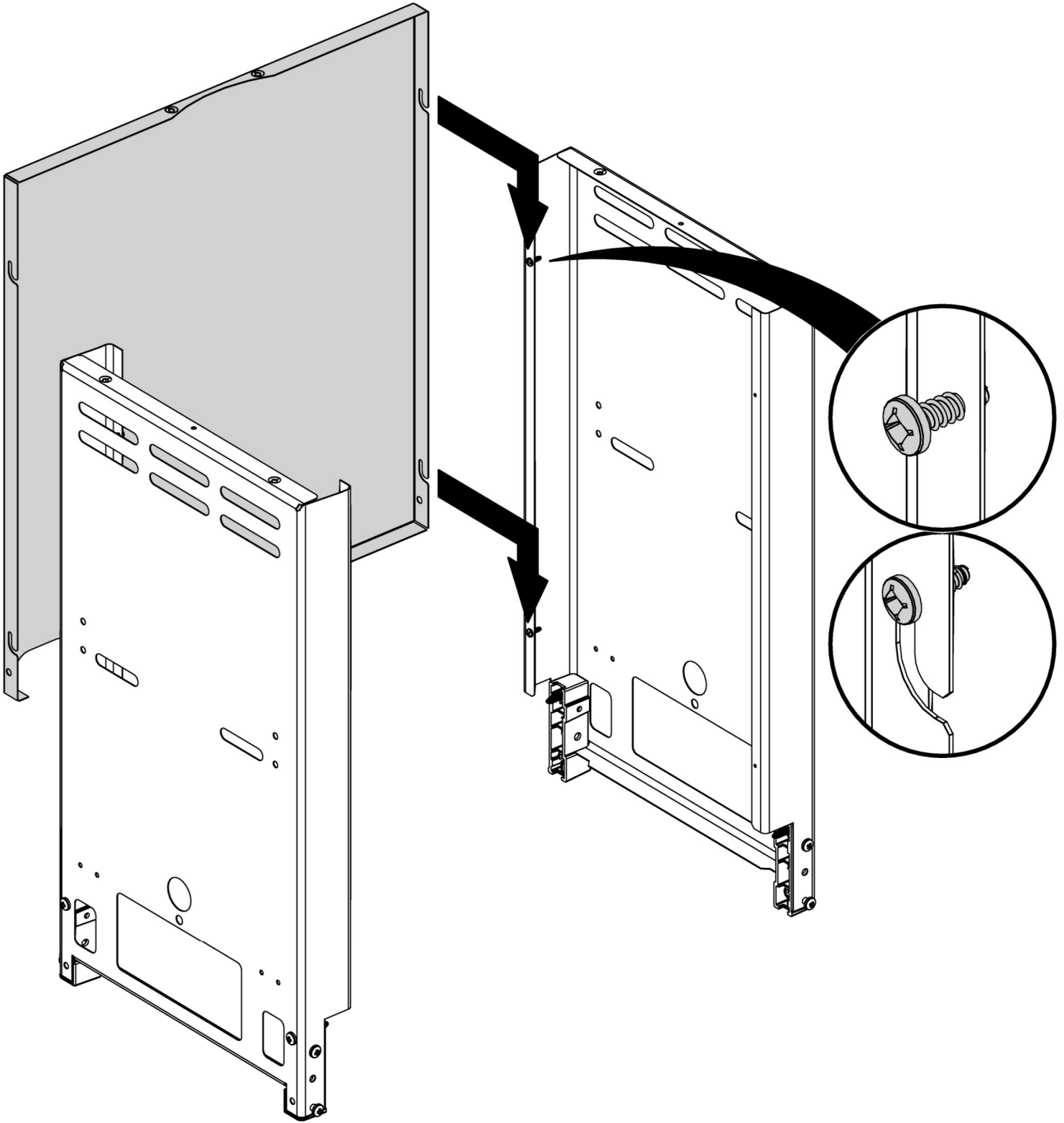


1

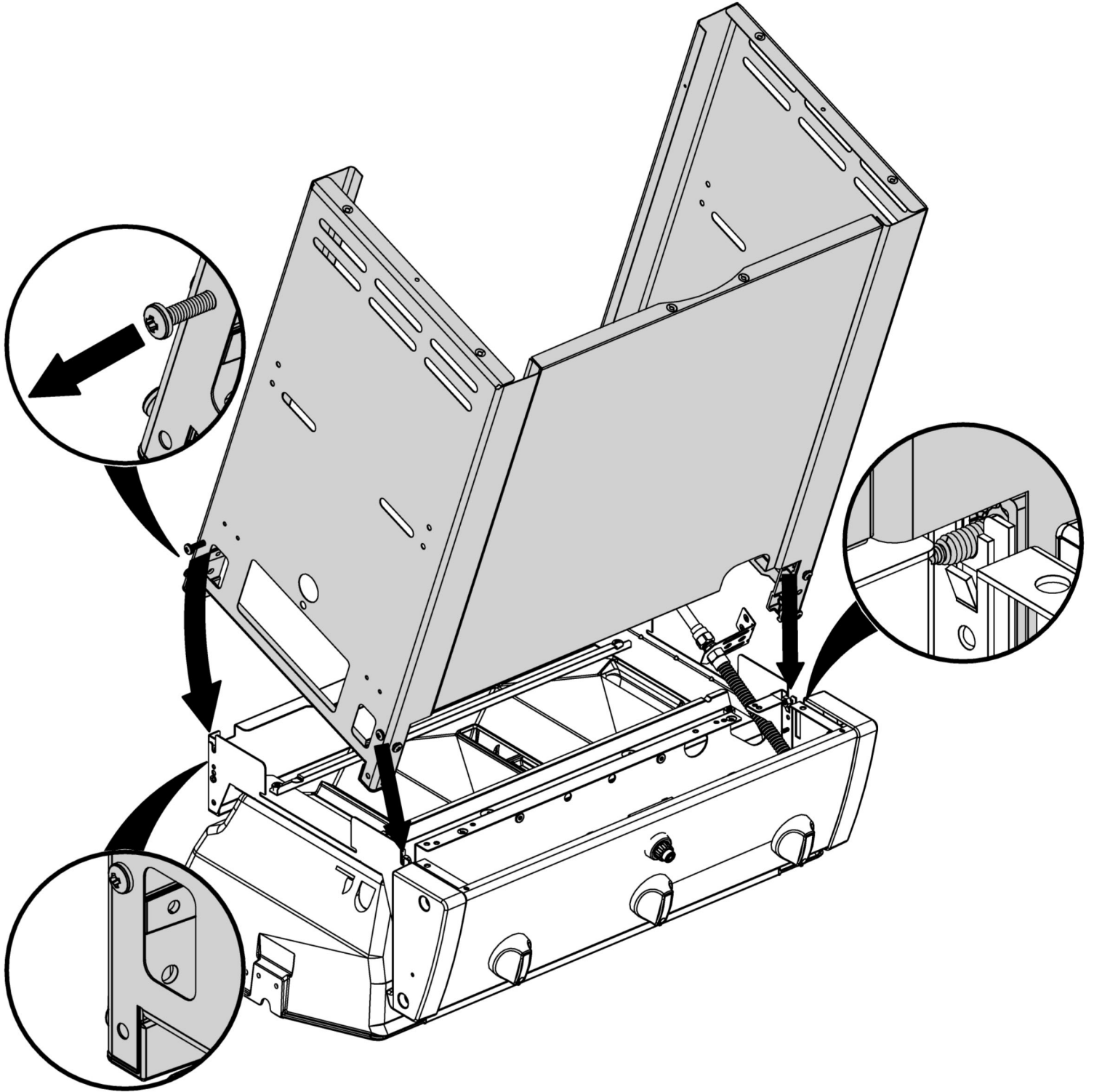
(2)



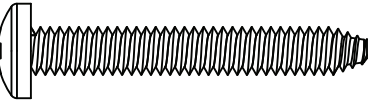

2

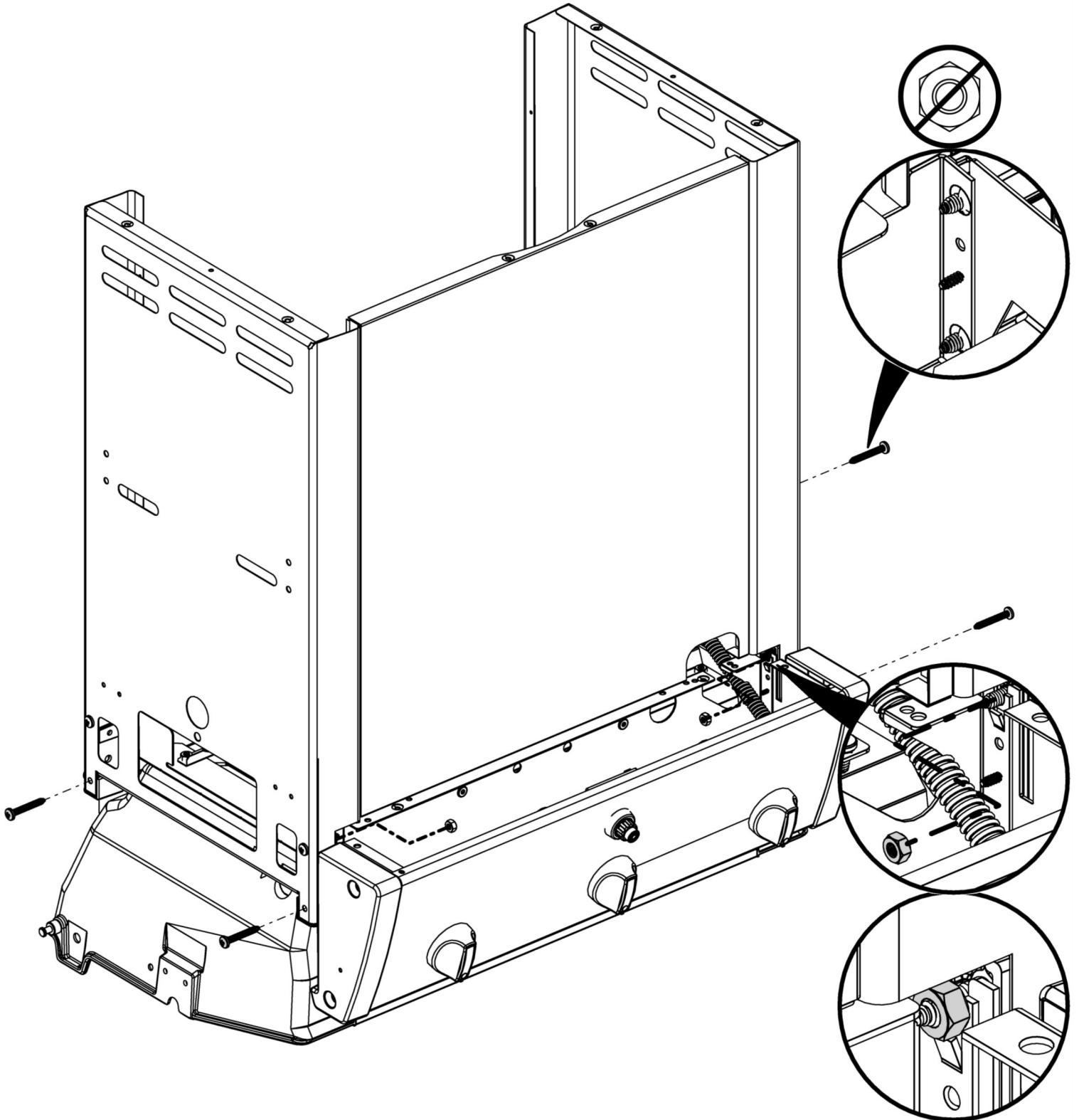


3

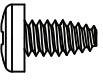


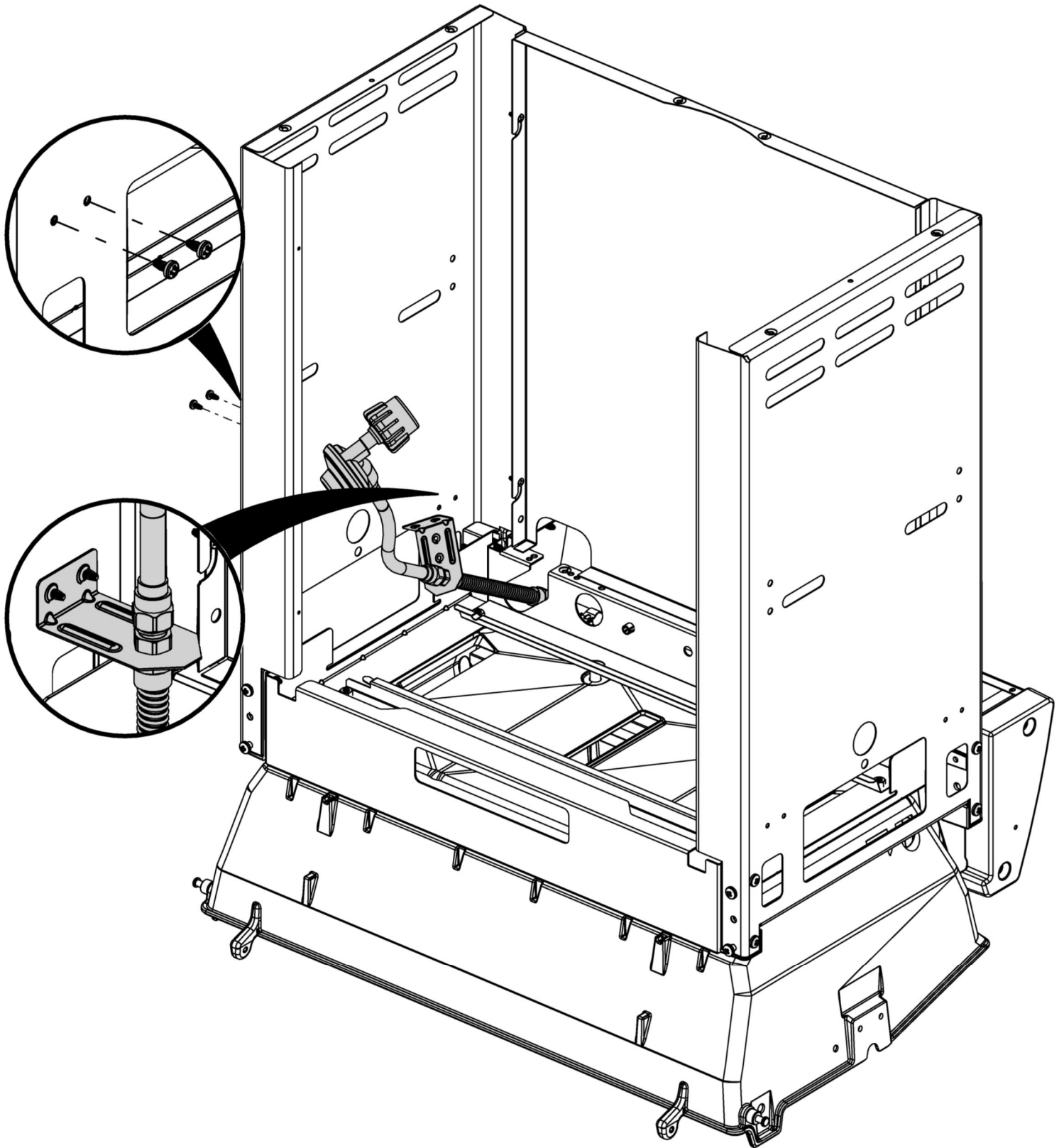
4

(4)  (2) 

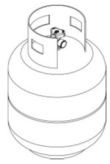


5

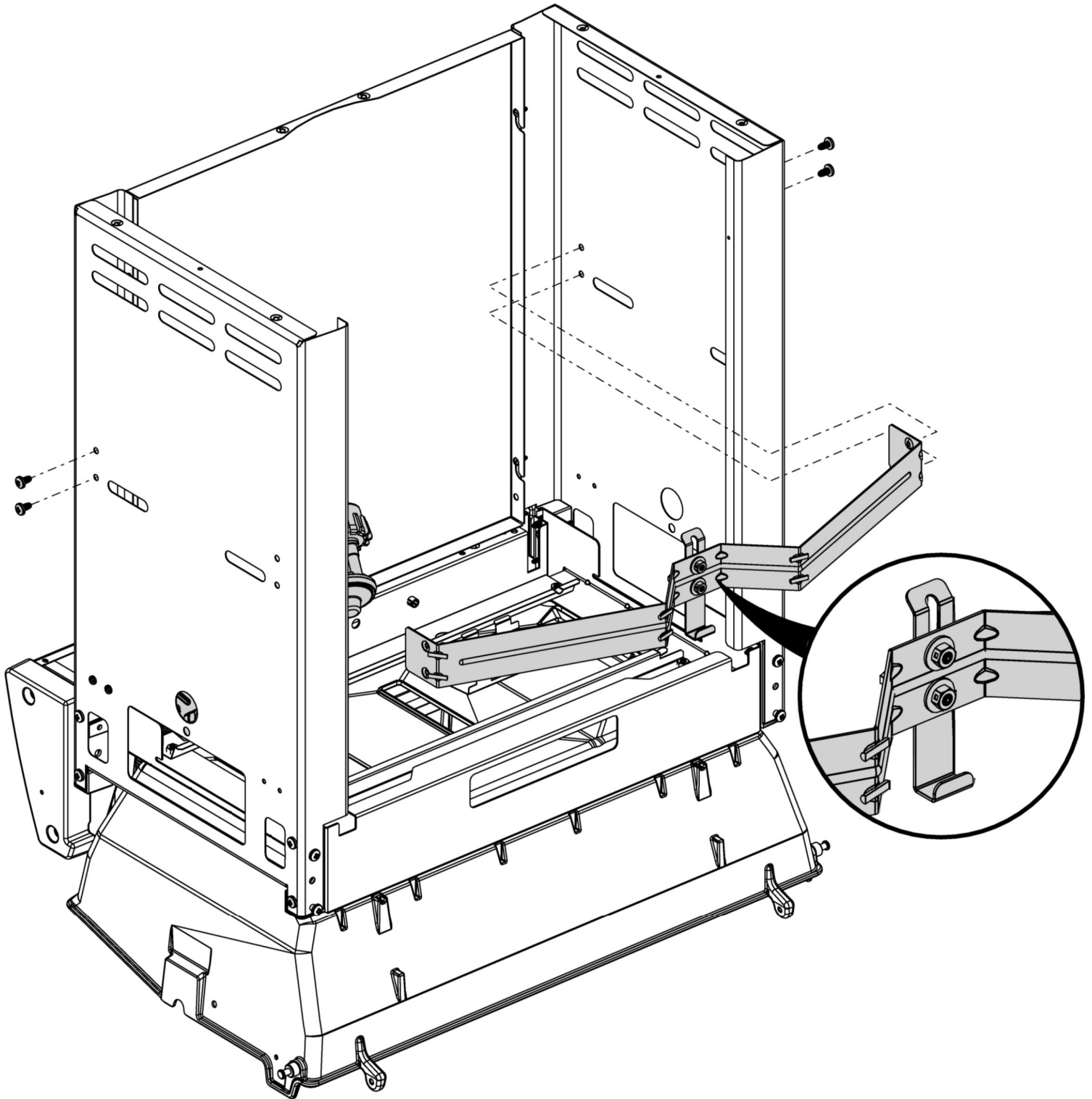
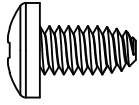
(2) 



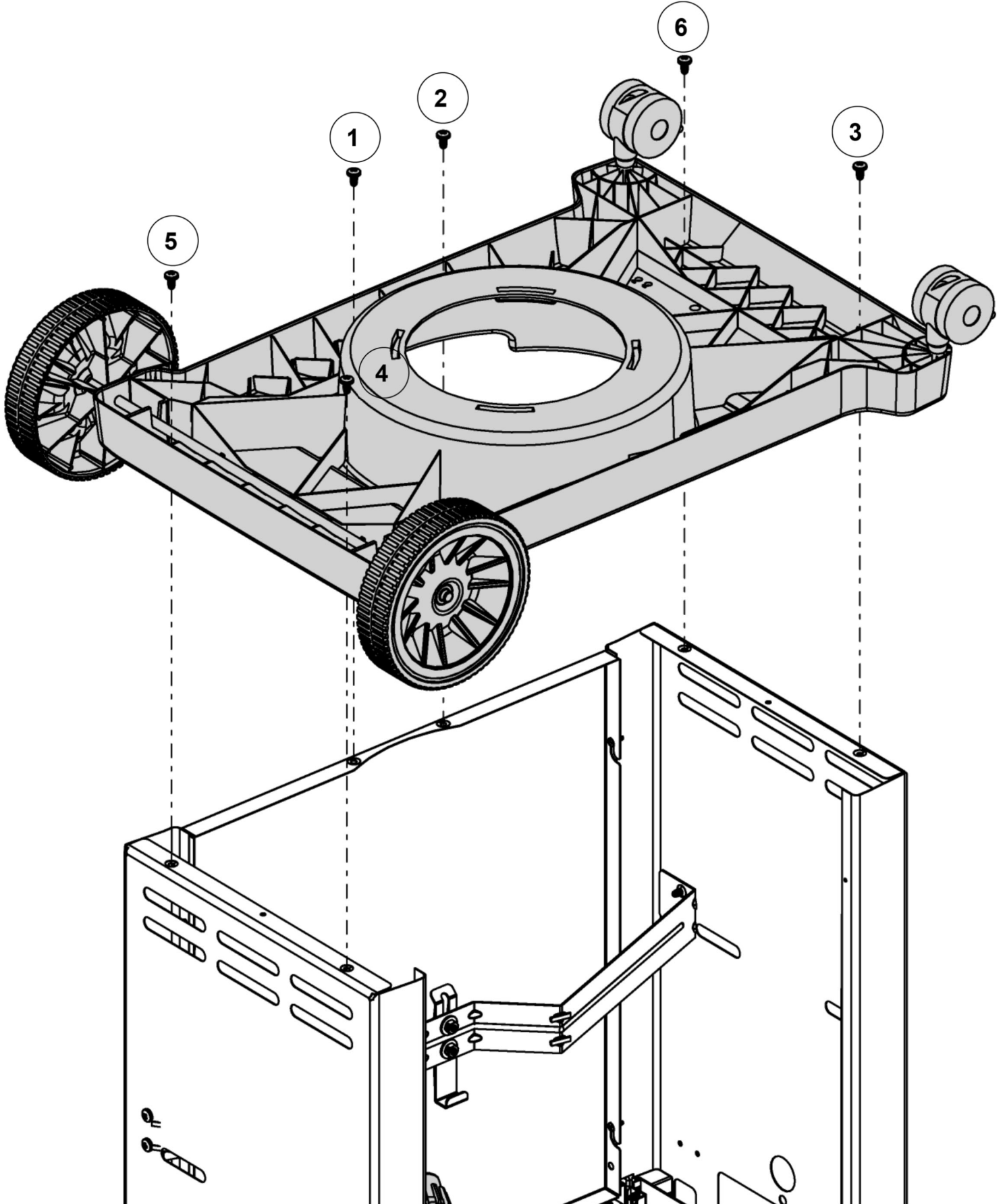
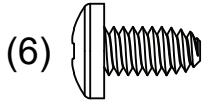
6



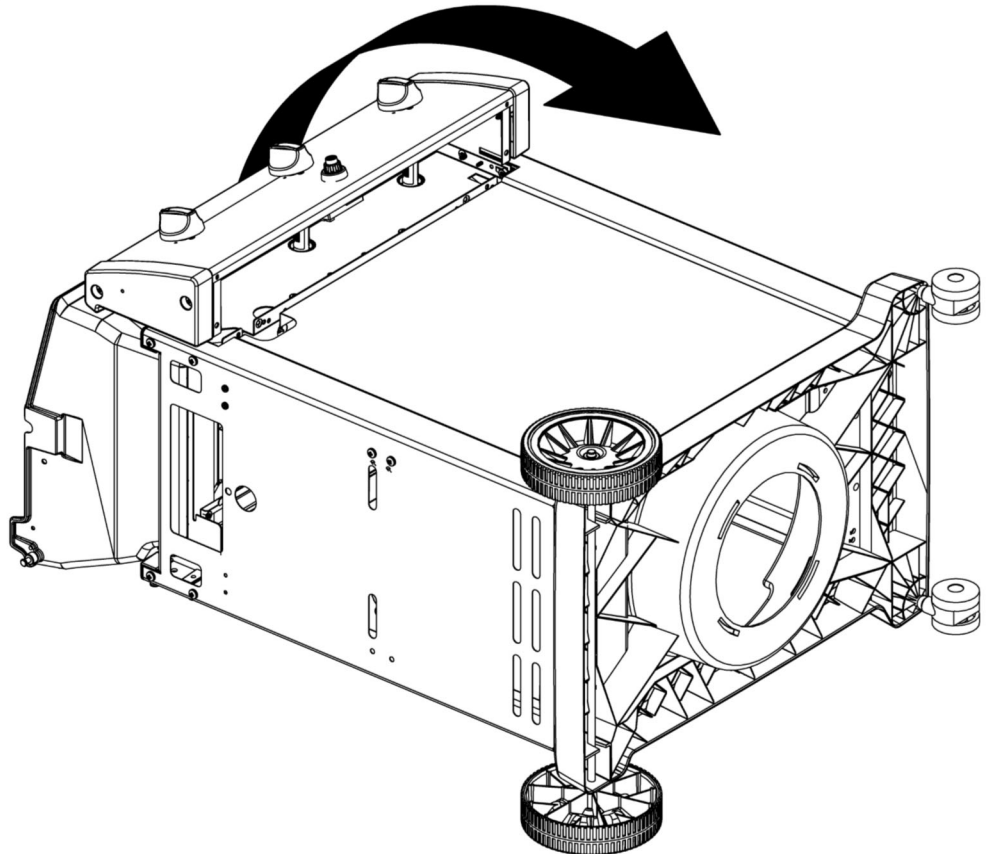
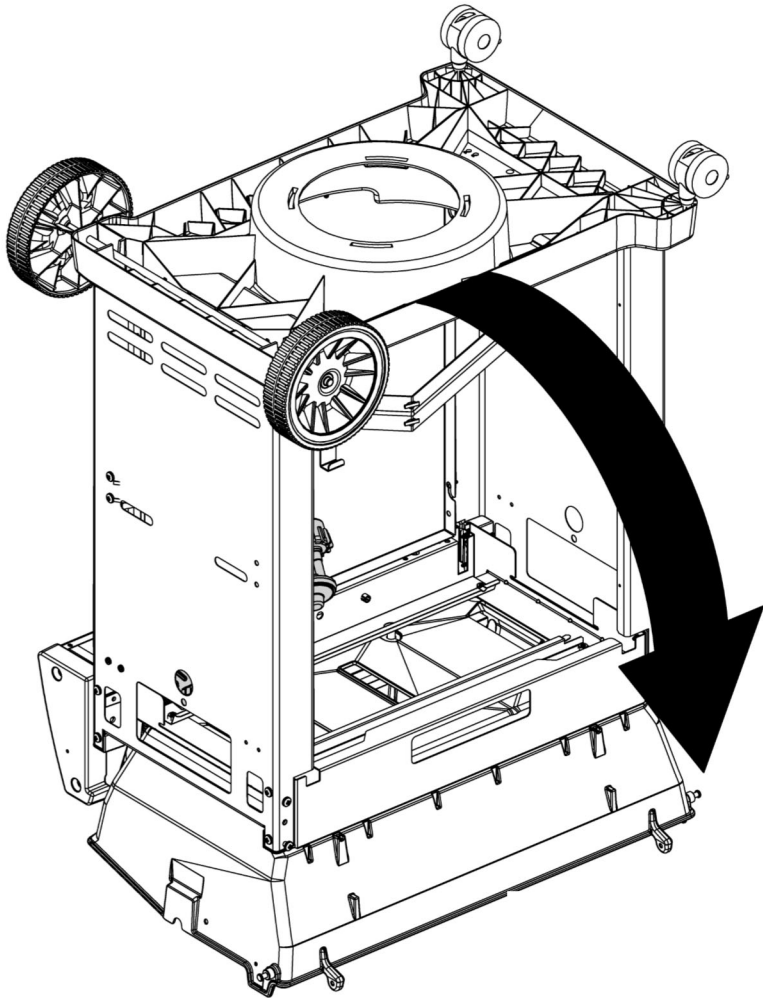
(4)



7

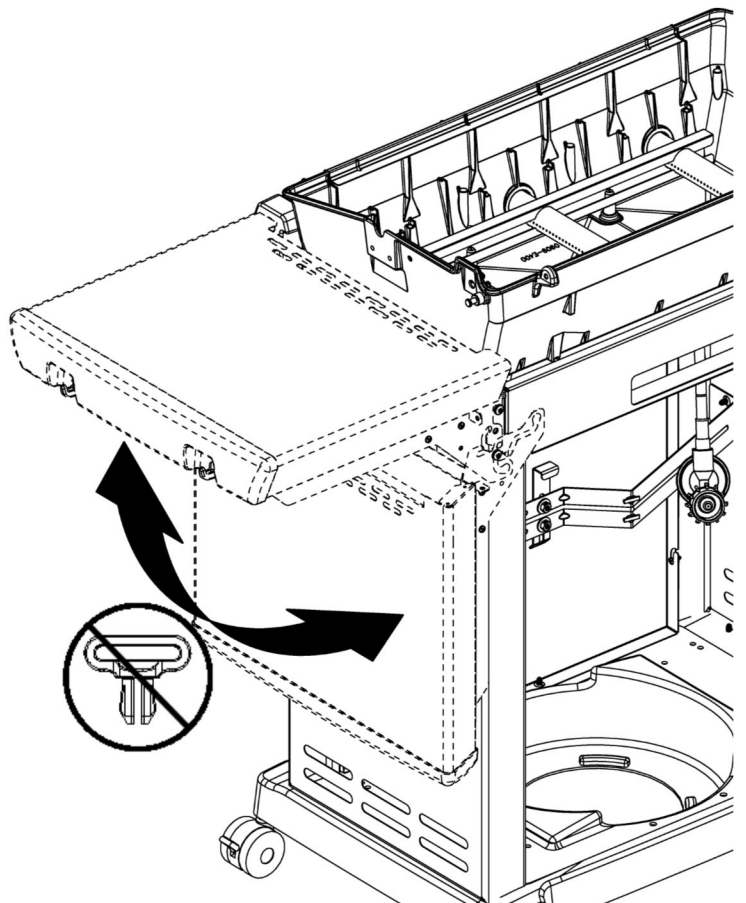
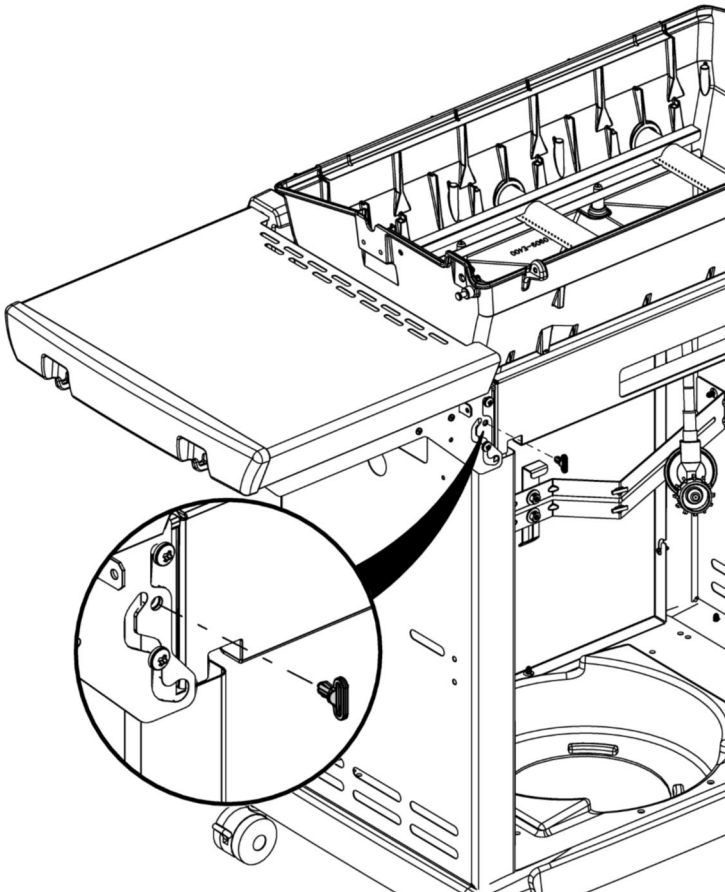
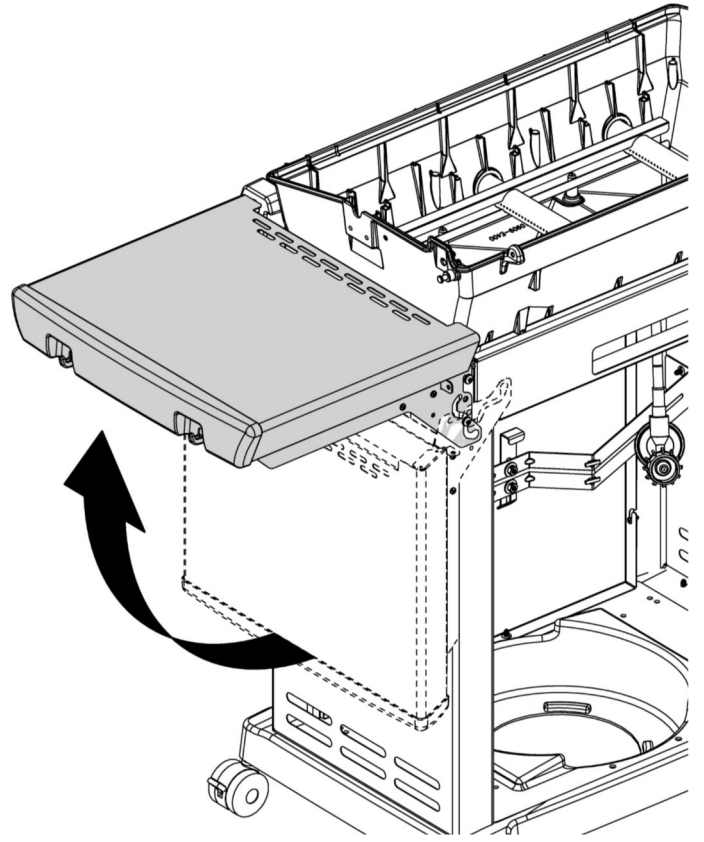
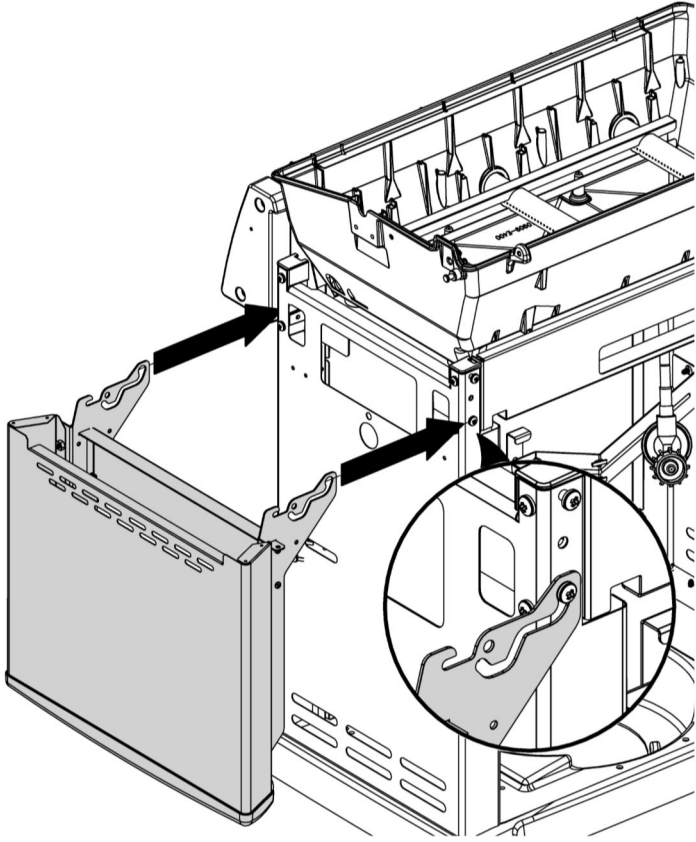
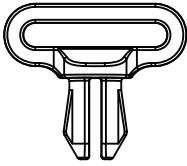


8

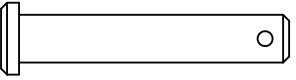
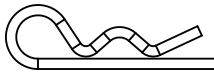


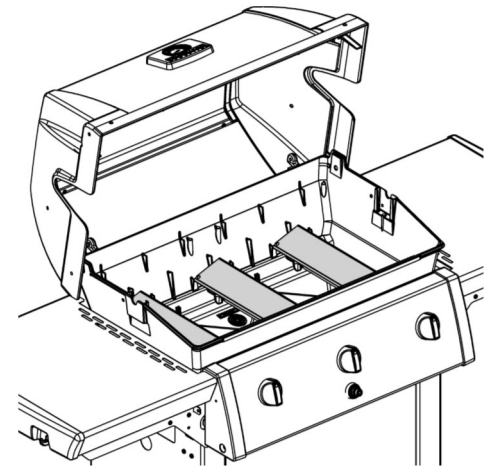
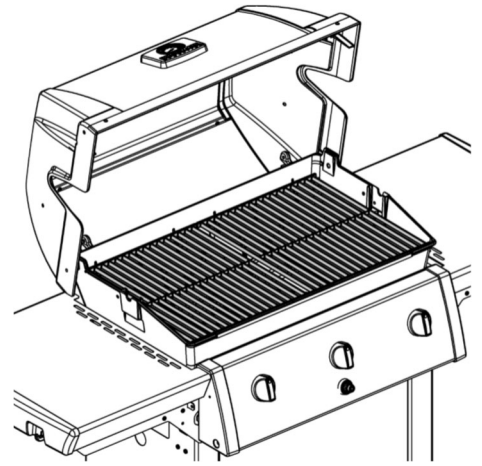
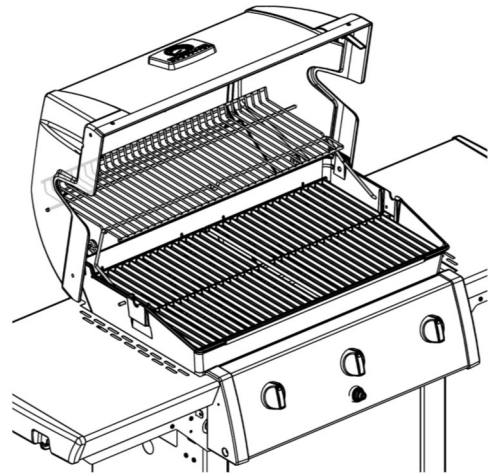
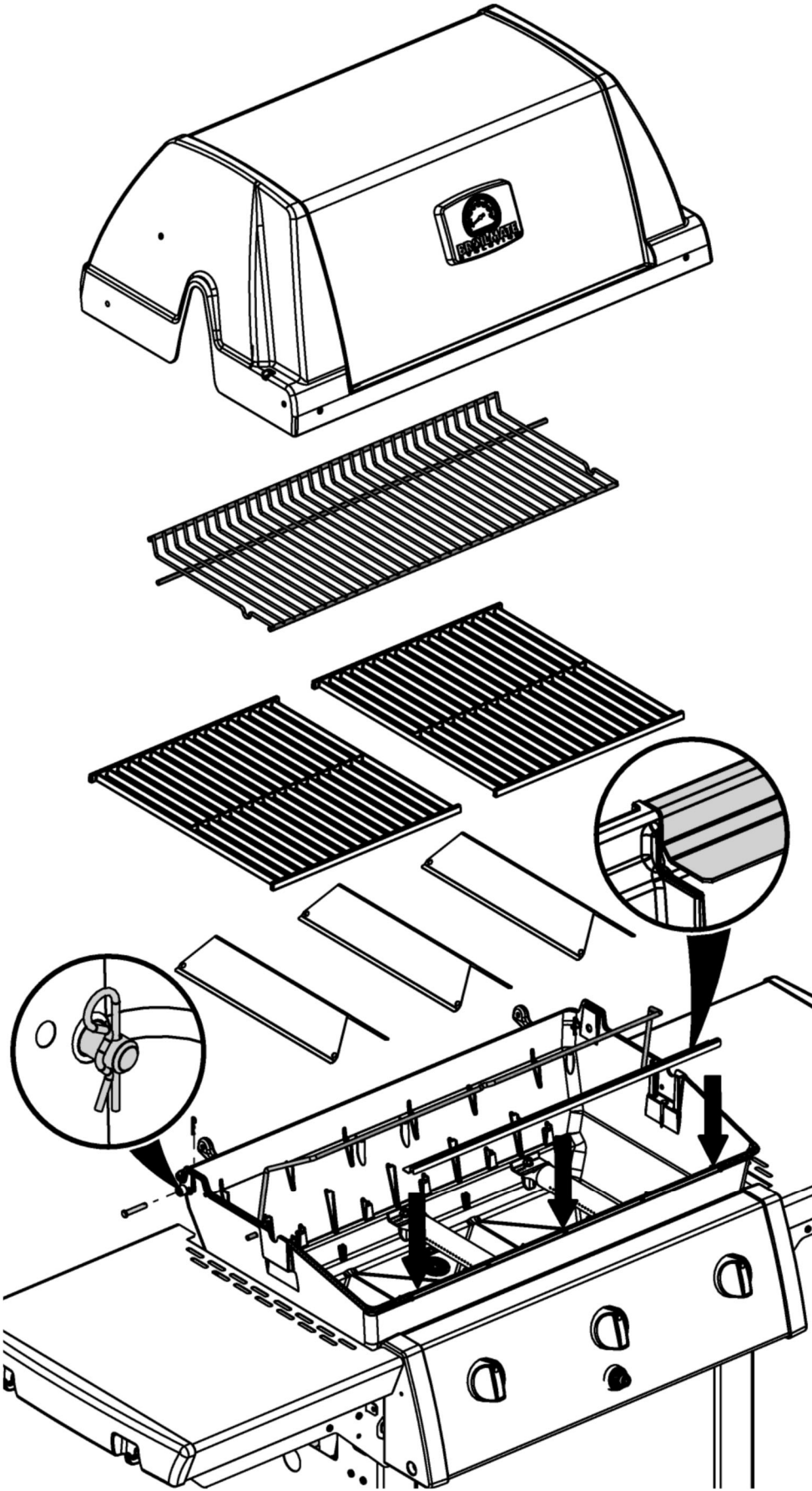
9

(2)

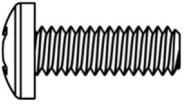


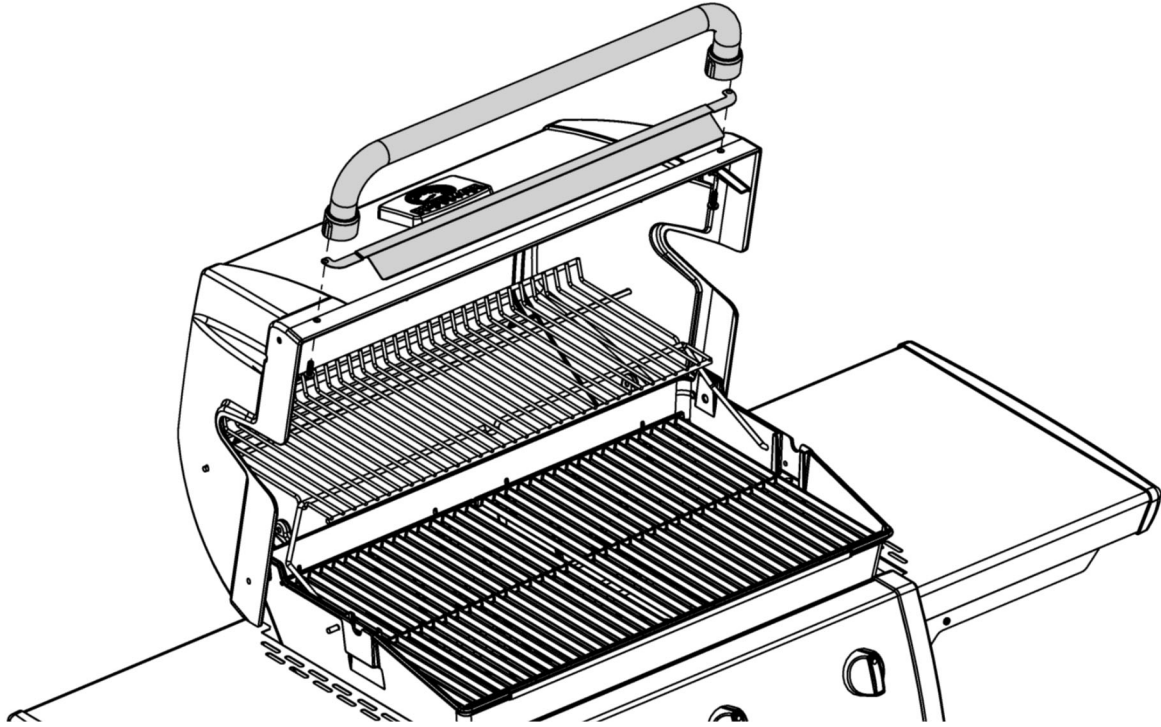
10

(2)  (2) 

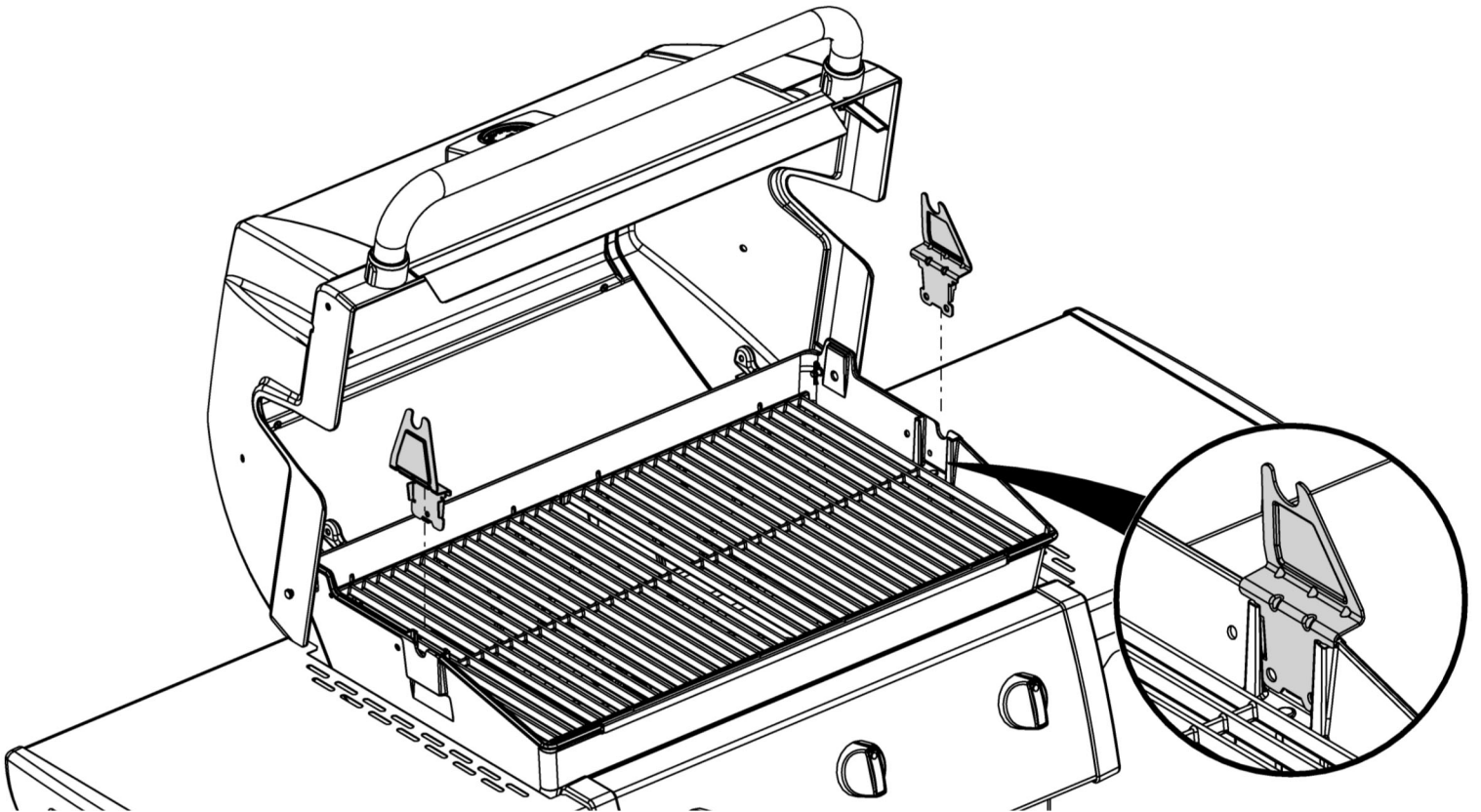


11

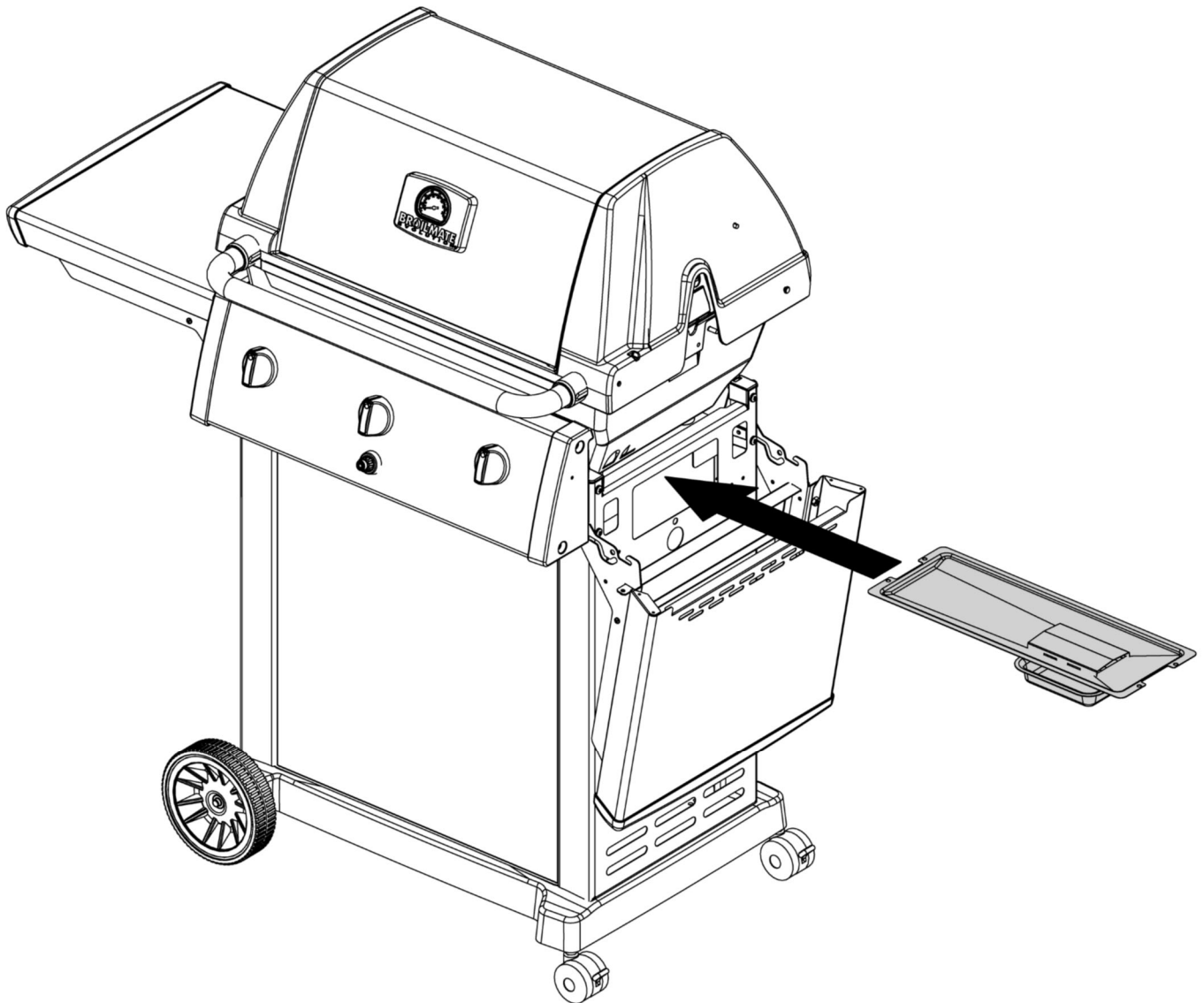
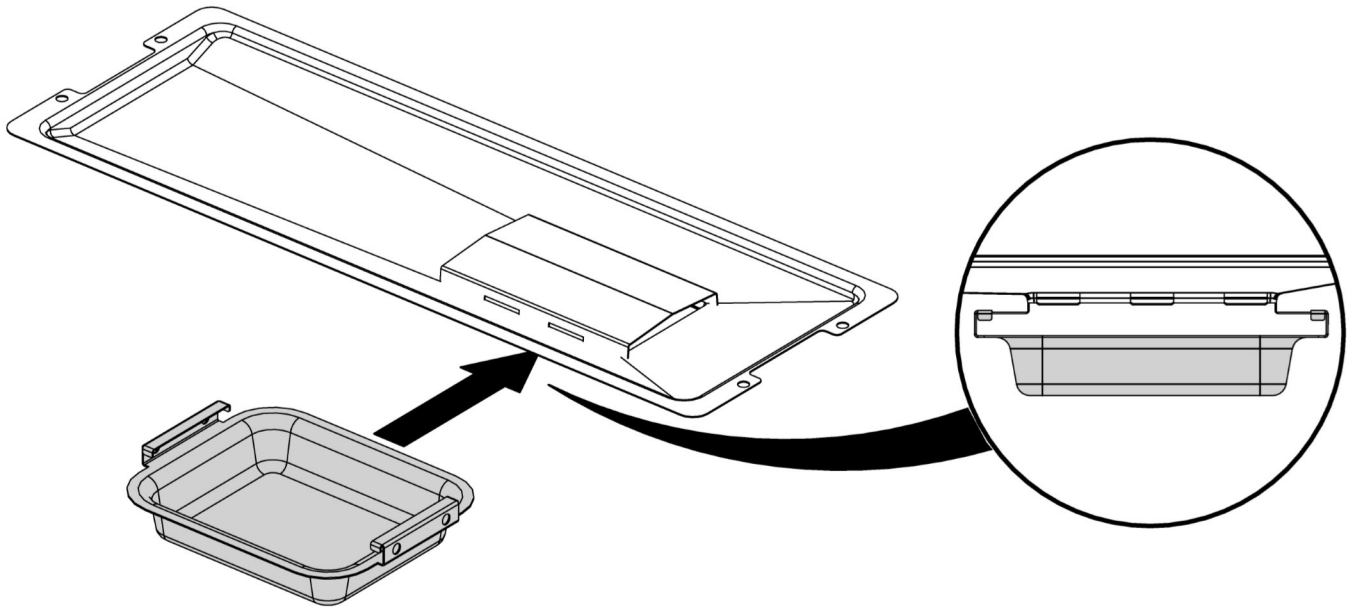
(2) 



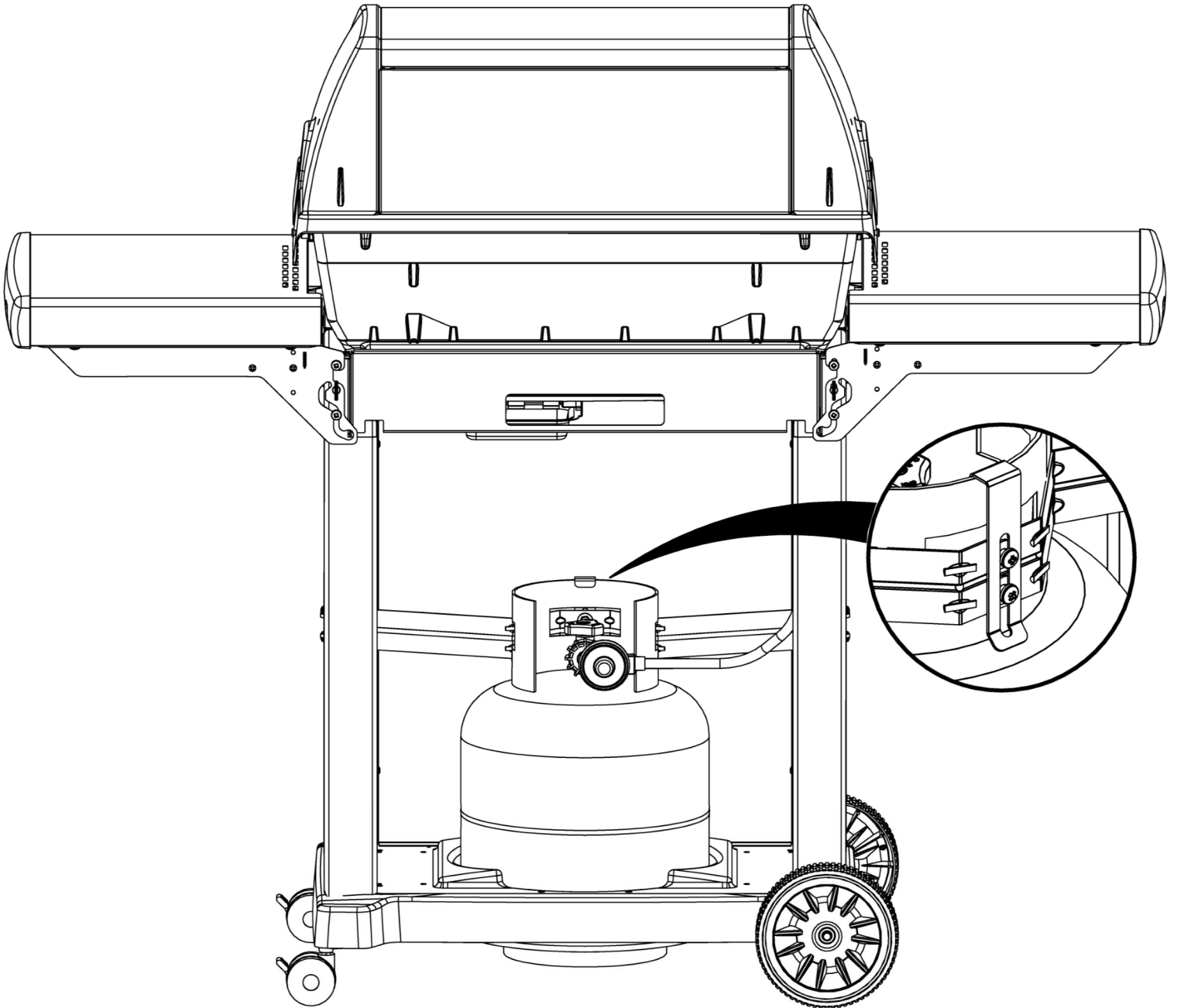
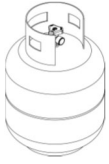
12

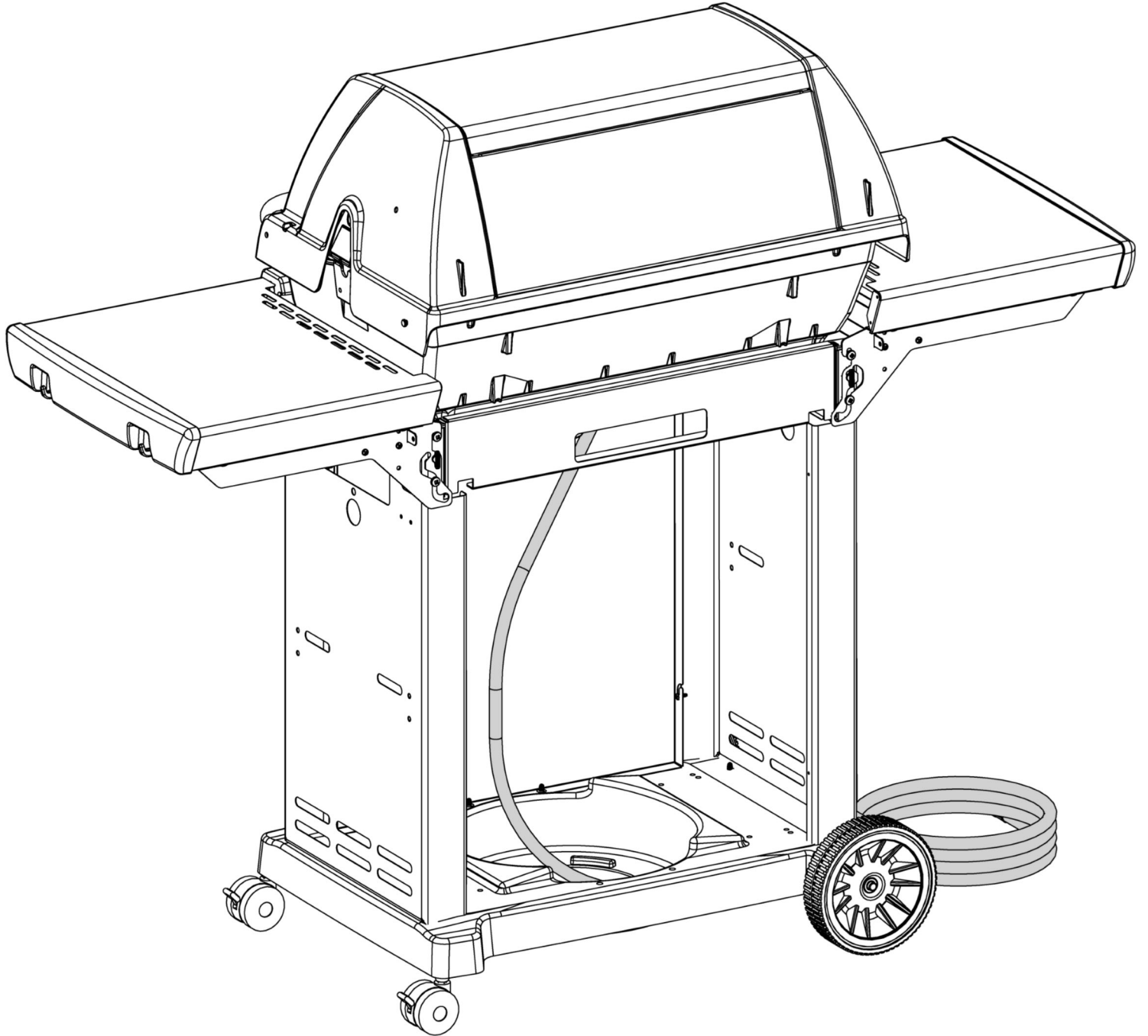


13



14





PARTS LIST / LISTE DES PIECES

1164-54B 1164-57B 1164-54S 1164-57S

<u>KEY #</u>	<u>ITEM #</u>	<u>DESCRIPTION</u>	<u>DESCRIPTION</u>					
1	10909-E401	CASTING BOTTOM	FOND DU FOYER	1	1	1	1	1
2	10473-E392	CASTING TOP	COUVERCLE DU GRIL	1	1	1	1	1
3	10081-69BM	NAMEPLATE	PLAQUE D'IDENTIFICATION	1	1	1	1	1
4	10958-E400A	TOP CASTING INSERT	PANNEAU DE COUVERCLE	•	•	1	1	1
5	10958-E401A	TOP CASTING INSERT	PANNEAU DE COUVERCLE	1	1	1	•	•
6	10571-6	HEAT INDICATOR	INDICATEUR DE CHALEUR	1	1	1	1	1
6	10240-15	HINGE PIN	GOUPILLE DE CHARNIÈRE	2	2	2	2	2
6A	S21237	HINGE SPACER	ENTRETOISE DE CHARNIÈRE	2	2	2	2	2
7	S21233	HITCH PIN CLIP	ATTACHE DE CHEVILLE	2	2	2	2	2
9	38170121	GRID	GRILLE	2	2	2	2	2
10	10222-E34	HEAT TENT	DÉFLECTEUR	3	3	3	3	3
11	10225-E390	GRID - WARMING RACK	GRILLE	1	1	1	1	1
13	10184-R83	BOSS EXTENSION	CROCHET DE RALLONGEMENT	1	1	1	1	1
15	52904-E400LP	BURNER	BRÛLEUR	3	•	3	•	•
	52904-E400NG	BURNER	BRÛLEUR	•	•	3	•	3
17	10342-245	ELECTRONIC IGNITOR	ALLUMEUR ÉLECTRONIQUE	1	1	1	1	1
18	10342-E12	ELECTRODE	ELECTRODE	2	2	2	2	2
19	10366-664A	COLLECTOR BOX	BOÎTE DE COLLECTEUR	1	1	1	1	1
20	10111-16A	HOSE	TUYAU	1	1	1	1	1
21	10444-E30	CONTROL ASSEMBLY - LP	ASSEMBLÉE DE CONTROLE	1	•	1	•	•
	10444-E31	CONTROL ASSEMBLY - NG	ASSEMBLÉE DE CONTROLE	•	•	1	•	1
22	10114-16	HOSE & REGULATOR LP	TUYAU ET REGULATEUR PL	1	•	1	•	•
	10111-K45	HOSE NATURAL GAS	TUYAU (GAZ NATUREL)	•	•	1	•	1
23	10472-K431	CONTROL KNOB	BOUTON DE CONTROLE	3	3	3	3	3
30	10194-E43	CONTROL COVER	PANNEAU DE CONTROLE	•	•	1	•	1
	10194-E731M	CONTROL COVER	PANNEAU DE CONTROLE	1	1	1	•	•
31	10711-E34	EDGE CAP	PAC DE BORD	1	1	1	1	1
32	10711-E33	EDGE CAP	PAC DE BORD	1	1	1	1	1
33	10184-F96	RADIATION SHIELD	ÉCRAN DE CHALEUR	1	1	1	1	1
34	10184-F97	GREASE RAIL	GUIDE DU BAC A GRAISSE	1	1	1	1	1
35	10184-E501	SUPPORT-CASTING-LEFT	SUPPORT GAUCHE DU FOYER	1	1	1	1	1
36	10184-E511	SUPPORT-CASTING-RIGHT	SUPPORT DROIT DU FOYER	1	1	1	1	1
37	10184-E651	SUPPORT-SIDE SHELF-LEFT	SUPPORT TABLETTE DE GAUCHE	2	2	2	2	2
37A	10184-E63	SUPPORT-SIDE SHELF-LEFT	SUPPORT TABLETTE DE GAUCHE	2	2	2	2	2
38	10184-E641	SUPPORT-SIDE SHELF-RIGHT	SUPPORT TABLETTE DE DROIT	2	2	2	2	2
38A	10184-E62	SUPPORT-SIDE SHELF-RIGHT	SUPPORT TABLETTE DE DROIT	2	2	2	2	2
39	10956-E881	BRACE-REAR	SUPPORT ARRIERE	1	1	1	1	1
40	10958-E73	BASE	TABLETTE INFERIEURE	1	1	1	1	1
			BASE	1	1	1	1	1

PARTS LIST / LISTE DES PIECES

1164-54B 1164-57B 1164-54S 1164-57S

<u>KEY #</u>	<u>ITEM #</u>	<u>DESCRIPTION</u>	<u>DESCRIPTION</u>						
41	10956-E591	BRACE-FRONT	SUPPORT AVANT	1	1	1	1	1	1
42	10958-E351	FRONT PANEL	PANNEAU AVANT	1	1	1	1	1	1
	10958-E354	FRONT PANEL	PANNEAU AVANT	•	•	•	•	•	•
43	10958-E761	SIDE PANEL	PANNEAU LATERALE	2	2	2	2	2	2
48	10184-E691	BRACKET - SHELF	CROCHET - PLANCHETTE	2	2	2	2	2	2
50	10711-E821	SHELF	PLANCHETTE	2	2	2	2	2	2
56	10892-7G	WHEEL	ROUE	2	2	2	2	2	2
60	10711-E49	END CAP - SHELF - RIGHT	MONTURE D'EMBOUT	2	2	2	2	2	2
72	S21420	PUSH NUT	POUSSE ECROU	2	2	2	2	2	2
74	S21084	SCREW #14 X 5/8	VIS #14 X 5/8	3	3	3	3	3	3
75	24005-12AB	HANDLE	POIGNÉE	1	1	1	1	1	1
76	S21255	WASHER	RONDELLE	4	•	•	•	•	•
78	10892-13	CASTOR	ROULETTES	2	2	2	2	2	2
79	Y-11561	BOLT - 1/4-20 x 1 3/4	BOULON - 1/4-20 X 1 3/4	8	8	8	8	8	8
80	Y-11546	SCREW- 1/4-20 X 5/8	VIS - 1/4-20 X 5/8	10	6	10	6	10	6
81	Y-12860	SCREW - 1/4-20 X 1 3/8	VIS - 1/4-20 X 1 3/8	4	4	4	4	4	4
82	Y-12673	SHELF - LOCK PIN	ÉTAGÈRE - GOUPILLE DE SERRURE	2	2	2	2	2	2
83	Y-12865	BOLT- 1/4-20 X 3/4	BOULON - 1/4-20 X 3/4	10	6	10	6	10	6
84	S15170	AXLE	ESSIEU	1	1	1	1	1	1
85	Y-12855	BOLT- 1/4-20 X 3/8	BOULON - 1/4-20 X 3/8	8	8	8	8	8	8
86	10184-E12	HANDLE SHEILD	ÉCRAN - POIGNÉE	1	1	1	1	1	1
87	Y-11793	NUT- 1/4-20	ECROU - 1/4-20	14	14	14	14	14	14
96	S21125	SCREW - 8 X 1/2	VIS - 8 X 1/2	4	4	4	4	4	4
97	Y-11545	SCREW 1/4-20 X 1 3/8	VIS 1/4-20 X 1 3/8	4	4	4	4	4	4
98	S21124	SCREW - 8 X 1/2	VIS - 8 X 1/2	33	33	33	33	33	33
115	Y-29304	SCREW #10-24 X 3/8	VIS #10-24 X 3/8	2	2	2	2	2	2
122	57054-901	GREASE TRAY	PLATEAU A GRAISSE	1	1	1	1	1	1
123	52009-901	GREASE PAN	CUVETTE A GRAISSE	1	1	1	1	1	1
124	52049-91	SHIELD - GREASE TRAY	ÉCRAN	1	1	1	1	1	1
135	Y-12119	HEYCO BUSHING	DOUILLE DE HEYCO	2	2	2	2	2	2
137	10184-E43	ROTISSERIE SHIELD	BOUCLIER DE ROTISSERIE	1	1	1	1	1	1
138	10184-E44	ROTISSERIE SHIELD	BOUCLIER DE ROTISSERIE	1	1	1	1	1	1
150	10184-E211	TANK CLAMP	PINCE-CITERNES	1	•	•	•	•	•
151	10184-E201	TANK STRAP	SANGLE RÉSERVOIR	1	•	•	•	•	•
154	Y-11795	LOCK NUT	CROU DE BLOCAGE	2	•	•	•	•	•
156	Y-12310	SCREW 1/4-20 X 3/4	VIS 1/4-20 X 3/4	2	2	2	2	2	2
			ABRAZADERA-FRONTAL						
			PANEL FRONTAL						
			PANEL FRONTAL						
			PANEL LATERAL						
			SOPORTE PARA ESTANTE						
			ESTANTE						
			RUEDA						
			TAPA DEL EXTREMO						
			TUERCA DE COMPRESIÓN						
			TORNILLO #14 X 5/8						
			MANGO						
			ARANDELA						
			RUEDITA						
			PERNO - 1/4-20 x 1 3/4						
			TORNILLO - 1/4-20 X 5/8						
			TORNILLO - 1/4-20 X 1 3/8						
			ESTANTE - CLAVIJA DE TRABA						
			PERNO - 1/4-20 X 3/4						
			EJE						
			PERNO - 1/4-20 X 3/8						
			PROTECCIÓN - MANGO						
			TUERCA - 1/4-20						
			TORNILLO - 8 X 1/2						
			TORNILLO 1/4-20 X 1 3/8						
			TORNILLO - 8 X 1/2						
			TORNILLO #10-24 X 3/8						
			BANDEJA RECOLECTORA DE GRASA						
			BANDEJA PARA LA GRASA						
			PROTECCIÓN						
			COJINETE HEYCO						
			CUBIERTA DEL ROSTIZADOR						
			CUBIERTA DEL ROSTIZADOR						
			PINZA PARA TANQUE						
			CORREA PARA TANQUE						
			TUERCA DE SEGURIDAD						
			TORNILLO 1/4-20 X 3/4						

