

This Owner's Manual is provided and hosted by [Appliance Factory Parts](#).



Charbroil 461732103 Owner's Manual

[Shop genuine replacement parts for Charbroil
461732103](#)



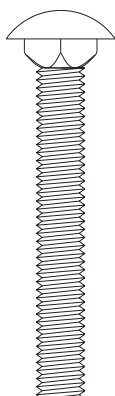
[Find Your Charbroil Grill Parts - Select From 3592 Models](#)

----- Manual continues below -----

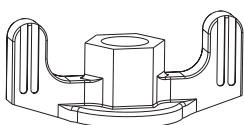
1

Items to Assemble:

- 2 Leg Assemblies
- 1 Bottom Shelf
- 6 carriage Bolts
- 6 Wing Nuts



Qty: 6

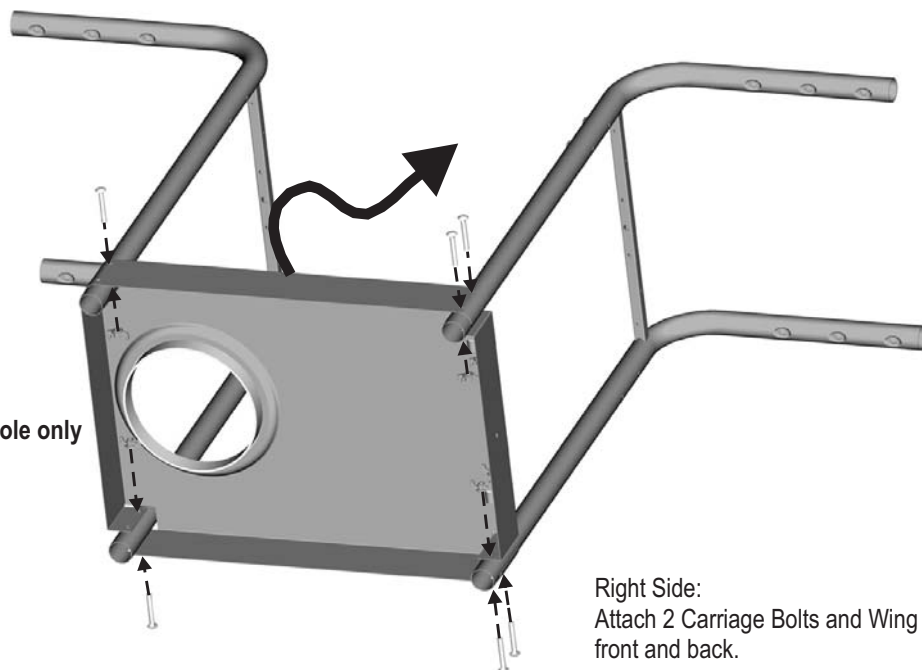


Qty: 6

Left Side:
Place 1 Carriage Bolt
and Wing Nut in **upper hole only**

Place Bottom Shelf and Legs as shown.

After assembling tighten all Wing Nuts.



Right Side:
Attach 2 Carriage Bolts and Wing Nuts in
front and back.

4

Items to Assemble:

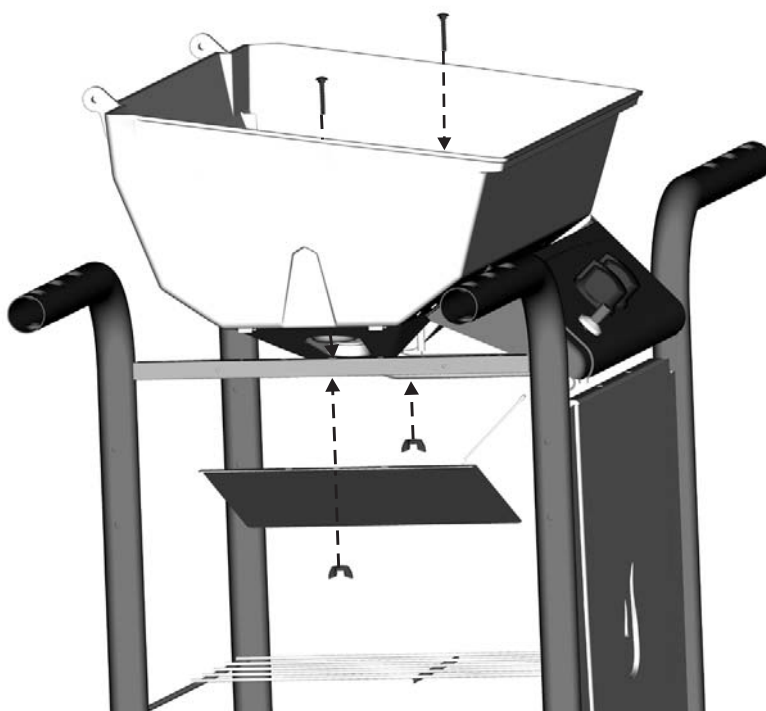
- 1 Grill Bottom
- 1 Heat Shield
- 2 Carriage Bolts
- 2 Wing Nuts



Qty.2



Qty. 2



7

Items to Assemble:

- 2 End Caps
- 1 Toolholder
- 1 Carriage Bolt
- 1 Wing Nut

Place Carriage Bolt in right hole on Toolholder. Secure with Wing Nut.

