

1

**NOTE:** To prevent scratching, lay grill on packing material to assemble.



This label contains the model and serial number for your grill. You should write this information on page 2 of the LP Gas Grill Use and Care in the "Warranty Information" box.

2

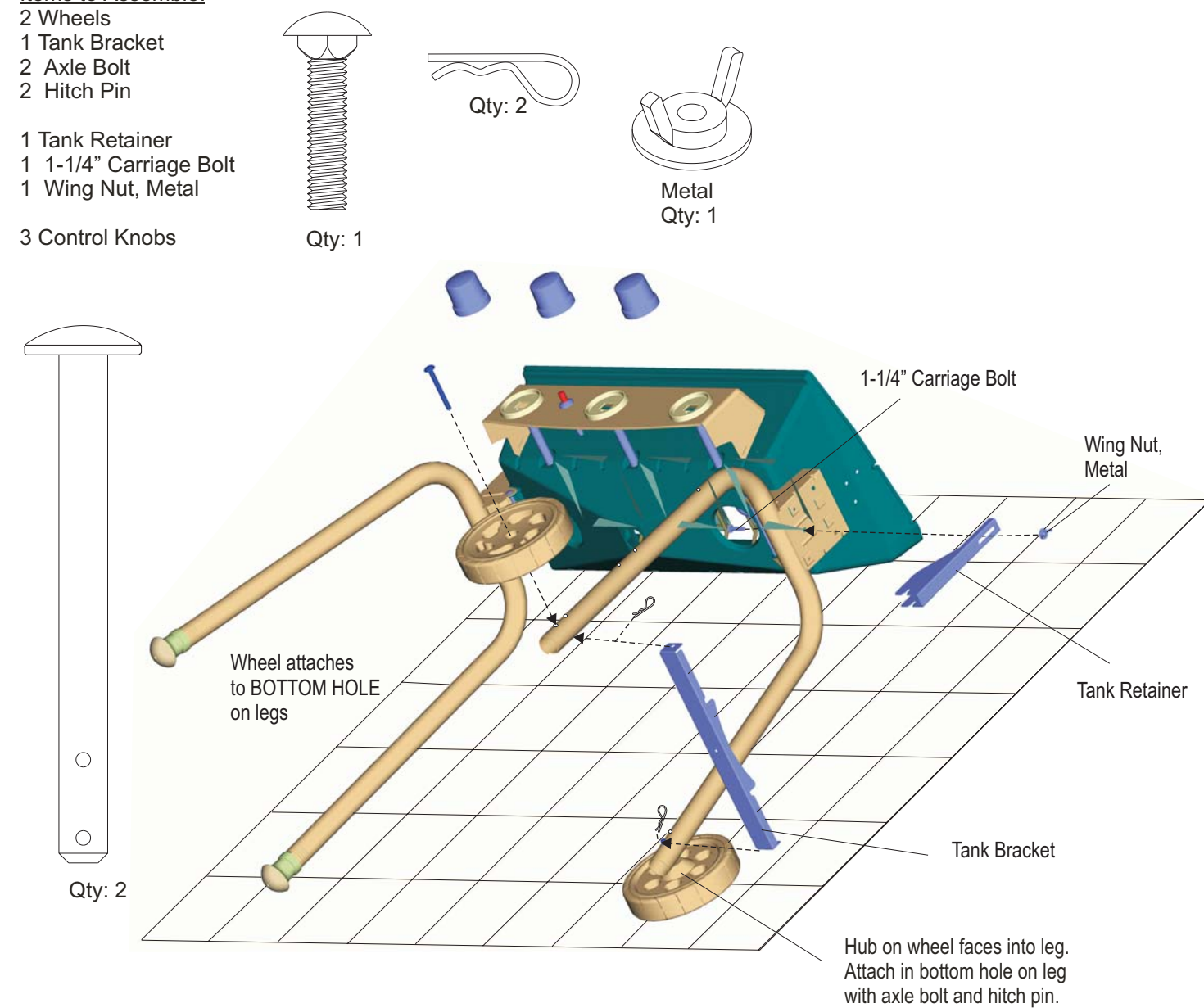
**1st:** Unfold legs. Do not stand cart up until front panel is attached. The front panel stabilizes the cart.

**Items to Assemble:**

- 2 Wheels
- 1 Tank Bracket
- 2 Axle Bolt
- 2 Hitch Pin

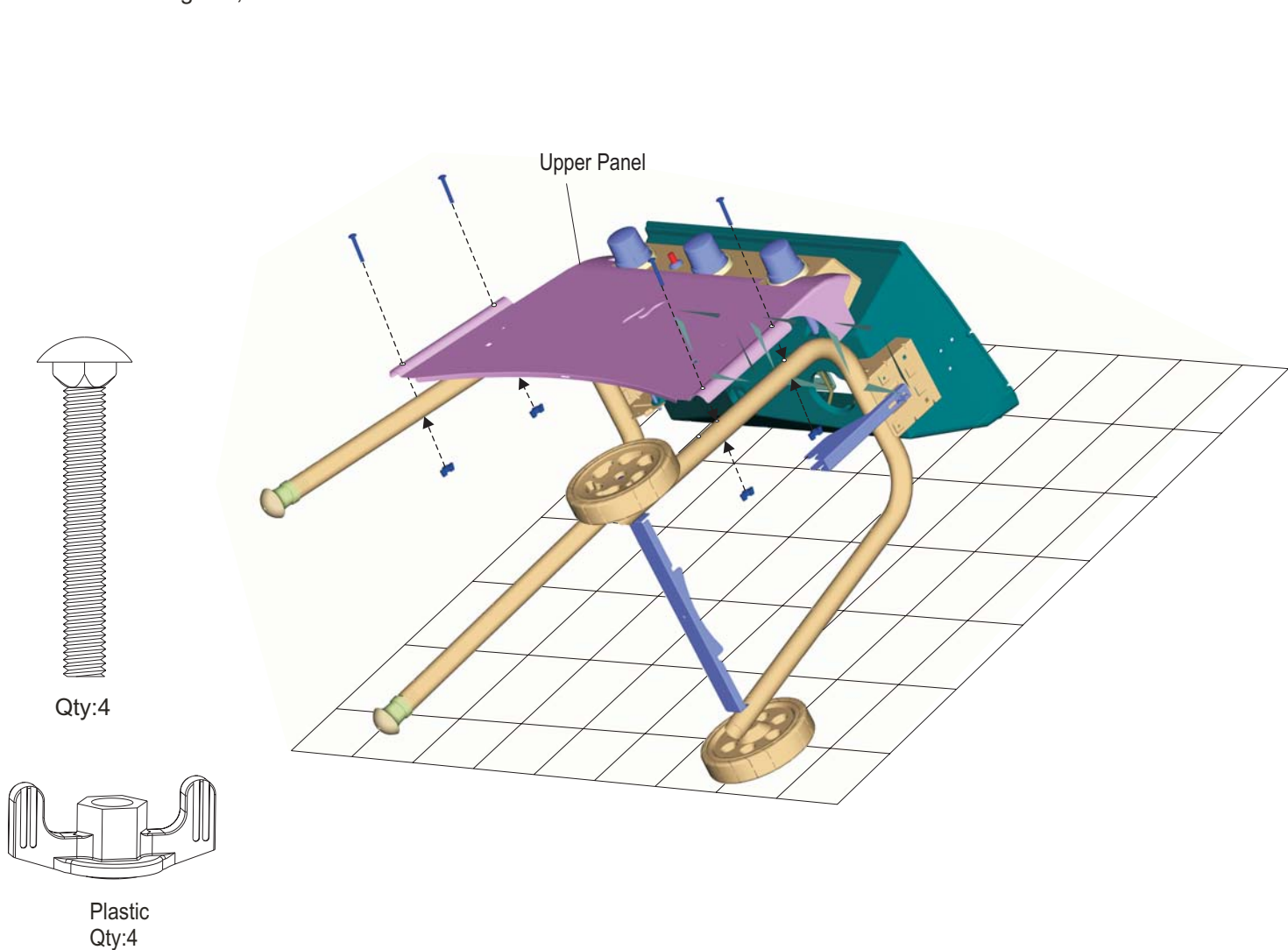
- 1 Tank Retainer
- 1 1-1/4" Carriage Bolt
- 1 Wing Nut, Metal

- 3 Control Knobs



3

- Items to Assemble:**
- 1 Upper Panel
  - 4 2" Carriage Bolt
  - 4 Wing Nut, Plastic

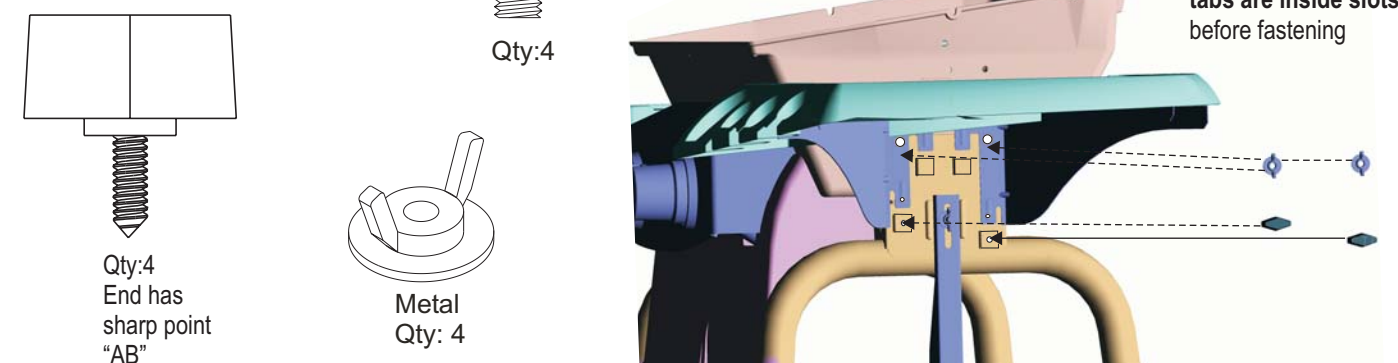


4

**Stand Cart Upright**

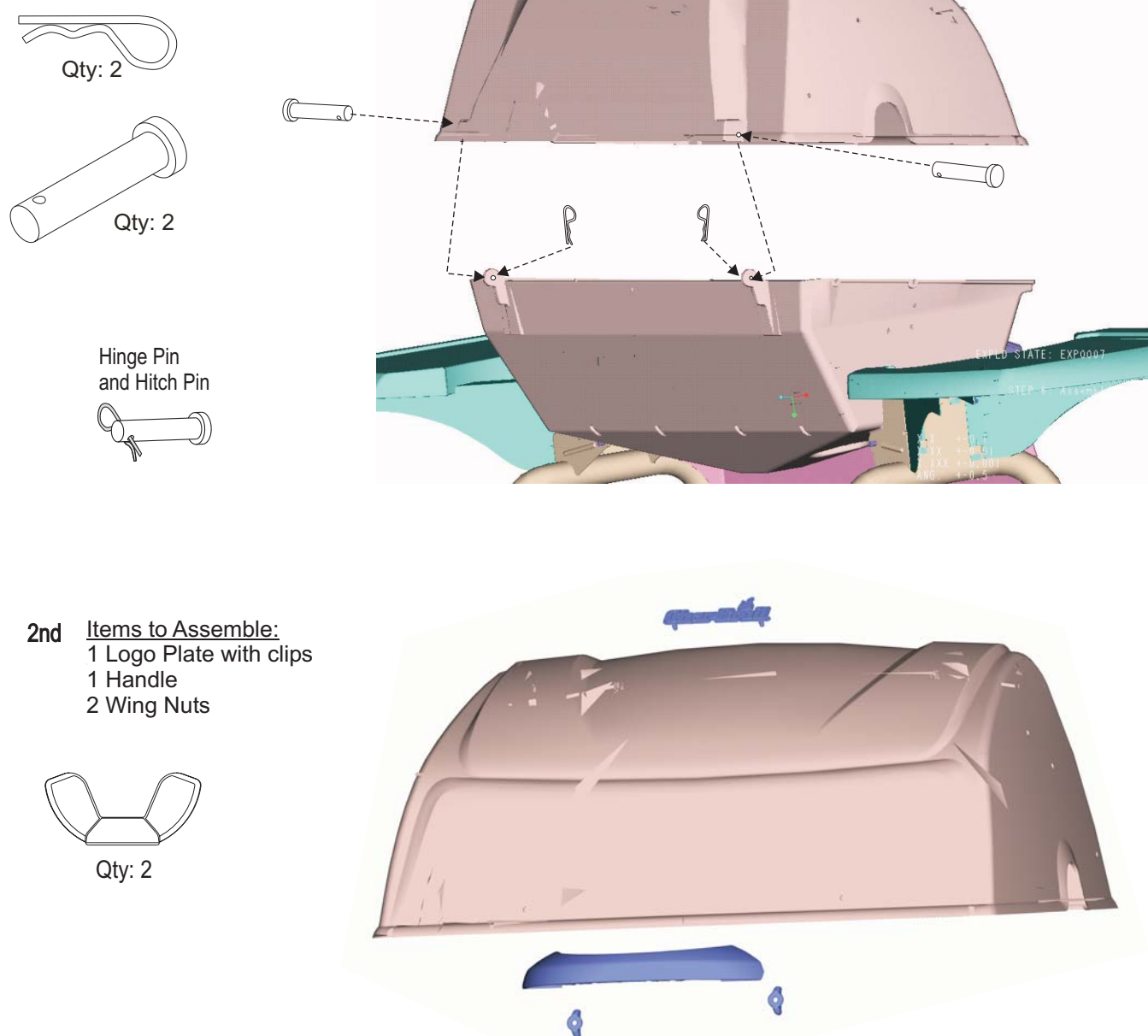
- Items to Assemble:**
- 1 Right Shelf
  - 2 3/4" Carriage Bolt
  - 2 Wing Nut, Metal
  - 2 Wing Screw, "AB" point

- Repeat for Left Side**
- 1 Left Shelf
  - 2 3/4" Carriage Bolt
  - 2 Wing Nut, Metal
  - 2 Wing Screw, "AB" point



5

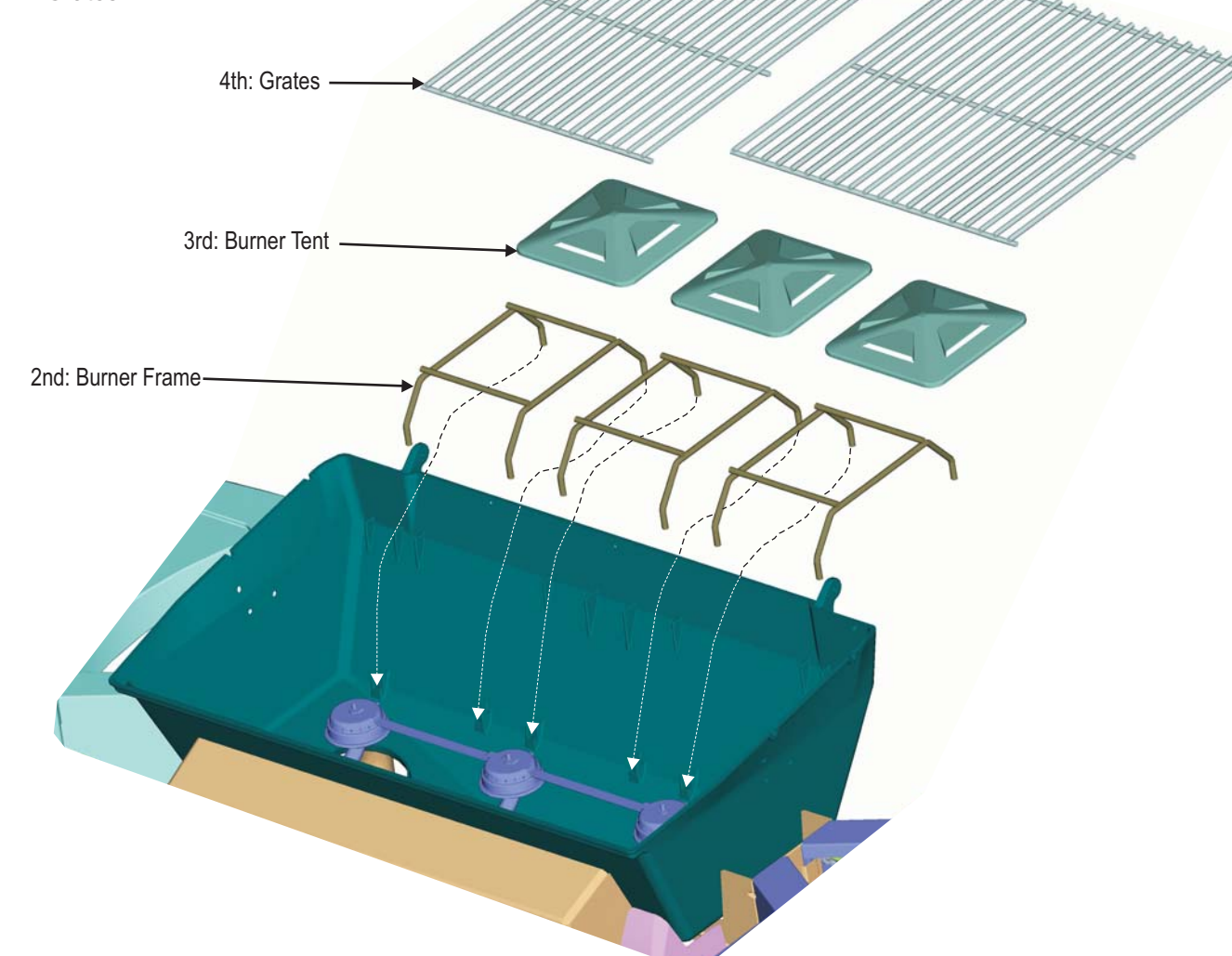
- Items to Assemble:**
- 1 Grill Lid
  - 2 Hinge Pin
  - 2 Hitch Pin



6

**1st: Remove styrofoam pad**

- Items to Assemble:**
- 3 Tent Frames
  - 3 Burner Tents
  - 2 Grates

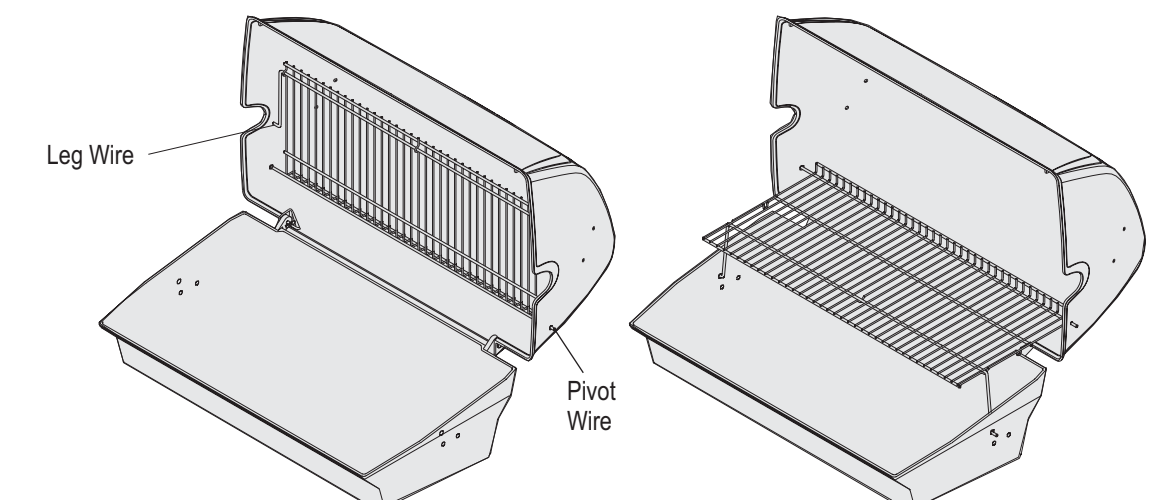


7

- Item to Assemble:**
- 1 SwingAway

SwingAway will keep food warm while keeping it away from flames. Do no use for cooking meats or heavy food items.

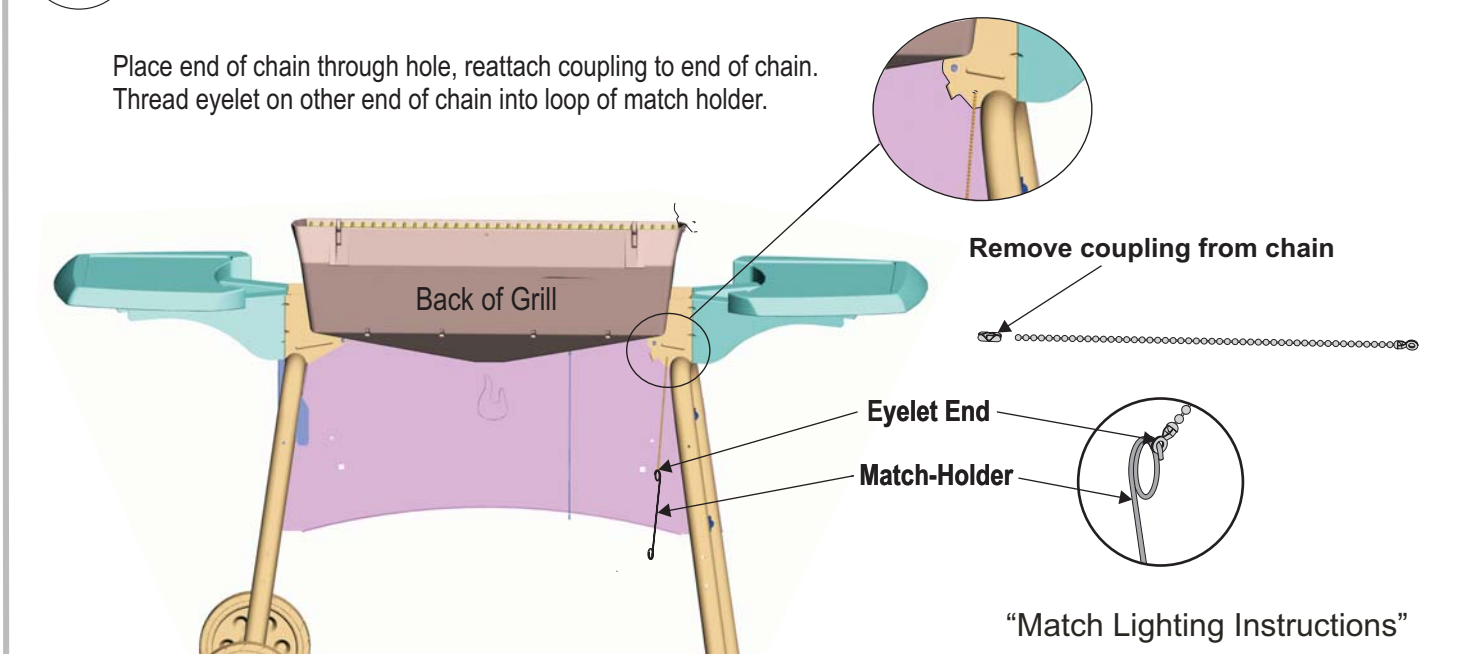
Pivot and leg wires must run underneath SwingAway surface



8

- Items to Assemble:**
- 1 Chain with Coupling
  - 1 Match-Holder

Place end of chain through hole, reattach coupling to end of chain. Thread eyelet on other end of chain into loop of match holder.



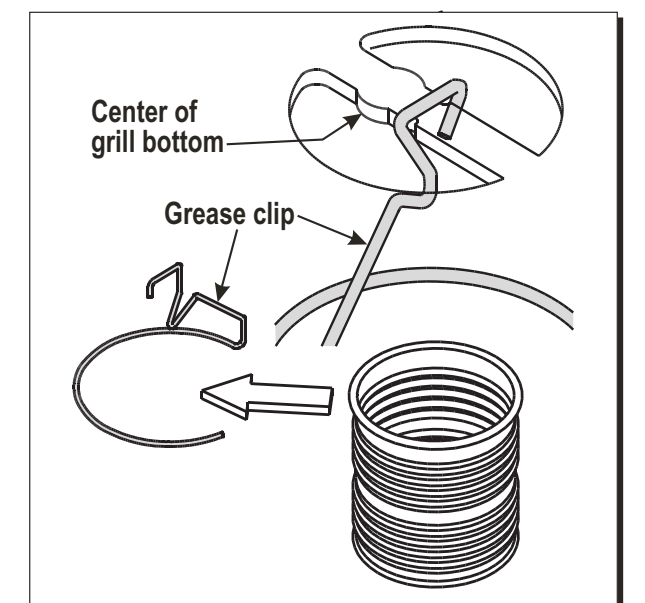
9

- Items to Assemble:**
- 1 Grease Clip

Hang grease clip from center of grill bottom. Use an empty soup can (not included) to hang from grease clip.

**CAUTION**

- Failure to install can in clip will cause hot grease to drip from bottom of grill with risk of fire or property damage.



10

- Items to Assemble:**
- 1 LP Tank

Loosen wing-nut on tank retainer. Center base of tank in notches between wheels. Lower tank retainer onto tank and tighten the wing-nut.

**LP tank is shipped empty.** Fill and leak check before attaching to grill and regulator.

See Use and Care to perform the "Burner Flame Check" and important safety instructions before using

**CAUTION**

- Tank collar opening must face to front of cart once tank is attached.
- Failure to install tank correctly may allow gas hose to be damaged in operation, resulting in the risk of fire.

