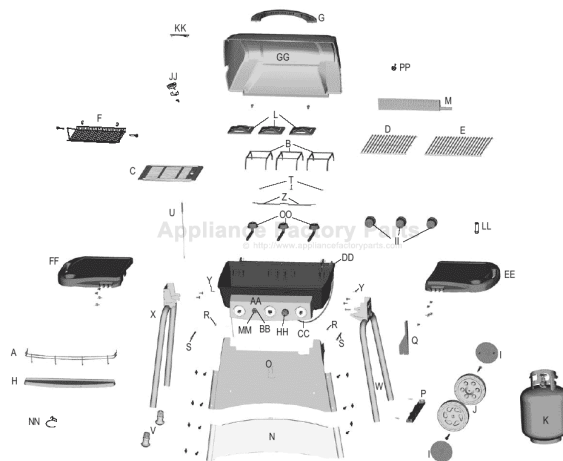


 **Appliance Factory Parts**
Experts in BBQ, Humidifier, & Appliance Parts
☎ 1-800-955-7075

Shop genuine replacement parts for Charbroil
463826803



Find Your Charbroil Grill Parts - Select From 3592 Models

----- Manual continues below -----

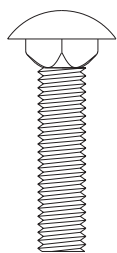
1 1st: Unfold legs. Do not stand cart up until front panel is attached. The front panel stabilizes the cart.

Items to Assemble:

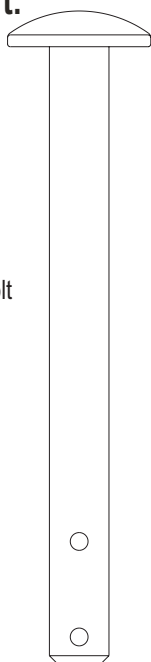
- 2 Wheels
- 1 Tank Support
- 2 Axle Bolts
- 2 Hitch Pins
- 2 Hub Caps

- 1 Tank Retainer
- 1 1-1/4" Carriage Bolt
- 1 Wing Nut, Metal

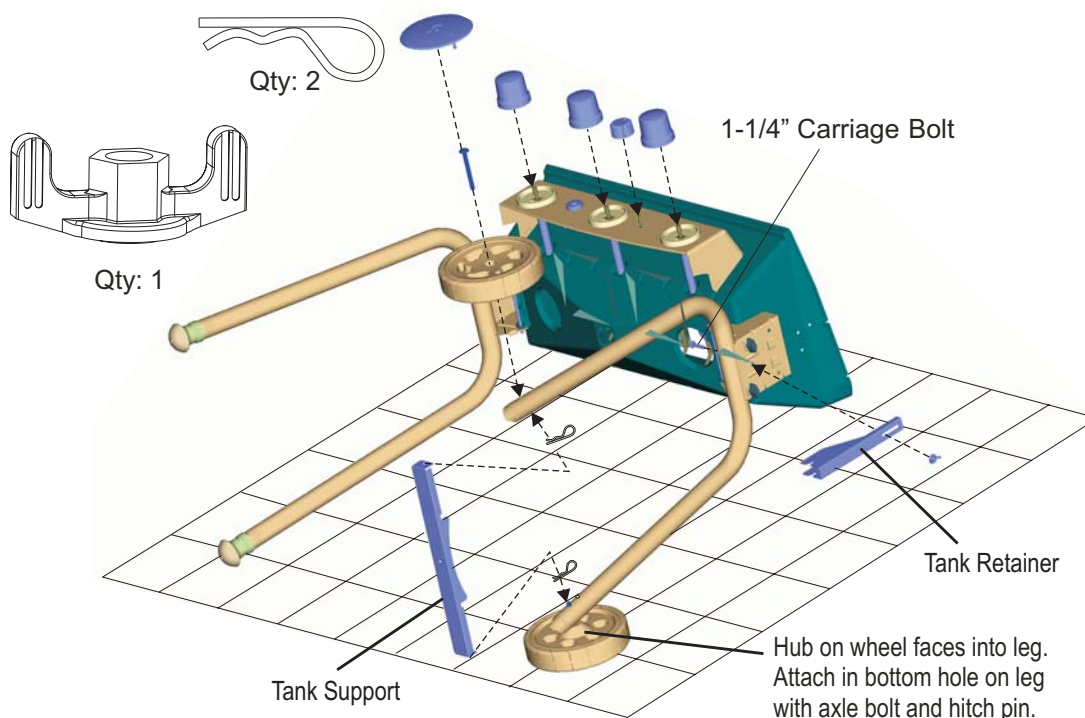
- 3 Control Knobs
- 1 Rotisserie Knob



Qty: 1



Qty: 2



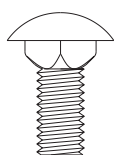
4

Items to Assemble:

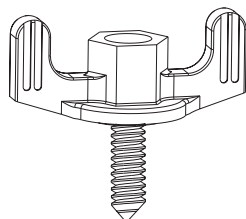
- 1 Left Shelf
- 2 3/4" Carriage Bolts
- 2 Wing Nuts
- 2 Wing Screws

Repeat for Right Side

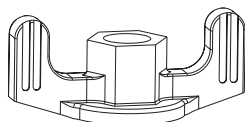
- 1 Right Shelf
- 2 3/4" Carriage Bolts
- 2 Wing Nuts
- 2 Wing Screws



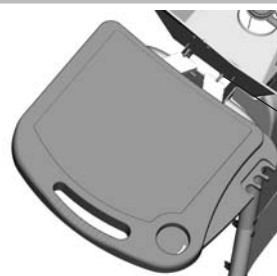
Qty: 2



Qty: 2

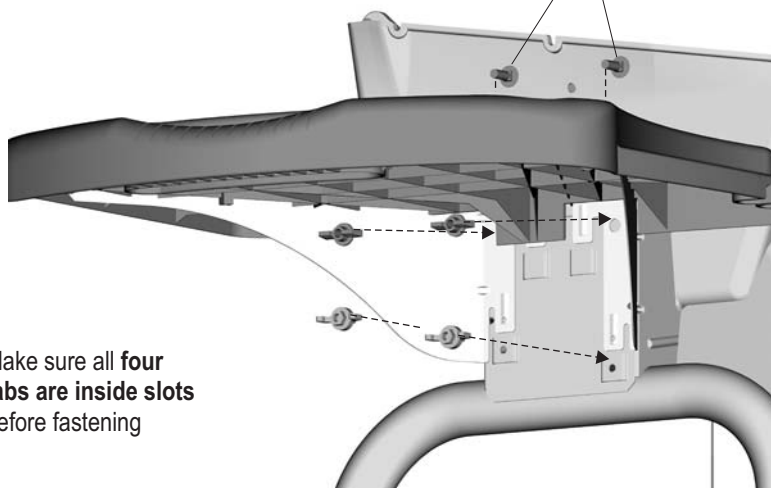


Qty: 2



View looking down

Insert 3/4" Carriage Bolts into bracket on Legs

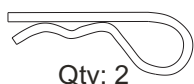


Make sure all **four tabs** are inside slots before fastening

7

Items to Assemble:

- 1 Grill Lid
- 2 Hinge Pin
- 2 Hitch Pin



Qty: 2

Hinge Pin and Hitch Pin

