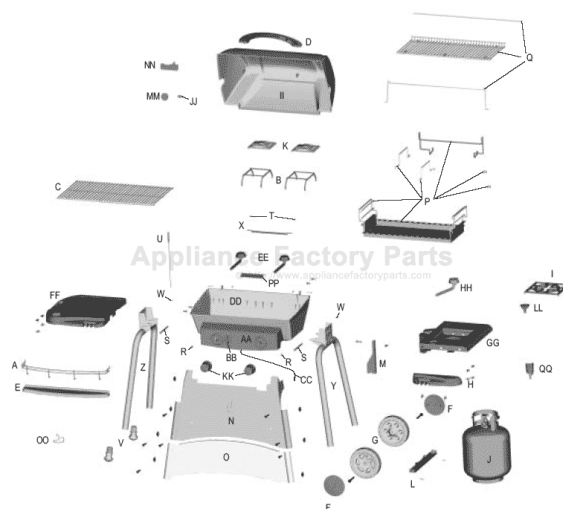


This Owner's Manual is provided and hosted by [Appliance Factory Parts](#).



Charbroil 463839303 Owner's Manual

**Shop genuine replacement parts for Charbroil
463839303**



Find Your Charbroil Grill Parts - Select From 3592 Models

----- Manual continues below -----

1 1st: Unfold legs. Do not stand cart up until front panel is attached. The front panel stabilizes the cart.

Items to Assemble:

2 Wheels

1 Tank Support

2 Axle Bolts

2 Hitch Pins

2 Hub Caps

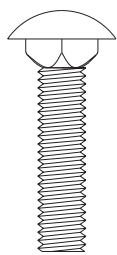
1 Tank Retainer

1 1-1/4" Carriage Bolt

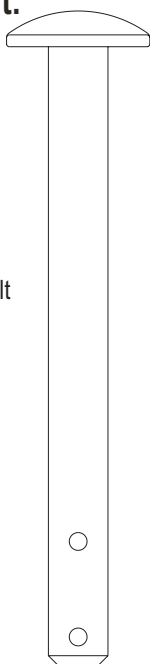
1 Wing Nut

2 Control Knobs

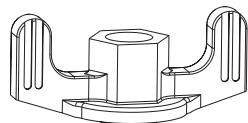
1 Rotary Ignitor



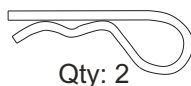
Qty: 1



Qty: 2



Qty: 1



Qty: 2

Wheel attaches in BOTTOM HOLE on legs

Rotary Knob may be attached

1-1/4" Carriage Bolt

Tank Retainer

Tank Support

Hub on wheel faces into leg
Attach in bottom hole on leg with axle bolt and hitch pin.

4

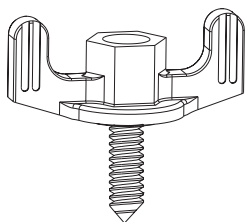
Items to Assemble:

1 Sideburner Toolholder

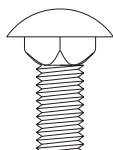
1 Sideburner

2 3/4" Carriage Bolts

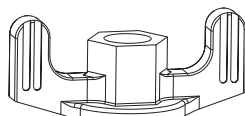
4 Wing Nuts



Qty: 4

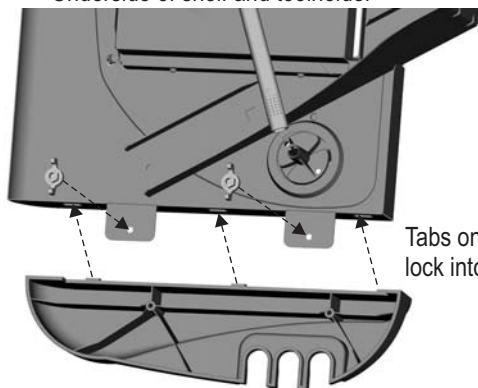


Qty: 2



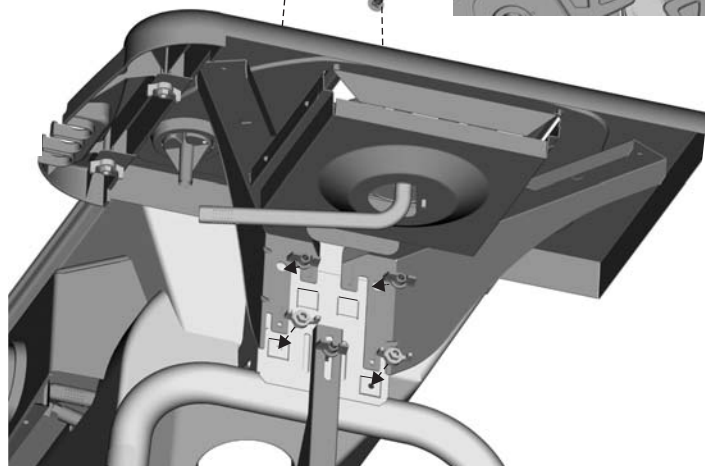
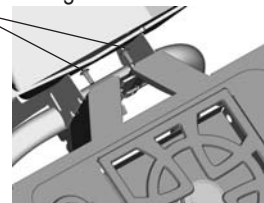
Qty: 2

Underside of shelf and toolholder



Tabs on toolholder lock into sideburner shelf

View looking down on 3/4" Carriage Bolts



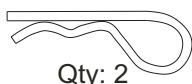
7

Items to Assemble:

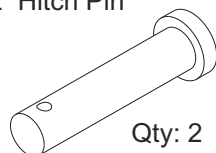
1 Grill Lid

2 Hinge Pin

2 Hitch Pin



Qty: 2



Qty: 2

Hinge Pin and Hitch Pin

