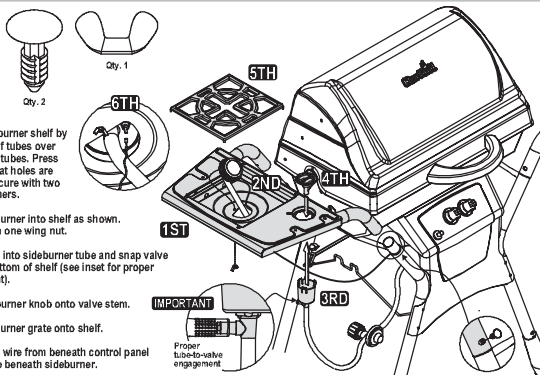
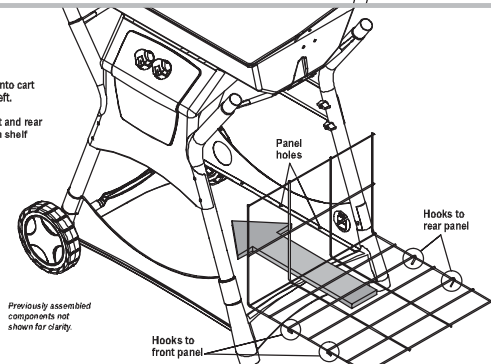


10



13

- Place bottom shelf into cart with tail end to the left.
- Insert hooks at front and rear of shelf into holes in shelf panels.

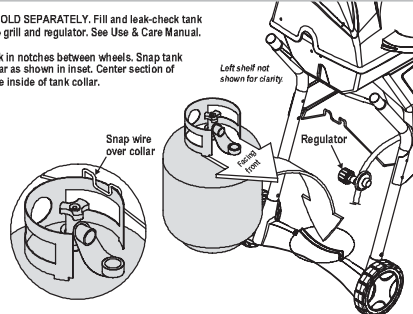


11

- LP GAS TANK IS SOLD SEPARATELY. Fill and leak-check tank before attaching to grill and regulator. See Use & Care Manual.
- Center base of tank in notches between wheels. Snap tank wire over tank collar as shown in inset. Center section of tank wire should be inside of tank collar.

CAUTION

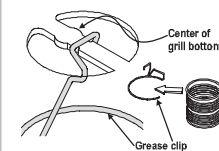
- Tank collar opening must face to front of cart once tank is attached.
- Failure to install tank correctly may allow gas hose to be damaged in operation, resulting in the risk of fire.



See Use & Care Manual to perform "Burner Flame Check" and for important safety instructions before using.

12

- Snap bottom shelf panels onto front and rear legs, just above wheel assembly and leg extender assembly.
- Hang grease clip from center of grill bottom. Use an empty soup can (not included) to hang from grease clip.

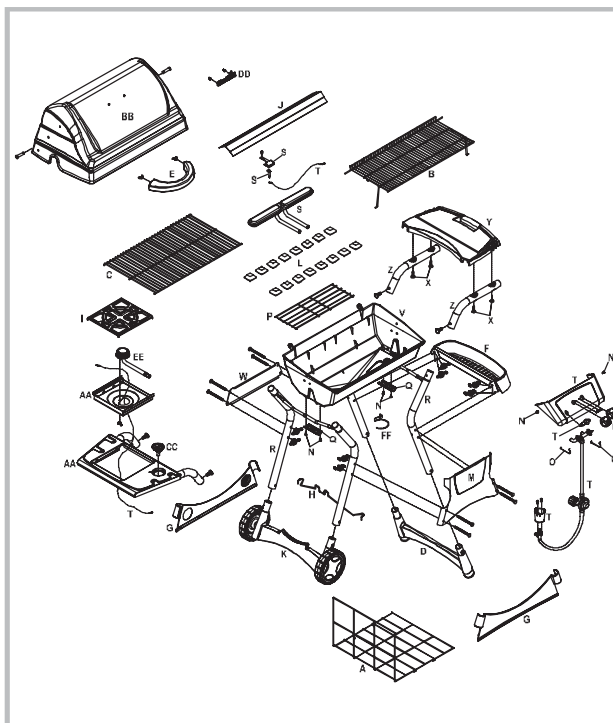
**CAUTION**

- Failure to install can in clip will cause hot grease to drip from bottom of grill with risk of fire or property damage.

Previously assembled components not shown for clarity.

Parts List - Model 4667274

Key	Qty.	Description	Part #	Key	Qty.	Description	Part #
A	1	Bottom Shelf	4151007	W	1	Back Panel	4500251
B	1	Warming Rack	4152124	X	4	#10x1-1/4" Self-Tap Screw	4080041
C	1	Cooking Grate	4152739	Y	1	Side Shelf	4154453
D	1	Leg Extender Assembly	4154466	Z	2	Shelf Arm	4502121
E	1	Handle	4154488	AA	1	Sideburner Shelf Assembly	4520029
F	1	Condiment Basket	4154498	BB	1	Grill Lid	4581019
G	1	Bottom Shelf Panel Set	4154499	CC	1	Sideburner Knob	4154471
H	1	Tank Wire	4156152	DD	1	Logo Plate Assembly	4157147
I	1	Sideburner Grate	4156179	EE	1	Sideburner	5068017
J	1	Drip VapoRISER Bar	4156417	FF	1	Grease Clip	5156607
K	1	Wheel Assembly	4158098		1	Hardware Bag	4253990
L	---	Briquets (1 bag)	4158125			Replacement Ignition Module Bag	4506710
M	1	Front Panel	4502118				
N	6	#10x1/2", T-20, Self-Tap Screw	4080043				
O	2	Valve Clip	4156172				
P	1	Briquet Grate	4157101				
Q	2	Casting Seat Bracket	4500222				
R	2	Leg Assembly	4502119				
S	1	Burner/Collector Assembly	4505065				
T	1	Control Panel Assembly	4530080				
U	2	Control Knob	4154470				
V	1	Grill Bottom	4580148				



QUICKSET®

4667274
ASSEMBLY MANUAL



THIS GRILL IS FOR OUTDOOR USE ONLY

CAUTION: Read and follow all safety statements, assembly instructions, and use and care directions before attempting to assemble and cook.

INSTALLER/ASSEMBLER: Leave these instructions with consumer.

CONSUMER: Keep this manual for future reference.

WARNING

Failure to follow all manufacturer's instructions could result in serious personal injury and/or property damage.

CAUTION

Some parts may contain sharp edges – especially as noted in the manual! Wear protective gloves if necessary.

If you have any questions or need assistance during assembly, please call 1-800-387-6057.

Visit us on the web at:
www.charbroil.com

Char-Broil