

# Broil King®

## REDDI-BILT BARBECUES

### ASSEMBLY MANUAL & PARTS LIST

### MANUEL DE MONTAGE & LISTE DE PIÈCES

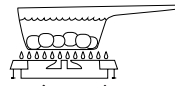
#### Broil King®

REGAL XL 20  
960-24  
960-27



#### Broil King®

REGAL XL 40  
960-44  
960-47



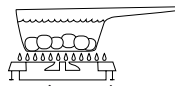
#### Broil King®

REGAL XL 70  
960-74  
960-77



#### Broil King®

REGAL XL 90  
960-94  
960-97



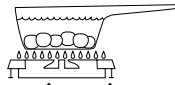
#### Broil King®

IMPERIAL 20  
969-24  
969-27



#### Broil King®

IMPERIAL 40  
969-44  
969-47



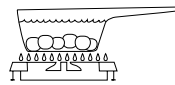
#### Broil King®

IMPERIAL 70  
969-74  
969-77



#### Broil King®

IMPERIAL 90  
969-94  
969-97



RETAIN FOR FUTURE REFERENCE

VEUILLEZ CONSERVER POUR REFERENCE ULTERIEURE

1-800-265-2150

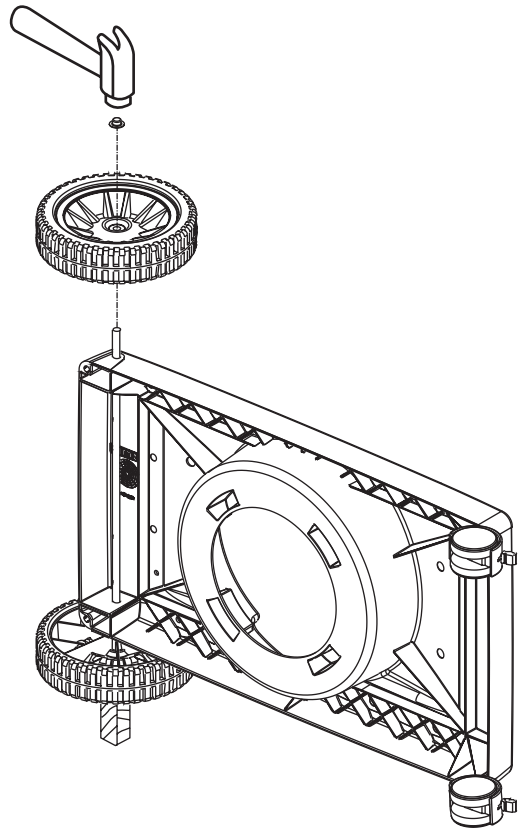
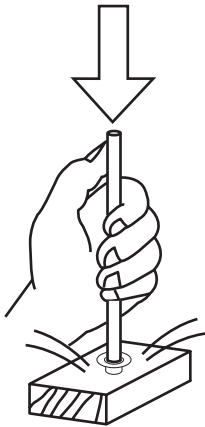
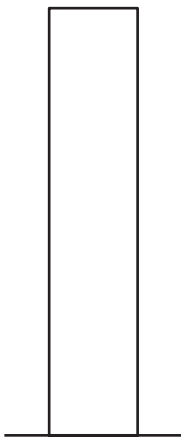
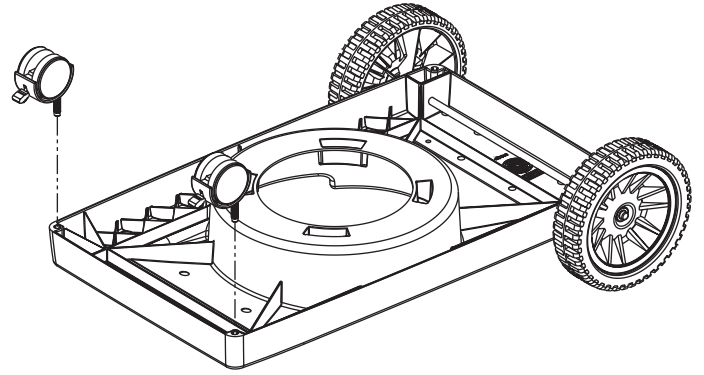
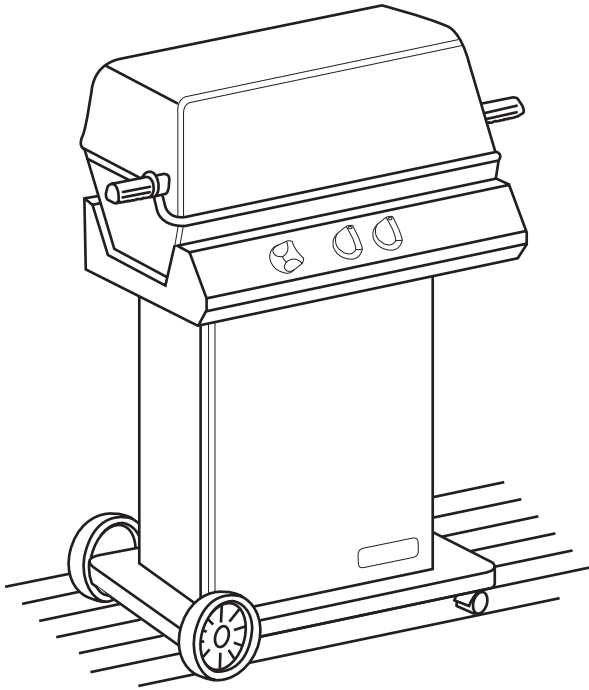
*Onward*  
MANUFACTURING COMPANY  
SINCE 1906  
585 KUMPF DRIVE LIMITED  
WATERLOO, ONTARIO, CANADA  
N2V 1K3

info@omcbbq.com

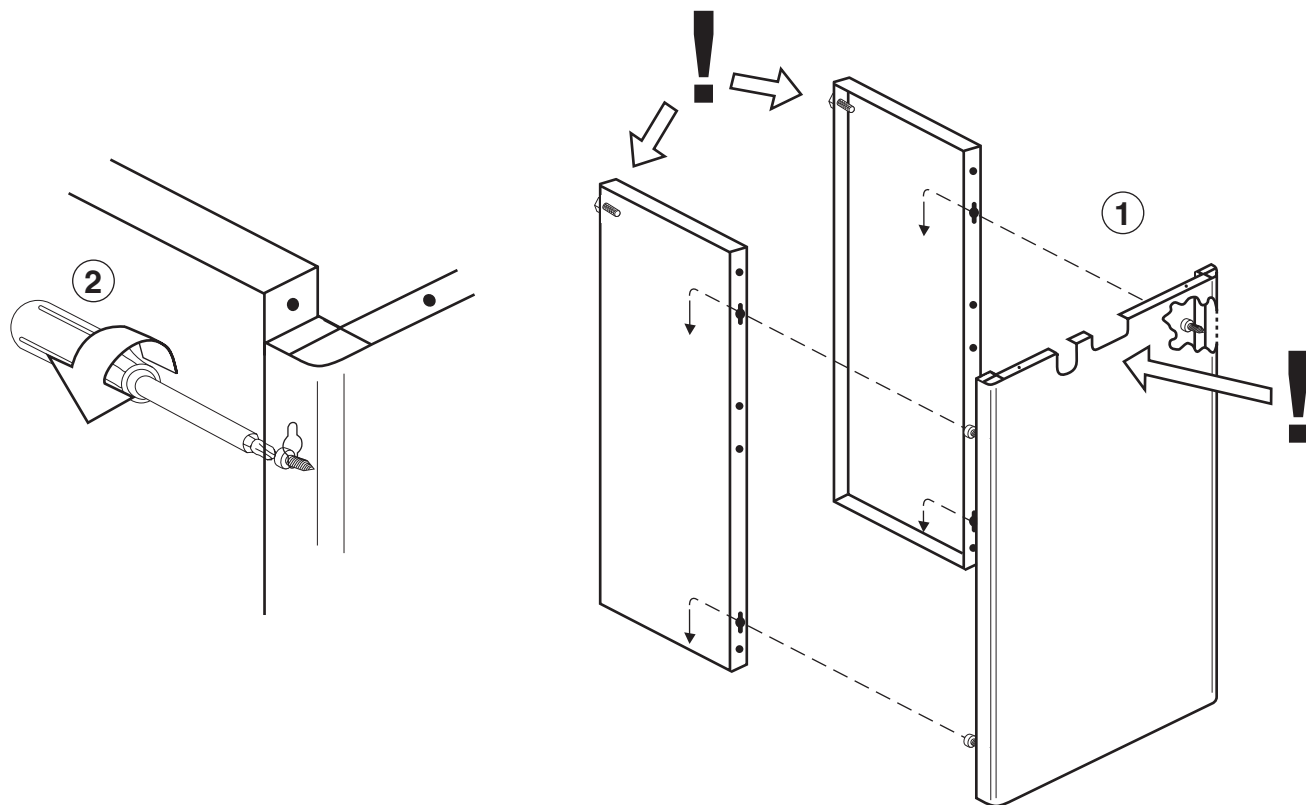
10084-K64 Rev. K 01/05

1

(2)

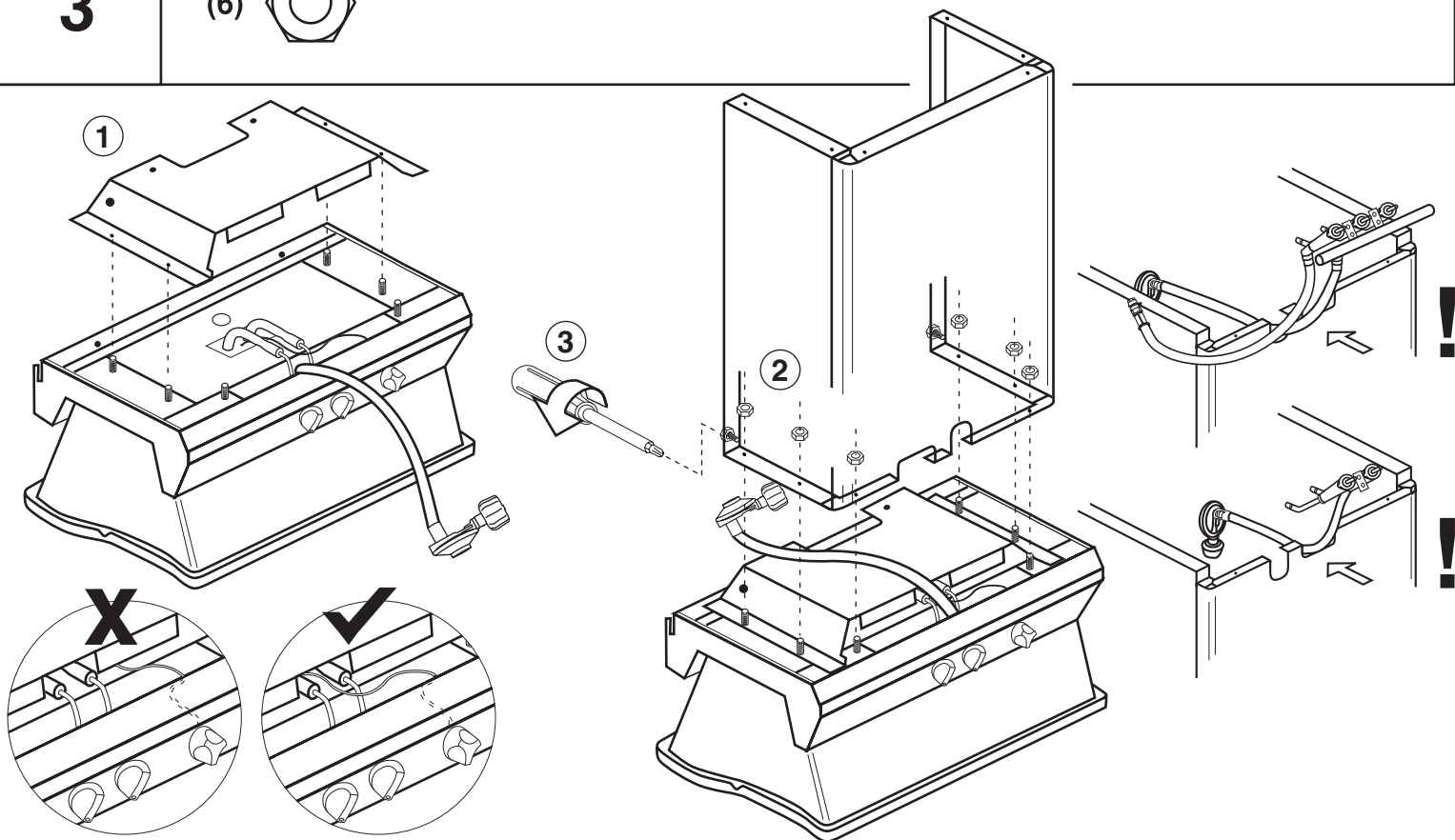


2

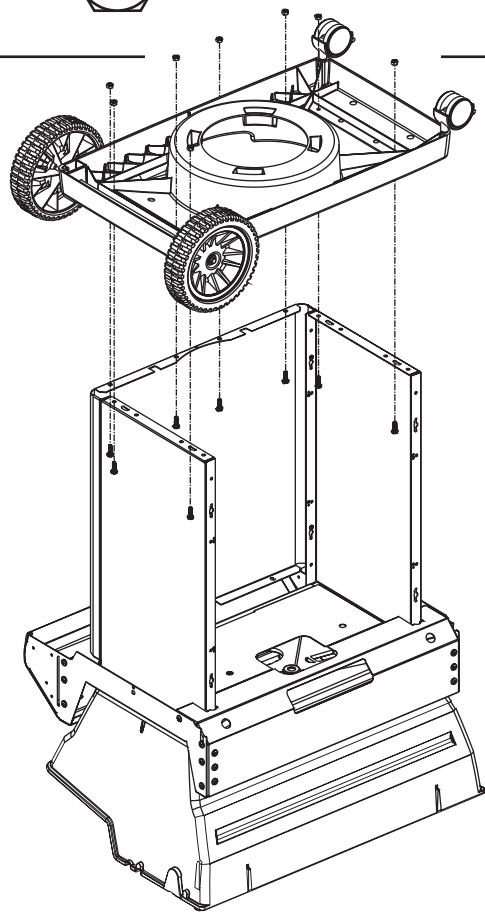
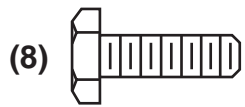


3

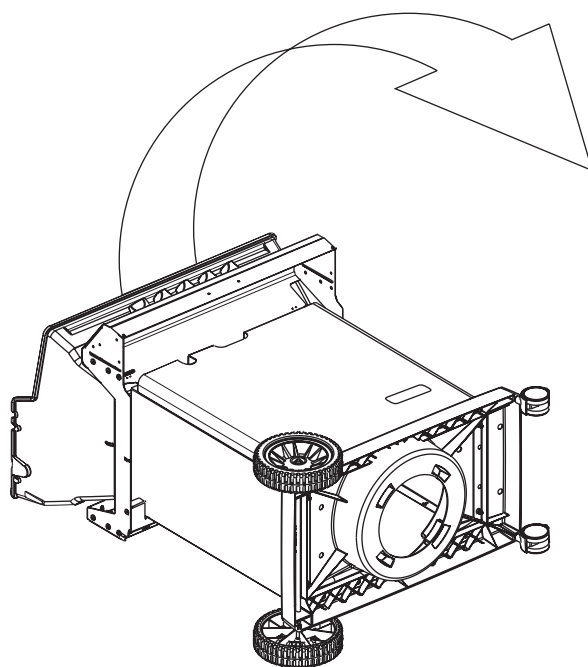
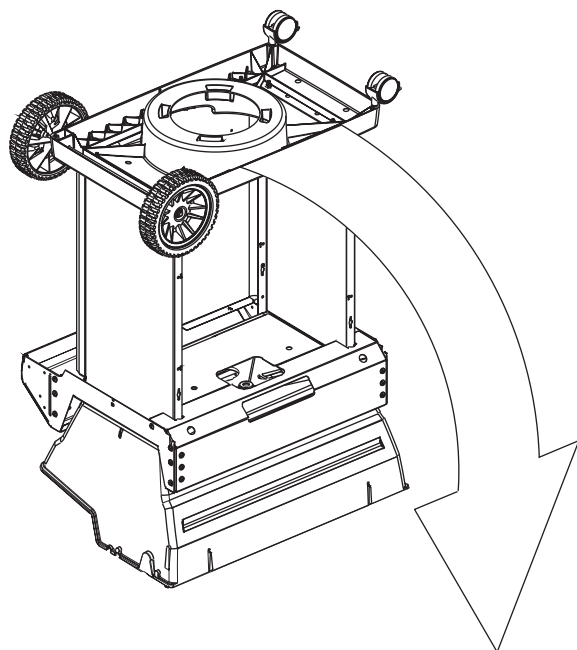
(6)



4

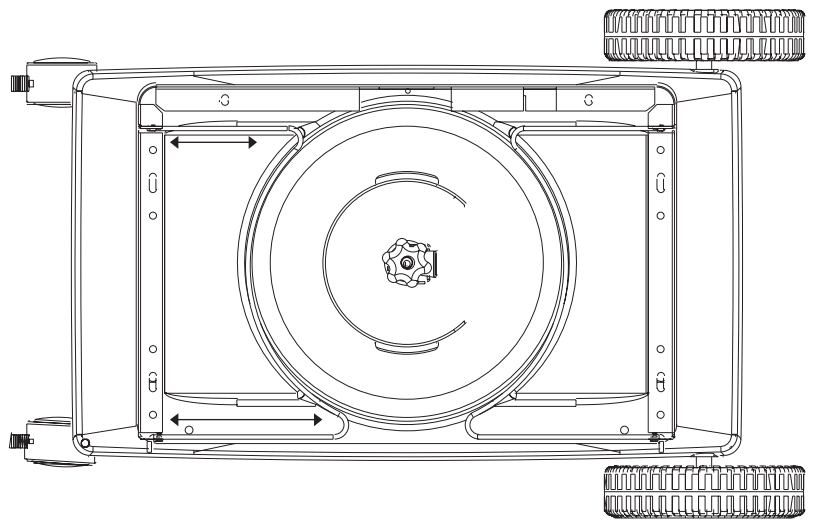
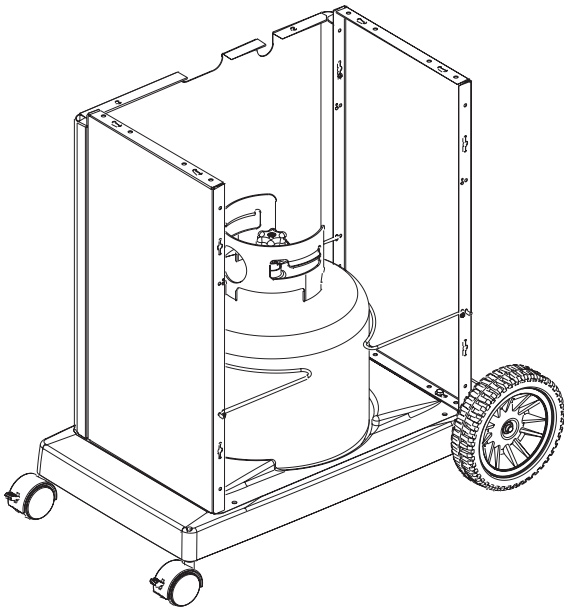
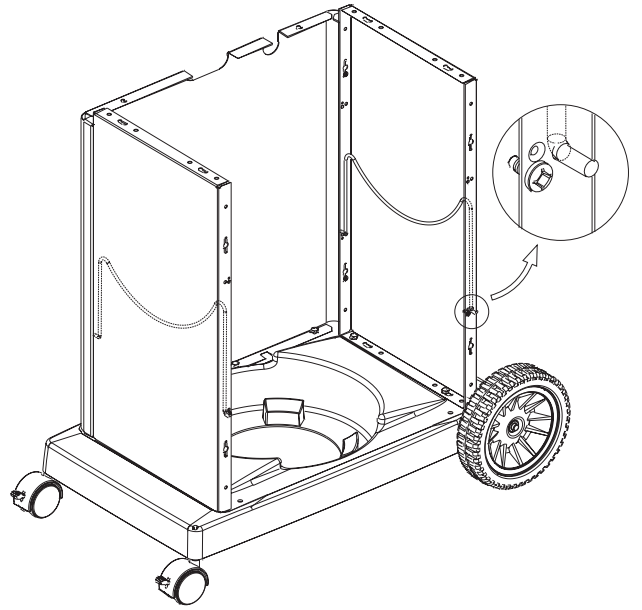
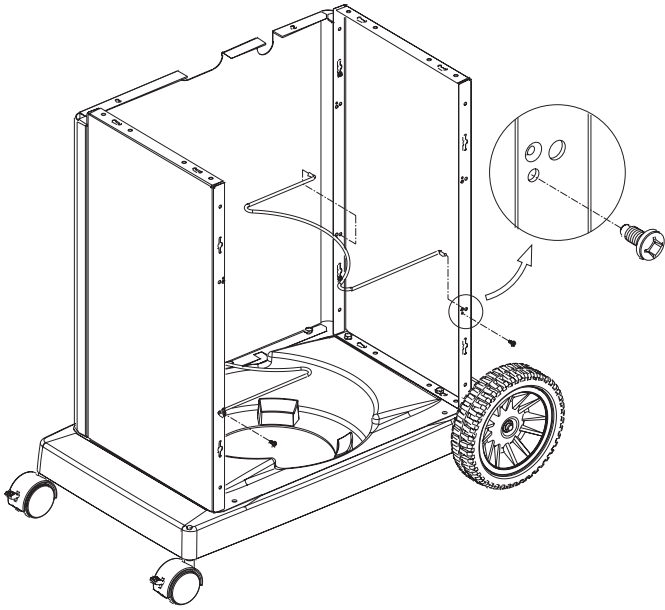


5



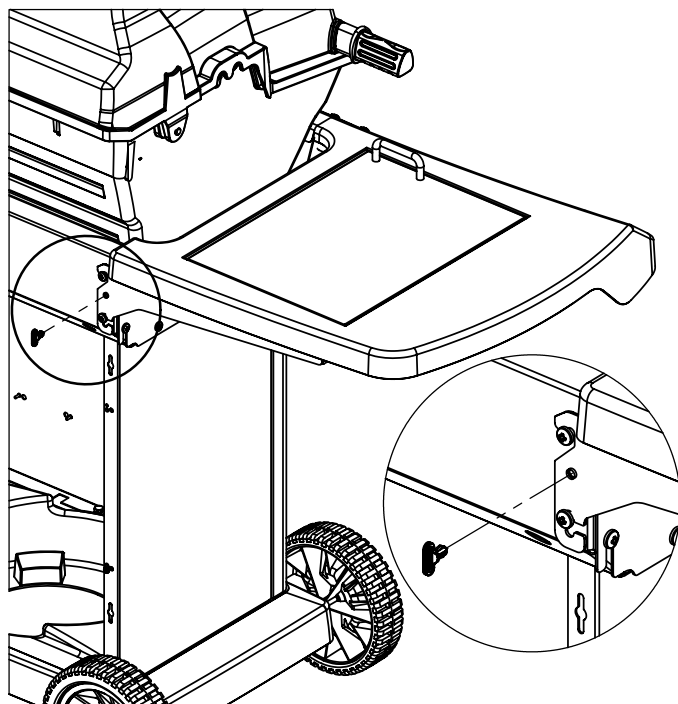
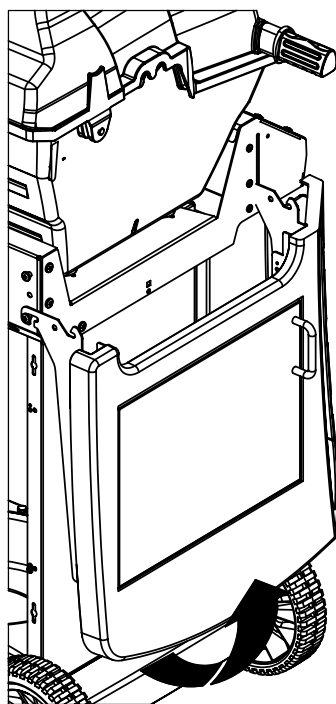
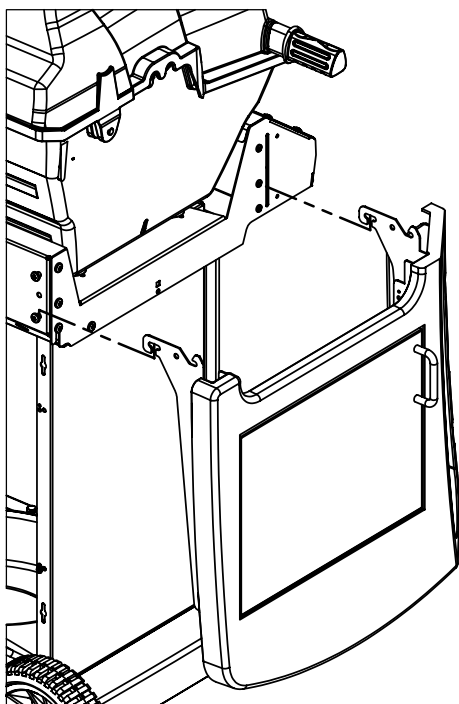
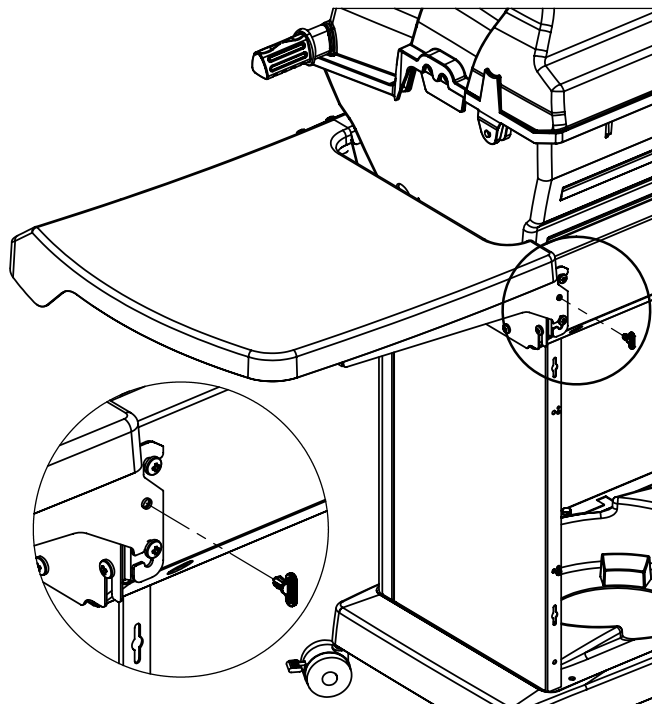
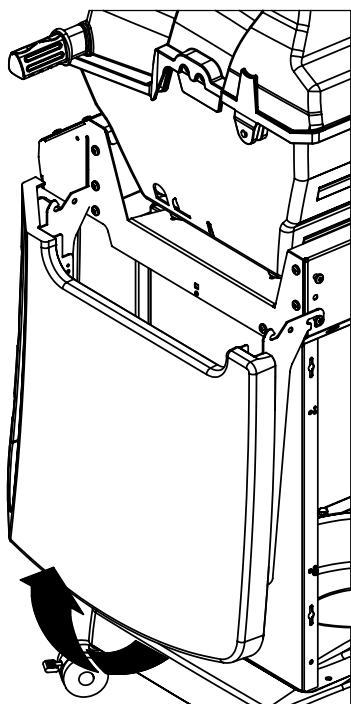
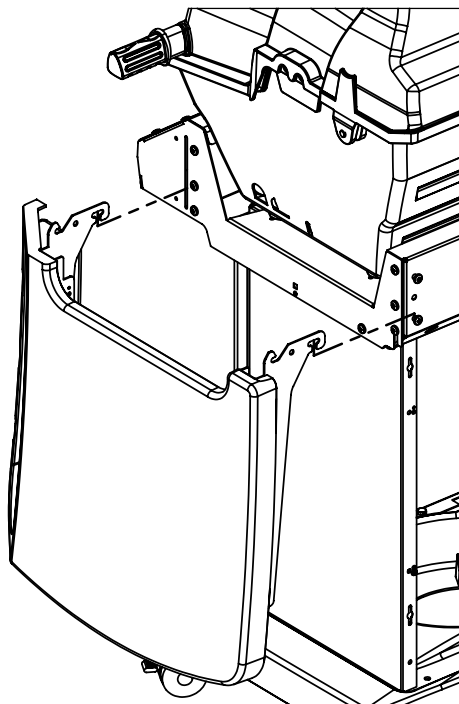
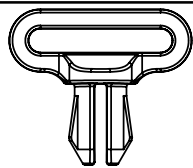
6

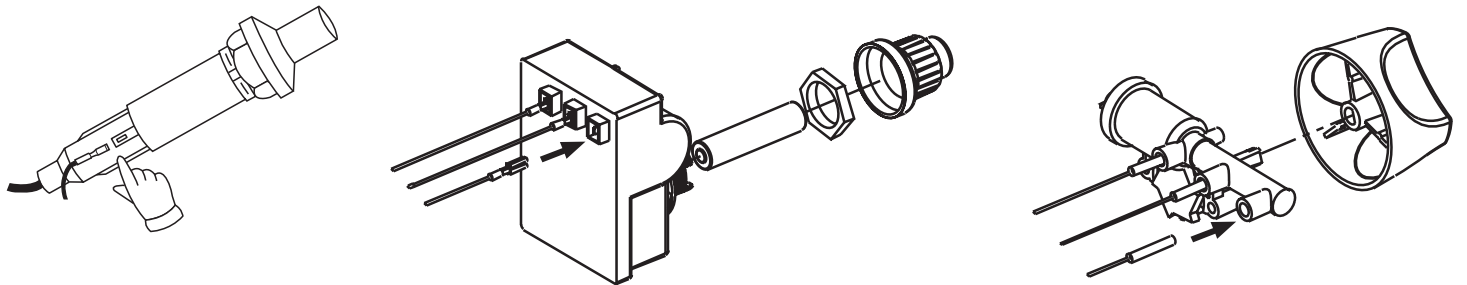
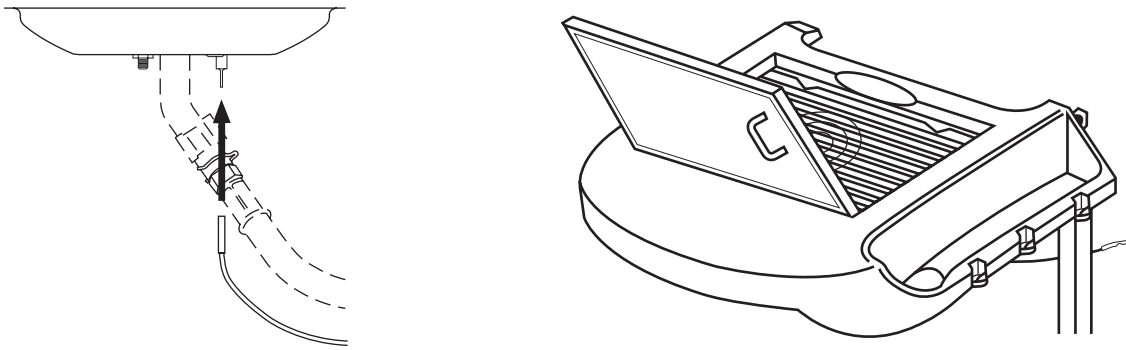
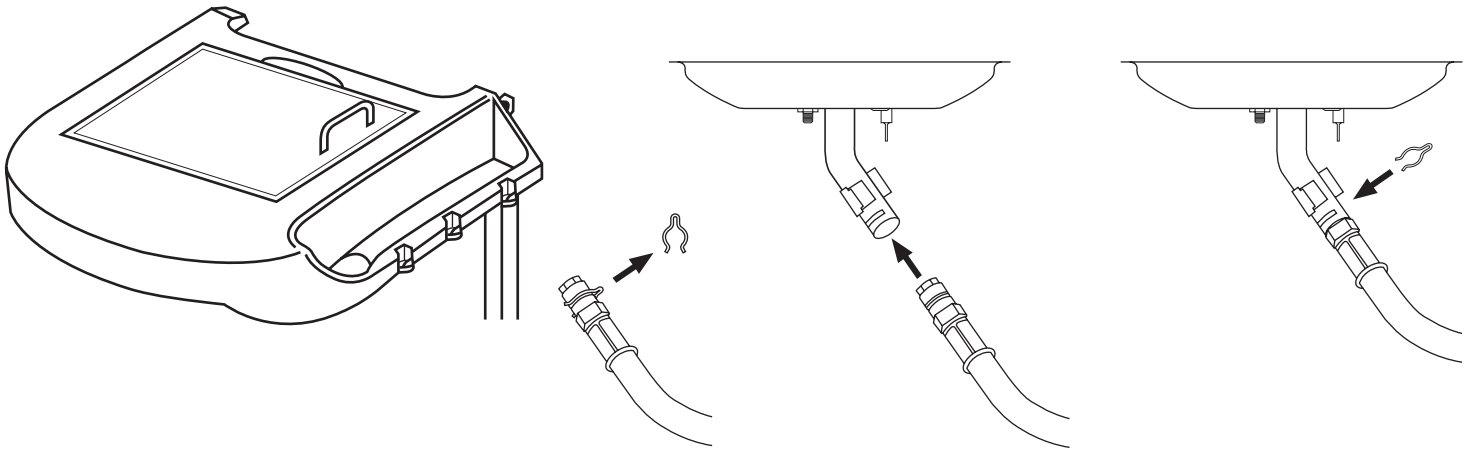
(2) 



7

(2)







8

